

British Commonwealth

Great Britain



- 1 ○ **Great Britain, 1840, Queen Victoria First Issue, 2d blue (Scott 2)**, lettered B-I, 4 margins, red Maltese Cross cancel, Fine to Very Fine. Scott \$975. SG 5; £975 (\$1,250).
Estimate \$250 - 350



- 2 ★ **Great Britain, 1883, Queen Victoria, 2s6d lilac on white paper, Anchor watermark (Scott 96)**, nicely centered, with margins well clear of the design on all sides, and quite fresh, o.g., hinged, almost Very Fine. Scott \$875. SG 178; £600 (\$770).
Estimate \$150 - 200



- 3 ★★ **Great Britain, 1958-61, Queen Elizabeth II Graphite-Lined Issue, ½d to 4½d complete (Scott 353c-360a, 356cp-360ap)**, set of 8, plus 1959, Queen Elizabeth II (phosphor-graphite), 2d light red brown - 4½d chestnut, set of 5, o.g., never hinged, Very Fine. Scott \$243. SG 587/594, 605/609; £200 (\$260).
Estimate \$75 - 100

Australia through Southern Rhodesia



- 4 ★ **Australia, 1913, Kangaroo and Map, 1/2d to 2s (Scott 1, 3-11)**, 1st watermark, missing only the 1d carmine and of course the high values but a great start to the complete set, o.g., hinged, Fine to Very Fine. Scott \$1,322. SG 1, 3-12; £1,026 (\$1,320). Estimate \$250 - 350



- 5 ★★ **Australia, 1924, Kangaroo and Map, 2s maroon (Scott 53)**, 3rd watermark, o.g., never hinged (light diagonal gum bend), Very Fine. Scott \$160 for n.h. SG 74; £85 for hinged (\$110). Estimate \$40 - 60



- 6 ★★ **Australia, 1934, Macarthur complete (Scott 147-149, 147a)**, set of 4 including the 2d Die II, o.g., never hinged, Very Fine. Scott \$134 for n.h. SG 150/152, 150a; £81 for hinged (\$100). Estimate \$40 - 60



- 7 ★★ **Australia, 1935, 1s Gallipoli, plus King George V Silver Jubilee complete (Scott 151, 152-154)**, o.g., never hinged, Very Fine. Scott \$184 for nh. SG 155, 156/158; £87 for hinged (\$110). Estimate \$60 - 80



- 8 ★★ **Australia, 1935-36, 3 different complete sets: KGV Silver Jubilee, Telephone Link and South Australia Centenary (Scott 152-154, 157-158, 163-165), o.g., never hinged, Fine to Very Fine. Scott \$144. SG 156/8, 159/60. Estimate \$50 - 75**



Ex 9

- 9 ★★ **Australia, 1963-65, Birds & Navigators, 5d to £2 complete (Scott 365-379), set of 15, o.g., never hinged, Very Fine. Scott \$245. SG 354/360, 363/369; £151 (\$190). Estimate \$75 - 100**



- 10 ★ **Bahrain, 1933, King George V definitives, 3p to 5r complete (Scott 1-14), set of 14, the high value with watermark upright, o.g., lightly hinged, mostly Very Fine. Scott \$493. SG 1/14; £300 (\$380). Estimate \$150 - 200**



- 11 ★ **Brunei, 1895, Star and Local Scene, 1/2c to \$1 complete (Scott A1-A10), set of 10, o.g., lightly hinged, Fine to Very Fine. Scott \$203. SG 1/10; £180 (\$230). Estimate \$75 - 100**



- 12 ★ **Brunei, 1907-21, Scene on Brunei River, 1c to \$1 (Scott 13-37), set of 26 including shades (missing the \$5 and \$25 high values), o.g., hinged (a few with slightly brownish gum as is common), Fine to Very Fine. Scott \$452. SG 23/46; £350 (\$450). Estimate \$120 - 180**



- 13 ★ **Brunei, 1924-37, River View and Native Houses, 1c to \$1 complete (Scott 43-61), set of 19, o.g., lightly hinged (3 low values with brownish gum). Scott \$278. SG 60/78; £250 (\$320). Estimate \$80 - 120**



- 14 ★★a **Canada, 1898, Queen Victoria “Numeral”, ½¢ black (Scott 74)**, plate block of 8, o.g., never hinged, Fine to Very Fine.

Estimate \$300 - 400

Catalogs \$336 as 8 singles. Plate blocks of this issue are very rare and without prices in either Scott or Unitrade.



- 15 (★) **Canada, 1898, Imperial Penny Postage, 2¢ black, blue & carmine, imperf. pair, showing massive shift of red (Scott 86a)**, without gum as issued, Very Fine to Extremely Fine. Scott \$500.

Estimate \$200 - 300



- 16 Oa **Canada, 1903, King Edward VII, 2¢ carmine, type II, imperf. block of 4 (Scott 90A)**, Very Fine to Extremely Fine, *very scarce postally used*. Scott \$160+.

Estimate \$75 - 100



- 17 ★★ **Canada, 1922, King George V “Admiral”, 5¢ violet, wet printing (Scott 112)**, o.g., never hinged (small gum disturbances), Very Fine; with 2025 P.S.E. certificate graded **VF 80**. Scott \$110. SMQ \$100.

Estimate \$40 - 60



- 18 ★★ **Canada, 1929, King George V “Scroll”, 1¢ orange and 2¢ green, horizontal coils, perf. 8 vertically (Scott 160-161)**, o.g., never hinged, Extremely Fine. Scott \$160.

Estimate \$60 - 80



- 19 ★★ **Canada, 1930, 50¢ Grand Pré (Scott 176)**, o.g., never hinged, Fine. Scott \$420.

Estimate \$75 - 100



- 20 ★★ **Canada, 1930, \$1 Mt. Cavell (Scott 177)**, o.g., never hinged, Fine to Very Fine. Scott \$420. Estimate \$100 - 150



- 21 ★ **Canada, 1930, \$1 Mt. Cavell (Scott 177)**, o.g., lightly hinged, Very Fine. Scott \$210. Estimate \$60 - 80



Ex 22

- 22 ★ **Canada, 1935, King George V Pictorials, 1¢ to \$1 complete (Scott 217-227)**, set of 11, o.g., lightly hinged, Very Fine. Scott \$122. Estimate \$50 - 75



Ex 23

- 23 ★ **Canada, 1942-43, King George VI "War" definitives, 1¢ to \$1 complete (Scott 249-262)**, set of 14, o.g., lightly hinged, Very Fine. Scott \$120. Estimate \$40 - 60



- 24 ★★ **Canada, War Tax, 1915, King George V "Admiral", 1¢ to 2¢ complete (Scott MR1-MR2)**, set of 2, o.g., never hinged, Very Fine. Scott \$165. Estimate \$60 - 80



- 25 ○ **Ceylon, 1859, Queen Victoria, 4d dull rose, imperf., Large Star watermark (Scott 5)**, 4 margins, quite fresh, lightly canceled, Fine, a lovely example of a very scarce stamp. Scott \$5,250. SG 4; £4,500 (\$5,780). Estimate \$800 - 1,200



Ex 26

- 26 ★★ **Falkland Islands**, 1960, Queen Elizabeth II Pictorials, ½d to £1 complete (Scott 128-142), set of 15, o.g., never hinged, Very Fine. Scott \$186. SG 193/207; £180 (\$230).
Estimate \$60 - 80



- 27 ★ **Hong Kong**, 1865, Queen Victoria, 48¢ rose carmine, Crown CC watermark (Scott 21), o.g., hinged, Fine. Scott \$1,325. SG 17a; £1,100 (\$1,410). Yang 17a. Estimate \$250 - 350



- 28 ★ **India - China Expeditionary Force**, 1900, "C.E.F." on Queen Victoria, 3p-1r complete plus (Scott M1-M10, M11, M12-20), also 1904, "C.E.F." on Queen Victoria, 1a carmine (o.g., n.h.); and 1905-11, "C.E.F." on King Edward VII, 3p to 1r complete, two lovely complete sets, o.g., hinged, Fine to Very Fine. Scott \$274. SG C1/10, C11, C12/20; £215 (\$280). Estimate \$75 - 100



- 29 ★ **India - China Expeditionary Force**, 1914-22, "C.E.F." on King George V, 3p to 1r complete (Scott M23-M33), set of 11, o.g., lightly hinged, Fine to Very Fine. Scott \$374. SG C23/C34; £350 (\$450). Estimate \$120 - 180



- 30 ★ **Kuwait**, 1939, King George VI, ½a to 15r complete (Scott 45-57), set of 13, o.g., mostly very lightly hinged, mostly Very Fine. Scott \$248. SG 36/51. Estimate \$75 - 100



- 31 ★ **Kuwait**, Airmail, 1933-34, First Issue complete (Scott C1-C4), set of 4, o.g., lightly hinged, Fine to Very Fine. Scott \$197. SG 31/34. Estimate \$60 - 80



- 32 ★ **Kuwait**, Officials, 1923-24, King George V, ½a to 15r complete (Scott O1-O14), o.g., hinged, Fine to Very Fine. Scott \$939. SG O1/O14; £850 (\$1,090). Estimate \$300 - 400



- 33 ★ **Mesopotamia: British Occupation of Iraq**, 1918-21, overprinted Turkish Pictorial issue complete (Scott N28-N41), set of 14, o.g., hinged; 1r with light crease, otherwise Fine to Very Fine. Scott \$177. SG 1/14; £200 (\$260). Estimate \$50 - 75



- 34 ★ **North Borneo**, 1939, Pictorial definitive set, 1¢ to \$5 complete (Scott 193-207), set of 15, o.g., mostly lightly hinged (5r with small hinge remnant). Scott \$712. SG 303/317. Estimate \$200 - 300



- 35 ★ **Seychelles, 1903-06, King Edward VII definitives, all 3 sets complete (Scott 38-48, 49-51, 52-62), o.g., hinged or hinge remnant, Fine to Very Fine. Scott \$331. SG 46/56, 57/59, 60/71; £324 (\$420). Estimate \$100 - 150**



- 36 ★ **Seychelles, 1921-28, King George V, 2¢ to 5r complete, Multiple Script CA watermark (Scott 91-114), set of 24, o.g., hinged or hinge remnant; 2.25r with some gum toning (catalog value \$21), Fine to Very Fine overall. Scott \$241. SG 98/123; £200 (\$260). Estimate \$75 - 100**



- 37 ★★ **Southern Rhodesia, 1937, King George VI, ½d to 5s complete (Scott 42-54), set of 13, o.g., never hinged, Very Fine. Scott \$85. SG 40/52; £85 (\$110). Estimate \$30 - 40**

East Asia

China (People's Republic)



- 38 ★★ **China (People's Republic), 1963, Athletic Games of New Emerging Forces (C100) complete, set of 5, o.g., never hinged, Fine to Very Fine. Scott 732-736; \$141. Estimate \$60 - 80**



- 39 ○ **China (People's Republic), 1964, 15th Anniversary of the People's Republic (C106) complete, se-tenant strip of 3, neat Peking cancels, Very Fine. Scott 798b; \$80. Estimate \$35 - 50**



- 40 (★) **China (People's Republic), 1951, National Emblem (S1) complete**, set of 5, without gum as issued, Fine to Very Fine. Scott 117-121; \$74. Estimate \$35 - 50



- 41 (★) **China (People's Republic), 1959, People's Communes (S35) complete**, set of 12, without gum as issued, Fine to Very Fine. Scott 426-437; \$60. Estimate \$30 - 40



- 42 ★★ **China (People's Republic), 1960, Beijing Railway Station (S42) complete**, a premium set of 2 imprint singles, o.g., never hinged, Very Fine. Scott 527-528; \$115+.

Estimate \$50 - 75



- 43 ○ **China (People's Republic), 1960-61, Chrysanthemums (S44) complete**, set of 18, neat Peking corner cancels, Fine to Very Fine. Scott 542-559; \$121. Estimate \$50 - 75



- 44 ○ **China (People's Republic), 1963, Butterflies (S56) complete**, set of 20, neat Peking corner cancels, Fine to Very Fine. Scott 661-680; \$109. Estimate \$40 - 60



- 45 ○ **China (People's Republic), 1963, Hwangshan (Yellow Mountain) Landscapes (S57) complete**, set of 16, all lightly canceled, Fine to Very Fine. Scott 716-731; \$206. Estimate \$75 - 100



- 46 ★★ **China (People's Republic), 1964, 50f Chinese Peonies (S61), o.g., never hinged**, Very Fine. Scott 781; \$240. Estimate \$100 - 150



- 47 ○ **China (People's Republic), 1964, Petroleum Industry (S67) complete**, set of 5, neat Peking corner cancels, Fine to Very Fine. Scott 799-803; \$72. Estimate \$35 - 50



- 48 ★★ **China (People's Republic), 1964, Chemical Industry (S69) complete**, set of 8, o.g., never hinged, Fine to Very Fine. Scott 810-817; \$80. Estimate \$40 - 60



- 49 ★★ **China (People's Republic), 1965, Chinese Mountaineering Achievements (S70) complete**, set of 5, o.g., never hinged, Fine to Very Fine. Scott 828-832; \$85. Estimate \$40 - 60



- 50 ★★ **China (People's Republic), 1967, 10f Mao Writing Poem (W7), o.g., never hinged, Very Fine.** Scott 980; \$145. Estimate \$60 - 80



- 51 (★) **China (People's Republic), 1969, Defense of Chen Pao-tao (W19) complete**, set of 5, without gum as issued, Fine to Very Fine. Scott 1011-1015; \$131. Estimate \$60 - 80



- 52 (★) **China (People's Republic), 1971, Paris Commune (N3) complete**, set of 4, without gum as issued, Fine to Very Fine. Scott 1054-1057; \$257. Estimate \$100 - 150



- 53 (★) **China (People's Republic), 1971, 8f Chinese Communist Party 50th Anniversary (N4)**, without gum as issued, Very Fine. Scott 1071; \$70. Estimate \$35 - 50



- 54 (★) **China (People's Republic), 1972, Ships (N7) complete**, set of 4, without gum as issued, Very Fine. Scott 1095-1098; \$220. Estimate \$75 - 100



- 55 ★★ **China (People's Republic), 1972, Mao's Edict on Physical Culture (N9) complete**, set of 5, o.g., never hinged, Fine to Very Fine. Scott 1090-1094; \$141. Estimate \$60 - 80



- 56 (★) **China (People's Republic), 1972, Wang Jinxi (N10)**, without gum as issued, Very Fine. Scott 1103; \$65. Estimate \$30 - 40



- 57 ★★ **China (People's Republic), 1973, "The White-haired Girl" (N13) complete**, o.g., never hinged, Very Fine. Scott 1126-1129; \$175.
Estimate \$75 - 100



- 60 ★★ **China (People's Republic), 1973, Children's Song and Dances (N19) complete**, corner margin se-tenant strip of 5 with imprint, o.g., never hinged; lightly folded along vertical perfs at far left, Very Fine. Scott 1121a; \$60.
Estimate \$35 - 50



- 58 ★★ **China (People's Republic), 1973, Historical Relics (N16) complete**, set of 12 left margin singles, o.g., never hinged, Very Fine. Scott 1131-1142; \$71.
Estimate \$35 - 50



- 61 ★★ **China (People's Republic), 1975, National People's Congress (J5) complete**, set of 3, o.g., never hinged, Very Fine. Scott 1215-1217; \$61.
Estimate \$30 - 40



- 59 ★★ **China (People's Republic), 1973, Historical Relics (N16) complete**, set of 12, o.g., never hinged, Fine to Very Fine. Scott 1131-1142; \$71.
Estimate \$30 - 40



- 62 ★★ **China (People's Republic), 1979, Hong Kong Exhibition souvenir sheet (J42M),** o.g., never hinged, Very Fine. Scott 1541; \$400.
Estimate \$150 - 200



- 63 ★★ **China (People's Republic), 1979, 30th Anniversary of Founding of PRC (2nd Series) souvenir sheet (J45),** o.g., never hinged, Very Fine. Scott 1501; \$110. Estimate \$50 - 75



- 64 ★★ **China (People's Republic), 1974, Gymnastics (T1) complete, set of 6, o.g., never hinged, Fine to Very Fine.** Scott 1143-1148; \$65.
Estimate \$30 - 40



- 65 ★★ **China (People's Republic), 1975, Rural Women Teachers (T9) complete, set of 4 right margin singles, o.g., never hinged, Very Fine.** Scott 1218-1221; \$86. Estimate \$35 - 50



- 66 ★★ **China (People's Republic), 1975, Rural Women Teachers (T9) complete**, set of 4, o.g., never hinged, Very Fine. Scott 1218-1221; \$85. Estimate \$35 - 50



- 67 ★★ **China (People's Republic), 1978, Galloping Horses (T28) complete**, set of 10 plate number singles, o.g., never hinged, Very Fine. Scott 1389-1398; \$72. Estimate \$35 - 50



- 68 ★★ **China (People's Republic), 1978, Galloping Horses souvenir sheet (T28M)**, o.g., never hinged, Very Fine. Scott 1399; \$550. Estimate \$250 - 350



- 69 ★★ **China (People's Republic), 1978, Arts and Crafts souvenir sheet (T29M)**, o.g., never hinged, Very Fine. Scott 1433; \$300. Estimate \$120 - 180



- 70 ★★ **China (People's Republic), 1980, Qi Baishi Paintings (T44) complete**, set of 16, o.g., never hinged, Very Fine. Scott 1557-1572; \$130. Estimate \$60 - 80



- 71 ★★ **China (People's Republic), 1980, Peking Opera Masks (T45) complete**, set of 8, o.g., never hinged, Very Fine. Scott 1574-1581; \$63. Estimate \$30 - 40



- 72 ★★ **China (People's Republic), 1980, Lotus (T54) complete**, set of 4, o.g., never hinged, Fine to Very Fine. Scott 1613-1616; \$78. Estimate \$35 - 50



- 73 ★★ **China (People's Republic), 1980, Lotus souvenir sheet (T54M)**, o.g., never hinged, Very Fine. Scott 1617; \$250. Estimate \$100 - 150



- 74 ★★ **China (People's Republic), 1980, Liu Yuan (Tarrying Garden) in Suzhou (T56) complete, set of 4, o.g., never hinged, Fine to Very Fine. Scott 1632-1635; \$89. Estimate \$35 - 50**



- 75 ★★a **China (People's Republic), 1981, Year of the Cock (T58), corner margin block of 4, o.g., never hinged, Very Fine. Scott 1647; \$140. Estimate \$60 - 80**



- 76 ★★ **China (People's Republic), 1981, Dream of Red Mansions souvenir sheet (T69M), o.g., never hinged, Very Fine. Scott 1761; \$210. Estimate \$80 - 120**



- 77 ★★ **China (People's Republic), 1983, "The Western Chamber" souvenir sheet (T82M), o.g., never hinged, Very Fine. Scott 1844; \$155. Estimate \$80 - 120**



- 78 ★★a **China (People's Republic), 1983, Female Roles in Beijing Opera (T87) complete, blocks of 4, o.g., never hinged, Fine to Very Fine. Scott 1864-1871; \$182. Estimate \$60 - 80**



- 79 ★★ **China (People's Republic), 1983, Terra Cotta Warriors souvenir sheet (T88M),** o.g., never hinged, Very Fine. Scott 1863; \$80.
Estimate \$35 - 50



- 82 ★★ **China (People's Republic), Booklet, 1983, Terra Cotta Warriors (SB9),** complete and unexploded, o.g., never hinged, Fine to Very Fine. Scott 1863a var.; \$100. Estimate \$40 - 60



- 80 ★★ **China (People's Republic), 1984, "Beauties Wearing Flowers" souvenir sheet (T89M),** o.g., never hinged, Very Fine. Scott 1904; \$210.
Estimate \$60 - 80



- 81 ★★ **China (People's Republic), Booklet, 1981, Year of the Cock (SB3),** complete and unexploded, o.g., never hinged, Fine to Very Fine. Scott 1647a var.; \$300. Estimate \$120 - 180

Macao



- 83 ★★ **Macao, 1976, Pagodas complete**, set of 2, o.g., never hinged, Very Fine. Scott \$65. Scott 437-438. Estimate \$30 - 40



- 84 ★★ **Macao, 1978, Legislative Assembly complete**, set of 2, o.g., never hinged, Very Fine. Scott \$352. Scott 440-442. Estimate \$150 - 200



- 85 ★★a **Macao, 1982, Autumn Festivals complete**, set of 4, corner margin blocks of 4, o.g., never hinged, Very Fine. Scott \$260. Scott 463-466. Estimate \$100 - 150



- 86 ★★ **Macao, 1983, Medicinal Plants souvenir sheet**, o.g., never hinged, Very Fine. Scott \$275. Scott 482a. Estimate \$100 - 150



- 87 ★★a **Macao, 1984, Ausipex 84 complete**, corner margin imprint blocks of 4, o.g., never hinged, Very Fine. Scott \$152. Scott 494-499.
Estimate \$60 - 80



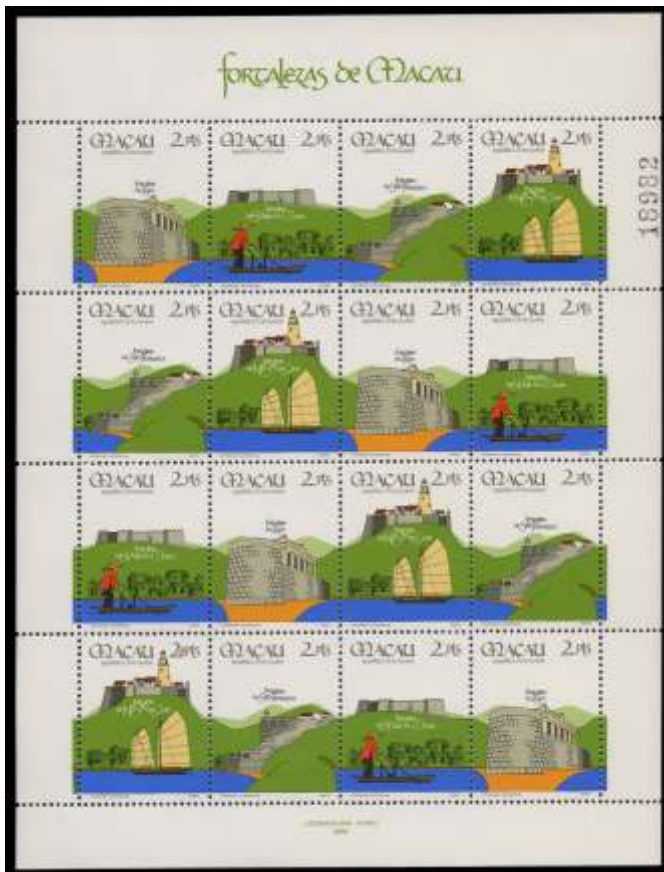
- 88 ★★ **Macao, 1985, Butterflies souvenir sheet**, o.g., never hinged, Very Fine. Scott \$275. Scott 517a.
Estimate \$100 - 150



- 89 ★★ **Macao, 1986, AMERIPEX 86 complete**, set of 6, o.g., never hinged, Very Fine. Scott \$100. Scott 524-529.
Estimate \$40 - 60



- 90 ★★ **Macao, 1986, AMERIPEX 86 souvenir sheet**, o.g., never hinged, Very Fine. Scott \$375. Scott 529a. Estimate \$150 - 200



- 91 ★★a **Macao, 1986, Fortresses complete**, complete sheet of 4 se-tenant strips (or blocks) of 4, o.g., never hinged, Very Fine. Scott \$400. Scott 537a. Estimate \$150 - 200



- 92 ★★ **Macao, 1986, Sun Yat-sen souvenir sheet**, o.g., never hinged, Very Fine. Scott \$90. Scott 539. Estimate \$40 - 60



- 93 ★★a **Macao, 1987, Shek Wan Ceramics complete**, complete sheet of 4 se-tenant strips (or blocks) of 4, o.g., never hinged, Very Fine. Scott \$180. Scott 544a. Estimate \$75 - 100



- 94 ★★a **Macao, 1987, Casino Gambling complete**, set of 4, blocks of 4, o.g., never hinged, Very Fine. Scott \$260. Scott 551-554.
Estimate \$100 - 150



- 95 ★★ **Macao, 1988, Transport souvenir sheet**, o.g., never hinged, Very Fine. Scott \$90. Scott 572.
Estimate \$40 - 60



- 96 ★★ **Macao, 1988, Olympic Games souvenir sheet**, o.g., never hinged, Very Fine. Scott \$100. Scott 577.
Estimate \$40 - 60

Europe

Austria through Yugoslavia



- 97 ★ **Austria, 1867, Franz Joseph** (coarse printing), 25kr brown violet (Scott 32b), o.g., lightly hinged, Fine. Scott \$325. Michel 40 I f; €500 (\$540). Estimate \$80 - 120



Ex 98

- 98 ★ **Austria, Airmail, 1950-53, Birds, 60g to 20s complete (Scott C54-C60)**, set of 7, o.g., very lightly hinged, Very Fine. Scott \$150. Michel 955-956, 968, 984-987. Estimate \$50 - 75



- 99 ○ **Austria: Lombardy-Venetia, 1859, Franz Joseph, 15s blue, type II (Scott 12)**, Fine to Very Fine. Scott \$115. Michel 11 II. Sassone 32; €320 (\$350). Estimate \$40 - 60

- 100 No lot.



- 101 ★ **France, 1931, La Rochelle, 10fr dark ultramarine, type III; and Pont du Gard, 20fr orange brown, perf. 13 (Scott 252, 254A)**, well centered, o.g., lightly hinged, Very Fine. Scott \$320. Yvert 261, 262; €409 (\$450).

Estimate \$80 - 120



- 102 ○ **Germany, 1872, Small Shield, 18kr bister (Scott 11)**, fresh color and clear embossing, light c.d.s., fully sound and without faults, Fine. Scott \$360. Michel 11; €500 (\$540).

Estimate \$100 - 150



- 103 ○ **Germany, 1872, Large Shield, 2kr orange (Scott 22)**, neat c.d.s. (Zottensacham?); tiny thin, otherwise Fine, a very collectible example of a very scarce used stamp. Scott \$2,250. Michel 24; €3,200 (\$3,490). Estimate \$250 - 350



- 104 ○ **Germany, 1872, Large Shield, 9kr red brown (Scott 25)**, fresh and well centered, tied on piece by Carlsruhe Baden 1874 c.d.s., Very Fine. Scott \$375. Michel 27a; €450 (\$490).
Estimate \$100 - 150



- 106 ★★ **Germany, 1930, IPOSTA souvenir sheet (Scott B33)**, o.g., never hinged, Very Fine; signed Schlegel. Scott \$1,200. Michel Block 1; €1,600 (\$1,740).
Estimate \$300 - 400



- 105 ★★ **Germany, 1930, IPOSTA souvenir sheet (Scott B33)**, o.g., never hinged, Very Fine. Scott \$1,200. Michel Block 1; €1,600 (\$1,740).
Estimate \$300 - 400



Ex 107

- 107 ○ **Germany, 1936-37, a group of 6 different souvenir sheets (Scott B91-92, B102-105)**, including Olympics, Hitler and Brown Ribbon Horse Race, each with neat commemorative cancels; the first 2 Hitler souvenir sheets (B102 and B103, catalog value \$33.50) with a small thin, otherwise Very Fine. Scott \$335. Michel Block 5-10; €446 (\$490). Estimate \$75 - 100



- 108 ✉ **Germany, Airmail, 1930, So. America Flight Zeppelins complete (Scott C38-C39)**, used on a 1931 South America Flight cover from Friedrichshafen to Brazil, then via Dornier-DO X catapult flight to New York, Very Fine; signed Arth. Falk. Scott \$675. Michel 438-439. Estimate \$100 - 150



- 109 ★★a **Germany, Airmail, 1933, 2m Chicago Flight Zeppelin (Scott C44)**, block of 4, o.g., never hinged, Very Fine; signed Bühler. Scott \$1,040. Michel 497; €1,400 (\$1,530). Estimate \$300 - 400



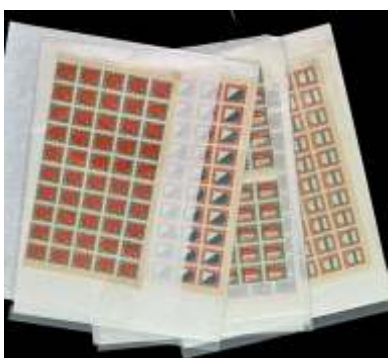
- 110 ★★a **Germany, Airmail, 1933, 4m Chicago Flight Zeppelin (Scott C45)**, block of 4, o.g., never hinged, Very Fine. Scott \$1,040. Michel 498; €1,400 (\$1,530). Estimate \$300 - 400



- 111 ★★ **Germany: Berlin, 1949, Currency Victims souvenir sheet (Scott 9NB3a)**, o.g., never hinged (usual minor gum wrinkles), Very Fine. Scott \$975. Michel Block 1; €950 (\$1,040). Estimate \$200 - 300



- 112 ○ **Liechtenstein**, 1915, Prince Johann II, normal paper, 5h to 25h complete (Scott 1a-3a), set of 3, neat c.d.s.'s, Very Fine. Scott \$254. Michel 1 y-3 y a. Zumstein 1y-3y. Estimate \$75 - 100



- 113 ★★a **Switzerland**, 1920-22, Pro Juventute, 3 different complete sets in half sheets of 50 (Scott B15-B24), o.g., never hinged, Very Fine. Scott \$5,550. Michel 153-155, 172-178; €5,000 (\$5,450). Zumstein 15-24; 6,700 SFr (\$6,820). Estimate \$300 - 400



- 114 ★★ **Vatican**, 1952, Stamp Centenary souvenir sheet (Scott 155a), o.g., never hinged, Very Fine. Scott \$160. Sassone Foglietto 1; €325 (\$350). Estimate \$50 - 75



- 115 ○ **Yugoslavia**, Airmail, 1949, Railway souvenir sheets, perf. and imperf. complete (Scott C33, C33a), set of 2, neat matching Zemun 1949 c.d.s.'s, Very Fine. Scott \$210. Estimate \$60 - 80

Latin America

Argentina through Venezuela



- 116 ○ **Argentina, 1858, Argentine Confederation complete (Scott 1-3)**, set of 3, Fine to Very Fine. Scott \$380. Estimate \$100 - 150



- 117 ★ **Argentina, 1863, Seal of the Republic, 5c rose lilac (Scott 7Ci)**, hinge remnant, Very Fine. Scott \$200. Estimate \$75 - 100



- 118 ★ **Argentina, 1863, Seal of the Republic, 10c yellow green (Scott 7F)**, o.g., hinged, Fine to Very Fine. Scott \$1,000. Estimate \$200 - 300



- 119 ○ **Argentina, 1863, Seal of the Republic, 10c yellow green (Scott 7F)**, neat cancel, Fine to Very Fine. Scott \$250. Estimate \$75 - 100



- 120 ★ **Argentina, 1864, Seal of the Republic, 5c rose red (Scott 7H)**, o.g., hinge remnant, Very Fine. Scott \$225. Estimate \$75 - 100



- 121 ○ **Argentina, 1864, Rivadavia, 5c brown rose, imperf., watermarked (Scott 8)**, Fine. Scott \$250. Estimate \$60 - 80



- 122 ○ **Argentina, 1864, Rivadavia, 10c green, imperf., watermarked (Scott 9)**, Fine. Scott \$1,750. Estimate \$350 - 500



- 123 ○ **Argentina, 1864, Rivadavia, 15c blue, imperf., watermarked (Scott 10)**, Fine. Scott \$6,500. Estimate \$1,500 - 2,000



- 124 ★ **Argentina, 1923, San Martín, 5p to 20p, perf. 13½, "RA" in Sun watermark (Scott 354-356)**, a lovely group of 3 high values, o.g., hinged, Fine to Very Fine. Scott \$230.

Estimate \$75 - 100



- 125 ○ **Bolivia, 1867, Condor, 10c brown, imperf. (Scott 4), Fine.** Scott \$350. Estimate \$75 - 100



- 126 ★ **Brazil, 1843, First Issue ("Bull's Eye"), 60r black (Scott 2), o.g., hinged, Very Fine.** Scott \$825. Estimate \$250 - 350



- 127 (★) **Brazil, 1850, Numeral Issue, imperf., 180r black (Scott 26), jumbo margins, unused without gum, Extremely Fine.** Scott \$115. Estimate \$50 - 75



- 128 ○ **Brazil, 1861, Numeral Issue, imperf., 280r red and 430r yellow (Scott 39, 40), full margined examples, o.g., hinge remnants, Very Fine.** Scott \$270. Estimate \$75 - 100



- 129 ○ **Brazil, 1876-77, Emperor Pedro, rouletted, 10r to 500r complete (Scott 61-67), set of 7, Fine to Very Fine.** Scott \$147. Estimate \$50 - 75



- 130 ★ **Brazil, 1881, Emperor Pedro ("Small Head"), 50r to 200r complete (Scott 79-81), all with unobtrusive cancels, Fine to Very Fine.** Scott \$212. Estimate \$60 - 80



- 131 (★) **Brazil, 1882, Emperor Pedro, 100r dark green, type II (Scott 83b), unused without gum, Fine; with 1988 P.F. certificate, ex-Gilbert.** Scott \$425. Estimate \$100 - 150



- 132 ○ **Brazil, 1888, Numeral, 100r to 1,000r complete (Scott 96-98), set of 3, Fine to Very Fine.** Scott \$222. Estimate \$60 - 80



- 133 ○ **Chile, 1853, Columbus, 10c deep bright blue on blued, London printing, "10" watermark (Scott 2a), Very Fine.** Scott \$225.
Estimate \$60 - 80



- 134 ○ **Chile, 1854, Columbus, 10c deep blue, Santiago printing, "10" watermark (Scott 5), Fine.** Scott \$275.
Estimate \$60 - 80



- 135 ▲ **Colombia, 1859, Coat of Arms, 5c blue and 10c buff (Scott 2, 4a), tied on piece by Cali postmark, Fine.** Scott \$168.
Estimate \$50 - 75



- 136 ○ **Colombia, 1859, Coat of Arms, 1p carmine (Scott 7), pen and BOGOTA cancels, Very Fine.** Scott \$120.
Estimate \$40 - 60



- 137 ○ **Colombia, 1862, Coat of Arms, 10c blue, 2c red and 50c green (Scott 19, 20, 21), group of 3, a lovely trio of stamps, Fine to Very Fine.** Scott \$1,010.
Estimate \$150 - 200



- 138 ○ **Colombia, 1862, Coat of Arms, 5p black on green (Scott 51), manuscript cancel, Fine to Very Fine.** Scott \$190.
Estimate \$60 - 80



- 139 ★ **Dominican Republic, 1867, Coat of Arms, ½r black on greenish gray (Scott 16), horizontal pair, o.g., hinged, Very Fine.** Scott \$520.
Estimate \$150 - 200



- 140 ★ **Mexico, 1866, Emperor Maximilian (engraved), 7c lilac (Scott 31), o.g., heavy hinge remnants, Fine to Very Fine.** Scott \$450.
Estimate \$100 - 150



- 141 ○ **Mexico, 1867, Gothic "Mexico", 2r black on pink, printed on both sides (Scott 37a), Fine to Very Fine.** Scott \$140.
Estimate \$40 - 60



- 142 ○ **Mexico, 1868, Hidalgo (thin figures, perforated), 100c brown on brown (Scott 57), Fine to Very Fine.** Scott \$375.
Estimate \$120 - 180



- 143 ○ **Mexico**, 1879, Foreign Mail 1st Issue (Juarez), 50c green, without district overprint (Scott 128a), Fine to Very Fine. Scott \$150. Estimate \$50 - 75



- 144 ○ **Mexico**, 1882, Foreign Mail 2nd Issue (Juarez), 50c yellow, "Mexico" district overprint (Scott 142), Fine. Scott \$350. Estimate \$75 - 100



- 145 (★)a **Mexico**, 1914, Sonora Issue, 3¢ black and red, with colorless roulette (Scott 325), tête-bêche block of 9 (from the full sheet of 10), without gum as issued; some separations, Fine to Very Fine. Scott \$878. Estimate \$150 - 200



- 146 ○ **Nicaragua**, 1918, National Palace, 5c on 15c deep violet, surcharged in black (Scott 364C), lightly struck purple cancel, Fine. Scott \$350. Estimate \$75 - 100



- 147 ○ **Paraguay**, 1870, Lion and Liberty Cap, 2r blue (Scott 2), light cancel, Fine. Scott \$120. Estimate \$40 - 60



- 148 ○ **Paraguay**, 1878, Lion and Liberty Cap, "5" surcharged in black on 1r rose (Scott 4), large margins all around, neat c.d.s., Very Fine. Scott \$120. Estimate \$40 - 60



- 149 ○ **Paraguay**, 1878, Lion and Liberty Cap, "5" surcharged in blue on 3r black (Scott 6), Fine. Scott \$650. Estimate \$100 - 150



- 150 ★ **Peru**, 1881, Coat of Arms with "U.P.U. LIMA" in oval, 50c green (Scott 41), o.g., hinged, Fine to Very Fine. Scott \$750. Estimate \$200 - 300



- 151 ★ **Peru, 1915, Lima City Hall, 2c on 10c red brown & black (Scott 193C), o.g., lightly hinged, Very Fine. Scott \$175. Estimate \$50 - 75**



- 152 ○ **Uruguay, 1860, "Montevideo" and Sun, 180c yellow green, thick numerals (Scott 17), Very Fine. Scott \$375. Estimate \$120 - 180**



- 153 ★★ **Uruguay, Airmail, 1939, Plane over Oxcart, 10p rose (Scott C105), o.g., never hinged, Very Fine. Scott \$100. Estimate \$30 - 40**



- 154 ★ **Venezuela, 1863, Eagle, ½c to 2r complete (Scott 10-14), set of 5, o.g., hinged, Fine to Very Fine. Scott \$165. Estimate \$50 - 75**



- 155 ▲ **Venezuela, 1859, Coat of Arms (coarse impression), 1r blue, single + a bisect used on piece (Scott 5, 5c), Fine to Very Fine. The bisect on a full cover catalogs \$7500. Estimate \$75 - 100**



- 156 ★ **Venezuela, 1859, Coat of Arms, ½r to 2r complete (Scott 1-3), o.g., hinge remnants, Fine to Very Fine. Scott \$553. Estimate \$120 - 180**



- 157 ★ **Venezuela, 1873, Coat of Arms, overprinted "Contraseña-Stampillas de Correo", 2r yellow (Scott 39), o.g., hinge remnant, Fine to Very Fine. Scott \$300. Estimate \$80 - 120**



- 158 (★) **Venezuela, 1893, Simón Bolívar, 25c yellow brown, overprint in black (Scott 110c), unused without gum, Fine to Very Fine. Scott \$500 for o.g. Estimate \$75 - 100**

- 159 ★ **Venezuela, 1896, Map issue complete (Scott 137-141), set of 5, o.g., hinged, Fine to Very Fine. Scott \$106. Estimate \$30 - 40**

U.S. Stamps

1847-1860 Issues



- 160 ○ 1847, 5¢ Franklin, red brown (Scott 1), cut close, with margins in places, blue town cancel, Very Good. Scott \$425.
Estimate \$100 - 150



- 161 ○ 1847, 5¢ Franklin, red brown (Scott 1), 4 ample margins, faded manuscript cancel; thinned at top, Very Fine appearance. Scott \$250.
Estimate \$75 - 100



- 162 ○ 1847, 10¢ Washington, black (Scott 2), counterfeit cancel in blue ink, Fine to Very Fine centering; with 2024 P.F. certificate. Scott \$850.
Estimate \$100 - 150



- 163 ○ 1851, 1¢ Franklin, blue, type II (Scott 7), clear to large margins all around, town cancel in blue, Fine to Very Fine. Scott \$148.
Estimate \$75 - 100



- 164 ○ 1851, 1¢ Franklin, blue, type II (Scott 7), large margins at the sides to just touching at top, town cancel in blue, Fine to Very Fine. Scott \$148.
Estimate \$75 - 100



- 165 ○ 1855, 10¢ Washington, green, type II (Scott 14), 4 large margins, black grid cancel and portions of a red transit cancel; a faint crease at bottom, otherwise Very Fine. Scott \$170.
Estimate \$75 - 100



- 166 ○ 1855, 10¢ Washington, green, type III (Scott 15), 4 large margins, neat town cancel, Very Fine. Scott \$145.
Estimate \$80 - 120



- 167 ○ 1855, 10¢ Washington, green, type III (Scott 15), 4 ample margins, faint town cancel; a tiny thin speck, otherwise Very Fine. Scott \$145.
Estimate \$75 - 100



- 168 ○ 1855, 10¢ Washington, green, type III (Scott 15), 4 margins, MAIL postmark in blue, Fine. Scott \$155. Estimate \$60 - 80



- 169 ○ 1855, 10¢ Washington, green, type III (Scott 15), large margins except just cutting at bottom, bold red town cancel, nearly Fine. Scott \$145. Estimate \$50 - 75



- 170 ○ 1851, 12¢ Washington, gray black (Scott 17), 3 ample margins, with black grid and trace of a red cancel, Very Good. Scott \$260. Estimate \$50 - 75



- 171 ○ 1857, 1¢ Franklin, blue, type II (Scott 20), plate 2, light cancel, Fine. Scott \$275. Estimate \$60 - 80



- 172 ○ 1857, 5¢ Jefferson, red brown, type I (Scott 28), deep shade, nicely centered, lightly struck red grid cancel; a shallow thin, otherwise Fine to Very Fine. Scott \$1,175. Estimate \$250 - 350



- 173 ○ 1857, 5¢ Jefferson, red brown, type I (Scott 28), lightly canceled; small thin, Fine appearance. Scott \$1,100. Estimate \$250 - 350



- 174 ○ 1857, 5¢ Jefferson, red brown, type I (Scott 28), light town cancel; some blunt perms at top, otherwise Fine. Scott \$1,100. Estimate \$250 - 350



- 175 ○ 1860, 5¢ Jefferson, brown, type II (Scott 30A), fresh color, neat grid cancel, Fine. Scott \$375. Estimate \$100 - 150



- 176 ○ 1860, 5¢ Jefferson, brown, type II (Scott 30A), lightly canceled; with three handstamps on reverse, Fine to Very Fine. Scott \$375. Estimate \$100 - 150



- 177 ○ 1860, 5¢ Jefferson, brown, type II (Scott 30A), grid cancel, Fine. Scott \$375. Estimate \$75 - 100



- 178 ○ 1857, 10¢ Washington, green, type II (Scott 32), Fine. Scott \$190. Estimate \$60 - 80



- 179 ○ 1857, 10¢ Washington, green, type III (Scott 33), light face-free cancel, Fine. Scott \$190. Estimate \$60 - 80



- 180 ○ 1857, 10¢ Washington, green, type III (Scott 33), lightly canceled, Fine. Scott \$190. Estimate \$60 - 80



- 181 ○ 1857, 12¢ Washington, black, plate I (Scott 36), lightly struck grid cancel, Fine. Scott \$325. Estimate \$80 - 120



- 182 ○ 1857, 12¢ Washington, black, plate I (Scott 36), very light pen cancel, Fine. Scott \$160. Estimate \$60 - 80



- 183 ○ 1860, 24¢ Washington, gray (Scott 37a), neatly struck grid cancel and a bit of premium red transit cancel, Very Fine. Scott \$465. Estimate \$300 - 400



- 184 ○ 1860, 30¢ Franklin, orange (Scott 38), ample to boardwalk margins, lightly canceled, Fine. Scott \$500. Estimate \$120 - 180

1861-1866 Issue



- 185 ○ 1861, 5¢ Jefferson, buff (Scott 67), beautifully fresh and well centered, light grid cancel; reperfed at right, otherwise Very Fine. Scott \$750. Estimate \$250 - 350



- 186 ○ 1861, 5¢ Jefferson, buff (Scott 67), attractive centering and fresh color, Baltimore c.d.s. in blue; reperfed at left, otherwise Fine to Very Fine. Scott \$780. Estimate \$200 - 300



- 187 ○ 1861, 10¢ Washington, green and dark green shades (Scott 68, 68a), black cancels, Fine to Very Fine. Scott \$150. Estimate \$50 - 75



- 188 ○ 1861, 12¢ Washington, black (Scott 69), target cancel with small amounts of red cancel, Average centering. Scott \$140. Estimate \$40 - 60



- 189 ○ 1862, 24¢ Washington, red lilac (Scott 70), Fine to Very Fine. Scott \$300. Estimate \$75 - 100



- 190 ○ 1862, 24¢ Washington, red lilac (Scott 70), Fine. Scott \$300. Estimate \$75 - 100



- 191 ○ 1862, 24¢ Washington, brown lilac (Scott 70a), Fine. Scott \$325. Estimate \$100 - 150



- 192 ○ 1861, 30¢ Franklin, orange (Scott 71), black cancel, Very Fine. Scott \$250. Estimate \$150 - 200



- 193 ○ 1861, 30¢ Franklin, orange (Scott 71), bright fresh color, red grid cancel, Fine. Scott \$285. Estimate \$75 - 100



- 194 ○ 1861, 30¢ Franklin, orange (Scott 71), red and black cancels, Fine. Scott \$295.
Estimate \$75 - 100



- 195 ○ 1861, 30¢ Franklin, orange (Scott 71), neat cancel, Fine to Very Fine. Scott \$250.
Estimate \$75 - 100



- 196 ○ 1861, 90¢ Washington, blue (Scott 72), Fine. Scott \$625. Estimate \$150 - 200



- 197 ○ 1861, 90¢ Washington, blue (Scott 72), Fine. Scott \$625. Estimate \$150 - 200



- 198 ○ 1861, 90¢ Washington, blue (Scott 72), almost face free cancel, Fine. Scott \$625.
Estimate \$100 - 150



- 199 ○ 1861, 90¢ Washington, blue (Scott 72), light cancel; diagonal crease, Very Good. Scott \$625.
Estimate \$75 - 100



- 200 ○ 1862, 5¢ Jefferson, red brown (Scott 75), deep rich color and lightly canceled, face free cancel, nearly Fine. Scott \$425.
Estimate \$75 - 100



- 201 ○ 1863, 5¢ Jefferson, brown (Scott 76), red and black cancels, Fine. Scott \$160.
Estimate \$50 - 75



- 202 ○ 1866, 15¢ Lincoln, black (Scott 77), Fine to Very Fine. Scott \$225. Estimate \$75 - 100



- 203 ○ 1863, 24¢ Washington, lilac (Scott 78), Fine. Scott \$425. Estimate \$80 - 120



- 204 ○ 1863, 24c Washington, lilac (Scott 78), Fine. Scott \$425. Estimate \$80 - 120



- 205 ○ 1863, 24c Washington, grayish lilac (Scott 78a), Fine. Scott \$450. Estimate \$80 - 120



- 206 ○ 1863, 24c Washington, gray (Scott 78b); light diagonal crease, otherwise Fine to Very Fine. Scott \$475. Estimate \$60 - 80



- 207 ○ 1861-69, a group of 8 used classics (Scott 72//120), including Scott #72, 87, 95, 97, 98, 100 (the 5c being the very thin paper variety), 119 and 120; all with light cancels and clear grills; the 30c is sound, the others with small faults), Fine or Fine appearance. Scott \$3,915. Estimate \$300 - 400

1867 Grilled Issues



- 208 ○ 1867, 2c Jackson, black, E. grill (Scott 87), about Fine. Scott \$200. Estimate \$40 - 60



- 209 ○ 1867, 10c Washington, green, E. grill (Scott 89), warm rich color and impression, black cancel, Fine to Very Fine. Scott \$350. Estimate \$100 - 150



- 210 ○ 1867, 10c Washington, green, E. grill (Scott 89), red circle-of-wedges cancel, Fine. Scott \$425. Estimate \$80 - 120



- 211 ○ 1867, 10c Washington, green, E. grill (Scott 89), neat c.d.s., Fine. Scott \$350. Estimate \$75 - 100



- 212 ○ 1867, 12¢ Washington and 15¢ Lincoln, E. grills (Scott 90, 91), Average centering. Scott \$1,000. Estimate \$100 - 150



- 217 ○ 1867, 12¢ Washington, black, F. grill (Scott 97), Fine. Scott \$260. Estimate \$60 - 80



- 213 ○ 1867, 15¢ Lincoln, black, E. grill (Scott 91), black cancel, Fine to Very Fine. Scott \$575. Estimate \$100 - 150



- 218 ○ 1867, 12¢ Washington, black, F. grill (Scott 97), Fine. Scott \$260. Estimate \$50 - 75



- 214 ○ 1867, 1¢ Franklin, blue, F. grill (Scott 92), Fine. Scott \$450. Estimate \$100 - 150



- 219 ○ 1867, 15¢ Lincoln, black, F. grill (Scott 98), Very Fine. Scott \$300. Estimate \$150 - 200



- 215 ○ 1867, 3¢ Washington, red, double F. grill (Scott 94 var.), neat target cancel, Fine to Very Fine. Listed in Scott but not priced. Estimate \$75 - 100



- 220 ○ 1867, 15¢ Lincoln, black, F. grill (Scott 98), red grid cancel; reperfed at top, Fine appearance. Scott \$400. Estimate \$80 - 120



- 216 ○ 1867, 10¢ Washington, yellow green, F. grill (Scott 96), light c.d.s.; repaired corner, Very Good. Scott \$275. Estimate \$30 - 40



- 221 ○ 1867, 15¢ Lincoln, black, F. grill (Scott 98), Fine. Scott \$275. Estimate \$60 - 80



- 222 ○ 1867, 15¢ Lincoln, black, F. grill (Scott 98), Very Good. Scott \$300.
Estimate \$40 - 60



- 226 ○ 1869, 6¢ Washington, ultramarine (Scott 115), neat cork cancel, Fine. Scott \$225.
Estimate \$60 - 80

1869 Pictorial Issue



- 223 ○ 1869, 1¢ Franklin, buff (Scott 112), enormous jumbo margins; reperfed at left, otherwise nearly Fine. Scott \$160. Estimate \$50 - 75



- 224 ○ 1869, 1¢ Franklin, buff (Scott 112), Fine to Very Fine. Scott \$160. Estimate \$50 - 75



- 225 Oa 1869, 3¢ Locomotive, ultramarine (Scott 114), block of 4, blue grid cancels; centered to top, Very Good, *used blocks are very scarce*. Scott \$570. Estimate \$100 - 150



- 227 ○ 1869, 10¢ Eagle and Shield, yellow (Scott 116), red and black cancels, Fine to Very Fine. Scott \$150. Estimate \$60 - 80



- 228 ○ 1869, 12¢ S.S. Adriatic, green (Scott 117), red and black cancels, Fine. Scott \$280. Estimate \$75 - 100



- 229 ○ 1869, 12¢ S.S. Adriatic, green (Scott 117), Fine to Very Fine. Scott \$130. Estimate \$50 - 75



- 230 ○ 1869, 15¢ to 90¢ Pictorials (Scott 118, 120-122), including Sc. #118 and #120 (appear sound), #121 (hinge remnant in UL covering a thin), #122 (large repaired tear at top center), lightly canceled, Fine appearing. Scott \$4,125.
Estimate \$500 - 750



- 231 ○ 1869, 15¢ Landing of Columbus, brown & blue, type I (Scott 118), faintly canceled (appears almost mint), centered to bottom; signed Bühler. Scott \$900.
Estimate \$150 - 200



- 232 ○ 1869, 15¢ Landing of Columbus, brown & blue, type I (Scott 118), lightly canceled, Fine. Scott \$900.
Estimate \$120 - 180



- 233 ○ 1869, 15¢ Landing of Columbus, brown & blue, type I (Scott 118), premium blue cancel; hinge remnant over thin, Fine appearance. Scott \$975.
Estimate \$100 - 150



- 234 ○ 1869, 15¢ Landing of Columbus, brown & blue, type II (Scott 119), a beauty with near perfect centering and a neat circle-of-wedges cancel; tiny thin at top, otherwise Extremely Fine. Scott \$200.
Estimate \$75 - 100



- 235 ○ 1869, 15¢ Landing of Columbus, brown & blue, type II (Scott 119), very lightly canceled, Fine. Scott \$200.
Estimate \$60 - 80



- 236 ○ 1869, 15¢ Landing of Columbus, brown & blue, type II (Scott 119), very lightly canceled; light corner crease, otherwise Fine. Scott \$200.
Estimate \$50 - 75



- 237 ○ 1869, 24¢ Declaration of Independence, green & violet (Scott 120), Fine. Scott \$675.
Estimate \$120 - 180



- 238 ○ 1869, 24¢ Declaration of Independence, green & violet (Scott 120), Fine. Scott \$675.
Estimate \$120 - 180



- 239 ○ 1869, 24¢ Declaration of Independence, green & violet (Scott 120), Fine. Scott \$675. Estimate \$120 - 180



- 240 ○ 1869, 24¢ Declaration of Independence, green & violet (Scott 120); reperforated at right, otherwise Fine to Very Fine; with 2021 P.S.A.G. certificate. Scott \$675. Estimate \$100 - 150



- 241 ○ 1869, 24¢ Declaration of Independence, green & violet (Scott 120), Fine. Scott \$675. Estimate \$80 - 120



- 242 ○ 1869, 24¢ Declaration of Independence, green & violet (Scott 120); small thin in center, otherwise Fine to Very Fine. Scott \$675. Estimate \$75 - 100



- 243 ○ 1869, 30¢ Shield, Eagle and Flags, ultramarine & carmine (Scott 121), beautifully well centered and lightly canceled; a faint crease, otherwise Extremely Fine. Scott \$450. Estimate \$150 - 200



- 244 ○ 1869, 30¢ Shield, Eagle and Flags, ultramarine & carmine (Scott 121), fresh colors, indistinct cancel, Fine; signed Bühler. Scott \$450. Estimate \$100 - 150

1870-1890 Bank Note Co. Issues



- 245 ○ 1870, 2¢ Jackson, red brown, H. grill, N.B.N.C. printing (Scott 135), Fine to Very Fine. Scott \$85. Estimate \$40 - 60



- 246 ○ 1870, 6¢ Lincoln, carmine, H. grill, N.B.N.C. printing (Scott 137), beautifully well centered, with an almost face free cancel; small tear at right seen under microscope, otherwise Very Fine to Extremely Fine; with 2020 P.S.E. certificate. Scott \$425. Estimate \$100 - 150



- 247 ○ 1870, 6¢ Lincoln, carmine, H. grill, N.B.N.C. printing (Scott 137), red and black cancels, Very Good to Fine. Scott \$500. Estimate \$100 - 150



- 248 ○ 1871, 7¢ Stanton, vermilion, H. grill, N.B.N.C. printing (Scott 138), attractive centering, neat New York Foreign Mail cancel; a light crease, otherwise Very Fine. Scott \$525. Estimate \$150 - 200



- 249 (★) 1870, 3¢ Washington, green, without grill, N.B.N.C. printing (Scott 147), unused without gum, Fine. Scott \$80. Estimate \$30 - 40



- 250 ○ 1871, 7¢ Stanton, vermilion, without grill, N.B.N.C. printing (Scott 149), Fine to Very Fine. Scott \$100. Estimate \$40 - 60



- 251 ○ 1870, 12¢ Clay, dull violet, without grill, N.B.N.C. printing (Scott 151), socked-on-the-nose circle-of-wedges cancel, Very Fine. Scott \$200. Estimate \$150 - 200



- 252 ○ 1870, 15¢ Webster, bright orange, without grill, N.B.N.C. printing (Scott 152), light cancel, Fine to Very Fine. Scott \$225. Estimate \$75 - 100



- 253 ○ 1870, 24¢ Scott, purple, without grill, N.B.N.C. printing (Scott 153), beautifully well centered, Very Fine. Scott \$225. Estimate \$120 - 180



- 254 ○ 1870, 24¢ Scott, purple, without grill, N.B.N.C. printing (Scott 153), with premium red cancel, Very Fine. Scott \$240. Estimate \$100 - 150



- 255 ○ 1870, 24¢ Scott, purple, without grill, N.B.N.C. printing (Scott 153), beautifully struck red circle-of-wedges cancel, Fine. Scott \$240. Estimate \$80 - 120



- 256 ○ 1870, 24¢ Scott, purple, without grill, N.B.N.C. printing (Scott 153), red New York Foreign Mail cancel, Fine. Scott \$240. Estimate \$75 - 100



- 257 ○ 1870, 24¢ Scott, purple, without grill, N.B.N.C. printing (Scott 153), faintly canceled, Fine. Scott \$225. Estimate \$75 - 100



- 258 ○ 1870, 24¢ Scott, purple, without grill, N.B.N.C. printing (Scott 153), Fine to Very Fine. Scott \$225. Estimate \$75 - 100



- 259 ○ 1870, 30¢ Hamilton, black, without grill, N.B.N.C. printing (Scott 154), red cork cancel, Fine. Scott \$350. Estimate \$80 - 120



- 260 ○ 1870, 30¢ Hamilton, black, without grill, N.B.N.C. printing (Scott 154), Fine. Scott \$300. Estimate \$75 - 100



- 261 ○ 1870, 30¢ Hamilton, black, without grill, N.B.N.C. printing (Scott 154), neat cancel, Fine. Scott \$300. Estimate \$75 - 100



- 262 ○ 1870, 90¢ Perry, carmine, without grill, N.B.N.C. printing (Scott 155), Fine. Scott \$350. Estimate \$100 - 150



- 263 ○ 1870, 90¢ Perry, carmine, without grill, N.B.N.C. printing (Scott 155), Fine. Scott \$350. Estimate \$75 - 100



- 264 ○ 1870, 90¢ Perry, carmine, without grill, N.B.N.C. printing (Scott 155), about Fine. Scott \$350. Estimate \$60 - 80



- 265 ★ 1873, 3¢ Washington, green, C.B.N.C. printing (Scott 158), bright fresh color, o.g., hinged, Fine to Very Fine. Scott \$110. Estimate \$40 - 60



- 266 ★ 1873, 3¢ Washington, green, C.B.N.C. printing (Scott 158), o.g., hinged, Fine to Very Fine. Scott \$110. Estimate \$40 - 60



- 267 ○ 1873, 7¢ Stanton, orange vermilion, C.B.N.C. printing (Scott 160), nicely centered, with an attractive New York Foreign Mail cancel, almost Very Fine. Scott \$90. Estimate \$40 - 60



- 268 ○ 1873, 7¢ Stanton, orange vermilion, C.B.N.C. printing (Scott 160), Fine to Very Fine. Scott \$90. Estimate \$30 - 40



- 269 ○ 1873, 12¢ Clay, blackish violet, C.B.N.C. printing (Scott 162), Fine to Very Fine. Scott \$150. Estimate \$50 - 75



- 270 ○ 1873, 12¢ Clay, blackish violet, C.B.N.C. printing (Scott 162), Fine to Very Fine. Scott \$150. Estimate \$50 - 75



- 274 ○ 1873, 15¢ Webster, yellow orange, C.B.N.C. printing (Scott 163), with secret mark, Fine. Scott \$160. Estimate \$40 - 60



- 271 ○ 1873, 15¢ Webster, yellow orange, C.B.N.C. printing (Scott 163), radiant color, negative "8" fancy cancel (Cole #NYC-19), Fine to Very Fine; with 2025 P.F. certificate. Scott \$160. Estimate \$100 - 150



- 275 ○ 1873, 30¢ Hamilton, gray black and greenish black shades, C.B.N.C. printing (Scott 165, 165 var.), a lovely pair of stamps, Fine to Very Fine. Scott \$300. Estimate \$80 - 120



- 272 ○ 1873, 15¢ Webster, yellow orange, C.B.N.C. printing (Scott 163), beautifully struck "leaf" cancel, Fine to Very Fine. Scott \$160. Estimate \$60 - 80



- 276 ○ 1873, 90¢ Perry, rose carmine, C.B.N.C. printing (Scott 166), lightly canceled, Fine. Scott \$325. Estimate \$80 - 120



- 273 ○ 1873, 15¢ Webster, yellow orange, C.B.N.C. printing (Scott 163), bulls eye cancel; minute corner crease at lower right, Fine to Very Fine overall; with 2024 P.S.A.G. certificate. Scott \$160. Estimate \$50 - 75



- 277 ○ 1873, 90¢ Perry, rose carmine, C.B.N.C. printing (Scott 166), lightly canceled, Fine. Scott \$325. Estimate \$75 - 100



- 278 ○ 1879, 10¢ Jefferson, brown, A.B.N.C. printing, with and without secret mark (Scott 187, 188), Fine to Very Fine. Scott \$75. Estimate \$30 - 40



- 282 ○ 1888, 30¢ Hamilton, orange brown (Scott 217), black duplex cancel, Fine to Very Fine; with 2025 P.S.A.G. certificate graded F-VF 75. Scott \$90. SMQ \$90. Estimate \$60 - 80



- 279 ○ 1879, 90¢ Perry, carmine, A.B.N.C. printing (Scott 191), Fine. Scott \$400. Estimate \$80 - 120



- 283 ○ 1888, 30¢ Hamilton, orange brown (Scott 217), neat light New York c.d.s., Fine to Very Fine. Scott \$90. Estimate \$30 - 40



- 280 ★★ 1887, 2¢ Washington, green (Scott 213), o.g., never hinged, almost Very Fine. Scott \$120. Estimate \$60 - 80



- 284 (★) 1888, 90¢ Perry, purple (Scott 218), excellent color and majestic centering, unused without gum; a small scuff at right, otherwise Extremely Fine. Scott \$250. Estimate \$100 - 150



- 281 ★★ 1887, 3¢ Washington, vermilion (Scott 214), brilliant color, o.g., never hinged, Fine to Very Fine. Scott \$190. Estimate \$75 - 100



- 285 ○ 1888, 90¢ Perry, purple (Scott 218), bright fresh color, lightly canceled, Fine. Scott \$225. Estimate \$60 - 80



- 286 ○ **1888, 90¢ Perry, purple (Scott 218)**, bright fresh color, light town cancels; reperfed on 2 sides, Fine to Very Fine appearance. Scott \$225. Estimate \$50 - 75



- 287 ★★ **1890, 1¢ Franklin, dull blue (Scott 219)**, o.g., never hinged, Very Fine to Extremely Fine; with 2021 P.S.E. certificate graded **VF-XF 85**. Scott \$70. SMQ \$180. Estimate \$120 - 180



- 288 ★★ **1890, 6¢ Garfield, brown red (Scott 224)**, large margins and bright rich color, o.g., never hinged, almost Very Fine. Scott \$160. Estimate \$60 - 80



- 289 ★★ **1890, 6¢ Garfield, brown red (Scott 224)**, o.g., never hinged, Fine to Very Fine; with 2003 P.F. certificate. Scott \$180. Estimate \$60 - 80



- 290 ★ **1890, 15¢ Clay, indigo (Scott 227)**, disturbed o.g., Fine. Scott \$180. Estimate \$40 - 60



- 291 ○ **1890, 90¢ Perry, orange (Scott 229)**, registry cancel, Fine to Very Fine; with 2024 P.S.E. certificate graded F-VF 75, ex-Grace. Scott \$140. SMQ \$110. Estimate \$75 - 100



- 292 ○ **1890, 90¢ Perry, orange (Scott 229)**, NY registry cancel, Fine to Very Fine. Scott \$140. Estimate \$60 - 80



- 293 ○ **1890, 90¢ Perry, orange (Scott 229)**, Very Fine. Scott \$140. Estimate \$50 - 75

1893 Columbian Issue



- 294 Pa 1893, 1¢ and 15¢ Columbians, plate proofs on India paper (Scott 230P3, 238P3), blocks of 4, large margins; 15¢ has a pin hole in the top left stamp, otherwise Fine to Very Fine. Scott \$620. Estimate \$120 - 180



- 295 ★★ 1893, 1¢ Columbian (Scott 230), exceptionally choice centering and bright fresh color, o.g., never hinged, Extremely Fine; with 2025 P.F. certificate graded **XF 90**. Scott \$33. SMQ \$100. Estimate \$75 - 100



- 296 ★ 1893, 2¢ Columbian (Scott 231), plate number single, beautifully well centered, o.g., never hinged but with black paper fibers on the reverse and counted as hinged, Extremely Fine. Scott \$13. Estimate \$40 - 60



- 297 ★ 1893, 3¢ Columbian (Scott 232), beautifully well centered, o.g., lightly hinged, Very Fine to Extremely Fine. Scott \$35. Estimate \$40 - 60



- 298 ★ 1893, 5¢ Columbian (Scott 234), part imprint single, o.g., barest trace of hinge, Extremely Fine; with 2025 P.S.E. certificate graded **XF 90**. Scott \$55. SMQ \$90. Estimate \$60 - 80



- 299 ★★ 1893, 6¢ Columbian (Scott 235), attractive centering, o.g., never hinged, almost Very Fine. Scott \$150. Estimate \$60 - 80



- 300 ★ 1893, 10¢ Columbian (Scott 237), razor sharp impression, o.g., lightly hinged, almost Very Fine; with 2025 P.F. certificate. Scott \$95. Estimate \$50 - 75



- 301 ★ 1893, 15¢ Columbian (Scott 238), o.g., hinged, Fine to Very Fine. Scott \$250. Estimate \$80 - 120



- 302 ○ 1893, 30¢ Columbian (Scott 239), light cancel, Fine to Very Fine. Scott \$90. Estimate \$40 - 60



- 303 ★ 1893, 50¢ Columbian (Scott 240), o.g. (slightly disturbed from hinge removal), Fine to Very Fine. Scott \$450. Estimate \$150 - 200



- 304 ○ 1893, 50¢ Columbian (Scott 240), well centered, with a very light town cancel; a filled thin at top center, otherwise Very Fine; with 2025 P.F. certificate. Scott \$200. Estimate \$100 - 150



- 305 ○ 1893, 50¢ Columbian (Scott 240), light cancel, Fine to Very Fine. Scott \$200. Estimate \$75 - 100



- 306 ○ 1893, 50¢ Columbian (Scott 240), Fine to Very Fine. Scott \$200. Estimate \$60 - 80



- 307 (★) 1893, \$1 Columbian (Scott 241), bright fresh color, unused without gum; light crease, Fine appearance. Scott \$500. Estimate \$100 - 150



- 308 ○ 1893, \$1 Columbian (Scott 241), nicely centered, with a duplex cancel, nearly Very Fine. Scott \$525. Estimate \$180 - 240



- 309 ○ 1893, \$1 Columbian (Scott 241), NY 1893 duplex cancel, Fine to Very Fine. Scott \$525. Estimate \$150 - 200



- 310 ○ 1893, \$1 Columbian (Scott 241),
NY duplex cancel, Fine. Scott \$525.
Estimate \$100 - 150



- 315 (★) 1893, \$2 Columbian (Scott 242),
regummed over a small thin, Very Fine appear-
ance. Scott \$550. Estimate \$100 - 150



- 311 ○ 1893, \$1 Columbian (Scott 241),
light oval cancel, Fine. Scott \$525.
Estimate \$100 - 150



- 316 ○ 1893, \$2 Columbian (Scott 242),
light New York oval cancel, Fine to Very Fine. Scott
\$550. Estimate \$200 - 300



- 312 ○ 1893, \$1 Columbian (Scott 241),
NY registry cancel, Fine. Scott \$525.
Estimate \$100 - 150



- 317 ○ 1893, \$2 Columbian (Scott 242),
neat New York registry cancel, Fine. Scott \$550.
Estimate \$150 - 200



- 313 ○ 1893, \$1 Columbian (Scott 241),
beautifully struck U.S. GERMAN SEA P.O. 1893
postmark, Fine. Scott \$525. Estimate \$100 - 150



- 318 ○ 1893, \$2 Columbian (Scott 242),
New York / Wall Street oval cancel, Fine. Scott
\$550. Estimate \$120 - 180



- 314 ○ 1893, \$1 Columbian (Scott 241),
light oval cancel, Fine. Scott \$525.
Estimate \$100 - 150



- 319 ○ 1893, \$2 Columbian (Scott 242),
light socked-on-the-nose c.d.s., Fine. Scott \$550.
Estimate \$120 - 180



- 320 ○ 1893, \$2 Columbian (Scott 242), neat New York parcel cancel; thinned, Fine appearance. Scott \$550. Estimate \$75 - 100



- 321 ★ 1893, \$3 Columbian (Scott 243), beautifully well centered, o.g., hinged; a few tiny thins, otherwise Extremely Fine. Scott \$1,500. Estimate \$600 - 800



- 322 ★ 1893, \$3 Columbian (Scott 243), part o.g. (glazed), with some gum in the margin at lower left, Fine to Very Fine centering. Scott \$1,500. Estimate \$300 - 400
For reference: Scott catalog value with gum is \$1,500, without gum is \$750.



- 323 ○ 1893, \$4 Columbian (Scott 244), lightly canceled, Very Good to Fine. Scott \$975. Estimate \$100 - 150



- 324 (★) 1893, \$5 Columbian (Scott 245), bright fresh color, unused without gum; couple small thins, Fine to Very Fine appearance. Scott \$1,250. Estimate \$250 - 350

1894-1898 First Bureau Issue



- 325 ★ 1894, 2¢ Washington, type I, pink, unwatermarked (Scott 248, 250), the pink is disturbed o.g. and the carmine is n.h., Fine to Very Fine. Scott \$133. Estimate \$50 - 75



- 326 ★★ 1894, 2¢ Washington, type I, pink, unwatermarked (Scott 248), o.g., never hinged, Fine. Scott \$100. Estimate \$40 - 60



- 327 ★★ 1894, 2¢ Washington, type II, carmine, unwatermarked (Scott 251), part imprint single, o.g., never hinged, Very Good; with 2006 P.S.E. certificate. Scott \$1,250. Estimate \$200 - 300



- 328 (★) 1894, 15¢ Clay, dark blue, unwatermarked (Scott 259), outstandingly well centered, regummed, Very Fine to Extremely Fine; with 2025 P.F. certificate graded **VF-XF 85**. Scott \$275 as o.g. Estimate \$40 - 60



- 329 ★ 1894, \$2 Madison, bright blue, unwatermarked (Scott 262), part imprint single, large part o.g. (glazed), hinge remnant, Very Good to Fine. Scott \$2,750. Estimate \$300 - 400



- 330 ★ 1895, 3¢ Jackson, purple, D.L. watermark (Scott 268), plate number single, o.g., barest trace of hinge, Extremely Fine. Scott \$38. Estimate \$50 - 75



- 331 ★★ 1895, 3¢ Jackson, purple, D.L. watermark (Scott 268), plate number single, o.g., never hinged, Fine; with 1996 P.F. certificate for block of 8, this being the top left stamp. Scott \$115. Estimate \$40 - 60



- 332 ★★ 1895, 8¢ Sherman, violet brown, D.L. watermark (Scott 272), o.g., never hinged, centered Very Fine; with 2023 P.F. certificate noting "perfs scissor trimmed at top" and graded F-VF 75 (downgrading because of the perceived flaw). Scott \$210. Estimate \$60 - 80



- 333 ○ 1895, 15¢ Clay, 50¢ Jefferson and \$1 Perry, type I, D.L. watermark (Scott 274-276), a lovely group of 3 stamps, neat cancels, Fine to Very Fine. Scott \$158. Estimate \$50 - 75



- 334 ○ 1895, 15¢ Clay, dark blue, D.L. watermark (Scott 274), Very Fine to Extremely Fine; with 2025 P.F. certificate graded **VF-XF 85**. SMQ \$50. Estimate \$35 - 50



- 335 (★) 1895, \$1 Perry, black, type I, D.L. watermark (Scott 276), unused without gum, Fine. Scott \$250. Estimate \$75 - 100



- 336 ○ 1895, \$2 Madison, bright blue, D.L. watermark (Scott 277), Fine. Scott \$400. Estimate \$100 - 150



- 337 ○ 1895, \$5 Marshall, dark green, D.L. watermark (Scott 278), Fine. Scott \$600. Estimate \$120 - 180



- 338 ★★ 1898, 4¢ Lincoln, orange brown (Scott 280b), o.g., never hinged, Extremely Fine; with 2020 P.S.E. certificate graded **XF 90**. Scott \$80. SMQ \$250. Estimate \$180 - 240



- 339 ★ 1898, 10¢ Webster, type I, brown (Scott 282C), o.g., very lightly hinged, Fine to Very Fine. Scott \$175. Estimate \$60 - 80

1898 Trans-Mississippi Issue



- 340 ★★ 1898, 4¢ Trans-Miss. (Scott 287), o.g., never hinged, Fine; with 2018 P.S.A.G. certificate. Scott \$330. Estimate \$75 - 100



- 341 ○a 1898, 4¢ Trans-Miss. (Scott 287), block of 4 with plate number, excellent color, o.g., never hinged, Fine to Very Fine; with 2023 P.S.E. certificate. Scott \$1,300. Estimate \$350 - 500



- 342 ○ 1898, 5¢ Trans-Miss. (Scott 288), unusually well centered, duplex cancel; a light paper wrinkle, still Very Fine to Extremely Fine; with 2025 P.F. certificate graded **VF-XF 85**. SMQ \$50. Estimate \$35 - 50



- 343 ★ 1898, 8¢ Trans-Miss. (Scott 289),
o.g., lightly hinged, Fine to Very Fine. Scott \$140.
Estimate \$60 - 80



- 344 ★ 1898, 8¢ Trans-Miss. (Scott 289),
well centered, o.g., lightly hinged; reperforated at
right, Very Fine appearance; with 2025 P.F. certi-
ficate. Scott \$140. Estimate \$50 - 75



- 345 ★★ 1898, 10¢ Trans-Miss. (Scott 290),
o.g., never hinged, Fine. Scott \$400.
Estimate \$80 - 120



- 346 ★ 1898, 10¢ Trans-Miss. (Scott 290),
o.g., lightly hinged (light gum bend), Very Fine.
Scott \$140. Estimate \$75 - 100



- 347 ★ 1898, 10¢ Trans-Miss. (Scott 290),
o.g., lightly hinged, Fine. Scott \$140.
Estimate \$40 - 60



- 348 (★) 1898, 50¢ Trans-Miss. (Scott 291),
regummed, Fine; with 2019 P.S.E. certificate,
which notes a "short perf at bottom left". Scott \$600
for o.g. Estimate \$50 - 75



- 349 ○ 1898, 50¢ Trans-Miss. (Scott 291),
Fine to Very Fine. Scott \$175. Estimate \$60 - 80



- 350 ○ 1898, 50¢ Trans-Miss. (Scott 291),
Fine. Scott \$175. Estimate \$40 - 60



- 351 ○ 1898, 50¢ Trans-Miss. (Scott 291),
Fine. Scott \$175. Estimate \$35 - 50



- 352 ★ 1898, \$1 Trans-Miss. (Scott 292),
glazed o.g., Fine to Very Fine. Scott \$1,200.
Estimate \$250 - 350



- 353 ★ 1898, \$1 Trans-Miss. (Scott 292), glazed o.g., hinge remnant, Fine. Scott \$1,200.
Estimate \$200 - 300



- 358 ○ 1898, \$1 Trans-Miss. (Scott 292), oval cancel, Fine; signed Gebr. Genf. Scott \$675.
Estimate \$120 - 180



- 354 ○ 1898, \$1 Trans-Miss. (Scott 292), wonderfully well centered, with a neat face-free target cancel; small thin, otherwise Extremely Fine. Scott \$675.
Estimate \$300 - 400



- 359 ○ 1898, \$1 Trans-Miss. (Scott 292), New York parcel cancel, Fine; signed Bühler. Scott \$675.
Estimate \$120 - 180



- 355 ○ 1898, \$1 Trans-Miss. (Scott 292), Fine to Very Fine. Scott \$675.
Estimate \$250 - 350



- 360 ○ 1898, \$1 Trans-Miss. (Scott 292), neat light c.d.s., about Fine. Scott \$675.
Estimate \$100 - 150



- 356 ○ 1898, \$1 Trans-Miss. (Scott 292), glazed o.g., Fine. Scott \$675. Estimate \$200 - 300



- 361 ○ 1898, \$2 Trans-Miss. (Scott 293), nicely centered, with a light registry cancel; horizontal crease, Fine to Very Fine appearance; with 2021 P.S.A.G. certificate. Scott \$1,000.
Estimate \$200 - 300



- 357 ○ 1898, \$1 Trans-Miss. (Scott 292), light oval cancel, Fine. Scott \$675.
Estimate \$120 - 180



- 362 ○ 1898, \$2 Trans-Miss. (Scott 293), attractive centering, neat light c.d.s.; small thin, otherwise Fine to Very Fine. Scott \$1,000.
Estimate \$200 - 300

1901-1907 Regular and Commemorative Issues



- 363 ○ 1901, 4¢ Pan-American (Scott 296), a well centered vertical pair, with a neat lightly struck c.d.s., Very Fine to Extremely Fine; with 2025 P.F. certificate graded **VF-XF 85**. Scott \$36. SMQ \$50. Estimate \$40 - 60



- 364 ★★ 1901, 5¢ Pan-American (Scott 297), o.g., never hinged, Fine; with 2018 P.S.E. certificate. Scott \$180. Estimate \$60 - 80



- 365 ★★ 1901, 8¢ Pan-American (Scott 298), o.g., never hinged (light fingerprint on gum), Fine. Scott \$220. Estimate \$60 - 80



- 366 ★ 1903, 1¢ Franklin, blue green (Scott 300), o.g., lightly hinged, Extremely Fine. Scott \$12. Estimate \$30 - 40



- 367 ★★ 1903, 5¢ Lincoln, blue and 6¢ Garfield, claret (Scott 304, 305), well centered, o.g., never hinged, Very Fine; with 2018 P.S.E. certificates. Scott \$130. Estimate \$75 - 100



- 368 ★★ 1902, 8¢ Martha Washington, violet black (Scott 306), o.g., never hinged, Fine to Very Fine. Scott \$110. Estimate \$40 - 60



- 369 ★ 1903, \$1 Farragut, black (Scott 311), o.g., hinged; small thins, otherwise Fine to Very Fine. Scott \$575. Estimate \$150 - 200



- 370 ★ 1903, \$1 Farragut, black (Scott 311), o.g., hinge remnant, Fine. Scott \$575. Estimate \$120 - 180



- 371 ○ 1903, \$1 Farragut, black (Scott 311), beautifully well centered, with a neat double oval cancel; light diagonal crease at top, otherwise Extremely Fine; with 2025 P.F. certificate graded **XF 90**. Scott \$90. Estimate \$60 - 80



- 372 ○ 1903, \$1 Farragut, black (Scott 311), Very Fine. Scott \$90. Estimate \$50 - 75



- 373 ○ 1903, \$1 Farragut, black (Scott 311), neat registry cancel, Fine to Very Fine; with 2025 P.F. certificate graded F-VF 75. Scott \$90. SMQ \$65. Estimate \$40 - 60



- 374 ▲a 1903, \$1 Farragut, black (Scott 311), block of 4, tied on piece by oval cancels, Fine. Scott \$600. Estimate \$120 - 180



- 375 (★) 1903, \$2 Madison, dark blue (Scott 312), stuck down on black backing and counted as unused without gum, Very Good. Scott \$375. Estimate \$60 - 80



- 376 ○ 1903, \$2 Madison, dark blue (Scott 312), horizontal pair, nearly Fine. Scott \$400. Estimate \$60 - 80



- 377 ○ 1903, \$5 Marshall, dark green (Scott 313), Fine. Scott \$750. Estimate \$150 - 200



- 378 ★★a 1906, 1¢ Franklin, blue green, imperf. (Scott 314), block of 4, o.g., never hinged, Very Fine. Scott \$120. Estimate \$50 - 75



- 379 ★★ 1903, 2¢ Washington & Shield, type I, carmine (Scott 319), o.g., never hinged, Very Fine to Extremely Fine; with 2019 P.S.E. certificate graded VF-XF 85. Scott \$15. SMQ \$90. Estimate \$60 - 80



- 380 ★★ 1903, 2¢ Washington & Shield, type I, carmine (Scott 319), plate number single, o.g., never hinged, Fine to Very Fine; with 2025 P.F. certificate graded F-VF 75. Scott \$15. SMQ \$25. Estimate \$20 - 30



- 383 ★★a 1904, 3¢ Louisiana Purchase (Scott 325), block of 4, o.g., never hinged, Fine to Very Fine; with 2019 P.S.E. certificate. Scott \$680. Estimate \$200 - 300



- 381 ★★a 1903, 2¢ Washington & Shield, type I, carmine (Scott 319), plate block of 6, o.g., never hinged, Fine, ex-Brody. Scott \$310. Estimate \$60 - 80



- 384 ★★ 1907, 1¢ Jamestown (Scott 328), o.g., never hinged, Very Fine. Scott \$75. Estimate \$50 - 75



- 382 ★★ 1904, 1¢ Louisiana Purchase (Scott 323), o.g., never hinged, Very Fine to Extremely Fine; with 2019 P.S.E. certificate graded VF-XF 85. Scott \$60. SMQ \$75. Estimate \$50 - 75



- 385 ★★a 1907, 1¢ Jamestown (Scott 328), block of 4 with part imprint, o.g., never hinged, Fine. Scott \$300. Estimate \$50 - 75



- 386 ★★ 1907, 5¢ Jamestown (Scott 330), o.g., never hinged, about Fine. Scott \$375. Estimate \$50 - 75

1908-1911 Washington-Franklin Issues



- 387 ★ 1908, 2¢ Washington, carmine, D.L. watermark (Scott 332), o.g., hinged, Extremely Fine to Superb; with 2007 P.S.E. certificate graded **XF-SUP 95**. SMQ \$35. Estimate \$30 - 40



- 388 ★★ 1909, 5¢ Washington, blue, D.L. watermark, imperf. (Scott 347), plate number single, o.g., never hinged, Extremely Fine; with 2025 P.F. certificate graded **XF 90**. Scott \$45. SMQ \$75. Estimate \$50 - 75



- 389 ★★ 1909, 5¢ Washington, blue, D.L. watermark, imperf. (Scott 347), pair, o.g., never hinged, Fine to Very Fine; with P.S.E. encapsulated certificate graded F-VF 75 - for a Scott 346 which is a mistake! Scott \$95. SMQ \$75. Estimate \$50 - 75



- 390 ○ 1908, 1¢ Franklin, green and 2¢ Washington, carmine, D.L. watermark, vertical coils, perf. 12 horizontally (Scott 348, 349), lightly canceled, Fine to Very Fine. Scott \$220. Estimate \$60 - 80



- 391 ○ 1909, 2¢ Washington, carmine, D.L. watermark, coil, perf. 12 horizontally (Scott 349), very lightly canceled, Fine to Very Fine. Scott \$160. Estimate \$50 - 75



- 392 ○ 1909, 2¢ Washington, carmine, D.L. watermark, horizontal coil, perf. 12 vertically (Scott 353), wavy line cancel, Fine to Very Fine. Scott \$220. Estimate \$75 - 100



- 393 ○ 1909, 4¢ Washington, orange brown, D.L. watermark, coil, perf. 12 vertically (Scott 354), Fine to Very Fine. Scott \$275. Estimate \$75 - 100



- 394 ○ 1909, 5¢ Washington, blue, D.L. watermark, coil, perf. 12 vertically (Scott 355), very lightly canceled, nearly Fine. Scott \$300. Estimate \$40 - 60



- 395 ★ 1909, 2¢ Washington, carmine, on bluish paper (Scott 358), o.g., hinged, Fine; with 2025 P.F. certificate. Scott \$80. Estimate \$30 - 40



- 396 ★★a 1909, 2¢ Washington, carmine, on bluish paper (Scott 358), block of 4, o.g., never hinged, Fine; with 2025 P.F. certificate. Scott \$680. Estimate \$150 - 200



- 397 ○ 1909, 2¢ Washington, carmine, on bluish paper (Scott 358), machine cancel; small thins, Very Fine; with 2025 P.F. certificate. Scott \$150. Estimate \$40 - 60



- 398 ★★a 1909, 2¢ Alaska-Yukon, imperf. (Scott 371), plate block of 6, excellent centering and margins, o.g., never hinged; some mild overall toning, otherwise Very Fine to Extremely Fine; with 2025 P.S.E. certificate graded VF-XF 85. Scott \$350. Estimate \$100 - 150



- 399 ★★ 1911, 4¢ Washington, brown, S.L. watermark (Scott 377), marvelously well centered, o.g., never hinged; a shallow facial scuff in the bottom left corner, otherwise Extremely Fine; with 2009 P.S.E. certificate graded XF 90. Scott \$65. SMQ \$150. Estimate \$50 - 75



- 400 ★★ 1911, 6¢ Washington, red orange, S.L. watermark (Scott 379), excellent centering, o.g., never hinged, Very Fine; with 2022 P.S.E. certificate graded VF 80, which notes a trivial "small perf disc indent at right". Scott \$85. SMQ \$80. Estimate \$50 - 75



- 401 ★★ 1911, 15¢ Washington, pale ultra-marine, S.L. watermark (Scott 382), o.g., never hinged, Fine. Scott \$500. Estimate \$120 - 180



- 402 ★★ 1910, 1¢ Franklin, green, S.L. watermark, vertical coil, perf. 12 horizontally (Scott 385), o.g., never hinged, Very Fine to Extremely Fine. Scott \$100. Estimate \$75 - 100



- 403 ★ 1910, 1¢ Franklin, green, S.L. watermark, vertical coil, perf. 12 horizontally (Scott 385), pair, o.g., bottom stamp lightly hinged and top stamp is never hinged, Very Fine to Extremely Fine; with 2025 P.F. certificate graded **VF-XF 85**. SMQ for singles is \$150 for n.h. and \$55 for hinged. Scott \$150. Estimate \$100 - 150



- 404 ★★ 1910, 1¢ Franklin, green, S.L. watermark, coil, perf. 8½ horizontally (Scott 390), line pair, well centered, o.g., never hinged, Very Fine to Extremely Fine; with 2019 P.S.E. certificate graded **VF-XF 85**. Scott \$73. SMQ \$90. Estimate \$60 - 80



- 405 ★★ 1910, 1¢ Franklin, green, S.L. watermark, coil, perf. 8½ horizontally (Scott 390), a beautifully well centered line pair, o.g., never hinged; the bottom stamp with a very faint vertical crease, otherwise Very Fine to Extremely Fine; with 2019 P.S.E. certificate graded **VF-XF 85**. Scott \$73. SMQ \$90. Estimate \$50 - 75



- 406 ○ 1910, 2¢ Washington, carmine, S.L. watermark, coil, perf. 8½ horizontally (Scott 391), pair, Buffalo NY oval cancel, Fine to Very Fine. Scott \$170. Estimate \$50 - 75



- 407 ★ 1910, 1¢ Franklin, green, S.L. watermark, horizontal coil, perf. 8½ vertically (Scott 392), pair, o.g., lightly hinged, Very Fine; with 2025 P.F. certificate graded **VF 80**. Scott \$75. Estimate \$50 - 75



- 408 ★★ 1910, 2¢ Washington, carmine and 3¢ Washington, deep violet, type I, S.L. watermark, horizontal coils, perf. 8½ vertically (Scott 393, 394), o.g., never hinged, Fine or better. Scott \$240. Estimate \$60 - 80



- 409 ○ 1913, 5¢ Washington, blue, S.L. watermark, horizontal coil (Scott 396), an attractive used pair, Fine to Very Fine. Scott \$190. Estimate \$60 - 80

1913-1915 Panama-Pacific Issue



- 410 ★★ 1913, 1¢ Panama-Pacific, perf. 12 (Scott 397), o.g., never hinged, Extremely Fine; with 2013 P.F. certificate graded **XF 90**. Scott \$35. SMQ \$95. Estimate \$75 - 100



- 411 ○ 1915, 2¢ Panama-Pacific, perf. 10 (Scott 402), Extremely Fine; with 2025 P.F. certificate graded **XF 90**. SMQ \$50. Estimate \$35 - 50

1912-1920 Washington-Franklin Issues



- 412 ★★ 1912, 1¢ Washington, green and 2¢ Washington, carmine, S.L. watermark, perf. 12 (Scott 405, 406), the 2¢ with heavy plate wash, o.g., never hinged, Extremely Fine; with 2006 and 2018 P.S.E. certificates graded **XF 90**. Scott \$15. SMQ \$140. Estimate \$80 - 120



- 413 ★★ 1912, 1¢ Washington, green, S.L. watermark, vertical coil, perf. 12 horizontally (Scott 410), line pair, o.g., never hinged, Extremely Fine; with 2025 P.F. certificate graded **XF 90**. Scott \$65. SMQ \$80. Estimate \$60 - 80



- 414 ○ 1912, 1¢ Washington, green, S.L. watermark, coil, perf. 12 vertically (Scott 412), pair, very lightly canceled, almost Very Fine. Scott \$120. Estimate \$50 - 75



- 415 ○ 1912, 1¢ Washington, green, and 2¢ Washington, carmine, S.L. watermark, horizontal coils, perf. 12 vertically (Scott 412, 413), pairs, Fine. Scott \$220. Estimate \$50 - 75



- 416 ★★ 1912, 8¢ Franklin, pale olive green, S.L. watermark, perf. 12 (Scott 414), o.g., never hinged, Very Fine. Scott \$100. Estimate \$75 - 100



- 417 ★★ 1912, 10¢ Franklin, orange yellow, S.L. watermark, perf. 12 (Scott 416), o.g., never hinged, Fine to Very Fine. Scott \$100. Estimate \$40 - 60



- 418 ○ 1912, \$1 Franklin, violet brown, D.L. watermark, perf. 12 (Scott 423), Chicago double oval town cancel, Fine to Very Fine; with 2025 P.F. certificate graded F-VF 75J (seems undergraded). Scott \$85. SMQ \$65 for plain 75. Estimate \$40 - 60



- 419 ★★ 1914, 1¢ Washington, green and 2¢ Washington, type I, rose red, S.L. watermark, perf. 10 (Scott 424-425), o.g., never hinged; 1¢ has a tiny corner crease at top left, Extremely Fine; with 2019-21 P.S.E. certificates, each graded XF 90. SMQ \$80. Estimate \$50 - 75



- 420 ★★ 1914, 9¢ Franklin, salmon red, S.L. watermark, perf. 10 (Scott 432), excellent centering, o.g., never hinged; a "perf disc indent in left margin and light overall toning", otherwise Very Fine to Extremely Fine; with 2021 P.S.E. certificate graded VF-XF 85. Scott \$80. SMQ \$160. Estimate \$50 - 75



- 421 ★★ 1915, 11¢ Franklin, dark green, S.L. watermark, perf. 10 (Scott 434), o.g., never hinged, Extremely Fine; with 2018 P.S.E. certificate graded XF 90. Scott \$75. SMQ \$125. Estimate \$80 - 120



- 422 ○ 1914, 2¢ Washington, type I, carmine, S.L. watermark, flat plate coil, perf. 10 horizontally (Scott 442), a well centered pair, Very Fine. Scott \$130. Estimate \$75 - 100



- 423 ○ 1915, 2¢ Washington, type I, red, S.L. watermark, rotary press coil, perf. 10 horizontally (Scott 449), machine cancel; small thin at right, Fine to Very Fine; with 2025 P.F. certificate. Scott \$650. Estimate \$200 - 300



- 424 ★ 1916, 2¢ Washington, carmine, type III, S.L. watermark, rotary press coil, perf. 10 horizontally (Scott 450), line pair, o.g., hinged, Fine. Scott \$240. Estimate \$50 - 75



- 425 ★★ 1914, 1¢ Washington, green, S.L. watermark, rotary press coil, perf. 10 vertically (Scott 452), pair, o.g., never hinged, Very Fine to Extremely Fine; with 2023 P.S.E. certificate graded **VF-XF 85**. Scott \$75. SMQ \$70.

Estimate \$50 - 75



- 426 ○ 1914, 2¢ Washington, type I, carmine rose, S.L. watermark, rotary press coil, perf. 10 vertically (Scott 453), pair, Fine. Scott \$140. Estimate \$40 - 60



- 427 ○ 1915, 2¢ Washington, type II, red, S.L. watermark, rotary press coil, perf. 10 vertically (Scott 454), line strip of 7, tied on piece by New York 1915 duplex cancels, Fine to Very Fine. Scott \$763. Estimate \$300 - 400



- 428 ★★ 1915, 2¢ Washington, type I, pale carmine red, S.L. watermark, perf. 11 (Scott 461), o.g., never hinged, Very Fine. Scott \$350. Estimate \$180 - 240



- 429 ★ 1916, 3¢ Washington, type I, violet, unwatermarked, perf. 10 (Scott 464), plate number single, o.g., very lightly hinged; thinned, Extremely Fine appearance; with 2025 P.F. certificate graded **XF 90**. Scott \$65. Estimate \$30 - 40



- 430 ★ 1917, 50¢ and \$1 Franklin, plus \$2 Madison and \$5 Marshall, unwatermarked, perf. 10 (Scott 477-480), a nice group of 4 high values, mostly Very Fine. Scott \$185. Estimate \$75 - 100



- 431 ○ 1916, \$1 Franklin, violet black, unwatermarked, perf. 10 (Scott 478), Very Fine to Extremely Fine; with 2025 P.F. certificate graded **VF-XF 85**. Scott \$28. SMQ \$45. Estimate \$35 - 50



- 432 ★★ 1917, \$5 Marshall, perf. 10 (Scott 480), o.g., never hinged, Fine to Very Fine; with 2025 P.F. certificate graded F-VF 75. Scott \$375. SMQ \$250. Estimate \$180 - 240



- 433 ★★ 1917, \$5 Marshall, perf. 10 (Scott 480), o.g., never hinged, Fine. Scott \$375. Estimate \$100 - 150



- 434 ○a 1917, \$5 Marshall, perf. 10 (Scott 480), block of 4, Fine. Scott \$280. Estimate \$50 - 75



- 435 ★★ 1917, 3¢ Washington, type I, violet, unwatermarked, imperf. (Scott 483), pair, o.g., never hinged, Very Fine to Extremely Fine. Scott \$50. Estimate \$40 - 60



- 436 ○ 1916, 2¢ Washington, carmine, type II, unwatermarked, rotary press coil, perf. 10 vertically (Scott 491), machine cancel; clipped perfs at left, Fine to Very Fine; with 2025 P.F. certificate. Scott \$800. Estimate \$200 - 300



- 437 ○ 1916, 2¢ Washington, carmine, type II, unwatermarked, rotary press coil, perf. 10 vertically (Scott 491), machine cancel; scissor separated perfs at top right and bottom left, Fine; with 2025 P.F. certificate. Scott \$800.
Estimate \$150 - 200



- 438 ○ 1916, 2¢ Washington, carmine, type II, unwatermarked, rotary press coil, perf. 10 vertically (Scott 491), machine cancel, Fine; with 2025 P.F. certificate. Scott \$800.
Estimate \$150 - 200



- 439 ○ 1916, 2¢ Washington, carmine, type II, unwatermarked, rotary press coil, perf. 10 vertically (Scott 491), machine cancel, Fine; with 2025 P.F. certificate. Scott \$800.
Estimate \$100 - 150



- 440 ○ 1916, 2¢ Washington, carmine, type II, unwatermarked, rotary press coil, perf. 10 vertically (Scott 491), machine cancel; small thin spot, otherwise Fine to Very Fine; with 2025 P.F. certificate. Scott \$800. Estimate \$100 - 150



- 441 ★★ 1917, 3¢ Washington, violet, type I, unwatermarked, rotary press coil, perf. 10 vertically (Scott 493), line pair, o.g., never hinged, Fine to Very Fine; with 2019 P.S.E. certificate. Scott \$230.
Estimate \$75 - 100



- 442 ★★ 1917, 3¢ Washington, violet, type I, unwatermarked, rotary press coil, perf. 10 vertically (Scott 493), line pair, o.g., never hinged, Fine or better. Scott \$230.
Estimate \$60 - 80



- 443 ★★ 1917, 4¢ Washington, orange brown, unwatermarked, rotary press coil, perf. 10 vertically (Scott 495), line pair, o.g., never hinged, Fine to Very Fine; with 2019 P.S.E. certificate graded F-VF 75. Scott \$160. SMQ \$110.
Estimate \$60 - 80



- 444 ★★ 1917, 4¢ Washington, brown, perf. 11 (Scott 503), o.g., never hinged, Extremely Fine; with 2020 P.S.E. certificate graded XF 90J. Scott \$19. SMQ \$85.
Estimate \$60 - 80



- 445 ★★ 1917, 4c Washington, brown, perf. 11 (Scott 503), o.g., never hinged; a trivial minor perf indent on reverse at top, Extremely Fine; with 2022 P.S.E. certificate graded **XF 90**. Scott \$19. SMQ \$55. Estimate \$40 - 60



- 446 ★ 1917, 5c Washington, blue, perf. 11 (Scott 504), o.g., very lightly hinged, Superb; with 2021 P.S.E. certificate graded **SUP 98**. Scott \$8. SMQ \$60. Estimate \$40 - 60



- 447 ★★ 1917, 6c Washington, red orange, perf. 11 (Scott 506), o.g., never hinged, Extremely Fine; with 2006 P.S.E. certificate graded **XF 90**. Scott \$25. SMQ \$60. Estimate \$40 - 60



- 448 ★★ 1917, 6c Washington, red orange, perf. 11 (Scott 506), plate number single, o.g., never hinged, Extremely Fine; with 2022 P.S.E. certificate graded **XF 90**. Scott \$25. SMQ \$60. Estimate \$40 - 60



- 449 ★★ 1917, 8c Franklin, olive bister, perf. 11 (Scott 508), o.g., never hinged, Extremely Fine; with 2019 P.S.E. certificate graded **XF 90**. Scott \$25. SMQ \$60. Estimate \$40 - 60



- 450 ★★a 1917, 10c Franklin, orange yellow, perf. 11 (Scott 510), plate block of 6, o.g., never hinged; some mild toning at top and a crease in the bottom right stamp, otherwise Fine to Very Fine; with 2021 P.S.E. certificate. Scott \$325. Estimate \$75 - 100



- 451 ★★ 1917, 11c Franklin, light green, perf. 11 (Scott 511), o.g., never hinged, Extremely Fine; with 2019 P.S.E. certificate graded **XF 90**. Scott \$17. SMQ \$55. Estimate \$40 - 60



- 452 ★★ 1917, 12¢ Franklin, claret brown, perf. 11 (Scott 512), o.g., never hinged, Very Fine; with 2025 P.F. certificate graded **VF 80**. Scott \$20. SMQ \$25. Estimate \$20 - 30



- 453 ★★ 1917, 12¢ Franklin, brown carmine, perf. 11 (Scott 512a), o.g., never hinged, Extremely Fine; with 2021 P.S.E. certificate graded **XF 90**. Scott \$19. SMQ \$55. Estimate \$40 - 60



- 454 ★ 1918, \$5 Franklin, deep green & black (Scott 524), lovely centering and bright fresh color, o.g., hinge remnant and black album adherences on gum, Extremely Fine. Scott \$170. Estimate \$75 - 100



- 455 ★★a 1918, 1¢ Washington, gray green, and 3¢ Washington, type IV, purple, offset printing (Scott 525, 530), plate blocks of 6, a lovely pair of plate blocks, o.g., never hinged, Fine to Very Fine; with 2021 P.S.E. certificates. Scott \$105. Estimate \$40 - 60



- 456 ★★a 1920, 2¢ Washington, carmine, type IV, offset printing (Scott 526), plate block of 20, including several "ghost" plate numbers, o.g., never hinged; some perf separations not affecting the plate number, Fine to Very Fine overall. Scott \$1,255. Estimate \$350 - 500



- 457 ★★a 1918, 2¢ Washington, type Va, carmine, offset printing (Scott 528), block of 6 with plate number (not a plate block), o.g., never hinged, Fine to Very Fine; with 2021 P.S.E. certificate. Scott \$135. Estimate \$50 - 75



- 458 ★★a 1918, 2¢ Washington, type VII, carmine, offset printing (Scott 528B), block of 4, o.g., never hinged, Fine to Very Fine; with 2019 P.S.E. certificate. Scott \$200. Estimate \$60 - 80



- 459 ★★ 1918, 3¢ Washington, purple, type IV, offset printing (Scott 530), a lovely gem with exceptionally choice centering, o.g., never hinged, Very Fine to Extremely Fine; with 2025 P.S.E. certificate conservatively graded **VF-XF 85**. SMQ \$25.
Estimate \$20 - 30



- 460 ★ 1918, 2¢ Washington, type V, carmine, offset printing, imperf. (Scott 533), o.g., lightly hinged, Very Fine. Scott \$120.
Estimate \$75 - 100



- 461 ○ 1918, 2¢ Washington, type VI, offset printing, Schermack type III perfs (Scott 534A), strip of 4, neat Benton Harbor, Mich. duplex cancel, Fine to Very Fine. Scott \$80. Estimate \$40 - 60



- 462 ★★ 1919, 3¢ Victory (Scott 537), plate number strip of 3, well centered, o.g., never hinged, Very Fine. Scott \$60+.
Estimate \$40 - 60



- 463 ★★a 1919, 3¢ Victory, red violet (Scott 537c), block of 4 with plate number, o.g., never hinged, Fine to Very Fine. Scott \$1,700+.
Estimate \$300 - 400



- 464 ★★ 1919, 3¢ Washington, violet, rotary press coil waste, perf. 11 x 10 (Scott 541), o.g., never hinged, Fine. Scott \$100.
Estimate \$40 - 60



- 465 ★★ 1920, 1¢ Washington, green, rotary press coil waste, perf. 10 x 11 (Scott 542), o.g., never hinged, Extremely Fine; with 2023 P.S.E. certificate graded **XF 90**. Scott \$30. SMQ \$80.
Estimate \$60 - 80



- 466 ★★ 1921, 1¢ Washington, green, rotary press coil waste, perf. 10 x 11 (Scott 543), plate number single, o.g., never hinged, Extremely Fine; with 2025 P.S.E. certificate graded **XF 90**. SMQ \$45. Estimate \$40 - 60



- 467 ★★ 1920, \$2 Franklin, carmine & black (Scott 547), o.g., never hinged, Fine to Very Fine. Scott \$275. Estimate \$80 - 120



- 468 ★★ 1920, \$2 Franklin, carmine & black (Scott 547), o.g., never hinged, Fine to Very Fine. Scott \$260. Estimate \$80 - 120



- 469 ★ 1920, 1¢ Pilgrim (Scott 548), o.g., hinged, Extremely Fine to Superb; with 1997 P.S.E. certificate graded **XF-SUP 95**. SMQ \$45. Estimate \$40 - 60



- 470 ★★/★a 1920, 5¢ Pilgrim (Scott 550), plate block of 6, o.g., top left and bottom right stamps are hinged, others never hinged; bottom right stamp is thinned, otherwise Fine to Very Fine. Scott \$435. Estimate \$100 - 150

1922-1923 Regular Issue



- 471 ★★ 1923, 2¢ Washington (Scott 554), o.g., never hinged, Extremely Fine; with 2005 P.S.E. certificate graded **XF 90**. SMQ \$75. Estimate \$50 - 75



- 472 ★★/★a 1923-25, ½¢ to 2¢ and 11¢, a group of 5 plate blocks (Scott 551-554, 563), o.g., all never hinged except the ½¢ is lightly hinged, Fine to Very Fine. Scott \$283. Estimate \$60 - 80



- 473 ★★a 1922, 5¢ Roosevelt (Scott 557), plate block of 6, o.g., never hinged (faint gum creases affecting the top and center stamps), Fine to Very Fine; with 2021 P.S.E. certificate. Scott \$375. Estimate \$100 - 150



- 474 ★★ 1923, 7¢ McKinley (Scott 559), o.g., never hinged, Extremely Fine; with 2019 P.S.E. certificate graded **XF 90**. Scott \$35. SMQ \$65. Estimate \$50 - 75



- 475 ★★ 1923, 8¢ Grant (Scott 560), o.g., never hinged, almost Very Fine. Scott \$80. Estimate \$35 - 50



- 476 ★★ 1922-23, 11¢ Hayes, 12¢ Grover Cleveland and 14¢ American Indian (Scott 563-565), an exceptional trio of stamps, o.g., never hinged, Extremely Fine; with 2008-19 P.S.E. certificates graded **XF 90**. SMQ \$150.

Estimate \$100 - 150



- 477 ★★a 1923, 14¢ American Indian (Scott 565), plate block of 6, o.g., never hinged, Fine to Very Fine. Scott \$120. Estimate \$50 - 75



- 478 ★★ 1922, 15¢ Statue of Liberty (Scott 566), o.g., never hinged, Extremely Fine to Superb. Scott \$35. Estimate \$60 - 80



- 479 ★★ 1923, 20¢ Golden Gate (Scott 567), o.g., never hinged, Extremely Fine; with 2018 P.S.E. certificate graded **XF 90**. Scott \$35. SMQ \$80. Estimate \$60 - 80



- 480 ★★ 1922, 25¢ Niagara Falls (Scott 568), o.g., never hinged, Extremely Fine; with 2019 P.S.E. certificate graded **XF 90**. Scott \$30. SMQ \$85. Estimate \$60 - 80



- 481 ★★a 1923, \$1 Lincoln Memorial (Scott 571), block of 4, o.g., never hinged, Fine to Very Fine. Scott \$300. Estimate \$75 - 100



- 482 ★ 1923, \$2 U.S. Capitol (Scott 572), o.g., very lightly hinged at top left, Very Fine to Extremely Fine. Scott \$50. Estimate \$40 - 60



- 483 ○ 1923, \$2 U.S. Capitol (Scott 572), Very Fine to Extremely Fine; with 2025 P.F. certificate graded **VF-XF 85 J**. Estimate \$30 - 40



- 484 Oa 1923, \$5 America (Scott 573), arrow block of 4, double oval cancel, Fine to Very Fine. Scott \$95+. Estimate \$40 - 60



- 485 ★★ 1923, \$5 America, carmine lake & dark blue (Scott 573a), o.g., never hinged, Extremely Fine; with 2016 P.F. certificate graded **XF 90**. Scott \$375. SMQ \$325. Estimate \$200 - 300

1923-1930 Issues



- 486 ★★ 1923, 1¢ Franklin, rotary press coil waste, perf. 11 x 10 (Scott 578), o.g., never hinged, Fine. Scott \$150. Estimate \$40 - 60



- 487 ★★a 1923, 1¢ Franklin, rotary press coil waste, perf. 11 x 10 (Scott 578), block of 6, o.g., never hinged, Fine. Scott \$900. Estimate \$150 - 200



- 488 ★★ 1923, 2¢ Washington, rotary press coil waste, perf. 11 x 10 (Scott 579), o.g., never hinged, Fine to Very Fine. Scott \$140. Estimate \$60 - 80



- 489 ★★ 1923, 2¢ Washington, rotary press coil waste, perf. 11 x 10 (Scott 579), o.g., never hinged, Fine to Very Fine; with photocopy of 2013 P.S.E. certificate for block. Scott \$140. Estimate \$50 - 75



- 490 ★★ 1923, 2¢ Washington, rotary press coil waste, perf. 11 x 10 (Scott 579), o.g., never hinged, Fine. Scott \$140. Estimate \$50 - 75



- 491 ★★a 1923, 2¢ Washington, rotary press coil waste, perf. 11 x 10 (Scott 579), block of 4, o.g., never hinged; the bottom right stamp with a tiny tear at top right, otherwise Fine to Very Fine; with 2009 P.F. certificate. Scott \$560. Estimate \$120 - 180



- 492 ★a 1923, 2¢ Washington, rotary press coil waste, perf. 11 x 10 (Scott 579), plate block of 4, o.g., lightly hinged (bottom stamps are n.h.), Fine. Scott \$550. Estimate \$120 - 180



- 493 ★ 1923-26, Rotary press definitives, perf. 10, 1¢ to 10¢ complete (Scott 581-591), set of 11, o.g., lightly hinged, Fine to Very Fine. Scott \$177. Estimate \$40 - 60



- 494 ★★ 1925, 1½¢ Harding, rotary press printing, perf. 10 (Scott 582), o.g., never hinged, Extremely Fine; with 2013 P.S.E. certificate graded XF 90. Scott \$13. SMQ \$65. Estimate \$40 - 60



- 495 ★★a 1925, 1½¢ Harding, rotary press printing, perf. 10 (Scott 582), plate block of 4, o.g., never hinged, Fine to Very Fine. Scott \$125. Estimate \$50 - 75



- 496 ★★a 1925, 1½¢ Harding, rotary press printing, perf. 10 (Scott 582), plate block of 4, o.g., never hinged, Fine. Scott \$125. Estimate \$35 - 50



- 497 ★★a 1924, 2¢ Washington, rotary press printing, perf. 10 (Scott 583), plate block of 4, o.g., never hinged, Fine to Very Fine. Scott \$110. Estimate \$50 - 75



- 498 ★★a 1925, 4¢ Martha Washington, rotary press printing, perf. 10 (Scott 585), plate block of 4, o.g., never hinged, Fine. Scott \$425. Estimate \$80 - 120



- 499 ★★ 1926, 9¢ Jefferson, rotary press printing, perf. 10 (Scott 590), o.g., never hinged, Extremely Fine; with 2020 P.S.E. certificate graded **XF 90**. Scott \$13. SMQ \$85. Estimate \$60 - 80



- 500 ★ 1925, 10¢ Monroe, rotary press printing, perf. 10 (Scott 591), well centered within large margins, o.g., minimally hinged (appears never hinged), Extremely Fine. Scott \$40. Estimate \$40 - 60



- 501 ★★ 1923, 1¢ Franklin, rotary press coil, perf. 10 vertically (Scott 597), a well centered pair, o.g., never hinged, Extremely Fine; with 2007 P.S.E. certificate graded **XF 90**, which mentions a "natural paper inclusion" (at left). SMQ \$55. Estimate \$40 - 60



- 502 ★a 1923, 2¢ Harding, rotary press printing (Scott 612), plate block of 6, o.g., hinged, Fine to Very Fine. Scott \$365. Estimate \$50 - 75



- 503 ★★ 1926, 2¢ Sesquicentennial Exposition (Scott 627), o.g., never hinged, Extremely Fine to Superb; with 2025 P.F. certificate graded XF-SUP 95. SMQ \$45. Estimate \$40 - 60



- 504 ★★ 1926, White Plains souvenir sheet of 25 (Scott 630), o.g., never hinged, Fine to Very Fine. Scott \$475. Estimate \$200 - 300



- 505 ★ 1926, White Plains souvenir sheet of 25 (Scott 630), o.g., lightly hinged on one stamp; overall toning, Fine to Very Fine centering. Scott \$260. Estimate \$75 - 100



- 506 ★ 1926, White Plains souvenir sheet of 25 (Scott 630), o.g., hinge remnant; perf seps in top and bottom selvage (into the stamps at top), Fine. Scott \$260. Estimate \$75 - 100



- 507 ★★a 1926, 2¢ Washington, type I, rotary press printing, with a dramatic perf shift (Scott 634 var.), block of 12, o.g., never hinged. Estimate \$75 - 100



- 508 ★ 1928, 2¢ Hawaii, vertical pair with widely spaced overprint (Scott 647 var.), o.g., top stamp is n.h., bottom stamp is hinged and thinned, Extremely Fine centering. Scott \$125. Estimate \$50 - 75



- 509 ★★ 1928, 5¢ Civil Aeronautics (Scott 650), o.g., never hinged, Extremely Fine to Superb; with 2025 P.F. certificate graded **XF-SUP 95**. SMQ \$50. Estimate \$40 - 60



- 510 ★ 1928, 5¢ Civil Aeronautics (Scott 650), o.g., hinged, Extremely Fine to Superb; with 2025 P.F. certificate graded **XF-SUP 95**. SMQ \$25. Estimate \$20 - 30



- 511 ★★ 1929, 2¢ George Rogers Clark (Scott 651), o.g., never hinged, Extremely Fine; with 2025 P.F. certificate graded **XF 90**. SMQ \$35. Estimate \$25 - 35



- 512 ★ 1929, Kans., 1¢ to 10¢ complete (Scott 658-668), set of 11, o.g., hinged, Fine to Very Fine. Scott \$216. Estimate \$50 - 75



- 515 ★ 1929, Nebr., 1¢ to 10¢ complete (Scott 669-679), set of 11, o.g., hinged, Fine. Scott \$260. Estimate \$50 - 75



- 513 ★★ 1929, 9¢ Kans. (Scott 667), o.g., never hinged, Extremely Fine; with 2008 P.S.E. certificate graded XF 90. Scott \$28. SMQ \$60. Estimate \$40 - 60



- 514 ★★ 1929, 10¢ Kans. (Scott 668), o.g., never hinged (slightly toned gum), Extremely Fine to Superb; with 2008 P.S.E. certificate graded XF-SUP 95. Scott \$45. SMQ \$325. Estimate \$150 - 200



- 516 ★★a 1929, 1¢ Nebr. (Scott 669), block of 15, o.g., never hinged, Fine to Very Fine. Scott \$98.
Estimate \$40 - 60



- 517 ★★ 1929, 3¢ Nebr. (Scott 672), o.g., never hinged, Extremely Fine; with 2021 P.S.E. certificate graded **XF 90**. SMQ \$50.
Estimate \$40 - 60



- 518 ★★ 1929, 4¢ Nebr. (Scott 673), o.g., never hinged, Extremely Fine; with 2018 P.S.E. certificate graded **XF 90**. SMQ \$65.
Estimate \$40 - 60



- 519 ★★ 1929, 9¢ Nebr. (Scott 678), o.g., never hinged, Extremely Fine; with 2020 P.S.E. certificate graded **XF 90**. SMQ \$100.
Estimate \$75 - 100



- 520 ★★ 1930, 1½¢ Harding, rotary press printing (Scott 684), plate number single, o.g., never hinged, Extremely Fine to Superb; with 2025 P.S.E. certificate graded **XF-SUP 95**. SMQ \$55.
Estimate \$40 - 60

1931-1950 Issues



- 521 (★) 1931, 25¢ Niagara Falls, rotary press printing (Scott 699), regummed, Superb; with 2016 P.S.E. certificate graded **SUP 98 J**. Estimate \$40 - 60



- 522 ★★ 1931, 50¢ Arlington Amphitheater, rotary press printing (Scott 701), a perfectly centered gem, the quality is stunning, o.g., never hinged, Superb. Scott \$50. Estimate \$75 - 100



- 523 ★★a 1932, Washington Bicentennial complete (Scott 704-715), set of 12, plate blocks of 4, o.g., never hinged, Fine to Very Fine. Scott \$392. Estimate \$80 - 120



- 524 ★★/★a 1932, Washington Bicentennial complete (Scott 704-715), set of 12, plate blocks of 4, o.g., 3¢-8¢ are never hinged, Fine to Very Fine. Scott \$315. Estimate \$60 - 80



- 525 ★★ 1932, 6¢ Garfield, rotary press printing, horizontal coil (Scott 723), line pair, o.g., never hinged, Very Fine; with 2019 P.S.E. certificate. Scott \$83. Estimate \$50 - 75



- 526 ★★ 1932, 6¢ Garfield, rotary press printing, horizontal coil (Scott 723), line strip of 4, well centered throughout, o.g., never hinged, Extremely Fine; with 2022 P.S.E. certificate. Scott \$113. Estimate \$50 - 75



- 527 ★/○ 1933, a group of Farley souvenir sheets (Scott 730-731, 767, 769), includes #730 (x5), #731 (x3), #730 used, #731 used plus #767 pane of 25 and #769 block of twelve, without gum as issued, Extremely Fine. Scott \$268. Estimate \$60 - 80



- 528 ★★ 1933, 5¢ Kosciuszko (Scott 734), o.g., never hinged, Extremely Fine; with 2025 P.F. certificate graded **XF 90**. SMQ \$25. Estimate \$20 - 30



- 529 ★★ 1938, Presidential Issue, 1/2¢ to \$5 complete (Scott 803-834, 839-851), set of 45 including coil singles, o.g., never hinged, Very Fine. Scott \$165. Estimate \$75 - 100



- 530 ★★a 1938, Presidential Issue, \$1 Wilson (Scott 832), plate block of 8, o.g., never hinged (gum skips affecting two stamps), Very Fine. Scott \$61. Estimate \$20 - 30



- 531 ★★ 1954, Presidential Issue, \$1 Wilson, bright magenta & black (Scott 832g), plate number pair, o.g., never hinged, Very Fine. Scott \$140. Estimate \$60 - 80



- 532 ★★a 1954, Presidential Issue, \$1 Wilson, bright magenta & black (Scott 832g), plate block of 4, o.g., never hinged, Fine. Scott \$400. Estimate \$100 - 150



- 533 ★★ 1938, Presidential Issue, \$2 Harding and \$5 Coolidge (Scott 833, 834), o.g., never hinged, Fine to Very Fine. Scott \$91. Estimate \$30 - 40



- 534 ★★ 1939, Presidential Issue, 1½¢ Martha Washington, horizontal coil, perf. 10 vertically (Scott 840), o.g., never hinged, Extremely Fine to Superb; with 2023 P.S.E. certificate graded **XF-SUP 95**. SMQ \$35. Estimate \$25 - 35



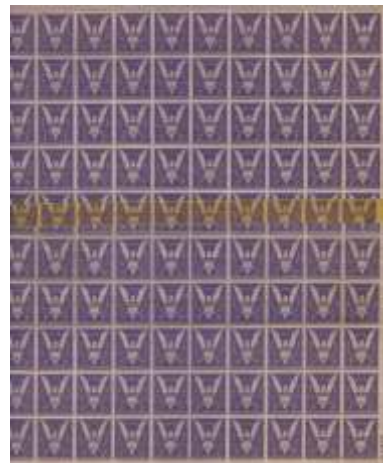
- 535 ★★a 1940-43, Famous Americans and Overrun Countries complete (Scott 859-893, 909-921), blocks of 4, includes Famous Americans in both blocks and plate number blocks of four; as well as the Overrun Countries name blocks of 4 complete, o.g., never hinged; some damage (thinning) to Sc. #864 and 865 plate blocks, otherwise Very Fine. Scott \$422. Estimate \$75 - 100



- 536 ★★ 1940, 3¢ Wyoming Statehood (Scott 897), o.g., never hinged, Superb; with 2025 P.F. certificate graded **SUP 98**. SMQ \$50. Estimate \$35 - 50



- 537 ★★ 1940, 1¢ Defense (Scott 899), o.g., never hinged, Extremely Fine to Superb; with 2023 P.S.E. certificate graded **XF-SUP 95**. SMQ \$50. Estimate \$40 - 60



- 538 ★★ 1942, 3¢ Win the War, a full pane of 50 with Post Office splicing on 2 rows (Scott 905), most unusual, o.g., never hinged, Fine to Very Fine. Estimate \$100 - 150



- 539 ★★ 1944, 3¢ Motion Pictures (Scott 926), o.g., never hinged, Superb; with 2024 P.F. certificate graded **SUP 98**. SMQ \$95. Estimate \$60 - 80



- 540 ★★ 1945, 3¢ Florida Statehood (Scott 927), o.g., never hinged, Superb; with 2024 P.F. certificate graded **SUP 98**. SMQ \$120. Estimate \$75 - 100



- 541 ★★ 1947, 3¢ Postage Stamp Centenary (Scott 947), o.g., never hinged, Superb; with 2023 P.S.E. certificate graded **SUP 98**. SMQ \$60.
Estimate \$40 - 60



- 542 ★★ 1947, 3¢ Doctors (Scott 949), o.g., never hinged, Superb; with 2023 P.S.E. certificate graded **SUP 98**. SMQ \$55. Estimate \$40 - 60



- 543 ★★ 1948, 3¢ U.S.-Canada Friendship (Scott 961), o.g., never hinged, Superb; with 2025 P.F. certificate graded **SUP 98**. SMQ \$65.
Estimate \$40 - 60



- 544 ★★ 1948, 3¢ Palomar Observatory (Scott 966), o.g., never hinged, Superb; with 2024 P.F. certificate graded **SUP 98**. SMQ \$60.
Estimate \$40 - 60



- 545 ★★ 1948, 3¢ Gold Star Mothers (Scott 969), o.g., never hinged, Superb; with 2025 P.S.A.G. certificate graded **SUP 98**. SMQ \$100.
Estimate \$75 - 100



- 546 ★★ 1949, 3¢ Washington and Lee University (Scott 982), o.g., never hinged, Superb; with 2023 P.S.E. certificate graded **SUP 98**. SMQ \$55.
Estimate \$40 - 60



- 547 ★★ 1950, 3¢ Samuel Gompers (Scott 988), o.g., never hinged, Superb; with 2023 P.S.E. certificate graded **SUP 98**. SMQ \$60.
Estimate \$40 - 60

1951-2013 Issues



- 548 ★★ 1951, 3¢ United Confederate Veterans (Scott 998), o.g., never hinged, Superb; with 2024 P.S.A.G. certificate graded **SUP 98**. SMQ \$95. Estimate \$75 - 100



- 549 ★★ 1951, 3¢ United Confederate Veterans (Scott 998), o.g., never hinged, Extremely Fine to Superb; with 2021 P.S.E. certificate graded **XF-SUP 95**. SMQ \$45. Estimate \$40 - 60



- 550 ★★ 1951, 3¢ Nevada Centennial (Scott 999), o.g., never hinged, Extremely Fine to Superb; with 2023 P.S.E. certificate graded **XF-SUP 95**. SMQ \$55. Estimate \$40 - 60



- 551 ★★ 1952, 3¢ B. & O. Railroad (Scott 1006), o.g., never hinged, Extremely Fine to Superb; with 2023 P.S.E. certificate graded **XF-SUP 95**. SMQ \$50. Estimate \$40 - 60



- 552 ★★ 1952, 3¢ Red Cross (Scott 1016), o.g., never hinged, Superb; with 2017 P.S.E. certificate graded **GEM 100**. SMQ \$150. Estimate \$100 - 150



- 553 ★★ 1952, 3¢ Red Cross (Scott 1016), o.g., never hinged, Superb; with 2021 P.S.E. certificate graded **SUP 98**. SMQ \$40. Estimate \$35 - 50



- 554 ★★ 1953, 3¢ Ohio Statehood (Scott 1018), o.g., never hinged, Superb; with 2024 P.F. certificate graded **SUP 98**. SMQ \$110. Estimate \$75 - 100



- 555 ★★ 1953, 3¢ American Bar Association (Scott 1022), o.g., never hinged, Superb; with 2025 P.F. certificate graded **SUP 98**. SMQ \$60. Estimate \$40 - 60



- 556 ★★ 1956, 3¢ Devils Tower (Scott 1084), o.g., never hinged, Superb; with 2025 P.F. certificate graded **SUP 98**. SMQ \$65.
Estimate \$40 - 60



- 559 ★★ 1960, 4¢ Employ the Handicapped (Scott 1155), o.g., never hinged, Superb; with 2024 P.F. certificate graded **SUP 98**. SMQ \$70.
Estimate \$50 - 75



- 557 ★★ 1957, 3¢ Lafayette (Scott 1097), o.g., never hinged, Superb; with 2025 P.F. certificate graded **SUP 98**. SMQ \$60. Estimate \$40 - 60



- 560 ★★ 1960, 4¢ Echo I (Scott 1173), o.g., never hinged, Superb; with 2025 P.F. certificate graded **SUP 98**. SMQ \$65. Estimate \$40 - 60



- 558 ★★ 1957, 3¢ Wildlife Conservation: Whooping Cranes (Scott 1098), o.g., never hinged, Superb; with 2025 P.F. certificate graded **SUP 98**. SMQ \$70. Estimate \$50 - 75



- 561 ★★ 1964, 5¢ Sam Houston (Scott 1242), o.g., never hinged, Superb; with 2014 P.S.E. certificate graded **SUP 98**. SMQ \$80.
Estimate \$60 - 80



- 562 ★★a 1973, \$5 Moore, tagged (Scott 1295a), plate block of 4, o.g., never hinged, Extremely Fine to Superb; with 2025 P.S.E. certificate graded **XF-SUP 95**. Scott \$35. Estimate \$50 - 75



- 563 ★★ 1966, 5¢ Washington, redrawn, horizontal coil, imperf. pair (Scott 1304Cd), pair, o.g., never hinged, Very Fine to Extremely Fine; with 2019 P.S.E. certificate graded **VF-XF 85**. Scott \$375. Estimate \$200 - 300



- 564 ★ 1968, 6¢ Disney, ocher omitted (Scott 1355a), slightly disturbed o.g., Very Fine. Scott \$350 for n.h. Estimate \$75 - 100



- 565 ★★a 1989, \$2.40 Moon Landing (Scott 2419), panes of 20, two panes, one with plate number 11111 and one with 11114, o.g., never hinged, Very Fine. Scott \$200. Estimate \$60 - 80



- 566 ○ 1989-2007, a group of 19 modern used high grade stamps (Scott 2434//4178), including Sc. #2434 (Gem 100), #2468 (Gem 100), #2543, #2592, #2624b, #2630, #3000R, #3036, #3188 (Gem 100), #3227, #3235r, #3372, #3445, #3523, #3647, #3773, #3934, and #4178; all are Superb 98 unless otherwise noted! various cancels, Superb; all with 2023 P.F. certificates graded **Superb 98 or Gem 100**. Estimate \$200 - 300



- 567 ★★a 1990, \$2 Bobcat, *black (engraved) omitted* (Scott 2482a), block of 4, o.g., never hinged, almost Very Fine. Scott \$800 as 4 singles. Estimate \$300 - 400



- 568 ★★a 1990, \$2 Bobcat, *black (engraved) omitted* (Scott 2482a), plate block of 4, o.g., never hinged, almost Very Fine. Scott \$800 as 4 singles. Estimate \$300 - 400



- 569 ★★ 1994, Legends of the West, recalled, miniature sheet of 20 (Scott 2870), with the original post office sleeve, o.g., never hinged, Very Fine to Extremely Fine. Scott \$125. Estimate \$60 - 80



- 570 ★a 1997, 32¢ Sylvester & Tweety, self-adhesive, pane of 10 (Scott 3205, 3307, 3535), die cutting extends through the backing paper, includes 4 of these plus 1997, 32¢ Daffy Duck, self-adhesive, pane of 10 (x8); 2001, 34¢ "That's All Folks!", self-adhesive, pane of 10 (x1), Extremely Fine. Scott \$198. Estimate \$60 - 80



- 571 ★★a 1998, \$3.20 Space Shuttle Landing (Scott 3261), pane of 20, with plate # B11111, o.g., never hinged, Very Fine to Extremely Fine. Scott \$120. Face Value \$64. Estimate \$40 - 60



- 572 ★★ 2013, Inverted Jenny, miniature sheet of 6 (Scott 4806), o.g., never hinged, Superb; with 2013 P.S.E. certificate graded SUP 98, which notes a trivial "small unprinted spot at top left". SMQ \$125. Estimate \$80 - 120

Airmail



- 573 ★ **Airmail, 1918-23, First and Second Issues complete (Scott C1-C6), set of 6, o.g., hinged, Fine to Very Fine. Scott \$323.**
Estimate \$60 - 80



- 574 ★★ **Airmail, 1918, 6¢ Jenny (Scott C1), o.g., never hinged, Fine to Very Fine. Scott \$110.**
Estimate \$35 - 50



- 575 ★★a **Airmail, 1918, 6¢ Jenny (Scott C1), centerline block of 4, attractive centering, o.g., never hinged; the bottom left stamp with a tiny natural paper inclusion, Fine to Very Fine; with 2019 P.S.E. certificate. Scott \$440.**
Estimate \$150 - 200



- 576 ★★ **Airmail, 1918, 16¢ Jenny (Scott C2), o.g., never hinged, Extremely Fine; with 2020 P.S.E. certificate graded XF 90. Scott \$120. SMQ \$160.**
Estimate \$100 - 150



- 577 ★★ **Airmail, 1918, 16¢ Jenny (Scott C2), nicely centered, o.g., never hinged, Very Fine. Scott \$120.**
Estimate \$50 - 75



- 578 ★★ **Airmail, 1918, 24¢ Jenny, plus 1923, 8¢ Propeller; and 1923, 24¢ Biplane (Scott C3, C4, C6), a group of 3, o.g., never hinged, Fine to Very Fine. Scott \$295.**
Estimate \$75 - 100



- 579 ★★a **Airmail, 1918, 24¢ Jenny (Scott C3), plate block of 12, o.g., never hinged; a tear in the lower right stamp, otherwise Fine to Very Fine; with clear 2018 P.S.E. certificate. Scott \$2,000.**
Estimate \$400 - 600



- 580 ★★ **Airmail, 1923, 8¢ Propeller (Scott C4), o.g., never hinged, Extremely Fine; with 2019 P.S.E. certificate graded XF 90. Scott \$35. SMQ \$75.**
Estimate \$50 - 75



- 581 ★★a Airmail, 1923, 8¢ Propeller (Scott C4), block of 4, o.g., never hinged, Very Fine. Scott \$140. Estimate \$60 - 80



- 582 ★★a Airmail, 1923, 8¢ Propeller (Scott C4), block of 4, o.g., never hinged, Fine to Very Fine. Scott \$140. Estimate \$50 - 75



- 583 ★★ Airmail, 1923, 16¢ Winged Emblem (Scott C5), o.g., never hinged, Fine to Very Fine; with P.S.E. encapsulated certificate graded F-VF 75. Scott \$120. Estimate \$50 - 75



- 584 ★★ Airmail, 1923, 16¢ Winged Emblem (Scott C5), o.g., never hinged, Very Fine. Scott \$120. Estimate \$50 - 75



- 585 ★★ Airmail, 1923, 24¢ Biplane (Scott C6), o.g., never hinged, Very Fine; with 2018 P.S.E. certificate graded VF 80. Scott \$130. SMQ \$140. Estimate \$80 - 120



- 586 ★★a Airmail, 1923, 24¢ Biplane (Scott C6), block of 12, o.g., never hinged, Fine to Very Fine; with 2018 P.S.E. certificate. Scott \$1,560. Estimate \$400 - 600



- 587 ★★a Airmail, 1926-27, Map & Planes complete (Scott C7-C9), set of 3, plate blocks of 6, o.g., never hinged, Fine to Very Fine. Scott \$185. Estimate \$60 - 80



- 588 ★★ Airmail, 1926, 10¢ Map & Planes (Scott C7), o.g., never hinged, Extremely Fine; with 2025 P.F. certificate graded **XF 90**. SMQ \$35. Estimate \$25 - 35



- 589 ★★ Airmail, 1926, 10¢ Map & Planes (Scott C7), plate number single, o.g., never hinged, Very Fine to Extremely Fine; with 2025 P.F. certificate graded **VF-XF 85 J**. SMQ \$25. Estimate \$20 - 30



- 590 ○ Airmail, 1926, 10¢ Map & Planes (Scott C7), o.g., never hinged, Extremely Fine to Superb; with 2010 P.S.E. certificate graded **XF-SUP 95**. SMQ \$100. Estimate \$75 - 100



- 591 ★★a Airmail, 1926-38, a group of 7 blocks of four (Scott C7//C23), including C7, C8, C9, C10, C11, C18 (some d.o.g.), C23 (centerline block); all imaged here, o.g., never hinged, Fine to Very Fine. Scott \$380. Estimate \$75 - 100



- 592 ★★ Airmail, 1927, 10¢ Lindbergh (Scott C10), o.g., never hinged, Extremely Fine; with 2025 P.F. certificate graded **XF 90**. SMQ \$45. Estimate \$35 - 50



- 593 ★★a Airmail, 1927, 10¢ Lindbergh (Scott C10), plate block of 6, o.g., never hinged, Fine to Very Fine overall, the bottom row is Extremely Fine. Scott \$130. Estimate \$60 - 80



- 594 ★★ Airmail, 1928, 10¢ Lindbergh, booklet pane of 3 (Scott C10a), o.g., never hinged, Fine to Very Fine. Scott \$115. Estimate \$40 - 60



- 595 ★ Airmail, 1930, Graf Zeppelin complete (Scott C13-C15), set of 3, o.g., each with hinge remnant; 65¢ and \$2.60 with small faults, otherwise Fine to Very Fine. Scott \$1,080. Estimate \$400 - 600



- 596 ○ Airmail, 1930, 65¢ Graf Zeppelin (Scott C13), Very Fine. Scott \$160. Estimate \$100 - 150



- 597 ★ Airmail, 1930, \$2.60 Graf Zeppelin (Scott C15), beautifully well centered, o.g., hinged; a light diagonal crease at left, otherwise Extremely Fine. Scott \$525. Estimate \$100 - 150



- 598 ○ Airmail, 1930, \$2.60 Graf Zeppelin (Scott C15), machine cancel, Fine. Scott \$550. Estimate \$120 - 180



- 599 ○ **Airmail, 1932, 8¢ Winged Globe (Scott C17)**, wavy line cancel, Extremely Fine to Superb; with 2009 P.S.E. certificate graded **XF-SUP 95**. SMQ \$75. Estimate \$50 - 75



- 600 ★★ **Airmail, 1933, 50¢ "Chicago" Zeppelin (Scott C18)**, o.g., never hinged, Very Fine; with 2018 P.S.E. certificate graded **VF 80**. Scott \$75. SMQ \$80. Estimate \$60 - 80



- 601 ★★ **Airmail, 1933, 50¢ "Chicago" Zeppelin (Scott C18)**, o.g., never hinged, Very Fine. Scott \$75. Estimate \$40 - 60



- 602 ★★ **Airmail, 1934, 6¢ Winged Globe (Scott C19)**, o.g., never hinged, Extremely Fine; with 2020 P.S.E. certificate graded **XF 90**. SMQ \$80. Estimate \$60 - 80



- 603 ★★a **Airmail, 1937, 20¢ and 50¢ China Clipper (Scott C21-C22)**, plate blocks of 6, o.g., never hinged, Fine to Very Fine. Scott \$170. Estimate \$60 - 80



- 604 ★★ **Airmail, 1946, 5¢ DC-4 Skymaster (Scott C32)**, o.g., never hinged, Superb; with 2013 P.S.E. certificate graded **SUP 98**. SMQ \$125. Estimate \$80 - 120



- 605 ★★ **Airmail, 1952, 80¢ Hawaii (Scott C46)**, o.g., never hinged, Superb; with 2011 P.S.E. certificate graded **SUP 98**. SMQ \$100. Estimate \$75 - 100



- 606 ★★ Airmail, 1959, 7¢ Hawaii Statehood (Scott C55), o.g., never hinged, Superb; with 2014 P.S.E. certificate graded **SUP 98**. SMQ \$65.
Estimate \$40 - 60



- 607 ★★ Airmail, 1962, 8¢ Jet & Capitol coil, tagged (Scott C65a), pair, o.g., never hinged, Superb; with 2009 P.S.E. certificate graded **SUP 98**. SMQ \$135. Estimate \$80 - 120



- 608 ★★ Airmail, 1967, 20¢ Audubon (Scott C71), plate number single, o.g., never hinged, Superb; with 2015 P.S.E. certificate graded **SUP 98**. SMQ \$60. Estimate \$40 - 60



- 609 ★★ Airmail, 1969, 10¢ Moon Landing (Scott C76), o.g., never hinged, Superb; with 2011 P.S.E. certificate graded **SUP 98**. SMQ \$75.
Estimate \$50 - 75



- 610 ★★a Airmail, 1973, 13¢ Winged Envelope, untagged (Bureau precanceled) (Scott C79b), complete sheet of 100, o.g., never hinged, Very Fine. Scott \$108. Estimate \$50 - 75



- 611 ★★ Airmail, 1971, 11¢ Jet coil, imperf. pair, major miscut (Scott C82a), o.g., never hinged, Very Fine; with 2019 P.S.E. certificate, *less than 200 pairs issued*. Scott \$160 as normal. Estimate \$75 - 100



- 612 ★★a **Airmail, 1979, 21¢ Chanute and 25¢ Wiley Post (Scott C93-94, C95-96)**, complete sheets of 100, total face value is \$42, o.g., never hinged, Extremely Fine. Scott \$162.

Estimate \$50 - 75



- 613 ★★a **Airmail, 1983, 40¢ Olympics (Scott C105-C108)**, plate no. 2222; total face is \$80, o.g., never hinged, Extremely Fine. Scott \$201.

Estimate \$60 - 80



- 614 ★★a **Airmail, 1991, 50¢ Harriet Quimby, perf. 11.2 (Scott C128b)**, complete sheet of 50, face value is \$25, o.g., never hinged. Scott \$64.

Estimate \$40 - 60



- 615 ★★ **Airmail, 2006, 63¢ Bryce Canyon (Scott C139)**, o.g., never hinged, Superb; with 2021 P.S.E. certificate graded **SUP 98**. SMQ \$85.

Estimate \$60 - 80



- 616 ★★a **Airmail Special Delivery, 1934 and 1936 issues, plus Certified Mail (Scott CE1-CE2, FA1)**, complete sheets of 50, the CE2 is with the Type 4 marginal markings, o.g., never hinged, Very Fine. Scott \$190.

Estimate \$50 - 75

Special Delivery and Registry



- 617 ★ **Special Delivery, 1885, 10¢ blue (Scott E1)**, o.g., lightly hinged; diagonal crease, otherwise Fine to Very Fine. Scott \$600.

Estimate \$100 - 150



- 618 ★ **Special Delivery, 1893, 10c orange (Scott E3)**, o.g., hinged, Fine to Very Fine. Scott \$300. Estimate \$100 - 150



- 619 (★) **Special Delivery, 1893, 10c orange (Scott E3)**, vibrant color and gorgeous centering, unused without gum, Very Fine to Extremely Fine. Scott \$300 for o.g. Estimate \$75 - 100



- 620 ★ **Special Delivery, 1893, 10c orange (Scott E3)**, well centered, o.g., hinged; a couple stray ink specks, otherwise Very Fine. Scott \$300. Estimate \$75 - 100



- 621 ★ **Special Delivery, 1893, 10c orange (Scott E3)**, o.g., hinged, about Fine. Scott \$300. Estimate \$50 - 75



- 622 ○ **Special Delivery, 1894, 10c blue, unwatermarked (Scott E4)**, Fine to Very Fine. Scott \$110. Estimate \$40 - 60



- 623 ★★ **Special Delivery, 1908, 10c green (Scott E7)**, o.g., never hinged, Fine to Very Fine. Scott \$140. Estimate \$60 - 80



- 624 ★ **Special Delivery, 1914, 10c ultramarine (Scott E9)**, well centered, o.g., hinged; a couple nibbed perfs, otherwise Very Fine. Scott \$190. Estimate \$60 - 80



- 625 ★★ **Registry, 1911, 10c ultramarine (Scott F1)**, o.g., never hinged, Fine. Scott \$160. Estimate \$40 - 60



- 626 ★ **Registry, 1911, 10c ultramarine (Scott F1)**, o.g., hinged, Fine to Very Fine. Scott \$75. Estimate \$30 - 40

Postage Due



- 627 (★) **Postage Due, 1879, 3¢ brown (Scott J3)**, near perfect centering, regummed over a tiny thin, Extremely Fine appearance; with 2024 P.F. certificate. Scott \$100 for o.g. Estimate \$75 - 100



- 628 ★★ **Postage Due, 1884, 1¢ red brown (Scott J15)**, bright and fresh, o.g., never hinged, Fine. Scott \$200. Estimate \$75 - 100



- 629 ★★ **Postage Due, 1891, 5¢ bright claret (Scott J25)**, o.g., never hinged; a tiny natural paper inclusion, Fine to Very Fine; with 2019 P.S.E. certificate. Scott \$290. Estimate \$80 - 120



- 630 ○ **Postage Due, 1891, 30¢ bright claret (Scott J27)**, manuscript cancel, Fine. Scott \$225. Estimate \$35 - 50



- 631 ○ **Postage Due, 1891, 30¢ bright claret (Scott J27)**, light cancel, Very Good to Fine. Scott \$225. Estimate \$30 - 40



- 632 ★★ **Postage Due, 1894, 1¢ deep claret, unwatermarked (Scott J31)**, o.g., never hinged (diagonal gum bend), Fine to Very Fine. Scott \$260. Estimate \$75 - 100



- 633 ★★a **Postage Due, 1910, 5¢ deep claret, S.L. watermark, perf. 12 (Scott J48)**, plate block of 6, o.g., never hinged, Fine. Scott \$2,000. Estimate \$400 - 600



- 634 ★★ **Postage Due, 1914, 1¢ carmine lake, S.L. watermark, perf. 10 (Scott J52)**, o.g., never hinged, Fine. Scott \$220. Estimate \$60 - 80



- 635 ★★a Postage Due, 1914, 1¢ carmine lake, S.L. watermark, perf. 10 (Scott J52), block of 4, o.g., never hinged, nearly Fine. Scott \$880.
Estimate \$100 - 150



- 636 ★★a Postage Due, 1914, 1¢ carmine lake, S.L. watermark, perf. 10 (Scott J52), left margin block of 6, o.g., never hinged, Very Good to Fine. Scott \$1,320. Estimate \$300 - 400



- 637 ★★ Postage Due, 1914, 10¢ carmine lake, S.L. watermark, perf. 10 (Scott J56), o.g., never hinged, Fine to Very Fine. Scott \$200.
Estimate \$75 - 100



- 638 ★ Postage Due, 1879-1916, a group of 7 mint stamps (Scott J1/J60), including J1 (1879, 1¢ brown); J3 (3¢ brown); J24 (1891, 3¢ bright claret); J25 (5¢ bright claret); J33 (1895, 3¢ deep claret, unwatermarked); J34 (5¢ deep claret, unwatermarked); and J60 (1916, 2¢ rose, unwatermarked, perf. 10), o.g., hinged, Fine. Scott \$1,145.
Estimate \$200 - 300



- 639 ★★ Postage Due, 1917, 30¢ carmine rose, unwatermarked, perf. 11 (Scott J66), o.g., never hinged, Fine to Very Fine. Scott \$220.
Estimate \$60 - 80



- 640 ★ Postage Due, 1930, 50¢ carmine (Scott J76), o.g., very lightly hinged, Fine to Very Fine. Scott \$175.
Estimate \$60 - 80

Offices in China and Officials



- 641 ★★ **Offices in China, 1919, 2¢ on 1¢ green (Scott K1), o.g., never hinged, Fine to Very Fine; with 2018 P.S.E. certificate. Scott \$68. Estimate \$30 - 40**



- 642 ★★/★ **Offices in China, 1919, a group of 3 (Scott K1, K3, K4), including 2¢ on 1¢ green (VF-XF 85 hinged), 6¢ on 3¢ violet (F-VF 75 n.h. natural gum crease) 8¢ on 4¢ brown (F-VF 75 d.o.g.), o.g., some never hinged / some hinged, overall Fine to Very Fine; with 2018 P.S.E. certificates. Scott \$218. Estimate \$60 - 80**



- 643 ★ **Offices in China, 1919, 2¢ on 1¢ green, 4¢ on 2¢ rose, and 1922, 4¢ on 2¢ carmine (Scott K1, K2, K18), o.g., hinged, Fine to Very Fine. Scott \$145. Estimate \$50 - 75**



- 644 ○ **Offices in China, 1919, 2¢ on 1¢ green, and 16¢ on 8¢ olive bister (Scott K1, K8), both lightly canceled, Fine to Very Fine. Scott \$210. Estimate \$60 - 80**



- 645 ★★ **Offices in China, 1919, 14¢ on 7¢ black (Scott K7), o.g., never hinged, Fine to Very Fine. Scott \$215. Estimate \$75 - 100**



- 646 ★ **Offices in China, 1919, 18¢ on 9¢ salmon red (Scott K9), o.g., lightly hinged, Very Fine to Extremely Fine; with 2018 P.S.E. certificate graded VF-XF 85. Scott \$60. SMQ \$75. Estimate \$50 - 75**



- 647 ★★ **Offices in China, 1919, 24¢ on 12¢ brown carmine (Scott K11), o.g., never hinged, Fine. Scott \$150. Estimate \$50 - 75**



- 648 ★ **Offices in China, 1919, \$2 on \$1 violet brown (Scott K16), o.g., hinged, Fine; with P.S.E. encapsulated certificate graded F 70. Scott \$425. SMQ \$345. Estimate \$200 - 300**



- 649 ★ **Agriculture Dept., 1873, 3¢ yellow**
(Scott O3), exceptionally well centered, o.g.,
hinged; natural paper inclusion on chin, Very Fine.
Scott \$225. Estimate \$100 - 150



- 650 ★ **Interior Dept., 1873, 24¢ vermilion**
(Scott O22), o.g., hinged, Fine. Scott \$180.
Estimate \$40 - 60



- 651 ★ **Navy Dept., 1873, 15¢ ultramarine**
(Scott O42), bright fresh color, o.g., hinge remnant,
Fine. Scott \$425. Estimate \$100 - 150

Parcel Post



- 652 ★★ **Parcel Post, 1913, 1¢ Post Office Clerk (Scott Q1)**, o.g., never hinged, Very Fine to
Extremely Fine; with 2025 P.F. certificate graded
VF-XF 85. Scott \$12. SMQ \$30. Estimate \$25 - 35



- 653 ★★a **Parcel Post, 1913, 1¢ Post Office Clerk (Scott Q1)**, plate block of 6, o.g., never
hinged, Fine to Very Fine. Scott \$175. Estimate
\$60 - 80



- 654 ★★a **Parcel Post, 1913, 1¢ Post Office Clerk (Scott Q1)**, plate block of 6, o.g., never
hinged; perf separations in the left vertical row, Fine
to Very Fine. Scott \$175. Estimate \$50 - 75



655 ★a Parcel Post, 1913, 1¢ Post Office Clerk (Scott Q1), plate block of 6, o.g., lightly hinged, Fine to Very Fine. Scott \$100. Estimate \$40 - 60



656 ★★a Parcel Post, 1913, 2¢ City Carrier (Scott Q2), plate block of 6, o.g., never hinged, Fine to Very Fine. Scott \$120. Estimate \$40 - 60



657 ★a Parcel Post, 1913, 3¢ Railway Postal Clerk (Scott Q3), plate block of 6, o.g., hinged; perf reinforcements in right vertical row, Fine. Scott \$250. Estimate \$60 - 80



658 ★a Parcel Post, 1913, 4¢ Rural Carrier (Scott Q4), plate block of 6, o.g., lightly hinged, Fine to Very Fine. Scott \$975. Estimate \$250 - 350



- 659 ★★a Parcel Post, 1913, 5¢ Mail Train (Scott Q5), plate block of 6, o.g., never hinged, Very Good to Fine. Scott \$1,550. Estimate \$150 - 200



- 660 ★★a Parcel Post, 1913, 10¢ Steamship and Mail Tender (Scott Q6), plate block of 6, o.g., never hinged, Very Good. Scott \$1,600. Estimate \$150 - 200



- 661 ★★ Parcel Post, 1913, 20¢ Airplane Carrying Mail (Scott Q8), o.g., never hinged, Fine. Scott \$260. Estimate \$75 - 100



- 662 ★★ Parcel Post, 1913, \$1 Fruit Growing (Scott Q12), plate number single, o.g., never hinged, Very Fine; with 2012 P.S.E. certificate graded VF 80 J. Scott \$625. SMQ \$775. Estimate \$500 - 750



- 663 ★★ Parcel Post Postage Due, 1913, 2¢ dark green (Scott JQ2), well centered, o.g., never hinged (some minor offset on gum), Very Fine. Scott \$160. Estimate \$100 - 150



- 664 ★★ Parcel Post Postage Due, 1913, 10¢ and 25¢ dark green (Scott JQ4, JQ5), o.g., never hinged, Fine. Scott \$525. Estimate \$100 - 150

Locals and Postal Stationery



- 665 ★ Parcel Post Postage Due, 1913, 10¢ and 25¢ dark green (Scott JQ4, JQ5), o.g., hinged; 10¢ has a thin at top left, otherwise Fine. Scott \$195. Estimate \$30 - 40



- 666 ○ Special Handling, 1955, 20¢ light green, dry printing (Scott QE3b), light cancel, Fine to Very Fine. Scott \$150. Estimate \$80 - 120



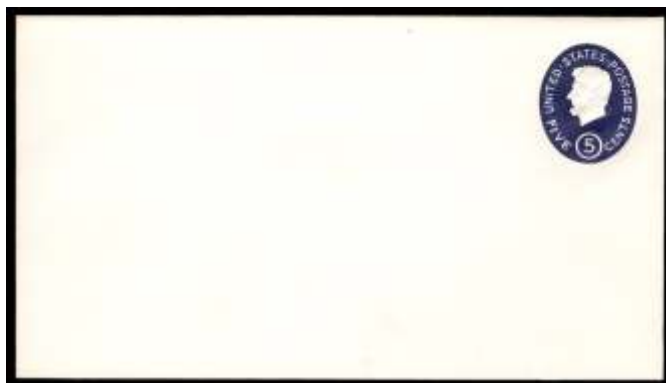
- 667 ★a American Letter Mail Co., 1844, 5¢ black, thin paper (2nd printing) (Scott 5L1), block of 15, an impressive multiple, Extremely Fine. Scott \$133. Estimate \$75 - 100



- 668 ★ Wells Fargo & Co., 1861, \$1 red (Scott 143L3), o.g., hinged; stain on reverse, Fine. Scott \$150. Estimate \$50 - 75



- 669 ★✉ Envelope, 1863, Nesbitt 4th Issue, 2¢ black on buff, "U.S. POSTAGE" above, "2" touches frame (Scott U46), mint entire, Fine to Very Fine. Scott \$80. Estimate \$40 - 60



- 670 ★✉ Envelope, 1962, 5¢ dark blue, die 3, with albino impression of 4¢ (Scott U544d), mint entire, Extremely Fine. Scott \$125.
Estimate \$60 - 80



- 671 ★ Envelope, War Dept., 1875, 1¢ red on amber (Scott UO45), cut square, Very Fine. Scott \$800.
Estimate \$300 - 400

Revenue and Duck Stamps



- 672 ★★ Motor Vehicle Use, 1945, \$4.17 bright blue green & yellow green (Scott RV44), o.g., never hinged, Very Fine to Extremely Fine; with 2021 P.S.E. certificate graded **VF-XF 85**. Scott \$75.
Estimate \$60 - 80



- 673 ★★ Federal Duck Stamp, 1934, \$1 Mallards (Scott RW1), o.g., never hinged, Fine to Very Fine. Scott \$775.
Estimate \$150 - 200



- 674 ★★ Federal Duck Stamp, 1939, \$1 Green-winged Teals (Scott RW6), plate number single, o.g., never hinged (gum skips), Very Fine. Scott \$250.
Estimate \$100 - 150



- 675 ★★ Federal Duck Stamp, 1943, \$1
Wood Ducks (Scott RW10), plate number single,
o.g., never hinged, Very Fine. Scott \$120.
Estimate \$50 - 75



- 676 ★★ Federal Duck Stamp, 1948, \$1
Buffleheads (Scott RW15), o.g., never hinged,
Very Fine to Extremely Fine; with 2025 P.F. certi-
ficate graded **VF-XF 85**. Scott \$60. SMQ \$80.
Estimate \$50 - 75



- 677 ★★ Federal Duck Stamp, 1954, \$2
Ring-necked Ducks (Scott RW21), o.g., never
hinged, Very Fine. Scott \$85. Estimate \$40 - 60



- 678 ★★ Federal Duck Stamps, 1955-84, a
group of 8 plate number singles (Scott
RW24/RW51), including RW#s 24, 27, 36, 40, 42,
44, 50 and 51; all imaged here, o.g., never hinged,
Very Fine. Scott \$316. Estimate \$75 - 100



- 679 ★★ Federal Duck Stamp, 1957, \$2
American Eider (Scott RW24), sheet margin sin-
gle, o.g., never hinged, Extremely Fine; with 2024
P.F. certificate graded **XF 90**. Scott \$85. SMQ
\$150. Estimate \$80 - 120



- 680 ★★ Federal Duck Stamp, 2009, \$15 Long-Tailed Duck, souvenir sheet of 1 (Scott RW76b), o.g., never hinged, Superb. Scott \$60. Estimate \$60 - 80



- 681 ★★ Federal Duck Stamp, 2006, \$15 Ross's Goose, souvenir sheet of 1 (Scott RW73b), signed by the artist and by the engraver, o.g., never hinged, Extremely Fine to Superb; with 2006 P.S.E. certificate graded **XF-SUP 95**. Scott \$95. SMQ \$225. Estimate \$150 - 200
- 682 ★★ Federal Duck Stamps, 1938-99, a group of 6 superlative stamps (Scott RW5//RW66), including #RW5 (1938, \$1 Pintail Drakes); #RW32 (1965, \$3 Canvasback Drakes); #RW39 (1972, \$5 Emperor Geese); #RW43 (1976, \$5 Canada Geese); #RW63 (1996, \$15 Surf Scoters); and #RW66 (1999, \$15 Greater Scaup); these should definitely be graded as they will no doubt come back as 95+! o.g., never hinged, Extremely Fine to Superb. Scott \$640. Estimate \$200 - 300
- 683 ★★ Federal Duck Stamps, 1957-77, a group of 13 different (Scott RW24-32, RW35, RW41-44), o.g., never hinged, Fine to Very Fine. The lot also contains 9 collector's duplicates with small faults (photo'd but not counted in catalog value). Scott \$921. Estimate \$300 - 400
- 684 (★)a Junior Duck Stamps, 2004-2008, a group of 4 (Scott JDS 11, 12, 14 and 15), plate blocks of 4, well centered, unused without gum, Very Fine to Extremely Fine. Scott \$270 as singles. Estimate \$75 - 100

U.S. Possessions

Canal Zone through Philippines



- 685 ★ **Canal Zone, 1909, 5c Arosemena, deep blue & black, type I overprint double (Scott 33a), o.g., hinged, Very Good to Fine; with 2025 P.F. certificate. Scott \$375.**

Estimate \$50 - 75



- 686 ★★ **Canal Zone, Airmail, 1939, Canal Opening's 25th Anniversary, 5c to \$1 complete (Scott C15-C20), set of 6, o.g., never hinged, Very Fine. Scott \$92.**

Estimate \$50 - 75



- 687 ✉ **Danish West Indies, 1901, 4c bistre & dull blue, diagonal bisect (Scott 18a), tied by St. Thomas 1903 c.d.s. on a small lady's cover, Very Fine. Scott \$68.**

Estimate \$50 - 75



- 688 ★ **Danish West Indies, 1901, 10c blue & brown (Scott 20), o.g., lightly hinged, Fine to Very Fine. Scott \$110.**

Estimate \$40 - 60



- 689 ★★ **Guam, Special Delivery, 1899, 10c blue, dots in curved frame above messenger (Scott E1a), o.g., never hinged, Very Good. Scott \$400.**

Estimate \$50 - 75



- 690 ★ **Hawaii, 1861, King Kamehameha III, 5c blue on thin bluish wove paper (Scott 9), 4 margins, sound, part o.g., hinge remnant, Fine. Scott \$400.**

Estimate \$180 - 240



- 691 (★) **Hawaii, 1861, King Kamehameha III, 5c blue on thin bluish wove paper, line through "Honolulu" variety (Scott 9a), position 2, 4 margins, unused without gum; small fault, attractive Fine to Very Fine appearance. Scott \$950.**

Estimate \$200 - 300



- 692 ★a **Hawaii, 1889, King Kamehameha III, 13¢ orange red, reprint (Scott 11R)**, block of 4, ample to large margins, o.g., hinge remnants; thinned, Very Fine appearance. Scott \$1,200.
Estimate \$200 - 300



- 693 (★) **Hawaii, 1863, Numeral, 1¢ black on grayish (Scott 15)**, position 4-B-II, 4 ample margins, unused without gum; faults (thin spot and light creases), otherwise Very Fine; with 2023 P.S.A.G. certificate. Scott \$650. Estimate \$100 - 150



- 694 ○ **Hawaii, 1861, King Kamehameha IV, 2¢ pale rose, horizontally laid paper (Scott 27)**, sheet margin at top, in at bottom, lightly canceled, nearly Fine. Scott \$350.
Estimate \$120 - 180



- 695 ○ **Hawaii, 1883, Queen Emma, \$1 rose red (Scott 49)**, neat Maltese Cross cancel, Fine, ex-Atherton. Scott \$150. Estimate \$75 - 100



- 696 ○ **Hawaii, 1894, View of Honolulu, 2¢ brown, "flying goose" flaw (Scott 75 var.)**, position 48LR2, well centered, lightly canceled; small faults, an Extremely Fine appearing example of this popular variety. Scott \$475. Estimate \$100 - 150



- 697 ★★a **Philippines, 1941, 2c apple green, rotary definitive, plus overprinted Official (Scott 461, O8, O37)**, complete sheets of 100, also includes O8 plate number and imprint block of 18, an interesting group, o.g., never hinged, mostly Very Fine. Scott \$113. Estimate \$50 - 75



- 698 (★) **Ryukyus, 1958, U.S. Currency Provisional, 3¢ deep carmine, horizontal pair, imperf. between (Scott 47a), without gum as issued, Fine. Scott \$200. J.S.C.A. 47 var.**
Estimate \$50 - 75



- 699 ★★ **Ryukyus, Airmail, 1950, 1st Issue, 8y to 16y complete (Scott C1-C3), set of 3, o.g., never hinged, Fine to Very Fine. Scott \$137. J.S.C.A. A1-3.**
Estimate \$50 - 75



- 700 ★★ **Ryukyus, Airmail and Special Delivery, 1950-59, a group of 11 better mint stamps (Scott C1/E1), including C1, Airmail, 1950, 1st Issue, 8y bright blue; C2, Airmail, 1950, 1st Issue, 12y green; C4-8, Airmail, 1951-54, 2nd Issue, 13y-50y complete; C13, Airmail, 1957, 3rd Issue, 60y gray; C17-18, Airmail, 1959, 3rd Issue surcharged, 27¢ on 45y reddish brown 35¢ on 60y gray; E1, Special Delivery, 1950, 5y bright blue, o.g., never hinged, Fine to Very Fine. Scott \$216.**
Estimate \$60 - 80