

Gem Series Sale

featuring

An entirely U.S. Selection of Gem Quality Stamps, Many Graded
as well as
U.S. Collections and U.S. Philatelic Literature



Sale 49
June 25, 2022



Golden
Oak | Online
Auctions

Gem Series sale of high quality U.S. stamps

Beginning at 11:00 AM Eastern time (10:00 AM Central time, 8:00 AM Pacific time)

U.S. Stamps

1846-1869 Issues	1-17
1873-1888 Bank Note Co. Issues	18-25
1890-1898 Issues	26-40
1901 Pan-American Issue	41-44
1902-1908 Regular and Commemorative Issues	45-53
1908-1911 Washington-Franklin Issues	54-64
1913-1915 Panama-Pacific Issue	65-71
1912-1919 Washington-Franklin Issues	72-97
1920-1929 Issues	98-134
1930-1939 Issues	135-161
1940-1949 Issues	162-179
1950-1953 Issues	180-187
1954 Liberty Issue	188-217
1954-1979 Issues	218-237
High Grade Groups	238-246
Airmail.	247-282
Special Delivery and Registry	283-288
Offices in China and Officials	289-292
Parcel Post	293-298
Postal Stationery	299-300
Duck Stamps	301-314
Confederacy	315

U.S. Collections, Stocks and Accumulations

Postal Stationery Collections	316-320
Postal History and Cover Collections	321-326
Stamp Collections.	327-351
Dealers Stocks and Accumulations	352-367
Face Value Lots.	368-370

U.S. Philatelic Literature

General Works	371-382
Anthologies Etc..	383-385

U.S. Stamps

1846-1869 Issues



- 1 ○ **New York, N.Y., 1846, 5¢ black on bluish, signed "ACM" connected, double transfer in "POST" (Scott 9X1 var.),** position 23, ample margins all around, neat blue pen cancels, Very Fine; with 2004 P.F. certificate. Estimate \$500 - 750
Hammer Price \$550

Scott prices several double transfers (all at \$525), but does not price this position. Stanley Piller's book on the New York Provisional refers to the double transfer as a printing "shift" resulting in dots in the top label and also in "FIVE CENTS".



- 2 ○ **1852, 1¢ blue, type IV (Scott 9),** position 3R1L, recut twice at bottom, a world-class gem with enormous margins all around including sheet margin at top and parts of neighboring stamps at left and at bottom, Extremely Fine; with 2006 P.F. certificate graded **XF 90J**. SMQ \$400
Estimate \$250 - 350
Unsold



- 3 ○ **1852, 1¢ blue, type IV, double transfer (Scott 9 var.),** magnificent margins all around including bits of neighboring stamps at top, left and bottom, Extremely Fine; with 2011 P.S.E. certificate graded **XF 90**. Scott \$110
SMQ \$200
Estimate \$150 - 200
Hammer Price \$120



- 4 ○ **1852, 1¢ blue, type IV (Scott 9),** neat c.d.s. cancel, Extremely Fine; with 2022 P.F. certificate graded **XF 90**. Scott \$100
SMQ \$200
Estimate \$120 - 180
Hammer Price \$90



- 5 ○ **1852, 1¢ blue, type IV (Scott 9),** position 83R1L, a gem with margins all around including parts of the next stamp at left and at bottom, Extremely Fine. Scott \$100
Estimate \$100 - 150
Unsold



- 6 ○ **1851, 12¢ gray black (Scott 17)**, a gem with large to huge margins all around including part of the next stamp at bottom, plus a neat red grid cancel, Extremely Fine and choice. Scott \$280
Estimate \$150 - 200
Hammer Price \$160



- 10 ○ **1857, 3¢ dull red, type IV (Scott 26A)**, Newburgh, Pa. c.d.s., well centered for this issue, Very Fine. Scott \$150
Estimate \$75 - 100
Unsold



- 7 ○ **1857, 1¢ blue, type II (Scott 20)**, plate 12, position 63L12, unusually well centered for this narrow-margined issue (type characteristics show clearly), neat New York town cancel, Very Fine to Extremely Fine; with 2010 and 2000 P.F. certificates. Scott \$325
Estimate \$200 - 300
Hammer Price \$375



- 11 ○ **1859, 10¢ green, type V (Scott 35)**, a used gem with near perfect centering within very large margins, and with a neat light cancel, Extremely Fine to Superb. Scott \$55
Estimate \$60 - 80
Hammer Price \$45



8



9

- 8 ★ **1857, 3¢ dull red, type III (Scott 26)**, fantastically well centered for this narrow-margined issue, o.g., very lightly hinged, Extremely Fine and choice; with 2013 P.F. certificate. Scott \$65
Estimate \$100 - 150
Hammer Price \$75



- 12 ○ **1861, 12¢ black (Scott 69)**, a magnificent gem with essentially perfect centering and a light cancel, Extremely Fine or better. Scott \$95
Estimate \$100 - 150
Unsold

- 9 ★ **1857, 3¢ dull red, type III (Scott 26)**, extraordinarily well centered for this very difficult issue, perfs are clear of the frame on all sides, o.g., hinged, Extremely Fine and choice. Scott \$65
Estimate \$75 - 100
Unsold



- 13 ○ **1863, 2¢ black (Scott 73)**, a magnificent Black Jack with centering that approaches mathematical perfection and a neat light c.d.s., Extremely Fine or better. Scott \$60
Estimate \$75 - 100
Hammer Price \$90

1873-1888 Bank Note Co. Issues



- 14 ○ **1866, 15¢ black (Scott 77)**, neat cork cancel, Very Fine to Extremely Fine; with 2022 P.F. certificate graded **VF-XF 85**.
 Scott \$175
 SMQ \$300
 Estimate \$200 - 300
 Hammer Price \$170



- 15 ○ **1869, 12¢ S.S. Adriatic (Scott 117)**, outstandingly well centered within large margins, with neat red and black cancels, Extremely Fine and choice.
 Scott \$280
 Estimate \$200 - 300
 Unsold



- 16 ○ **1869, 12¢ S.S. Adriatic (Scott 117)**, unusually well centered, neat star cancel, Very Fine to Extremely Fine.
 Scott \$130
 Estimate \$75 - 100
 Hammer Price \$55



- 17 ○ **1869, 24¢ Declaration of Independence (Scott 120)**, a used gem with intense color on bright white paper and beautifully centered; this will definitely grade high! Extremely Fine and choice; with 1984 P.F. certificate.
 Scott \$650
 Estimate \$500 - 750
 Unsold

- 18 Withdrawn -



- 19 ○ **1879, 5¢ Taylor, A.B.N.C. printing (Scott 185)**, a used gem, outstandingly well centered, with a 5-pointed star cancel and a bit of a c.d.s. at bottom right, Extremely Fine and choice; with 2008 P.S.E. certificate graded **XF 90**.
 SMQ \$110
 Estimate \$75 - 100
 Hammer Price \$55



- 20 ○ **1879, 10¢ Jefferson, A.B.N.C. printing, with secret mark (Scott 188)**, a stunning gem, beautifully well centered within huge jumbo margins and very lightly canceled, Extremely Fine; with 2004 P.S.E. certificate graded **XF 90J**.
 SMQ \$225
 Estimate \$150 - 200
 Hammer Price \$140



- 21 ○ **1882, 10¢ Jefferson, re-engraved, brown (Scott 209)**, a gorgeous used gem with near perfect centering amid jumbo margins, plus a very light cancel, Extremely Fine to Superb; with 2018 P.S.E. certificate graded **XF-SUP 95J**.
 SMQ \$325
 Estimate \$200 - 300
 Unsold



- 22 ○ **1883, 2¢ Washington (Scott 210)**, a wonderfully choice used gem, beautifully well centered, with a duplex cancel, Extremely Fine; with 2022 P.S.E. certificate graded **XF 90**.
 SMQ \$75
 Estimate \$50 - 75
 Hammer Price \$40



- 25 ○ **1888, 5¢ Garfield (Scott 216)**, well centered within huge margins, lightly canceled, a Very Fine jumbo.
 Scott \$20
 Estimate \$30 - 40
 Unsold



- 23 ★★ **1883, 2¢ Washington, pale red brown, Special Printing (Scott 211B)**, post office fresh and mathematically precise centering, o.g., never hinged; two tiny natural inclusions mentioned only for accuracy, Extremely Fine to Superb; with 2011 and 1994 P.F. certificates.
 Scott \$1,000
 Estimate \$1,200 - 1,800
 Hammer Price \$1,400



- 24 ★★ **1888, 4¢ Jackson (Scott 215)**, a world-class gem with gorgeous centering, o.g., never hinged, Extremely Fine and choice; with 2007 P.F. certificate graded **XF 90** and 1998 P.F. certificate, a gem.
 Scott \$525
 SMQ \$1,800
 Estimate \$1,500 - 2,000
 Hammer Price \$1,500

1890-1898 Issues



- 26 ★★ 1890, 1¢ Franklin (Scott 219), magnificent centering, with rich color and razor sharp impression, o.g., never hinged, Extremely Fine; with 2017 P.F. certificate graded **XF 90J** and 2002 P.F. certificate. Scott \$65
SMQ \$450
Estimate \$300 - 400
Hammer Price \$300



- 27 ★ 1890, 2¢ Washington, lake (Scott 219D), intense color and impression and very well centered, o.g., hinged, Very Fine to Extremely Fine. Scott \$150
Estimate \$120 - 150
Hammer Price \$80



- 28 ○ 1890, 90¢ Perry (Scott 229), perfectly centered, with a neat duplex cancel, black barrel oval cancellation, Very Fine to Extremely Fine; with 2022 Crowe certificate graded **VF-XF 85**. Scott \$140
SMQ \$220
Estimate \$150 - 200
Hammer Price \$130



- 29 ★ 1893, 3¢ Columbian (Scott 232), beautifully well centered, o.g., minimally hinged, Very Fine to Extremely Fine. Scott \$35
Estimate \$40 - 60
Unsold



- 30 ★★ 1893, 15¢ Columbian (Scott 238), o.g., never hinged, Very Fine; with 2022 P.F. certificate graded **VF 80**. Scott \$600
SMQ \$675
Estimate \$400 - 600
Hammer Price \$275



- 31 ★ 1893, 15¢ Columbian (Scott 238), an exceptionally choice gem featuring near perfect centering and rich bright color, o.g., very lightly hinged, Extremely Fine; with 1989 P.F. certificate. Scott \$200
Estimate \$150 - 200
Hammer Price \$150



- 32 ○ **1893, 50¢ Columbian (Scott 240)**, a used gem boasting near perfect centering and an unusually light cancel, Extremely Fine to Superb; with 2020 P.S.A.G. certificate graded **XF-SUP 95**, plus ungraded 1989 A.P.S. certificate, *only four stamps grade higher in PSE's Population Report.*

Scott \$175
 SMQ \$1,200
 Estimate \$400 - 600
 Hammer Price \$375



- 35 ★★ **1895, 5¢ Grant, D.L. watermark (Scott 270)**, a beautiful top margin part imprint single, with near perfect centering, o.g., stamp never hinged, hinged in selvage only, Extremely Fine; with 2013 P.S.E. certificate graded **XF 90**.

SMQ \$300
 Estimate \$200 - 300
 Unsold



- 33 ★★ **1894, 2¢ Washington, type I, carmine lake, unwatermarked (Scott 249)**, o.g., never hinged, Very Fine; with 2022 P.F. certificate graded **VF 80**.

Scott \$450
 SMQ \$450
 Estimate \$300 - 400
 Hammer Price \$275



- 36 ○ **1895, 8¢ Sherman, D.L. watermark (Scott 272)**, a used gem with near perfect centering and a neat light duplex cancel, Extremely Fine to Superb; with 2019 P.S.A.G. certificate graded **XF-SUP 95**.

SMQ \$165
 Estimate \$100 - 150
 Hammer Price \$80



- 34 ★★ **1895, 1¢ Franklin, D.L. watermark (Scott 264)**, a magnificent part imprint single, with essentially perfect centering and brilliant color, pristine Post Office fresh o.g., never hinged, Extremely Fine to Superb.

Estimate \$100 - 150
 Hammer Price \$275



- 37 ○ **1895, 10¢ Webster, D.L. watermark (Scott 273)**, a marvelous used gem with near perfect centering and a neat target cancel, Extremely Fine to Superb; with 2011 P.S.E. certificate graded **XF-SUP 95**.

SMQ \$225
 Estimate \$150 - 200
 Hammer Price \$120



- 38 ★ 1895, 15¢ Clay, D.L. watermark (Scott 274), rich color and impression and beautifully centered, o.g., hinged, Extremely Fine and choice.
 Scott \$200
 Estimate \$150 - 200
 Hammer Price \$130



- 39 ★★ 1898, 6¢ Garfield (Scott 282), a gem with near perfect centering, plus radiant color and impression, o.g., never hinged, Extremely Fine and choice; with 2014 P.S.E. certificate graded **XF 90**.
 Scott \$140
 SMQ \$475
 Estimate \$300 - 400
 Hammer Price \$500



- 40 ★★ 1898, 1¢ Trans-Miss. (Scott 285), a beauty with essentially perfect centering, o.g., never hinged, Extremely Fine or better; with 2002 P.S.E. certificate.
 Scott \$75
 Estimate \$75 - 100
 Hammer Price \$130

1901 Pan-American Issue



- 41 ★★ 1901, 2¢ Pan-American (Scott 295), a beautiful bottom margin pair with plate number and part imprint, fresh and wonderfully well centered, immaculate o.g., never hinged, Extremely Fine and choice.
 Scott \$75+
 Estimate \$60 - 80
 Hammer Price \$100



42

- 42 ★★ 1901, 4¢ Pan-American (Scott 296), clean with fresh colors and crisp detail; perforations at left complete with vertical guide line running across them, o.g., never hinged, Very Fine.
 Scott \$170
 Estimate \$100 - 150
 Hammer Price \$75



43

- 43 ○ 1901, 5¢ Pan-American (Scott 297), a wonderfully choice used gem, exceptionally well centered and very lightly canceled, Extremely Fine; with 2008 P.F. certificate graded **XF 90**.
 SMQ \$125
 Estimate \$80 - 120
 Hammer Price \$60



- 44 ○ 1901, 8¢ Pan-American (Scott 298), near perfect centering within ample margins, and with a neat registry cancel, Extremely Fine and choice; with 2014 P.S.A.G. certificate graded **XF 90**.
 SMQ \$150
 Estimate \$80 - 120
 Hammer Price \$65

1902-1908 Regular and Commemorative Issues



- 45 ★ 1903, 1¢ Franklin (Scott 300), a one-in-a-million gem, fantastically well centered within jumbo margins and with a neat light machine cancel, Extremely Fine to Superb; with 2009 P.S.E. certificate graded **XF-SUP 95J**. SMQ \$175
Estimate \$120 - 150
Hammer Price \$120



- 46 ★ 1903, 6¢ Garfield (Scott 305), o.g., invisibly hinged, Extremely Fine and choice; with 2021 P.F. certificate graded **XF 90**. SMQ \$95
Estimate \$60 - 80
Hammer Price \$75



- 47 ★ 1902-03, 10¢ Webster and 13¢ Harrison (Scott 307, 308), a beautifully centered duo, o.g., hinge remnant, 13¢ is Extremely Fine to Superb, 10¢ is V.F.-X.F.; each with 2021 P.F. certificate graded **XF-SUP 95J** (13¢) or **VF-XF 85J** (10¢). SMQ \$195
Estimate \$100 - 150
Hammer Price \$130



- 48 ★ 1903, 50¢ Jefferson (Scott 310), beautifully well centered, very bright and fresh, o.g., lightly hinged, Very Fine to Extremely Fine. Scott \$425
Estimate \$300 - 400
Unsold



- 49 ★★ 1908, 5¢ Lincoln, imperf (Scott 315), a world-class gem example with jumbo margins all around including sheet margin at left, o.g., never hinged, Superb; with encapsulated P.S.E. certificate graded **SUP 98**. SMQ \$1,000
Estimate \$750 - 1,000
Hammer Price \$800



- 50 ★★ 1904, 10¢ Louisiana Purchase (Scott 327), a gem with gorgeous near perfect centering, o.g., never hinged, Extremely Fine and choice; with 2007 P.S.E. certificate graded **XF 90**. Scott \$300
SMQ \$750
Estimate \$500 - 750
Hammer Price \$700



- 51 ★ 1904, 10¢ Louisiana Purchase (Scott 327), a beauty with near perfect centering, o.g., hinged, Extremely Fine; with 2020 P.S.E. certificate graded **XF 90**.
 Scott \$125
 SMQ \$250
 Estimate \$150 - 200
 Hammer Price \$120



- 52 ★ 1907, 1¢ Jamestown (Scott 328), a used gem, wonderfully well centered, with a neat wavy line cancel, Very Fine to Extremely Fine; with 2022 P.F. certificate graded **VF-XF 85**.
 SMQ \$55
 Estimate \$35 - 50
 Unsold



- 53 ★★ 1907, 5¢ Jamestown (Scott 330), a wonderfully choice corner margin single, outstandingly well centered within oversized margins, pristine o.g., never hinged, Very Fine, a gorgeous example of a stamp that is well-known for being usually off-center; with 2005 P.S.E. certificate *conservatively* graded **VF 80J**.
 Scott \$375
 SMQ \$450
 Estimate \$300 - 400
 Unsold

1908-1911 Washington-Franklin Issues



- 54 ○ 1908, 1¢ Franklin, green, D.L. watermark (Scott 331), a used gem, beautifully well centered within eye-popping jumbo margins, Extremely Fine to Superb; with 2018 P.S.E. certificate graded **XF-SUP 95J**.
 SMQ \$85
 Estimate \$60 - 80
 Hammer Price \$130



- 55 ★★ 1909, 13¢ Washington, blue green, D.L. watermark (Scott 339), a gorgeous part imprint single, beautifully well centered and with vibrant color, o.g., never hinged, Extremely Fine; with 2009 P.S.E. certificate graded **XF 90**.
 SMQ \$225
 Estimate \$150 - 200
 Hammer Price \$250



- 56 ★ 1908, 1¢ Franklin, green, D.L. watermark, vertical coil (Scott 348), a beautifully well centered pair, o.g., lightly hinged, Extremely Fine; with 2021 P.F. certificate graded **XF 90**.
 Scott \$110
 SMQ \$175
 Estimate \$100 - 150
 Hammer Price \$130



- 57 ★★ 1909, 5¢ Washington, blue, D.L. watermark, vertical coil (Scott 351), a wonderfully choice line pair, beautifully fresh and well centered, a premium quality example of a very scarce stamp, pristine o.g., never hinged, Very Fine; with 2022 P.F. certificate graded **VF 80**, plus an ungraded 1975 P.F. certificate. Scott \$2,350
SMQ \$2,400
Estimate \$1,500 - 2,000
Hammer Price \$1,500



- 58 ○田 1909, 2¢ Lincoln Centenary, imperf (Scott 368), a lovely used block of 4, with large even margins and neat c.d.s.'s, Very Fine to Extremely Fine. Scott \$90
Estimate \$60 - 80
Hammer Price \$55



- 59 ★★ 1909, 2¢ Alaska-Yukon, imperf (Scott 371), a magnificent plate number single, with huge jumbo margins including parts of 3 neighboring stamps, o.g., never hinged, Superb; with 2005 P.S.E. certificate graded **SUP 98J**. SMQ \$175
Estimate \$120 - 150
Hammer Price \$120



- 60 ○ 1910, 1¢ Franklin, green, S.L. watermark (Scott 374), magnificent centering and a neat light cancel, Extremely Fine to Superb; with **encapsulated** P.S.E. certificate graded **XF-SUP 95**. SMQ \$75
Estimate \$40 - 60
Hammer Price \$75



- 61 ○ 1910, 2¢ Washington, carmine, S.L. watermark (Scott 375), magnificent centering, Extremely Fine to Superb; with **encapsulated** P.S.E. certificate graded **XF-SUP 95**. SMQ \$60
Estimate \$40 - 60
Unsold



62 ★ 1911, 3¢, 4¢ and 5¢ Washington, S.L. watermark (Scott 376-378), a beautifully well centered group of 3, o.g., 3¢ hinged, others lightly hinged, Very Fine to Extremely Fine or better.

Scott \$74
Estimate \$60 - 80
Unsold



63 ★ 1911, 4¢ Washington, brown, S.L. watermark (Scott 377), a gorgeous top margin single with magnificent centering, jumbo margins and bright fresh color, o.g., invisibly hinged, Extremely Fine to Superb; with 2015 P.S.E. certificate graded **XF-SUP 95J**.

SMQ \$120
Estimate \$80 - 120
Hammer Price \$250



64 ○ 1911, 4¢ Washington, brown, S.L. watermark (Scott 377), a gem with radiant color and nicely centered within immense margins, wavy line cancel, a Very Fine jumbo; with 2005 P.S.E. certificate.

Estimate \$40 - 60
Hammer Price \$45

1913-1915 Panama-Pacific Issue



65 ★ 1913, 1¢ Panama-Pacific, perf 12 (Scott 397), a used gem, extraordinarily well centered and with a light machine cancel, Extremely Fine; with 2010 P.F. certificate graded **XF 90 XQ**. SMQ \$85

Estimate \$60 - 80
Unsold



66 ★★ 1913, 1¢ Panama-Pacific, perf 12 (Scott 397), beautiful centering and bright fresh color, pristine o.g., never hinged, Very Fine; with 2017 P.S.E. certificate graded **VF 80**.

Scott \$35
SMQ \$40
Estimate \$30 - 40
Hammer Price \$24



67 ★★ 1913, 1¢ Panama-Pacific, perf 12 (Scott 397), top margin plate number strip of 3, beautifully well centered, o.g., never hinged; a minor gum bend at left and a tiny trivial perf disc indent at right, Very Fine to Extremely Fine overall.

Scott \$105 as singles
Estimate \$75 - 100
Hammer Price \$80



- 68 ★ 1913, 5¢ Panama-Pacific, perf 12 (Scott 399), a gem with superlative centering, o.g., invisibly hinged (appears never hinged), Extremely Fine to Superb; with 2003 P.S.E. certificate graded **XF-SUP 95**.
 SMQ \$200
 Estimate \$150 - 200
 Hammer Price \$140



- 69 ★★ 1913, 10¢ Panama-Pacific, perf 12, orange yellow (Scott 400), a wonderfully choice gem with centering that approaches mathematical perfection, o.g., never hinged, Extremely Fine to Superb; with 2019 P.S.E. certificate graded **XF-SUP 95**, plus ungraded 1996 P.F. certificate. Scott \$260
 SMQ \$900
 Estimate \$600 - 800
 Hammer Price \$650



70



71

- 70 ○ 1913, 10¢ Panama-Pacific, perf 12, orange (Scott 400A), a used gem with exquisite centering, Extremely Fine to Superb; with 2019 P.S.A.G. certificate graded **XF-SUP 95**.
 SMQ \$225
 Estimate \$150 - 200
 Unsold

- 71 ○ 1915, 5¢ Panama-Pacific, perf 10 (Scott 403), a wonderfully choice used gem, beautifully well centered and with a neat light cancel, Extremely Fine to Superb; with 2014 P.F. certificate graded **XF-SUP 95**.
 SMQ \$200
 Estimate \$150 - 200
 Hammer Price \$120

1912-1919 Washington-Franklin Issues



- 72 ○ 1912, 1¢ Washington, green, S.L. watermark, perf 12 (Scott 405), a wonderfully choice used gem, featuring magnificent centering and a neat light cancel, Extremely Fine to Superb; with encapsulated P.S.A.G. certificate graded **XF-SUP 95**.
 SMQ \$130
 Estimate \$80 - 120
 Hammer Price \$65



- 73 ★★/★田 1914, 7¢ Washington, black, S.L. watermark, perf 12 (Scott 407), block of 4, beautifully well centered throughout, o.g., top pair with hinge remnant, bottom left stamp minimally hinged, bottom right stamp never hinged, top pair Extremely Fine, bottom pair V.F.-X.F.; with 2015 P.F. certificate. Scott \$360
 Estimate \$250 - 350
 Unsold



- 74 ○ 1912, 2¢ Washington, carmine, S.L. watermark, horizontal coil (Scott 413), a used gem with gorgeous centering and a neat Baltimore c.d.s., Extremely Fine to Superb; with 2019 P.S.A.G. certificate graded **XF-SUP 95**.
 Scott \$50
 SMQ \$275
 Estimate \$150 - 200
 Hammer Price \$150



- 75 ★ 1912, 8¢ Franklin, pale olive green, S.L. watermark, perf 12 (Scott 414), a beauty with near perfect centering, o.g., very lightly hinged, Extremely Fine to Superb; with 2007 P.S.E. certificate graded **XF-SUP 95**.
 SMQ \$125
 Estimate \$80 - 120
 Hammer Price \$110



- 78 ★ 1914, 30¢ Franklin, orange red, S.L. watermark, perf 12 (Scott 420), a beauty with magnificent near perfect centering, o.g., lightly hinged, Extremely Fine to Superb; with 2008 P.S.E. certificate graded **XF-SUP 95**.
 SMQ \$265
 Estimate \$180 - 240
 Hammer Price \$190



- 76 ★ 1912, 15¢ Franklin, gray, S.L. watermark, perf 12 (Scott 418), a beautiful stamp, extraordinarily well centered, o.g., barest trace of hinge, Extremely Fine; with 2008 P.S.E. certificate graded **XF 90J**.
 Scott \$80
 SMQ \$175
 Estimate \$100 - 150
 Hammer Price \$100



- 79 ○ 1914, 2¢ Washington, rose red, S.L. watermark, perf 10 (Scott 425), a used gem, with gorgeous centering and a neat light cancel, Extremely Fine and choice; with **encapsulated** P.S.E. certificate graded **XF 90**.
 SMQ \$35
 Estimate \$30 - 40
 Hammer Price \$22



- 77 ★★ 1914, 20¢ Franklin, ultramarine, S.L. watermark, perf 12 (Scott 419), post office fresh with radiant color and impression, extremely well centered - a GEM! o.g., never hinged, Extremely Fine and choice; with 2013 P.F. certificate graded **XF 90 XQ**.
 Scott \$400
 Estimate \$800 - 1,200
 Hammer Price \$800



- 80 ★★ 1914, 3¢ Washington, deep violet, S.L. watermark, perf 10, "pink back" variety (Scott 426 var.), outstandingly well centered, immaculate o.g., never hinged, Extremely Fine and choice; with 2017 P.S.E. certificate graded **XF 90**.
 SMQ \$120
 Estimate \$80 - 120
 Hammer Price \$160

SMQ is \$750 for a plain XF 90. The XQ on the grade indicates "extra quality", in other words, better than a plain XF 90. SMQ for the next grade up (XF-SUP 95) is \$1550 and we have taken this into account with our estimate.



- 81 ★★ 1914, 8¢ Franklin, pale olive green, S.L. watermark, perf 10 (Scott 431), gorgeous color and beautifully centered, o.g., never hinged, Extremely Fine to Superb; with 1995 P.F. certificate.
 Scott \$80
 Estimate \$100 - 150
 Hammer Price \$160



- 84 ○ 1914, 2¢ Washington, carmine, S.L. watermark, vertical flat plate coil (Scott 442), well centered, with a neat light cancel, Extremely Fine.
 Scott \$45
 Estimate \$50 - 75
 Unsold



- 82 ★★ 1915, 11¢ Franklin, dark green, S.L. watermark, perf 10 (Scott 434), marvelously well centered, o.g., never hinged, Extremely Fine; with 2018 P.S.E. certificate graded **XF 90**.
 SMQ \$125
 Estimate \$80 - 120
 Hammer Price \$140



- 85 ★★ 1916, 5¢ Washington, dark blue, unwatermarked, perf 10 (Scott 466), well centered, with deep rich color, o.g., never hinged, Very Fine.
 Scott \$150
 Estimate \$100 - 150
 Hammer Price \$100



- 83 ★ 1914, 30¢ Franklin, orange red, S.L. watermark, perf 10 (Scott 439), o.g., very lightly hinged, Very Fine to Extremely Fine; with 2021 P.F. certificate graded **VF-XF 85**.
 Scott \$225
 SMQ \$275
 Estimate \$150 - 200
 Hammer Price \$180



- 86 ○ 1916, 6¢ Washington, red orange, unwatermarked, perf 10 (Scott 468), an outstandingly well centered gem with a light town cancel, Very Fine to Extremely Fine.
 Estimate \$40 - 60
 Hammer Price \$35



- 87 ★★ 1916, 1¢ Washington, green, unwatermarked, imperf (Scott 481), a fantastic pair, perfectly centered and surrounded by parts of 10 neighboring stamps, o.g., never hinged, Superb; with 2014 P.S.E. certificate graded **Gem 100J**.
 Estimate \$150 - 200
 Hammer Price \$150

SMQ does not price a Gem 100 J. SMQ for plain 100 is \$150.



- 89 ★★ 1917, 3¢ Washington, violet, unwatermarked, vertical rotary press coil (Scott 489), a wonderfully well centered gem, with warm rich color, o.g., never hinged, Extremely Fine to Superb; with 2018 P.S.E. certificate graded **XF-SUP 95J**.
 SMQ \$125
 Estimate \$80 - 120
 Hammer Price \$140



- 88 ★★田 1916-1917, 1¢-3¢ Washingtons, imperf (Scott 481-484), a select group of 4 different, plate blocks of 6, including 1¢ Washington, green, unwatermarked, 2¢ Washington, carmine, type I, 3¢ Washington, violet, type I, unwatermarked, and 3¢ Washington, violet, type II, unwatermarked, all with ample to jumbo margins, o.g., never hinged; gum skipped in the selva of the 2¢, Very Fine.
 Scott \$450
 Estimate \$200 - 300
 Hammer Price \$150



- 90 ★★ 1917, 4¢ Washington, orange brown, unwatermarked, horizontal rotary press coil (Scott 495), a lovely line pair, exceptionally well centered, o.g., never hinged, Very Fine to Extremely Fine; with 2006 P.S.E. certificate graded **VF-XF 85**.
 Scott \$160
 SMQ \$210
 Estimate \$150 - 200
 Hammer Price \$130



- 91 ★★ 1922, 10¢ Franklin, orange yellow, unwatermarked, horizontal rotary press coil (Scott 497), a perfectly centered gem pair, o.g., never hinged, Superb.
 Scott \$85
 Estimate \$150 - 200
 Unsold



- 92 ○ 1917, 2¢ Washington, rose, type I, perf 11 (Scott 499), a used gem, with magnificent centering and a neat light cancel, Extremely Fine to Superb; with encapsulated P.S.E. certificate graded **XF-SUP 95**.
 SMQ \$75
 Estimate \$50 - 75
 Hammer Price \$50



- 95 ★ 1919, 13¢ Franklin, apple green, perf 11 (Scott 513), phenomenally well centered within jumbo margins, o.g., very lightly hinged, Extremely Fine to Superb; with 2006 P.S.E. certificate graded **XF-SUP 95J**.
 SMQ \$60
 Estimate \$40 - 60
 Hammer Price \$160



- 93 ★★ 1917, 3¢ Washington, light violet, type I, perf 11 (Scott 501), a lovely gem with exquisite centering, flawless o.g., never hinged, Extremely Fine to Superb; with 2012 P.S.E. certificate graded **XF-SUP 95**.
 SMQ \$150
 Estimate \$100 - 150
 Hammer Price \$170



- 96 ★★ 1918, 2¢ Washington, carmine rose, type IV, offset printing, imperf (Scott 532), top margin single, with jumbo margins, o.g., never hinged, Extremely Fine; with 2022 P.S.E. certificate graded **XF 90**.
 Scott \$80
 SMQ \$100
 Estimate \$75 - 100
 Hammer Price \$60



- 94 ★★ 1917, 11¢ Franklin, light green, perf 11 (Scott 511), an exceptionally choice beauty with near perfect centering, pristine o.g., never hinged, Extremely Fine to Superb; with 2013 P.S.E. certificate graded **XF-SUP 95**.
 SMQ \$150
 Estimate \$100 - 150
 Hammer Price \$150



- 97 ★田 1919, 1¢ Washington, rotary press coil waste, vertical pair, imperf horizontally (Scott 538a), a well centered block of 4, o.g., very lightly hinged, Very Fine.
 Scott \$130
 Estimate \$75 - 100
 Hammer Price \$90

1920-1929 Issues



98 ★★ 1920, 5¢ Pilgrim (Scott 550), plate number single, near perfect centering within jumbo margins, o.g., never hinged, Extremely Fine and choice; with 2016 P.S.E. certificate graded **XF 90J**.

Scott \$70
SMQ \$200
Estimate \$150 - 200
Hammer Price \$200



99 ★★ 1923, 1¢ Franklin (Scott 552), a phenomenally well centered gem, o.g., never hinged, Extremely Fine to Superb; with 2007 P.S.E. certificate graded **XF-SUP 95J**.

SMQ \$140
Estimate \$80 - 120
Hammer Price \$160



100 ★★ 1925, 1 1/2¢ Harding (Scott 553), wonderfully well centered, o.g., never hinged, Extremely Fine to Superb; with 2007 P.S.E. certificate graded **XF-SUP 95**.

SMQ \$95
Estimate \$75 - 100
Hammer Price \$130



101 ★★ 1923, 2¢ Washington (Scott 554), extraordinarily well centered, with bright fresh color, o.g., never hinged, Extremely Fine to Superb; with 2007 P.S.E. certificate graded **XF-SUP 95**.

SMQ \$65
Estimate \$40 - 60
Hammer Price \$100



102 ★★ 1923, 7¢ McKinley (Scott 559), a spectacularly well centered gem, o.g., never hinged, Superb.

Estimate \$100 - 150
Hammer Price \$100



103 ★★田 1923, 9¢ Jefferson (Scott 561), an exceptionally choice block of 6, with dazzling color and gorgeous centering, o.g., never hinged, Extremely Fine.

Scott \$375
Estimate \$300 - 400
Hammer Price \$375



- 104 ★ 1923, 12¢ Grover Cleveland (Scott 564), perfectly centered, o.g., very lightly hinged, Superb; with 2015 P.S.E. certificate graded **SUP 98**.

SMQ \$35
 Estimate \$30 - 40
 Hammer Price \$26



- 105 ★★ 1923, 14¢ American Indian (Scott 565), beautifully fresh and well centered, pristine o.g., never hinged, Extremely Fine.

Estimate \$40 - 60
 Hammer Price \$40



- 106 ★★ 1922, 15¢ Statue of Liberty (Scott 566), a gem, just about perfect in every respect and with oversized margins, pristine o.g., never hinged, Superb.

Scott \$35
 Estimate \$150 - 200
 Hammer Price \$190



- 107 ★★田 1922, 15¢ Statue of Liberty (Scott 566), block of 4 with plate number, wonderfully well centered throughout, o.g., never hinged, Extremely Fine to Superb.

Scott \$140
 Estimate \$150 - 200
 Hammer Price \$180



- 108 ★★田 1922, 15¢ Statue of Liberty (Scott 566), a premium quality plate block of 6, beautifully well centered and very fresh, o.g., never hinged, Very Fine.

Scott \$400
 Estimate \$150 - 200
 Hammer Price \$275



- 109 ★★ 1922, 25¢ Niagara Falls (Scott 568), superlative centering, o.g., never hinged, Extremely Fine.
 Scott \$30
 Estimate \$30 - 40
 Hammer Price \$30



- 112 ★★ 1923, \$5 America (Scott 573), a wonderfully choice example of this high value, the centering is essentially perfect, o.g., never hinged, Extremely Fine to Superb; with 2020 P.S.E. certificate graded **XF-SUP 95**.
 Scott \$180
 SMQ \$450
 Estimate \$300 - 400
 Hammer Price \$225



- 110 ★ 1922, 50¢ Arlington Amphitheater (Scott 570), a perfectly centered gem, o.g., minimally hinged, Superb; with 2016 P.S.E. certificate graded **SUP 98**.
 SMQ \$160
 Estimate \$100 - 150
 Hammer Price \$100



- 113 ★★田 1923, 1¢ Franklin, imperf (Scott 575), a magnificent jumbo margins bottom plate block of 6, o.g., never hinged, Extremely Fine, *very first issued plate number*.
 Scott \$115
 Estimate \$75 - 100
 Hammer Price \$110



- 111 ★★田 1923, \$1 Lincoln Memorial (Scott 571), block of 4, beautifully well centered throughout, o.g., never hinged (couple minor gum bends and skips), Extremely Fine.
 Scott \$300
 Estimate \$150 - 200
 Unsold



- 114 ★★ 1923, 2¢ Washington, imperf (Scott 577), a marvelous gem with parts of all 8 surrounding stamps, o.g., never hinged, Superb; with 2008 P.S.E. certificate graded **Gem 100J**.
 Estimate \$80 - 120
 Hammer Price \$80

Not priced by SMQ as a Gem 100J. SMQ for a plain 100 is \$90.



- 115 ★ 1926, 7¢ McKinley, rotary press printing, perf 10 (Scott 588), near perfect centering within jumbo margins, o.g., lightly hinged (gum skip), Extremely Fine to Superb. Scott \$13
Estimate \$40 - 60
Unsold



- 118 ★ 1923, 2¢ Harding, flat plate printing (Scott 610), a magnificent gem for the most demanding connoisseur, this is truly the finest quality possible, o.g., hinged, Superb; with 2014 P.S.A.G. certificate graded **Gem 100J**.
Estimate \$100 - 150
Hammer Price \$225

SMQ is \$120 for plain GEM 100.



- 116 ★★ 1923, 1¢ Franklin, horizontal rotary press coil (Scott 597), a lovely pair, beautifully well centered, o.g., never hinged, Extremely Fine; with 2009 P.S.E. certificate graded **XF 90**.
SMQ \$40
Estimate \$30 - 40
Hammer Price \$24



- 119 ★★ 1925, 2¢ Lexington-Concord (Scott 618), perfect in every respect, o.g., never hinged, Superb; with 2008 P.S.A.G. certificate graded **SUP 98**.
SMQ \$150
Estimate \$100 - 150
Hammer Price \$120



- 117 ★★ 1929, 2¢ Washington, type II, horizontal rotary press coil (Scott 599A), an outstandingly choice pair, with superlative centering and radiant color, o.g., never hinged, Very Fine to Extremely Fine; with 2006 P.S.E. certificate graded **VF-XF 85**.
Scott \$500
SMQ \$500
Estimate \$350 - 500
Hammer Price \$325



- 120 ★ 1925, 5¢ Lexington-Concord (Scott 619), a world-class used gem, phenomenally well centered and with a neat duplex cancel, Superb. Top of the Pop! Highest graded by PSE. A true condition rarity; with 2015 P.S.E. certificate graded **SUP 98**.
SMQ \$450
Estimate \$300 - 400
Hammer Price \$325



- 121 ★★ 1925, 5¢ Lexington-Concord (Scott 619), a magnificent top margin single, o.g., never hinged, Extremely Fine to Superb; with 2011 P.F. certificate graded **XF-SUP 95**. SMQ \$120
 Estimate \$80 - 120
 Hammer Price \$80



- 123 ★★ 1926, White Plains souvenir sheet (Scott 630), radiant color and wonderfully well centered for this, o.g., never hinged, Very Fine.
 Scott \$500
 Estimate \$250 - 350
 Hammer Price \$200



- 122 ★★ 1926, 13¢ Harrison (Scott 622), beautifully well centered within boardwalk margins, o.g., never hinged; with natural gum skips, an Extremely Fine jumbo; with 2021 P.S.E. certificate graded **XF 90J**.
 Scott \$19
 SMQ \$50
 Estimate \$35 - 50
 Hammer Price \$60



- 124 ★★ 1927, 1¢ Franklin, rotary press printing (Scott 632), gorgeous centering, o.g., never hinged, Extremely Fine; with 2022 P.S.E. certificate graded **XF 90**.
 Estimate \$30 - 40
 Hammer Price \$22



- 125 ★★ 1927, 4¢ Martha Washington, rotary press printing (Scott 636), fantastically well centered, o.g., never hinged, Superb; with 2022 P.S.E. certificate graded **SUP 98**.
 SMQ \$215
 Estimate \$150 - 200
 Hammer Price \$275



126 ★ 1927, 2¢ Burgoyne (Scott 644), majestic centering, o.g., lightly hinged twice, Superb; with 2022 P.S.E. certificate graded **SUP 98**.

SMQ \$40
Estimate \$30 - 40
Hammer Price \$55



130 ★★ 1929, 4¢ Kans. (Scott 662), a real beauty with near perfect centering, o.g., never hinged, Extremely Fine to Superb.

Scott \$35
Estimate \$40 - 60
Unsold



127 ★★ 1928, 2¢ Hawaii (Scott 647), extraordinarily well centered, o.g., never hinged, Extremely Fine to Superb; with 2022 P.S.E. certificate graded **XF-SUP 95**.

SMQ \$85
Estimate \$60 - 80
Hammer Price \$90



131 ★★ 1929, 6¢ Kans. (Scott 664), wonderfully well centered and exceptionally choice, o.g., never hinged, Extremely Fine to Superb; with 2022 P.S.E. certificate graded **XF-SUP 95**.

SMQ \$375
Estimate \$250 - 350
Hammer Price \$300



128 ★★ 1929, 2¢ Edison, flat plate printing (Scott 654), marvelously well centered, o.g., never hinged, Extremely Fine to Superb; with 2022 P.S.E. certificate graded **XF-SUP 95**.

SMQ \$45
Estimate \$30 - 40
Hammer Price \$75



132 ★★ 1929, 10¢ Kans. (Scott 668), extraordinarily well centered, o.g., never hinged, Extremely Fine; with 2022 P.S.E. certificate graded **XF 90**, plus ungraded 1981 P.F. certificate.

Scott \$45
SMQ \$90
Estimate \$60 - 80
Hammer Price \$75



129 ★★ 1929, 2¢ Edison, rotary press printing (Scott 655), extraordinarily well centered, o.g., never hinged, Extremely Fine to Superb; with 2022 P.S.E. certificate graded **XF-SUP 95**.

SMQ \$50
Estimate \$35 - 50
Hammer Price \$75



133 ★ 1929, 6¢ Nebr. (Scott 675), wonderfully well centered, o.g., invisibly hinged (appears never hinged), Extremely Fine to Superb; with 2022 P.S.E. certificate graded **XF-SUP 95**.

SMQ \$170
Estimate \$100 - 150
Hammer Price \$180



- 134 ★★ 1929, 10¢ Nebr. (Scott 679), a fantastically well centered gem, o.g., never hinged, Superb; with 2010 P.S.A.G. certificate graded **SUP 98**.
 Scott \$180
 SMQ \$500
 Estimate \$300 - 400
 Hammer Price \$400

1930-1939 Issues



- 135 ★★ 1930, 4¢ Taft, rotary press printing (Scott 685), a gem with near perfect centering and bright fresh color, o.g., never hinged, Extremely Fine to Superb; with 2008 P.S.E. certificate graded XF-SUP 95.
 SMQ \$60
 Estimate \$40 - 60
 Hammer Price \$75



- 136 ★★田 1931, Rotary press definitives, 11¢ to 50¢ complete (Scott 692-701), blocks of 4, well centered throughout, o.g., never hinged, Very Fine or better.
 Scott \$549
 Estimate \$150 - 200
 Hammer Price \$140



- 137 ★★ 1931, 11¢ Hayes, rotary press printing (Scott 692), magnificent centering, o.g., never hinged, Extremely Fine to Superb; with 2022 P.S.E. certificate graded **XF-SUP 95**. SMQ \$95
 Estimate \$75 - 100
 Hammer Price \$100



- 140 ★★ 1932, 3¢ Washington Bicentennial (Scott 708), the finest possible quality and the finest graded example, o.g., never hinged, Superb; with 2022 P.S.E. certificate graded **Gem 100**.
 Estimate \$400 - 600
 Hammer Price \$600



- 138 ★★ 1931, 15¢ Statue of Liberty, rotary press printing (Scott 696), magnificent centering, o.g., never hinged, Superb; with 2022 P.S.E. certificate graded **SUP 98**. SMQ \$300
 Estimate \$200 - 300
 Hammer Price \$300

The certificate for this lot is extraordinary: the picture shows a 15¢, the text reads 15¢, but the Scott number is wrong - 694 instead of the actual 696. So we have a genuine error cert. Is it worth more as an error? Should we auction the cert separate from the stamp? At least they got the grade right. In case the comedy bothers you (typos happen), PSE routinely reissues corrected certs in cases of errors.



- 141 ★★ 1932, 5¢ Washington Bicentennial (Scott 710), amazingly well centered, o.g., never hinged, Extremely Fine to Superb; with 2022 P.S.E. certificate graded **XF-SUP 95**. SMQ \$40
 Estimate \$30 - 40
 Hammer Price \$70



- 139 ★★ 1931, 2¢ Red Cross (Scott 702), extraordinarily well centered within jumbo margins, o.g., never hinged, Extremely Fine to Superb; with 2022 P.S.E. certificate graded **XF-SUP 95J**. SMQ \$60
 Estimate \$40 - 60
 Hammer Price \$75



- 142 ★★ 1932, 3¢ Washington, rotary press printing, horizontal coil (Scott 721), extraordinarily well centered, o.g., never hinged, Extremely Fine to Superb; with 2022 P.S.E. certificate graded **XF-SUP 95**. SMQ \$80
 Estimate \$60 - 80
 Hammer Price \$65



- 143 ★★ 1933, 3¢ Washington's Headquarters (Scott 727), wonderfully well centered, o.g., never hinged, Extremely Fine to Superb; with 2022 P.S.E. certificate graded **XF-SUP 95**. SMQ \$85
 Estimate \$60 - 80
 Hammer Price \$90



- 146 ★★ 1933, 3¢ Byrd Antarctic (Scott 733), extraordinarily well centered, o.g., never hinged, Extremely Fine to Superb; with 2022 P.S.E. certificate graded **XF-SUP 95**. SMQ \$45
 Estimate \$30 - 40
 Hammer Price \$65



- 144 (★) 1933, 1¢ A.P.S. single (Scott 730a), eye-appealing single, without gum as issued, Superb; with 2015 P.S.E. certificate graded **Gem 100**.
 Scott \$50
 Estimate \$35 - 50
 Hammer Price \$90



- 147 ★★ 1934, 3¢ Maryland (Scott 736), wonderfully well centered within jumbo margins, o.g., never hinged, Extremely Fine; with 2022 P.S.E. certificate graded **XF 90J**.
 Estimate \$30 - 40
 Hammer Price \$50



- 145 ★★ 1933, 3¢ N.R.A. (Scott 732), perfect in every respect, o.g., never hinged, Superb; with 2022 P.S.E. certificate graded **SUP 98**. SMQ \$160
 Estimate \$120 - 150
 Hammer Price \$160



- 148 ★★ 1934, 5¢ Yellowstone National Park, perforated (Scott 744), gorgeous centering, o.g., never hinged, Extremely Fine to Superb; with 2010 P.F. certificate graded **XF-SUP 95**.
 Estimate \$30 - 40
 Unsold



- 149 ★★ 1934, 3¢ National Parks single (Scott 750a), corner margin single, pristine, o.g., never hinged, Superb, *only two graded at this lofty level and only 2 graded higher at 100J!*. SMQ \$50
 Estimate \$35 - 50
 Hammer Price \$50



- 151 (★) 1935, 16¢ Airmail Special Delivery, imperf (Scott 771), a wonderfully choice jumbo with parts of 8 surrounding stamps, without gum as issued, Superb; with 2021 P.S.E. certificate graded **Gem 100J**. SMQ \$110
 Estimate \$60 - 80
 Hammer Price \$60



- 150 (★) 1935, 1¢ Yosemite National Park, imperf (Scott 756), a magnificent plate number single, visually stunning, without gum as issued, Superb; with 2015 P.S.E. certificate graded **Gem 100J**. SMQ \$85
 Estimate \$75 - 100
 Hammer Price \$90

Not priced by SMQ as a Gem 100 J. SMQ for plain 100 is \$85.



- 152 ★★ 1936, 3¢ Texas (Scott 776), superlative centering, o.g., never hinged, Superb; with **encapsulated** P.S.E. certificate graded **SUP 98**. SMQ \$100
 Estimate \$60 - 80
 Hammer Price \$45



- 153 ★★ 1938, 4½¢ White House (Scott 809), a wonderfully choice White House, o.g., never hinged, Superb; with 2011 P.S.E. certificate graded **SUP 98**. SMQ \$65
 Estimate \$40 - 60
 Hammer Price \$60



- 154 ★★ 1938, 5¢ Monroe (Scott 810), fantastic one-in-a-million centering, o.g., never hinged, a Superb gem; with 2022 P.S.A.G. certificate graded **Gem 100**.
 SMQ \$250
 Estimate \$150 - 200
 Hammer Price \$140



- 157 ★★ 1938, 17¢ Andrew Johnson (Scott 822), o.g., never hinged, Extremely Fine to Superb; with 2022 P.F. certificate graded **XF-SUP 95**.
 SMQ \$30
 Estimate \$30 - 40
 Hammer Price \$26



- 155 ★★ 1938, 7¢ Jackson (Scott 812), sheet margin single, wonderfully well centered, o.g., never hinged, Superb; with 2006 P.S.E. certificate graded **SUP 98**, only 2 grade higher! .
 SMQ \$105
 Estimate \$75 - 100
 Hammer Price \$90



- 156 ★★ 1938, 17¢ Andrew Johnson (Scott 822), a gem for the most demanding connoisseur, o.g., never hinged, Superb; with 2007 P.S.E. certificate graded **SUP 98**, only five grade higher.
 SMQ \$95
 Estimate \$60 - 80
 Hammer Price \$110

- 158 ★★田 1938, \$2 Harding and \$5 Coolidge (Scott 833-834), centerline blocks of 4, well centered, o.g., never hinged, Very Fine. Scott \$430
 Estimate \$200 - 300
 Hammer Price \$150



159 ★★ 1939, 3¢ Jefferson, horizontal coil (Scott 842), a beautiful line pair, exceptionally well centered, o.g., never hinged, Extremely Fine to Superb; with 2019 P.S.E. certificate graded **XF-SUP 95**.
 SMQ \$150
 Estimate \$100 - 150
 Hammer Price \$75



160 ★★ 1939, 4¢ Madison, horizontal coil (Scott 843), spectacularly well centered, o.g., never hinged, Superb; with 2007 P.S.E. certificate graded **SUP 98**.
 SMQ \$225
 Estimate \$150 - 200
 Hammer Price \$110



161 ★★ 1939, 3¢ Baseball Centennial (Scott 855), a magnificent world-class example of a very popular issue, o.g., never hinged, Superb; with 2022 P.S.E. certificate graded **Gem 100**. SMQ \$250
 Estimate \$150 - 250
 Hammer Price \$250

1940 Famous Americans Issue



162 ★★ 1940, Famous Americans complete (Scott 859-893), a magnificent complete set, all with outstandingly choice centering, o.g., never hinged, Extremely Fine to Superb or better; each with **encapsulated** P.S.E. certificate graded **XF-SUP 95** or **SUP 98**.
 SMQ \$1,750
 Estimate \$1,000 - 1,500
 Hammer Price \$950



163 ★★ 1940, 5¢ Alcott (Scott 862), perfectly centered, o.g., never hinged, Superb; with 2007 P.S.E. certificate graded **SUP 98**.
 SMQ \$50
 Estimate \$35 - 50
 Hammer Price \$45



164 ★★ 1940, 2¢ Whittier (Scott 865), perfect in every respect, o.g., never hinged, Superb; with 2022 P.S.E. certificate graded **SUP 98**.

SMQ \$55
Estimate \$35 - 50
Hammer Price \$50



167 ★★ 1940, 10¢ Frederic Remington (Scott 888), perfect in every respect, o.g., never hinged, Superb; with 2007 P.S.E. certificate graded **SUP 98**.

SMQ \$50
Estimate \$35 - 50
Hammer Price \$55



165 ★★ 1940, 10¢ Jane Addams (Scott 878), perfect in every respect, o.g., never hinged, Superb; with 2007 P.S.E. certificate graded **SUP 98**.

SMQ \$45
Estimate \$30 - 40
Hammer Price \$45



168 ★★ 1940, 5¢ Elias Howe (Scott 892), a gem, perfect in every respect, o.g., never hinged, Superb.

Estimate \$35 - 50
Hammer Price \$45



166 ★★ 1940, 1¢ Gilbert Stuart (Scott 884), perfectly centered, o.g., never hinged, Superb; with 2007 P.S.E. certificate graded **SUP 98**.

SMQ \$50
Estimate \$35 - 50
Hammer Price \$50



169 ★★ 1940, 5¢ Elias Howe (Scott 892), perfectly centered, o.g., never hinged, Superb; with 2007 P.S.E. certificate graded **SUP 98**.

SMQ \$50
Estimate \$35 - 50
Hammer Price \$50



170 ★★ 1940, 10¢ Alexander Graham Bell (Scott 893), perfect in every respect, o.g., never hinged, Superb; with 2007 P.S.E. certificate graded **SUP 98**.

SMQ \$65
Estimate \$40 - 60
Hammer Price \$55

1942-1949 Issues



- 171 ★★ 1942, 3¢ Win the War (Scott 905), almost perfectly centered, o.g., never hinged, Extremely Fine to Superb; with 2022 P.S.E. certificate graded **XF-SUP 95**. SMQ \$45
 Estimate \$30 - 40
 Hammer Price \$65



- 172 ★★ 1943, 1¢ Four Freedoms (Scott 908), extraordinarily well centered, o.g., never hinged, Extremely Fine to Superb; with 2022 P.S.E. certificate graded **XF-SUP 95**. SMQ \$50
 Estimate \$35 - 50
 Hammer Price \$45



- 173 ★★ 1943-44, Overrun Countries complete (Scott 909-921), a magnificent quality set, o.g., never hinged, mostly Superb; each with **encapsulated** P.S.E. certificate graded **Gem 100**, except Greece is **XF-SUP 95**. SMQ \$1,645
 Estimate \$1,000 - 1,500
 Unsold



- 174 ★★ 1946, 5¢ Franklin D. Roosevelt (Scott 933), wonderful one-in-a-million quality, o.g., never hinged, a Superb gem; with 2022 P.S.A.G. certificate graded **Gem 100**. SMQ \$185
 Estimate \$120 - 150
 Hammer Price \$90



- 175 ★★ 1946, 3¢ Kearny Expedition (Scott 944), perfect in every respect, o.g., never hinged, Superb; with 2022 P.S.E. certificate graded **SUP 98**.
 SMQ \$55
 Estimate \$35 - 50
 Hammer Price \$50



- 178 ★★ 1949, 3¢ Puerto Rico Election (Scott 983), a marvelous gem for the most demanding connoisseur, o.g., never hinged, Superb; with 2012 P.S.E. certificate graded **Gem 100**.
 SMQ \$130
 Estimate \$80 - 120
 Hammer Price \$120



- 176 ★★ 1947, 3¢ Joseph Pulitzer (Scott 946), a one-in-a-million gem, perfect in every respect, o.g., never hinged, Superb; with 2013 P.S.E. certificate graded **Gem 100**.
 SMQ \$160
 Estimate \$120 - 150
 Hammer Price \$110



- 179 ★★ 1949, 3¢ Grand Army of the Republic (Scott 985), a perfectly centered beauty, o.g., never hinged, Superb; with 2007 P.S.E. certificate graded **SUP 98**.
 SMQ \$60
 Estimate \$40 - 60
 Hammer Price \$65



- 177 ★★ 1949, 3¢ Minnesota Territory (Scott 981), perfect in every respect, o.g., never hinged, Superb; with 2022 P.S.E. certificate graded **SUP 98**.
 SMQ \$60
 Estimate \$40 - 60
 Hammer Price \$55

1950-1953 Issues



180 ★★ 1950, 3¢ American Bankers Association (Scott 987), a magnificent gem, perfect in every respect, o.g., never hinged, Superb; with 2007 P.S.E. certificate graded **Gem 100**. SMQ \$145
 Estimate \$100 - 150
 Hammer Price \$130



181 ★★ 1950, 3¢ National Capital: Capitol (Scott 992), truly fantastic one-in-a-million centering, o.g., never hinged, a Superb gem; with 2022 P.S.A.G. certificate graded **Gem 100**. SMQ \$215
 Estimate \$120 - 180
 Hammer Price \$190



182 ★★ 1950, 3¢ Kansas City (Scott 994), marvelous centering, the quality is as good it gets, o.g., never hinged, a Superb gem. Top of the Pop - the highest list grade by SMQ; with 2022 P.S.A.G. certificate graded **Gem 100**. SMQ \$220
 Estimate \$150 - 200
 Hammer Price \$150



183 ★★ 1951, 3¢ American Chemical Society (Scott 1002), perfect in every respect, o.g., never hinged, Superb; with 2021 P.S.A.G. certificate graded **SUP 98**. SMQ \$55
 Estimate \$35 - 50
 Hammer Price \$35



184 ★★ 1952, 3¢ Women in Armed Services (Scott 1013), the ladies are in perfect form, o.g., never hinged, a Superb gem; with 2022 P.S.A.G. certificate graded **Gem 100**. SMQ \$200
 Estimate \$120 - 180
 Hammer Price \$90

Top of the Pop - highest grade listed by SMQ.



185 ★★ 1952, 3¢ Red Cross (Scott 1016), phenomenally well centered, o.g., never hinged, Superb; with 2014 P.S.E. certificate graded **Gem 100**. SMQ \$150
 Estimate \$120 - 150
 Hammer Price \$100



- 186 ★★ 1953, 5¢ Opening of Japan Centennial (Scott 1021), superlative centering, o.g., never hinged, Superb; with 2014 P.S.E. certificate graded **SUP 98**.
 SMQ \$65
 Estimate \$40 - 60
 Hammer Price \$60



- 187 ★★ 1953, 3¢ Gadsden Purchase (Scott 1028), one-in-a-million centering and quality, o.g., never hinged, a Superb gem; with 2049 P.S.A.G. certificate graded **Gem 100**.
 Estimate \$150 - 200
 Hammer Price \$120

Unlisted by SMQ in this grade - as good as this issue gets.

1954 Liberty Issue



- 188 ★★ 1955, 1/2¢ Franklin, wet printing (Scott 1030), gorgeous centering, o.g., never hinged, Extremely Fine to Superb; with 2022 P.S.E. certificate graded **XF-SUP 95**.
 SMQ \$50
 Estimate \$40 - 60
 Hammer Price \$50



- 189 ★★ 1956, 1¢ Washington, dry printing (Scott 1031b), exceptionally well centered, o.g., never hinged, Extremely Fine to Superb; with 2022 P.S.E. certificate graded **XF-SUP 95**.
 SMQ \$35
 Estimate \$30 - 40
 Hammer Price \$28



- 190 ★★ 1954, 2¢ Jefferson, experimental Silkote paper (Scott 1033a), exceptionally choice with near perfect centering, o.g., never hinged, Extremely Fine; with 2005 P.S.E. certificate graded **XF 90**.
 Scott \$275
 SMQ \$450
 Estimate \$300 - 400
 Unsold



191 ★★ 1954, 3¢ Statue of Liberty, wet printing (Scott 1035), a perfectly centered gem, o.g., never hinged, Superb; with 2022 P.S.E. certificate graded **SUP 98**.
 SMQ \$115
 Estimate \$75 - 100
 Hammer Price \$60



194 ★★ 1963, 4¢ Lincoln, tagged (Scott 1036e), outstandingly well centered, o.g., never hinged, Extremely Fine to Superb; with 2022 P.S.E. certificate graded **XF-SUP 95**.
 SMQ \$50
 Estimate \$35 - 50
 Unsold



192 ★★ 1954, 4¢ Lincoln, wet printing (Scott 1036), a fantastically choice plate number single, with one-in-a-million centering and quality, o.g., never hinged, a Superb gem; with 2022 P.S.A.G. certificate graded **Gem 100**.
 SMQ \$400
 Estimate \$250 - 350
 Unsold



195 ★★ 1959, 4½¢ Hermitage (Scott 1037), superlative centering, o.g., never hinged, Extremely Fine to Superb; with 2022 P.S.E. certificate graded **XF-SUP 95**.
 SMQ \$40
 Estimate \$30 - 40
 Hammer Price \$45

Top of the Pop - highest grade listed by SMQ.



193 ★★ 1954, 4¢ Lincoln, dry printing (Scott 1036a), flawless centering, o.g., never hinged, Superb; with 2022 P.S.E. certificate graded **SUP 98**.
 SMQ \$115
 Estimate \$75 - 100
 Hammer Price \$75



196 ★★ 1954, 5¢ Monroe (Scott 1038), a wonderfully choice gem, perfect in every respect, o.g., never hinged, Superb; with 2022 P.S.E. certificate graded **SUP 98**.
 SMQ \$115
 Estimate \$75 - 100
 Unsold



197 ★★ 1956, 7¢ Wilson (Scott 1040), a perfectly centered gem, o.g., never hinged, Superb; with 2022 P.F. certificate graded **SUP 98**.

SMQ \$135
 Estimate \$80 - 120
 Hammer Price \$100



200 ★★ 1958, 15¢ John Jay (Scott 1046), extraordinarily well centered, o.g., never hinged, Extremely Fine to Superb; with 2022 P.S.E. certificate graded **XF-SUP 95**.

SMQ \$30
 Estimate \$30 - 40
 Hammer Price \$28



198 ★★ 1956, 9¢ Alamo (Scott 1043), extraordinarily well centered, o.g., never hinged, Extremely Fine to Superb; with 2022 P.S.E. certificate graded **XF-SUP 95**.

SMQ \$35
 Estimate \$30 - 40
 Unsold



201 ★★ 1958, 25¢ Paul Revere (Scott 1048), a perfectly centered beauty, o.g., never hinged, Superb; with 2022 P.S.E. certificate graded **SUP 98**.

SMQ \$175
 Estimate \$120 - 150
 Hammer Price \$130



199 ★★ 1959, 12¢ Harrison (Scott 1045), a flawless gem, perfect in every respect, o.g., never hinged, Superb; with 2022 P.S.E. certificate graded **SUP 98**.

SMQ \$160
 Estimate \$120 - 150
 Hammer Price \$130



202 ★★ 1957, 30¢ Robert E. Lee, dry printing (Scott 1049a), an outstandingly choice plate number single, o.g., never hinged, Extremely Fine to Superb; with 2022 P.S.E. certificate graded **XF-SUP 95**.

SMQ \$35
 Estimate \$30 - 40
 Hammer Price \$24



203 ★★ 1958, 40¢ Marshall, dry printing (Scott 1050a), perfect in every respect, o.g., never hinged, Superb; with 2022 P.S.E. certificate graded **SUP 98**.
 SMQ \$150
 Estimate \$100 - 150
 Hammer Price \$120



206 ★★ 1956, \$5 Hamilton (Scott 1053), an outstandingly choice example of this high value, with mathematically perfect centering, o.g., never hinged, Superb; with 2021 P.S.E. certificate graded **SUP 98**.
 SMQ \$200
 Estimate \$120 - 180
 Hammer Price \$130



204 ★★ 1955, 50¢ Susan B. Anthony, wet printing (Scott 1051), wonderfully well centered, o.g., never hinged, Extremely Fine to Superb; with 2022 P.S.E. certificate graded **XF-SUP 95**. SMQ \$40
 Estimate \$30 - 40
 Unsold



207 ★★田 1956, \$5 Hamilton (Scott 1053), a flawless plate block of 4, o.g., never hinged, Extremely Fine.
 Scott \$210
 Estimate \$100 - 150
 Unsold



205 ★★ 1958, 50¢ Susan B. Anthony, dry printing (Scott 1051a), a flawless gem for the most demanding connoisseur, o.g., never hinged, Superb; with 2022 P.S.E. certificate graded **SUP 98**.
 SMQ \$210
 Estimate \$150 - 200
 Unsold



208 ★★田 1956, \$5 Hamilton (Scott 1053), plate block of 4, o.g., never hinged, Very Fine.
 Scott \$210
 Estimate \$75 - 100
 Hammer Price \$55



- 209 ★★ 1960, 1 1/4¢ Santa Fe, vertical coil, small perf holes (Scott 1054A), extraordinarily well centered, o.g., never hinged, Extremely Fine to Superb; with 2022 P.S.E. certificate graded **XF-SUP 95**.
 SMQ \$35
 Estimate \$30 - 40
 Unsold



- 212 ★★ 1968, 2¢ Jefferson, horizontal coil, large perf holes, dry printing (Scott 1055a), a perfectly centered pair, o.g., never hinged, Superb; with 2022 P.S.E. certificate graded **SUP 98**. SMQ \$75
 Estimate \$50 - 75
 Hammer Price \$40



- 210 ★★ 1960, 1 1/4¢ Santa Fe, vertical coil, small perf holes (Scott 1054A), a magnificent pair, with mathematically perfect centering, o.g., never hinged, Superb; with 2022 P.S.E. certificate graded **SUP 98**.
 SMQ \$130
 Estimate \$80 - 120
 Hammer Price \$75



- 213 ★★ 1959, 2 1/2¢ Bunker Hill, horizontal coil, large perf holes (Scott 1056), outstandingly well centered, o.g., never hinged, Extremely Fine to Superb; with 2022 P.S.E. certificate graded **XF-SUP 95**.
 SMQ \$35
 Estimate \$30 - 40
 Hammer Price \$24



- 211 ★★ 1968, 2¢ Jefferson, horizontal coil, large perf holes, dry printing (Scott 1055a), perfect in every respect, o.g., never hinged, Superb; with 2023 P.S.E. certificate graded **SUP 98**. SMQ \$40
 Estimate \$30 - 40
 Hammer Price \$40



- 214 ★★ 1956, 3¢ Statue of Liberty, horizontal coil, large perf holes, dry printing (Scott 1057a), a one-in-a-million gem for the most demanding connoisseur, o.g., never hinged, Superb; with 2022 P.S.E. certificate graded **Gem 100**. SMQ \$200
 Estimate \$150 - 200
 Hammer Price \$150



- 215 ★★ 1958, 4¢ Lincoln, horizontal coil, large perf holes, dry printing (Scott 1058), a wonderfully choice pair, with mathematically perfect centering, o.g., never hinged, Superb; with 2022 P.S.E. certificate graded **SUP 98**.
 SMQ \$135
 Estimate \$80 - 120
 Hammer Price \$60



- 216 ★★ 1959, 4½¢ Hermitage, vertical coil, large perf holes (Scott 1059), exceptionally well centered, o.g., never hinged, Extremely Fine to Superb; with 2022 P.S.E. certificate graded **XF-SUP 95**.
 SMQ \$40
 Estimate \$30 - 40
 Hammer Price \$45



- 217 ★★ 1959, 4½¢ Hermitage, vertical coil, large perf holes (Scott 1059), a gorgeous pair, exceptionally well centered, o.g., never hinged, Extremely Fine; with 2022 P.S.E. certificate graded **XF 90**.
 SMQ \$35
 Estimate \$30 - 40
 Hammer Price \$24

1954-1979 Issues



- 218 ★★ 1954, 3¢ Kansas Territory (Scott 1061), magnificent centering, o.g., never hinged, Superb; with 2014 P.S.E. certificate graded **SUP 98**.
 SMQ \$60
 Estimate \$40 - 60
 Hammer Price \$45



- 219 ★★ 1954, 3¢ Lewis & Clark Expedition (Scott 1063), fantastic one-in-a-million centering, o.g., never hinged, a Superb gem; with 2022 P.S.A.G. certificate graded **Gem 100**.
 SMQ \$160
 Estimate \$100 - 150
 Hammer Price \$80

Top of the Pop - the highest grade listed by SMQ.



- 220 ★★ 1956, 3¢ Wildlife Conservation: Turkey (Scott 1077), extraordinarily choice centering that is as good as this issue gets, o.g., never hinged, a Superb gem; with 2022 P.S.A.G. certificate graded **Gem 100**.
 SMQ \$165
 Estimate \$100 - 150
 Hammer Price \$75

Top of the Pop - highest grade listed by SMQ.



- 221 ★★ 1957, 3¢ International Naval Review (Scott 1091), a wonderfully choice gem, perfect in every respect, o.g., never hinged, Superb; with 2014 P.S.E. certificate graded **Gem 100**. SMQ \$165
 Estimate \$120 - 150
 Hammer Price \$110



- 222 ★★ 1957, 3¢ International Naval Review (Scott 1091), superlative centering, o.g., never hinged, Superb; with 2016 P.S.E. certificate graded **SUP 98**. SMQ \$55
 Estimate \$35 - 50
 Hammer Price \$45



- 223 ★★ 1957, 3¢ Teachers (Scott 1093), a wonderfully choice gem for the most demanding connoisseur, o.g., never hinged, Superb; with 2014 P.S.E. certificate graded **Gem 100**. SMQ \$160
 Estimate \$120 - 150
 Hammer Price \$120



- 224 ★★ 1957, 3¢ Religious Freedom (Scott 1099), phenomenally well centered, o.g., never hinged, Superb; with 2014 P.S.E. certificate graded **Gem 100**. SMQ \$150
 Estimate \$100 - 150
 Unsold



- 225 ★★ 1958, 3¢ Gardening (Scott 1100), a phenomenally well centered gem, o.g., never hinged, Superb; with 2012 P.S.E. certificate graded **Gem 100**. SMQ \$160
 Estimate \$120 - 150
 Unsold



- 226 ★★ 1958, 3¢ James Monroe (Scott 1105), the phenomenal quality is as good as it gets, o.g., never hinged, Superb; with 2022 P.S.E. certificate graded **Gem 100**. SMQ \$200
 Estimate \$150 - 200
 Unsold



227 ★★ 1959, 4¢ Arctic Explorations (Scott 1128), a perfectly centered gem, o.g., never hinged, Superb; with 2016 P.S.E. certificate graded **SUP 98**.
 SMQ \$60
 Estimate \$40 - 60
 Hammer Price \$40



230 ★★ 1960, 4¢ Robert Taft (Scott 1161), absolutely magnificent quality, o.g., never hinged, Superb; with 2014 P.S.E. certificate graded **Gem 100**.
 SMQ \$225
 Estimate \$150 - 200
 Unsold



228 ★★ 1959, 4¢ Petroleum Industry (Scott 1134), the epitome of perfection, o.g., never hinged, Superb; with 2022 P.S.E. certificate graded **Gem 100**.
 SMQ \$160
 Estimate \$120 - 150
 Unsold



231 ★★ 1960, 4¢ Andrew Carnegie (Scott 1171), philatelic perfection, o.g., never hinged, Superb; with 2014 P.S.E. certificate graded **Gem 100**.
 SMQ \$180
 Estimate \$120 - 150
 Hammer Price \$130



229 ★★ 1960, 4¢ World Forestry Congress (Scott 1156), phenomenally choice and incredibly well centered, o.g., never hinged, Superb; with 2022 P.S.E. certificate graded **Gem 100**.
 SMQ \$200
 Estimate \$150 - 200
 Hammer Price \$150



232 ★★ 1961, 4¢ George Norris (Scott 1184), o.g., never hinged, Superb; with 2014 P.S.E. certificate graded **Gem 100**.
 SMQ \$180
 Estimate \$120 - 180
 Hammer Price \$130



- 233 ★★ 1961, 4¢ Naismith - Basketball (Scott 1189), world-class quality, o.g., never hinged, Superb; with 2014 P.S.E. certificate graded **Gem 100**.
 SMQ \$170
 Estimate \$120 - 150
 Hammer Price \$130



- 234 ★★ 1962, 4¢ Project Mercury (Scott 1193), heavenly quality and celestial centering, o.g., never hinged, Superb; with 2014 P.S.E. certificate graded **Gem 100**.
 SMQ \$165
 Estimate \$120 - 150
 Unsold



- 235 ★★ 1962, 4¢ Homestead Act (Scott 1198), perfect in every respect and phenomenally choice, o.g., never hinged, Superb; with 2022 P.S.E. certificate graded **Gem 100**.
 SMQ \$175
 Estimate \$120 - 150
 Unsold



- 236 ★★ 1962, 4¢ Brien McMahon (Scott 1200), perfect in every respect and as good as this issue gets, o.g., never hinged, Superb; with 2014 P.S.E. certificate graded **Gem 100**.

SMQ \$160
 Estimate \$120 - 150
 Hammer Price \$120



- 237 ★★ 1979, \$1 Rush Lamp, brown (engraved) omitted (Scott 1610a), a flawless gem example of this scarce error, o.g., never hinged, Superb; with 2002 P.S.E. certificate graded **SUP 98**. Scott \$175
 Estimate \$250 - 350
 Unsold

High Grade Groups



238 ○ 1857-1920, used selection, all premium quality, V.F. to X.F., 56 all different, all inexpensive (catalog values range from a few cents to at most \$70), but all with outstandingly choice centering and mostly neat light cancels. We estimate that if these were sent to any of the major expertizing services for grading, they would grade from VF 80 to XF-SUP 95, with most coming in at XF 90. These "little gems" include:

- 1857 issue: #35;
- Banknotes: #146, 156, 161, 178, 179182, 188, 206, 207, 213;
- 1890's issues: #219, 219D, 221, 222, 234, 256, 264, 267, 271, 282C, 283, 284, 286, 290;
- 1901 issue: #302, 304, 305, 306, 307, 309, 319;
- Wash-Franklins etc: 331, 332, 334, 337, 370, 390, 397, 398, 401, 404, 410, 417, 421, 425, 428, 430, 435, 437, 466, 469, 483, 484, 531, 534, 547.

A marvelous lot for the collector of gem quality who wishes to fill in many of the less expensive spaces.

Scott \$593
 Estimate \$400 - 600
 Unsold

239 ★ 1911-17, 5 different Washington-Franklins, each with high quality graded certificate (Scott 377, 381, 415, 509, 513), o.g., hinged, Very Fine to Extremely Fine; each with 1021 P.F. certificate graded VF 80 (415), VF-XF 85 (381), VF 80 (415), XF 90 (509 & 513), and XF 90J (377).

SMQ \$295
 Estimate \$120 - 150
 Hammer Price \$130



240 ★★ 1926-57, group of 5 high-quality graded stamps (Scott 590//C11), including 1926, 9¢ Jefferson, rotary press printing, perf 10 (XF-90), 1939, 3¢ Washington Inauguration (XF-S 95), 1945, 3¢ Franklin D. Roosevelt (XF-S 95), 1957, 8¢ Champion of Liberty: Ramon Magsaysay (XF-S 95), Airmail, 1928, 5¢ Beacon (XF-90); all certificates are imaged on the website, o.g., never hinged, Extremely Fine; with 2009-2022 P.S.E. certificates graded XF 90 - XF-SUP 95.

SMQ \$143
 Estimate \$80 - 120
 Unsold



241 ★★ 1941-1968, graded extremely fine - superb group, 9 items including Scott #'s 1032, 1040, 1041, 1045, 1046, 1052a, 1055b, 1056 and C30 all graded "95" and certificates are imaged on the website; a lovely group of high quality stamps, o.g., never hinged, Extremely Fine to Superb; each with 2022 P.S.E. certificate graded **XF-SUP 95**.

SMQ \$295
Estimate \$200 - 300
Unsold



243 ★★ 1944-1965, graded extremely fine group, 8 stamps including 1030, 1031A, 1047a, 1055a, 1059Ab pair, 1057, 1229 and C26 all with certificates as seen on the website, a neat little group of nice stamps! o.g., never hinged, Extremely Fine; each with 2022 P.S.E. certificate graded **XF 90**.

SMQ \$150
Estimate \$100 - 150
Unsold



242 ★★ 1942-82, a premium P.S.E. graded group of 4 (Scott 900, 1027, 1181, 2404), each with 2019-2022 P.S.E. graded cert: #900 graded XF 90, #1027 graded XF-SUP 95, #1181 graded XF-SUP 95, #2404 graded XF-SUP 95 (no SMQ value), o.g., never hinged, Very Fine to superb.

SMQ \$73
Estimate \$50 - 75
Unsold



244 ★★ 1949-77, group of 4 graded commemorative stamps (Scott 981, 1020, 1160, 1710), including 1949, 3¢ Minnesota Territory (XF-Sup 95), 1953, 3¢ Louisiana Purchase (XF-Sup 95), 1960, 8¢ Champion of Liberty: Jan Paderewski (XF-Sup 95), and 1977, 13¢ Lindbergh Flight (XF 90), o.g., never hinged, Extremely Fine to Superb; with 2021, 2022 and 2017 P.S.E. certificates.

SMQ \$65
Estimate \$40 - 60
Unsold



245 ★★ 1951, 3¢ Nevada Centennial, and 2 other high-grade issues (Scott 999, 861, C32), Nevada is a block of 4 graded VF-XF 85, the 1940 3¢ William Allen White (#861) is graded VF-XF 85, and the C32 is graded XF 90 ("with a short perf at the right and a natural paper inclusion"), o.g., never hinged, Very Fine to Extremely Fine or better; each with 2021 P.S.E. graded certificate. SMQ \$55+ Estimate \$30 - 40 Unsold



246 ★★ Airmail, 1949-89, high graded group of 12 items (Scott C44//C124), included are C44, C55 (x2), C62 (x2), C63 (x2), C74, C84, C98, C120 and C124. A great opportunity to acquire some lesser valued items with graded certificates; SMQ is \$152 for just 9 of the lots with grades ranging from VF 80 to XF-Sup 95! o.g., never hinged; with 2022 P.S.E. certificates. Estimate \$150 - 200 Unsold

Airmail



- 247 ★★ Airmail, 1918, 16¢ Jenny (Scott C2), well centered, with flawless o.g., never hinged, Very Fine to Extremely Fine. Scott \$120
 Estimate \$80 - 120
 Hammer Price \$55



- 250 ★★ Airmail, 1928, 5¢ Beacon (Scott C11), a gem with near perfect centering, o.g., never hinged, Extremely Fine to Superb; with 2022 P.S.E. certificate graded **XF-SUP 95**. SMQ \$125
 Estimate \$80 - 120
 Hammer Price \$130



- 248 ★★ Airmail, 1923, 24¢ Biplane (Scott C6), phenomenally well centered, o.g., never hinged, Extremely Fine or better; with 2005 P.F. certificate. Scott \$130
 Estimate \$150 - 200
 Hammer Price \$225



- 251 ★★ Airmail, 1930, 65¢ Graf Zeppelin (Scott C13), a premium example, beautifully well centered, o.g., never hinged, Extremely Fine. Scott \$250
 Estimate \$200 - 300
 Hammer Price \$150

We estimate that if sent for a graded cert, this beauty would likely come back as XF-SUP 95. The centering is truly exceptional. But you be the judge.



- 252 ○ Airmail, 1930, 65¢ Graf Zeppelin (Scott C13), well centered and lightly canceled, Very Fine. Scott \$160
 Estimate \$120 - 150
 Hammer Price \$120



- 249 ★ Airmail, 1927, 10¢ Lindbergh (Scott C10), magnificent centering, o.g., very lightly hinged, Extremely Fine to Superb; with 2022 P.S.E. certificate graded **XF-SUP 95**. Estimate \$30 - 40
 Hammer Price \$30



- 253 ★★ Airmail, 1930, \$1.30 Graf Zeppelin (Scott C14), flawless o.g. without any of the usual cracks or bends, never hinged, Extremely Fine; with 2012 P.S.A.G. certificate graded **XF 90**, plus ungraded 2006 P.F. certificate for block. Scott \$575
 SMQ \$650
 Estimate \$500 - 750
 Unsold



- 254 ★★ Airmail, 1930, \$1.30 Graf Zeppelin (Scott C14), beautifully well centered, o.g., never hinged, Very Fine.
 Scott \$575
 Estimate \$350 - 500
 Hammer Price \$300



- 257 ★★ Airmail, 1931, 5¢ Winged Globe, rotary press printing (Scott C16), extraordinarily well centered, o.g., never hinged, Extremely Fine to Superb; with 2022 P.S.E. certificate graded **XF-SUP 95**.
 SMQ \$225
 Estimate \$150 - 200
 Unsold



- 255 ★★ Airmail, 1930, \$2.60 Graf Zeppelin (Scott C15), a beautiful top plate number single, handsomely well centered, o.g., never hinged (very faint gum bend), Very Fine; with 2016 P.S.E. certificate.
 Scott \$850
 Estimate \$600 - 800
 Hammer Price \$475



- 258 ★★田 Airmail, 1931, 5¢ Winged Globe, rotary press printing (Scott C16), plate block of 4, o.g., never hinged, Very Fine.
 Scott \$95
 Estimate \$50 - 75
 Hammer Price \$40



- 256 ○ Airmail, 1930, \$2.60 Graf Zeppelin (Scott C15), a superlative gem with magnificent centering and a neat light cancel, Extremely Fine to Superb; with 2019 P.S.A.G. certificate graded **XF-SUP 95**, *rarely seen this nice*.
 Scott \$525
 SMQ \$1,000
 Estimate \$600 - 800
 Hammer Price \$475



- 259 ★★ Airmail, 1933, 50¢ "Chicago" Zeppelin (Scott C18), extraordinary near perfect centering, o.g., never hinged, Extremely Fine or better.
 Scott \$75
 Estimate \$75 - 100
 Unsold



260 ★★ Airmail, 1933, 50¢ “Chicago” Zeppelin (Scott C18), top plate number single, well centered, o.g., never hinged (couple tiny gum skips), Very Fine or better. Scott \$75 Estimate \$50 - 75 Unsold



261 ★★田 Airmail, 1933, 50¢ “Chicago” Zeppelin (Scott C18), wide top plate block of 6, beautifully well centered throughout, a premium quality plate block, o.g., never hinged (usual minor gum bends), Extremely Fine. Scott \$600 Estimate \$250 - 350 Hammer Price \$225



262 ★★ Airmail, 1934, 6¢ Winged Globe (Scott C19), an exceptionally well centered gem, o.g., never hinged, Extremely Fine; with 2022 P.S.E. certificate graded XF 90. SMQ \$90 Estimate \$60 - 80 Unsold



263 ★★ Airmail, 1941-44, Transport complete (Scott C25-C31), a wonderful high quality set, o.g., never hinged, Extremely Fine to Superb; each with encapsulated P.S.E. certificate graded XF-SUP 95. SMQ \$325 Estimate \$200 - 300 Hammer Price \$225



264 ★★ Airmail, 1941, 6¢ Transport (Scott C25), a gem with mathematically perfect centering, o.g., never hinged, Superb; with 2022 P.S.E. certificate graded SUP 98. SMQ \$175 Estimate \$120 - 150 Hammer Price \$120



265 ★★ **Airmail, 1944, 8¢ Transport (Scott C26)**, extraordinarily well centered, o.g., never hinged, Extremely Fine to Superb; with 2022 P.S.E. certificate graded **XF-SUP 95**.
 SMQ \$45
 Estimate \$30 - 40
 Hammer Price \$24



269 ★★ **Airmail, 1941, 50¢ Transport (Scott C31)**, perfect in every respect, o.g., never hinged, Superb; with 2022 P.S.E. certificate graded **SUP 98**.
 SMQ \$185
 Estimate \$120 - 180
 Hammer Price \$150



266 ★★ **Airmail, 1941, 10¢ Transport (Scott C27)**, a gem, perfectly centered and wonderfully choice, o.g., never hinged, Superb; with 2012 P.S.E. certificate graded **SUP 98**.
 SMQ \$175
 Estimate \$100 - 150
 Hammer Price \$90



270 ★★ **Airmail, 1946, 5¢ DC-4 Skymaster (Scott C32)**, plate number single, with fantastically choice one-in-a-million centering, o.g., never hinged, a Superb gem; with 2022 P.S.A.G. certificate graded **Gem 100**.
 SMQ \$225
 Estimate \$150 - 200
 Hammer Price \$180



267 ★★ **Airmail, 1941, 15¢ Transport (Scott C28)**, perfect in every respect, o.g., never hinged, Superb; with 2022 P.S.E. certificate graded **SUP 98**.
 SMQ \$175
 Estimate \$120 - 150
 Hammer Price \$130

Top of the Pop - the highest grade listed by SMQ.



271 ★★ **Airmail, 1947, 10¢ Pan-American Building, dry printing (Scott C34a)**, a perfectly centered gem, o.g., never hinged, Superb; with 2022 P.S.E. certificate graded **SUP 98**.
 SMQ \$75
 Estimate \$50 - 75
 Hammer Price \$40



268 ★★ **Airmail, 1941, 30¢ Transport (Scott C30)**, flawless one-in-a-million centering, o.g., never hinged, Superb; with 2022 P.S.E. certificate graded **SUP 98**.
 SMQ \$140
 Estimate \$80 - 120
 Unsold



272 ★★ Airmail, 1947, 25¢ San Francisco Bay Bridge, dry printing (Scott C36a), perfect in every respect, o.g., never hinged, Superb; with 2022 P.S.E. certificate graded **SUP 98**. SMQ \$75
 Estimate \$50 - 75
 Hammer Price \$50



275 ★★ Airmail, 1964, 8¢ Goddard (Scott C69), a perfectly centered gem, o.g., never hinged, Superb; with 2022 P.S.E. certificate graded **SUP 98**. SMQ \$60
 Estimate \$40 - 60
 Hammer Price \$40



273 ★★ Airmail, 1962, 8¢ Jet & Capitol coil, tagged (Scott C65a), perfectly centered, o.g., never hinged, Superb; with 2011 P.S.E. certificate graded **SUP 98**. SMQ \$75
 Estimate \$50 - 75
 Unsold



276 ★★ Airmail, 1967, 20¢ Audubon (Scott C71), a magnificent plate number single, with truly awesome centering, o.g., never hinged, Superb; with 2022 P.S.A.G. certificate graded **SUP 98**. SMQ \$60
 Estimate \$40 - 60
 Hammer Price \$65



274 ★★ Airmail, 1962, 8¢ Jet & Capitol coil, tagged (Scott C65a), a fantastic gem pair, o.g., never hinged, Superb; with 2021 P.S.E. certificate graded **Gem 100**. SMQ \$275
 Estimate \$150 - 200
 Hammer Price \$120



277 ★★ Airmail, 1973, 13¢ Winged Envelope coil (Scott C83), a wonderfully choice pair, o.g., never hinged, Superb; with 2021 P.S.E. certificate graded **SUP 98**. SMQ \$110
 Estimate \$75 - 100
 Hammer Price \$60



278 ★★ Airmail, 1988, 44¢ New Sweden (Scott C117), right margin single, o.g., never hinged, Superb; with 2022 P.S.E. certificate graded **SUP 98**.

SMQ \$75
 Estimate \$50 - 75
 Hammer Price \$40



279 ★★ Airmail, 1988, 44¢ Langley (Scott C118), a gorgeous plate number single, featuring fantastic one-in-a-million centering, o.g., never hinged, a Superb gem; with 2022 P.S.A.G. certificate graded **Gem 100**.

SMQ \$150
 Estimate \$100 - 150
 Hammer Price \$100

Top of the Pop - the highest grade listed by SMQ.



280

280 ★★ Airmail, 1989, 45¢ U.P.U. Congress/Spacecraft (Scott C122), magnificent one-in-a-million centering and quality, o.g., never hinged, a Superb gem; with 2019 P.S.A.G. certificate graded **Gem 100**.

SMQ \$200
 Estimate \$120 - 180
 Hammer Price \$110

Top of the Pop - highest grade listed by SMQ.



281

281 ★★ Airmail, 1999, 48¢ Niagara Falls (Scott C133), perfect in every respect and outstandingly choice, o.g., never hinged, Superb; with 2021 P.S.E. certificate graded **SUP 98**.

SMQ \$85
 Estimate \$60 - 80
 Hammer Price \$55



282 ★★ Airmail, 1999, 48¢ Niagara Falls (Scott C133), magnificent quality, o.g., never hinged, Superb; with 2016 P.S.E. certificate graded **SUP 98**.

SMQ \$85
 Estimate \$60 - 80
 Unsold

Special Delivery and Registry



- 283 ★★ **Special Delivery, 1911, 10¢ ultramarine (Scott E8)**, exceptionally well centered, o.g., never hinged, Very Fine to Extremely Fine. Scott \$250
 Estimate \$200 - 300
 Hammer Price \$150



- 284 ★ **Special Delivery, 1911, 10¢ ultramarine (Scott E8)**, phenomenally well centered and exceptionally choice, a real beauty, o.g., very lightly hinged, Extremely Fine to Superb; with 2010 P.S.E. certificate graded **XF-SUP 95J**. Scott \$120
 SMQ \$250
 Estimate \$150 - 200
 Hammer Price \$160



- 285 ★ **Special Delivery, 1916, 10¢ pale ultramarine (Scott E10)**, brilliant color amid ample to jumbo margins, o.g., hinged, Very Fine. Scott \$320
 Estimate \$200 - 300
 Unsold



- 286 ★★田 **Special Delivery, 1922, 10¢ gray violet (Scott E12)**, top plate block of 6, beautifully well centered throughout, o.g., never hinged (usual minor gum bends and skips), Very Fine. Scott \$800
 Estimate \$400 - 600
 Hammer Price \$400



- 287 ★★ **Special Delivery, 1957, 30¢ lake (Scott E21)**, especially choice centering, o.g., never hinged, Superb; with 2014 P.S.E. certificate graded **SUP 98**. SMQ \$110
 Estimate \$75 - 100
 Hammer Price \$75



- 288 ○ **Registry, 1911, 10¢ ultramarine (Scott F1)**, a used gem, with near perfect centering and very lightly canceled, Extremely Fine; with 2010 P.S.E. certificate graded **XF 90**. SMQ \$55
 Estimate \$35 - 50
 Hammer Price \$30

Offices in China, Officials and Parcel Post



289 ★★ Offices in China, 1919, 2¢ on 1¢ green (Scott K1), an awesome gem with essentially perfect centering, o.g., never hinged, Superb, definitely a condition rarity; with 2000 P.F. certificate.
 Scott \$68
 Estimate \$120 - 180
 Hammer Price \$150



290 ★ Offices in China, 1919, 16¢ on 8¢ olive bister (Scott K8), o.g., lightly hinged, Extremely Fine to Superb; with 2006 P.S.E. certificate graded **XF-SUP 95J**.
 SMQ \$235
 Estimate \$150 - 200
 Hammer Price \$200



291 ★★ Agriculture Dept., 1873, 3¢ yellow (Scott O3), wonderfully well centered, with bright vivid color, o.g., never hinged, Very Fine; with 2015 P.F. certificate.
 Scott \$450
 Estimate \$350 - 500
 Unsold



292 ★★ Post Office Dept., 1873, 2¢ black (Scott O48), a gem with near perfect centering, o.g., never hinged, Extremely Fine and choice; with 2011 P.S.E. certificate.
 Scott \$75
 Estimate \$75 - 100
 Hammer Price \$180



293 ★ Parcel Post, 1913, 15¢ Automobile Service (Scott Q7), gorgeous color and lovely centering, o.g., barest trace of hinge, Very Fine to Extremely Fine.
 Scott \$60
 Estimate \$50 - 75
 Unsold



294 ★ Parcel Post, 1913, 50¢ Dairying (Scott Q10), plate number single, beautifully well centered, o.g., very lightly hinged, Extremely Fine. Scott \$200
 Estimate \$250 - 350
 Unsold



- 295 ★ Parcel Post, 1913, 75¢ Harvesting (Scott Q11), a perfectly centered beauty, o.g., very lightly hinged, Superb; with 2006 P.S.E. certificate graded **SUP 98**.
 Scott \$80
 SMQ \$450
 Estimate \$250 - 350
 Hammer Price \$190



- 299 ★✉ Airmail Envelope, 1952, 6¢ on 5¢ carmine, surcharged in red (Scott UC23), mint entire, immaculate, Very Fine.
 Scott \$1,250
 Estimate \$500 - 750
 Hammer Price \$500



296



297

- 296 ★★ Special Handling, 1940, 20¢ green, wet printing (Scott QE3a), a lovely, remarkably well centered example of this scarce printing, o.g., never hinged, Superb; with 2005 P.S.E. certificate graded **SUP 98**, only 5 grade higher! .
 SMQ \$180
 Estimate \$120 - 180
 Hammer Price \$450

- 297 ★★ Special Handling, 1925, 25¢ deep green (Scott QE4), a gem with essentially perfect centering and intense color, o.g., never hinged, Superb.
 Scott \$38
 Estimate \$50 - 75
 Hammer Price \$35



- 300 ★✉ Official Postal Card, 1913, 1¢ black (Scott UZ1), mint entire, immaculate, Very Fine.
 Scott \$700
 Estimate \$300 - 400
 Hammer Price \$375



- 298 ★★田 Special Handling, 1928, 25¢ yellow green (Scott QE4a), a lovely plate block of 6, well centered, o.g., never hinged, Very Fine. Scott \$360
 Estimate \$200 - 300
 Unsold

Postal Stationery

Duck Stamps



- 301 ★ **Hunting Permit, 1936, \$1 Canada Geese (Scott RW3)**, perfectly centered, a beauty! o.g., very lightly hinged, Superb; with 2011 P.S.E. certificate graded **SUP 98**.
 Scott \$150
 SMQ \$325
 Estimate \$200 - 300
 Hammer Price \$250



- 302 ★★ **Hunting Permit, 1937, \$1 Scaup Ducks (Scott RW4)**, essentially perfect centering, o.g., never hinged (minor gum bends), Extremely Fine.
 Scott \$300
 Estimate \$100 - 150
 Hammer Price \$100



- 303 ★ **Hunting Permit, 1941, \$1 Ruddy Ducks (Scott RW8)**, gorgeous centering, o.g., lightly hinged, Superb; with 2011 P.S.E. certificate graded **SUP 98**.
 Scott \$95
 SMQ \$200
 Estimate \$150 - 200
 Hammer Price \$180



- 304 ★ **Hunting Permit, 1942, \$1 Baldpates (Scott RW9)**, o.g., very lightly hinged, Extremely Fine to Superb; with 2019 P.S.E. certificate graded **XF-SUP 95**.
 Scott \$95
 SMQ \$165
 Estimate \$100 - 150
 Unsold



- 305 ★★ **Hunting Permit, 1951, \$2 Gadwall Ducks (Scott RW18)**, plate number single, o.g., never hinged, Very Fine.
 Scott \$90
 Estimate \$50 - 75
 Unsold



- 306 ★★ **Hunting Permit, 1963, \$3 Brants (Scott RW30)**, a beautiful plate number single with essentially perfect centering, o.g., never hinged, Extremely Fine and choice.
 Scott \$100
 Estimate \$75 - 100
 Unsold



307 ★★ Hunting Permit, 1971, \$3 Cinnamon Teals (Scott RW38), a perfectly centered gem, fantastically choice, o.g., never hinged, Superb; with 2022 P.S.E. certificate graded **SUP 98**. Scott \$43 SMQ \$175 Estimate \$150 - 200 Unsold



310 ★★ Hunting Permit, 1992, \$15 Spectacled Eider (Scott RW59), a magnificent corner margin plate number single, wonderfully well centered, o.g., never hinged, Extremely Fine to Superb; with 2006 P.S.E. certificate graded **XF-SUP 95**. SMQ \$100 Estimate \$75 - 100 Unsold



308 ★★ Hunting Permit, 1983, \$7.50 Pintails (Scott RW50), o.g., never hinged, Superb. SMQ is \$275 for Gem 100, \$150 for SUP 98; with 2011 P.S.A.G. certificate graded **Gem 100**. Estimate \$150 - 200 Unsold



311 ★★ Hunting Permit, 1993, \$15 Canvasbacks (Scott RW60), perfect in every respect, o.g., never hinged, Superb; with encapsulated P.S.E. certificate graded **SUP 98**. SMQ \$110 Estimate \$75 - 100 Unsold



309 ★★ Hunting Permit, 1990, \$12.50 Whistling Duck (Scott RW57), a wonderfully choice gem, perfect in every respect, o.g., never hinged, Superb; with 2005 P.S.E. certificate graded **SUP 98**. SMQ \$100 Estimate \$75 - 100 Unsold



312 ★★ Hunting Permit, 1996, \$15 Surf Scoters (Scott RW63), o.g., never hinged, Very Fine to Extremely Fine; with 2022 P.S.E. certificate graded **VF-XF 85**. SMQ \$45 Estimate \$30 - 40 Unsold



- 313 ★★ **Hunting Permit, 2004, \$15 Redheads (Scott RW71)**, a delightful duck, the centering is perfect, o.g., never hinged, Superb; with **encapsulated** P.S.E. certificate graded **Gem 100**.
 SMQ \$150
 Estimate \$100 - 150
 Unsold

Confederacy



- 315 ★★ **Confederacy, 1862, 1¢ Calhoun, orange, unissued (Scott 14)**, a full margined gem, o.g., never hinged, Very Fine; with 2022 Crowe certificate graded **VF 80**.
 Scott \$100
 Estimate \$75 - 100
 Hammer Price \$180



- 314 ★★ **Hunting Permit, 2006, \$15 Ross's Goose, souvenir sheet (Scott RW73b)**, artist and engraver signed, a flawless gem, perfect in every respect, o.g., never hinged, Superb; with 2018 P.S.E. certificate graded **SUP 98**.
 SMQ \$275
 Estimate \$150 - 200
 Hammer Price \$110

U.S. Collections, Stocks and Accumulations

Postal Stationery Collections

- 316** ☒ **Postal Stationery, 1855-1956, 43 different entires**, with a wide variety of issues and subjects, Nesbitts to modern airmails, advertising covers, interesting cancels and more. A nice lot for the retail dealer, generally Fine to Very Fine.
Estimate \$200 - 300
Hammer Price \$150
- 317** ★☒ **Postal Stationery, 1864-2000, collection of mint entires and postal cards**, neatly identified on album pages. Includes U75a//U548, U550-645, UC1-65, UO73-UO88, UX3, UX5-UX300 (including numerous city overprints varieties of UX32 and UX33), UXC1-25, UY1-UY40 (including many city overprint varieties of U9), UZ2-UZ5. There are many items cataloging \$25 to \$240. In excellent, near immaculate condition almost throughout. A great collection for the serious collector or dealer, generally Very Fine. Shipping weight 18.5 lbs / 8.4 kilos.
Scott \$5,400+
Estimate \$1,000 - 1,500
Hammer Price \$750
- 318** ★/○☒ **Postal Stationery, 1890-2000, dealer's stock of entires, aerogrammes and postal cards**, many hundreds of items filling a large box, mainly mint but also includes some used or pre-printed cards from the 1890's. Lots of duplication in the post 1950 period. Face value alone of the mint issues should easily exceed \$1000, there are pads of some issues. Condition is good - many newer items are pristine, mostly Very Fine overall. Shipping weight 30.5 lbs / 13.8 kilos.
Estimate \$300 - 400
Hammer Price \$225
- 319** ☒ **Postal Cards, 1873-1988, dealer's stock**, approximately 150 cards, with an immense variety of issues and uses, mainly advertising but with some unusual usages, typically \$10 to \$100 retail items.
Estimate \$600 - 800
Unsold
- 320** ☒ **Postal Cards, 1873-2000, collection / accumulation of mint and used**, on stock pages, mostly identified, up to 3 of a kind, including regular postal cards and reply paid, mint, mint pre-printed and used, with catalog values of individual items up to \$100. Only a few minor flaws noted, generally Fine to Very Fine. Shipping weight 20 lbs / 9.1 kilos.
Scott approximately \$1,400
Estimate \$150 - 200
Hammer Price \$180

Postal History and Cover Collections

- 321** ★☒ **B.E.P. Engravings, 1950's-1990's, massive collection**, approximately 700 to 800 cards with duplication, in 2 large boxes, including Philatelic and Numismatic souvenir cards (Scott listed), a small group of cards simply showing lovely black & white engravings (buildings in the capital, presidents etc), and perhaps 50 ASDA issued cards. All immaculate, a beautiful lot for collectors or dealers. Scott catalog values for the listed cards estimated at approximately \$3000, plus many unlisted. Shipping weight 43 lbs / 19.5 kilos.
Estimate \$400 - 600
Unsold
- 322** ☒ **Covers, 1875-1992, misc. collection**, including:
1. A few early issues, including 5¢ Bank Note (179) pair on cover to London, a 1904 advertising cover, and a 1934 Little America cover from Antarctica. Estimate \$75;
2. Regular and commemorative issue FDC's, including #611 (2¢ Harding imperf on a Nickles FDC, catalog value \$90), \$5 Hamilton and \$5 Moore. This group catalogs approximately \$150;
3. A complete set of Famous Americans FDC's. Catalog value \$150;
4. Airmail covers. A large group, mainly FDCs (catalog value \$3955) + some first flights (not counted). Best are a C10a + 645 FDC (catalog value \$1000) and a C18 legal-size FDC flown on a Zepp flight (catalog value \$295). There are several covers cataloging \$50 to \$100 each. There is some duplication in this section - up to 3 each.
5. A 1¢ postal card from Puerto Rico (UX1), unused, Fine to Very Fine, catalog value \$165.
Condition is good for the period: earlier FDC's are typically cacheted and addressed, later cacheted and unaddressed. Main value is clearly in the better early airmail covers but there are many other useful extras thrown in. A sampling is imaged on the web. Shipping weight 3.8 lbs / 1.7 kilos. Scott \$4,400 ++
Estimate \$1,000 - 1,500
Hammer Price \$800

Stamp Collections

323 ☒ **First Day Programs, 1954-2003, a most unusual collection.** Approximately 85 souvenir programs (with duplication), officially issued by the U.S. Post Office for various first day ceremonies, many with first day cancels and several with autographs of some of the distinguished persons present at the ceremonies. Nearly all in excellent condition (1954 is an exception), a fun lot for the collector, generally Very Fine, a small sampling has been photographed. Shipping weight 7.9 lbs / 3.6 kilos.

Estimate \$75 - 100
Unsold

324 ☒ **Postal history miscellany, 1879-1939,** 12 different covers, including a 3¢ Bank Note with major plate crack, couple ad covers from the 1890's, a 1924 incoming letter from Pago, Pago, Samoa, a 1926 registered airmail cover, #629 FDC, National Stamp Week 1935 with 14 different definitives, a goodwill Coronation Flight to London in 1937 and a 1939 United Air Lines flight log. Quite a pot-pourri, generally Fine to Very Fine but not always.

Estimate \$120 - 150
Hammer Price \$80

325 ☒ **Railway Post office, 1886-1935, group of 11 covers and postcards,** featuring a wide variety of cancels; a lovely little group, Fine to Very Fine.

Estimate \$150 - 200
Unsold

326 ☒ **Waterbury fancy cancels, 1876-80, group of postcards and covers,** two covers and twelve postcards, mostly UX5 but a few UX7 all with lovely strikes of various Waterbury, CT cancels, many listed in Rohloff and rarity rated, a neat group for the specialist, Very Fine.

Estimate \$300 - 400
Hammer Price \$275

327 ★/○ **1847-1974, massive mounted collection, housed in 8 Scott National albums,** plus loose pages from another album where catalog value adds up quickly, featuring classics which are predominantly used, commemoratives in singles, sets, blocks of 4 and plate number blocks, airmails, special deliveries, officials, parcel posts, revenues, cut squares and postal stationery; the final album is United Nations and not counted in catalog value but many items that catalog between \$50-\$500; range of centering is very good to fine but some nice one too; numerous items not counted as we question genuineness; we have imaged several of the key pages to give you a flavor of this lot; great for the dealer who wants to break it up or for the collector who wants to fill some spaces or add to this unique gigantic lot! Tons of catalog value and with minimal duplication. Shipping weight 75 lbs / 34 kilos. Scott

\$25,430+
Estimate \$3,000 - 4,000
Hammer Price \$2,500

328 ○ **1851-1917, used collection, all F.-V.F.,** 51 all different, neatly identified, including:
1851 issue: #7 (\$140), 9 (\$100), 10 (\$190), 15 (\$145), 17 (\$250);
1857 issue: #20 (\$275), 24, 25 (\$190), 29 (\$400), 32 (\$190), 33 (\$190), 38 (\$475);
1861 issue: #63, 68;
1869 issue: #114, 115 (\$225);
Banknotes: #134 (\$200), 146, 150, 166 (\$300), 189, 209, 216;
1890 issues: #228, 240 (\$175), 285;
1901 issue: #309, 311;
Wash-Franklins: #341, 342, 352 (\$225), 353 (\$220), 392, 394, 411, 414, 415, 421, 444, 447, 448, 452-455, 456 (\$170), 457, 458, 469, 480.

No faults and no gems but no dogs either, just good salable stamps, a nice lot for the collector or dealer.

Scott \$5,144
Estimate \$1,200 - 1,500
Unsold

- 329** ○ **1851-1980, neatly mounted used collection**, in two American Heirloom Collection albums, sparse in the classics but then more plentiful in the 20th century, predominately used but a few mint stamps throughout; not image entirely but all the key pages are to give a flavor; the modern section contains approximately \$50 in face value postage; this lot includes airmails, officials, postage dues and parcels posts; overall condition is good to very fine a few potential finds in this lot! Shipping weight 8 lbs / 3.6 kilos.
 Scott \$1,897+
 Estimate \$200 - 300
 Hammer Price \$150
- 330** ○ **1852-1869, used classics collection**, 33 different stamps from a dealer's stock of better items, neatly identified on stock pages. Includes:
 1851 issue: 9 (\$100), 12 (\$775), 17 (\$250);
 1857 issue: 20 (\$275), 32 (\$190), 33 (\$190), 36 (\$300);
 1861 issue: 68 (\$60), 69 (\$95), 71 (\$250), 75 (\$485), 76 (\$125), 77 (\$175), 78b (\$450);
 1867 issue D grill: 85 (\$1100);
 1867 issue E grill: 86 (\$450), 87 (\$200), 89 (\$350), 90 (\$375), 91 (\$575);
 1867 issue F grill: 92 (\$425), 95 (\$850), 96 (\$250), 97 (\$250), 98 (\$275), 99 (\$1500), 100 (\$1000);
 1869 issue: 112 (\$140), 115 (\$225), 117 (\$130), 118 (\$850), 119 (\$190), 120 (\$650).
 All appear to be sound, genuine and off-center. A great way to acquire numerous high-catalog items at a bargain price.
 Scott \$13,525
 Estimate \$800 - 1,200
 Hammer Price \$1,000
- 331** ○ **1857-1938, used collection, all V.G.-Fine**, 37 different, all identified, all either Fine or V.G., with catalog values ranging from \$3 to \$750. Includes:
 1857 issue: #20 (\$275), 26;
 1861 issue: #65, 67 (\$750, repaired), 68, 69, 70 (\$300), 73, 75 (\$425, faults), 76 (\$125), 77 (\$175, faults), 78b (\$450);
 1867 grills: #86 (\$450), 87 (\$200), 88, 89 (\$350), 90 (\$375), 92 (\$425), 93, 94, 96 (\$250), 98 (\$275);
 1869 issue: #113, 114, 119 (\$190), 120 (\$650);
 Banknotes: #135, 137 (\$425), 162 (\$135), 208 (\$110), 218 (\$225);
 Wash-Franklins etc: #390, 391, 394, 443, 832b (faults).
 Many useful stamps here, especially for the retail dealer or eBay. Please check the scans on the web.
 \$1445 catalog value with faults, \$5885 are sound.
 Scott \$7,330 total
 Estimate \$600 - 800
 Hammer Price \$600
- 332** ○ **1857-1917, used collection in outstanding quality**, 23 stamps in all, with a few graded items (certificates are imaged on our website), all with exceptional centering even some jumbos and many with minor fault such as tiny pinhole or corner creases, the lot includes Scott #'s 26, 68, 73, 113, 161, 179, 184, 185 (x2), 190, 206, 216, 217, 282C, 284, 307, 310, 326, 399, 404, 504 (x2) and E5; a great lot for the used collector who wants to fill spaces with some eye-catching stamps! overall Very Fine.
 Scott \$670
 Estimate \$150 - 200
 Hammer Price \$150
- 333** ○ **1862-1988, small beginner's collection of mint and used**, in older mounts on album pages. Includes a smattering of early issues to about 1915, then some definitives, airmail, special delivery and other back-of-the-book, with the main value from 1918 on. Best item is a hinged C18. Usual mixed condition with some faults on early issues, F.-V.F. for the more modern. Scott approximately \$600
 Estimate \$60 - 80
 Hammer Price \$50
- 334** ★/○ **1869-1919, small group of better items with certificates and with problems**, including:
 117 used (PSAG certificate, "small corner crease", catalog value \$130);
 209 o.g. (P.F. certificate, "reperfed", \$160);
 327 o.g. (P.F. certificate, "pulled perf", \$125);
 390 line pair (P.F. certificate, "bottom stamp never hinged with a gum blend", graded VF-XF 85, \$35);
 K13 without gum (P.F. certificate, "fake cancel", \$120 as mint); and
 O5 unused (Crowe certificate, "part o.g.", \$525).
 Mostly V.F.-X.F. centering, an interesting lot of near misses.
 Scott \$1,095
 Estimate \$150 - 200
 Hammer Price \$170
- 335** ★/○ **1870's-1940's, eclectic mystery mix**, a haphazard lot house in a small box but has some worthwhile items to pick out in addition to some nice mint postage and U.S. souvenir sheets, includes a stack of FDC's and a little stack of unused Crystal and Westvaco mounts probably worth \$25 by themselves, a real treasure trove sure to elicit some fun and finds; partially imaged on the website.
 Estimate \$100 - 150
 Hammer Price \$70

- 336 ○ 1870-79, collection of 6¢ Lincolns, C.B.N.C., N.B.N.C., A.B.N.C. printings (Scott 148, 159, 186), 256 stamps in varying shade varieties and mixed condition with some neat cancels and nice stamps throughout. Scott \$5,100+
Estimate \$600 - 800
Unsold
- 337 ★★/★ 1879-1940, visually stunning grouping of lots that are exceptionally well centered, some with minor faults, 13 have certificates (some graded, some not) which are imaged on the website; overall a great lot with many eye-catching items, perfect for the collector looking to fill spaces with relatively inexpensive stamps or for the dealer's stock who loves to have beautiful stamps on hand; lot includes Scott #'s 205, 219D, 225, 231, 236, 270, 285, 339, 370, 397, 507, 512, 555, 568, 644, 701, JQ1, LO3, PS4, and PS7; a really nice lot that should command a premium!
Scott \$1,065
Estimate \$200 - 300
Hammer Price \$170
- 338 ★/○ 1893-1958, mixture of mostly unused, 58 stamps including Scott #'s 269, 279, 281, 282, 285, 286 (x2), 289, 290 (x2), 294, 295, 297, 299, 300, 301, 304, 305, 306 (x2), 307, 308, 309, 319, 323 324, 325 326 328 (x2), 329, 331, 334, 337, 377, 378, 424, 425, 425e, 430, 455, 465, 466, 493, C6, C10 (x2), C19, C51a, E3, E4, E13, RW8, RW13 signed, and RB4; an interesting little group with a few very high catalog. Centering ranges from F.-V.F. downward, o.g., hinged. Scott \$3,270
Estimate \$250 - 350
Hammer Price \$300
- 339 ★★/★/○ 1898-1986, commemorative issues collection, mostly mint, in mounts on Mystic Stamp Co. pages. Includes a scattering of used to 1934, nearly complete mint from 1935 to 1986. A nice starter collection, generally Fine to Very Fine, a small sampling is imaged on the web. Shipping weight 4.9 lbs / 2.25 kilos.
Scott approximately \$600
Estimate \$50 - 75
Hammer Price \$35
- 340 ○ 1898-1941, eclectic used balanced lot, comprised of 28 items including Scott #'s 285, 288, 290 (x2) 294, 297, 302, 303, 304, 305, 309, 310 (x2), 323, 335, 336, 397, 398, 399, 403, C1 92), C31, E4 and E8, generally Fine or F.-V.F. Scott \$445
Estimate \$40 - 60
Hammer Price \$30
- 341 ★/○ 1918-1985, mostly mint collection, in mounts on album pages, filling a large binder. Main value is in early airmail including C1-6 and C18. There are numerous commemoratives from the 1920's on, and extensive modern issues, also a section of duplicated used. A useful beginner's collection with lots and lots of stamps, generally Fine to Very Fine, a small sampling is imaged on the web. Shipping weight 5 lbs / 2.3 kilos.
Scott approximately \$1,500
Estimate \$150 - 200
Hammer Price \$180
- 342 ★★/★ 1920-1937, plate blocks, group of 10 mostly different, including #548, 554, 565 (two, one hinged with some separations, one never hinged), 611 (one top, one side), 622, 641, 678 and 796, o.g., earlier issues mostly hinged, later issues (611 onward) all never hinged, generally Fine to Very Fine. Scott \$1,539
Estimate \$300 - 400
Hammer Price \$225
- 343 ★ 1933-1934, commemorative plate blocks group, including Scott #'s 731, 741-749 and 754 (imperf), all imaged on the website; a lovely little group for the plate number enthusiast, Fine to Very Fine. Scott \$121
Estimate \$40 - 60
Hammer Price \$35
- 344 ★ 1933-1939, souvenir sheets group, including the Farleys #730, 731 (creased between row one and two), 735, 752, 751 and the 1939 Philatelic Truck souvenir card with gum (hinged); a neat little group. Scott \$100
Estimate \$40 - 60
Hammer Price \$40
- 345 ★/○ Back-of-the-Book, 1891-1935, mostly mint group, 22 mostly different including 2 plate blocks. Predominantly special delivery or postage due + a few others. Very mixed condition, some no gum or regummed, some o.g., even a few never hinged, plus a used revenue. Centering is typically Fine or F.-V.F. Some wheat, some chaff. Scott \$2,031
Estimate \$150 - 200
Hammer Price \$160

- 346 ★★/★ **Booklets, 1907-1996, all mint collection of booklet panes and unexploded booklets**, in mounts in 2 White Ace albums. Better items including #300b, 319g (n.h.), 331a (n.h.), C10a (pane and full booklet), plus a run of booklets from 1976-1996. Reasonably clean, o.g., many never hinged, generally Fine to Very Fine. Shipping weight 6.8 lbs / 3.1 kilos.
 Scott approximately \$4,000
 Estimate \$750 - 1,000
 Hammer Price \$650
- 347 ★/○ **Revenues, 1862-1949, small group of better items**, including:
 1st Issue imperf: #R32a (\$90), R61a (\$140), R66a pair (\$90), R86a (\$250), R90a (\$250), R91a (\$200);
 1st Issue part perf: #R19b (\$30), R52b (\$90);
 1st Issue perf: #R50c (\$45);
 Documentaries: #R128 (\$260), R140 (\$50), R152c (\$125), R353 (\$85), R478 (\$67.50), R486-500 (\$80), R528 (\$72.50).
 Nice condition overall, generally Fine to Very Fine.
 Scott \$1,925
 Estimate \$400 - 600
 Unsold
- 348 ★ **Tax Paid Revenues, 1953-1955, attractive mint collection**, in mounts on Mystic Stamp Co. album pages, including cigarette stamps, cigar stamps, snuff stamps and tobacco stamps - approximately 250 different stamps, all Scott unlisted, and apparently 90% complete for the period. In excellent condition, generally Very Fine, seldom seen. A small sampling has been photographed. Shipping weight 4.2 lbs / 1.9 kilos.
 Estimate \$200 - 300
 Unsold
- 349 (★) **Hunting Permits, 1935-1967, nearly complete for the period**, missing only 1959, in older Protective Mounts on album pages. A test of RW2 showed it stuck to backing, therefore the whole collection has been cataloged as no gum. Decent centering, generally Fine to Very Fine. Scott \$1,283
 Estimate \$250 - 350
 Unsold
- 350 ★★/★ **Hunting Permits, 1943-1975, small dealer's stock**, including the following:
 NH: RW10 (x4), RW12 (x2), RW13, RW19 (x2), RW24, RW30, RW35 and RW42;
 LH: RW5, RW12 and RW17 (x2);
 NG: RW5, RW6.
 Centering varies from F.-V.F. downward.
 Scott \$1,745
 Estimate \$300 - 400
 Unsold
- 351 ★★ **Hunting Permits, 1988-2005, group of 11 different (Scott RW55, RW64-68, RW70-72, etc.)**, including 2 Louisiana state duck stamps, RW55, RW64-68, RW70-72, etc., o.g., never hinged, Fine to Very Fine.
 Scott \$322
 Estimate \$75 - 100
 Unsold

Dealers Stocks and Accumulations

352 ○ **1851-1860 issues, dealer's stock of better used**, neatly identified and arranged on stock pages. Includes Nos. 7 (x3), 8, 9 (x17), 10, 14, 15 (x3), 24, 25 (x3), 29, 31, 32, 33, 36 (x10). Centering ranges from F.-V.F. downward. Small faults affect approximately 20% of the total catalog value.

Scott \$9,928
 Estimate \$800 - 1,200
 Hammer Price \$800

353 ○ **1852-1923, used dealer's stock**, 100+ stamps with duplication, arranged on black stock pages, with strength in 1861 issue, bank notes, Columbians, some special delivery, a set of parcel post and 23 revenues. Centering varies from V.F. downward, and small faults affect perhaps 15-20% of the catalog value. Many useful items here - check the scans on the web.

Scott \$10,176
 Estimate \$800 - 1,200
 Hammer Price \$600

354 ★/(★) **1857-1918, mint dealer's stock**, approximately 150 stamps with duplication, arranged on black stock pages, including a handful of early issues, many 1890 issues, Columbians, Trans-Miss., Pan-Americans and other commemoratives, a few special delivery, some Offices in China, newspaper proofs, a few parcel post and revenues, and some Canal Zone. Most are o.g., hinged or hinge remnant, but \$2595 catalog value is in stamps without gum or regummed that were cataloged as o.g. (\$1075 is in stamps without gum that were cataloged as such). Centering varies widely, from V.F. down to V.G. Small faults affect approximately 15-20% of the total catalog value. Many useful stamps here - please check the scans on the web.

Scott \$14,172
 Estimate \$1,000 - 1,500
 Hammer Price \$950

355 ○ **1861-1866 issues, dealer's stock of better used**, neatly identified and arranged on stock pages. Includes Nos. 64b, 65b, 67 (x2, one with Weiss certificate indicating faults), 67a, 68 (x8), 69 (x4), 71 (x2), 73 (x3), 75 (x3), 76 (x7), 77 (x5), 78 (x4), 78a (x6), 78b (x5). Centering ranges from F.-V.F. downward. Small faults affect approximately 20% of the total catalog value.

Scott \$15,025
 Estimate \$1,200 - 1,800
 Hammer Price \$900

356 ★★/★ **1861-1938, mint dealer's stock**, arranged on black stock cards, quite a miscellany, including some 1861 trial colors, many commemoratives from 1901 Pan-Americans onward, 1922 flat plate and later rotary definitives, 4 C18's and a few other back-of-the-book, and a small selection of blocks of 4 (including Jamestown and Lexington-Concord complete). Considerable duplication (up to 20 each), o.g., some never hinged / some hinged, a few faults but generally Fine to Very Fine.

Scott \$3,700+
 Estimate \$400 - 600
 Hammer Price \$325

357 ★★/★ **1862-1978, mint dealer's stock**, identified and priced on dealer's pages in 2 small stock books / counter books, with only minor duplication. Main value is in issues 1890 to 1930's, with Columbians, regular issues, Washington-Franklins, commemoratives, early airmail etc. There is also a small section of decent ducks at the end. Best item is probably a #RW5 plate number single never hinged Fine to Very Fine, catalog value \$425. There are many sound items cataloging \$20 to about \$300. Condition is generally o.g., hinged or never hinged, Fine to Very Fine; we note a #240 catalog value \$450 with a light crease, otherwise it all seems like a sound and definitely salable stock, excellent for internet sales or shows. Shipping weight 2.1 lbs / 0.95 kilo.

Scott \$4,707
 Estimate \$750 - 1,000
 Hammer Price \$600

358 ○ **1867 grilled issues, dealer's stock of better used**, neatly identified and arranged on stock pages. E grills include Nos. 86 (x3), 89 (x4), 90 (x4), 91 (x5). F grills include Nos. 92 (x3), 95 (x6), 96 (x7), 97 (x12), 98 (x12), 99 (x2), 100 (x2). Centering ranges from F.-V.F. downward. Small faults affect approximately 20% of the total catalog value.

Scott \$26,915
 Estimate \$2,000 - 3,000
 Unsold

359 ○ **1869 Pictorial issue, dealer's stock of better used**, neatly identified and arranged on stock pages. Includes Nos. 112, 113 (x5), 115 (x7), 116 (x9), 117 (x6), 118 (x3), 119 (x9), 121 (with Weiss certificate indicating reperfed). Centering ranges from F.-V.F. downward. Small faults affect approximately 20% of the total catalog value.

Scott \$8,595
 Estimate \$750 - 1,000
 Hammer Price \$800

- 360** ○ **1870-1888 Banknote issues, dealer's stock of better used**, 47 stamps, including:
 1870 grills: #134;
 1870 no grill: #149 (x9), 151 (x4), 155 (x2);
 1873 issue: #160, 162, 163 (x8), 165 (x2), 166 (x2);
 1879 issue: #189, 191;
 1882 issues on: #208, 214, 217 (x7), 218 (x7).
 Centering varies - most are F.-V.F. but a few are V.G. Small faults affect approximately 20% of the catalog value. Many useful stamps here.
 Scott \$7,518
 Estimate \$750 - 1,000
 Unsold
- 361** ★★/★ **1875-1950, small mint dealer's stock**, 50 different, all identified, including:
 1869 issue: #133 (\$350, thin);
 Banknotes: #214;
 1901 issue: #314;
 Wash-Franklins: #390 PR, 392, 393 PR (\$260), 410 PR, 411 PR, 412 PR, 420 (\$115), 442 LP (\$130), 448, 448 PR, 450, 452 PR, 455 PR, 465, 470, 492 LP;
 Later issues: #669-679 (\$265), 720b, 833;
 Airmail: #C10a (\$115 NH);
 Postage Dues: #J22, J40 (\$100), J78;
 Offices in China: #K8;
 Officials: #O73 (\$125), O79 (\$300), O90;
 Newspapers: #PR61 (\$135);
 Cut squares: #U19, U40, U70, U96, U111;
 Ducks: #RW12, RW13, RW16, RW17.
 O.g., most are hinged (a few are never hinged), generally Fine to Very Fine but \$1,335 catalog value is in stamps with faults or off-center. Scott \$3,302 total
 Estimate \$400 - 600
 Hammer Price \$375
- 362** ○ **1881-1970's, large used accumulation**, housed in two Liberty Stamp Albums, three stockbooks, and some stock pages, heavy duplication so perfect for the dealer who wants to break it down, a few finds to be had here with a couple items being genuine this could be a deal! A good bit of pages imaged to give a flavor of this lot, most of the modern material is used and not counted in the catalog value; all of it fits into one bankers box.
 Scott \$2,000+
 Estimate \$150 - 200
 Hammer Price \$130
- 363** ★★/★ **1908-1981, mint dealer's stock**, identified and arranged on black stock pages, mainly Washington-Franklins and some 1920's-30's issues, singles, sets, coil pairs, line pairs and a few blocks, also a set of Famous Americans (plate blocks except Clemens #863 is a block of 4), a few later misperfs, and Ryukyus 44-53 (not photo'd). Condition is generally o.g., hinged or never hinged, F.-V.F., except #440 is a dog (off-center, thinned and the gum is dubious at best, catalog value \$450, estimated real value \$25; catalog value for all others in the lot is \$1354.15, estimated real value \$240).
 Estimate \$250 - 350
 Unsold
- 364** ★★ **1929, Kans.-Nebr., wholesale accumulation**, in blocks and strips, including
Kans.: 1½¢ #659 (128 x \$6.5, \$832), 3¢ #661 (19 x \$35, \$605), 4¢ #662 (16 x \$35, \$560), 5¢ #663 (15 x \$25, \$375), 6¢ #664 (21 x \$50, \$1050) and 9¢ #667 (6 x \$27.5, \$165);
Nebr.: 1¢ #669 (191 x \$6.5, \$1241.50), 3¢ #672 (13 x \$22, \$286), 4¢ #673 (10 x \$35, \$350), 5¢ #674 (28 x \$30, \$840), 7¢ #676 (15 x \$45, \$675) and 9¢ #678 (26 x \$70, \$1820).
 In decent condition throughout, o.g., never hinged, generally Fine to Very Fine. Scott \$9,473
 Estimate \$750 - 1,000
 Hammer Price \$1,000
- 365** ○ **1930's onward, massive used accumulation**, most neatly organized by Scott number in glassines, but some scattered about in a few stock wbooks, a gallon size plastic bag with duplicates stacked and banded together; who knows what goodies await in these two overflowing boxes!
 Estimate \$100 - 150
 Hammer Price \$100
- 366** ★★/★ **Airmail dealer's stock, 1918-1958**, arranged on black stock pages, with a useful showing of early issues, including # C1-6 (2 sets + extras), C10a, eight C18, some Transport plate blocks and a couple booklets, o.g., all never hinged except one set C1-C3, C9, C21 and four C18's are lightly hinged, generally Fine to Very Fine. Scott \$1,402
 Estimate \$300 - 400
 Hammer Price \$325

367 ★★/★ Booklets, 1917-1977, small accumulation of booklet panes and a few complete booklets, including quantities of panes of #s 498e, 499e, 552a, 554c, plus some Presidentials, a large group of 1965-1976 issues and a few airmails, plus 5 complete booklets (best is BK56), generally Fine to Very Fine, a selection has been imaged. Scott \$300 ++
 Estimate \$50 - 75
 Hammer Price \$65

Face Value Lots

368 ★ Face value postage, 1943-1957, commemorative full mint sheets group (Scott 894-1099), 120 sheets housed in 5 Schaubek albums with dust covers, including Scott numbers #894-1099, also including matching mounted mint singles in the same Scott # range; Face Value \$205.00.
 Estimate \$100 - 150
 Hammer Price \$400

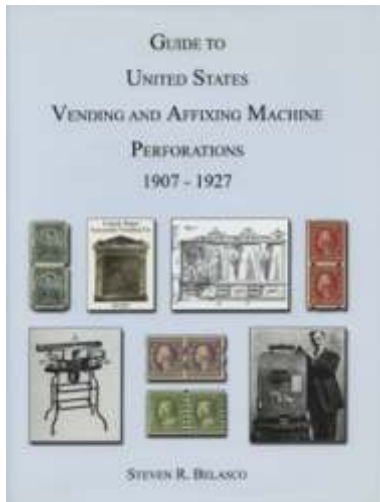
369 ★★ Face value postage, 1930's-2015, massive quantities, including:
1¢: sheets and plate blocks, face value \$8.06;
2¢: sheets and plate blocks, face value \$14.28;
3¢: 15 sheets, 2152 plate blocks + extras, face value \$286.47;
4¢: 9 sheets and 1017 plate blocks, face value \$185.72;
5¢: 589 plate blocks + extras, face value \$118.75;
6¢: 10 sheets, 85 strips/plate blocks of 10, 20 or 30 + extras, face value \$123.30;
8¢: 40 sheets and 109 plate blocks, face value \$355.92;
10¢: 9 sheets + strips and extras, face value \$129.60;
11¢: sheet and a plate block, face value \$7.70;
13¢: 10 sheets + 10 CAPEX sheets + 100 plate blocks + extras, face value \$284.50;
15¢ to 21¢: face value \$33.60;
25¢: 37 sheets, face value \$452.50;
29¢: sheets and souvenir sheets, face value \$38.28;
32¢: souvenir sheets, face value \$8.00;
49¢: 2 uncut press sheets, face value \$70.56;
\$8.75: one, face value \$8.75.
 Total face value \$2121.99. Shipping weight 12.5 lbs / 5.7 kilos.
 Estimate \$750 - 1,000
 Hammer Price \$900

There are some useful parts to this lot (including the postage 10¢ and up, numerous better se-tenant issues, and the uncut press sheet of the Civil War issue), and some dubious (what do you do with 2152 3¢ plate blocks?). In coming up with an estimate for the lot, we figured the 1¢ through 4¢ at zero, and the balance (face value \$1631.46) at 45% of face.

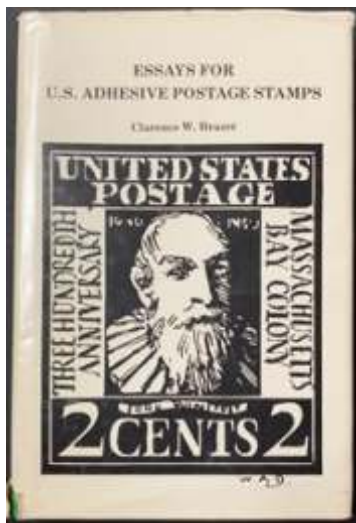
370 ★★ Face value postage, 1940's-2000's, mint plate blocks and full sheets, from 1¢-\$11.75, lots of duplication but much variety with n.h. commemorative sheets and many modern sheets still in the original post office packaging; also an ace album of sheets with lots of high values, a stellar lot. Face value \$3340+. Shipping weight 75 lbs / 34 kilos.
 Estimate \$2,000 - 3,000
 Hammer Price \$1,900

U.S. Philatelic Literature

General Works

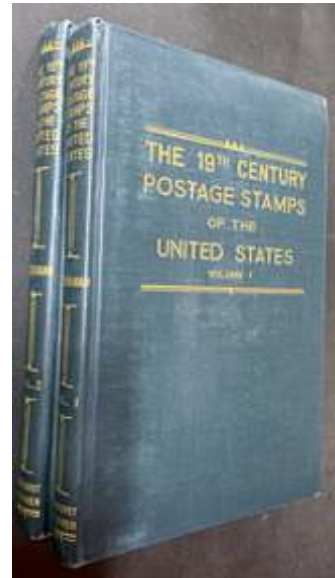


- 371 **Belasco, Steven R.**, *Guide to U.S. Vending and Affixing Machine Perforations 1907-1927*, 2009, hard bound, 216 pages, in-depth coverage, profusely illustrated in color. Like new, signed by the author and endorsed to Stanley Piller.
 Estimate \$30 - 40
 Hammer Price \$35

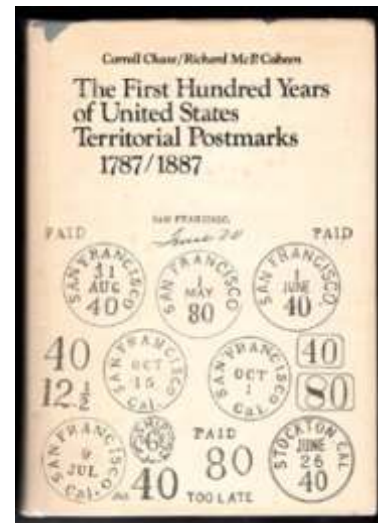


- 372 **Brazer, C.**, *Essays for U.S. Adhesive Postage Stamps*, 1977, reprint by Quarterman Publications, Inc., hardbound with dust jacket, 295 pages with black and white illustrations. Slight wear.
 Estimate \$30 - 40
 Hammer Price \$40

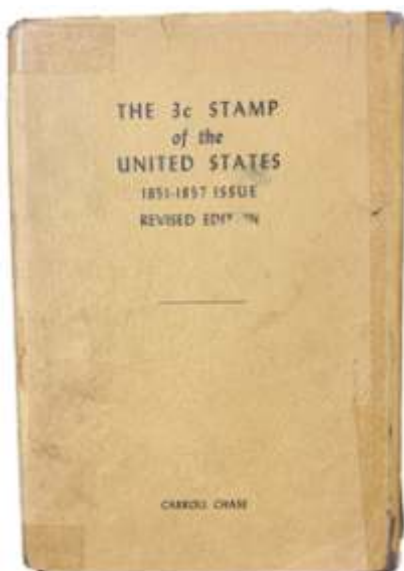
Brazer's work was used as the basis for Scott catalog listings of US essays. His book is still useful because contains some information never added to Scott.



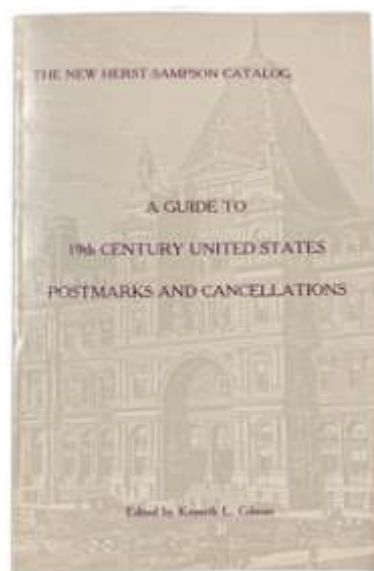
- 373 **Brookman, L.**, *19th Century Postage Stamps of the U.S.*, 1947, 1st edition, 2 volumes, hard bound; both books signed by the author.
 Estimate \$40 - 60
 Hammer Price \$40



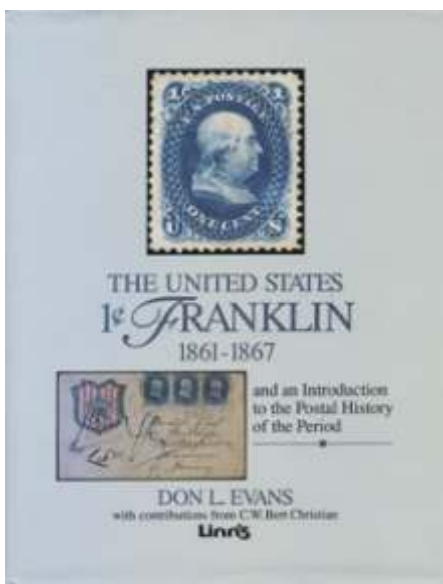
- 374 **Chase & Cabeen**, *The First Hundred Years of U.S. Territorial Postmarks, 1787-1887*, 1980, reprint, hard bound with cover, 341 pages with black and white illustrations.
 Estimate \$20 - 30
 Unsold



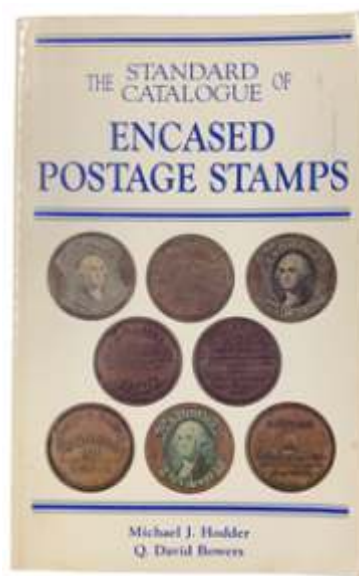
375 Chase, C., *The Three Cent Stamp of the U.S. 1851-1857*, 1942, 2nd edition (revised), hard bound; 374 pages with black and white illustrations; signed by the author. Estimate \$40 - 60
Hammer Price \$28



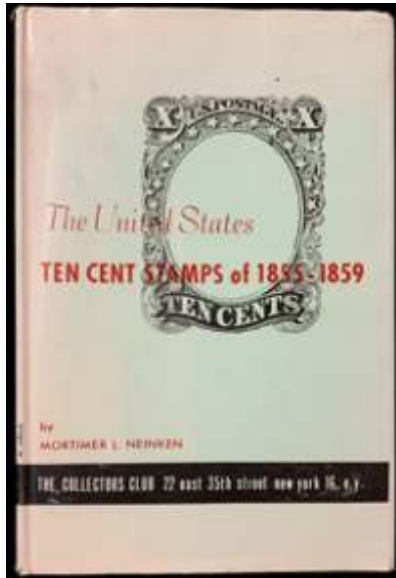
377 Gilman, Kenneth L., Editor, *A Guide to 19th Century U.S. Postmarks and Cancellations*, softbound, First edition, 1989. Estimate \$20 - 30
Unsold



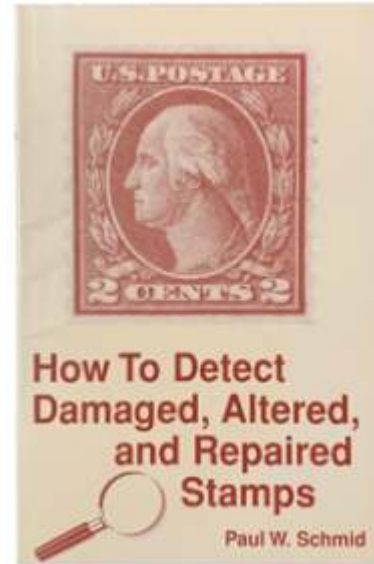
376 Evans, Don L., *The U.S. 1¢ Franklin, 1861-1867, and an Introduction to the Postal History of the Period*, 1997, hard bound, 418 pages, well illustrated in black and white, with extremely detailed coverage of the issue. Nearly new. Estimate \$20 - 30
Hammer Price \$17



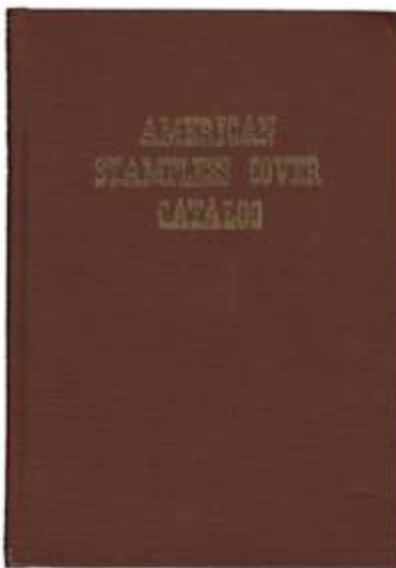
378 Hodder & Bowers, *The Standard Catalogue of Encased Postage Stamps*, 1989, paper back. A very detailed work by two major numismatists, giving a much more detailed treatment than the Scott catalog's. Estimate \$20 - 30
Hammer Price \$20



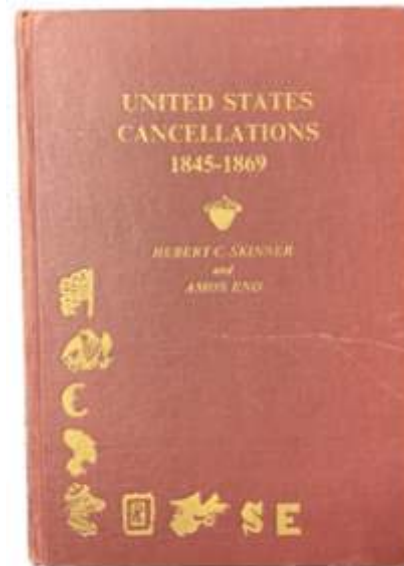
- 379** **Neinken, M.**, *The U.S. Ten Cent Stamps of 1855-1859*, 1960, hardbound with dust jacket; 252 pages with black and white illustrations. The main reference work on this issue.
 Estimate \$30 - 40
 Hammer Price \$22



- 381** **Schmid, Paul W.**, *How To Detect Damaged, Altered, and Repaired Stamps*, softbound, 105 pages with black and white illustrations. Extremely useful.
 Estimate \$30 - 40
 Hammer Price \$45



- 380** **Sampson, E. N. (ed)**, *American Stampless Cover Catalog*, this is the 1971 edition, which combined editions 1-6 of the *U.S. Stampless Cover Catalog* originally from 1936-52, as well as the *American Colonial Stampless Catalog* and the *United States Territorial Postmark Catalog*; 225 pages with black and white illustrations.
 Estimate \$30 - 40
 Unsold



- 382** **Skinner, H. and Eno, A.**, *U.S. Cancellations, 1845-1869*, 1980, hard bound, 362 pages with black and white illustrations. Still the essential work on this area.
 Estimate \$30 - 40
 Hammer Price \$45

Anthologies Etc.



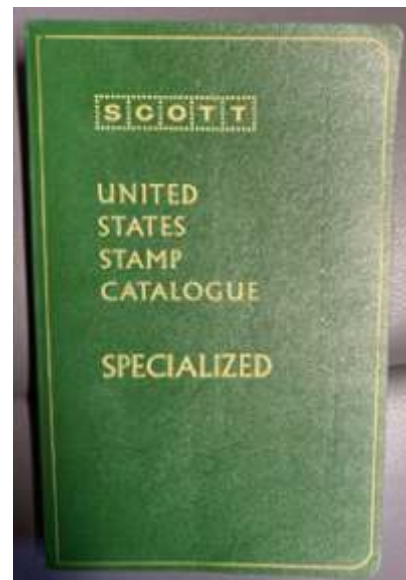
383 **Anthologies**, 4 books: *American Philatelic Miscellany*, by Susan M. McDonald, 1976 Quarterman reprint, hard bound, 569 pages, well illustrated in black & white, nearly new; *Baker's U.S. Classics*, by Hugh and David Baker, 1985, hard bound, 343 pages, illustrated in black & white, nearly new; *Pat Paragraphs*, by Elliott Perry, 1981, hard bound, 648 pages, illustrated in black & white, like new; and *Sloan's Column*, by George B. Sloan, 1961, hard bound, 467 pages, illustrated in black & white, nearly new. All have numerous articles on many facets of U.S. philately - these are excellent works for the serious U.S. philatelist.

Estimate \$80 - 120
Hammer Price \$55



384 **Western Postal History**, 3 books: *The Pony Express, A Postal History*, by Frajola, Kramer and Walske, 2005, hard bound, 163 pages, beautifully illustrated in color and black & white, like new; *Letters of Gold*, by Jesse L. Coburn, 1984, hard bound, 389 pages, well illustrated in black & white, a very detailed treatment of California postal history through 1869, nearly new; and *The Panama Route 1848-1869*, 1970 reprint of the 1943 edition, hard bound, 316 pages, no illustrations, useful maritime history, like new.

Estimate \$50 - 75
Unsold



385 **Scott, U.S. Stamp Catalogue Specialized**, 1972 edition, softbound. Estimate \$20 - 30
Hammer Price \$14