

The
COLLECTOR
Series



Sale 41

October 16, 2021

– Featuring –

**Stamps from the United States,
British Commonwealth and Asia**



**Golden
Oak** Online
Auctions

TABLE OF CONTENTS

U.S., British Commonwealth and Asia

Beginning at 11:00 AM Eastern time (10:00 AM Central time, 8:00 AM Pacific time)

United States

1847 Issue	1-2
1851 Issue	3-13
1857 Issue	14-31
1861-1866 Issue	32-45
1867 Grilled Issues	46-51
1869 Pictorial Issue	52-67
1870-1890 Bank Note Co. Issues	68-75
1893 Columbian Issue	76-92
1894-1898 Bureau Issues	93-97
1898 Trans-Mississippi Issue	98-101
1901-1907 Issues	102-110
1909-1912 Washington-Franklin Issues	111-113
1913-1915 Panama-Pacific Issue	114-115
1914-1919 Washington-Franklin Issues	116-125
1922-1929 Issues	126-142
1932-1997 Issues	143-150
Airmail	151-166
Special Delivery and Registry	167-172
Postage Due	173-175
Offices in China and Officials	176-182
Telegraph Stamps	183-185
Duck Stamps	186-197
Test Stamps and Collections	198-201
Philatelic Literature	202-204
Hawaii	205

British Commonwealth

Australia to Bechuanaland	206-209
Canada and Provinces	210-218
Cyprus and Falklands	219-221
Great Britain	222-226
Hong Kong to South West Africa	227-235

Asia

Asia Collection	236
China	237-244
Japan	245-250
Korea	251-254
Mongolia to Viet Nam	255-259


Worldwide

Collection	260
----------------------	-----

United States


1847 Issue



- 1  **1847, 5¢ red brown (Scott 1)**, large margins all around, tied on a blue cover by deep blue and nicely struck "Troy, N.Y. Jan 25" c.d.s., no other cancels, a neat 1850 cover, Extremely Fine. Scott \$425. Estimate \$400 - 600

This cover bearing the popular and appealing Troy, N.Y. marking would be perfect for an exhibition page.



- 2  **1847, 5¢ dark brown (Scott 1a)**, very large margins and crisp color, used with neat manuscript docketing of 1849 usage on a blue cover tied by a superb strike of a delicate deep blue c.d.s. "Troy, N.Y./May 4", addressed to a lady in New Hampshire, Very Fine. Scott \$500. Estimate \$400 - 600

1851 Issue

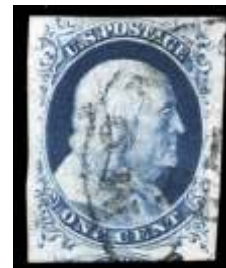


- 3 ○ **1851, 1¢ blue, type Ia (Scott 6)**, horizontal pair, position 98-99L4, huge margins at bottom (showing type characteristics clearly), in at top; couple small repaired faults, Fine appearance, an attractive and affordable example of an extremely rare classic. Scott \$23,000.

Estimate \$8,000 - 12,000



- 4 ○ **1851, 1¢ blue, type II (Scott 7)**, position 92L2, large to huge margins including sheet margin at bottom, town cancels, Extremely Fine. Scott \$135. Estimate \$120 - 150



- 5 ○ **1852, 1¢ blue, type IV (Scott 9)**, position 83R1L, margins ample to huge including parts of the next stamp at bottom, Very Fine to Extremely Fine. Scott \$95. Estimate \$75 - 100



- 6 ○ **1856, 5¢ red brown (Scott 12)**, 4 margins including sheet margin at left, Charleston, S.C. c.d.s., almost Very Fine. Scott \$750.
Estimate \$500 - 750



- 7 ○ **1855, 10¢ green, type I (Scott 13)**, position 91R1, an uncommonly lovely example with ample to large margins all around, neat town cancel, Very Fine. Scott \$750. Estimate \$600 - 800



- 8 ○ **1855, 10¢ green, type II (Scott 14)**, position 10L1, an uncommonly nice example of this type, with ample to huge margins all around including sheet margin at right, and a neat Annapolis 1857 cancel, Very Fine to Extremely Fine. Scott \$145.
Estimate \$120 - 150



- 9 ○ **1855, 10¢ green, type II (Scott 14)**, a used gem with large margins all around, grid cancel, Extremely Fine and choice. Scott \$140.
Estimate \$100 - 150



- 10 ○田 **1855, 10¢ green, types II & III (Scott 14,15)**, a rare combination block of 4, type II at top and type III at bottom, with mostly ample to large margins except just touching at left, town cancels; a tiny trivial corner crease at bottom left, Fine to Very Fine overall; with 1984 P.F. certificate for block of 6 (the top 2 stamps were faulty and have been removed). Scott \$3,500. Estimate \$2,000 - 3,000



- 11 ○ **1855, 10¢ green, type III (Scott 15)**, position 61L1, ample to large margins all around including sheet margin at left, Very Fine. Scott \$145.
Estimate \$120 - 150



- 12 ○ **1851, 12¢ gray black (Scott 17)**, an unusually nice example of this issue, with clear to large margins all around, lightly struck town cancel, Very Fine to Extremely Fine. Scott \$250.
Estimate \$200 - 300



- 13 ○田 1851, 12¢ gray black (Scott 17), a rare block of 4, position 26-37R1, large margins at top but just in at bottom, very light red cancel; vertical crease between the stamps, Very Fine appearing at top to Nearly Fine at bottom. Scott \$5,500.
Estimate \$2,500 - 3,500

1857 Issue



- 14 ○ 1857, 1¢ blue, type V (Scott 24), beautifully well centered within huge jumbo margins, neat Buffalo, N.Y. 1859 c.d.s., Extremely Fine and choice. Scott \$40. Estimate \$40 - 60



- 15 ○ 1857, 3¢ rose, type I, lines on bust and bottom of medallion circle recut (Scott 25 var.), position 47R6 (plated by Chase), N.Y. town cancel, Fine, a scarce and wonderful item for the 1857 issue specialist. Scott \$1,750.
Estimate \$1,200 - 1,500



- 16 ○ 1857, 3¢ dull red, type IV (Scott 26A), unusually well centered for this issue, very bright and fresh, face free cancel, Very Fine to Extremely Fine. Scott \$150. Estimate \$150 - 200



- 17 ○ **1859, 5¢ brown, type I (Scott 29),** nice color, grid cancels, Fine to Very Fine. Scott \$350.
Estimate \$75 - 100



- 21 ○ **1857, 12¢ black, plate I (Scott 36),** nicely centered for this issue, lightly struck red cancel, almost Very Fine. Scott \$320.
Estimate \$200 - 300



- 18 ○ **1860, 5¢ brown, type II (Scott 30A),** lovely centering and bright fresh color, neat Boston PAID cancel, Very Fine. Scott \$300.
Estimate \$200 - 300



- 22 ○ **1857, 12¢ black, plate I (Scott 36),** red grid cancel, Fine to Very Fine. Scott \$320.
Estimate \$100 - 150



- 19 ○ **1857, 10¢ green, type II (Scott 32),** position 55R1, very bright and fresh, lightly struck red and black cancels, Fine to Very Fine. Scott \$190.
Estimate \$120 - 150



- 23 ○ **1857, 12¢ black, plate I (Scott 36),** horizontal pair, red grid cancels, Fine for the issue. Scott \$740.
Estimate \$120 - 150



- 20 ○ **1857, 10¢ green, type III (Scott 33),** Charleston, S.C. c.d.s., Fine to Very Fine. Scott \$190.
Estimate \$120 - 150



- 24 ▲田 1857, 12¢ black, plate I (Scott 36), a scarce and attractive block of 4, tied on small piece by neatly struck Mobile, Ala. c.d.s., Fine; with 1998 P.F. certificate. Scott \$2,750.
Estimate \$1,500 - 2,000



- 25 ○ 1859, 12¢ black, plate III (Scott 36B), well centered within margins that are *huge* for this issue, blue grid cancel, Very Fine to Extremely Fine. Scott \$260. Estimate \$200 - 300



- 26 ○ 1859, 12¢ black, plate III (Scott 36B), circular grid cancel, Fine. Scott \$250.
Estimate \$60 - 80



- 27 P 1860, 24¢ gray lilac, imperf proof on stamp paper (Scott 37P5), a beautiful bottom margin single, unused without gum (couple pencil notes on the reverse from an earlier expertizer); two light horizontal creases in the bottom sheet margin only (well away from design), Very Fine overall. Scott \$1,500. Estimate \$1,200 - 1,500



- 28 ○ 1860, 24¢ gray lilac (Scott 37), fresh and well centered, lightly struck face free cancel, Very Fine. Scott \$400. Estimate \$300 - 400



- 29 ○ 1860, 24¢ gray lilac (Scott 37), nicely centered, blue grid cancel, Fine to Very Fine. Scott \$420. Estimate \$150 - 200



- 30 P 1860, 30¢ orange, imperf proof on stamp paper (Scott 38P5), margins almost all around, unused without gum; couple small faults, Fine appearance, rare and undercataloged; with 1991 P.F. certificate as the former Scott 38a. Scott \$1,500. Estimate \$1,000 - 1,500

1861-1866 Issue



- 32 ○ 1861, 1¢ blue (Scott 63), near perfect centering, lightly struck c.d.s., Extremely Fine and choice. Scott \$45. Estimate \$40 - 60



- 31 ○ 1860, 90¢ blue (Scott 39), nicely centered, neat Boston PAID cancel; small faults (as nearly always) and repaired, almost Very Fine appearance, an attractive and affordable example of this rare classic; with 1978 P.F. certificate. Scott \$10,500. Estimate \$2,500 - 3,500



- 33 (★) 1861, 10¢ green (Scott 68), large margins, regummed, almost Very Fine. Scott \$375. Estimate \$150 - 200



- 34 ○ 1861, 10¢ green (Scott 68), well centered within unusually large margins, light target cancel, Very Fine. Scott \$55. Estimate \$60 - 80



- 35 ○ **1861, 12¢ black (Scott 69)**, beautiful centering and bright fresh color, San Francisco cog cancel, Very Fine. Scott \$95. Estimate \$75 - 100



- 39 ○ **1861, 30¢ orange (Scott 71)**, circle-of-wedges cancel and blue foreign mail cancel indicating usage to France, Fine. Scott \$225. Estimate \$40 - 60



- 36 P **1862, 24¢ red lilac, plate proof on card (Scott 70P4)**, large margins all around, Extremely Fine. Scott \$500. Estimate \$150 - 200



- 40 ○ **1861, 90¢ blue (Scott 72)**, excellent color, light cancel, Fine. Scott \$600. Estimate \$100 - 150



- 37 ○ **1862, 24¢ red lilac (Scott 70)**, rich luxurious color, neat grid of squares cancel, Fine. Scott \$300. Estimate \$50 - 75



- 41 ○ **1863, 2¢ black (Scott 73)**, a beautiful example with near perfect centering, lightly struck circle-of-wedges cancel, Extremely Fine and choice. Scott \$55. Estimate \$50 - 75



- 38 ○ **1861, 24¢ steel blue (Scott 70b)**, nicely centered, grid cancel, almost Very Fine. Scott \$850. Estimate \$200 - 300

1867 Grilled Issues



- 42 (★) 1863, 5¢ brown (Scott 76), bright rich color, unused without gum, Fine. Scott \$1,400. Estimate \$200 - 300



- 43 ○ 1863, 5¢ brown (Scott 76), exceptionally well centered, crossroads cancel, Very Fine. Scott \$125. Estimate \$100 - 150



- 44 ○ 1866, 15¢ black (Scott 77), unusually well centered, lightly struck circle-of-wedges cancel, Very Fine to Extremely Fine. Scott \$175. Estimate \$150 - 200



- 45 ★ 1863, 24¢ gray (Scott 78b), nicely centered for this issue, with fresh color, large part o.g. (disturbed by hinge removal), Fine. Scott \$2,750. Estimate \$300 - 400



- 46 ★ 1867, 1¢ blue, E. grill (Scott 86), bright color, o.g., hinged; small margin faults, otherwise Fine, an affordable example of a very scarce classic; with 2021 P.S.A.G. certificate. Scott \$3,000. Estimate \$300 - 400



- 47 ○ 1867, 10¢ green, E. grill (Scott 89), lovely centering and bright fresh color, red New York c.d.s., Very Fine. Scott \$400. Estimate \$350 - 500



- 48 ○ 1867, 12¢ black, E. grill (Scott 90), lightly canceled in blue, Fine. Scott \$400. Estimate \$100 - 150



- 49 ○ 1867, 10¢ yellow green, F. grill (Scott 96), nicely centered within large margins, grid cancel, Very Fine. Scott \$250. Estimate \$200 - 300



- 50 ○ 1867, 10¢ yellow green, F. grill, very thin paper (Scott 96 var.), lightly canceled, Fine. Scott \$270. Estimate \$60 - 80



- 51 ○ 1867, 15¢ black, F. grill (Scott 98), nicely centered, very bright and fresh, neat socked-on-the-nose target cancel, Very Fine. Scott \$275. Estimate \$250 - 350

1869 Pictorial Issue



- 52 ○ 1869, 1¢ Franklin (Scott 112), exceptionally well centered, with bright fresh color, and a neat "checkerboard" cancel, Very Fine to Extremely Fine. Scott \$130. Estimate \$120 - 150



- 53 ○ 1869, 2¢ Postrider (Scott 113), used with a Yokohama, Japan cross cancel, Fine; with 2020 Crowe certificate. Scott \$480. Estimate \$120 - 150



- 54 ○ 1869, 6¢ Washington (Scott 115), lovely centering and brilliant fresh color, cork cancel, Very Fine. Scott \$225. Estimate \$120 - 150



- 55 ○ 1869, 10¢ Eagle and Shield (Scott 116), superlative centering, neat circle-of-wedges cancel, Extremely Fine and choice. Scott \$110. Estimate \$100 - 150



- 56 ○ **1869, 12¢ S.S. Adriatic (Scott 117)**, a beauty with great centering and margins, faintly canceled, Extremely Fine and choice. Scott \$130. Estimate \$150 - 200



- 60 ○ **1869, 15¢ Landing of Columbus, type II (Scott 119)**, excellent centering and lightly canceled, Very Fine. Scott \$190. Estimate \$200 - 300



- 57 ○ **1869, 12¢ S.S. Adriatic (Scott 117)**, fresh and well centered, blue grid cancel (a premium cancel); small corner crease, otherwise Very Fine; with 2021 P.S.A.G. certificate. Scott \$280. Estimate \$75 - 100



- 61 ○ **1869, 24¢ Declaration of Independence (Scott 120)**, nicely centered, very bright and fresh, a fairly light mute cancel, almost Very Fine. Scott \$600. Estimate \$350 - 500



- 58 ○ **1869, 12¢ S.S. Adriatic (Scott 117)**, light grid cancel, Fine to Very Fine. Scott \$130. Estimate \$60 - 80



- 62 ○ **1869, 30¢ Eagle, Shield & Flags (Scott 121)**, unusually well centered, bright fresh color, a neat circle-of-wedges cancel, Extremely Fine and choice. Scott \$375. Estimate \$400 - 600



- 59 ○ **1869, 15¢ Landing of Columbus, type I (Scott 118)**, beautifully well centered within awesome margins; tiny trivial corner crease at top right, still Extremely Fine. Scott \$825. Estimate \$500 - 750



- 63 ○ **1869, 30¢ Eagle, Shield & Flags (Scott 121)**, nicely centered and with fresh bright color, an attractive example of this popular issue, fairly light cancel, almost Very Fine. Scott \$375. Estimate \$120 - 150



- 64 E 1869, 90¢ Washington essay, small numerals, in black & dull violet (Scott 122-E2b), plate on stamp paper, imperf, large margins all around, Extremely Fine. Scott \$275. Brazer 122E-Cc. Estimate \$150 - 200



- 65 E 1869, 90¢ Washington essay, small numerals, in black & red brown (Scott 122-E2b), plate on stamp paper, imperf, large margins all around, Extremely Fine. Scott \$275. Brazer 122E-Cc. Estimate \$150 - 200



- 66 ○ 1869, 90¢ Lincoln (Scott 122), a beautiful example of this high value, exceptionally well centered, with bright fresh color, lightly canceled, Extremely Fine and choice. Scott \$1,800. Estimate \$1,500 - 2,000



- 67 (★) 1869 (1875 Re-issue), 24¢ Declaration of Independence (Scott 130), unused without gum, Fine; with 1992 P.F. certificate. Scott \$900. Estimate \$250 - 350

1870-1890 Bank Note Co. Issues



- 68 ○ 1870, 12¢ Clay, N.B.N.C. printing (Scott 151), circle-of-wedges cancel, Fine to Very Fine. Scott \$200. Estimate \$50 - 75



- 69 ○ 1873, 10¢ Jefferson, C.B.N.C. printing (Scott 161), beautifully well centered within immense jumbo margins, light target cancel, Extremely Fine. Scott \$25. Estimate \$40 - 60



- 70 ○ 1879, 90¢ Perry, A.B.N.C. printing (Scott 191), well centered within large margins, New York registry cancel; a couple barely nibbed perfs, otherwise Very Fine. Scott \$375. Estimate \$150 - 200



71 ★★ 1882, 10¢ Jefferson, re-engraved (Scott 209), deep color and impression, o.g., never hinged, Fine. Scott \$475. Estimate \$100 - 150



72 ○ 1883, 2¢ Washington (Scott 210), essentially perfect centering within huge jumbo margins, fairly light grid cancel, Extremely Fine to Superb. Estimate \$40 - 60



73 ★ 1890, 4¢ Lincoln (Scott 222), beautifully well centered within stunningly large margins, o.g., slightly disturbed by hinge removal, an Extremely Fine jumbo. Scott \$80. Estimate \$120 - 150



74 ★ 1890, 10¢ Webster (Scott 226), vibrant color on bright paper amid jumbo margins - this is one *huge* stamp, o.g., hinged; minute thin spot near hinge, Very Fine to Extremely Fine. Scott \$160. Estimate \$60 - 80



75 ○ 1890, 90¢ Perry (Scott 229), an exceptionally choice example, beautifully well centered, beautifully struck New York registry cancel, Very Fine to Extremely Fine. Scott \$130. Estimate \$75 - 100

1893 Columbian Issue



76 ★★/★ 1893, 1¢ to 10¢ Columbians (Scott 230-237), o.g., 1¢, 2¢, 6¢ and 10¢ are never hinged, others with (more or less) glazed gum, 3¢ with paper hinge remnant, 6¢ with a minor corner crease, 10¢ with a gum crease, Fine to Very Fine overall. Scott \$638. Estimate \$100 - 150



77 ★★ 1893, 3¢ Columbian (Scott 232), beautifully fresh and well centered, pristine o.g., never hinged, Very Fine to Extremely Fine. Scott \$98. Estimate \$100 - 150



78 ○ 1893, 3¢ Columbian (Scott 232), a one-in-a-million used gem, almost perfectly centered and with a neat c.d.s., Superb. Estimate \$100 - 150



79 ★★ 1893, 4¢ Columbian (Scott 233), premium centering and brilliant fresh color, flawless o.g., never hinged, Very Fine to Extremely Fine. Scott \$150. Estimate \$100 - 150



80 ★★ 1893, 4¢ Columbian (Scott 233), rich bright color, o.g., never hinged (tiny gum skip), almost Very Fine. Scott \$140. Estimate \$75 - 100



81 ★★田 1893, 5¢ Columbian (Scott 234), block of 4, rich color, o.g., never hinged, Fine to Very Fine. Scott \$560. Estimate \$120 - 150



82 ★★ 1893, 6¢ Columbian (Scott 235), a lovely example with premium centering and bright fresh color, immaculate o.g., never hinged, Very Fine to Extremely Fine. Scott \$150.
Estimate \$120 - 150



86 ★ 1893, 50¢ Columbian (Scott 240), nicely centered, glazed o.g., almost Very Fine. Scott \$450.
Estimate \$150 - 200



83 P 1893, 8¢ Columbian, plate proof on card (Scott 236P4), large margins; hinge remnant on the reverse, Very Fine to Extremely Fine. Scott \$150.
Estimate \$60 - 80



87 ★ 1893, \$1 Columbian (Scott 241), o.g., hinge remnants and a spot of gum browning, Fine to Very Fine. Scott \$1,000.
Estimate \$250 - 350



84 ★ 1893, 15¢ Columbian (Scott 238), lovely centering and excellent color, o.g., hinged, Very Fine. Scott \$200.
Estimate \$150 - 200



88 (★) 1893, \$2 Columbian (Scott 242), regummed over a light crease, Fine to Very Fine appearance. Scott \$550.
Estimate \$100 - 150



85 ★★ 1893, 30¢ Columbian (Scott 239), handsomely well centered within oversized margins, and with excellent color, pristine o.g., never hinged, Very Fine. Scott \$675.
Estimate \$500 - 750



89 ★ 1893, \$3 Columbian (Scott 243), a beautiful example of this high value, superlatively well centered and with deep rich color, o.g., hinged, Extremely Fine. Scott \$1,500.
Estimate \$1,500 - 2,000

1894-1898 Bureau Issues



- 90 ★ 1893, \$3 Columbian (Scott 243), nice color, glazed o.g., hinge remnants; tiny thin speck, Fine to Very Fine appearance. Scott \$1,500. Estimate \$250 - 350



- 91 (★) 1893, \$4 Columbian (Scott 244), very bright and fresh, unused without gum, Fine to Very Fine. Scott \$1,100. Estimate \$300 - 400



- 92 ★ 1893, \$5 Columbian (Scott 245), glazed o.g., hinge remnants; faint horizontal crease, otherwise Fine to Very Fine. Scott \$2,400. Estimate \$400 - 600



- 93 P 1894, 4¢ Lincoln, imperf proof on stamp paper (Scott 254P5), bottom margin single, o.g., lightly hinged, Extremely Fine. Scott \$275 for pair. Estimate \$40 - 60



- 94 ★ 1894, \$1 Perry, type I, unwatermarked (Scott 261), excellent color, o.g., hinged, Fine to Very Fine. Scott \$1,000. Estimate \$250 - 350



- 95 ★ 1894, \$5 Marshall, unwatermarked (Scott 263), excellent color, o.g., hinge remnant; nibbed perf, about Fine, an affordable example of a rare mint high value. Scott \$4,000. Estimate \$400 - 600



- 96 ★★ 1895, 6¢ Garfield, D.L. watermark (Scott 271), rich color and sharp impression, o.g., never hinged, Fine. Scott \$325. Estimate \$50 - 75



- 97 ★★ 1895, 10¢ Webster, D.L. watermark (Scott 273), very bright and fresh, immaculate o.g., never hinged, Fine. Scott \$280. Estimate \$60 - 80

1898 Trans-Mississippi Issue



- 98 ★★ 1898, 4¢ Trans-Miss. (Scott 287), bright fresh color, o.g., never hinged, Fine. Scott \$330. Estimate \$100 - 150



- 99 ★ 1898, 10¢ Trans-Miss. (Scott 290), bright fresh color, o.g., lightly hinged, Fine to Very Fine; with photocopy of 2019 P.F. certificate for block. Scott \$140. Estimate \$40 - 60



- 100 ○ 1898, 50¢ Trans-Miss. (Scott 291), exceptionally well centered, duplex cancel, Very Fine. Scott \$175. Estimate \$120 - 150



- 101 ○ 1898, 50¢ Trans-Miss. (Scott 291), nicely centered for this issue, fairly light cancel, almost Very Fine. Scott \$175. Estimate \$75 - 100

1901-1907 Issues



102 ★★ 1901, 4¢ Pan-American (Scott 296), beautifully well centered and with bright fresh color, o.g., never hinged, Very Fine; with 2010 P.S.E. certificate. Scott \$170. Estimate \$120 - 150



103 ★★ 1901, 10¢ Pan-American (Scott 299), fresh color, o.g., never hinged, Fine. Scott \$300. Estimate \$50 - 75



104 ★ 1903, 2¢ Washington, booklet pane of 6 (Scott 301c), o.g., hinged twice at top and bottom, Fine to Very Fine. Scott \$500. Estimate \$120 - 150



105 ○ 1903, 3¢ Jackson (Scott 302), a one-in-a-million used gem, spectacularly well centered within within large margins, neat light c.d.s., Extremely Fine to Superb. Estimate \$40 - 60



106 ★★ 1903, 5¢ Lincoln (Scott 304), nicely centered, o.g., never hinged, almost Very Fine. Scott \$150. Estimate \$40 - 60



107 ★★ 1903, 10¢ Webster (Scott 307), o.g., never hinged, Fine to Very Fine. Scott \$150. Estimate \$40 - 60



108 ★★ 1902, 13¢ Harrison (Scott 308), fresh and well centered, o.g., never hinged, Very Fine to Extremely Fine. Scott \$100. Estimate \$75 - 100



109 ★★ 1907, Jamestown complete (Scott 328-330), excellent color, o.g., never hinged, Fine to Very Fine. Scott \$500. Estimate \$200 - 300



110 ★★田 1907, 5¢ Jamestown (Scott 330), block of 4, o.g., never hinged; natural gum skip across top two stamps, Fine to Very Fine. Scott \$1,400. Estimate \$200 - 300

1909-1912 Washington-Franklin Issues



111 ★★田 1909, 5¢ Washington, D.L. watermark, imperf (Scott 347), plate block of 6, o.g., never hinged, Very Fine to Extremely Fine. Scott \$500. Estimate \$200 - 300



112 ★ 1909, 1¢ Franklin, bluish paper (Scott 357), excellent color, o.g., small hinge remnant, Fine to Very Fine. Scott \$90. Estimate \$40 - 60



113 ○ 1912, 4¢ Washington, S.L. watermark, horizontal coil (Scott 395), bold New York Foreign Mail cancel, Extremely Fine. Scott \$65. Estimate \$50 - 75

1913-1915 Panama-Pacific Issue



114 ★ 1913, 5¢ Panama-Pacific, perf 12 (Scott 399), lovely centering and bright fresh color, o.g., very lightly hinged, Very Fine to Extremely Fine. Scott \$70. Estimate \$60 - 80

1914-1919 Washington-Franklin Issues



116 ★★ 1914, 10¢ Franklin, S.L. watermark, perf 10 (Scott 433), o.g., never hinged, Extremely Fine to Superb; with 2021 P.S.E. certificate graded XF-SUP 95. SMQ \$750. Estimate \$500 - 750



115 ★田 1914, 1¢ Panama-Pacific, perf 10 (Scott 401), top plate block of 6, nicely centered, gorgeous color and impression, slightly disturbed o.g., Very Fine. Scott \$400. Estimate \$150 - 200



117 ★★ 1914, 10¢ Franklin, S.L. watermark, perf 10 (Scott 433), o.g., never hinged, Very Fine; with 2021 P.S.E. certificate graded VF 80. Scott \$95. SMQ \$105. Estimate \$60 - 80



118 ★★ 1914, 10¢ Franklin, S.L. watermark, perf 10 (Scott 433), top strip of 4, well centered throughout, o.g., never hinged, Extremely Fine. Scott \$380. Estimate \$50 - 75



119 ★★/★ 1914, 1¢ Washington, S.L. watermark, horizontal rotary press coil (Scott 452), joint line pair, o.g., minimally hinged at right, never hinged at left; slightly trimmed at top, Fine to Very Fine; with 2019 P.S.E. certificate. Scott \$75. Estimate \$40 - 60

UNITED STATES: 1914-1919 Washington-Franklin Issues



- 120 ★★ 1916, 5¢ Washington, unwatermarked, perf 10 (Scott 466), o.g., never hinged, Very Fine to Extremely Fine. Scott \$150. Estimate \$100 - 150



- 123 ○ 1916, \$1 Franklin, unwatermarked, perf 10 (Scott 478), outstandingly well centered, lightly canceled, Very Fine to Extremely Fine. Scott \$28. Estimate \$40 - 60



- 121 ★★田 1916, 12¢ Franklin, unwatermarked, perf 10 (Scott 474), block of 4, bright and fresh, o.g., never hinged, Fine to Very Fine. Scott \$460. Estimate \$100 - 150



- 124 ★★ 1919, 5¢ Washington, unwatermarked, horizontal rotary press coil (Scott 496), joint line pair, o.g., never hinged, Fine to Very Fine; with 2019 P.S.A.G. certificate. Scott \$65. Estimate \$30 - 40



- 122 ○ 1917, 50¢ Franklin, unwatermarked, perf 10 (Scott 477), lightly canceled, Very Fine to Extremely Fine. Scott \$80. Estimate \$60 - 80



- 125 ★★田 1919, 3¢ Victory (Scott 537), block of 4, well centered throughout, o.g., never hinged, Very Fine. Scott \$80. Estimate \$40 - 60

1922-1929 Issues



126 ★★/★ 1922-25, regular issue, ½¢ to \$5 complete (Scott 551-573), full type set, but 3¢, 8¢, 10¢ and 25¢ are rotary and not counted in catalog value, o.g., mostly never hinged / some hinged, Fine to Very Fine. Scott \$667.

Estimate \$150 - 200



128 ★★ 1923, \$1 to \$5 high values (Scott 571-573), nicely centered, fresh, o.g., never hinged, mostly Very Fine. Scott \$385.

Estimate \$100 - 150



127 ★★田 1922, 15¢ Statue of Liberty (Scott 566), plate block of 6, a lovely multiple, o.g., never hinged, Very Fine. Scott \$400.

Estimate \$100 - 150



129 ★★ 1923, 1¢ Franklin, rotary press coil waste, perf 11 x 10 (Scott 578), an attractive example, o.g., never hinged (some offset on gum), Fine. Scott \$150.

Estimate \$40 - 60



130 ★★ 1923-26, Rotary press definitives, perf 10, 1¢ to 10¢ complete (Scott 581-591), o.g., never hinged, Fine to Very Fine. Scott \$376.
Estimate \$120 - 150



131 ★★/★田 1923, 2¢ Washington, rotary press coil waste (Scott 595), block of 4, bright intense color, o.g., never hinged at top, small hinge remnant at bottom, Fine to Very Fine. Scott \$1,380.
Estimate \$750 - 1,000



132 ★★ 1923, 1¢ Franklin, vertical rotary press coil (Scott 604), o.g., never hinged, Extremely Fine to Superb; with 2021 P.S.E. certificate graded XF-SUP 95. SMQ \$85. Estimate \$60 - 80



133 ★★田 1923, 2¢ Harding, rotary press printing (Scott 612), block of 4, a lovely well centered block, o.g., never hinged, Very Fine. Scott \$130.
Estimate \$60 - 80



134 ★★ 1925, Lexington-Concord complete (Scott 617-619), exceptionally well centered within large margins, o.g., never hinged, Extremely Fine. Scott \$36. Estimate \$30 - 40



136 ★★/★田 1925, 17¢ Wilson (Scott 623), plate block of 6, well centered, o.g., lightly hinged at top, 4 stamps never hinged, Very Fine. Scott \$250. Estimate \$75 - 100



135 ★★田 1926, 13¢ Harrison (Scott 622), plate block of 6, o.g., never hinged, Fine to Very Fine. Scott \$210. Estimate \$50 - 75



137 ★★ 1926, White Plains souvenir sheet (Scott 630), well centered throughout, o.g., never hinged, Very Fine. Scott \$500. Estimate \$200 - 300



138 ★★ 1929, Kans., 1¢ to 10¢ complete (Scott 658-668), o.g., never hinged, Fine to Very Fine. Scott \$432. Estimate \$120 - 150



139 ★★田 1929, Kans., 1¢ to 10¢ complete (Scott 658-668), blocks of 4, a lovely complete set, o.g., never hinged, Fine to Very Fine. Scott \$1,726. Estimate \$400 - 600



140 ★★ 1929, 8¢ Kans. (Scott 666), outstandingly well centered, with flawless o.g., never hinged, Extremely Fine and choice. Scott \$145. Estimate \$75 - 100



141 ★★ 1929, Nebr., 1¢ to 10¢ complete (Scott 669-679), o.g., never hinged, Fine to Very Fine. Scott \$531. Estimate \$150 - 200



142 ★★ 1929, 4¢ Nebr. (Scott 673), a marvelously choice gem with essentially perfect centering, o.g., never hinged, Extremely Fine to Superb. Scott \$35. Estimate \$40 - 60

1932-1997 Issues



143 ★★ 1932, 6¢ Garfield, rotary press printing, horizontal coil (Scott 723), o.g., never hinged, Extremely Fine to Superb; with 2021 P.S.E. certificate graded XF-SUP 95. SMQ \$140. Estimate \$80 - 120



144 ★★ 1932, 6¢ Garfield, rotary press printing, horizontal coil (Scott 723), pair, o.g., never hinged, Very Fine to Extremely Fine; with 2021 P.S.E. certificate graded VF-XF 85. Scott \$33. SMQ \$45. Estimate \$30 - 40



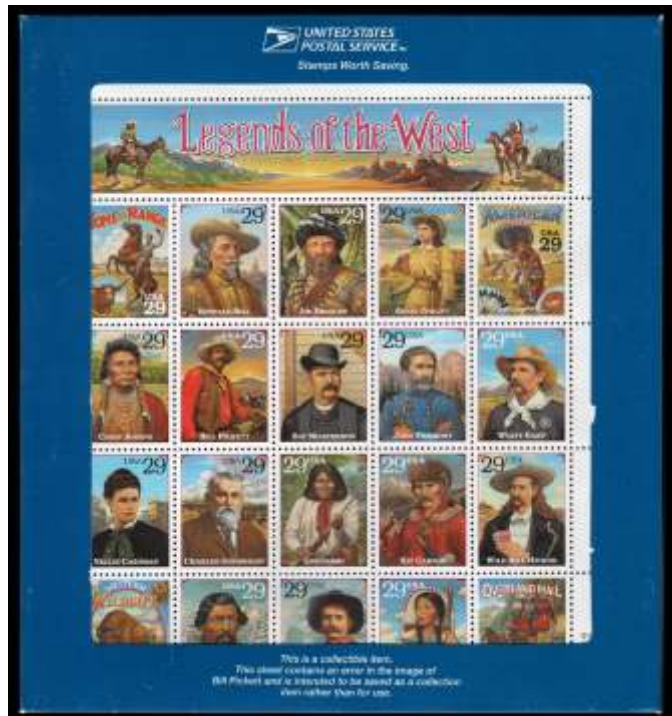
145 ★ 1936, 3¢ Texas (Scott 776), Superb; with 2021 P.S.E. certificate graded SUP 98. SMQ \$95. Estimate \$60 - 80



146 ★★ 1940, 5¢ Elias Howe (Scott 892), a gem, perfect in every respect, o.g., never hinged, Superb. Estimate \$40 - 60



147 ★★田 1960, 4¢ Water Conservation, spectacular foldover error (Scott 1150 var.), complete sheet of 50, folded between the 1st and 2nd vertical rows, yielding a partial strip of 3 after the gutter, o.g., never hinged, Very Fine. Estimate \$120 - 150



148 ★★田 1994, 29¢ Legends of the West, recalled (Scott 2870), full pane of 20, still in the unopened original packing by the U.S.P.S., o.g., never hinged, Very Fine to Extremely Fine. Scott \$125. Estimate \$120 - 150



149 ★★田 1997, 32¢ Bugs Bunny, self-adhesive (Scott 3137), o.g., never hinged, Extremely Fine. Scott \$450. Estimate \$300 - 400



150 ★田 1997, 32¢ Bugs Bunny, self-adhesive, pane of 10 (Scott 3138), die cutting extends through the backing paper, Extremely Fine. Scott \$100. Estimate \$75 - 100

Airmail



151 ★★ Airmail, 1918-23, First and Second Issues complete (Scott C1-C6), o.g., never hinged, Fine to Very Fine. Scott \$645. Estimate \$150 - 200



152 ★★★ Airmail, 1918-23, First and Second Issues complete (Scott C1-C6), o.g., C1, C3 and C6 are never hinged, others hinged, Fine to Very Fine. Scott \$508. Estimate \$120 - 150



153 ★★ Airmail, 1918, 16¢ Jenny (Scott C2), o.g., never hinged, Fine to Very Fine. Scott \$120. Estimate \$40 - 60

UNITED STATES: Airmail



154 ★ **Airmail, 1918, 24¢ Jenny (Scott C3)**, a lovely example, well centered, o.g., hinged, Very Fine. Scott \$65. Estimate \$30 - 40



158 ★★ **Airmail, 1923, 24¢ Biplane (Scott C6)**, bright color, o.g., never hinged, Fine to Very Fine. Scott \$130. Estimate \$30 - 40



155 ★★ **Airmail, 1923, 8¢ Propeller (Scott C4)**, near perfect centering within large margins, a beauty, o.g., never hinged, Extremely Fine. Scott \$35. Estimate \$40 - 60



159 ○ **Airmail, 1923, 24¢ Biplane (Scott C6)**, a used gem, lightly canceled, and with near perfect centering, Extremely Fine. Scott \$28. Estimate \$40 - 60



156 ★★ **Airmail, 1923, 16¢ Winged Emblem (Scott C5)**, well centered, o.g., never hinged (tiny gum skip and some offset on gum), Very Fine. Scott \$120. Estimate \$50 - 75



160 ★★田 **Airmail, 1927, 20¢ Map & Planes (Scott C9)**, left plate block of 6, perfectly centered throughout, o.g., never hinged (couple light gum skips), Extremely Fine. Scott \$95. Estimate \$40 - 60



157 ★★ **Airmail, 1923, 16¢ Winged Emblem (Scott C5)**, lovely centering and bright fresh color, o.g., never hinged, almost Very Fine. Scott \$120. Estimate \$50 - 75



- 161 ★★田 Airmail, 1927, 10¢ Lindbergh (Scott C10), an exceptionally choice plate block of 6, beautifully well centered throughout, o.g., never hinged, Extremely Fine. Scott \$130.
Estimate \$75 - 100



- 162 ★★ Airmail, 1928, 10¢ Lindbergh, booklet pane of 3 (Scott C10a), o.g., never hinged, Fine to Very Fine. Scott \$115. Estimate \$40 - 60



- 163 ★ Airmail, 1933, 50¢ "Chicago" Zeppelin (Scott C18), 3 well centered examples, o.g., lightly hinged, Very Fine. Scott \$135.
Estimate \$50 - 75



- 164 ○ Airmail, 1933, 50¢ "Chicago" Zeppelin (Scott C18), 2 well centered used examples, Extremely Fine. Scott \$95. Estimate \$40 - 60



- 165 ★★ Airmail, 1941, 10¢ Transport (Scott C27), o.g., never hinged, Superb; with 2021 P.S.E. certificate graded SUP 98. SMQ \$175.
Estimate \$80 - 120



166 ★★ Airmail booklet, 1963, \$2, red on pink cover (Scott BKC12), complete and unexploded, with 5 panes of C64b, o.g., never hinged, Fine to Very Fine. Scott \$275. Estimate \$50 - 75

Special Delivery and Registry



167 ○ Special Delivery, 1893, 10¢ orange (Scott E3), a used gem, marvelously well centered, lightly canceled, Extremely Fine. Scott \$50. Estimate \$40 - 60



168 ★ Special Delivery, 1895, 10¢ blue (Scott E5), nicely centered, with deep rich color on bright paper, o.g., hinged, almost Very Fine. Scott \$210. Estimate \$60 - 80



169 ○ Special Delivery, 1908, 10¢ green (Scott E7), beautiful centering, light duplex cancel, Very Fine to Extremely Fine. Scott \$50. Estimate \$40 - 60



- 170 ★★ **Special Delivery, 1911, 10¢ ultramarine (Scott E8)**, o.g., never hinged (very faint gum bend), Very Fine. Scott \$250.
Estimate \$150 - 200



- 171 ★★ **Special Delivery, 1917, 10¢ ultramarine (Scott E11)**, jumbo margins, o.g., never hinged, Very Fine; with 2005 P.S.E. certificate. Scott \$45.
Estimate \$40 - 60



- 172 ★★ **Registry, 1911, 10¢ ultramarine (Scott F1)**, plate number single, o.g., never hinged, Fine to Very Fine. Scott \$160. Estimate \$60 - 80

Postage Due



- 173 ★ **Postage Due, 1895, 10¢ deep claret, D.L. watermark (Scott J42)**, exceptionally well centered, o.g., lightly hinged, Very Fine. Scott \$110.
Estimate \$75 - 100



- 174 ○ **Postage Due, 1916, 2¢ rose, unwatermarked, perf 10 (Scott J60)**, New Orleans experimental Bureau precancel, Extremely Fine. Scott \$40.
Estimate \$40 - 60



- 175 ★★田 **Postage Due, 1917, 1¢ carmine rose, unwatermarked, perf 11 (Scott J61)**, bottom plate block of 30, o.g., never hinged (some offset on gum and gum skips); some perf separations at top right not affecting the plate block of 6, Fine to Very Fine overall. Scott \$460.
Estimate \$100 - 150

Offices in China and Officials



- 176 ★★/★田 Offices in China, 1919, 6¢ on 3¢ violet (Scott K3), right plate block of 6, o.g., hinge remnant (2 bottom stamps never hinged), Fine. Scott \$675. Estimate \$200 - 300



- 177 ★★ Offices in China, 1919, 30¢ on 15¢ gray (Scott K12), o.g., never hinged, Fine to Very Fine. Scott \$200. Estimate \$50 - 75



- 178 ★ Agriculture Dept., 1873, 10¢ yellow (Scott O5), marvelously well centered within exceptionally large margins, part o.g., Very Fine; with 2021 Crowe certificate. Scott \$525. Estimate \$200 - 300



- 179 ★ Treasury Dept., 1873, 12¢ brown (Scott O78), lovely bright fresh color, o.g., lightly hinged, Fine. Scott \$300. Estimate \$50 - 75



- 180 ★★ Treasury Dept., 1873, 90¢ brown (Scott O82), excellent color, o.g., never hinged (small gum skip), Fine. Scott \$475 for hinged. Estimate \$150 - 200



- 181 ★ War Dept., 1873, 12¢ rose (Scott O89), fresh and well centered, slightly disturbed o.g., lightly hinged, Very Fine. Scott \$275. Estimate \$120 - 150



- 182 ★ War Dept., 1873, 30¢ rose (Scott O92), lovely centering and bright fresh color, o.g., small hinge remnant, Very Fine to Extremely Fine. Scott \$130. Estimate \$75 - 100

Telegraph Stamps



183 ★★ Postal Telegraph Co., 1920, dark blue, handstamped with date in single line numerals (Scott 15T49B), glazed o.g., never hinged, Extremely Fine. Scott \$825. Estimate \$200 - 300



185 ★★ Postal Telegraph Co., 1942, 25¢ pale blue, Armed Forces official (Scott 15T030), fresh, o.g., never hinged, Very Fine to Extremely Fine. Scott \$65. Estimate \$35 - 50



184 ★★ Postal Telegraph Co., 1942, 5¢ pink, Armed Forces official (Scott 15T029), post office fresh, o.g., never hinged, Very Fine to Extremely Fine. Scott \$55. Estimate \$35 - 50

Duck Stamps



- 186 ★ **Hunting Permit, 1934, \$1 Mallards (Scott RW1)**, vibrant color and impression amid luxurious margins, o.g., hinged (missing some gum), Extremely Fine. Scott \$300. Estimate \$200 - 300



- 187 (★) **Hunting Permit, 1934, \$1 Mallards (Scott RW1)**, well centered, unused without gum, Very Fine. Scott \$175. Estimate \$40 - 60



- 188 ★ **Hunting Permit, 1938, \$1 Pintail Drakes (Scott RW5)**, deep color and sharp impression, o.g., lightly hinged, Fine. Scott \$425. Estimate \$50 - 75



- 189 ★ **Hunting Permit, 1939, \$1 Green-Winged Teals (Scott RW6)**, nicely centered, o.g., hinged, almost Very Fine. Scott \$115. Estimate \$40 - 60



- 190 ★★ **Hunting Permit, 1945, \$1 Shoveller Ducks (Scott RW12)**, top plate number single, o.g., never hinged, Fine to Very Fine. Scott \$100. Estimate \$40 - 60



- 191 ★★ **Hunting Permit, 1946, \$1 Redhead Ducks (Scott RW13)**, exceptionally beautiful, would likely grade 90 or better, o.g., never hinged, Very Fine to Extremely Fine; with 2019 P.S.E. certificate. Scott \$50. Estimate \$40 - 60



192 ★★ Hunting Permit, 1956, \$2 American Merganser (Scott RW23), perfectly centered, o.g., never hinged, Extremely Fine. Scott \$85. Estimate \$40 - 60

193 ★★ Hunting Permit, 1968-94, 18 different plate number singles (Scott RW35//RW61), in mounts on White Ace pages or on cards. Includes 1968 and 1978-94, o.g., never hinged, Very Fine. Scott \$377. Estimate \$100 - 150



195 ★★ Hunting Permit, 1978-2005, group of 10 (Scott RW45//RW72), neat selection of beautiful duck stamps, o.g., never hinged, Extremely Fine. Scott \$180. Estimate \$100 - 150



194 ★★田 Hunting Permit, 1972, \$5 Emperor Geese and 1984, \$7.50 Widgeons (Scott RW39, RW51), plate blocks of 4, o.g., never hinged, Extremely Fine. Scott \$175. Estimate \$60 - 80



196 ★★ Hunting Permit, 2006, \$15 Ross's Goose (Scott RW73), o.g., never hinged, Extremely Fine to Superb; with 2006 P.S.E. certificate graded XF-SUP 95. Scott \$23. SMQ \$65. Estimate \$40 - 60



197 (★) Hunting Permit, 2007, \$15 Ring-necked Ducks, souvenir sheet (Scott RW74b), signed by the artist, without gum as issued, Extremely Fine. Scott \$125.
Estimate \$75 - 100

Test Stamps and Collections



198 ★★ Test Stamp, 1944-49, Multipost Commercial Controls coil, blue (Scott TD88), pair, o.g., never hinged, Very Fine to Extremely Fine. Scott \$45. Estimate \$30 - 40



199 ○ 1857-94, used collection balance, 31 different stamps, including #s 27 (with PFC mentioning faults), 31, 35 (2), 68, 78b, 91, 93, 100, 113, 114, 115, 117, 123, 149, 150, 151, 152, 160, 165, 218, 260 and a few others not mentioned, all are fresh with nice cancels, generally Fine to Very Fine, a few are Very Fine, a few just Fine. Scott \$5,040+.
Estimate \$400 - 600



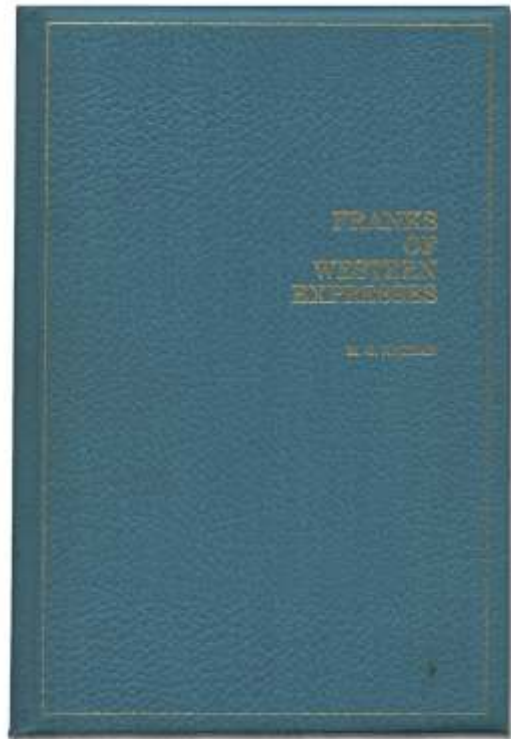
200 ○ 1866-1915, used classics group (Scott 77//440), including Nos. 77, 91, 95, 100, 113, 119, 153, 218, 240, 276, 285-291, 311, 400, 403 and 440. All with small faults. Centering and appearance varies from Very Fine to V.G. Scott \$4,015. Estimate \$300 - 400

201 ★ 1950's-90's, plethora of postage face value lot, house in two boxes, sheets, blocks and singles galore some in albums a treasure trove of various denominations. Face value \$4,007+. Estimate \$2,000 - 2,500

Philatelic Literature

202 Scott, 2020 Catalogs, a complete set of all 6 volumes, covering the world, plus the US Specialized Catalog. A clean set, minimally used, Very Fine. Original retail value approximately \$950. This would be a useful set for the collector interested in the listings and identifications - catalog values have not changed that drastically in the last 2 years. Keep in mind however that these books are heavy, and shipping via Fedex Ground will cost is likely \$35 or more. Estimate \$50 - 75

203 Scott, 2020 Classic Specialized Catalogue of Stamps and Covers 1840-1940, hard-bound edition, barely used. Estimate \$40 - 60



204 Nathan, M., Franks of Western Expresses, 1973, hard bound, 281 pages. Still a very useful guide to this area. Near pristine condition, Very Fine. Estimate \$30 - 40

Hawaii

205 ★/○ 1864-99, small collection, on Scott pages, some present both mint and used, many useful to pull out, note #5 repairs, catalogs \$1900 not counted and #15 too faulty catalogs \$650 also not counted, a neat group overall, generally Fine to Very Fine. Scott approximately \$1,500. Estimate \$300 - 400

British Commonwealth

Australia to Bechuanaland



- 206 ○ **Australia, 1915, Kangaroo and Map, 2s brown (Scott 43)**, 2nd watermark, lightly canceled, Fine to Very Fine. Scott \$110. SG 29; £120 (\$160). Estimate \$40 - 60



- 207 ★★ **Bahamas, 1942, King George VI, 1s brownish gray & scarlet, thin chalky paper (Scott 110d)**, brownish o.g., never hinged, Very Fine. Scott \$575. SG 155a; £950 (\$1,300). Estimate \$200 - 300



- 208 ★★田 **Bahamas, 1973, Queen Elizabeth II Pictorial issue, the scarcer watermark varieties complete (Scott 317a-330a)**, blocks of 4, o.g., never hinged, Very Fine. Scott \$144. Estimate \$40 - 60



Ex 209

- 209 ★★ **Bechuanaland, 1938, King George VI definitives complete (Scott 124-136)**, a lovely set, o.g., never hinged, Very Fine. Scott \$110. SG 118/28; £110 (\$150). Estimate \$50 - 75

Canada and Provinces

- 210 ★/○ **Canadian Provinces: Newfoundland, 1857-1924, collector's mint and used balance**, approximately 70 mostly different stamps, all neatly arranged and identified on 2 Vario pages, in nice condition overall, the unused stamps are mainly with o.g., generally Fine to Very Fine. Scott \$3,000+. Estimate \$250 - 350



- 211 ★★ **Canada, 1897, Queen Victoria Jubilee, 1/2¢ black (Scott 50)**, bright and fresh, nicely centered, o.g., never hinged, Fine to Very Fine. Scott \$300. Estimate \$60 - 80



- 212 ★★/★田 **Canada, 1897, Queen Victoria Jubilee, 1/2¢ black (Scott 50)**, block of 4, bright and fresh, o.g., lightly hinged at top, never hinged at bottom, Fine to Very Fine. Scott \$770. Estimate \$150 - 200



- 213 ★★ **Canada, 1897, Queen Victoria Jubilee, 6¢ yellow brown (Scott 55)**, a lovely corner margin single, nicely centered and with bright rich color, o.g., never hinged (with a tiny bit of offset on the gum), Very Fine. Scott \$575. Estimate \$200 - 300



- 214 ○ **Canada, 1908, King Edward VII, 50¢ purple (Scott 95)**, unusually large margins, lightly canceled, Very Fine. Scott \$175. Estimate \$50 - 75



- 215 ★★田 **Canada, 1924, King George V "Admiral", 7¢ red brown, dry printing (Scott 114)**, block of 4, o.g., never hinged, Fine to Very Fine. Scott \$220. Estimate \$40 - 60



- 216 ★★ **Canada, 1922, King George V “Admiral” coil, 2¢ green (Scott 128), pair, o.g., never hinged, Fine to Very Fine. Scott \$100. Estimate \$30 - 40**



- 217 ★★ **Canada, 1924, King George V “Admiral”, 3¢ carmine coil, die I (Scott 130), o.g., never hinged, Fine to Very Fine. Scott \$140. Estimate \$40 - 60**



- 218 ★★田 **Canada, Airmail, 1932, 6¢ on 5¢ brown olive (Scott C3), block of 4, nicely centered, o.g., never hinged, Very Fine. Scott \$88. Estimate \$30 - 40**

Cyprus and Falklands



- 219 ★★ **Cyprus, 1963, Europa complete (Scott 219-221), o.g., never hinged, Very Fine. Scott \$76. SG 224/6. Estimate \$40 - 60**

- 220 ★ **Falkland Islands, 1964-90, neat mint accumulation, nearly 200 sets all identified and housed in glassine envelopes which appear to be mostly complete sets and singles as issued, very light duplication, o.g., lightly hinged, Fine to Very Fine. Scott approximately \$2,000. Estimate \$150 - 200**



Ex 221

- 221 ★★/★ **Falkland Islands Dependencies, 1948, King George VI & Map complete, re-issue with clearer map (Scott 1L1-1L8 vars.), o.g., mostly lightly hinged (couple low values n.h.), Fine to Very Fine. Scott \$130. SG G9/16; £100 (\$140). Estimate \$40 - 60**

Great Britain



- 222 ○ **Great Britain, 1883, Queen Victoria, 2s6d lilac on white paper, Anchor watermark (Scott 96), an unusually nice example, with a neat London 1889 circular date stamp, Very Fine. Scott \$248. SG 178; £160 (\$220).**
Estimate \$60 - 80



- 223 ○ **Great Britain, 1883, Queen Victoria, 2s6d lilac on white paper, Anchor watermark (Scott 96), well centered, neat London 1885 cancel, Very Fine. Scott \$165. SG 178; £160 (\$220).**
Estimate \$40 - 60



- 224 ○ **Great Britain, 1919, King George V "Seahorse", Bradbury, Wilkinson printing, 5s rose red (Scott 180), lovely oval 16 DEC 22 registered cancels, Very Fine. Scott \$115. SG 416; £135 (\$180).**
Estimate \$30 - 40

- 225 ★/○ **Great Britain, 1840-1975, massive collection, neatly hinged in a home made album, meticulously cataloged, predominately used but the more modern issues are about 50/50 mint/used, the collection is replete with shade varieties, platings, watermark varieties etc., stamps with major flaws not counted in catalog value; a smattering of Postage Dues, Officials, and British Offices Abroad at the end, this is great for a dealer or a collector who wants to continue the search for plate varieties, etc.; hours of fun to be had here. Scott \$27,649+. Estimate \$1,500 - 2,000**

- 226 ○ **Great Britain, 1854-1919, collector's used balance, small group including Queen Victoria: 7 (two), 20b, 25, 28, 44, 55, 57, 60, 94-95, 96, 98-107, 108; King Edward VII: 139-140; and King George V Seahorses: 179-180 (two each), generally Fine or F.-V.F. Scott \$7,482.**
Estimate \$500 - 750

Hong Kong to South West Africa



- 227 ○ **Hong Kong, 1891, Queen Victoria, 20¢ on 30¢ gray green (Scott 52)**, lightly canceled, Fine. Scott \$140. SG 45a; £150 (\$200). Yang 42a. Estimate \$50 - 75



- 228 ○ **Hong Kong, 1891, Queen Victoria, 50¢ on 48¢ dull purple (Scott 54)**, light c.d.s., Fine. Scott \$300. SG 46; £325 (\$440). Yang 43. Estimate \$60 - 80



- 229 ○ **Ireland, 1935, Free State overprint on King George V re-engraved "Seahorse", 5s bright rose red (Scott 94)**, machine cancel, Fine to Very Fine. Scott \$210. SG 100; £90 (\$120). Estimate \$60 - 80



Ex 230

- 230 ★★ **Malay States: Pahang, 1950, Sultan Abu Bakar definitives complete (Scott 50-70)**, a bright fresh set, pristine o.g., never hinged, Very Fine. Scott \$104. SG 53/73; £120 (\$160). Estimate \$40 - 60



Ex 231

- 231 ★★ **Montserrat, 1942-48, King George VI, 1/2d-1£ complete, perf 14 (Scott 92-103)**, o.g., never hinged (2s6d with streaky gum), Very Fine. Scott \$85. SG 101a/12; £110 (\$150). Estimate \$40 - 60



- 232 ○ **New Zealand, 1927, King George V "Admiral", 3s pale mauve (Scott 183)**, Cowan paper, bold c.d.s., Very Fine. Scott \$175. SG 470; £190 (\$260). Estimate \$50 - 75



- 233 ○ **Rhodesia, 1892, Arms, £10 brown (Scott 19)**, c.d.s. and perfin, Fine to Very Fine. Scott \$800. SG 13; £700 (\$960).
Estimate \$120 - 150



Ex 234

- 234 ★★ **Seychelles, 1952, King George VI pictorial definitives complete (Scott 151-171)**, o.g., never hinged, Very Fine. Scott \$88. SG 158/72; £90 (\$120).
Estimate \$40 - 60



Ex 235

- 235 ★ **South West Africa, 1938, Voortrekker Centenary Memorial complete (Scott B5-B8)**, bilingual pairs, o.g., hinged, Very Fine. Scott \$109. SG 105/8; £110 (\$150).
Estimate \$40 - 60

Asia

Asia Collection

- 236 ★/○ **Asia, 1930's-80's, mint and used miscellany**, housed on stock pages in a large binder. Much is on dealer cards and identified. There is quite a variety of material ranging from earlier material to modern mint n.h. sets. Areas represented including China (Republic, Manchukuo, Taiwan and PRC including Liberated Areas), Indochina, Korea and Thailand. Some duplication of course, with many useful items.
Estimate \$200 - 300

China



- 237 ○ **China, 1888, Small Dragon, 1c bright green, clean-cut perf 11½-12 (Scott 13)**, beautifully well centered, a gem, neat blue chop cancel, Extremely Fine. Scott \$60. Chan 19.
Estimate \$40 - 60



- 238 (★) **China, 1943, Hupeh surcharge with 2 vertical bars on East Szechuan surch. on Dr. Sun Yat-sen, 50¢ on 16¢ olive brown (Scott 528s)**, without gum as issued, Very Fine. Scott \$100. Chan 663.
Estimate \$30 - 40



- 239 ★★ **China (People's Republic), 1965, Tsunyi Conference (C109) complete (Scott 818-820)**, o.g., never hinged; #818 (Mao and Map) with tiny thin, otherwise Fine to Very Fine. Scott \$275. Estimate \$75 - 100



- 242 ★★ **China (People's Republic), 1984, "Beauties Wearing Flowers" souvenir sheet (T89M) (Scott 1904)**, post office fresh, o.g., never hinged, Very Fine. Scott \$180. Estimate \$60 - 80



Ex 240

- 240 (★)田 **China (People's Republic), 1969, "Chinese People" Woodcuts (RW2) complete, perf 11½ (Scott 1016a-1018a)**, blocks of 4, without gum as issued, Very Fine, the 10f is scarce, and listed but not priced mint in Scott (\$900 as a used single). Estimate \$40 - 60



- 241 ★★ **China (People's Republic), 1983, "The Western Chamber" souvenir sheet (T82M) (Scott 1844)**, o.g., never hinged. Scott \$155. Estimate \$50 - 75

- 243 ★ **China (People's Republic), 1949-67, eclectic collection**, mostly mint n.h. or without gum as issued, much in complete sets, housed in order in binder with slipcase, some better items with issues but overall very clean with nice appearance and many medium priced sets to extract; all imaged on our website, Fine to Very Fine. Scott approximately \$1,500. Estimate \$200 - 300



- 244 ★/○ **China: Taiwan, 1950-2011, duplicated mostly mint collections**, housed in Minkus plus 3 Palo albums (all hingeless). Earlier issues used, then mostly mint from 1950's to end with many complete sets throughout. Modern issues are virtually complete mint n.h. Some issues are present both mint and used, generally Very Fine. Scott approximately \$6,000. Estimate \$750 - 1,000

Japan



- 245 ○ **Japan, 1874, Cherry Blossom, 4s rose, foreign wove paper, syllabic 1 ("i") (Scott 35),** Fine to Very Fine. Scott \$475. J.S.C.A. 31; 40,000 yen (\$360). Estimate \$100 - 150



- 246 ★ **Japan, 1938-39, 1st Showa Series Coils, ½s-14s complete (Scott 276-279),** o.g., lightly hinged, Fine to Very Fine. Scott \$172. J.S.C.A. 240-243; 34,900 yen (\$310). Estimate \$60 - 80



- 247 ★★ **Japan, 1946, Postal Services Anniversary souvenir sheet, 2nd printing (Scott 378a),** o.g., never hinged, Very Fine. Scott \$200. J.S.C.A. C101; 26,000 yen (\$230). Estimate \$75 - 100



- 248 ★ **Japan, 1949, 8y Philatelic Week (Scott 479),** o.g., lightly hinged, Very Fine. Scott \$150. J.S.C.A. C173; 65,000 yen (\$580). Estimate \$50 - 75



Ex 249

- 249 ★★ **Japan, 1952, Chubu-Sangaku National Park and Bandai-Asahi National Park souvenir sheets (Scott 564a, 572a),** each with folder, o.g., never hinged, Very Fine. Scott \$180. J.S.C.A. P64, P69; 38,000 yen (\$340). Estimate \$75 - 100

- 250 ★ **Japan, 1894-1951, mint collection,** housed on White Ace Album pages in a binder includes singles, sets and some of the popular souvenir sheets some even having the folders as issued, a lovely neatly mounted collection, generally Fine to Very Fine. Scott \$2,789+. Estimate \$300 - 400

Korea



- 251 ★ **Korea, 1900-01, Imperial Symbols, 5ch pink, 15ch gray and 20ch red brown, all perf 11 (Scott 23, 26, 27), fresh colors, o.g., mostly lightly hinged, Fine to Very Fine. Scott \$200. Estimate \$75 - 100**



- 252 ★ **Korea (South), 1967, Redrawn definitives complete (Scott 582-584), o.g., lightly hinged, Very Fine. Scott \$131. Estimate \$50 - 75**



- 254 ★★ **Korea (South), 1971, Paintings, 2 different issues in se-tenant strips (Scott 785b, 794b), o.g., never hinged, Very Fine. Scott \$73. Estimate \$30 - 40**



- 253 ★★ **Korea (South), 1968, Mexico Olympic Games complete (Scott 616-623), se-tenant pairs, o.g., never hinged, Very Fine. Scott \$140. Estimate \$40 - 60**

Mongolia to Viet Nam



- 255 ○ **Mongolia, 1926, violet "Postage" overprint on Revenue stamp, \$1 brown & salmon (Scott 22), a nice used example of this scarce stamp, Very Fine. Scott \$475.**
 Estimate \$150 - 200



- 256 ○ **Nepal, 1881-1948, small mostly used and very original collection, on hand-made pages put together by a dealer in Katmandu, Nepal, approximately 90 stamps total, including a few tête-bêche pairs. Some faults as would be expected but mostly 4 margin stamps. An interesting and original lot from the top of the world, generally Fine to Very Fine. Scott approximately \$2,000.**
 Estimate \$200 - 300

- 257 ★/○ **Philippines, 1857-1965, mint and used collection, housed in a Scott Specialty album. Early issues with occasional faults as typical, including some without gum. Mostly mint after 1945, well filled after 1947, much in hingeless mounts. Includes some imperfs as well, much Fine to Very Fine. Scott approximately \$3,200.**
 Estimate \$400 - 600



- 258 ★★ **Thailand, 1963-71, King Bhumibol complete (Scott 397-411A), o.g., never hinged (3 low values with glaze spots on gum, c.v. \$18), Very Fine. Scott \$408.**
 Estimate \$120 - 150



- 259 ★★ **Viet Nam (North), 1963, 20xu Fish souvenir sheet, plus 1982, Ho Chi Minh souvenir sheet (Scott 266a, 1171), o.g., never hinged, Fine to Very Fine. Scott \$115.** Estimate \$40 - 60

Worldwide

- 260** ★/○ **Worldwide, 1941-45, Collection,**
housed in a Scott International Postage Album,
from A-Z including a bit of U.S., a great lot to add to
or pull things out of for your own album, plus many
things to offer retail featuring semi posts and post-
age dues from Bermuda, Chile, Belgian Congo,
Cub, Falkland Islands, Fiji, Gilbert and Ellice Is-
lands, Nicaragu, Niue, Portugal, Spain, Sweden ad
Zanzibar. Scott \$733+. Estimate \$100 - 150