

The COLLECTOR *Series*



Sale 38
July 10, 2021
— Featuring —
**United States & Worldwide
Stamps and Postal History**



**Golden
Oak** Online
Auctions

Collectors Series Sale 38

Beginning at 11:00 AM Eastern time (10:00 AM Central time, 8:00 AM Pacific time)

United States

Postmasters' Provisionals1-3
1847-1851 Issues4-10
1857 Issue11-18
1861-1866 Issue19-37
1867 Grilled Issues38-49
1869 Pictorial Issue50-53
1870-1888 Bank Note Co. Issues54-70
1890-1898 Issues71-93
1901-1917 Issues94-111
1922-1929 Issues112-125
1931-1986 Issues126-135
Airmail136-144
Postage Due145-148
Newspaper Stamps and Parcel Post149-151
Locals, Booklets, Duck Stamps152-155
Collections156-165

Foreign Countries

Singles and Sets166-194
Collections195-216

United States

Postmasters' Provisionals



- 1 ○ **New York, N.Y., 1846, 5¢ black on bluish, signed "ACM" connected (Scott 9X1);** top left corner chipped and cut close at bottom right, Very Good. Scott \$475. Estimate \$50 - 75



- 2 ★ **Providence, R.I., 1846, 5¢ gray black (Scott 10X1),** margins close but clearing; small thin, Fine appearance. Scott \$350. Estimate \$75 - 100

Rare St. Louis "Bear"



- 3 ○ **St. Louis, Mo., 1846, 10¢ black on gray lilac (Scott 11X5),** type II, position 4, pen cancel, margins all around, almost Very Fine; with 2021 P.S.A.G. certificate, an exceptionally nice, fault-free example of this legendary early classic. Scott \$12,500. Estimate \$6,000 - 8,000

1847-1851 Issues



- 4 ○ **1847, 5¢ dark brown (Scott 1a),** light red cancel; margins almost all around (cut close and left and bottom), still a lovely example, about Fine. Scott \$750. Estimate \$200 - 300



- 5 ○ **1847, 5¢ dark brown (Scott 1a),** red grid cancel, margins all around; light vertical crease, Fine appearance. Scott \$750. Estimate \$150 - 200



- 6 ○ **1851, 1¢ blue, type II (Scott 7),** town cancel, margins mostly large to huge including parts of the next stamp at top (bit close at bottom right), deep rich color and sharp impression, Very Fine to Extremely Fine. Scott \$135. Estimate \$100 - 150



- 7 ○ **1852, 1¢ blue, type IV (Scott 9)**, large margins including parts of the next stamp at bottom; tiny thin speck, otherwise Extremely Fine. Scott \$95. Estimate \$50 - 75



- 8 ○ **1855, 10¢ green, type III (Scott 15)**, light town cancel, nicely centered amid four ample margins, fresh color, Very Fine. Scott \$140. Estimate \$75 - 100



- 9 ○ **1851, 12¢ gray black (Scott 17)**, faint red grid cancel, margins all around; expertly repaired thin, Fine appearance. Scott \$280. Estimate \$50 - 75



- 10 ○ **1851, 12¢ gray black (Scott 17)**, horizontal pair, grid cancels, large margins almost all around; tiny scissors cur in margin between stamps, otherwise Fine to Very Fine. Scott \$575. Estimate \$100 - 150

1857 Issue



- 11 ○ **1857, 1¢ blue, type IIIa (Scott 22)**, light circular date stamp, vibrant color on crisp white paper; reperfed at top, Very Good to Fine. Scott \$475. Estimate \$60 - 80



- 12 ★★/★田 **1857, 3¢ dull red, type III (Scott 26)**, block of 4, o.g., hinged at left, never hinged at right, decent centering for this narrow-margined issue, about Fine, never hinged is very scarce for this issue. Scott \$450 as hinged. Estimate \$200 - 300



- 13 ○ **1857, 5¢ red brown, type I (Scott 28)**, circular date stamp, rich color; light corner crease and some nibbed perfs, otherwise Fine. Scott \$1,050. Estimate \$150 - 200



14

- 14 ○ 1859, 5¢ brown, type I (Scott 29), grid cancels, nice color, Fine to Very Fine. Scott \$350. Estimate \$80 - 120



15

- 15 (★) 1861, 5¢ orange brown, type II (Scott 30), unused without gum, deep rich color, Fine. Scott \$500. Estimate \$100 - 150



16

- 16 ○ 1860, 24¢ gray (Scott 37a), with black and red cancels, well centered; small faults, Very Fine appearance. Scott \$440. Estimate \$100 - 150



17

- 17 ○ 1860, 24¢ gray (Scott 37a), blue c.d.s., beautifully well centered; small faults, Very Fine appearance. Scott \$395. Estimate \$100 - 150



- 18 ○ 1860, 30¢ orange (Scott 38), red grid cancel, fresh and well centered for this narrow-margined issue; small thin, otherwise Very Fine. Scott \$500. Estimate \$150 - 200

1861-1866 Issue



- 19 ○ 1861, 5¢ buff (Scott 67), neat check-board cancel, nice color; reperfed at right, otherwise Fine. Scott \$750. Estimate \$150 - 200



- 20 ○ 1861, 12¢ black (Scott 69), neat red cancel, Fine. Scott \$120. Estimate \$40 - 60



- 21 P 1862, 24¢ red lilac, plate proof on card (Scott 70P4), large margins and great color, Extremely Fine. Scott \$500. Estimate \$250 - 350



- 22 ▲ 1862, 24¢ red lilac (Scott 70), tied on piece by grid cancel, addressed to London, with red NEW YORK PAID ALL alongside, nicely centered, Very Fine. Scott \$300. Estimate \$150 - 200



- 23 ▲ 1862, 24¢ brown lilac (Scott 70a), tied on piece by Boston oval PAID and red transit cancel, nicely centered (just a bit to the left), almost Very Fine. Scott \$365. Estimate \$100 - 150



- 24 ○ 1861, 24¢ steel blue (Scott 70b), neat San Francisco cog cancel, nicely centered; top left corner expertly added, beautiful Very Fine appearance. Scott \$850. Estimate \$150 - 200



- 25 (★) 1861, 30¢ orange (Scott 71), unused without gum, extraordinarily well centered and with bright fresh color, a lovely gem; faint pressed out horizontal crease, otherwise Extremely Fine; with 2021 P.F. certificate. Scott \$950. Estimate \$400 - 600



- 26 ○ 1861, 30¢ orange (Scott 71), circle-of-wedges cancel and blue foreign mail cancel indicating usage to France, Fine. Scott \$225. Estimate \$75 - 100



- 27 ○ 1861, 30¢ orange (Scott 71), fairly light cancel, excellent color, Fine. Scott \$225. Estimate \$60 - 80



- 28 ○ 1861, 30¢ orange (Scott 71), grid cancel and part of a red cancel (foreign mail usage), centered to left. Scott \$260. Estimate \$50 - 75



- 29 E 1861, 90¢ Washington essay, by Toppan, Carpenter & Co., in dark blue (Scott 72-E5a), complete design, die on India paper, cut to shape, deep rich color, Very Fine. Scott \$350.
Estimate \$150 - 200



30

- 30 ○ 1861, 90¢ blue (Scott 72), light cancel, excellent color, Fine. Scott \$600.
Estimate \$150 - 200



31

- 31 ○ 1861, 90¢ blue (Scott 72), blue cancel; tiny tear and small repaired thin, typical centering. Scott \$660.
Estimate \$100 - 150



32

- 32 ○ 1862, 5¢ red brown (Scott 75), with black and red cancels, well centered with deep rich color; small faults, otherwise Very Fine. Scott \$465.
Estimate \$100 - 150



33

- 33 (★) 1863, 5¢ brown (Scott 76), unused without gum, bright rich color, Fine. Scott \$1,400.
Estimate \$300 - 400



- 34 (★) 1863, 5¢ brown (Scott 76), regummed over tiny faults, rich color, Fine appearance. Scott \$550.
Estimate \$100 - 150



- 35 (★) 1863, 5¢ brown (Scott 76), regummed over repaired faults, deep rich color, Fine appearance. Scott \$550.
Estimate \$100 - 150



- 36 ○ 1863, 24¢ gray (Scott 78b), neat double target cancels, good color, Fine. Scott \$450.
Estimate \$100 - 150



- 37 ○ 1863, 24¢ gray (Scott 78b), horizontal strip of 3, circle-of-wedges cancels, nicely centered for this issue; tiny pinhole and a pulled perf on the right stamp, otherwise Fine to Very Fine. Scott \$1,350.
Estimate \$300 - 400

1867 Grilled Issues



- 38 ○ **1867, 2¢ black, D. grill (Scott 84)**, cork cancel, intense shade, centered to bottom right; corner crease at upper left, pulled perf lower right, Very Good to Fine; with 2021 P.S.A.G. certificate, *a scarce stamp*. Scott \$5,000.
Estimate \$750 - 1,000



- 39 ○ **1867, 12¢ intense black, Z. grill (Scott 85E)**, light quartered cork cancel; 2 short perfs (common with this issue) and a corner crease at top right, about Fine; with 2021 P.S.A.G. certificate. Scott \$2,300. Estimate \$400 - 600



- 40 ★ **1867, 1¢ blue, E. grill (Scott 86)**, o.g., hinged, bright color; small margin faults, otherwise Fine; with 2021 P.S.A.G. certificate. Scott \$3,000. Estimate \$600 - 800



- 41 ○ **1867, 10¢ green, E. grill (Scott 89)**, neat circle-of-wedges cancel, rich color, Fine. Scott \$325. Estimate \$60 - 80



- 42 ○ **1867, 12¢ black, E. grill (Scott 90)**, lightly canceled, nicely centered; small margin faults, otherwise Very Fine; with 2021 P.S.A.G. certificate. Scott \$375. Estimate \$75 - 100



- 43 ○ **1867, 15¢ black, E. grill (Scott 91)**, lightly cancelled, typical centering. Scott \$600. Estimate \$80 - 120



- 44 ○ **1867, 5¢ brown, F. grill (Scott 95)**, cork cancel, deep rich color, Fine. Scott \$850. Estimate \$150 - 200



- 45 ○ 1867, 12¢ black, F. grill (Scott 97), light cork cancel, deep color on bright white paper with clearly impressed grill, Fine. Scott \$250.
Estimate \$75 - 100



- 46 ○ 1867, 12¢ black, F. grill (Scott 97), grid cancel, bright and fresh, nearly Fine. Scott \$250.
Estimate \$50 - 75



- 47 ○ 1867, 15¢ black, F. grill (Scott 98), faint cancel, excellent color; sealed tear at right, otherwise Fine. Scott \$275. Estimate \$40 - 60



- 48 ○ 1867, 24¢ gray lilac, F. grill (Scott 99), blue grid cancel plus a faint black cancel at top, offset on the reverse, beautifully well centered; several small faults at left, otherwise Extremely Fine; with 2021 P.S.A.G. certificate. Scott \$1,500.
Estimate \$400 - 600



- 49 ○ 1867, 30¢ orange, F. grill (Scott 100), fancy leaf cancel (uncommon on high values); reperfed at right, otherwise Fine. Scott \$950.
Estimate \$200 - 300

1869 Pictorial Issue

- 50 ○ 1869, 1¢ Franklin (Scott 112); a few nibbed perfs, otherwise Fine. Scott \$130.
Estimate \$40 - 60



51

- 51 ○ 1869, 6¢ Washington (Scott 115), red grid cancels, good color; tiny thin speck, otherwise Fine. Scott \$300. Estimate \$50 - 75



52

- 52 ○ 1869, 15¢ Landing of Columbus, type II (Scott 119), fairly light cork cancel, bright and fresh; 2 faint creases, otherwise Fine. Scott \$190. Estimate \$50 - 75



- 53 P 1869, 30¢ Eagle, Shield & Flags, plate proof on card (Scott 121P4), large margins and bright fresh color, Extremely Fine. Scott \$170.
Estimate \$75 - 100

1870-1888 Bank Note Co. Issues



- 54 (★) 1870, 1¢ Franklin, N.B.N.C. printing (Scott 145), regummed, very bright and fresh; reperfed at right, Fine to Very Fine appearance. Scott \$240. Estimate \$60 - 80



- 55 ○ 1871, 7¢ Stanton, N.B.N.C. printing (Scott 149), neat fancy circle-of-wedges cancel, bright and fresh, Fine to Very Fine. Scott \$100. Estimate \$40 - 60



- 56 ○ 1870, 12¢ Clay, N.B.N.C. printing (Scott 151), grid cancel, attractive centering and color, almost Very Fine. Scott \$200. Estimate \$60 - 80



- 57 ○ 1870, 12¢ Clay, N.B.N.C. printing (Scott 151), red grid cancel; a couple blunt perfs at right, about Fine. Scott \$215. Estimate \$50 - 75



- 58 ○ 1870, 15¢ Webster, N.B.N.C. printing (Scott 152), blue mute cancel, very bright and fresh, almost Very Fine. Scott \$210. Estimate \$60 - 80



- 59 ○ 1870, 24¢ Scott, N.B.N.C. printing (Scott 153), cork cancel, fresh, Fine. Scott \$210. Estimate \$50 - 75



- 60 ○ 1870, 90¢ Perry, N.B.N.C. printing (Scott 155), lightly cancelled, deep rich color; a faint vertical crease, otherwise Fine to Very Fine. Scott \$325. Estimate \$75 - 100



- 61 ○ 1873, 15¢ Webster, C.B.N.C. printing (Scott 163), lightly struck socked-on-the-ear target cancel, vibrant color and impression, almost Very Fine. Scott \$150. Estimate \$60 - 80



- 62 ○ 1873, 90¢ Perry, C.B.N.C. printing (Scott 166), good color, Fine to Very Fine. Scott \$300. Estimate \$100 - 120



- 63 ★ 1879, 1¢ Franklin, A.B.N.C. printing (Scott 182), disturbed o.g., unusually bright rich color, Fine to Very Fine. Scott \$200. Estimate \$60 - 80



- 64 ○ 1879, 90¢ Perry, A.B.N.C. printing (Scott 191), neat registry cancel, rich color, Fine. Scott \$375. Estimate \$75 - 100



- 65 (★) 1882, 5¢ Garfield (Scott 205), regummed over an expertly repaired thin, fresh and nicely centered, almost Very Fine appearance. Scott \$90 as no gum. Estimate \$30 - 40



- 66 ○ 1882, 6¢ Lincoln re-engraved, rose (Scott 208), light duplex cancel, fresh and nicely centered, almost Very Fine. Scott \$110. Estimate \$50 - 75



- 67 ★田 1883, 2¢ Washington (Scott 210), a phenomenally well centered block of 4, part o.g. (it had been lightly stuck down), hinged, bright and fresh, Extremely Fine. Scott \$230. Estimate \$100 - 150



- 68 ★★ 1888, 4¢ Jackson (Scott 215), o.g., never hinged, bright color and intense impression, Fine to Very Fine. Scott \$525. Estimate \$150 - 200



- 69 ○ **1888, 90¢ Perry (Scott 218)**, light c.d.s.'s, well centered, a lovely stamp; tiny circular thin at bottom (probably from a stray perf that got stuck), otherwise Extremely Fine. Scott \$225.
Estimate \$60 - 80



- 70 ○ **1888, 90¢ Perry (Scott 218)**, duplex cancel, rich intense color; tiny thin at top next to a perf, otherwise Fine. Scott \$225.
Estimate \$40 - 60

1890-1898 Issues



- 71 ★★ **1890, 6¢ Garfield (Scott 224)**, o.g., never hinged, nicely centered, very bright and fresh, almost Very Fine; with photocopy of 2018 P.F. certificate for block. Scott \$160.
Estimate \$75 - 100



- 72 ✉ **1893, Columbian Exposition, Goldsmith postal cards, EX18** (World's Fair station cancel), EX23 (Mrs. Potter Palmer with/ name), EX46 Fine Arts Building, each postally used.
Estimate \$75 - 100



- 73 ★★ 1893, 1¢ Columbian (Scott 230), part imprint single with plate number, o.g., never hinged, Extremely Fine. Scott \$33.
Estimate \$50 - 75



- 74 ★★ 1893, 3¢ Columbian (Scott 232), o.g., never hinged, Extremely Fine and choice. Scott \$98.
Estimate \$200 - 300



- 75 ★★ 1893, 4¢ Columbian (Scott 233), o.g., never hinged, rich color and impression, Fine to Very Fine. Scott \$140.
Estimate \$60 - 80



- 76 ○ 1893, 50¢ Columbian (Scott 240), Boston parcel cancel, excellent color, Fine to Very Fine. Scott \$175.
Estimate \$50 - 75



- 77 (★) 1893, \$1 Columbian (Scott 241), regummed over a repaired shallow thin, good color; tiny trivial natural paper inclusion, Fine appearance. Scott \$500 as no gum.
Estimate \$100 - 150



- 78 (★) 1893, \$2 Columbian (Scott 242), unused without gum, excellent color, Fine to Very Fine. Scott \$500.
Estimate \$150 - 200



- 79 (★) 1893, \$4 Columbian (Scott 244), regummed, deep intense color, Fine to Very Fine. Scott \$1,000 as no gum.
Estimate \$300 - 400



- 80 ★★ 1894, 2¢ Washington, type I, pink color, unwatermarked (Scott 248), o.g., never hinged, brilliantly fresh color, almost Very Fine; with photocopy of 2019 P.F. certificate for block. Scott \$98.
Estimate \$40 - 60



- 81 ★★ 1894, 5¢ Grant, unwatermarked (Scott 255), o.g., never hinged (tiny stray perf adherence), fresh color, Fine. Scott \$360.
Estimate \$75 - 100



- 85 ★ 1894, \$5 Marshall, unwatermarked (Scott 263), o.g., hinge remnant; nibbed perf, about Fine. Scott \$4,000. Estimate \$600 - 800



- 82 ★ 1894, 50¢ Jefferson, unwatermarked (Scott 260), o.g. disturbed by hinge removal, rich color, Fine. Scott \$475. Estimate \$100 - 150



- 86 (★) 1895, \$2 Madison, D.L. watermark (Scott 277), unused without gum; sealed tear at right, Fine to Very Fine appearance. Scott \$375.
Estimate \$75 - 100



- 83 ★ 1894, \$1 Perry, type I, unwatermarked (Scott 261), o.g. disturbed by hinge removal, excellent color, Fine. Scott \$1,000.
Estimate \$250 - 350



- 87 ★ 1897, 2¢ Washington, pink, type IV (Scott 279Bg), plate number and imprint strip of 3, o.g., hinged, bright color, Fine to Very Fine. Scott \$190.
Estimate \$75 - 100



- 84 ★ 1894, \$1 Perry, type I, unwatermarked (Scott 261), o.g., hinged, deep rich color, Fine. Scott \$1,000.
Estimate \$250 - 350



- 88 ★★ 1898, 4¢ Trans-Miss. (Scott 287), o.g., never hinged, vibrant color, nicely centered, almost Very Fine. Scott \$330.
Estimate \$100 - 150



89

90

89 (★) 1898, 50¢ Trans-Miss. (Scott 291), expertly regummed; reperfed at left, otherwise Fine. Scott \$600 as o.g. Estimate \$60 - 80

90 ○ 1898, 50¢ Trans-Miss. (Scott 291), lightly canceled, Fine to Very Fine. Scott \$175. Estimate \$60 - 80



91 ★ 1898, \$1 Trans-Miss. (Scott 292), o.g., hinged, beautifully centered; small thin, lovely Very Fine appearance. Scott \$1,500. Estimate \$300 - 400



92 ○ 1898, \$1 Trans-Miss. (Scott 292), Philadelphia registry cancel, bright and fresh, Fine to Very Fine. Scott \$700. Estimate \$200 - 300



93 ★ 1898, \$2 Trans-Miss. (Scott 293), o.g., hinge remnant, excellent color, Fine. Scott \$1,900. Estimate \$400 - 600

1901-1917 Issues



94 ★★/★田 1901, 1¢ Pan-American (Scott 294), top plate block of 6, o.g., 4 stamps never hinged including the bottom row, a fresh and well centered plate block; small hinge remnant reinforcing separations in top selvage, small hinge remnant on top left stamp, large hinge remnant and thin on the top center stamp, otherwise Very Fine. Scott \$300. Estimate \$75 - 100



95 ★★ 1903, 6¢ Garfield (Scott 305), o.g., never hinged, Extremely Fine. Scott \$150. Estimate \$200 - 300



96 ★ 1903, 50¢ Jefferson (Scott 310), o.g., hinged, bright and fresh, Fine. Scott \$400. Estimate \$100 - 150



- 97 ★ 1903, \$1 Farragut (Scott 311), large part o.g., hinge remnant, bright fresh color; thinned, Fine to Very Fine appearance. Scott \$600.
Estimate \$120 - 150



- 98 ○ 1903, \$2 Madison (Scott 312), a beautiful stamp, well centered with fresh color and a fairly light duplex cancel; a tiny barely visible thin next to one of the right perfs and reperfed at right, Extremely Fine appearance. Scott \$200.
Estimate \$60 - 80



- 99 ★★ 1904, 1¢ Louisiana Purchase (Scott 323), imprint single, o.g., never hinged, lovely color and centering, almost Very Fine. Scott \$60.
Estimate \$30 - 40



- 100 ★★ 1907, Jamestown complete (Scott 328-330), o.g., never hinged, excellent color, Fine to Very Fine. Scott \$500. Estimate \$250 - 350



- 101 ★★ 1909, 2¢ Washington, D.L. watermark, vertical coil (Scott 349), o.g., never hinged, fresh, almost Very Fine. Scott \$225.
Estimate \$75 - 100



- 102 ★★ 1909, 5¢ Washington, D.L. watermark, vertical coil (Scott 351), o.g., never hinged, very bright and fresh, Fine. Scott \$325.
Estimate \$60 - 80



- 103 ★★ 1909, 4¢ Washington, D.L. watermark, horizontal coil (Scott 354), o.g., never hinged (gum wrinkle and skips), fresh and well centered, Very Fine. Scott \$425.
Estimate \$300 - 400



- 104 ★★田 1909, 2¢ Lincoln Centenary, imperf (Scott 368), plate block of 6, o.g., never hinged, Post Office fresh, almost Very Fine. Scott \$390. Estimate \$150 - 200



- 105 ★★ 1916, 4¢ Washington, S.L. watermark, horizontal rotary press coil (Scott 457), joint line pair, o.g., never hinged, fresh, Fine to Very Fine. Scott \$325. Estimate \$100 - 150



- 106 ★★田 1916, 12¢ Franklin, unwatermarked, perf 10 (Scott 474), block of 4, o.g., never hinged, bright and fresh, Fine to Very Fine. Scott \$460. Estimate \$150 - 200



107

- 107 ★ 1917, \$2 Madison, perf 10 (Scott 479), o.g., hinge remnant, well centered with great color, Very Fine. Scott \$210. Estimate \$150 - 200



108

- 108 ★ 1917, \$2 Madison, perf 10 (Scott 479), o.g., minimally hinged, bright and fresh, Fine to Very Fine. Scott \$210. Estimate \$75 - 100



- 109 ★ 1917, \$5 Marshall, perf 10 (Scott 480), o.g., small hinge remnant which has stained the gum in one small spot, beautifully well centered; tiny thin next to the hinge remnant, Extremely Fine appearance. Scott \$170. Estimate \$40 - 60



- 110 ★★/★田 1917, 5¢ Washington, rose color error, unwatermarked, perf 11 (Scott 505), the single error in a block of 9, o.g., error never hinged, fresh and nicely centered, Fine to Very Fine. Scott \$650 as hinged. Estimate \$250 - 350



- 111 ★★/★田 1917, 11¢ Franklin, unwatermarked, perf 11 (Scott 511), plate block of 6, o.g., lightly hinged at top, 4 stamps never hinged, Fine to Very Fine. Scott \$150. Estimate \$50 - 75

1922-1929 Issues



- 112 ★★ 1923, 7¢ McKinley (Scott 559), plate number single, o.g., never hinged, a gem, almost perfectly centered, Extremely Fine to Superb. Estimate \$40 - 60



- 113 ★★ 1923, \$1 to \$5 high values (Scott 571-573), o.g., never hinged, \$1 is F.-V.F., others are Very Fine. Scott \$385. Estimate \$150 - 200



- 114 ★★田 1923, \$1 Lincoln Memorial (Scott 571), bottom margin block of 4 with plate number, o.g., never hinged, deep radiant color, Fine to Very Fine. Scott \$300. Estimate \$100 - 150



- 115 ★★ 1923-26, Rotary press definitives, perf 10, 1¢ to 10¢ complete (Scott 581-591), o.g., never hinged, Fine to Very Fine. Scott \$376.
Estimate \$150 - 200



- 116 ★★/★ 1925, Norse-American complete (Scott 620-621), plate blocks of 8, o.g., 2¢ hinge reinforcements in selvage otherwise n.h.; 5¢ disturbed o.g.; 5¢ thinned. Scott \$725.
Estimate \$100 - 150



- 117 ★★ 1926, 13¢ Harrison (Scott 622), plate block of 6, o.g., never hinged; some minor vertical perf separations, Fine to Very Fine. Scott \$300.
Estimate \$100 - 150



- 118 ★★/★ 1925, 17¢ Wilson (Scott 623), plate block of 6, o.g., lightly hinged at top, 4 stamps never hinged, well centered, Very Fine. Scott \$250.
Estimate \$120 - 150



- 119 ★★ 1926, 5¢ Ericsson (Scott 628), o.g., never hinged, superlative centering, Extremely Fine to Superb.
Estimate \$30 - 40



- 120 ★★ 1926, White Plains souvenir sheet (Scott 630), o.g., never hinged, much better centered than usual, Very Fine. Scott \$500.
Estimate \$250 - 350



- 121 ★★ 1928, 2¢ Molly Pitcher (Scott 646), o.g., never hinged, Extremely Fine to Superb; with 2021 P.S.E. certificate graded XF-SUP 95. SMQ \$50.
Estimate \$30 - 40



- 122 ★★ 1929, Kans., 1¢ to 10¢ complete (Scott 658-668), o.g., never hinged, Fine to Very Fine. Scott \$432.
Estimate \$150 - 200



- 123 ★★ 1929, Nebr., 1¢ to 10¢ complete (Scott 669-679), o.g., never hinged, Fine to Very Fine. Scott \$531.
Estimate \$200 - 300



- 124 ★★ 1929, 2¢ Battle of Fallen Timbers (Scott 680), o.g., never hinged, Superb; with 2021 P.S.E. certificate graded Gem 100. SMQ \$400.
Estimate \$200 - 300



- 125 ★★ 1929, 2¢ Battle of Fallen Timbers (Scott 680), o.g., never hinged, perfect in every respect, Superb.
Estimate \$40 - 60

1931-1986 Issues



Ex 126

- 126 ★★田 1931, Rotary press definitives, 11¢ to 50¢ complete (Scott 692-701), plate blocks of 4, o.g., never hinged, Fine to Very Fine. Scott \$725.
Estimate \$200 - 300



- 127 ★★ 1936, 3¢ Texas (Scott 776), o.g., never hinged, Superb; with 2021 P.S.E. certificate graded SUP 98. SMQ \$95. Estimate \$60 - 80



- 128 ★★ 1936, 3¢ Rhode Island (Scott 777), o.g., never hinged, Superb; with 2021 P.S.E. certificate graded SUP 98. SMQ \$95. Estimate \$60 - 80



- 129 ★★田 1938, \$5 Coolidge (Scott 834), plate block of 4, o.g., never hinged, Very Fine. Scott \$325. Estimate \$150 - 200



- 130 ★田 1938, 3c Swedes and Finns, miscut arrow (Scott 836), block of 6 with plate number (no not a plate block), miscut such that a nearly full arrow is visible in the right selvage along with the full guideline (would normally be trimmed away and not visible to this extent; interesting EFO with striking appearance, o.g., lightly hinged, Very Fine to Extremely Fine. Estimate \$75 - 100



- 131 ★ 1939, 3c Printing Tercentenary (Scott 857), Superb; with 2021 P.S.E. certificate graded SUP 98. SMQ \$50. Estimate \$30 - 40



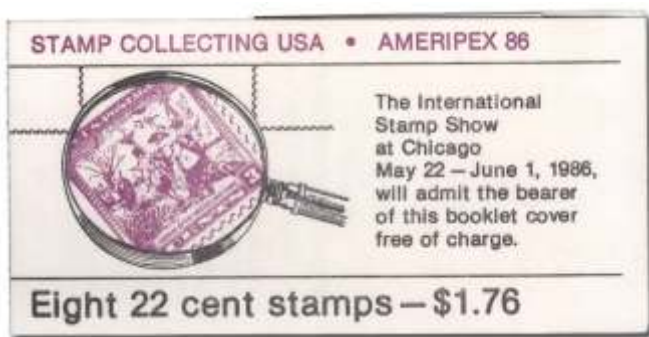
- 132 ★★ 1940, 5c Daniel French (Scott 887), a beautiful plate number single, o.g., never hinged, Extremely Fine to Superb; with 2019 P.S.E. certificate. Estimate \$30 - 40



- 133 ★★ 1954, 3c Kansas Territory (Scott 1061), o.g., never hinged, Superb; with 2021 P.S.E. certificate graded SUP 98. SMQ \$60. Estimate \$30 - 40



- 134 ★★ 1958, 3¢ Brussels Exhibition (Scott 1104), o.g., never hinged, Superb; with 2021 P.S.E. certificate graded SUP 98. SMQ \$55.
Estimate \$30 - 37



- 135 ★★ 1986, 22¢ Stamp Collecting, *black omitted on two stamps* (Scott 2201b), two booklet panes of 4 in unexploded booklet, o.g., never hinged, Extremely Fine. Scott \$50.
Estimate \$35 - 50

Airmail



- 136 ★★ Airmail, 1918-23, First and Second Issues complete (Scott C1-C6), o.g., never hinged, Fine to Very Fine. Scott \$645.
Estimate \$200 - 300



- 137 ★★ Airmail, 1918, 16¢ Jenny (Scott C2), immaculate Post Office fresh o.g., never hinged, lovely centering and bright fresh color, Very Fine; with 2019 P.F. certificate for block. Scott \$120.
Estimate \$75 - 100



- 138 ★★ Airmail, 1918, 24¢ Jenny (Scott C3), o.g., never hinged (minor gum bends), rich colors and beautifully centered, Extremely Fine. Scott \$130.
Estimate \$100 - 150



- 139 ★★ Airmail, 1923, Second Issue, 8¢ to 24¢ complete (Scott C4-C6), o.g., never hinged, Fine to Very Fine. Scott \$285.
Estimate \$100 - 150



- 140 ★★ **Airmail, 1927, 20¢ Map & Planes (Scott C9)**, o.g., never hinged, outstandingly choice, with essentially perfect centering, Extremely Fine to Superb. Scott \$13.

Estimate \$30 - 40



- 141 ★★ **Airmail, 1933, 50¢ "Chicago" Zeppelin (Scott C18)**, o.g., never hinged, Very Fine. Scott \$75.

Estimate \$40 - 60



- 142 ★★田 **Airmail, 1941-44, Transport complete (Scott C25-C31)**, plate blocks of 4, o.g., never hinged, Very Fine. Scott \$81. Estimate \$30 - 40



- 143 ★★ **Airmail, 1941, 10¢ Transport (Scott C27)**, o.g., never hinged, Superb; with 2021 P.S.E. certificate graded SUP 98. SMQ \$175.

Estimate \$80 - 120



- 144 ★★ **Airmail, 1941, 10¢ Transport (Scott C27)**, o.g., never hinged, Superb; with 2021 P.S.E. certificate graded SUP 98. SMQ \$175.

Estimate \$80 - 120

Postage Due



145

- 145 ★ **Postage Due, 1894, 1¢ deep claret (Scott J31)**, o.g., hinge remnant, vibrant color and razor sharp impression, Very Fine. Scott \$73.

Estimate \$35 - 50



146

- 146 ★ **Postage Due, 1895, 5¢ deep claret (Scott J41)**, o.g., lightly hinged twice, gorgeous color, Very Fine. Scott \$110. Estimate \$40 - 60



- 147 ○田 **Postage Due, 1897, 30¢ deep claret (Scott J43)**, block of 4, socked-on-the-nose c.d.s. Jan 31/ 1905/ SOUTH OMAHA NEB, block is o.g., n.h. despite the cancel, which likely paid the rate for an item but was never used on the actual mail, Fine to Very Fine. Scott \$450.

Estimate \$200 - 300



- 148 ★★田 **Postage Due, 1914, 1¢ carmine lake (Scott J52)**, block of 4, o.g., never hinged, post office fresh, Fine. Scott \$880 as n.h. singles. Estimate \$100 - 150

Newspaper Stamps and Parcel Post



- 149 ★ **Newspaper, 1897, \$50 dull rose, Bureau printing, D.L. watermark (Scott PR124)**, o.g., very lightly hinged, a gem with near perfect centering, Extremely Fine and choice. Scott \$75. Estimate \$75 - 100



- 150 ★ **Parcel Post, 1913, 50¢ Dairying (Scott Q10)**, o.g., hinged, gorgeous color and nicely centered, Very Fine. Scott \$200. Estimate \$75 - 100



- 151 ★ **Parcel Post, 1913, \$1 Fruit Growing (Scott Q12)**, o.g., hinged, dzzling bright color, Fine to Very Fine. Scott \$250. Estimate \$75 - 100

Locals, Booklets, Duck Stamps

- 152 **Local Posts and Forgeries group**, 330 various stamps, perfect for study and comparison by the Local Post enthusiast, o.g., some never hinged / some hinged, Fine to Very Fine for this. Estimate \$400 - 600

- 153 ★★ **Booklets, 1917-39, group of 7 (Scott BK56, BK67, BK80-82, BK90, BK92)**, all are complete and unexploded, o.g., never hinged, the key item is BK67 (c.v. \$650) with panes that range from Fine to V.G., Fine to Very Fine as a group. Scott \$805. Estimate \$200 - 300



- 154 ★★ **Hunting Permit, 1971, \$3 Cinnamon Teals (Scott RW38)**, o.g., never hinged, Extremely Fine; with 2005 P.S.E. certificate graded XF 90. SMQ \$90. Estimate \$60 - 80

- 155 ★ **Federal and State Duck Stamps, small group, mainly 1970's**, a colorful intro, Fine to Very Fine. Estimate \$40 - 60

Collections

- 156 ★/○ **Neatly organized dealer stock, 19th and 20th century.** In hundreds of glassines and two small binders, about 75-80% is used and the remainder is mint, definitely some hidden gems in here including nice plate blocks in the airmails, some nice officials and parcel posts; great for a dealer on eBay, overall quality is generally Fine to Very Fine. Scott \$19,170+. Estimate \$2,000 - 3,000
- 157 ★★/★ **Balance lot, 1869-1940,** housed in four stock books with some early Columbians and Trans-Mississippi, lots of plate number blocks from the 1920's, prexies, postage dues, parcel posts, loads of Washington Franklins not counted in catalog value and several 20th century items to get graded; a neat lot to retail, o.g., some never hinged / some hinged, predominantly mint, Fine to Very Fine. Scott \$1,965+. Estimate \$300 - 400
- 158 ★★/★ **Airmail, Special Delivery, Special Handling and Official Stamps, 1918-83, neat collection,** housed in a stock book with interesting plate number blocks, zip blocks, and booklet panes from C1-C131; CE1 and 2; E13- E23; O127-133 - some suitable to be graded, o.g., most never hinged / some hinged, Fine to Very Fine. Scott \$1,625+. Estimate \$250 - 350
- 159 ★ **Eclectic group of souvenir sheets, 1933-92,** in quantities, highlights include Sc. #730, 750 and 751 and 2433; perfect for retail sales or eBay! Very Fine to Extremely Fine. Scott \$550. Estimate \$100 - 150
- 160 ✉ **Waterbury fancy cancel group of postcards and covers, 1876-1880,** two covers and twelve postcards, mostly UX5 but a few UX7 all with lovely strikes of various Waterbury, CT cancels, many listed in Rohloff and rarity rated, a neat group for the specialist, Very Fine. Estimate \$400 - 600
- 161 ✉ **Foreign Mail, incoming and outgoing group, 1894-1920,** 11 covers and postcards mainly to interesting destinations from the U.S., with one incoming from Winnipeg Canada canceled by oval "Branch Dead Letter", other destinations include Cape of Good Hope, Denmark, England, India, Japan, New South Wales, Portugal, Russian Poland and Yugoslavia. Nice items retailing \$50 to \$300 each, around \$1300 retail total, generally Fine to Very Fine. Estimate \$400 - 600
- 162 ✉ **First flight and other airmail covers, small group, 1922-40,** includes 9 nice first flight covers from the 1920's-30's with neat cachets, plus some misc. including C.A.M. etc. Estimate \$150 - 200
- 163 ✉ **First day covers, a large group, 1946-93,** hundreds housed in four albums, heavy in the 1970's; beautiful lot. Estimate \$100 - 150
- 164 ★ **Massive face value lot,** in two large boxes neatly organized in file folders by denomination, we quit counting face when we got to the lower denominations...this is a great lot with many high values! Face value \$7,500++. Estimate \$4,000 - 6,000
- 165 ★ **Large accumulation of face value,** housed in 12 stockbooks and one envelope with loads of high values, includes plate number blocks, coil strips etc. Face value \$2,566+. Estimate \$1,200 - 1,500

Foreign Countries

Singles and Sets



- 166 ★/○ **Belgian Congo**, 1898, Belgian State and 1908, Belgian Colony, 2 different 3.50fr issues (Scott 29, 38), 1st is neatly canceled, the 2nd is o.g., hinge remnant, Fine to Very Fine. Scott \$178. Estimate \$60 - 80



- 167 ★ **Canada**, 1893, Queen Victoria "Widow's Weeds", 50c deep blue (Scott 47), o.g., very lightly hinged (light gum bend), very bright and fresh, Fine to Very Fine. Scott \$400. Estimate \$100 - 150



- 168 ★★ **Canada**, 1897, Queen Victoria Jubilee, 1/2c black (Scott 50), o.g., never hinged (ft gum wrinkle). Scott \$275. Estimate \$75 - 100



- 169 ★/○ **China**, 1888-97, small classics group of 10 (Scott 13//92), including used Scott #13, 14 (x5), 29 (with a lovely Customs cancel), 47 and 87, and unused #92 (part o.g.); occasional small faults (mainly perf flaws), otherwise Fine to Very Fine. Scott \$844. Estimate \$100 - 150



- 170 ○ **China**, 1888, Small Dragon, 1ca bright green, clean-cut perf 11½-12 (Scott 13. Chan 19), neat blue chop cancel, beautifully well centered, a gem, Extremely Fine. Scott \$60. Estimate \$60 - 80



- 171 ○ **China, 1888, Small Dragon, 3ca mauve, clean-cut perf 11½-12 (Scott 14. Chan 20)**, neat 1892 Chinkiang c.d.s., Fine to Very Fine. Scott \$125. Estimate \$75 - 100



- 172 ○ **China, 1888, Small Dragon, 5ca olive yellow, clean-cut perf 11½-12 (Scott 15. Chan 21)**, blue seal cancels, well centered, Very Fine. Scott \$175. Estimate \$100 - 150



- 173 ○ **China, 1897, Large Figures wide surcharge on Dowager, 1st printing, 1¢ on 1ca vermilion (Scott 39. Chan 48)**, unobtrusive Customs cancel, Fine. Scott \$300. Estimate \$150 - 200



- 174 ○ **China, 1897, Large 2¢ on 3¢ Red Revenue (Scott 80. Chan 88)**, light cancel (Canton?); small thin, Fine to Very Fine appearance. Scott \$400. Estimate \$60 - 80




- 175 ★/○ **China, Official Sealed, c. 1900, 2 different P.O. labels, one is canceled; thins on both, Fine to Very Fine appearance, seldom seen.** Estimate \$100 - 150




- 176 ○ **German States: Bavaria, 1849, First Issue, 1kr black, plate I (Scott 1. Michel 1 la)**, a lovely example with 4 full margins and a neat cogwheel and numeral "18" cancel (Mühlradstempel), Very Fine; with 1967 P.F. certificate. Scott \$2,250. Estimate \$600 - 800




- 177  **German States: Bavaria, 1862, 12kr yellow green (Scott 13. Michel 12),** margins almost all around, tied by numeral 26 cancel on an 1868 folded letter from Augsburg to Amsterdam, **Netherlands**, Very Fine. Scott \$400. Michel €320 (\$350). Estimate \$150 - 200



- 179  **Germany, 1931 (Jul 24-31), Polar Flight, Bordpost to Malyguin (Scott C42. Michel 458. Sieger 119C),** flown cover franked with 4m Polar Flight Zeppelin, Fine to Very Fine. Scott \$825. Michel €1,100 (\$1,190). Sieger €1,100 (\$1,190). Estimate \$250 - 350



- 178  **German States: Bavaria, 1862, 12kr yellow green (Scott 13. Michel 12),** margins all around, tied by numeral cancel on an 1869 folded letter sheet from Augsburg to Lyon, **France**, Very Fine. Scott \$400. Michel €320 (\$350). Estimate \$150 - 200



- 180  **Germany: Soviet Zone - General Issues, 1949, Goethe souvenir sheet (Scott 10NB11. Michel Block 6),** neat 1949 commemorative cancel, Very Fine. Scott \$400. Michel €300 (\$320). Estimate \$100 - 150



- 181 ★ **Italy, 1935, Aeronautical Salon at Milan complete** (Scott 345-348. Sassone 384-387), o.g., hinged, Fine to Very Fine. Scott \$208. Sassone €250 (\$270). Estimate \$50 - 75



- 182 ★ **Japan, 1877, Old Koban, 6s orange** (Scott 60. J.S.C.A. 69), o.g., hinge remnant, fresh color; couple tone specks on the gum, otherwise Fine to Very Fine. Scott \$200. J.S.C.A. 40,000 yen (\$360). Estimate \$75 - 100



- 183 ★ **Korea, 1900-01, Imperial Symbols, 5ch pink, 15ch gray and 20ch red brown, all perf 11** (Scott 23, 26, 27), o.g., mostly lightly hinged, fresh colors, Fine to Very Fine. Scott \$200. Estimate \$75 - 100



- 184 ★ **Korea, 1903, Falcon Issue, part set to the 20ch** (Scott 39-48), o.g., most with hinge remnants, good colors; 2ch thinned, otherwise Fine to Very Fine. Scott \$241. Estimate \$75 - 100



- 185 ○ **Netherlands, 1864, King William III, 15c orange** (Scott 6. Michel 6. NVPH 6), lightly canceled, Fine. Estimate \$40 - 60



- 186 ✉ **Netherlands, 1956, EUROPA complete, FDC** (Scott 368-369. Michel 683-684. NVPH 681-682), Very Fine. Michel €55 (\$60). Estimate \$30 - 40



- 187 **Netherlands**, 1936, 1949, 1950 & 1953, Child Welfare, 4 different issues complete, FDC's (Scott B90-93, B203-207, B219-223, B259-263. NVPH 289-292, 544-548, 563-567, E15), addressed, Very Fine.
Estimate \$150 - 200



- 189 **Netherlands**, 1950, Summer Welfare issue complete, FDC (Scott B208-B213. NVPH E1), addressed to Germany, Very Fine, a very scarce FDC. NVPH €1,600 (\$1,730).
Estimate \$300 - 400



- 188 **Netherlands**, 1947, Famous Men complete, FDC (Scott B175-B179. Michel 490-494. NVPH 500-503), Very Fine.
Estimate \$60 - 80



- 190 **Netherlands**, 1951-53, Summer Welfare issues complete, FDC's (Scott B224-228, B238-242, B249-253. NVPH E5, E9, E13), addressed, Very Fine. NVPH €535 (\$580).
Estimate \$100 - 150



- 191 **Portugal**, 1873, King Luiz, 240r pale violet, perf 12½ (Scott 49), numeral "1" grid cancel (Lisbon), beautifully well centered, Very Fine; with 2005 A.P.S. certificate, which mentions a trivial "weak UL perf tip". Scott \$1,050.
Estimate \$250 - 350



- 192  **South Africa, 1938, Voortrekker issue (Scott 79-80, B5-B8)**, a lovely unaddressed souvenir cover franked with various Voortrekker issues, all tied by Johannesburg 1949 "Voortrekker Monument" commemorative cancels, Fine to Very Fine. Estimate \$30 - 40



- 194 ★★ **Switzerland, 1953, Pro Juventute "Insect" miniature sheet of 24 (Scott B229a. Michel 590 var. Zumstein oZ41)**, o.g., never hinged, Very Fine. Scott \$375. Zumstein 500 SFr (\$550). Estimate \$100 - 150



- 193 ○ **Switzerland, 1951, LUNABA souvenir sheet (Scott B206. Michel Block 14. Zumstein 32)**, neat commemorative cancel (full o.g., lightly hinged), Very Fine. Scott \$190. Zumstein 270 SFr (\$300). Estimate \$60 - 80

Collections

- 195 ★/○ **Asia, 1890's-1970's, varied collection of mint and used**, including China Republic and Provinces used, some Japan Chrysanthemums, a few early PRC (some are reprints), a couple Vietnam War items including an interesting 1971 letter from a colonel, other collateral items - quite a mishmash. Imaged in full on our web site - have a look. Estimate \$150 - 200
- 196 ★/○ **Belgian Colonies, 1886-1926, strong classic collection**, hinged to old time Yvert European pages, with Belgian Congo 1-4, 12 used, 14-26, 29-30, 31-40 (some duplication), 41-44, nearly complete 1910 pictorial set, 86-87, 88-113, good selection of boxed Taxes handstamps; also good Ruanda Urundi with B3-11, condition and centering are both mixed as usual, generally Fine to Very Fine appearance. Scott \$1,385. Estimate \$300 - 400
- 197 ★/○ **Ethiopia and Liberia, 1860-1927, strong mint and used classic collections**, hinged to old time Yvert European pages, **Ethiopia** with over 60 different early classic issues, with good surcharge selection, **Liberia** with five seated Liberia issues and over 200 different classic Liberia stamps. Condition and centering are both mixed as usual, generally Fine to Very Fine. Scott \$969. Estimate \$200 - 300
- 198 ★/○ **France, 1849-1967, substantial collection**, neatly organized and mounted on home made pages, mostly used but a few mint, lovely shade varieties and cancels, catalog value adds up quickly, includes postage dues, airmails, officials, Offices Abroad, military frankings and a small amount of French Colonies, perfect for a dealer or the collector who wants to study and add to this; a neat collection all imaged on the website. Scott \$13,225+. Estimate \$1,500 - 2,000
- 199 ★/○ **German States, 1851-1920, extensive collection**. Predominately used and neatly mounted in a stockbook with page after page of sets from states including Baden, Bavaria, Brunswick, Hamburg, Hanover, Prussia, Thurn and Taxis (Northern and Southern Districts), Wurttemberg. Also some Offices in China, Offices in Morocco and German New Guinea. A lovely collection all imaged on our website. Scott \$24,017. Estimate \$2,000 - 3,000
- 200 ★ **German Colonies, 1880s-1920s, strong classic collection**, hinged to old time European pages, with German East Africa several early values on German Empire issues, a few Kaiser Yachts, Belgium Occupation N17-24, N25-29, nearly complete A.O. semi postals, German South West Africa a few early Empire overprints and Yacht issues, Germany offices in China nearly complete early Empire set, a few Germania overprints with a couple dollar value denominations, offices in Morocco 1-6, mostly complete Germania issues (only missing a few Pes. Denominations), Kiauchau a few Yachts, Mariana Islands a few Yachts, Ruanda Urundi mostly complete to 1931, Samoa a few early Express (probably reprints), good Palm Trees with surcharges and Provisional Govt. overprints, a few early Empire overprints, Yacht up to 3m, 103, decent amount of Samoa overprints on New Zealand issues, 142-53. Condition and centering are both mixed as usual, generally Fine to Very Fine. Scott \$2,266+. Estimate \$500 - 750
- 201 ★/○ **Great Britain, 1840-1975, massive collection**, neatly hinged in a home made album, meticulously cataloged, predominately used but the more modern issues are about 50/50 mint/used, the collection is replete with shade varieties, platings, watermark varieties etc., stamps with major flaws not counted in catalog value; a smattering of Postage Dues, Officials, and British Offices Abroad at the end, this is great for a dealer or a collector who wants to continue the search for plate varieties, etc.; hours of fun to be had here. Scott \$27,649+. Estimate \$3,000 - 4,000
- 202 ★ **Indonesia: Republic of the South Moluccas, small topical collection**, mostly mint, Fine to Very Fine. Estimate \$75 - 100
The "Republic of the South Moluccas" was a short lived entity which the main Indonesian government quickly suppressed in the 1950's. An American dealer, Henry Stolow, had spurious "local" issues printed in Vienna afterward for this by-then imaginary republic. Lovely topical appeal but they never did postal duty. An interesting sort of Cinderella issue. Philatelists may remember the roughly similar issues of Katanga in the 1960's.
- 203 ★★ **Israel, small assortment of complete sheets and booklets**, 136 complete sheets including 2nd Coins, TABUL and more, also a nice group of early booklets and some International Correspondence coupons, o.g., never hinged. Estimate \$300 - 400

- 204 ★/○ **Israel, 1949-83, mostly mint collection**, beautifully housed in five binders and neatly mounted, missing the 1948 first issues, about half is tabbed stamps and the other half is without tabs, most of this collection is mint but there are some occasional used items, catalogs approximately \$2800; also includes a lovely collection of covers commemorating the history of Israel in beautiful binders and not catalogued; truly a lovely high-quality lot for the dealer who wants to break it up into sets or the collector to wants to fill a lot of spaces; also included are new blank Minkus album pages for Israel, generally Very Fine.
Estimate \$600 - 800
- 205 ★ **Italian Colonies, 1910s-1920s, strong classic collection**, hinged to old time European pages, with Cyrenaica 1-4, 5-10, Manzoni set only missing high value, Victor Emmanuel, St. Francis of Assisi, Peace Semi Postal sets, Italy Offices in Tripoli 1-10, E1, Italy Aegean Islands Victor Emmanuel issue mostly complete (only missing a few 20c and unwatermarked), Libya Victor Emmanuel up to 1L, 1921 pictorial set, 1924 pictorial set mostly complete, missing key values, a few express and service commission stamps, several early parcel post and postage dues, Oltre Giuba a few overprinted early Italian issues, complete Maps, complete Semi-postals, Tripolitania Propagation of Faith set, Fascisti set, Holy Year and Peace semi postal sets. Condition and centering are both mixed as usual, generally Fine to Very Fine. Scott \$1,915+. Estimate \$500 - 750
- 206 ★ **Italian Colonies: Eritrea, 1893-1926, strong classic collection**, hinged to old time European pages, with mostly complete overprints on Victor Emmanuel issues, 48-50, several surcharges of Somalia issues, 65-68, 94-98, B5-10, a few special delivery and early postage dues, Q1, Q3. Condition and centering are both mixed as usual, generally Fine to Very Fine. Scott \$1,381. Estimate \$300 - 400
- 207 ★ **Italian Colonies: Somalia, 1906-1926, strong classic collection**, hinged to old time European pages, with good surcharges with 10-16, 18-20, 22-27, 40-50, 51-54, Fascisti set, Manzoni set (only missing high value), Holy Year semi postal set, Victor Emmanuel set, 1926 surcharge set, St. Francis of Assisi set, 1926 Victoria Emmanuel set (only missing stamp issued in 1930), J1-7, J10-11, J12-22 (missing 5L denomination), J23-30, J31-41, E1-6 and several early parcel post pairs. Condition and centering are both mixed as usual, generally Fine to Very Fine. Scott \$3,186. Estimate \$750 - 1,000
- 208 ★ **Netherlands Colonies, 1873-1926, strong classic collection**, hinged to old time European pages, with good surcharges with Netherlands Antilles William III (missing 30c and Gulden values), 13-17, Wilhelmina set, William III surcharges, partial 1904 and 1915 numeral and Wilhelmina sets, 70-72, a few earlier dues, Netherlands Indies 1, William III to 50c, numerals complete, Java to 1g (missing a few lower values), decent postage dues, Surinam William III (missing 30c and Gulden values), 1893 Wilhelmina complete, decent William III surcharges, 1913 numerals, mostly complete first postage dues set (missing key values), J17-32. Condition and centering are both mixed as usual, generally Fine to Very Fine. Scott \$1,875+. Estimate \$500 - 750
- 209 ★ **Palestine, mostly mint collection, 1918-45**, approximately 130 stamps in mounts on collector's pages, including some postage dues, a nice started collection of this area, generally Fine to Very Fine. Estimate \$200 - 300
- 210 ★ **Portuguese Colonies: Azores, 1868-1926, highly complete collection**, hinged to old time European pages, unchecked with 7-10, 14, 21-29, 33c, 34, 39, 40-42, 43, 45-51, 53a-54, 56-57, 61-62 (unchecked for perforations), 65-77, 78-84, 86, 93-100, 101-11, 112-25, 126-39, 141-48, 149-54, 61 values from Ceres issues (only missing some higher values), 238-57, 258-71, J1-21, Q1-12, Q15-17 and miscellaneous back of the book issues, condition and centering are both mixed as usual, generally Fine to Very Fine. Scott \$2,803. Estimate \$600 - 800
- 211 ★/○ **Portuguese Colonies: Madeira, 1868-1926, strong mint and used collection**, hinged to old time Yvert European pages, with 4, decent amount of first and second Luiz issues, complete da Gama, complete Ceres. Condition and centering are both mixed as usual, generally Fine to Very Fine. Scott \$1,201. Estimate \$200 - 300
- 212 **Russia, 1850's-1920's, small collection / assortment / miscellany including reference material**, a small stock page of odd values, plus some Imperial issues, plus the beginning of a study of Civil War issues, genuine and forgeries. This is your classic "what is it?" lot.
Estimate \$75 - 100

- 213 ★ **Worldwide, Old Time "Texas" estate lot**, 15 boxes full of philatelic fun, includes Worldwide, U.N. and U.S. stamps in albums, beautiful First Day Covers in albums, old world maps and gorgeous commemorative albums, there is surely something to please anyone in this untouched lot; we can ship this Fedex ground!
Estimate \$2,000 - 3,000
- 214 ★/○ **Worldwide, 1892-1954, eclectic collection**, housed in two Minkus Master Global Stamp Albums, a treasure trove of stamps just waiting for the collector to put into their own albums or continue with these, Fine. Scott \$2,500 +++.
Estimate \$500 - 750
- 215 ★/○ **Worldwide, 1941-45, Collection**, housed in a Scott International Postage Album, from A-Z including a bit of U.S., a great lot to add to or pull things out of for your own album, plus many things to offer retail. Estimate \$200 - 300
- 216 ★/○ **Worldwide, mish mash of stamps and covers**, two large boxes full of stamps and covers highlights include on Cuba, Argentina, Vatican, Israel, Germany and Columbia...even some U.S. stamps and covers; there are definitely some treasures in here just need to sift through it all! Very Good to Fine. Estimate \$200 - 300