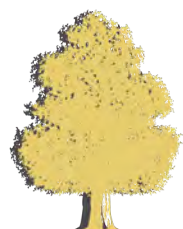


Auction 33
January 23, 2021
Online Only

WORLDWIDE
STAMPS &
POSTAL HISTORY



Golden
Oak | Online
Auctions



Autographs

| | |
|--|-------|
| Astronauts, Aviators, Military Leaders and Sportsmen | 1-10 |
| U.S. Statesmen and Presidents' Wives | 11-17 |

U.S. Postal History

| | |
|---|-------|
| Railroad Covers | 18-41 |
| Ship Covers | 42-47 |
| Advertising Covers | 48-52 |
| Patriotic Covers | 53-55 |
| Fancy Cancels. | 56-63 |
| 1851-1873 Issues and Special Delivery | 64-70 |
| Wells Fargo | 71-76 |

U.S. Stamps

| | |
|--|---------|
| 1847-1869 Issues | 77-91 |
| 1870-1877 Bank Note Co. Issues | 92-106 |
| 1890 Issue. | 107-108 |
| 1893 Columbian Issue. | 109-124 |
| 1894-1898 Bureau Issues | 125-136 |
| 1898 Trans-Mississippi Issue | 137-150 |
| 1901 Pan-American Issue | 151-159 |
| 1902-1907 Regular and Commemorative Issues | 160-172 |
| 1908-1911 Washington-Franklin Issues. | 173-187 |
| 1913-1915 Panama-Pacific Issue | 188-197 |
| 1912-1917 Washington-Franklin Issues. | 198-231 |
| 1918-1921 Issues (Sc. 523-550) | 232-246 |
| 1923-1956 Issues (Sc. 565-1053). | 247-270 |
| Airmail | 271-292 |
| Special Delivery | 293-298 |
| Postage Due. | 299-306 |
| Offices in China | 307-313 |
| Officials | 314-324 |
| Newspaper Stamps and Parcel Post | 325-334 |
| Revenue. | 335-336 |
| Duck Stamps | 337-343 |
| Confederacy | 344-350 |
| U.S. Possessions | 351-355 |

British Commonwealth

| | |
|--------------------------------|---------|
| Great Britain | 356-360 |
| Australia and Canada | 361-400 |

Europe and Colonies

| | |
|------------------------------------|---------|
| Bulgaria through Vatican | 401-427 |
|------------------------------------|---------|

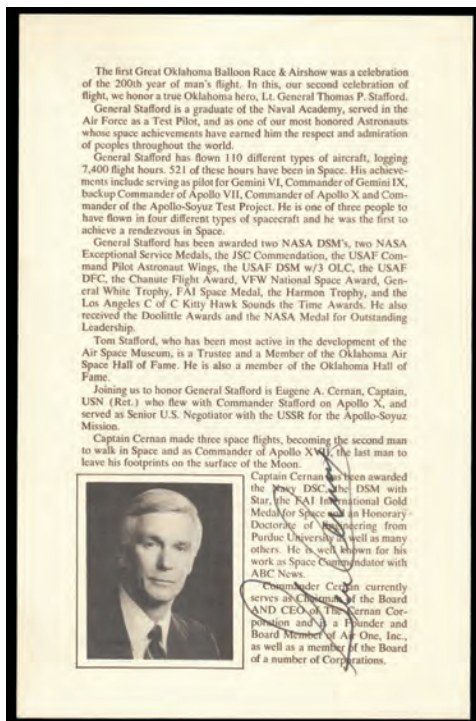
Asia, Latin America and Worldwide

| | |
|---|---------|
| Asia Collections through Worldwide. | 428-445 |
|---|---------|



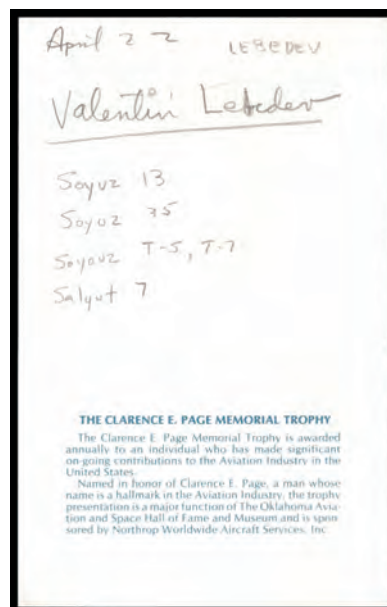
Autographs

Astronauts, Aviators, Military Leaders and Sportsmen



- 1 **Cernan, Capt. Eugene**, Commander of Apollo XVII, Capt. Cernan was the 2nd man to walk in space and the **first** man to leave his footprints on the moon; his signature on a 1984 program honoring fellow Oklahoma astronaut, Lt. Gen. Thomas P Stafford; extra copies of unautographed programs included; in 1999 he wrote a book entitled "The Last Man on the Moon: Astronaut Eugene Cernan and America's Race in Space"; a must have for the space related collector!

Estimate \$75 - 100



- 2 **Lebedev, Valentin**, Russian Cosmonaut, he made two flights into space and his stay aboard the Space Station Salyut 7 with Anatoly Berezovoy in 1982, which last 211 days, was recorded in the Guinness Book of Records, his signature and a list of four the spaceships and stations he was involved with on a 1989 Clarence E. Page Memorial Trophy Ceremonies Program; a true scientist dedicated to the exploration and knowledge of space.

Estimate \$25 - 35



- 3 **Pogue, Bill**, Mission Commander on Skylab 4, Oklahoma astronaut signature on 1974 FDC for the Skylab stamp.

Estimate \$50 - 75



- 4 **Pogue, Bill**, Mission Commander on Skylab 4, astronaut signature on program honoring him at the Oklahoma Air and Space Museum with a nice biography on the inside cover from 1989.
Estimate \$35 - 50



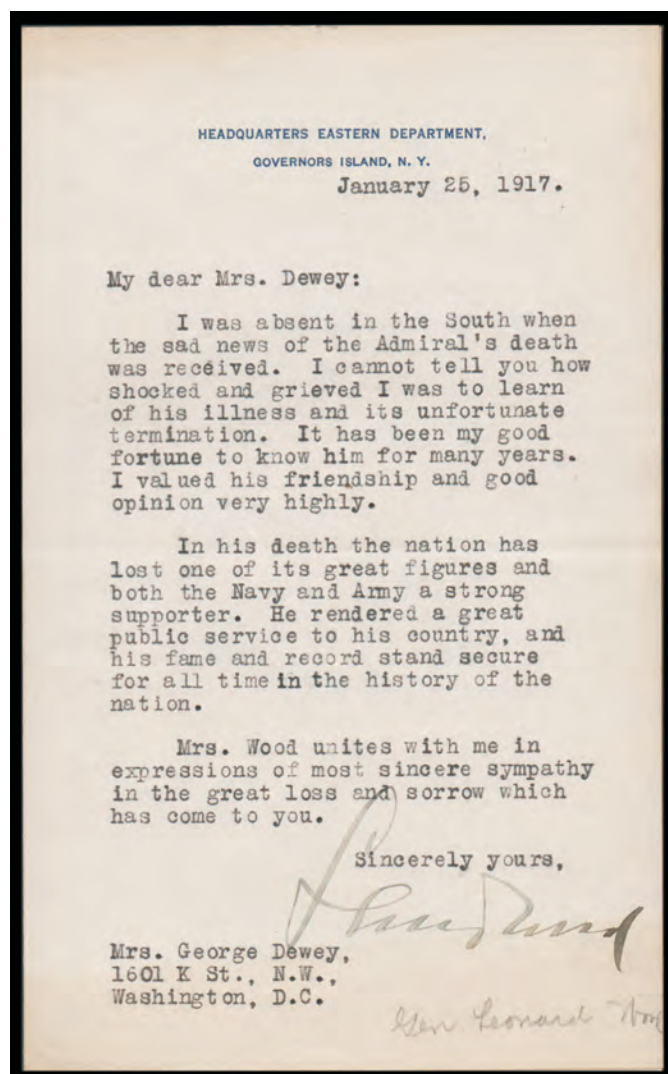
- 5 **Ingalls, Laura**, Pioneering American aviator (1893-1967); recipient of the Harmon Trophy; set and broke records for distance and for stunt flying; later imprisoned as a Nazi agent. Type-written Letter Signed "Laura Ingalls," 1 page, 4to, Burbank, CA, Sept 6, 1935. Just days before her transatlantic flight, she writes to apologize to postmaster Richard Singley of Lancaster, PA for misplacing some of his letters to be carried, and suggests a way to rectify it, and she instead carried an unmarked cover! Light blotting to signature, otherwise in excellent condition. Estimate \$50 - 75



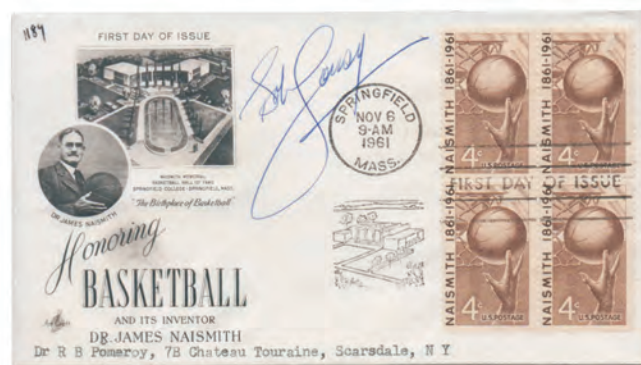
- 6 **King, Ernest Joseph** (23 November 1878 - 25 June 1956) was Commander in Chief, United States Fleet (COMINCH) and Chief of Naval Operations (CNO) during World War II. As COMINCH-CNO, he directed the United States Navy's operations, planning, and administration and was a member of the Joint Chiefs of Staff; lovely airmail cover sent Oct. 27, 1944 from the U.S. Fleet Post Office, Washington D.C. Estimate \$50 - 75



- 7 **Tibbets, Paul**, American Air Force officer (1915-2007); piloted the Enola Gay when she dropped the first atomic bomb on Hiroshima. Commemorative Cover Signed "Paul Tibbets," postmarked Richmond, VA, 6/29, year illegible, celebrating the Boeing B-29 Washington I. Affixed to a sheet with information about the plane, which was introduced to the RAF in 1950. With additional bio. Estimate \$75 - 100



- 8 **Wood, Leonard**, American soldier (1860-1927); Army Chief of Staff just before the First World War; although a medical officer, he rose to ranks of command, partly due to his service in the Philippines. Good content and association Type-written Letter Signed "Leonard Wood," as Commander of the Eastern Department, 1p, 8vo, Governor's Island, NY, September 25, 1917. Just days after the death of George Dewey, hero of Manila Bay, on January 17, Wood writes to his widow, "I cannot tell you how shocked and aggrieved I was to hear of his illness and its unfortunate termination....I valued his friendship and good opinion very highly...The nation has lost one of its great figures in both the Navy and Army..." Pencil notation at bottom, otherwise in excellent condition. With printed portrait. Estimate \$150 - 200

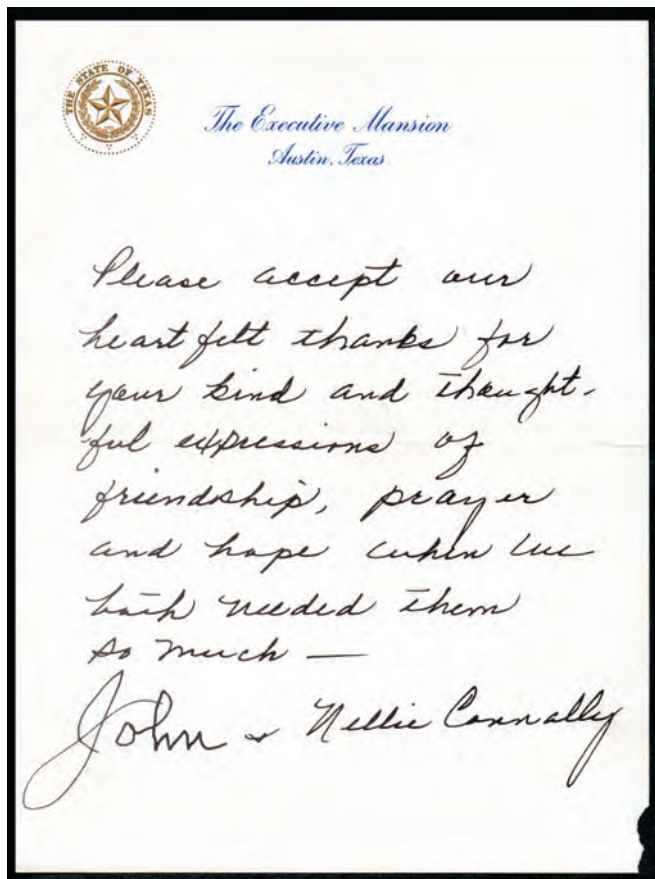


- 9 **Cousy, Robert Joseph, "Bob"**
Cousy is an American retired professional basketball player who played point guard with the Boston Celtics from 1950 to 1963; neat signed FDC honoring basketball and its inventor Dr. James Naismith, sent from Springfield, Mass Nov 6 1961. Estimate \$25 - 35



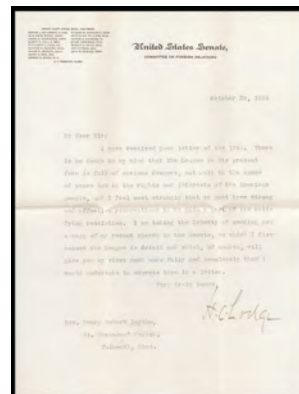
- 10 **Owens, Jesse**, Legendary American athlete (1913-80); won four gold medals at the 1936 Olympics in Berlin. Commemorative Cover Signed "Jesse Owens" vertically at right, uncanceled, for a field dedication in May 1963 that Owens attended. Dominican Republic stamp of the track star. Fine condition. Estimate \$100 - 150

U.S. Statesmen and Presidents' Wives



11 **Conally, Jr., John B.**, handwritten letter by Nellie Conally and signed by she and John B. Connally, Jr. (1917-1993), who was JFK's Secretary of the Navy (1961-1962), Governor of Texas (1963-1969) and Nixon's Secretary of the Treasury (1971-1972). He was wounded by Lee Harvey Oswald in the Kennedy assassination in Dallas, Texas on November 22, 1963. This note was postmarked on Dec 31, 1963 just a month later.

Estimate \$50 - 75



12 **Interesting Group of 20th Century U.S. Political Figures.** Six signed items and/or letters featuring:

Henry Cabot Lodge, Republican U.S. senator for more than 31 years (1893-1924) and chairman of the Committee on Foreign Relations; he led the successful congressional opposition to the country's participation in the League of Nations following World War I, great content Typewritten Letter Signed "H.C. Lodge" as Senator from MA and Chair of the Committee on Foreign Relations, on committee stationery, Washington, 10/20/1919, he tells a constituent that the newly formed League of Nations "in its present form is full of serious dangers, not only to the cause of peace, but to the rights and interests of the American people..." Folds, otherwise choice. With original envelope bearing printed frank postmarked Oct 24, 1919, Lodge's own efforts in the Senate ensured that the United States could not join the League, undermining its effectiveness and legitimacy.

Andrew William Mellon, sometimes A.W., was an American banker, businessman, industrialist, philanthropist, art collector, and politician from the wealthy Mellon family of Pittsburgh, Pennsylvania, he established a vast business empire before transitioning into politics where he served as United States Secretary of the Treasury from March 9, 1921, to February 12, 1932, presiding over the boom years of the 1920s and the Wall Street crash of 1929, official signature on business-sized card, un-dated, measures 1 3/4 x 3 1/4 inches, very fine with accompanying letter dated February 6, 1930 from his secretary regarding this card.

Nelson Aldrich Rockefeller (July 8, 1908 - January 26, 1979) was an American businessman and politician who served as the 41st vice president of the United States from 1974 to 1977, and previously as the 49th governor of New York from

1959 to 1973, signed typewritten letter dated June 16, 1965, fine.

Fiorello Henry La Guardia was an American politician. He is best known for being the 99th Mayor of New York City for three terms from 1934 to 1945 as a pro-New Deal liberal progressive Republican, previously he had been elected to Congress in 1916 and 1918, and again from 1922 through 1930, official signature on index-sized card, un-dated, measures 5 x 3 1/4 inches, very fine with accompanying FDC postmarked Apr 24, 1972.

James Michael Curley (November 20, 1874 - November 12, 1958) was an American Democratic Party politician from Boston, Massachusetts, he was one of the most colorful figures in Massachusetts politics in the first half of the 20th century, he served four terms as Democratic Mayor of Boston, Massachusetts, including part of one while in prison, typewritten signed letter dated September 28, 1921, fine.

Thomas Edmund Dewey (March 24, 1902 - March 16, 1971) was an American lawyer, prosecutor, and politician. He served as the 47th governor of New York from 1943 to 1954. In 1944, he was the Republican Party's nominee for president, typewritten signed letter dated December 20, 1937, fine. Estimate \$200 - 300



- 13 Cleveland, Frances**, First Lady of the United States (1864-1947); second wife of President Grover Cleveland, she was many years his junior; noted for her beauty and bright personality. Franked Cover Signed "Frances F Cleveland Preston," Princeton, NJ, 6/12/1931, addressed in type to Henry P Clayton of the same city. Cancellation touching signature, some light foxing, otherwise in choice condition. Estimate \$75 - 100



- 14 First Ladies of the United States**, Five covers featuring First Lady of the United States, **Edith K. Roosevelt** (1861-1948); wife of Theodore Roosevelt. Autograph Envelope Franked "Free / Edith K Roosevelt" and addressed in her hand to the E. A. Keach Co in Danielson, CT. Postmarked Oyster Bay, NY, 1936. Postal cancellation over signature; First Lady of the United States, **Grace Coolidge** (1879-1957); wife of Calvin Coolidge. Typed Envelope Franked "Grace Coolidge," Northampton, MA, 1955. Cancellation over signature. Some foxing; First Lady of the United States, **Lucretia Garfield** (1832-1918); wife of James A Garfield. Mourning Cover Franked "Lucretia R. Garfield," Washington, DC. Address in another hand. Date stamp touches signature. Mrs. Garfield's care for her husband as he slowly died from complications after being shot by a crazed office-seeker earned the nation's sympathy, and when she was widowed, she mourned for years; First Lady of the United States, **Frances Cleveland** (1864-1947); second wife of President Grover Cleveland, she was many years his junior; noted for her beauty and bright personality. Franked Cover Signed "Frances F Cleveland Preston," Princeton, NJ, 3/27/1934, addressed in another hand to Willard L Dutton of Brooklyn, NY. Cancellation across signature, otherwise in fine condition; acting First Lady of the United States, **Mary Lord Harrison** (1858-1948); second wife of President Benjamin Harrison; though she married Harrison after his time as President, she had moved into the White House to assist his first wife - her aunt - when she became ill. Autograph Cover Franked "Mary Lord Harrison" NYC, 10/18/1946, and addressed in her hand to Frances Beebe, secretary of Elmira College; also included is typewritten letter signed by Luci Johnson (daughter of Lyndon B. Johnson); a lovely group of FLOTUS memorabilia. Estimate \$350 - 500



U.S. Postal History

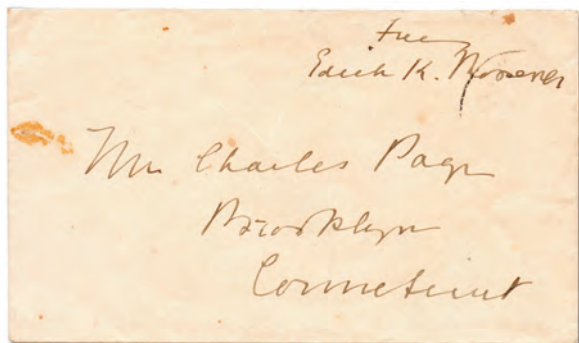
Railroad Covers



- 15** **Roosevelt, Edith K.**, First Lady of the United States (1861-1948); wife of Theodore Roosevelt. Autograph Envelope Franked "Free / Edith K Roosevelt" and addressed in her hand to the Bank of New York. Postmarked St Andrews, FL, 1936. Estimate \$150 - 200



- 16** **Roosevelt, Edith K.**, First Lady of the United States (1861-1948); wife of Theodore Roosevelt. Autograph Envelope Franked "Free / Edith K Roosevelt" and addressed in her hand to the Bank of New York. Postmarked Oyster Bay, NY, 1935. Postal cancellation over signature. Estimate \$100 - 150



- 17** **Roosevelt, Edith K.**, First Lady of the United States (1861-1948); wife of Theodore Roosevelt. Autograph Envelope Franked "Free / Edith K Roosevelt" and addressed in her hand to Charles Page of Brooklyn, CT. Postmark too light to read, touching signature. Foxing at left, else very good. Estimate \$75 - 100



- 18** **Boston & Albany R.R.**, gorgeous strike and neat circular grid cancel on stamp on a c. 1852 cover, Very Fine, *Rarity VI*. Towle 53-B-3. Estimate \$75 - 100




- 19** **Boston & Albany R.R.**, lovely Sep 8 c.d.s. and grid cancel ties #25 to buff envelope, Very Fine, *Rarity VI*. Towle 53-B-3. Estimate \$75 - 100



- 20** **Buffalo & Erie R.R.**, beautiful strike of blue c.d.s. ties stamp on a c. 1852 cover, Fine to Very Fine, *Rarity VII*. Towle 115-D-1. Estimate \$150 - 200




- 21  **Concord & Montreal R.R.**, lovely blue c.d.s. on a c. 1852 Massachusetts cover, Very Fine, *Rarity VII*. Towle 25-A-2. Estimate \$150 - 200




- 24  **Michigan Southern R.R.**, lovely Dec 16 strike on cover to Kellogsville, OH, Fine, *Rarity VIII*. Towle 559-C-4. Estimate \$200 - 300




- 22  **Louisville, Cincinnati & Lexington R.R.**, readable postmark (probably Towle 523-S-2) on an 1878 cover to Kentucky, Fine to Very Fine. Estimate \$50 - 75




- 25  **New Haven & New London R.R.**, readable cancel on a neat c. 1852 cover; tear in bottom right, Very Fine, *Rarity VIII*. Towle 70-C-1. Estimate \$250 - 350



- 23  **Michigan Central R.R.**, crisp strike on a stampless cover to Detroit, Very Fine, *Rarity VII*. Towle 610-A-1. Estimate \$150 - 200



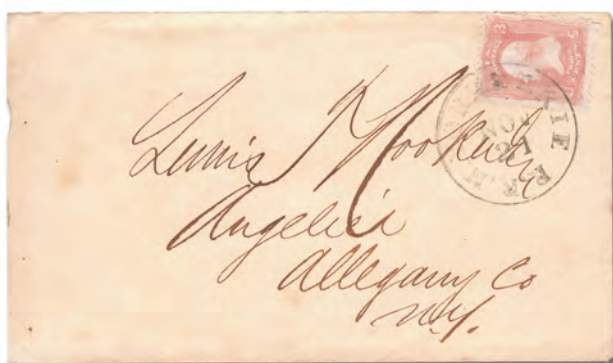
- 26  **New York**, straight line postmark on a stampless cover from Schenectady circa 1841, Very Fine, *Rarity VIII*. Towle 114-B-2. Estimate \$200 - 300



- 27 **New York & Boston Steamboat & R.R.**, neat c. 1857 cover, Fine to Very Fine, *Rarity VII*. Towle 73-C-2. Estimate \$150 - 200
pg 143.



- 30 **New York & New Haven R.R.**, neat centrally struck Oct 12 c.d.s. from Bridgeport, CT with deep blue Noble & Frye Attorneys advertiser on reverse, Very Fine, *Rarity VII*. Towle 70-D-3. Estimate \$150 - 200



- 28 **New York & Erie R.R.**, a neat strike on a circa 1861 cover, Very Fine, *Towle rarity VII*. Towle 125-C-1. Estimate \$200 - 300



- 31 **New York & New Haven R.R.**, scarce red c.d.s. and grid cancel, Very Fine, *Rarity VI*. Towle 70-D-1. Estimate \$75 - 100




- 29 **New York & Erie R.R.**, lovely strike tying stamp perfectly on a c. 1857 cover, Fine, *Rarity VIII*. Towle 125-E-1. Estimate \$200 - 300




- 32 **New York Railroad**, folded letter with manuscript 18 3/4 rate and solid red strike of straight line postmark, Fine to Very Fine, *Rarity VIII*. Towle 114-B-2. Estimate \$200 - 300




- 33  **Troy & Rutland R.R.**, lovely blue strike on a c. 1852 cover, Very Fine, *Rarity VIII*. Towle 40-A-1. Estimate \$200 - 300




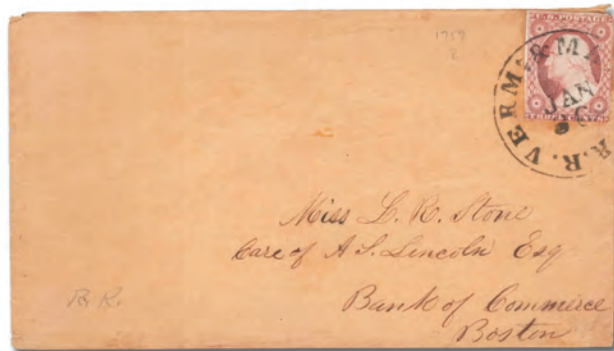
- 36  **Washington R.R.**, beautifully struck cancels in blue on a stampless cover, Very Fine, *Rarity VII*. 239-X-1. Estimate \$150 - 200




- 34  **Troy & Whitehall R.R.**, blue c.d.s. ties #11 to blue folded letter with an illegal reuse of stamp on piece of another envelope, Very Fine, *Rarity VI*. Towle 100-A-1. Estimate \$75 - 100




- 37  **Washington R.R.**, eye-catching "all in blue" folded letter, Very Fine, *Rarity VII*. Towle 239-N-1. Estimate \$150 - 200



- 35  **Vermont & Massachusetts R.R.**, gorgeous Jan 30 c.d.s., Fine to Very Fine, *Rarity VI*. Towle 51-A-1. Estimate \$75 - 100



- 38  **Washington R.R.**, circa 1849 cover doubly struck in blue with numeral 5, Fine to Very Fine, *Rarity VII*. Towle 239-N-1. Estimate \$150 - 200



- 39 **Worcester & Nashua R.R.**, readable postmark on a c. 1852 cr, Very Fine, *Rarity VII*. Towle 21-A-1. Estimate \$150 - 200



- 41 **Railway Post office, group of 11 covers and postcards**, featuring a wide variety of cancels ranging from 1886 to 1935; a lovely little group, Fine to Very Fine. Estimate \$200 - 300



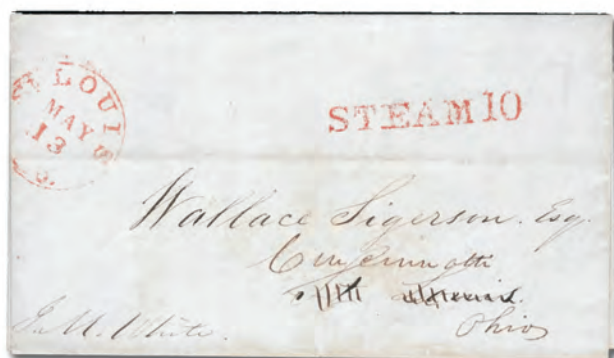
- 40 **Railroads, an interesting group of 15 covers and post cards**, featuring cancels from Washington & O, HJH & C (Hanover Junction) (2), Morris & Essex, Oswego & Syracuse (2), Eastern, Valley RR (Fort Defiance, VA), Concord and Montreal, Freehold & JA, Prov. & Wor., Phil & Erie, Baltimore (2) and Philada; a great addition to any RR enthusiasts collection all imaged on the website, Fine to Very Fine, *Rarity IV-V*. Estimate \$500 - 750



Ship Covers



- 42 ☒ **STEAM**, neat straight line postmark on a stampless folded letter from Stonington, Ct. to Providence, R.I., Fine to Very Fine. Estimate \$40 - 60



- 43 ☒ **STEAM 10**, neat straight line postmark on a stampless cover from St. Louis to Ohio, Fine to Very Fine. Estimate \$50 - 75



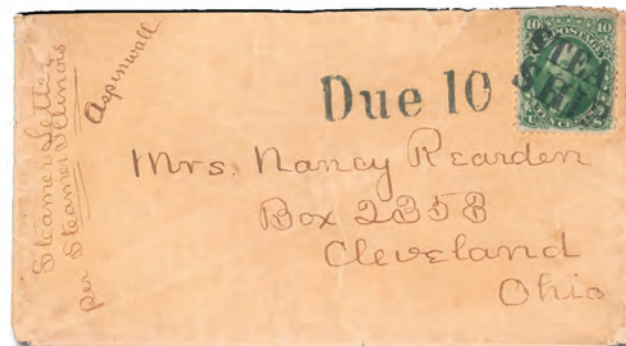
- 44 ☒ **STEAM 5**, clear cancel on a stampless cover to New Orleans, from the famous Carroll-Hoy correspondence. Estimate \$50 - 75



- 45 ☒ **STEAMBOAT**, neat straight line cancel on a stampless 1830 cover from New York to Philadelphia, Fine to Very Fine. Estimate \$50 - 75



- 46 ☒ **STEAMSHIP 10**, nice strike on an incoming stampless 1854 cover from Matanzas, Cuba to New York, via Charleston, Fine to Very Fine. Estimate \$50 - 75



- 47 ☒ **STEAMSHIP and DUE 10**, bold postmarks on a c. 1861 cover to Ohio, Fine to Very Fine. Estimate \$50 - 75

Advertising Covers



- 48 [Hotel] **Ebbitt House, Army & Navy, Washington, D.C.**, lovely illustration on a cover franked with 2¢ (279B) tied by a Collection & Distribution Wagon cancel; the “White Wagon” mail program was set in motion on October 1, 1896 and its purposed was to keep the mail moving in New York city and Washington D.C. as both cities were exploding with new development to accommodate the ever expanding influx of people to these cities; the wagons were designed to pick u and deliver mail as they moved the streets; however, due to several reasons the service ended in 1900 just fours years later; this is a lovely example of mail which was processed on a white wagon! tears on the left side not affecting the cancels, Fine to Very Fine. Estimate \$60 - 80



- 49 [Medical] **B.B. & J. Haggerty, Drug-gists Glassware**, superb green advertising cameo on a lovely 1862 cover, with New York duplex cancel tying a 3¢ rose (65), Very Fine, great eye appeal. Estimate \$100 - 150



- 50 [Printing & Publishing] **The Tuttle Company, Booksellers, Stationers, Printers, Publishers**, gorgeous all over advertising cover franked with 2¢ (279Bg) fitted neatly in its “stamp collar” and tied by a perfect machine cancel of the waving flag; frame lines bordering all 4 margins are visible on this; great eye appeal that just doesn’t get any better! Very Fine to Extremely Fine. Estimate \$60 - 80

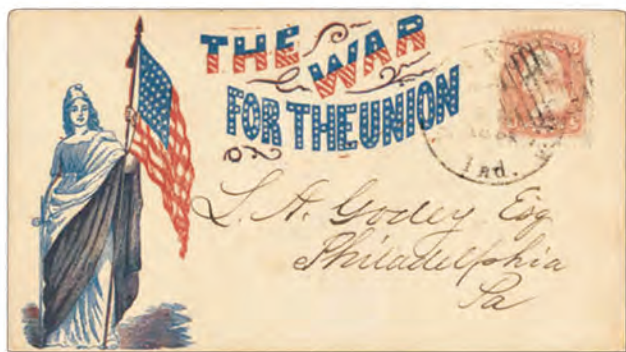


- 51 [Publication] **Scientific American**, lovely all over illustrated advertisement on cover from New York; interesting fact is the “Scientific American” is still publishing magazines today, Very Fine to Extremely Fine. Estimate \$150 - 200



- 52 Advertising covers, 1896-1914, neat small group, 6 in total featuring photography, expositions, tourism and jewelry, Fine to Very Fine.

Patriotic Covers



- 53 **Lady Liberty, Flag and “The War For The Union”**, on a lovely 1861 cover from Logansport, Ind. to Philadelphia, Very Fine. Scott 65. Walcott 2216. Weiss F-F-164.
Estimate \$75 - 100



- 54 **Eagle and Shield**, interesting design by Richards on a cover from Elizabethtown, NY to upstate NY, Fine. Scott 65. Walcott 2487. Weiss E-R-112.
Estimate \$75 - 100



- 55 **Flags and Constitution**, on an 1862 stampless cover marked “Paid 3”, from Derby Church, Pa. to Philadelphia, Fine to Very Fine.

Fancy Cancels



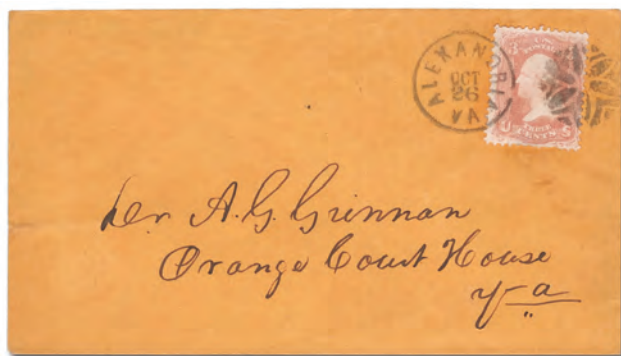
- 56 **[Fraternal] Masonic “Star of David” (New Haven, CT)**, perfect strike ties 3¢ rose (65) on an immaculate cover to Maine, Very Fine.
Estimate \$100 - 150




- 57 **[Geometric] Honeycomb (Birdsborough, PA)**, a superb fancy cancel strike ties a fresh looking 2¢ Banknote (210) to this intra-state cover which also has a neatly struck c.d.s.; a gorgeous cover that looks like it was mailed yesterday rather than nearly 150 years ago, Very Fine.
Estimate \$75 - 100

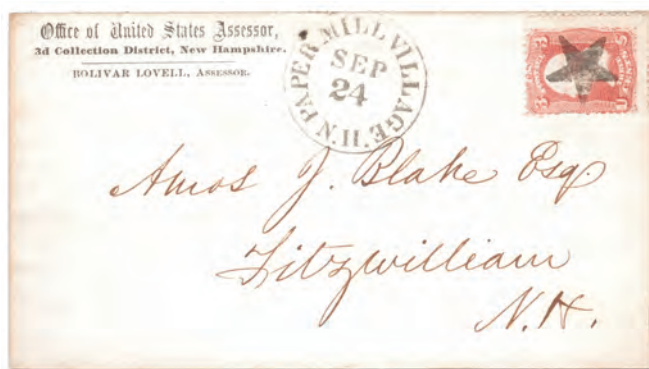



- 58 **[Geometric] “Prison Bars” (Columbus, OH)**, a lovely strike on cover to Iowa, Very Fine.
Estimate \$40 - 60




- 59  **[Geometric] Rosette (Alexandria, Va.)**, ties 3¢ rose (65) to cover along with matching town cancel, both postmarks are near complete and the fancy shows good detail as one would normally see in an early strike carved in cork, a little gem! Very Fine to Extremely Fine.

Estimate \$150 - 200




- 62  **Star (Paper Mill Village, N.H.)**, a socked-on-the-nose cancel ties 3¢ rose (65) on a lovely cover, with matching beautifully designed town cancel at left; tastefully done corner ad rounds off the nice composition of this lovely piece with contents, Very Fine. Scott \$60. Estimate \$50 - 75



- 60  **[Geometric] "Soccer Ball" (Waterford, Conn.) (Scott 207)**, nice socked-on-the-nose stylish fancy cancel ties a 3¢ Banknote (207) on a neat cover, Very Fine to Extremely Fine.


Estimate \$40 - 60



- 63  **Stars**, a lovely group of 9 different fancy star cancels, of note the Chicopee, MA ST-6P 23, perfect for the cancel specialist; a few faults, otherwise Fine to Very Fine.


Estimate \$100 - 150




- 61  **[Geometric] "Stove Pipe" (Leominster, Ma.)**, blue fancy cancel ties a 3¢ rose (65), with matching c.d.s. at left, both of which are very nice strikes; a lovely "C" monogram is on the back flap, Very Fine to Extremely Fine.

1851-1873 Issues and Special Delivery




- 64  **1851, 3¢ orange brown, type II (Scott 10A)**, a lovely example tied to an 1851 folded letter by a complete rounded black grid paired with a red New Orleans c.d.s.; the ink shows through the exterior page of the folded letter meaning that the exterior page was used to write the letter, Very Fine to Extremely Fine, a rare 3¢ circular rate for 1,000-1,500 miles. Scott \$1,000+. Estimate \$600 - 800




- 65  **1861-63, 1¢ blue + three 3¢ rose + 5¢ brown + three 10¢ green (Scott 63, 65, 68, 76)**, used on a triple rate cover to **France** (backstamped), a lovely 4-color franking, Fine to Very Fine. Estimate \$1,000 - 1,500



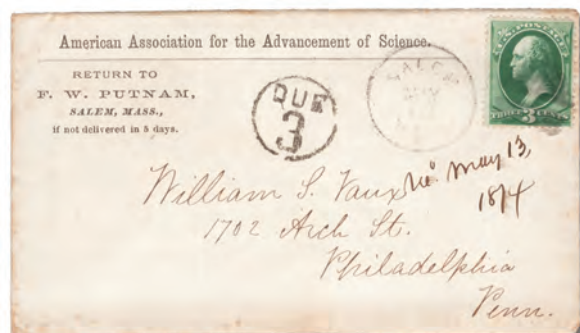
- 66  **1861, 3¢ rose (Scott 65)**, used in 1866 with a socked-on-the-nose PAID cancel plus two supplemental postal markings that tell a story; one is "ADVERTISED" in an oblong frame and the other is "UNCLAIMED" in bold, the advertised marking indicates no one came to the post office to pick this letter up so it was publicly advertised, usually in the local paper; after this the letter was still not claimed, so the post office marked it as such; cover is backstamped with "Dover, N.H.", Very Fine to Extremely Fine. Estimate \$100 - 150



- 67  **1863, 2¢ black (Scott 73)**, tied by a beautifully struck town cancel and a light struck black grid cancel allowing the design to show through; a lovely advertising cover from the Auburn Paper Bag Mfg. Co! Very Fine. Scott \$75. Estimate \$75 - 100



- 68 **1873, 3¢ green, C.B.N.C. printing (Scott 158)**, tied by a large "checker board" fancy cancel, unusually large in size, sent from Oberlin in 1875, Very Fine to Extremely Fine. Estimate \$40 - 60



- 69 **1873, 3¢ Washington, C.B.N.C. printing (Scott 158)**, on a nice 1874 cover from American Association for the Advancement of Science / F. W. Putnam / Salem, Mass to William S. Vaux / Philadelphia, PA with a nice "Due 3" in a circle; a great cover from one scientist to another, Putnam was one of the earliest anthropologists in the US and Vaux a notable mineralogist. Estimate \$40 - 60

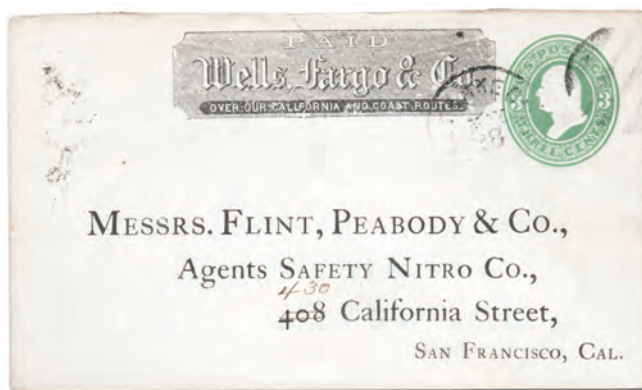


- 70 **Special Delivery, 1908, 10¢ green (Scott E7)**, used in Sept. 4, 1910 on a 2¢ entire, uprated with a 2¢ Washington, from Detroit to Boston, with an interesting "Fee Paid At ..." at left, Fine to Very Fine, E7's are seldom seen on cover. Estimate \$100 - 150

Wells Fargo



- 71 **Wells, Fargo & Co.**, frank on 3¢ postal envelope with blue Wells Fargo Express c.d.s.; backflap torn, Fine. Estimate \$50 - 75



- 72 **Wells, Fargo & Co.**, attractive frank on 3¢ green entire, with Salt Lake City c.d.s., to San Francisco, Fine to Very Fine. Estimate \$50 - 75



- 73 **Wells, Fargo & Co. / Carson City**, attractive frank on green 3¢ postal envelope to San Francisco, Fine to Very Fine. Estimate \$50 - 75



U.S. Stamps

1847-1869 Issues



- 77 ○ 1847, 5¢ red brown (Scott 1), 4 large even margins, neat light red grid cancel, Very Fine to Extremely Fine. Scott \$350.
Estimate \$200 - 300



- 74 ☒ Wells, Fargo & Co. / San Francisco, frank on 3¢ postal envelope to Downieville; back flap torn, Fine. Estimate \$40 - 60



- 75 ☒ Wells, Fargo & Co. / San Francisco, pretty frank on green 3¢ postal envelope to Oregon, Fine. Estimate \$50 - 75



- 76 ☒ Wells, Fargo & Co. / Santa Barbara, lovely frank on green 3¢ postal envelope (U84) to San Francisco, Fine to Very Fine. Estimate \$50 - 75



- 78 ○ 1861-67, 1¢ blue, assortment (Scott 63, 92), a lovely used array of 16 Scott #63 and 11 Scott #92 with a range of shades and die varieties; a few trivial faults, generally Fine to Very Fine, a nice specialist group. Scott \$5,395.
Estimate \$750 - 1,000



- 79 ○ **1861, 3¢ rose (Scott 65)**, very fine strikes, all with unusual blue target cancels; small faults, Fine to Very Fine appearance. Estimate \$50 - 75



- 80 ○ **1861, 30¢ orange (Scott 71)**, gorgeous NYFM geometric cancel, Fine; with 2019 Crowe certificate. Scott \$225. Kirke 66-07-01-SGEO. Estimate \$100 - 150



- 81 E **1861, 90¢ Washington essay, by Toppan, Carpenter & Co., in black (Scott 72-E5a)**, complete design, die on India, cut to shape, Very Fine. Scott \$350. Estimate \$250 - 350



- 82 E **1861, 90¢ Washington essay, by Toppan, Carpenter & Co., in blue (Scott 72-E5b)**, complete design, die on India, off card, 34x39mm, Very Fine, *rare*. Scott \$2,500. Estimate \$1,000 - 1,500



- 83 ★ **1863, 2¢ black (Scott 73)**, deep rich color, unused without gum, Fine. Scott \$140. Estimate \$40 - 60



- 84 ○ **1867, 2¢ black, Z. grill (Scott 85B)**, lightly canceled, Very Good to Fine. Scott \$1,100. Estimate \$200 - 300



- 85 ★ **1867, 3¢ red, F. grill (Scott 94)**, brilliant color, well centered side-to-side, o.g., hinged, almost Very Fine; with photocopy of 2017 P.S.E. certificate. Scott \$350. Estimate \$200 - 300



- 86 ○ **1869, 1¢ Franklin (Scott 112)**, a spectacular gem with huge jumbo margins, on bright white paper, beautifully struck rosette cancel, Very Fine to Extremely Fine. Scott \$130. Estimate \$150 - 200



- 87 ★ **1869, 2¢ Postrider (Scott 113)**, excellent color, o.g., hinged, Fine; with photocopy of 2015 P.F. certificate for block. Scott \$500.
Estimate \$150 - 200



- 88 E **1869, 3¢ Locomotive essay, small numerals, in dull violet (Scott 114-E6d)**, plate on stamp paper, perf'd, gummed and grilled, fresh, nicely centered, part o.g., Fine to Very Fine. Scott \$80. Brazer 114E-Ch. Estimate \$50 - 75



- 89 ★ **1869, 3¢ Locomotive (Scott 114)**, fresh and uncommonly well centered, o.g., very lightly hinged, Very Fine to Extremely Fine; with 2018 P.S.E. certificate. Scott \$225.
Estimate \$250 - 350



- 90 ○ **1869, 12¢ S.S. Adriatic (Scott 117)**, bright rich color, light unobtrusive cancel, Fine. Scott \$130.
Estimate \$50 - 75

A Very Fine 1869 90¢ Lincoln



- 91 ○ **1869, 90¢ Lincoln (Scott 122)**, an exceptionally attractive example featuring beautiful centering, a light cancel and amazingly bright color, Very Fine; with 2020 P.S.A.G. certificate graded VF 80. Scott \$1,800. SMQ \$2,000.
Estimate \$1,500 - 2,000

1870-1877 Bank Note Co. Issues



- 92 ★ **1870, 3¢ Washington essay, imperforate, in green with olive gray underprinting (Scott 147-E13)**, a lovely pair, well centered within large margins, without gum as issued, Very Fine. Estimate \$400 - 600



- 93 ★ **1871, 7¢ vermilion, N.B.N.C. printing (Scott 149)**, clear strike, NYFM cancel; tiny corner crease, Fine appearance; signed Richie?? Weiss ST-8P 11. Van Vliissingen-Waud A1.
Estimate \$100 - 150



- 94 ○ **1871, 7¢ vermillion, N.B.N.C. printing (Scott 149)**, lovely strike of NYFM cancel, Fine to Very Fine; with 2020 Crowe certificate. Weiss TR-C7. Van Vlissingen-Waud A20.
Estimate \$150 - 200



- 98 ○ **1871, 7¢ vermillion, N.B.N.C. printing (Scott 149)**, NYFM cancel and red transit cancel; small diagonal crease, Fine appearance. Scott \$90. Weiss TR-C7. Van Vlissingen-Waud S16.
Estimate \$60 - 80



- 95 ○ **1871, 7¢ vermillion, N.B.N.C. printing (Scott 149)**, well centered, NYFM cancel; small thin, Very Fine appearance. Weiss ST-8P 6. Van Vlissingen-Waud A13. Estimate \$100 - 150



- 99 ★★ **1873, 2¢ Jackson, C.B.N.C. printing (Scott 157)**, rich intense color on brilliant white paper, o.g., never hinged (rare thus!), Fine. Scott \$325 as hinged. Estimate \$120 - 150



- 96 ○ **1871, 7¢ vermillion, N.B.N.C. printing (Scott 149)**, lovely fancy shield NYFM cancel; two tiny tears at bottom, otherwise Fine to Very Fine, *quite scarce*; with 2020 Crowe certificate. Weiss RE-E 2. Van Vlissingen-Waud C10.
Estimate \$100 - 150



- 100 ○ **1873, 7¢ orange vermillion, C.B.N.C. printing (Scott 160)**, with secret mark, well-centered, NYFM cancel; two short perfs in upper right and light soiling, otherwise Extremely Fine; with 2020 Crowe certificate. Weiss ST-8P 5. Van Vlissingen-Waud A10. Estimate \$150 - 200



- 97 ○ **1871, 7¢ vermillion, N.B.N.C. printing (Scott 149)**, fancy crossroads NYFM cancel; small crease at top, otherwise Fine to Very Fine. Weiss TR-C 4. Van Vlissingen-Waud S20.
Estimate \$100 - 150



- 101 ○ **1873, 7¢ orange vermillion, C.B.N.C. printing (Scott 160)**, with secret mark, NYFM cancel, Fine to Very Fine; with 2020 Crowe certificate. Weiss GE-EN 8. Van Vlissingen-Waud G5.
Estimate \$150 - 200



- 102 ○ 1873, 7¢ orange vermillion, C.B.N.C. printing (Scott 160), gorgeous rosette style NYFM cancel, Fine to Very Fine; with 2020 Crowe certificate. Weiss TR-W 5. Van Vlissingen-Waud S14. Estimate \$150 - 200



- 103 ○ 1873, 7¢ orange vermillion, C.B.N.C. printing (Scott 160), with secret mark, very fine strike of NYFM cancel; reperforated at left, otherwise Fine; with 2020 Crowe certificate. Weiss GE-EP 2. Van Vlissingen-Waud G14. Estimate \$150 - 200



- 104 ○ 1873, 7¢ orange vermillion, C.B.N.C. printing (Scott 160), with secret mark, socked on the nose black NYFM cancel, Very Fine; with 2020 Crowe certificate. Scott \$85. Weiss GE-EN 3. Van Vlissingen-Waud G6. Estimate \$150 - 200



- 105 ○ 1873, 7¢ orange vermillion, C.B.N.C. printing (Scott 160), incredible strike, NYFM cancel; small faults, Fine to Very Fine appearance. Weiss GE-C7. Van Vlissingen-Waud W2. Estimate \$60 - 80



- 106 E 1877, 6¢ & 7¢ Washington P.B.N.C. essay (Scott 186-E1b), frames only, die on proof paper, printed through a mat, plus 190E1c, Very Fine. Brazer 115aE-Fd. Estimate \$300 - 400

1890 Issue



- 107 ○ 1890, 2¢ Washington, carmine, cap on both "2's" variety (Scott 220c), well centered, neat light target cancel, Very Fine. Scott \$35. Estimate \$40 - 60



- 108 ★★ 1893, 8¢ Sherman, lilac (Scott 225), bright and fresh, o.g., never hinged, almost Very Fine. Scott \$135. Estimate \$75 - 100



1893 Columbian Issue



- 109 ★★田 1893, 1¢ Columbian (Scott 230), plate block of 8, deep rich color on bright white paper, o.g., never hinged, Fine, a scarce plate block. Scott \$1,000. Estimate \$400 - 600



110



111

- 110 ★★ 1893, 2¢ Columbian, "broken hat" variety (Scott 231 var.), nicely centered, rich bright color, a premium example of this popular variety, o.g., never hinged, Very Fine; with 2006 P.F. certificate. Scott \$160. Estimate \$200 - 300

- 111 ★★ 1893, 2¢ Columbian (Scott 231), a lovely gem with outstandingly choice centering, o.g., never hinged, Very Fine to Extremely Fine. Scott \$31. Estimate \$30 - 40



- 112 ★★/★田 1893, 2¢ Columbian (Scott 231), plate block of 8, well centered for this plate block, and quite fresh, o.g., 7 stamps never hinged, top right stamp lightly hinged, Fine to Very Fine. Scott \$800. Estimate \$500 - 750



- 113 ★★/★田 1893, 3¢ Columbian (Scott 232), plate block of 8, fresh and nicely centered, o.g., lightly hinged at top, never hinged at bottom, Fine to Very Fine. Scott \$1,175. Estimate \$600 - 800



- 114 ★ 1893, 4¢ Columbian (Scott 233), o.g., lightly hinged, Fine to Very Fine. Scott \$50. Estimate \$30 - 40



- 115 ★★ 1893, 5¢ Columbian (Scott 234), excellent color, o.g., never hinged, Fine to Very Fine. Scott \$140. Estimate \$40 - 60



- 116 ★★ 1893, 6¢ Columbian (Scott 235), fresh, o.g., never hinged, Fine to Very Fine. Scott \$140. Estimate \$50 - 75



- 117 ★★田 1893, 6¢ Columbian (Scott 235), plate block of 8, excellent color, o.g., never hinged, Fine to Very Fine, *an attractive example of this very scarce plate block*. Scott \$3,100. Estimate \$1,200 - 1,800



- 118 ★ 1893, 8¢ Columbian (Scott 236), beautifully well centered, o.g., very lightly hinged, Extremely Fine. Scott \$48. Estimate \$60 - 80



- 119 ★★ 1893, 8¢ Columbian (Scott 236), bright fresh color, o.g., never hinged, Fine. Scott \$140. Estimate \$50 - 75



- 120 ★ 1893, 8¢ Columbian (Scott 236), lovely centering and fresh color, o.g., very lightly hinged, Very Fine. Scott \$48. Estimate \$40 - 60



- 121 ★★ 1893, 10¢ Columbian (Scott 237), deep rich color, o.g., never hinged, Fine. Scott \$250. Estimate \$100 - 150



- 122 ★ 1893, 10¢ Columbian (Scott 237), nicely centered, fresh, o.g., lightly hinged, Very Fine. Scott \$90. Estimate \$100 - 150



- 123 ★★ 1893, 15¢ Columbian (Scott 238), deep color and impression on bright paper, o.g., never hinged, Fine to Very Fine. Scott \$600. Estimate \$200 - 300

A Very Fine \$5 Columbian



- 124 ★ 1893, \$5 Columbian (Scott 245), fresh and well centered for this issue, o.g., hinged, Very Fine, a handsome example of this ever-popular high value; with 2020 P.S.A.G. certificate. Scott \$2,300. Estimate \$2,500 - 3,500



1894-1898 Bureau Issues



- 125 ★★ 1894, 2¢ Washington, pink, type I, unwatermarked (Scott 248), fresh, o.g., never hinged, Fine to Very Fine; with photocopy of 2019 P.F. certificate for block. Scott \$98. Estimate \$40 - 60



- 126 ★ 1894, 2¢ Washington, carmine, type I, unwatermarked (Scott 250), part imprint single, beautifully well centered, o.g., very lightly hinged, Extremely Fine. Scott \$29. Estimate \$30 - 40



- 127 ★★ 1894, 4¢ Lincoln, unwatermarked, *dramatic foldover error* (Scott 254 var.), o.g., never hinged; the pre-printing crease that caused the foldover is clearly visible, Fine to Very Fine for this. Scott \$600 as normal. Estimate \$150 - 200



- 128 ○ 1894, \$1 Perry, type II, unwatermarked (Scott 261A), well centered, almost Very Fine. Scott \$800. Estimate \$250 - 350



- 129 ★★ 1895, 2¢ Washington, type I, D.L. watermark (Scott 265), a beautiful plate number single, exceptionally well centered and brilliantly fresh, o.g., never hinged, Very Fine, a few perfs connecting the plate number are a bit weak and starting to separate - handle with care! with photocopy of 2020 P.S.A.G. certificate for strip. Scott \$105. Estimate \$75 - 100



- 130 ★田 1895, 2¢ Washington, carmine, type I, D.L. watermark (Scott 265), plate block of 6, nicely centered, fresh and bright, slightly disturbed o.g. (or never hinged but with large gum skips at left), Fine to Very Fine. Scott \$450. Estimate \$200 - 300



- 131 ○ 1895, 3¢ Jackson, purple, D.L. watermark (Scott 268), a used gem with gorgeous centering and a light Chicago cancel, Extremely Fine. Estimate \$40 - 60



- 132 ★ 1895, 6¢ Garfield, dull brown, D.L. watermark (Scott 271), excellent color, o.g., lightly hinged, Fine to Very Fine. Scott \$110.
Estimate \$50 - 75



- 133 ★ 1895, 15¢ Clay, dark blue, D.L. watermark (Scott 274), beautifully well centered with bright fresh color, o.g., lightly hinged, Very Fine. Scott \$200.
Estimate \$100 - 150



- 134 ★ 1898, 2¢ Washington, type IV, red (Scott 279B), a magnificent plate number single, the centering is most impressive, o.g., lightly hinged, Extremely Fine to Superb. Scott \$9.
Estimate \$40 - 60



- 135 ★★ 1898, 5¢ Grant, dark blue (Scott 281), a spectacular corner margin single, with centering that is most impressive, o.g., never hinged, Extremely Fine and choice, a gem! with 2019 P.F. certificate for strip. Scott \$100.
Estimate \$150 - 200



- 136 ★★ 1898, 5¢ Grant, dark blue (Scott 281), a superior example, well centered and with excellent color, o.g., never hinged, Very Fine; with photocopy of 2020 P.F. certificate for block. Scott \$100.
Estimate \$60 - 80

1898 Trans-Mississippi Issue



- 137 ★★ 1898, 1¢ Trans-Miss. (Scott 285), a beautiful corner margin single, perfectly centered and outstandingly choice, o.g., never hinged, Extremely Fine to Superb. Scott \$75.
Estimate \$120 - 150



- 138 ★★ 1898, 1¢ Trans-Miss. (Scott 285), near perfect centering, o.g., never hinged, Extremely Fine. Scott \$75.
Estimate \$100 - 150



- 139 ★★ 1898, 1¢ Trans-Miss. (Scott 285),** fresh and well centered, o.g., never hinged, Fine to Very Fine. Scott \$75. Estimate \$30 - 40



- 143 ★ 1898, 4¢ Trans-Miss. (Scott 287),** nicely centered, o.g., barest trace of hinge, almost Very Fine; with 2020 P.S.A.G. certificate conservatively graded F-VF 75. Scott \$110. Estimate \$100 - 150



- 140 ★ 1898, 2¢ Trans-Miss. (Scott 286),** plate number single, magnificent centering, a real "looker", slightly disturbed (sweated) o.g. (looks n.h.), Extremely Fine. Scott \$25. Estimate \$50 - 75



- 144 ★★田 1898, 4¢ Trans-Miss. (Scott 287),** top plate block of 6, excellent color, attractive centering for this issue, o.g., never hinged (with typical gum streaks at right), Fine to Very Fine. Scott \$3,250. Estimate \$1,500 - 2,000



- 141 ★ 1898, 2¢ Trans-Miss. (Scott 286),** top imprint single, really gorgeous centering, slightly disturbed o.g., hinge remnant in selvage, Extremely Fine. Scott \$25. Estimate \$40 - 60



- 145 ★ 1898, 5¢ Trans-Miss. (Scott 288),** very fresh, o.g., lightly hinged, Fine to Very Fine. Scott \$100. Estimate \$40 - 60



- 142 ★★ 1898, 4¢ Trans-Miss. (Scott 287),** vibrant color and impression, o.g., never hinged, Fine. Scott \$330. Estimate \$100 - 150



- 146 ★ 1898, 8¢ Trans-Miss. (Scott 289),** gorgeous centering that is close to perfection, a beauty! o.g., lightly hinged, Extremely Fine and choice. Scott \$140. Estimate \$120 - 150



- 147 ★田** 1898, 8¢ Trans-Miss. (Scott 289), plate block of 4, spectacularly well centered, with fresh bright color on ivory white paper, o.g., 1 stamp slightly disturbed (cataloged as a hinged plate block), Extremely Fine. Scott \$1,950.
Estimate \$1,000 - 1,500



- 148 ★** 1898, 10¢ Trans-Miss. (Scott 290), fresh and well centered, o.g., lightly hinged, Very Fine; with 2015 P.F. certificate. Scott \$140.
Estimate \$100 - 150



- 149 ★** 1898, 50¢ Trans-Miss. (Scott 291), lovely fresh color and attractive centering, o.g., previously hinged, almost Very Fine. Scott \$600.
Estimate \$250 - 350

Rare 50¢ Trans-Miss. Plate Block



- 150 ★田** 1898, 50¢ Trans-Miss. (Scott 291), plate block of 4, fresh bright color, a very collectible example of this extremely rare plate block, slightly disturbed o.g., lightly hinged, Fine. Scott \$17,500.
Estimate \$4,000 - 6,000

1901 Pan-American Issue



- 151 ★★田** 1901, 1¢ Pan-American (Scott 294), top margin block of 4, nicely centered, fresh, o.g., never hinged, almost Very Fine. Scott \$160.
Estimate \$75 - 100



- 152 ★ 1901, 2¢ Pan-American (Scott 295), well centered, slightly disturbed (sweated) o.g. (looks n.h. but isn't quite), its no sweat calling this Extremely Fine. Scott \$15. Estimate \$60 - 80



- 153 ★★ 1901, 2¢ Pan-American (Scott 295), plate number single, beautifully well centered and with bright fresh color, o.g., never hinged, Extremely Fine. Scott \$38. Estimate \$50 - 75



- 154 ★★ 1901, 2¢ Pan-American (Scott 295), a fresh and well centered beauty, o.g., never hinged, Extremely Fine; with photocopy of 2020 P.F. certificate for strip. Scott \$38. Estimate \$40 - 60



- 155 ★★ 1901, 4¢ Pan-American (Scott 296), fresh, o.g., never hinged, Fine to Very Fine. Scott \$170. Estimate \$60 - 80



- 156 ★★ 1901, 4¢ Pan-American (Scott 296), fresh, o.g., never hinged, Fine. Scott \$170. Estimate \$50 - 75



- 157 ★★/★ 1901, 4¢ Pan-American (Scott 296), plate number and imprint strip of 3, visually quite impressive with near perfect centering, o.g., 2nd stamp never hinged / others hinged, Extremely Fine and choice; with 2020 P.F. certificate. Scott \$300. Estimate \$200 - 300



- 158 ★ 1901, 8¢ Pan-American (Scott 298), fresh and nicely centered, o.g., small hinge remnant, almost Very Fine. Scott \$90. Estimate \$50 - 75



- 159 ★ 1901, 10¢ Pan-American (Scott 299), nicely centered, fresh, almost Very Fine. Scott \$115. Estimate \$50 - 75

1902-1907 Regular and Commemorative Issues



- 160** ★★ **1903, 1¢ Franklin (Scott 300)**, vertical pair, near perfect centering and excellent color, o.g., never hinged, Very Fine to Extremely Fine; with photocopy of 2020 P.F. certificate for block. Scott \$60. Estimate \$30 - 40



- 161** ○ **1903, 1¢ Franklin (Scott 300)**, an "Oh My God Could it Really Be This Good" gem, Superb, face it - gems like this don't grow on trees (at least not in our garden, we grow apples and avocados). Estimate \$50 - 75



- 162** ★ **1903, 4¢ Grant (Scott 303)**, gorgeous centering, o.g., barest trace of hinge, Extremely Fine; with 2015 P.F. certificate. Scott \$55. Estimate \$75 - 100



- 163** ★★ **1902, 8¢ Martha Washington (Scott 306)**, beautifully fresh and nicely centered, o.g., never hinged, almost Very Fine. Scott \$110. Estimate \$50 - 75



- 164** ○ **1902, 8¢ Martha Washington (Scott 306)**, the finest used Martha you are ever likely to see, Superb, George would have been so proud of her. Estimate \$40 - 60



- 165** ★★/★ **1903, 2¢ Washington & Shield, type I, carmine (Scott 319g)**, position E, booklet pane of 6, o.g., 5 stamps never hinged, position 1 barely hinged, Fine; with 2020 P.F. certificate. Scott \$125. Estimate \$40 - 60



- 166 ★★ 1904, 3¢ Louisiana Purchase (Scott 325), well centered, very bright and fresh, o.g., never hinged, Very Fine. Scott \$170.
Estimate \$80 - 120



- 167 ★★ 1904, 3¢ Louisiana Purchase (Scott 325), good color, attractive, o.g., never hinged, Fine to Very Fine. Scott \$170.
Estimate \$60 - 80



- 168 ★ 1904, 10¢ Louisiana Purchase (Scott 327), beautiful centering and bright fresh color, o.g., hinged, Very Fine to Extremely Fine. Scott \$125.
Estimate \$80 - 120



- 169 ★ 1904, 10¢ Louisiana Purchase (Scott 327), outstandingly well centered, o.g., hinged, Choice Very Fine. Scott \$125.
Estimate \$75 - 100



- 170 ★★/★田 1904, 10¢ Louisiana Purchase (Scott 327), plate block of 6, lovely bright fresh color, o.g., stamps never hinged, hinged in selva only, Fine, an attractive example of this very scarce plate block. Scott \$2,250.
Estimate \$1,000 - 1,500



- 171 ★ 1907, 5¢ Jamestown (Scott 330), lovely centering and fresh color, o.g., hinged, Very Fine. Scott \$140.
Estimate \$60 - 80



- 172 ★★ 1907, 5¢ Jamestown (Scott 330), plate number and imprint strip of 3, lovely color, nicely centered for this very difficult issue, immaculate Post Office fresh o.g., never hinged, Fine. Scott \$1,300.
Estimate \$300 - 400

1908-1911 Washington-Franklin Issues



- 173 ★ 1908, 3¢ Washington, D.L. watermark (Scott 333), a lovely gem featuring near perfect centering within oversized margins, o.g., lightly hinged, Extremely Fine to Superb. Scott \$30.
Estimate \$40 - 60



- 174 ★ 1909, 13¢ Washington, D.L. watermark (Scott 339), especially well centered and with brilliant color, o.g., lightly hinged, Extremely Fine. Scott \$38.
Estimate \$50 - 75



- 175 ★★ 1909, 15¢ Washington, D.L. watermark (Scott 340), a beautiful, well centered, wide margined gem, o.g., never hinged, Very Fine and choice; with photocopy of 2020 P.F. certificate for block. Scott \$160.
Estimate \$100 - 150



- 176 ★ 1909, 15¢ Washington, D.L. watermark (Scott 340), nicely centered, fresh, o.g., hinge remnant, almost Very Fine; with photocopy of 2020 P.F. certificate for block. Scott \$68.
Estimate \$30 - 40



- 177 ★★ 1909, 4¢ Washington, D.L. watermark, imperf (Scott 346), horizontal pair with part imprint, a beautiful premium example, perfect in every respect, o.g., never hinged, Extremely Fine to Superb. Scott \$55.
Estimate \$75 - 100



- 178 ★ 1909, 2¢ Washington, bluish paper (Scott 358), exceptionally well centered, o.g., lightly hinged, Very Fine to Extremely Fine. Scott \$80.
Estimate \$75 - 100



- 179 ★ 1909, 2¢ Lincoln Centenary, imperf (Scott 368), horizontal pair, gorgeous centering amid oversized margins, slightly disturbed o.g., Extremely Fine to Superb; with 2020 P.F. certificate. Scott \$28.
Estimate \$30 - 40



- 180 ★★ 1909, 2¢ Alaska-Yukon, imperf (Scott 371), horizontal pair, immaculate and choice, o.g., never hinged, Extremely Fine. Scott \$65.
Estimate \$60 - 80



- 181 ★★ 1909, 2¢ Hudson-Fulton, imperf (Scott 373), horizontal pair, choice centering and margins, o.g., never hinged, Extremely Fine. Scott \$88. Estimate \$60 - 80



- 182 ★ 1911, 8¢ Washington, S.L. watermark (Scott 380), part imprint single, well centered and with brilliant color, o.g., lightly hinged, Very Fine to Extremely Fine. Scott \$90. Estimate \$100 - 150



- 183 ○ 1910, 1¢ Franklin, S.L. watermark, vertical coil pair (Scott 390), excellent color, lightly canceled, almost Very Fine; with 2015 P.F. certificate for strip of 3. Scott \$45. Estimate \$40 - 60



- 184 ★ 1912, 4¢ Washington, S.L. watermark, horizontal coil (Scott 395), perfectly centered, a beauty! o.g., very lightly hinged, Extremely Fine; with 2013 P.S.A.G. certificate. Scott \$60. Estimate \$75 - 100



- 185 ★★ 1913, 5¢ Washington, S.L. watermark, horizontal coil (Scott 396), pair, lovely color, o.g., never hinged, Fine to Very Fine. Scott \$375. Estimate \$200 - 300



- 186 ○ 1913, 5¢ Washington, S.L. watermark, horizontal coil (Scott 396), pair, uncommonly well centered, a lovely pair, lightly canceled, Very Fine to Extremely Fine. Scott \$190. Estimate \$150 - 200



- 187 ○ 1913, 5¢ Washington, S.L. watermark, horizontal coil (Scott 396), pair, fresh color, light town cancel, Fine. Scott \$190. Estimate \$60 - 80

1913-1915 Panama-Pacific Issue



- 188 ★★/★田 1913, 1¢ Panama-Pacific, perf 12 (Scott 397)**, plate block of 6, an awesomely well centered multiple with deep color, o.g., lightly hinged (4 stamps never hinged), Extremely Fine. Scott \$300. Estimate \$200 - 300



- 189 ★★田 1913, 1¢ Panama-Pacific, perf 12 (Scott 397)**, plate block of 6, deep rich color and impression, o.g., never hinged (minor gum skip affecting only one stamp), Fine to Very Fine. Scott \$450. Estimate \$75 - 100



- 190 ★★ 1913, 2¢ Panama-Pacific, perf 12 (Scott 398)**, a gem in every respect, the centering is most impressive, pristine o.g., never hinged, Extremely Fine and choice; with 2011 P.S.E. certificate. Scott \$35. Estimate \$75 - 100



- 191 ★★ 1913, 2¢ Panama-Pacific, perf 12 (Scott 398)**, a lovely gem with outstandingly choice centering, o.g., never hinged, Very Fine to Extremely Fine. Scott \$35. Estimate \$30 - 40



- 192 ★★ 1913, 5¢ Panama-Pacific, perf 12 (Scott 399)**, fresh and well centered, o.g., never hinged, Very Fine; with photocopy of 2020 P.S.A.G. certificate for block. Scott \$160. Estimate \$100 - 150



- 193 ★ 1913, 5¢ Panama-Pacific, perf 12 (Scott 399)**, lovely centering, o.g., very lightly hinged, Very Fine. Scott \$70. Estimate \$50 - 75



- 194 ★ 1913, 5¢ Panama-Pacific, perf 12 (Scott 399)**, nicely centered and very fresh, o.g., very lightly hinged, almost Very Fine; with photocopy of 2020 P.S.A.G. certificate for block. Scott \$70. Estimate \$40 - 60



- 195 ★ 1913, 5c Panama-Pacific, perf 12 (Scott 399), bright fresh color, o.g., small hinge remnant, Fine to Very Fine. Scott \$70. Estimate \$30 - 40



- 196 ○ 1913, 5c Panama-Pacific, perf 12 (Scott 399), well centered within stunningly large margins, a gem which the Chicago post office has ever so neatly canceled, Superb. Estimate \$40 - 60



- 197 ★ 1915, 5c Panama-Pacific, perf 10 (Scott 403), nicely centered within oversized margins and with bright fresh color, o.g., lightly hinged, Very Fine; with photocopy of 2019 P.F. certificate for block. Scott \$160. Estimate \$120 - 150

1912-1917 Washington-Franklin Issues



- 198 ★★/★ 1912, 2c Washington, S.L. watermark, vertical coil (Scott 411), a gorgeous line pair, perfectly centered, with deep rich color, o.g., lightly hinged at top, never hinged at bottom, Extremely Fine; with 1982 A.P.S. certificate. Scott \$55. Estimate \$75 - 100



- 199 ★★ 1912, 8c Franklin, S.L. watermark, perf 12 (Scott 414), fresh and well centered, o.g., never hinged, Very Fine. Scott \$100. Estimate \$60 - 80



- 200 ★★ 1912, 15c Franklin, S.L. watermark, perf 12 (Scott 418), plate number single, fresh, o.g., never hinged, Fine to Very Fine. Scott \$175. Estimate \$100 - 150



- 201 ★★/★田 1912, 15¢ Franklin, S.L. watermark, perf 12 (Scott 418), plate block of 6, well centered, a lovely plate block, o.g., top center stamp lightly hinged, other 5 stamps never hinged; minor gum crease at top left, Very Fine. Scott \$953 as singles. Estimate \$400 - 600



- 202 ★★ 1914, 20¢ Franklin, S.L. watermark, perf 12 (Scott 419), fresh and nicely centered, o.g., never hinged, almost Very Fine; with photocopy of 2020 P.F. certificate for block. Scott \$400. Estimate \$200 - 300



- 203 ★★田 1914, 1¢ Washington, S.L. watermark, perf 10 (Scott 424), plate block of 10 with "COIL STAMPS" imprint, beautifully well centered throughout, o.g., never hinged, Very Fine to Extremely Fine. Scott \$350. Estimate \$250 - 350



- 204 ★★ 1914, 9¢ Franklin, S.L. watermark, perf 10 (Scott 432), great centering and color, o.g., never hinged, Very Fine to Extremely Fine; with 2020 P.F. certificate for block. Scott \$95. Estimate \$100 - 150



- 205 ★★/★田 1914, 9¢ Franklin, S.L. watermark, perf 10 (Scott 432), plate block of 6, lovely fresh color, o.g., 4 stamps with hinge remnants, top left and bottom right stamps never hinged, Fine to Very Fine. Scott \$725. Estimate \$350 - 500



- 206 ★ 1914, 10¢ Franklin, S.L. watermark, perf 10 (Scott 433), plate number single, lovely centering and bright fresh color, o.g., barely hinged, Very Fine. Scott \$40. Estimate \$30 - 40



- 207 ★★ 1914, 15¢ Franklin, S.L. watermark, perf 10 (Scott 437), nicely centered within large margins, a lovely stamp, o.g., never hinged, Very Fine; with photocopy of 2020 P.S.A.G. certificate for block, which mentions a tiny trivial "perf disc impression in bottom margin". Scott \$275. Estimate \$120 - 150



- 208 ★★ 1914, 3¢ Washington, S.L. watermark, horizontal flat plate coil (Scott 445), good color, o.g., never hinged; with "a natural perforation dimple inclusion" (visible only on the reverse), Fine to Very Fine; with 1986 P.F. certificate. Scott \$500. Estimate \$200 - 300



- 209 ★ 1914, 4¢ Washington, S.L. watermark, horizontal flat plate coil (Scott 446), a coil for the seeker of perfect centering - this one has it! o.g., lightly hinged, Superb; with 2020 P.S.A.G. certificate graded SUP 98. SMQ \$725. Estimate \$600 - 802



- 210 ★★ 1916, 2¢ Washington, type III, S.L. watermark, vertical rotary press coil (Scott 450), nicely centered, o.g., never hinged, Very Fine. Scott \$28. Estimate \$30 - 40



- 211 ★★ 1916, 2¢ Washington, type III, S.L. watermark, vertical rotary press coil (Scott 450), line pair, deep rich color, o.g., never hinged, Fine to Very Fine, an attractive example of this scarce line pair. Scott \$550. Estimate \$200 - 300



- 212 ★ 1916, 5¢ Washington, S.L. watermark, horizontal rotary press coil (Scott 458), wonderfully well centered and very fresh, o.g., very lightly hinged, Extremely Fine. Scott \$28.
Estimate \$40 - 60



- 213 ★★/★田 1916, 1¢ Washington, unwatermarked, perf 10 (Scott 462), plate block of 6, the magnificent centering makes calling it merely "perfect" seem wimpy, o.g., 5 stamps never hinged; pencil notes in selvage on the reverse, Extremely Fine and then some. Scott \$160.
Estimate \$150 - 200



- 214 ★田 1916, 2¢ Washington, unwatermarked, perf 10 (Scott 463), plate block of 6, intense color and deep impression, o.g., n.h. except top middle stamp small hinge spot, Very Fine. Scott \$150.
Estimate \$50 - 75



- 215 ★ 1916, 10¢ Franklin, unwatermarked, perf 10 (Scott 472), lovely centering and bright fresh color, o.g., very lightly hinged, Very Fine. Scott \$115.
Estimate \$100 - 150



- 216 ★★ 1917, \$5 Marshall, perf 10 (Scott 480), excellent color, o.g., never hinged, Fine. Scott \$375.
Estimate \$120 - 150



- 217 ★ 1917, \$5 Marshall, perf 10 (Scott 480), an attractive fresh example, o.g., lightly hinged, Fine to Very Fine; with photocopy of 2020 P.S.A.G. certificate for block. Scott \$170.
Estimate \$100 - 150



- 218 ★★ 1916, 2¢ Washington, type I, unwatermarked, imperf (Scott 482), a magnificent gem surrounded by parts of 8 other stamps, o.g., never hinged, Superb. Estimate \$40 - 60



- 219 ★★ 1917, 3¢ Washington, type I, unwatermarked, imperf (Scott 483), a wonderfully choice gem surrounded by parts of 8 other stamps, o.g., never hinged, Superb. Scott \$24.
Estimate \$75 - 100



- 220 ★★ 1917, 3¢ Washington, type I, unwatermarked, imperf (Scott 483), a magnificent plate number pair, beautifully well centered within large margins, flawless o.g., never hinged, Superb.
Estimate \$40 - 60



- 221 ★★ 1916, 3¢ Washington, type II, unwatermarked, imperf (Scott 484), a wonderfully choice jumbo perfectly centered and with parts of 8 other stamps, o.g., never hinged, Superb; with 2016 P.S.E. certificate. Estimate \$75 - 100



- 222 ★★ 1918, 1¢ Washington, unwatermarked, vertical rotary press coil (Scott 486),** a magnificent line pair, perfectly centered and with excellent color, o.g., never hinged, Extremely Fine to Superb. Scott \$10.

Estimate \$30 - 40



- 223 ★★ 1917, 3¢ Washington, unwatermarked, vertical rotary press coil pair (Scott 489),** almost perfectly centered and very fresh, o.g., never hinged, Extremely Fine; with 2015 P.F. certificate. Scott \$23. Estimate \$50 - 75



- 224 ★★ 1917, 3¢ Washington, type I, unwatermarked, horizontal rotary press coil pair (Scott 493),** o.g., never hinged, Extremely Fine; with 2007 P.S.E. certificate graded XF 90. SMQ \$125. Estimate \$120 - 150



- 225 ★ 1917, 2¢ Washington, type I, lake color, unwatermarked, perf 11 (Scott 499h),** excellent color, o.g., very lightly hinged; faint vertical crease, otherwise Fine to Very Fine, a very collectible example of this scarce color variety; with photocopy of 2020 P.S.A.G. certificate for block. Scott \$500. Estimate \$150 - 200



- 226 ★★ 1917, 2¢ Washington, type Ia, unwatermarked, perf 11 (Scott 500),** plate number single, lovely fresh color, o.g., never hinged; small natural paper inclusion, Fine overall; with photocopy of 2018 P.F. certificate for block. Scott \$570. Estimate \$75 - 100



- 227 ★★ 1917, 2¢ Washington, type Ia, unwatermarked, perf 11 (Scott 500),** fresh color, o.g., never hinged; small (barely visible) natural paper irregularity in the left margin, Fine; with photocopy of 2018 P.F. certificate for block. Scott \$550. Estimate \$75 - 100



- 228 ★★/★田 1917, 2¢ Washington, type Ia, unwatermarked, perf 11 (Scott 500), plate block of 6, nicely centered and very fresh, o.g., lightly hinged at top (4 stamps never hinged), almost Very Fine. Scott \$2,100. Estimate \$750 - 1,000



- 230 ★田 1917, 3¢ Washington, type II, unwatermarked, perf 11 (Scott 502), plate block of 6, a fresh and nicely centered plate block, o.g., lightly hinged, Fine to Very Fine, the bottom right stamp is nearly Superb. Scott \$160. Estimate \$150 - 200



- 229 ★★ 1917, 3¢ Washington, type I, unwatermarked, perf 11 (Scott 501), perfect in every respect, the centering is strikingly choice, o.g., never hinged, Extremely Fine to Superb. Scott \$20. Estimate \$50 - 75



- 231 ★★ 1917, 9¢ Franklin, unwatermarked, perf 11 (Scott 509), fresh bright color and exceptional centering, o.g., never hinged, Very Fine. Scott \$25. Estimate \$40 - 60

1918-1921 Issues



- 232 ★ 1918, \$2 Franklin, orange red & black (Scott 523), lovely centering and bright fresh color, o.g., lightly hinged, Very Fine. Scott \$525.
Estimate \$350 - 500



- 233 ★★ 1918, 3¢ Washington, type III, off-set printing (Scott 529), a beautifully well centered jumbo, o.g., never hinged, Extremely Fine and choice.
Estimate \$40 - 60



- 234 ★★ 1918, 2¢ Washington, type IV, off-set printing, imperf (Scott 532), plate number single, pretty close to flawless perfection, o.g., never hinged, Extremely Fine and choice. Scott \$70.
Estimate \$75 - 100



- 235 ★★ 1918, 2¢ Washington, type IV, off-set printing, imperf (Scott 532), a gem example, well centered within oversized margins, o.g., never hinged, Very Fine to Extremely Fine. Scott \$70.
Estimate \$60 - 80



- 236 ★★ 1918, 2¢ Washington, type V, off-set printing, imperf (Scott 533), perfectly centered within ample margins, o.g., never hinged; a small natural gum crease, otherwise Extremely Fine; with photocopy of 2019 P.F. certificate for block. Scott \$175.
Estimate \$120 - 150



- 237 ★★ 1919, 3¢ Victory (Scott 537), perfectly centered within spectacularly large margins, o.g., never hinged, a Superb jumbo. Scott \$20.
Estimate \$75 - 100



- 238 ★★ 1919, 3¢ Victory (Scott 537), plate block of 6, lovely fresh color and attractive centering, o.g., never hinged, Fine to Very Fine. Scott \$350.
Estimate \$150 - 200



- 239 ★田 1919, 1¢ and 2¢ Washington, rotary press coil waste, perf 11 x 10, imperf horizontally (Scott 538a, 540a), blocks of 4, o.g., very lightly hinged, Fine to Very Fine. Scott \$260.
Estimate \$100 - 150



- 240 ★★/★ 1919, 1¢ Washington, rotary press coil waste, perf 11 x 10, imperf horizontally (Scott 538a), vertical pair, fresh and beautifully well centered, o.g., lightly hinged at top, never hinged at bottom, Very Fine. Scott \$60. Estimate \$30 - 40



- 241 ★★ 1919, 2¢ Washington, type III, rotary press coil waste, perf 11 x 10 (Scott 540), a wonderfully choice gem, almost perfectly centered and with deep rich color, pristine o.g., never hinged, Extremely Fine and choice. Scott \$28. Estimate \$50 - 75



- 242 ○ 1919, 3¢ Washington, rotary press coil waste, perf 11 x 10 (Scott 541), perfectly centered and very lightly canceled; a tiny trivial natural paper inclusion, still Extremely Fine; with 1993 A.P.S. certificate. Scott \$33. Estimate \$75 - 100



- 243 ○ 1923, 1¢ Washington, rotary press sheet waste, perf 11 (Scott 544), excellent color, lightly canceled, Fine, an attractive example of this rare issue, which is almost always found off-center, ex-Mark Morrow, who had (and who still has) excellent taste in rarities; with 1987 P.F. certificate. Scott \$3,500. Estimate \$2,000 - 3,000



- 244 ★★ 1921, 2¢ Washington, rotary press coil waste, perf 11 (Scott 546), excellent color, o.g., never hinged, Fine; with photocopy of 2004 P.F. certificate for block. Scott \$230. Estimate \$50 - 75



- 245 ★★ 1920, 2¢ Pilgrim (Scott 549), near perfect centering and great color, o.g., never hinged, Extremely Fine and choice; with 2011 P.S.E. certificate. Estimate \$60 - 80



- 246 ★★ 1920, 5¢ Pilgrim (Scott 550), premium centering, o.g., never hinged, Very Fine to Extremely Fine; with 2010 P.S.E. certificate graded VF-XF 85. Scott \$65. SMQ \$110.

Estimate \$75 - 100

1923-1956 Issues



- 247 ★★/★田 1923, 14¢ American Indian (Scott 565), a gem block of 4, with mathematically perfect centering throughout, o.g., lightly hinged at top, never hinged at bottom, Superb. Scott \$28.

Estimate \$40 - 60



- 248 ★★田 1923, 14¢ American Indian (Scott 565), plate block of 6, immaculate, pristine o.g., never hinged, nearly Very Fine. Scott \$120.

Estimate \$40 - 60



- 249 ★★ 1925, 3¢ Lincoln, rotary press printing, perf 10 (Scott 584), a beautiful corner margin single, with essentially perfect centering, o.g., never hinged, Extremely Fine to Superb. Scott \$60.

Estimate \$75 - 100



- 250 ★★ 1925, 3¢ Lincoln, rotary press printing, perf 10 (Scott 584), beautifully well centered, o.g., never hinged, Extremely Fine. Scott \$60.

Estimate \$40 - 60



- 251 ★★ 1926, 7¢ McKinley, rotary press, perf 10 (Scott 588), a beautiful gem, extraordinarily choice, o.g., never hinged, Very Fine to Extremely Fine. Scott \$26.

Estimate \$30 - 40



- 252 ★★/★田 1926, 8¢ Grant, rotary press, perf 10 (Scott 589), plate block of 4, well centered, o.g., lightly hinged at top, never hinged at bottom, Very Fine. Scott \$300.

Estimate \$200 - 300



- 253 ★** 1925, 10¢ Monroe, rotary press, perf 10 (Scott 591), great centering and fresh color, o.g., barely hinged, Extremely Fine; with 2020 P.S.E. certificate graded XF 90. SMQ \$85.
Estimate \$60 - 80



- 254 ★★/★** 1929, 2¢ Washington, type II, horizontal rotary press coil (Scott 599A), pair, excellent color, o.g., left stamp never hinged; the left stamp with a tiny internal cut (barely visible) and the right stamp with a thin spot, otherwise Fine to Very Fine; with 2020 P.F. certificate. Scott \$210.
Estimate \$75 - 100



- 255 ★★田** 1925, 1¢ Lexington-Concord (Scott 617), plate block of 6, perfect in every respect and uncommonly choice, o.g., never hinged, Extremely Fine to Superb. Scott \$68. Estimate \$75 - 100



- 256 ★★** 1925, 2¢ Lexington-Concord (Scott 618), perfect in every respect, the centering and margins are simply fantastic, o.g., never hinged, Superb. Estimate \$40 - 60



- 257 ★★** 1925, 2¢ Lexington-Concord (Scott 618), a select example featuring outstandingly choice centering, o.g., never hinged, Extremely Fine and choice. Estimate \$20 - 30



- 258 ★★** 1925, 5¢ Lexington-Concord (Scott 619), almost perfectly centered within large margins, o.g., never hinged, Extremely Fine; with 2005 P.F. certificate for block. Scott \$26. Estimate \$50 - 75



- 259 ★★** 1925, 17¢ Wilson (Scott 623), well centered within oversized margins, o.g., never hinged, Very Fine to Extremely Fine; with 2011 P.S.E. certificate. Scott \$19. Estimate \$30 - 40



- 260 ★★ 1926, 2¢ Sesquicentennial Exposition (Scott 627), a beautiful gem, perfect in every respect and extraordinarily choice, o.g., never hinged, Superb. Estimate \$30 - 40



- 261 ★★ 1926, 5¢ Ericsson (Scott 628), a beautiful gem, perfect in every respect and extraordinarily choice, o.g., never hinged, Superb. Estimate \$40 - 60



- 262 ★★ 1926, 2¢ White Plains (Scott 629), extraordinarily choice centering and margins, o.g., never hinged, Extremely Fine to Superb; with 2006 P.S.E. certificate graded XF-SUP 95. SMQ \$55. Estimate \$50 - 75



- 263 ★★田 1927, 4¢ Martha Washington, rotary press printing (Scott 636), a premium quality plate block of 4, perfectly centered throughout, o.g., never hinged, Extremely Fine. Scott \$93. Estimate \$100 - 150



- 264 ★★ 1929, 2¢ Edison, rotary press coil (Scott 656), joint line strip of 4 (a line pair at left and a regular pair at right), flawless and perfectly centered, o.g., never hinged, Extremely Fine; with 2013 P.S.A.G. certificate. Scott \$155. Estimate \$80 - 120



- 265 ★★ 1929, 8¢ Kans. (Scott 666), an exceptionally choice example of the key value of the set, o.g., never hinged, Extremely Fine to Superb. Scott \$145. Estimate \$120 - 150



- 266 ★★ 1929, 10¢ Kans. (Scott 668)**, fresh and well centered, o.g., never hinged, Very Fine to Extremely Fine; with 2002 P.S.E. certificate for block. Scott \$45. Estimate \$40 - 60



267

- 267 ★★ 1929, 7¢ Nebr. (Scott 676)**, lovely centering, o.g., never hinged, Very Fine; with 2002 P.S.E. certificate for block. Scott \$45. Estimate \$40 - 60



268

- 268 ★★ 1929, 10¢ Nebr. (Scott 679)**, deep rich color, key to the complete Nebraska overprint set, o.g., never hinged, Fine to Very Fine. Scott \$180. Estimate \$75 - 100



- 269 ★★ 1933, 3¢ Byrd Antarctic (Scott 733)**, an exceptionally choice example, o.g., never hinged, Extremely Fine to Superb. Estimate \$20 - 30



- 270 ★★ 1956, \$5 Hamilton (Scott 1053)**, beautifully centering that is close to perfect, o.g., never hinged (minor gum skip), Extremely Fine to Superb. Scott \$58. Estimate \$30 - 40

Airmail



- 271 ★ Airmail, 1918, 6¢ Jenny (Scott C1)**, perfectly centered, a lovely stamp, o.g., lightly hinged, Extremely Fine. Scott \$55. Estimate \$40 - 60



- 272 ★★ Airmail, 1918, 16¢ Jenny (Scott C2)**, beautifully well centered, o.g., never hinged, Extremely Fine and choice. Scott \$120. Estimate \$120 - 150



- 273 ★ Airmail, 1918, 16¢ Jenny (Scott C2)**, a perfectly centered gem, outstandingly choice, o.g., very lightly hinged, Superb. Scott \$60. Estimate \$75 - 100



- 274 ★★ Airmail, 1918, 16¢ Jenny (Scott C2)**, fresh color, nicely centered, o.g., never hinged, almost Very Fine. Scott \$120. Estimate \$60 - 80



- 275 ★★ **Airmail, 1918, 24¢ Jenny (Scott C3)**, a perfectly centered gem, o.g., never hinged (faint gum bend), Extremely Fine to Superb. Scott \$130. Estimate \$100 - 150



- 280 ★ **Airmail, 1923, 24¢ Biplane (Scott C6)**, fresh and well centered, o.g., very lightly hinged; tiny trivial natural paper inclusion, Very Fine. Scott \$65. Estimate \$40 - 60



- 276 ★★ **Airmail, 1923, 8¢ dark green (Scott C4)**, choice centering, o.g., never hinged, Very Fine to Extremely Fine. Scott \$35. Estimate \$30 - 40



- 277 ★ **Airmail, 1923, 16¢ dark blue (Scott C5)**, almost perfectly centered, o.g., lightly hinged, Extremely Fine. Scott \$60. Estimate \$40 - 60



- 281 ★★田 **Airmail, 1923, 24¢ Biplane (Scott C6)**, an immaculate plate block of 6, uncommonly choice, o.g., never hinged, Very Fine. Scott \$2,500. Estimate \$1,500 - 2,000



- 278 ★ **Airmail, 1923, 16¢ dark blue (Scott C5)**, beautifully well centered, a gem! o.g., lightly hinged, Extremely Fine to Superb. Scott \$60. Estimate \$40 - 60



- 282 ★★ **Airmail, 1927, 20¢ Map & Planes (Scott C9)**, a perfectly centered beauty, outstandingly choice, flawless o.g., never hinged, Superb. Estimate \$40 - 60



- 279 ★ **Airmail, 1923, 24¢ Biplane (Scott C6)**, a perfectly centered beauty, o.g., very lightly hinged, Extremely Fine. Scott \$65. Estimate \$60 - 80



- 283 ★★田 Airmail, 1927, 20¢ Map & Planes (Scott C9), a beautiful corner margin block of 4 with siderographer's initials, perfectly centered throughout, pristine o.g., never hinged, Superb. Scott \$50. Estimate \$60 - 80



- 284 ★★ Airmail, 1930, 5¢ Winged Globe, flat plate printing (Scott C12), a perfectly centered beauty, o.g., never hinged, Extremely Fine to Superb. Scott \$18. Estimate \$30 - 40



- 285 ★★ Airmail, 1933, 50¢ "Chicago" Zeppelin (Scott C18), almost perfectly centered, o.g., never hinged, Extremely Fine. Scott \$75. Estimate \$60 - 80



- 286 ★★ Airmail, 1933, 50¢ "Chicago" Zeppelin (Scott C18), well centered, flawless o.g., never hinged, Very Fine. Scott \$75. Estimate \$50 - 75



- 287 ★★ Airmail, 1933, 50¢ "Chicago" Zeppelin (Scott C18), nicely centered, o.g., never hinged, almost Very Fine. Scott \$75. Estimate \$40 - 60



- 288 ★★ Airmail, 1933, 50¢ "Chicago" Zeppelin (Scott C18), nicely centered, o.g., never hinged (faint gum skip), almost Very Fine. Scott \$75. Estimate \$40 - 60



- 289 ★ Airmail, 1933, 50¢ "Chicago" Zeppelin (Scott C18), nicely centered, o.g., very lightly hinged, Very Fine. Scott \$45. Estimate \$30 - 40



- 290 ★★田 Airmail, 1933, 50¢ "Chicago" Zeppelin (Scott C18), plate block of 6, perfectly centered throughout, a gem plate block, o.g., never hinged, Extremely Fine. Scott \$600. Estimate \$350 - 500



Special Delivery



- 291 ★★田 **Airmail, 1934, 6¢ Winged Globe (Scott C19)**, plate block of 4, flawless and uncommonly choice, o.g., never hinged, Extremely Fine. Scott \$20. Estimate \$30 - 40



- 292 ★★田 **Airmail, 1939, 30¢ Transatlantic (Scott C24)**, a beautiful plate block of 6, with near perfect centering, o.g., never hinged (top right stamp with minor gum disturbance), Extremely Fine. Scott \$110. Estimate \$60 - 80



- 293 S **Special Delivery, 1902, 10¢ ultramarine, overprinted "Specimen" (Scott E6SE)**, lovely fresh color, unused without gum, Fine to Very Fine overall even with the pulled perf. Scott \$175. Estimate \$60 - 80



- 294 ★★ **Special Delivery, 1908, 10¢ green (Scott E7)**, top imprint single, perfectly centered, o.g., never hinged; a bit toned in the top margin only, Extremely Fine overall. Scott \$140. Estimate \$75 - 100



- 295 ★ **Special Delivery, 1908, 10¢ green (Scott E7)**, deep color and impression amid jumbo margins, o.g., lightly hinged, Very Fine to Extremely Fine. Scott \$65. Estimate \$60 - 80



- 296 ★ **Special Delivery, 1908, 10¢ green (Scott E7)**, horizontal pair, near perfect centering, o.g., lightly hinged, Extremely Fine. Scott \$130. Estimate \$100 - 150



- 297 ★★ **Special Delivery, 1917, 10¢ ultra-marine (Scott E11)**, the epitome of perfection, a magnificent gem, o.g., never hinged, Extremely Fine to Superb. Scott \$45. Estimate \$60 - 80



- 298 ★ **Special Delivery, 1922, 10¢ gray violet (Scott E12)**, magnificent centering, o.g., very lightly hinged, Extremely Fine to Superb; with 2020 P.S.E. certificate graded XF-SUP 95. SMQ \$100. Estimate \$75 - 100



- 301 ★★ **Postage Due, 1914, 1¢ carmine lake (Scott J52)**, a fresh attractive example, o.g., never hinged, Fine to Very Fine. Scott \$220. Estimate \$60 - 80



- 302 ★★ **Postage Due, 1914, 10¢ carmine lake (Scott J56)**, lovely fresh bright color, an attractive example, o.g., never hinged, Fine to Very Fine. Scott \$200. Estimate \$75 - 100

Postage Due



- 299 ★ **Postage Due, 1884, 30¢ red brown (Scott J20)**, o.g., hinged; natural paper inclusion at top left and reperfed at right, otherwise Fine to Very Fine; with 2014 P.S.E. certificate. Scott \$225. Estimate \$40 - 60



- 300 ★ **Postage Due, 1895, 5¢ claret, unwatermarked (Scott J34)**, just about perfectly centered, and very fresh, o.g., hinged; a small corner crease, otherwise Extremely Fine; with 2005 P.F. certificate. Scott \$300. Estimate \$150 - 200



- 303 ★★田 **Postage Due, 1917, 5¢ carmine (Scott J64)**, block of 4 with plate number, excellent color, o.g., never hinged, Fine to Very Fine. Scott \$140. Estimate \$50 - 75



- 304 ★★/★ **Postage Due, 1917, 50¢ carmine rose (Scott J67)**, plate number and imprint strip of 3, nicely centered, o.g., 2 stamps never hinged (gum bends); weak perfs in the selvage with some hinge reinforcement, Very Fine overall. Scott \$790 as singles. Estimate \$300 - 400



- 305 ★ **Postage Due, 1930, 5¢ carmine (Scott J73)**, plate number single, an attractive well centered example in premium condition, o.g., bar-est trace of hinge, Very Fine to Extremely Fine. Scott \$18. Estimate \$40 - 60



- 306 ★★ **Postage Due, 1959 (1¢) carmine rose & black, denomination omitted (Scott J89a)**, beautifully well centered, flawless o.g., never hinged, Very Fine. Scott \$200. Estimate \$120 - 150

Offices in China



- 307 ★田 **Offices in China, 1919, 4¢ on 2¢ rose (Scott K2)**, top plate block of 6, a fresh and attractive example of this elusive plate block, o.g., middle two lightly hinged, others never hinged, Very Fine. Scott \$300. Estimate \$120 - 150



- 308 ★ **Offices in China, 1919, 8¢ on 4¢ brown (Scott K4)**, lovely centering and excellent color, o.g., lightly hinged, Extremely Fine. Scott \$55. Estimate \$50 - 75



- 309 ★★田 Offices in China, 1919, 12¢ on 6¢ red orange (Scott K6), plate block of 6, a handsome and very fresh plate block, uncommonly choice, o.g., never hinged (couple tiny gum skips), Very Fine for the issue. Scott \$1,500. Estimate \$600 - 800



- 310 ★★ Offices in China, 1919, 16¢ on 8¢ olive green (Scott K8a), fresh, nicely centered, o.g., never hinged, Fine to Very Fine; with 1993 P.F. certificate for block. Scott \$150. Estimate \$75 - 100



- 311 ★★田 Offices in China, 1919, 18¢ on 9¢ salmon red (Scott K9), plate block of 6, fresh, o.g., never hinged, Fine to Very Fine. Scott \$1,200. Estimate \$600 - 800



- 312 ★ Offices in China, 1919, \$1 on 50¢ light violet (Scott K15), lovely fresh color, o.g., hinged, Fine. Scott \$550. Estimate \$200 - 300



- 313 ★★ Offices in China, 1922, 2¢ on 1¢ green (Scott K17), attractive centering and fresh color, o.g., never hinged, almost Very Fine. Scott \$225. Estimate \$100 - 150



Officials



- 314 ★ Officials, 1875 Special Printing, three different 1¢ values, each overprinted "Specimen" (Scott O1SD//O35SD), without gum as issued, Fine to Very Fine. Scott \$98. Estimate \$30 - 40**



- 315 ★ Agriculture Dept., 1873, 2¢ yellow (Scott O2), brilliant color and impression, o.g., previously hinged, Fine. Scott \$275. Estimate \$75 - 100**



- 316 ★★ Interior Dept., 1873, 1¢ vermilion (Scott O15), nicely centered and with excellent color, o.g., never hinged, almost Very Fine; with photocopy of 2019 P.F. certificate for block. Scott \$170. Estimate \$75 - 100**



- 317 ★ Interior Dept., 1873, 10¢ vermilion (Scott O19), beautifully well centered, o.g., hinged, Very Fine; with 2020 P.S.A.G. certificate graded VF 80. Scott \$70. Estimate \$75 - 100**



- 318 (★) Navy Dept., 1873, 1¢ ultramarine (Scott O35), perfect centering and bright fresh color, regummed, Extremely Fine. Scott \$75. Estimate \$60 - 80**



- 319 S Agriculture Dept., 1875 Special Printing, 1¢ yellow, overprinted "Specimen" (Scott O1SD), without gum as issued, Fine to Very Fine. Scott \$33. Estimate \$20 - 30**



- 320 S Officials, 1875 Special Printing, five different 1¢ values, each overprinted "Specimen" (Scott O1SD//O57SD), without gum as issued, Fine to Very Fine. Scott \$163. Estimate \$50 - 75**



- 321 S Executive Dept., 1875 Special Printing, 1¢ carmine, overprinted "Specimen" (Scott O10SD), group of 5, without gum as issued, Fine to Very Fine. Scott \$163. Estimate \$40 - 60**



- 322 S State Dept., 1875 Special Printing, 1¢ and 2¢ bluish green, overprinted "Specimen" (Scott O57SD-O58SD), without gum as issued, Fine to Very Fine. Scott \$65.**

Estimate \$30 - 40



- 323 S War Dept., 1875 Special Printing, 2¢ deep rose, overprinted "Specimen" (Scott O84SD), beautifully well centered, without gum as issued; nibbed perf, otherwise Very Fine. Scott \$125.**

Estimate \$60 - 80



- 324 S War Dept., 1875 Special Printing, 24¢ deep rose, overprinted "Specimen" (Scott O91SD), fresh color with overprint in blue, without gum as issued, Fine; with 2016 P.F. certificate. Scott \$1,400.**

Estimate \$750 - 1,000

Newspaper Stamps



- 325 (★) Newspaper, 1875, 6¢ black, C.B.N.C. printing (Scott PR12), wonderfully well centered, unused without gum, Extremely Fine. Scott \$120.**

Estimate \$75 - 100



- 326 ★★ Newspaper, 1879, \$12 yellow green (Scott PR75), fresh color and impression, o.g., never hinged; minute perf toning, otherwise Fine to Very Fine. Scott \$850.**

Estimate \$500 - 750

Parcel Post



- 327 ★★ Parcel Post, 1913, 2¢ carmine rose (Scott Q2)**, excellent centering and color, o.g., never hinged, Extremely Fine. Scott \$13.
Estimate \$30 - 40



- 328 ★★ Parcel Post, 1913, 3¢ carmine rose (Scott Q3)**, well centered, o.g., never hinged (couple tiny gum skips), Very Fine. Scott \$24.
Estimate \$20 - 30



- 329 ★ Parcel Post, 1913, 4¢ carmine rose (Scott Q4)**, near perfect centering, o.g., lightly hinged, Extremely Fine. Scott \$28.
Estimate \$30 - 40



- 330 ★ Parcel Post, 1913, 10¢ carmine rose (Scott Q6)**, beautifully well centered, o.g., lightly hinged, Extremely Fine. Scott \$40.
Estimate \$40 - 60



- 331 ★★ Parcel Post, 1913, 50¢ carmine rose (Scott Q10)**, lovely centering and freshness, a premium example, o.g., never hinged, Very Fine. Scott \$500.
Estimate \$250 - 350



- 332 ★★ Parcel Post, 1913, 75¢ carmine rose (Scott Q11)**, o.g., never hinged, Fine to Very Fine. Scott \$190.
Estimate \$60 - 80



- 333 ★ Parcel Post Postage Due, 1913, 5¢ dark green (Scott JQ3)**, a perfectly centered beauty, o.g., small hinge remnant, Extremely Fine. Scott \$9.
Estimate \$30 - 40



- 334 ○ Special Handling, 1955, 20¢ light green, dry printing (Scott QE3a)**, Fine to Very Fine. Scott \$150.
Estimate \$50 - 75

Revenue



- 335 ★★ Silver Tax, 1934, 1¢ to 10¢ values (Scott RG1-RG7)**, a neat group with the RG7 being particularly choice, o.g., never hinged, Fine to Very Fine. Scott \$24 for hinged. Estimate \$40 - 60



- 336 ★ Silver Tax, 1941, 1¢ to 80¢ values (Scott RG58-RG69)**, fresh and bright, several well centered, an attractive and sound run of the lower denominations from this difficult and undervalued set, perfect for the Silver Tax enthusiast, o.g., lightly hinged, Fine to Very Fine. Scott \$373. Estimate \$150 - 200

Duck Stamps



- 337 ★★ Hunting Permit, 1951, \$2 Gadwall Ducks (Scott RW18)**, o.g., never hinged, Fine to Very Fine. Scott \$90. Estimate \$40 - 60



- 338 ★★ Hunting Permit, 1957, \$2 American Eider (Scott RW24)**, o.g., never hinged, Extremely Fine. Scott \$85. Estimate \$50 - 75



- 339 ★★ Hunting Permit, 1958, \$2 Canada Geese (Scott RW25)**, o.g., never hinged, Very Fine. Scott \$85. Estimate \$50 - 75



- 340 ★★ Hunting Permit, 1963, \$3 Brants (Scott RW30)**, o.g., never hinged, Extremely Fine. Scott \$100. Estimate \$50 - 75



- 341 ★★ Hunting Permit, 1965, \$3 Canvas-back Drakes (Scott RW32)**, o.g., never hinged, Very Fine. Scott \$100. Estimate \$50 - 75



- 342 ★★ Hunting Permit, 1967, \$3 Old Squaw Ducks (Scott RW34), plate block of 4, fresh, o.g., never hinged, Fine to Very Fine. Scott \$550. Estimate \$300 - 400



- 343 ★★ Michigan State Duck & Trout Stamps, 1990-95, full agent sheets, group of nine full agent sheets (8 1/2" x 11", 3-ring punched, with spots for agent stamp/number, passbook stamp, etc. and either 10 or 15 die-cut stamps for that year; includes Waterfowl stamps 1990/1995 (Scott MI-15, 16, 17, 18 and 20) and Trout & Salmon stamps 1991-1993 (Wooten 24-26); face value \$514.75, post office fresh, o.g., never hinged, Very Fine, full agent sheets are actually quite scarce and

Confederacy



- 344 ○ Confederacy, U.S. Used in the Confederacy, 1857, 3¢ dull red, type III (Scott 26), Mobile Alabama March 7 1861 c.d.s., Fine. Scott \$10. Estimate \$40 - 60



- 345 ○ Confederacy, U.S. Used in the Confederacy, 1861, 3¢ US Star Die, confederate state usage of this cut square, New Orleans c.d.s Apr 22 '61, Fine. Estimate \$40 - 60



- 346 ○ Confederacy, Charleston, S.C., 1861, 5¢ blue (Scott 16X1), margins all around, lightly canceled; small thin, Very Fine appearance. Scott \$800. Estimate \$250 - 350



- 347 ★ Confederacy, 1862, 5¢ blue, Archer & Daly printing (Scott 7), an impressive corner margin single with huge margins, o.g., small hinge remnant; some light gum creases, otherwise Extremely Fine. Scott \$20. Estimate \$30 - 40



- 348 ★★ **Confederacy**, 1863, 10¢ blue (Scott 11), huge margins, o.g., never hinged, Extremely Fine to Superb. Estimate \$50 - 75



- 349 ★★田 **Confederacy**, 1863, 10¢ blue (Scott 11), block of 4, large margins, o.g., never hinged, Extremely Fine. Scott \$85 as hinged. Estimate \$100 - 150



- 350 ★★ **Confederacy**, 1863, 20¢ green (Scott 13), well centered within large margins, o.g., never hinged, Extremely Fine and choice. Scott \$45 as hinged. Estimate \$80 - 120

U.S. Possessions



- 351 ○ **Cuba**, 1899, 1c on 1¢ yellow green (Scott 221), a perfectly centered beauty with a neat light cancel, Extremely Fine and choice. Estimate \$40 - 60



- 352 ★ **Cuba**, Special Delivery, 1899, 10c on 10¢ blue, no period after "CUBA" (Scott E1a), a nice example of this error, o.g., hinged; mild gum toning not affecting the front, Fine. Scott \$575. Estimate \$150 - 200



- 353 ★ **Hawaii**, 1883, 12¢ red lilac (Scott 46), attractive color, o.g., lightly hinged, almost Very Fine. Scott \$90. Estimate \$50 - 75



- 354 ★ **Hawaii**, 1894, 12¢ blue (Scott 78), a used gem, perfectly centered within huge margins, Superb. Estimate \$30 - 40

British Commonwealth

GREAT BRITAIN



- 356 ○ **Great Britain, 1867, Queen Victoria, 9d pale straw, Spray of Rose watermark (Scott 52)**, duplex cancel, Fine to Very Fine. Scott \$300. SG 111. Estimate \$75 - 100



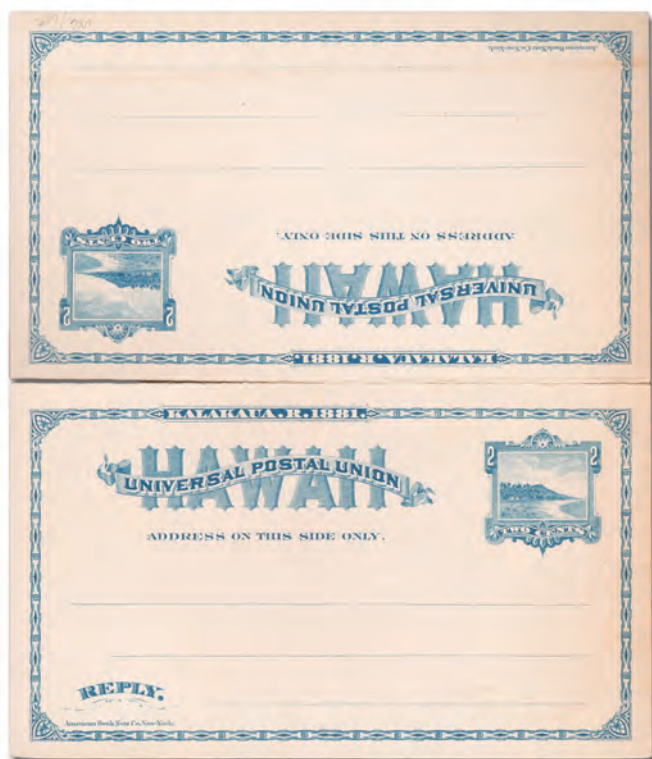
- 357 ○ **Great Britain, 1883, Queen Victoria, 2s6d lilac on white paper, Anchor watermark (Scott 96)**, Very Fine. Scott \$165. SG 178. Estimate \$50 - 75



- 358 ○ **Great Britain, 1884, Queen Victoria, 1s dull green (Scott 107)**, Fine to Very Fine. Scott \$300. SG 196. Estimate \$100 - 150



- 359 ○ **Great Britain, 1934, King George V re-engraved "Seahorses", 2s6d to 10s complete (Scott 222-224)**, Fine to Very Fine. Scott \$150. SG 450/2. Estimate \$50 - 75



- 355 ★✉ **Hawaii, Paid Reply Postal Card, 1883, 2¢+2¢ dark blue (Scott UY2)**, unsevered but folded, Very Fine. Scott \$450. Estimate \$50 - 75



- 360** ★ **Great Britain, 1952-54, Queen Elizabeth II (Wilding Portrait), 1/2d to 1s6d complete (Scott 292-308), Tudor Crown watermark, set of 17, o.g., very lightly hinged, Fine to Very Fine. Scott \$101. SG 515/31. Estimate \$30 - 68**



- 363** ○ **Canada, 1855, Jacques Cartier, 10d blue, thick paper (Scott 7a), margins all around (large on 3 sides), light grid cancel; tiny barely visible corner thin, otherwise Fine to Very Fine. Scott \$2,000. Estimate \$400 - 600**

AUSTRALIA AND CANADA



- 361** S **Australia, 1919, Kangaroo and Map, £2 black & rose, overprinted "Specimen" (Scott 58 var.), 3rd watermark, excellent color and impression, o.g., lightly hinged; some slightly nibbed perfs at top, Fine to Very Fine. SG 45s; £5,000 as normal (\$6,380). Estimate \$100 - 150**

Gibbons prices the 10s, £1 and £2 with specimen overprints at approximately 10% of the regular price.



- 364** ○ **Canada, 1859, Prince Albert, 10¢ black brown (Scott 16), faintly canceled; typical centering and perf faults at bottom, still a collectible example of this rare early classic, Very Good. Scott \$6,500. Estimate \$400 - 600**



- 365** ○ **Canada, 1859, Jacques Cartier, 17¢ slate blue (Scott 19a), margins all around, neat light grid cancel, Fine to Very Fine. Scott \$225. Estimate \$75 - 100**



- 362** ○ **Canada, 1851, Prince Albert, 6d slate violet, laid paper (Scott 2), 3 1/2 large margins, target cancel, almost Fine. Scott \$1,500. Estimate \$200 - 300**



- 366** ○ **Canada, 1868, Large Queen, 1¢ brown red (Scott 22), deep rich color, neat Montreal 1869 c.d.s., Fine. Scott \$160. Estimate \$50 - 75**



- 367 ○ **Canada, 1868, Large Queen, 1¢ yellow orange (Scott 23)**, superlative centering that approaches perfection, with large margins and excellent color, a gem! lightly canceled, Extremely Fine. Scott \$250. Estimate \$200 - 300



- 368 ○ **Canada, 1875, Large Queen, 5¢ olive green, perf 11½ (Scott 26)**, good color, neat light cancel, Fine. Scott \$200. Estimate \$60 - 80



- 369 ○ **Canada, 1868, Large Queen, 6¢ dark brown, on soft white (blotting) paper (Scott 27 var.)**, well centered and with margins all around, neat 1869 c.d.s.; couple small thins, Very Fine appearance, Unitrade prices this variety used at C\$1250 for V.F. and C\$500 for Fine. Unitrade 27ii. Estimate \$200 - 300



- 370 ○ **Canada, 1868, Large Queen, 12½¢ blue (Scott 28)**, beautifully well centered, neat grid cancel, Extremely Fine. Scott \$125. Estimate \$75 - 100



- 371 ★ **Canada, 1876, Small Queen, 5¢ slate green (Scott 38)**, huge margins, o.g., hinged, Fine to Very Fine. Scott \$800. Estimate \$250 - 350



- 372 ○ **Canada, 1876, Small Queen, 5¢ slate green (Scott 38)**, 12 examples showing a range of different cancels and some minor shade variations, nice color and clear collectible postmarks; a complete iny perf flaws noted, otherwise generally Fine to Very Fine with a few Very Fine, a nice specialist's lot. Scott \$330. Estimate \$75 - 100



- 373 ★ **Canada, 1872, Small Queen, 6¢ yellow brown (Scott 39)**, disturbed o.g., Fine. Scott \$600. Estimate \$150 - 200



- 374 (★) **Canada, 1872, Small Queen, 6¢ yellow brown (Scott 39)**, beautifully well centered within large margins, a beautiful stamp, unused without gum, Extremely Fine. Scott \$600 for o.g. Estimate \$100 - 150



- 378 ★ **Canada, 1880, Small Queen, 10¢ magenta (Scott 40a)**, deep rich color, o.g., hinged, Fine. Scott \$1,600. Estimate \$200 - 300



- 375 ★ **Canada, 1877, Small Queen, 10¢ dull rose lilac (Scott 40)**, large part o.g., Fine. Scott \$1,600. Estimate \$400 - 600



- 379 ★ **Canada, 1888, Small Queen, 5¢ gray (Scott 42)**, well centered, o.g., hinge remnant, Very Fine. Scott \$230. Estimate \$75 - 100



- 376 ★ **Canada, 1877, Small Queen, 10¢ dull rose lilac (Scott 40)**, good color, o.g., hinged, Fine. Scott \$1,600. Estimate \$300 - 400



- 380 ★ **Canada, 1888, Small Queen, 6¢ red brown (Scott 43)**, almost perfectly centered within huge jumbo margins, o.g., hinged; a few slightly irregular perfs (as often with this issue), Extremely Fine overall. Scott \$225. Estimate \$75 - 100



- 377 ○ **Canada, 1877, Small Queen, 10¢ dull rose lilac, 10¢ magenta and 10¢ deep rose lilac (Scott 40, 40a, 40b)**, a nice selection of very distinct shades, nice centering and light cancels, Very Fine. Scott \$270. Estimate \$100 - 150



- 381 ★ **Canada, 1893, Small Queen, 8¢ violet black (Scott 44)**, deep rich color, slightly disturbed (sweated) o.g., Fine. Scott \$260. Estimate \$60 - 80



- 382 ★★ **Canada, 1897, Queen Victoria Jubilee, 1/2c black (Scott 50)**, nicely centered, o.g., never hinged, Fine to Very Fine. Scott \$300.
Estimate \$100 - 150



- 383 ★★ **Canada, 1897, Queen Victoria Jubilee, 3c bright rose (Scott 53)**, a lovely gem with magnificent centering and margins, o.g., never hinged (tiny gum skip), Extremely Fine to Superb. Scott \$75.
Estimate \$100 - 150



- 384 ★★ **Canada, 1897, Queen Victoria Jubilee, 6c yellow brown (Scott 55)**, a lovely corner margin single, nicely centered and with bright rich color, o.g., never hinged (with a tiny bit of offset on the gum), Very Fine. Scott \$575.
Estimate \$300 - 400



- 385 ★★ **Canada, 1897, Queen Victoria Jubilee, 15c steel blue (Scott 58)**, beautifully well centered, o.g., never hinged, Very Fine to Extremely Fine. Scott \$650. Estimate \$350 - 500



- 386 ★ **Canada, 1897, Queen Victoria Jubilee, 15c steel blue (Scott 58)**, Fine. Scott \$275.
Estimate \$60 - 80



- 387 ★ **Canada, 1897, Queen Victoria Jubilee, 20c vermilion (Scott 59)**, o.g., hinged; small thin, Fine. Scott \$275. Estimate \$75 - 100



- 388 ★ **Canada, 1897, Queen Victoria Jubilee, 50c ultramarine (Scott 60)**, superlative, near perfect centering and great color, o.g., hinge remnant, Extremely Fine. Scott \$375.
Estimate \$200 - 300



- 389 ★ **Canada, 1897, Queen Victoria Jubilee, 50c ultramarine (Scott 60)**; light gum stain at top, Fine to Very Fine. Scott \$375.
Estimate \$100 - 150



- 390 ★ **Canada, 1897, Queen Victoria Jubilee, 50¢ ultramarine (Scott 60)**, beautifully fresh and well centered, o.g., lightly hinged, Very Fine. Scott \$375. Estimate \$100 - 150



- 391 ★★ **Canada, 1903, King Edward VII, 1¢ green (Scott 89)**, well centered within huge jumbo margins, o.g., never hinged, Very Fine to Extremely Fine. Scott \$115. Estimate \$60 - 80



- 392 ★ **Canada, 1903, King Edward VII, 20¢ olive green (Scott 94)**, disturbed o.g., Fine to Very Fine. Scott \$800. Estimate \$250 - 350



- 393 ★ **Canada, 1912, King George V "Admiral", 5¢ dark blue (Scott 111)**, o.g., hinged, Fine to Very Fine. Scott \$175. Estimate \$50 - 75



- 394 ★田 **Canada, 1923, King George V "Admiral", 1¢ yellow coil, die I, imperf horizontally (Scott 126c)**, block of 4, o.g., lightly hinged, Fine. Scott \$700. Estimate \$200 - 300



- 395 ★田 **Canada, 1922, King George V "Admiral", 2¢ green coil, imperf horizontally (Scott 128a)**, block of 4, o.g., barest trace of hinge (appears never hinged), Very Fine. Scott \$65. Estimate \$20 - 30



- 396 ★ **Canada, 1935, 50¢ Parliament (Scott 226)**, o.g., lightly hinged, Fine to Very Fine. Scott \$25. Estimate \$10 - 15



- 397 ★ **Canada, 1935, \$1 Champlain Monument (Scott 227)**, o.g., hinged, Fine to Very Fine. Scott \$55. Estimate \$20 - 30



- 400 ★★ **Canada, Airmail, 1930, 5¢ olive brown (Scott C2)**, immaculate and perfectly centered, o.g., never hinged, Extremely Fine. Scott \$100. Estimate \$50 - 75



- 398 ★ **Canada, 1938, \$1 Chateau (Scott 245)**, Very Fine. Scott \$70. Estimate \$20 - 30



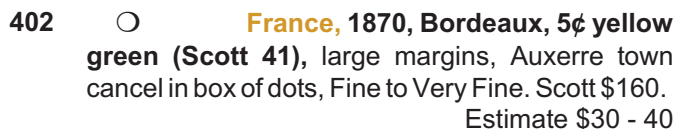
- 399 ★★ **Canada, 1960's-70's, small assortment of mint plate blocks** (mostly plates but also a few coils, singles, blocks, unexploded booklets, etc.) in glassines; spot checked and much is very fine and **never hinged** with a number of premium items noted like Scott 458b pack, 457b pack, 458bp pack 465A, 465B, 486, 492, 494, 511p, 513-514, 599, 601, 684-686, 687-688 and undoubtedly more (these few highlights would retail for more than \$350; total face value is \$135 approximately; a nice clean post office fresh lot, o.g., never hinged, Very Fine. Estimate \$250 - 350

BULGARIA THROUGH FRENCH COLONIES



-

- 406 ★ **France, 1872, Ceres, 30c brown on yellowish (Scott 62)**, large part o.g., Fine. Scott \$800. Yvert 56. Estimate \$250 - 350



- 403 ○ **France, 1871, Napoleon III perforated, 5c green on pale blue (Scott 24), Fine.**
Scott \$110. Yvert 35. Estimate \$30 - 40



-
- POSTES FRANÇAISES
LÉGION TRICOLERE
1.20
8.80
- POSTES FRANÇAISES
LÉGION TRICOLERE
1.20
8.80
- POSTES FRANÇAISES
LÉGION TRICOLERE
1.20
8.80
- POSTES FRANÇAISES
LÉGION TRICOLERE
1.20
8.80

- page 68



- 408 ★ **France, 1943, 1.20fr-5fr Pétain's Birthday (Scott B157a)**, strip of 5, o.g., very lightly hinged, Very Fine. Scott \$100. Yvert 580A.
Estimate \$25 - 35



- 409 ○ **France, Postage Due, 1870, 15c black, litho (Scott J2)**, Fine. Scott \$250. Yvert 4.
Estimate \$60 - 80



- 410 ★★ **France, 1954-69, 10 unexploded Red Cross booklets (Scott B291a/B421a)**, B291a, B356a, B365a, B374a, B385a, B392a, B402a, B409a, B421a and B423a, o.g., never hinged, Very Fine.
Estimate \$30 - 40



- 411 ★★ **French Colonies: Alaouites, 1925, 0.50p yellow green, surcharge error, missing "S" in "ALAOUITES" (Scott 27d)**, at left in pair with normal, o.g., never hinged, Very Fine. Scott \$75.
Estimate \$40 - 60

GERMANY THROUGH VATICAN



- 412 (★) **Germany, 1935, OSTROPA souvenir sheet (Scott B68)**, unused without gum; some perf separations and wear at the O in the watermark, Fine to Very Fine. Scott \$975 for no gum. Michel Block 3.
Estimate \$300 - 400



- 413 ○ **Germany: Federal Republic, 1953, Welfare complete (Scott B334-337)**, Very Fine. Scott \$80.
Estimate \$30 - 40



- 414 ★★ **Greece, 2d -10d complete (Scott C1-4)**, o.g., never hinged, Very Fine. Scott \$80.
Estimate \$30 - 40



- 415 ★ **Italy, 1891 (Scott 67), o.g., hinged.**
Scott \$500. Estimate \$150 - 200



- 416 ★ **Italy, 10L deep blue (Scott J18), o.g., hinged, Fine to Very Fine.** Scott \$250.
Estimate \$75 - 100



- 417 ★ **Monaco, 1938, Prince Louis II souvenir sheet (Scott 159), o.g., lightly hinged, Very Fine.** Scott \$65. Estimate \$30 - 40



- 418 ★ **Monaco, 1980, Europa special presentation block (Scott 1228a var.), Very Fine.** Yvert BS13; €325 (\$350). Estimate \$100 - 150



- 419 ★ **Monaco, 1947, Louis II souvenir sheet and 1949 Red Cross souvenir sheets complete, perf and imperf (Scott B94//B99a), Fine to Very Fine.** Scott \$120. Yvert 3,3a. Estimate \$40 - 60



- 420 ▲ **Norway, 1941, 1kr University of Oslo (Scott 246), tied on piece by neat first day cancel, Very Fine.** Scott \$65. Estimate \$30 - 40



- 421 ○ **Norway**, 1941, 20ö+80ö
Norwegian Legion (Scott B24), neat cancel, Very Fine. Scott \$100. Michel 241. Facit 264. Estimate \$40 - 60



- 422 ★ **Portugal**, 717-720 50c-5 complete
(Scott 717-720), o.g., very lightly hinged, Very Fine. Scott \$111. Estimate \$30 - 40



- 423 ★ **Portugal**, 1931, St. Anthony complete
(Scott 528-533), Very Fine. Scott \$102. Estimate \$30 - 34



- 424 ○ **Switzerland**, Postage Due, 1897,
500c olive green & red (Scott J28), Fine to Very Fine. Scott \$225. Michel P 22 var. Zumstein P 22GII. Estimate \$75 - 100



- 425 ★ **Vatican**, Airmail, 1949 U.P.U. complete
(Scott C18-C19), o.g., hinged, Fine to Very Fine. Scott \$95. Sassone S.503. Estimate \$40 - 60



- 426 ○ **Vatican**, Airmail, 1949 U.P.U. complete
(Scott C18-C19), Fine to Very Fine. Scott \$95. Sassone S.503. Estimate \$40 - 60



- 427 ○ **Vatican**, Airmail, 1951 Gratianus complete
(Scott C20-C21), Fine to Very Fine. Scott \$220. Sassone S.504. Estimate \$60 - 80

Asia, Latin America and Worldwide

ASIA COLLECTIONS AND CHINA: TAIWAN PROVINCE



- 428** ★/○ **Asia, 1890's-1970's, varied collection of mint and used**, including China Republic and Provinces used, some Japan Chrysanthemums, a few early PRC (some are reprints), a couple Vietnam War items including an interesting 1971 letter from a colonel, other collateral items - quite a mishmash. Imaged in full on our web site - have a look. Estimate \$150 - 200



- 429** ★田 **China: Taiwan Province, 1947, Chiang Kai-shek 60th Birthday complete (Scott 29-34)**, sheets of 50; some perf separations on the 10.00 value, mild gum toning throughout, otherwise Fine to Very Fine. Chan TP54-59. Estimate \$100 - 150



- 430** ★★田 **China: Taiwan Province, 1947, Chiang Kai-shek 60th Birthday complete (Scott 29-34)**, sheets of 50, a lovely set, o.g., never hinged; some minor gum toning throughout, otherwise Fine to Very Fine. Chan TP54-59. Estimate \$100 - 150

GUATEMALA



- 431** S **Guatemala, 1926, 5p Monument to Pres. Granados, with Waterlow & Sons diagonal specimen overprint (Scott 228)**, specimen type 1a, 42 degrees, unused without gum, Very Fine, only 49 sheets printed. Estimate \$200 - 300

Became available in 1968 from the company archives, it is perforated 12.4 on ungummed paper with a 1.5 mm hole and the specimen overprint.



- 432 S田 **Guatemala, 1919, 90c Vocational School, with Waterlow & Sons diagonal specimen overprint (Scott 164)**, complete sheet of 9, specimen type II, 41 degrees, unused without gum, Very Fine, *only 6 sheets printed*.

Estimate \$400 - 600

Became available in 1968 from the company archives, it is perforated 12/4 on ungummed paper with a 1.5mm hole and the specimen overprint.



- 434 S★★田 **Guatemala, 1917, 25c Re-election of Pres. Estrada Cabrera, with Waterlow & Sons diagonal specimen overprint (Scott 158)**, complete sheet of 9, specimen type 1a, o.g., never hinged, Very Fine, *only 48 sheets printed*.

Estimate \$300 - 400

Became available in 1968 from the company archives, it is perforated 12.4 with a 1.5 mm hole and the specimen overprint.



- 433 S★★田 **Guatemala, 1907, 12 1/2c Declaration of Independence, with Waterlow & Sons specimen overprint (Scott 132)**, complete sheet of 9, specimen type 1a, 6 degrees, o.g., never hinged, Very Fine, *only 36 sheets issued*.

Estimate \$300 - 400

Became available in 1968 from the company archives, it is perforated 12.4 with a 1.5mm hole and the specimen overprint.



- 435 S田 **Guatemala, 1919, 3p National Emblem, with Waterlow & Sons diagonal specimen overprint (Scott 165)**, complete sheet of 9, specimen type 1a 19 degrees, unused without gum, Very Fine, *only 32 sheets printed*. Estimate \$300 - 400

Became available in 1968 from the company archives, it is perforated 12.4 on ungummed paper with 1.5 mm hole and the specimen overprint.



- 436 S **Guatemala, 1919, 30c Radio Station, with Waterlow & Sons diagonal specimen overprint (Scott 162)**, complete sheet of 9, specimen type 1a, 18 degrees, without gum as issued, Very Fine, only 22 sheets printed.

Estimate \$300 - 400

Became available in 1968 from the company archives, it is perforated 12/4 on ungummed paper with a 1.5mm hole and the specimen overprint.



- 438 S **Guatemala, 1921, 15p Bridge in unadopted colors, with Waterlow & Sons diagonal specimen overprint (Scott 174)**, complete sheet of 9, specimen type 1a, without gum as issued, Very Fine, only 28 sheets printed.

Estimate \$200 - 300

Became available in 1968 from the company archives, it is perforated 12.4 on ungummed paper with a 1.5 mm hole and the specimen overprint.



- 437 S **Guatemala, 1919, 60c Maternity Hospital, with Waterlow & Sons diagonal specimen overprint (Scott 163)**, complete sheet of 9, specimen type 1, 18 degrees, unused without gum, Very Fine, only 30 sheets printed.

Estimate \$300 - 400

Became available in 1968 from the company archives, it is perforated 12/4 on ungummed paper with a 1.5mm hole and the specimen overprint.



- 439 (★) **Guatemala, 1921, 1.50p Mayan Stele in unadopted colors, with Waterlow & Sons diagonal specimen overprint (Scott 172)**, complete sheet of 9, specimen type 1, 20 degrees, unused without gum, Very Fine.

Estimate \$200 - 300

Became available in 1968 from the company archives, it is perforated 12.4 on ungummed paper with a 1.5 mm hole and the specimen overprint.



- 440 S★★田 **Guatemala, 1902, 50c Columbus Theater, with Waterlow & Sons diagonal specimen overprint (Scott 120)**, complete sheet of 9, specimen type I 18 degrees, o.g., never hinged, Very Fine, *only 19 sheets issued*.

Estimate \$300 - 400



- 442 S田 **Guatemala, Telegram Tax Stamp, 1919, 25c red, with Waterlow & Sons diagonal specimen overprint**, complete sheet of 9, unused without gum, Very Fine. Estimate \$200 - 300

Paid a tax on telegrams for reconstruction of telegraph building destroyed by fire a couple of years earlier.



- 441 S田 **Guatemala, Telegram Tax Stamp, 1919, 12½c green, with Waterlow & Sons diagonal specimen overprint**, complete sheet of 9, specimen type Ia, without gum as issued, Very Fine, *only 49 sheets printed*. Estimate \$200 - 300

Became available in 1968 from the company archives, it is perforated 12/4 on ungummed paper with a 1.5mm hole and the specimen overprint.

PERSIA AND WORLDWIDE



- 443** (★) **Iran, 1879, Nasser-eddin Shah Qajar, 5k blue and black (Scott 42)**, unused without gum, Fine to Very Fine. Scott \$400.
Estimate \$100 - 150



- 444** (★) **Iran, 1882, Nasser-eddin Shah Qajar, 10fr buff, red & black (Scott 59)**, unused without gum, Very Fine. Scott \$150. SG 10.
Estimate \$40 - 60



- 445** ★★/★ **Worldwide, 1980's-2000's, a group of 24 retired APS circuit books**, with a variety of material, both US and worldwide, many 100's of stamps predominantly mint OG, with much LH and NH; noted better US including Scott 501, 527, 619 and 804//832, E8, etc.; worldwide items include (all mint OG, LH unless noted) Burundi C199-C202 + 202a, China 988+988 var, Columbia C355, Cuba C122-126, Germany DDR 226a, Haiti 616P-616Q, Italy 514, Japan 474-477, Korea 108, 114-115, Liberia C67a, Luxembourg 261-264, Panama C114b (signed!), Portugal 784-791, Romania C57, Russia 1392-1392a-1393-1393a, St. Pierre 397-398, Spanish Morocco 280-291 and E11, Syria 349-350 and C154-155, Togo C223a etc.; topicals include several books of Nudes on Stamps and other art related subjects; overall a very clean and useful group of mostly different stamps, sets and souvenir sheets with just these highlights cataloging well in excess of \$1000, o.g., some never hinged / some hinged, Fine to Very Fine. Estimate \$500 - 750

Interested in consigning your collection ?

Contact us today to see how
we can help you.

Our team of specialists will assist you in determining your collection's value and send you a proposal of how we can help you meet your goals.

Golden Oak Online Auctions can coordinate a pickup at your location or you can take your packages to FedEx and send your items to us fully insured on our account. Prior to the auction you will receive a list of all lots that have been consigned by you via email. After the auction, you will be notified of the results of sale again via email. Assuming that payment has been made to GOOA for all the property that sold, we will send the net proceeds (the hammer price of each lot less commission and any other agreed upon fees) 45 days after the auction.



Golden
Oak | Online
Auctions

p. o. box 244
gordon, tx 76453 · usa
469.437.7658 · selling@gooaucs.com

Terms & Conditions of Sale

THE PLACING OF A BID SHALL CONSTITUTE ACCEPTANCE OF THESE CONDITIONS OF SALE BETWEEN BIDDER AND GOLDEN OAK ONLINE AUCTIONS ("GOOA")

BIDDING

1. ALL bids are per lot, as numbered in the online presentation. GOOA, as agent for the consignor, shall regulate the bidding and shall determine the manner in which the bidding shall be conducted. GOOA reserves the right to withdraw any lot prior to sale (without liability to any potential purchaser or agent), to re-offer any withdrawn lot, and to refuse any bid believed not made in good faith. Estimates of sales prices contained in the online presentation reflect the best judgment of GOOA and its consultants.

2. (a) Bids shall be made in the increments set forth on the website. Bidding steps are as published on the website. Bids made out of increment will be reduced to the next increment. Example: \$603 bid will be reduced to \$600, etc.

(b) The highest bid acknowledged by GOOA shall prevail. Should a dispute arise between bidders GOOA alone shall determine who the successful bidder is and whether to reoffer the lot in dispute. Should a dispute arise after the sale, GOOA's records shall be conclusive. On all lots sold, a buyer's premium of 20% on the hammer price is payable by the buyer to GOOA together with any sales and use tax or customs duties.

3. (a) GOOA reserves the right to bid on behalf of clients (and consignors or vendors) but shall not be liable for errors and omissions in executing instructions to bid, however received, and whether such errors or omissions be those of the bidder or agent or those of GOOA.

(b) Some lots being offered may be subject to a reserve price.

(c) In some instances, consignors may have been advanced monies against the sale of their consigned material and GOOA therefore will have a security interest in the consigned material over and above the normal auction commission.

(d) Any purchases made by a consignor or vendor or his agent on his own lots shall be considered as a sale subject to commissions and sales tax as applicable.

PAYMENT FOR PURCHASES

4. Payment for lots, including those on which opinions for experts are desired shall be made as follows: successful bidders will be notified of lots purchased immediately following the sale. Before GOOA will send such lots, payment in full must be received by GOOA within five (5) business days of receipt of the aforesaid notification by the bidder. However, a purchaser known to GOOA at its option may have purchases delivered or forwarded for immediate payment. Unless otherwise acceptable to GOOA, payment is to be made only in the form of cash, bank check or certified check, personal check (which must clear prior to delivery of lots), credit card (AMEX, Visa, MasterCard and Discover), PayPal or a bank wire transfer (Please contact us for our wiring instructions.) Payments made by credit card are accepted as a courtesy without surcharge, if paid within 15 days of sale date.

5. Title shall not pass to the purchaser until full payment has been received by GOOA as agents for the consignor or vendor.

6. Mailed delivery of purchases will be to the address on file and proof by GOOA of receipt of a sending at the advised address shall constitute delivery. All charges for handling, delivery and insurance obtained by GOOA on behalf of the purchaser shall be added to the purchase price.

7. (a) Purchasers agree to pay for lots as specified in Condition of Sale 4 and no credit is extended; a late payment charge of 2% per month or fraction thereof shall be added if payment is not made in accordance with the aforesaid conditions.

(b) In the event that a bidder shall fail to comply with these conditions of sale ("non-complying bidder"), then, as to any lot with respect to which such failure to comply occurs, GOOA, may, in its sole discretion, re-offer such lot during the same auction or at an auction at a later time, or by private treaty at such time as GOOA, in its sole discretion, deems appropriate and the non-complying bidder shall be liable for the deficiency, if any, between the hammer price and the net proceeds of a sale to a subsequent purchaser, whether at auction or by private treaty, as well as for all costs and expenses of both sales, all other charges due thereunder, including commissions with respect to both sales, whether payable to GOOA or to a third party and all incidental damages. It shall be in GOOA's sole discretion to determine whether to re-offer the lot therefore hammered-down to a non-complying bidder at the same auction, or by private treaty in due course, or at a subsequent auction conducted by GOOA. In no event shall any surplus arising from the sale of a re-offered lot be payable to a non-complying bidder.

(c) A defaulting purchaser shall be deemed to have granted GOOA a security interest in property in GOOA's possession owned by such purchaser. GOOA shall have all of the rights afforded a such a purchase with respect to such property and may apply against such obligations all monies held or received by it for the account of, or due from GOOA to such purchaser. GOOA is authorized to file a financing statement in order to perfect its rights as a secured party.

(d) If GOOA takes any legal steps to secure payment of a delinquent account, the defaulting purchaser shall be liable for all legal and other expenses incurred by GOOA to secure such payment, including but not limited to a reasonable allowance for attorneys' fees. For purposes of this paragraph, the term legal steps shall be deemed to include any and all consultation by GOOA with its attorneys with respect to all matters arising out of a delinquent account.

Terms & Conditions of Sale

QUALITY AND AUTHENTICITY: Stamps, Autographs, Art and All Other Non-Numismatic

8. Each lot is sold as genuine and correctly described, unless specifically described as "sold as is". Potential buyers may request additional imaging or clarification to GOOA on any lot(s).

(a) Quality. Any lot which a purchaser considers to be incorrectly described may be returned to GOOA within two weeks of its receipt by such purchaser ("returning purchaser"), provided, however, that the same is received by GOOA within four weeks of the date of the auction; however, GOOA may, in its discretion, refuse acceptance of such returned lot. In the event that a dispute cannot be resolved by reference to a mutually acceptable authority, and GOOA thereupon undertakes to re-offer the lot with a description identical to the description disputed, the returning purchaser shall be liable for the deficiency, if any, between the proceeds of the sale to the returning purchaser and the proceeds of a sale to a subsequent purchaser, as well as for all costs and expenses of the re-sale, including commission, and all incidental damages. Any lot, the description of which is disputed, must be returned intact and in the original packaging and in the condition received (unaltered) by the purchaser. The following lots are not returnable except at the discretion of GOOA: (i) lots examined by postal viewers; (ii) lots on account of their appearance, if they are illustrated online; (iii) lots described as having repairs, defects or faults for any reason, (iv) lots containing more than ten (10) items.

(b) Authenticity. If an opinion of a mutually acceptable authority is desired, the period of time within which a lot must be received by GOOA will be extended however, GOOA must be notified within 15 days of the date of the auction. Any lot which is declared otherwise than genuine by a mutually recognized authority is returnable, provided such lot is received by GOOA within four weeks of the date of the auction. Proof that a mutually acceptable authority declines to express an opinion is not grounds for the return of a lot. (i) Expenses incurred by a purchaser in the submission and the return of a lot under Conditions of Sale 7 is not subject to refund. (ii) Numerical grading is subjective and is based upon the condition of each issue. Lots may not be returned if a third party grades a stamp at lower than our grade. (iii) Lots with existing certificates from any widely accepted and reputable expertizing authority, within their specialty and dated within the last seven (7) years from the date of sale, will be offered and sold on an "as-is" basis and as so stated on the certificate. Such lots may not be returned for any reason, including but not limited to a contrary verbal or written opinion or certificate.

SALES TAX/CUSTOMS DUTIES

9. Unless presentation of satisfactory proof that it is exempted by law, a purchaser shall pay to GOOA the sales and use tax of the State claiming jurisdiction. Buyers outside the U.S. are responsible for all customs duties. A purchaser shall indemnify GOOA and hold it harmless of and from any claims of any jurisdiction for sales taxes relating to the purchase of articles at the auction, whenever the same may arise.

APPLICABLE LAW, JURISDICTION, ETC.

10. All matters arising out of this auction shall be governed by the laws of the state of Texas without giving effect to the choice of law principles thereof.

ARBITRATION

11. Any controversy or claim arising out of or relating to this auction shall be settled by arbitration in the city of Dallas, state of Texas in accordance with the rules of the American Arbitration Association and judgment upon the award rendered by the arbitrator or arbitrators may be entered in any court having jurisdiction.

JURISDICTION AND VENUE OF ACTIONS

12. The purchaser at this auction:

(a) consents and submits to the jurisdiction of the courts of the state of Texas and of the courts of the United States for a judicial district within the territorial limits of the state of Texas for all matters arising out of this auction sale, including, without limitation, any action or proceeding instituted for the enforcement of any right, remedy, obligation and liability arising under or by reason thereof; and

(b) consents and submits to the venue of such action or proceeding in the city of Dallas, state of Texas (or such judicial district of a court of the United States as shall include the same), and

(c) further consents that service of process in any action relating thereto may be effected by registered mail, return receipt requested address to the purchase at the address given to the auctioneer at the time of the sale.

BIDS BY TELEPHONE

13. (a) Must be confirmed in writing unless waived by GOOA.

(b) Any errors are the responsibility of the bidder.

(c) No bids accepted less than 1 hour before the commencement of the sale except via our live auction platform.

BIDS BY EMAIL

14. Bids must be received 1 hour before sale commences — be sure to use EMAIL: bids@gooaucs.com