

Auction 27
August 1, 2020
Online Only

United States & Worldwide
Stamps and Postal History



Golden
Oak | Online
Auctions

Stamps and Postal History

Internet only, beginning at 11:00 AM Eastern time (10:00 AM Central time, 8:00 AM Pacific time)

British Commonwealth

Great Britain	1-5
Bermuda and Canada	6-25
Hong Kong through Tonga	26-35

Europe and Colonies

Albania, Austria, Belgium, Bulgaria	36-51
France and Colonies	52-64
Germany	65-74
Italy	75-86
Liechtenstein through San Marino	87-91
Scandinavia	92-96
Switzerland	97-109
Yugoslavia	110-111

Asia and Latin America

Congo and Israel	112-113
Japan	114-119
Laos and Mexico	120-121

United States

Early Postal History	122-129
Civil War Covers including Patriotics	130-135
Fancy Cancels	136-143
1845-1869 Issues	144-169
1870-1888 Bank Note Co. Issues	170-181
1890-1898 Issues	182-211
1901-1907 Issues	212-242
1908-1913 Issues	243-267
1912-1918 Washington-Franklin Issues	268-319
1919-1929 Issues	320-351
1932-2002 Issues	352-383
Airmail	384-406
Special Delivery and Registry	407-423
Postage Due	424-445
Offices in China	446-453
Officials	454-463
Newspaper, Parcel Post, Telegraphs	464-474
Postal Stationery	475-479
Revenue and Duck Stamps	480-492
Sanitary Fair and Test Stamps	493-494
Collections and Groups	495-504
Confederacy	505-513

U.S. Possessions

Canal Zone through Hawaii	514-522
Ryukyus	523-529

British Commonwealth



- 1  **Great Britain, 1859-1911, Interesting group of foreign destination covers, 19 in all** (one postal card) mainly from Great Britain to various destinations including Austria, France, Germany, India, Mexico, Netherlands, New Zealand, Portugal and the U.S.; all with eye-catching transit stamps, docketing & receiving postmarks and postage due markings; a great lot for study of mail abroad with a few that are definitely exhibit worthy! All are imaged, Fine to Very Fine.
Estimate \$2,500 - 3,500



- 2 ★ **Great Britain, 1840, 1d black (Scott 1)**, a decent unused example of the first regularly issued postage stamp, o.g., hinged; small thin, about Fine appearance.
Scott \$11,000. SG 2. Estimate \$750 - 1,000



- 3 ○ **Great Britain, 1840, 1d black (Scott 1)**, margins in places, black Maltese Cross cancel, Very Good, an affordable example of the world's first postage stamp.
Scott \$375. SG 2; £375 (\$480). Estimate \$40 - 60



- 4 ○ **Great Britain, 1902, King Edward VII, De La Rue printing, £1 dull blue green (Scott 142)**, fresh appearance and well centered, neat 1904 cancel; mild toned spots on reverse, Fine to Very Fine.
Scott \$825. SG 266; £825 (\$1,050).
Estimate \$200 - 300



- 5 ★ **Great Britain, 1915, King George V "Seahorse", De La Rue printing, 2s6d yellow brown (Scott 173d)**, slightly brownish o.g., lightly hinged, Very Fine.
Scott \$300. SG 406; £225 (\$290).
Estimate \$75 - 100



- 6 ★ **Bermuda, 1938, King George VI, £1 purple & black on red, perf 14 (Scott 128a)**, the earliest version of this issue, o.g., lightly hinged, Extremely Fine.
Scott \$300. SG 121; £275 (\$350).
Estimate \$100 - 150

It is noteworthy that Scott assigns the major number for the £1 to the more common 1951 printing (different shade and perforation) whereas Gibbons lists the scarcer first printing as the major number.



7 ★★ **Canada, 1888, Small Queen, 5¢ gray (Scott 42)**, bright fresh color, well centered, o.g., never hinged, Very Fine to Extremely Fine. Scott \$500. Estimate \$400 - 600



11 ★★ **Canada, 1918-22, King George V "Admiral", 1¢ yellow, die I and 3¢ brown, both wet printing (Scott 105, 108)**, fresh and immaculate, o.g., never hinged, Very Fine. Scott \$120. Estimate \$60 - 80



8 ★★ **Canada, 1888, Small Queen, 6¢ red brown (Scott 43)**, bright fresh color, especially nice for this issue, o.g., never hinged, almost Very Fine. Scott \$525. Estimate \$350 - 500



12 ★★ **Canada, 1912, King George V "Admiral", 7¢ yellow ocher (Scott 113)**, fresh and well centered, o.g., never hinged, Very Fine. Scott \$130. Estimate \$75 - 100



9 ★★ **Canada, 1897, Queen Victoria Jubilee, 2¢ green (Scott 52)**, fresh and well centered, o.g., never hinged, Very Fine. Scott \$93. Estimate \$60 - 80



13 ★★ **Canada, 1925, King George V "Admiral", 8¢ blue (Scott 115)**, a lovely fresh well centered example, o.g., never hinged, Very Fine. Scott \$93. Estimate \$50 - 75



10 ★★ **Canada, 1897, Queen Victoria Jubilee, 5¢ deep blue (Scott 54)**, great color and excellent centering, uncommonly choice, o.g., never hinged, Very Fine. Scott \$180. Estimate \$100 - 150



14 ★★ **Canada, 1925, King George V "Admiral", 10¢ bister brown (Scott 118)**, well centered, fresh, immaculate, o.g., never hinged, Extremely Fine. Scott \$95. Estimate \$60 - 80



- 15 ★ **Canada, 1925, King George V “Admiral”, 50¢ black brown (Scott 120)**, fresh, o.g., lightly hinged, Fine to Very Fine.
Scott \$90. Estimate \$40 - 60



- 19 ★★ **Canada, 1930, 50¢ Grand Pré (Scott 176)**, fresh, perfectly centered, immaculate, o.g., never hinged, Extremely Fine.
Scott \$350. Estimate \$250 - 350



Ex 16

- 16 ★ **Canada, 1928, King George V “Scroll” definitives, 1¢ to 20¢ (Scott 149-157)**, fresh and well centered throughout, Very Fine.
Scott \$405. Estimate \$200 - 300



- 20 ★★ **Canada, 1932, Quebec Citadel, 13¢ dull violet (Scott 201)**, perfectly centered and immaculate, o.g., never hinged, Extremely Fine.
Scott \$75. Estimate \$40 - 60



- 17 ★★ **Canada, 1929, \$1 Parliament (Scott 159)**, fresh and beautifully well centered, o.g., never hinged, Very Fine.
Scott \$575. Estimate \$350 - 500



- 21 ★★ **Canada, Airmail, 1930, 5¢ olive brown (Scott C2)**, immaculate and perfectly centered, o.g., never hinged, Extremely Fine.
Scott \$100. Estimate \$60 - 80



Ex 18

- 18 ★★ **Canada, 1930, King George V “Maple Leaf” definitives, 1¢ to 20¢ (Scott 162-170, 172-175)**, missing the 8¢ dark blue (catalogs \$55 NH), a fresh and immaculate set, o.g., never hinged, Very Fine.
Scott \$274. Estimate \$100 - 150



- 22 ★★ **Canada, Special Delivery, 1922, 20¢ carmine, dry printing (Scott E2)**, o.g., never hinged, Fine to Very Fine.
Scott \$220. Estimate \$100 - 150



23 ★★ **Canada, Special Delivery, 1930, 20¢ henna brown (Scott E4),** immaculate, o.g., never hinged, Very Fine. Scott \$125. Estimate \$60 - 80



27 ★★ **Hong Kong, 1938, King George VI, \$1 dull lilac & blue and \$10 green & violet, chalky paper (Scott 163,166),** o.g., never hinged, Fine to Very Fine. Scott \$354. Estimate \$75 - 100



24 ★★ **Canada, War Tax, 1915-16, 2¢ carmine and 2¢+1¢ brown, die II (Scott MR2, MR4),** both are immaculate, o.g., never hinged, Very Fine to Extremely Fine. Scott \$128. Estimate \$75 - 100



28 ★ **Ireland, 1922, Dollard Provisional Govt. overprint on King George V "Seahorse", 5s rose carmine (Scott 13),** vivid color and luxurious margins on crisp white paper, choice centering, a gem example, o.g., hinged, Very Fine to Extremely Fine. Scott \$90. SG 19; £90 (\$120). Estimate \$50 - 75

25 ★ **Canada, Collection Balance, 1897-1931, small group of interesting items (Scott 53//182, J1),** including # 53 VLH, 89 NH (tiny gum adherence - counted as LH), 125 LH, 141 NH, 142 VLH, 143 NH, 160 VLH, 180 NH, 182 NH, J1 NH, nice items, Very Fine, a useful lot for the dealer building stock or the collector filling in gaps. Scott \$233. Estimate \$50 - 75



29 ★ **Ireland, 1925, Free State overprint on King George V "Seahorse", narrow date, 2s6d chocolate brown (Scott 77),** rich color and luxurious margins on bright white paper, o.g., very lightly hinged if at all, Very Fine. Scott \$70. SG 83. Estimate \$40 - 60



26 (★) **Hong Kong, 1864, Queen Victoria, 24¢ green (Scott 18),** Crown CC watermark, lovely fresh color, a beautiful stamp, unused without gum, Fine to Very Fine; with 2008 David Brandon certificate. Scott \$575. SG 14; £650 (\$830). Yang 14. Estimate \$200 - 300



30 ★★ **Ireland, 1925, Free State overprint on King George V "Seahorse", narrow date, 10s dull gray blue (Scott 79),** vibrant color and luxurious margins on crisp white paper, o.g., never hinged, Fine to Very Fine. Scott \$425 as n.h. SG 85. Estimate \$150 - 200



Ex 31

- 31 ★ **Kenya, Uganda & Tanganyika, 1954-59, Queen Elizabeth II definitives almost complete (Scott 103-105, 107-117), missing only #106 (cats \$1), o.g., very lightly hinged.** Scott \$120. SG 167/180. Estimate \$35 - 50



Ex 34

- 34 ★ **Singapore, 1963, Flora & Fauna definitives, 1¢-\$5 complete (Scott 62-69), set of 8, o.g., very lightly hinged, Fine to Very Fine.** Scott \$71. SG 63/77. Estimate \$20 - 30



Ex 32

- 32 ★★ **St. Kitts-Nevis, 1935, King George V Silver Jubilee Set (Scott 72-75), o.g., never hinged, Very Fine to Extremely Fine.** SG 61-64. Estimate \$20 - 30



- 35 ✉ **Tonga, 1970, Tin Can Mail cover to the U.S.A., an interesting late usage with great content, neat labels and the famous "TIN CAN ISLAND CANOE MAIL" stamp, Fine to Very Fine.** Estimate \$20 - 30



- 33 ★ **Singapore, 1948, Silver Wedding complete (Scott 21-22), o.g., very lightly hinged, Very Fine.** Scott \$116. SG 31/32. Estimate \$25 - 35

Europe and Colonies



- 36 ★★ **Albania, 1992, 500th Anniversary of the Discovery of America, 5L, imperf (Scott 2423)**, Columbus never looked better, o.g., never hinged, Very Fine. Scott \$70. Estimate \$35 - 50



- 37 ○ **Austria, 1910, 10k Emperor's Birthday Jubilee (Scott 144)**, fresh and well centered, a premium example of this popular high value, neat corner cancel, Very Fine. Scott \$325. Michel 177. Estimate \$150 - 200



- 38 ★★ **Austria, 1950, Carinthia Plebiscite complete (Scott B269-B271)**, o.g., never hinged, Fine to Very Fine. Scott \$120. Michel 952-954. Estimate \$60 - 80



- 39 ★★ **Belgium, 1912, King Albert I, 5fr plum (Scott 102)**, a premium example of this high value, o.g., never hinged, Very Fine. Scott \$175. Michel 99. Estimate \$100 - 150



Ex 40

- 40 ★★ **Belgium, 1952, U.P.U. Congress complete (Scott 435-445, B514)**, o.g., never hinged, Fine to Very Fine. Scott \$262. Michel 929-940. Estimate \$150 - 200



Ex 41

- 41 ★ **Belgium, 1932, Cardinal Mercier complete (Scott B114-B122)**, o.g., hinged, Fine to Very Fine. Scott \$591. Michel 333-341. Estimate \$250 - 350



42 ★★ **Belgium, 1949, Van Der Weyden souvenir sheet (Scott B466A)**, flawless, o.g., never hinged, Very Fine.
Scott \$200. Michel Block 21. Estimate \$100 - 150



43 ★★ **Belgium, 1949, Jordaens souvenir sheet (Scott B466B)**, o.g., never hinged, Very Fine.
Scott \$200. Michel Block 22. Estimate \$50 - 75



44 ★★ **Belgium, 1952, Verheeren-Conscience complete (Scott B521-B522)**, o.g., never hinged, Fine to Very Fine.
Scott \$320. Michel 947-948. Estimate \$100 - 150



45 ★★ **Belgium, 1952, Verheeren-Conscience complete (Scott B521-B522)**, o.g., never hinged, Very Fine.
Scott \$320. Michel 947-948. Estimate \$100 - 150



46 ★★ **Belgium, 1957, Antarctic Expedition souvenir sheet (Scott B605a)**, immaculate, a "really cool" souvenir sheet for the ice topicalists out there, o.g., never hinged, Very Fine.
Scott \$175. Michel Block 25. Estimate \$100 - 150



- 47 ★★ **Belgium, 1960, World Refugee Year souvenir sheet (Scott B662a)**, o.g., never hinged, Very Fine.
Scott \$70. Estimate \$40 - 60



- 48 ★★ **Belgium, Parcel Post, 1933, 4fr on 6fr violet brown (Scott Q180)**, pristine, o.g., never hinged, Fine to Very Fine.
Scott \$90. Michel 7. Estimate \$30 - 40



- 49 ★★ **Belgium, Parcel Post, 1933, 4fr on 6fr violet brown (Scott Q180)**, flawless condition, o.g., never hinged, Fine to Very Fine.
Scott \$90. Michel 7. Estimate \$30 - 40



- 50 ★★ **Belgium, Booklet, 1953, Princess Charlotte (Scott B534a)**, complete and unexploded, o.g., never hinged, Fine to Very Fine.
Scott \$80. Estimate \$40 - 60



- 51 ★★ **Bulgaria, Airmail, 1932, Junkers and Rila Monastery issue complete (Scott C12-C14)**, o.g., never hinged (very minor gum disturbance on the 24L), Fine to Very Fine.
Scott \$83. Estimate \$60 - 80



- 52 ○ **France, 1870, Bordeaux, 5¢ yellow green (Scott 41)**, large margins, Auxerre town cancel in box of dots, Fine to Very Fine.
Scott \$160. Estimate \$50 - 75



- 53 ○ **France, 1854, Napoleon III imperforate, 5c green on greenish (Scott 13)**, gorgeous margins and centering, Strassbourg 1861 cancel, Extremely Fine. Scott \$63. Yvert 12; €90 (\$100). Estimate \$25 - 35

- 57 ★ **France, 1902, Mouchon Retouched, 25c blue (Scott 136)**, magnificent centering, o.g., hinged, Extremely Fine and choice. Scott \$100. Yvert 127. Estimate \$50 - 75



- 54 ○ **France, 1870, Bordeaux, 10c yellow bister (Scott 42a)**, huge margins, No. 532 in logenze of dots, Extremely Fine to Superb. Scott \$90. Yvert 43B; €100 (\$110). Estimate \$30 - 40



- 55 ○ **France, 1870, Bordeaux, 30c brown on yellowish (Scott 46)**, huge margins, Fine to Very Fine, *rarely found this nice*. Scott \$200. Yvert 47; €250 (\$270). Estimate \$60 - 80



- 56 (★) **France, 1870, 30c black brown (Scott 46a)**, large margins, unused without gum, Very Fine. Scott \$1,000 for no gum. Yvert 47b. Estimate \$250 - 350



- 58 ★★ **France, 1942, Tricolor Legion, vertical pair with partial albino impression (Scott B147a)**, with original protective paper, o.g., never hinged, Very Fine, *unusual*. Estimate \$25 - 35



- 59 ★★ **France, 1935, 50c+2fr Unemployed Intellectuals (Scott B43)**, o.g., never hinged, Very Fine.
 Scott \$125. Yvert 308; €135 (\$150).
 Estimate \$40 - 60



- 62 ★★ **France, Booklet, 1952, Red Cross (Scott B274a)**, complete and unexploded, o.g., never hinged, Fine to Very Fine, *one of the scarcer French booklets*.
 Scott \$375. Maury €485 (\$520).
 Estimate \$150 - 200



- 60 ★ **France, 1937, Samothrace complete (Scott B66-B67)**, o.g., very lightly hinged, Very Fine.
 Scott \$130. Yvert 354-355; €170 (\$180). Estimate \$40 - 60



Ex 63



- 61 ★ **France, 1943, 1.20fr-5fr Pétain's Birthday (Scott B157a)**, strip of 5, o.g., very lightly hinged, Very Fine.
 Scott \$100. Yvert 580A. Estimate \$25 - 35

- 63 ★★ **France, 1954-69, 10 unexploded Red Cross booklets (Scott B291a//B421a)**, B291a, B356a, B365a, B374a, B385a, B392a, B402a, B409a, B421a and B423a, o.g., never hinged.
 Estimate \$50 - 75



Ex 64



- 67 ○ **Germany: Berlin, 1948, 2m Black Overprint (Scott 9N18)**, neat c.d.s.
Scott \$375. Michel 18. Estimate \$150 - 200

- 64 ★★ **French Colonies: Syria, 1924, surcharges on Olympics issue of France complete (Scott 133-136)**, o.g., never hinged (!).
Scott \$120 as hinged. Estimate \$100 - 150



Ex 65



Ex 68

- 68 ★★ **Germany: Berlin, 1949, U.P.U. complete (Scott 9N35-9N41)**, o.g., never hinged, Very Fine.
Scott \$550. Michel 35-41. Estimate \$300 - 400

- 65 ✉ **Germany, 1929-36, Zeppelin, Hindenburg and catapult covers**, interesting mixture of 14 covers and postcards all with neat stamps, postmarks and transit cancels. Includes 6 Zeppelin covers (including a nice Polar Flight cover), 6 Hindenburg covers and 2 catapult covers, generally Fine to Very Fine. Estimate \$400 - 600



- 69 ★★ **Germany: Berlin, 1953, 20pf Olympic Stadium (Scott 9N102)**, o.g., never hinged, Very Fine.
Scott \$15 as hinged. Estimate \$30 - 40



- 66 ✉ **German Offices in Palestine, 1912, registered cover from Jaffa to Germany**, an attractive cover from the period of Turkish rule over Palestine, Fine to Very Fine. Estimate \$50 - 75



- 70 ○ **Germany: Berlin, 1949, Currency Victims complete (Scott 9NB1-9NB3)**, neat light c.d.s.'s, Very Fine.
Scott \$410. Michel 68-70. Estimate \$150 - 200



- 71 ★★ **Germany: Allied Occupation - Bizone, 1948, Buildings Issue, 80 pf red violet, perf 14 (Scott 655a), o.g., never hinged, Fine to Very Fine.**
Scott \$45 as hinged. Estimate \$50 - 75



- 72 ★★ **Germany: Federal Republic, 1949, Stamp Centenary and Welfare complete (Scott B309-B313), o.g., never hinged, Fine to Very Fine.**
Scott \$96. Michel 113, 117-120; €147 (\$160).
Estimate \$30 - 40



- 73 ★★ **Germany: Federal Republic, 1953, Welfare complete (Scott B334-B337), o.g., never hinged, Very Fine to Extremely Fine.**
Scott \$75. Michel 173-176; €85 (\$90).
Estimate \$25 - 35



Ex 74

- 74 ★★田 **Germany: Federal Republic, 1953, Welfare complete (Scott B334-B337), top blocks of 6, o.g., never hinged, Very Fine.**
Scott \$450. Michel 173-176; €510 (\$550).
Estimate \$100 - 150



- 75 ★★ **Italy, 1910, Garibaldi complete (Scott 115-116), a lovely fresh set, o.g., never hinged, Fine to Very Fine.**
Scott \$315 as n.h. Sassone 87-90.
Estimate \$150 - 200



- 76 ★ **Italy, 1889, Humbert I, 45c gray green (Scott 54), o.g., hinged, Fine to Very Fine centering, a very scarce stamp.**
Scott \$2,350. Sassone 46a. Estimate \$500 - 750



Ex 77

- 77 ★★ **Italy, 1922, Mazzini complete (Scott 140-142)**, 4 sets, o.g., never hinged, Fine. Scott \$580. Sassone 128-130. Estimate \$100 - 150



Ex 78

- 78 ★ **Italy, 1935, Bellini regular issues complete (Scott 349-354)**, o.g., lightly hinged. Scott \$204. Estimate \$75 - 100



- 79 ★★ **Italy, 1949, European Recovery Program complete (Scott 515-517)**, o.g., never hinged. Scott \$80. Estimate \$35 - 50



- 80 ★★ **Italy, 1949, 100L Roman Republic (Scott 518a)**, o.g., never hinged, Very Fine. Scott \$225. Estimate \$100 - 150



- 81 ★★ **Italy, 1950, 55L Holy Year high value (Scott 536)**, o.g., never hinged. Scott \$28 as hinged. Estimate \$35 - 50



- 82 ★ **Italy, 1950, Radio Conference complete (Scott 538-539)**, o.g., very lightly hinged, Very Fine. Scott \$79. Estimate \$40 - 60



- 85 ★ **Italian Colonies: Libya, 1926, 60c deep blue and 2L carmine, each perf 11 (Scott 41a, 43a)**, o.g., lightly hinged, Fine to Very Fine. Scott \$48. Estimate \$30 - 40



- 83 ★★ **Italy, 1950, Occupational definitive issue complete (Scott 549-567)**, o.g., never hinged, Fine to Very Fine. Scott \$190. Estimate \$75 - 100



- 86 ★ **Italian Colonies: Somalia, 1916, Arms of Italy surcharged, 20c on 5c slate (Scott B4)**, a lovely corner margin single, o.g., hinge remnant, Fine. Scott \$60. Estimate \$30 - 40



Ex 84

- 84 ○ **Italy, Airmail, 1934, Soccer complete (Scott C62-C65)**, Very Fine. Scott \$1,193. Sassone S.1513 (A95-99); €1,500 (\$1,620). Estimate \$250 - 350



- 87 ★★ **Liechtenstein, Airmail, 1930, Airplanes over Landscapes, 15rp-1fr complete (Scott C1-C6)**, o.g., never hinged, Fine to Very Fine. Scott \$518. Michel 108-113. Zumstein 1-6. Estimate \$100 - 150



- 88 ★★ **Lithuania**, Airmail, 1921, 1auk Plane over Neman River, imperf (Scott C5a), pair, o.g., never hinged, Very Fine. Scott \$90 as hinged. Estimate \$75 - 100



- 92 ★★ **Scandinavia: Denmark**, 1912, Crown & Numeral, 35öre on 20öre rose & gray (Scott 80), marvelous centering and fresh color, o.g., never hinged, Very Fine and choice. Scott \$60. Michel 61. Facit 48. Estimate \$35 - 50



Ex 89

- 89 ★★ **Luxembourg**, 1951, United Europe complete (Scott 272-277), o.g., never hinged, Very Fine. Scott \$175. Michel 478-483. Estimate \$75 - 100



- 93 ★★ **Scandinavia: Denmark**, 1925, 2kr gray & claret (Scott 129), o.g., never hinged, Very Fine. Scott \$140. Michel 150. Facit 162. Estimate \$75 - 100



- 90 ○ **Netherlands**, 1872, King William III, 2g50c rose & ultramarine (Scott 33), lightly canceled, Very Fine. Scott \$105. Michel 29. NVPH 29. Estimate \$40 - 60



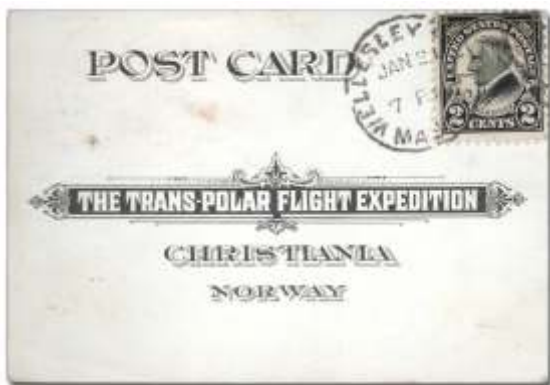
- 94 (★) **Scandinavia: Finland**, 1866, Arms, 5p red brown on lilac, roulette III (Scott 12), lovely "full teeth", unused without gum, Very Fine for this issue. Scott \$290 as o.g. Estimate \$100 - 150



- 91 ★★ **San Marino**, 1947, Vox Populi complete (Scott 272-276), o.g., never hinged, Fine to Very Fine. Scott \$125. Estimate \$60 - 80




- 95 ✉ **Scandinavia: Norway/U.S.**, 1924, Noble Trans-Polar Flight, Very Fine. Estimate \$30 - 40




- 96  **Scandinavia: Norway/U.S., 1925, Noble Trans-Polar Flight, Very Fine.**
Estimate \$30 - 40




- 97  **Switzerland, Zürich, 1846, 6rp black, horizontal underprint (Scott 1L4),** margins almost all around, neat red rosette cancel, Very Fine for this issue.
Scott \$1,775. Michel 2 II. Zumstein 2W; 2,100 SFr (\$2,080). Estimate \$350 - 500



- 98  **Switzerland, 1852, Rayon III, 15rp vermilion, small numerals (Scott 11),** lovely 4 margined example nicely cancelled by a federal grill, quite attractive and without faults, Very Fine to Extremely Fine; with 2006 Eichele certificate.
Scott \$775. Michel 10. Zumstein 18; 800 SFr (\$790). Estimate \$200 - 300



- 99  **Switzerland, 1854-55, Sitting Helvetia ("Strubel"), 5rp pale yellow brown, emerald silk threads, Bern printing (Scott 20),** lovely centering and margins; corner and vertical creases, otherwise Fine to Very Fine.
Scott \$70. Michel 13 II A ym. Zumstein 22B. Estimate \$25 - 35



- 100  **Switzerland, 1867-78, Sitting Helvetia, 30c on 90c ultramarine (Scott 56),** fresh, o.g., hinged, Fine to Very Fine.
Scott \$620. Michel 33 a. Zumstein 41. Estimate \$150 - 200



- 101  **Switzerland, 1908, Helvetia with Sword, 3fr bister & yellow (Scott 145),** o.g., lightly hinged, Very Fine.
Scott \$465. Michel 110x. Zumstein 116. Estimate \$200 - 300



- 102  **Switzerland, 1908, Helvetia with Sword, 3fr bister & yellow (Scott 145),** o.g., hinged, Very Fine.
Scott \$465. Michel 110x. Zumstein 116. Estimate \$100 - 150



- 103 ★★ **Switzerland, 1930, Jungfrau, 10fr gray green (Scott 185)**, a beautiful corner margin single, o.g., never hinged, Very Fine and choice. Scott \$625. Michel 228. Zumstein 179.
Estimate \$300 - 400



- 104 ★ **Switzerland, 1945, 10fr PAX (Scott 305)**, o.g., very lightly hinged, Very Fine. Scott \$140. Michel 459. Zumstein 274.
Estimate \$40 - 60



- 105 ★★ **Switzerland, 1941, Pro Juventute souvenir sheet (Scott B116)**, o.g., never hinged. Scott \$95. Michel Block 6. Zumstein 981+991.
Estimate \$50 - 75



- 106 ★★ **Switzerland, 1943, Zürich Stamp Centenary souvenir sheet (Scott B131)**, o.g., never hinged, Very Fine. Scott \$70. Michel Block 8. Zumstein 14.
Estimate \$35 - 50



Ex 107

- 107 ○ **Switzerland, Airmail, 1923-25, 15c-1fr Definitive Issue complete (Scott C3-C12)**, neat c.d.s.'s, Very Fine. Scott \$199. Michel 179-184x etc. Zumstein 3-12; 460 SFr (\$460).
Estimate \$50 - 75



Ex 108

- 108 ○ **Switzerland, Airmail, 1933-37, 20c-1fr Definitive Issue complete, grilled gum (Scott C4a-C12a)**, neat c.d.s.'s, Very Fine. Scott \$291. Michel 180z-184z etc. Zumstein 4z-12z; 400 SFr (\$400).
Estimate \$75 - 100

- 109 ★/○ **Switzerland, 1907-80's, used collection / accumulation**, mainly issues 1907 to 1930's. Highlights include #126 and also #136, 138, 166, 185, 219-225 and ends with 725...a lovely collection with many set and singles in between. Some duplication, many useful stamps, generally Very Fine. Estimate \$350 - 500



110

- 110 ★★ **Yugoslavia, Airmail, 1949, Railroad Centenary souvenir sheet (Scott C33)**, o.g., never hinged, Very Fine. Scott \$175. Estimate \$75 - 100



111

- 111 ★★ **Yugoslavia, Airmail, 1949, Railroad Centenary souvenir sheet, imperf (Scott C33a)**, o.g., never hinged, Very Fine. Scott \$175. Estimate \$75 - 100

Asia and Latin America



Ex 112

- 112 ★★ **Congo (Democratic Republic), 1970, Mushrooms set complete (Scott 208-213)**, a lovely and surprisingly scarce issue of topical appeal, o.g., never hinged, Very Fine, a delicious set that is almost good enough to eat (the mushrooms that is - our preference for dining is the 10fr). Scott \$154. Estimate \$75 - 100



- 113 ★★ **Israel, Airmail, 1953, 1000p Tel Aviv (Scott C16)**, tab single, o.g., never hinged; minute perf thin at left, otherwise Fine to Very Fine. Scott \$85. Bale 79. Estimate \$35 - 50



- 114 (★) **Japan, 1871, Dragon, 48m brown, plate 1, wove paper (Scott 1b)**, position 28, large margins all around, beautifully fresh, without gum as issued, an Extremely Fine gem. Scott \$300. J.S.C.A. 1b; 50,000 yen (\$450). Estimate \$250 - 350



- 115 (★) **Japan, 1871, Dragon, 48m brown, plate 2, laid paper (Scott 1c)**, position 30, fresh, with large margins, without gum as issued, Very Fine, ex Robert Simon.
Scott \$325. J.S.C.A. 1d; 50,000 yen (\$450).
Estimate \$200 - 300



- 118 (★) **Japan, 1871, Dragon, 200m vermilion, plate 2, laid paper (Scott 3b)**, position 38, large even margins, without gum as issued, Very Fine, a lovely example of a scarce stamp.
Scott \$2,500. J.S.C.A. 3f; 350,000 yen (\$3,150).
Estimate \$750 - 1,000



- 116 (★) **Japan, 1871, Dragon, 100m blue, plate 1, laid paper (Scott 2)**, position 12, large even margins and bright fresh color, a beautiful stamp, without gum as issued, Extremely Fine and choice.
Scott \$225. J.S.C.A. 2a; 43,000 yen (\$390).
Estimate \$200 - 300



- 119 ★田 **Japan, 1950, 5th National Athletic Meet (Scott 508b)**, se-tenant block of 4, o.g., top 2 l.h., bottom two n.h.; light crease on the right two stamps, otherwise Fine to Very Fine.
Scott \$190 as n.h. J.S.C.A. C194-197 var.
Estimate \$30 - 40



- 117 (★) **Japan, 1871, Dragon, 100m blue, plate 1, laid paper (Scott 2)**, position 18, large even margins and excellent color, a choice example, without gum as issued, Very Fine to Extremely Fine.
Scott \$225. J.S.C.A. 2a; 43,000 yen (\$390).
Estimate \$200 - 300




United States

Early Postal History



Ex 122

- 122  **Stampless covers, 1793-1854, interesting group**, 43 in all with some foreign destinations, neat paid markings from Boston, a Philadelphia railroad cancel of note, lovely manuscript cancels as well as a few with Roman numeral cancels; a nice variety of markings and content, perfect for the collector looking for something a bit different, all imaged on our website, Fine to Very Fine. Estimate \$1,000 - 1,500

- 120 ★★ **Laos, 1954, Accession of King Sisavong-Vong complete (Scott 25-26, C13)**, o.g., never hinged, Very Fine. Scott \$175. Estimate \$75 - 100



Ex 123

- 123  **Wells, Fargo & Co. covers**, a lovely group of ten different covers all traveling throughout California; each imaged on the website, Fine to Very Fine. Estimate \$400 - 600



- 121 ★★ **Mexico, Airmail, 1932, Coat of Arms surcharged, 30c on 20c brown olive (Scott C46)**, o.g., never hinged, Very Fine. Scott \$75. Estimate \$40 - 60



- 124** ✉ **[California] Los Angeles, 3¢ rose** tied by 34 mm MAY 24 c.d.s. to Philadelphia, PA; the second type of c.d.s. from Los Angeles with period of use from 28 Sept 1856 to 9 Sept 1864; the 3¢ first class letter rate went into effect July 1, 1863, indicating this cover was mailed on May 25, 1864; roughly opened at right, Fine overall, *rarity rating "4" - very scarce*. Scott 65. Estimate \$100 - 150

See Williams, John H. "California Town Postmarks 1849-1935" Vol I; the population of Los Angeles in the 1870 Census was only 5,278!



- 127** ✉ **1893 Columbian Exposition, a** scarce and seldom seen 1892 Goldsmith postal card wrapper (UPSS EX24Wa, rarity "c" - not the more common 1893 design), an important and very scarce item for the Columbian postal card specialist; front and back halves completely separated, significant chipping at the edge and other edge faults including tears, etc, Very Good to Fine, most of the handful that still exist are generally in very poor condition. Estimate \$200 - 300




- 125** ✉ **[Indian] Ga-wan-ka Indian, with** sound Fine-Very Fine #496 line pair and 492 (x2 singles, originally forming a line pair but separated prior to adhesion), tied to oversized illustrated advertising cover (9.5 x 6.25 in.); neat illustration of "indian warrior" inside of arrowhead; some staining and edge faults, Fine, a #496 line pair on cover usage is **VERY SCARCE!**. Estimate \$75 - 100




- 128** ✉ **1893 Columbian Exposition, postal** card (UPSS EX53), Goldsmith set 6 (12 designs), Agricultural Building, with address incorrectly written on the message side and message on the address side. Straight line auxiliary marking "UNMAILABLE" in violet on reverse along with a fair-related message..."and at night the illuminations completely turn my head", Fine to Very Fine, a nice example of this auxiliary marking. Estimate \$40 - 60

- 126** ✉ **Advertising covers, 1896-1914,** neat small group, 6 in total featuring photography, expositions, tourism and jewelry, Fine to Very Fine. Estimate \$75 - 103




- 129**  **1895 Cotton States Exposition**, Hotel Aragon, Atlanta, GA to Hamilton (Ontario) Canada, address side with a #231 tied by Atlanta, GA May 28, 1894 duplex marking and due 2 handstamp; reverse all over "Cotton States and International Exposition with Hamilton ONT receiving postmark, an attractive and displayable example, quite unusual to a foreign destination; edge faults and reduced at right, Fine overall.
Estimate \$75 - 100




- 131**  **Maine**, a very scarce unlisted design showing the arms of Maine (somewhat similar to Weiss ST-466) and "Executive Department" on an 1862 Augusta, Me. cover to Bangor, Very Fine. Scott 65. Estimate \$100 - 150

Civil War Covers including Patriotics




- 132**  **Lady Liberty, Flag and "The War For The Union"**, on a lovely 1861 cover from Logansport, Ind. to Philadelphia, Very Fine. Scott 65. Walcott 2216. Weiss F-F-164. Estimate \$100 - 150




- 130**  **Indiana**, an unlisted design that is very similar to Walcott 1706 and Weiss ST-391 (the Arms-Soldier-Tent series), but with a slightly different design and color, on an 1862 cover from Louisville, Ky. to Indiana, Fine. Scott 65. Estimate \$100 - 150



- 133**  **Eagle and Shield**, interesting design by Richards on a cover from Elizabethtown, NY to upstate NY, Fine. Scott 65. Walcott 2487. Weiss E-R-112. Estimate \$100 - 150




- 134  **Flags and Constitution**, on an 1862 stampless cover marked "Paid 3", from Derby Church, Pa. to Philadelphia, Fine to Very Fine. Walcott 2801. Weiss F-T-70. Estimate \$100 - 150




- 135  **[Sanitary Fair] Great Central Fair for the Sanitary Commission**, a handsome example on an 1866 Philadelphia drop cover - an uncommon usage, Fine. Estimate \$250 - 350

Fancy Cancels




- 136  **Honeycomb (Birdsborough, PA)**, a superb fancy cancel strike ties a fresh looking 2¢ Banknote to this intra-state cover which also has a neatly struck c.d.s.; a gorgeous cover that looks like it was mailed yesterday rather than nearly 150 years ago, Very Fine. Scott 210. Estimate \$150 - 200



- 137  **Prison Bars (Columbus, OH)**, a lovely strike on cover to Iowa, Very Fine. Scott 65. Estimate \$75 - 100



- 138  **Rosette 7 segments (Waterbury, CT)**, ties a 3¢ Banknote on a lovely all over Hall Brothers advertising cover, Very Fine, a beautiful strike and cover, *Rohloff rarity RR*. Scott 147. Rohloff P-19. Estimate \$150 - 200



- 139 ▲ **Cuban Flag fancy cancel**, neat strike ties a 1903, 5¢ blue (304) on piece, tied on piece by, Very Fine. Scott 304.
Estimate \$75 - 100



- 142 ○ **Stars**, a lovely group of 9 different fancy star cancels, of note the Chicopee, MA ST-6P 23, perfect for the cancel specialist; a few faults, otherwise Fine to Very Fine.
Estimate \$200 - 300



- 140 ○ **Shield (Oriskany, NY)**, handsome and scarce, nearly full strike of a fancy shield with stars at top, Extremely Fine. Scott 65.
Estimate \$100 - 150



Ex 143



- 141 ○ **Pitchfork (Unadilla Forks NY)**, lovely, scarce full strike (second state), Very Fine strike. Scott 65. Skinner-Eno PO-Wt 21a.
Estimate \$200 - 300

- 143 ✉ **Fancy cancels, interesting small group**, 16 postal cards and 13 covers all with beautiful strikes of fancy cancels including letters, leaves, stars, targets, grids, bars, a Celtic cross and geometrics; a treasure trove for the collector of fancy cancels, Very Fine to Extremely Fine.
Estimate \$300 - 400

1845 - 1869 Issues



- 144 ○ New York, N.Y., 1845, 5¢ black on bluish (Scott 9X1), position 16, a lovely 4 margined (close at lower right) example, intense color and impression, red NY c.d.s. with "5", Very Fine.
Scott \$600. Estimate \$350 - 500



- 145 ○ New York, N.Y., 1845, 5¢ black on bluish (Scott 9X1), sharp detailed impression, blue manuscript penstroke cancellation; small thin spot, otherwise Fine.
Scott \$475. Estimate \$200 - 300



- 146 ○ New York, N.Y., 1845, 5¢ black on bluish (Scott 9X1), good color, pen cancels, Very Good.
Scott \$475. Estimate \$120 - 150



- 147 ○ 1847, 5¢ red brown and 10¢ black (Scott 1-2), 1 with four full margins, on piece, 2 with three margins, cutting in at top; small faults, Very Good to Fine.
Scott \$1,125. Estimate \$350 - 500



- 148 ✉ 1847, 5¢ red brown (Scott 1), well centered within huge margins including parts of the next stamp at top, tied by Boston red grid cancel on a very clean and attractive 1850 folded letter to Newport, R.I., Very Fine to Extremely Fine.
Scott \$425. Estimate \$400 - 600



- 149 ✉ 1859, 10¢ green, type V (Scott 35), used on a cross-border cover to **Canada**, tied by a beautifully struck c.d.s from Otter River, MA, carried by coastal steamer from Boston (red U. States oval) to Nova Scotia (left corner handstamp); then traveled by Canadian post to Lennoxville (Quebec) reverse handstamp, and then on to Huntingville; a great cover with lovely markings, Very Fine.
Estimate \$150 - 200



- 150** ○ **1851, 1¢ blue, type II (Scott 7)**, margins almost all around (barely in at top but type characteristics show clearly), deep rich color, light town cancels, Fine to Very Fine.
Scott \$130. Estimate \$75 - 100



- 151** ○ **1852, 1¢ blue, type IV (Scott 9)**, position 41L1L, large margins all around - well clear of design, fresh color, unusually choice, lightly canceled, Extremely Fine.
Scott \$90. Estimate \$100 - 150



- 152** ○ **1852, 1¢ blue, type IV (Scott 9)**, margins almost all around (just barely touching at top but type characteristics show clearly), neat blue town cancel, Fine to Very Fine.
Scott \$95. Estimate \$60 - 80



- 153** ✉ **1857, 3¢ rose, type I (Scott 25)**, tied by blue LODI, NY, JUNE 6 c.d.s. on a lovely embossed ladies cover; back flap is missing, Fine to Very Fine.
Scott \$190. Estimate \$40 - 60



- 154** ★ **1857, 3¢ dull red, type III (Scott 26)**, well centered, tied by a beautifully struck blue Connecticut town cancel on an attractive cover to Rhode Island, premium quality, Very Fine.
Estimate \$30 - 40



- 155** ○ **1857, 3¢ brownish carmine, type III (Scott 26)**, horizontal pair, well centered, a lovely lot for the specialist, New York 1861 year-date with month, date & year in one line - a rare postmark, Extremely Fine and choice.
Scott \$42 as singles. Estimate \$50 - 75



- 156** ★ **1861, 10¢ dark green (Scott 68a)**, gorgeous centering and color, slightly disturbed o.g., Very Fine to Extremely Fine. Scott \$1,350. Estimate \$750 - 1,000



- 157** ☒ **1861, 10¢ yellow green (Scott 68)**, tied by a well struck 19mm 11 bar grill postmark paying the 10¢ rate from the West Coast to the East Coast in the year 1863; as indicated by manuscript "Via Panama" this cover traveled the Panama Route - up until 1860 this route offered the fastest method of mail travel coast to coast in the United States; a very fresh cover, Very Fine. Estimate \$100 - 150



- 158** ○ **1861, 12¢ black (Scott 69)**, fresh and well centered, light target cancel, Very Fine. Scott \$95. Estimate \$60 - 80



- 159** ☒ **1863, 2¢ black (Scott 73)**, lovely little group of 3 covers featuring the "Black Jack" stamp all with neat cancels, Fine to Very Fine. Estimate \$100 - 150



- 160** ▲ **1862, 5¢ red brown (Scott 75)**, well centered, tied on piece by socked-on-the-nose blue Baltimore cancel, Very Fine; with 2019 A.P.S. certificate. Scott \$425. Estimate \$300 - 400



- 161** ○ **1867, 3¢ rose, D. grill (Scott 85)**, nicely centered, fresh color, black cork cancel; short corner perf at bottom left, otherwise Fine to Very Fine; with 2008 P.S.E. certificate. Scott \$1,000. Estimate \$150 - 200



- 162 ○ 1869, 1¢ buff, 2¢ brown and 3¢ ultramarine (Scott 112-114), each well centered, neatly canceled and with fresh color, a handsome trio, Very Fine. Scott \$226. Estimate \$150 - 200



- 166 ○ 1869, 15¢ brown & blue, type I (Scott 118), large margins and good color, fairly light cancel; tiny trivial corner perf crease, otherwise Fine to Very Fine. Scott \$800. Estimate \$250 - 350



- 163 ★★ 1869, 2¢ brown (Scott 113), post office fresh with eye popping color and detailed impression; a true gem which is rare never hinged, o.g., never hinged, nearly Very Fine, not priced never hinged in Scott! Scott \$500 as hinged. Estimate \$300 - 400



- 167 ○ 1869, 15¢ brown & blue, type II, drastic vignette shift (Scott 119 var); reperforated at bottom, Very Good. Scott \$200. Estimate \$150 - 200



- 164 ○ 1869, 2¢ brown (Scott 113), nicely centered, lightly canceled, almost Very Fine. Scott \$80. Estimate \$40 - 60



- 168 ○ 1869, 24¢ green & violet (Scott 120), rich fresh color, cork cancel, Fine to Very Fine. Scott \$600. Estimate \$250 - 350



- 165 ★★ 1869, 3¢ ultramarine (Scott 114), bright fresh color, o.g., never hinged, Fine to Very Fine, very scarce never hinged. Scott \$225 as hinged. Estimate \$250 - 350



- 169 P田 1869, 30¢ blue & carmine, plate proof on India (Scott 121P3), block of 4, flawless in every respect, with large even margins, Extremely Fine and choice. Scott \$625. Estimate \$500 - 750

1870 - 1888 Bank Note Co. Issues



170 ○ 1870, 10¢ brown, N.B.N.C. printing (Scott 150), beautifully well centered within large margins and with lovely bright fresh color, very light target cancel, Extremely Fine and choice. Scott \$35. Estimate \$40 - 60



171 ○ 1870, 12¢ dull violet, N.B.N.C. printing (Scott 151), fresh, nicely centered, neat New York Foreign Mail cancel, Very Fine. Scott \$200. Estimate \$150 - 200



172 ○ 1870, 24¢ purple, N.B.N.C. printing (Scott 153), a wonderfully fresh and bright stamp with full margins, bold socked-on-the-nose strike of a rarely seen **New York Foreign Mail cancel**, Very Fine to Extremely Fine, Ex - Kirke, Weiss and Luttenton. Scott \$210 ++. Weiss GE-C-U1. Estimate \$350 - 500

Weiss classifies this as very rare and notes that "...no example of this rare cancel has ever been seen or reported on cover or even on a piece of cover".



173 ★★ 1873, 2¢ brown, C.B.N.C. printing (Scott 157), rich intense color on brilliant white paper, o.g., never hinged (rare thus!), Fine. Scott \$325 as hinged. Estimate \$200 - 300



174 P田 1873, 3¢ green, C.B.N.C. printing, plate proof on card (Scott 158P4), corner margin block of 4, huge margins and excellent color, Extremely Fine to Superb. Scott \$600. Estimate \$350 - 500



175 ★★ 1873, 3¢ green, C.B.N.C. printing (Scott 158), attractive fresh color, o.g., never hinged (!), Fine to Very Fine; with photocopy of 2018 P.F. certificate for block. Scott \$110 as hinged. Estimate \$120 - 150



- 176 ○ **1873, 6¢ dull pink, C.B.N.C. printing (Scott 159)**, beautifully well centered, a gem example, "Mummers" fancy cancel, Very Fine to Extremely Fine. Estimate \$50 - 75



- 179 ○ **1879, 3¢ green, A.B.N.C. printing (Scott 184)**, large perfectly balanced margins all around, an outstanding used example, very rare this choice, black target cancel, Extremely Fine to Superb; with 2005 P.S.E. certificate graded XF-SUP 95. SMQ \$125. Estimate \$100 - 150



- 177 ○ **1873, 10¢ brown, C.B.N.C. printing (Scott 161)**, wonderfully well centered within oversized margins, light cancel (probably New York Foreign Mail); a light corner crease at top right, otherwise Very Fine, a lovely jumbo; with 2016 P.S.E. certificate graded VF 80J. Scott \$25. Estimate \$20 - 30



- 180 ★★ **1887, 3¢ vermilion (Scott 214)**, excellent color, o.g., never hinged, Fine to Very Fine; with photocopy of 2018 P.F. certificate for block. Scott \$180. Estimate \$60 - 80



- 178 ✉ **1875, 5¢ blue, C.B.N.C. printing (Scott 179)**, tied by gorgeous geometric cancel on an Oct 15, 1876 cover to **France**, with red NEW YORK OCT 15 Exchange Office datestamp (Winter unlisted/Weiss 1); blue French entry postmark "PAQ FR BREST 2d 65/26 OCT'76, at top manuscript 'pr Amerique' (French Line), on the rear receiving postmark 'Lyon 27 OCT 76 (68); NYFM TR-S5; Weiss reports usage from 14/10/1876 to 7/12/1876 making this a second day usage! certificate notes part of address's name removed, Fine to Very Fine overall, *only 22 exist*, ex-Kirke; with 2003 P.F. certificate. Estimate \$100 - 150



- 181 ★ **1888, 4¢ carmine (Scott 215)**, excellent color, large part o.g., Fine to Very Fine. Scott \$180. Estimate \$50 - 75

1890 - 1898 Issues



- 182** ★★ **1890, 2¢ carmine, cap on left “2” variety (Scott 220a)**, bright fresh color, o.g., never hinged, Fine; with photocopy of 2019 P.F. certificate for block.
Scott \$425. Estimate \$150 - 200



- 183** ★★ **1893, 8¢ lilac (Scott 225)**, fresh and nicely centered, o.g., never hinged, almost Very Fine.
Scott \$135. Estimate \$75 - 100



- 184** ★ **1893, 1¢ Columbian (Scott 230)**, a gorgeous gem, perfectly centered within large margins, o.g., lightly hinged, Superb.
Scott \$14. Estimate \$30 - 40



- 185** ★★ **1893, 2¢ Columbian (Scott 231)**, a magnificent gem, perfectly centered within jumbo margins and with brilliant fresh color, o.g., never hinged, Extremely Fine; with 2018 P.S.E. certificate graded XF 90J.
Scott \$31. SMQ \$225. Estimate \$150 - 200



- 186** ★★ **1893, 3¢ Columbian (Scott 232)**, an outstanding gorgeous gem featuring huge margins and near perfect centering, o.g., never hinged, Extremely Fine to Superb.
Scott \$98. Estimate \$150 - 200



- 187** ★★ **1893, 3¢ Columbian (Scott 232)**, bright fresh color, o.g., never hinged, Fine to Very Fine; with photocopy of 2017 P.F. certificate for block.
Scott \$98. Estimate \$40 - 60



- 188** ★ **1893, 4¢ Columbian (Scott 233)**, o.g., lightly hinged, Fine to Very Fine.
Scott \$50. Estimate \$30 - 40



189 ★★/★田 **1893, 4¢ Columbian (Scott 233)**, plate block of 6, fresh and well centered throughout, o.g., 4 stamps never hinged, Very Fine. Scott \$950. Estimate \$600 - 800



190 ★ **1893, 5¢ Columbian (Scott 234)**, outstandingly well centered within large margins, o.g., lightly hinged, Very Fine to Extremely Fine. Scott \$50. Estimate \$40 - 60



191 ★ **1893, 6¢ Columbian (Scott 235)**, fresh and beautifully well centered, o.g., barest trace of hinge, Very Fine. Scott \$50. Estimate \$35 - 50



192 ★★ **1893, 8¢ Columbian (Scott 236)**, an especially handsome example, well centered and very fresh, o.g., never hinged, Very Fine to Extremely Fine. Scott \$140. Estimate \$120 - 150



193 ★★ **1893, 8¢ Columbian (Scott 236)**, a lovely example with bright fresh color, o.g., never hinged, almost Very Fine; with photocopy of 2018 P.F. certificate for block. Scott \$140. Estimate \$60 - 80



194 ★ **1893, 15¢ Columbian (Scott 238)**, lovely centering within jumbo margins and with bright fresh color, o.g., lightly hinged; a faint, barely visible crease, otherwise Very Fine; with 2018 P.S.E. certificate graded VF 80J. Scott \$200. Estimate \$75 - 100



195 ★ **1893, 50¢ Columbian (Scott 240)**, bright fresh color, o.g., very lightly hinged, almost Very Fine; with photocopy of 2014 P.F. certificate for block. Scott \$425. Estimate \$200 - 300



196 P田 1894, 1¢ blue, plate proof on card (Scott 247P4), corner margin block of 4, Extremely Fine. Scott \$450. Estimate \$300 - 400



197 ★★ 1894, 2¢ pink, type I, unwatermarked (Scott 248), bright fresh color, o.g., never hinged, Fine to Very Fine; with photocopy of 2019 P.F. certificate for block. Scott \$90. Estimate \$35 - 50



198 ○ 1894, 2¢ carmine, type I, unwatermarked (Scott 250), mathematically perfect centering and excellent color, very lightly canceled; filled thin, otherwise Superb; with 2014 P.S.E. certificate graded F 70, apparent centering SUP 98. Estimate \$30 - 40



199 ★ 1894, 4¢ dark brown, unwatermarked, dramatic pre-print paper fold (Scott 254 var.), o.g., hinged, Fine, a wonderful error for the Lincoln specialist. Scott \$190. Estimate \$150 - 200



200 ★★ 1894, 4¢ dark brown, unwatermarked, dramatic foldover error (Scott 254 var.), o.g., never hinged; the pre-printing crease that caused the foldover is clearly visible, Fine to Very Fine for this. Scott \$600 as normal. Estimate \$150 - 200



201 ★★ 1894, 5¢ chocolate, unwatermarked (Scott 255), fresh color, o.g., never hinged, Fine to Very Fine. Scott \$360. Estimate \$150 - 200



202 ★★ 1894, 6¢ dull brown, unwatermarked (Scott 256), fresh and well centered, o.g., never hinged (faint corner gum bend), nearly Very Fine.
Scott \$475. Estimate \$250 - 350



203 ○ 1894, 15¢ dark blue, unwatermarked (Scott 259), beautifully well centered and with rich intense color, neat corner cancel, Extremely Fine and choice.
Scott \$65. Estimate \$75 - 100



204 ★★ 1894, 50¢ orange, unwatermarked (Scott 260), fresh bright color, o.g., never hinged (tiny gum skip), almost Very Fine.
Scott \$1,425. Estimate \$600 - 800



205 ★★ 1895, 1¢ blue, D.L. watermark (Scott 264), gorgeous centering and color, o.g., never hinged, Extremely Fine and choice; with photocopy of 2019 P.F. certificate for block.
Scott \$18. Estimate \$30 - 40



206 ★★ 1895, 5¢ chocolate, D.L. watermark (Scott 270), plate number and imprint strip of 3, a lovely fresh strip, o.g., never hinged, Fine to Very Fine; with 2019 P.F. certificate.
Scott \$375. Estimate \$150 - 200



207 ★★ 1895, 10¢ dark green, D.L. watermark (Scott 273), rich fresh color and very attractively centered, o.g., never hinged, Very Fine.
Scott \$280. Estimate \$200 - 300



208 ○ 1895, 15¢ dark blue, D.L. watermark (Scott 274), magnificent centering, fairly light cancel; small tear at top, otherwise Superb; with 2015 P.S.E. certificate graded F-VF 75, apparent centering SUP 98.
Scott \$18. Estimate \$20 - 30



- 209 ★★ 1898, 5¢ dark blue (Scott 281), plate number single, extraordinarily well centered, a gem, o.g., never hinged, Extremely Fine. Scott \$100. Estimate \$100 - 150



- 210 ★★ 1898, 1¢ Trans-Miss. (Scott 285), vertical pair, fresh and well centered, o.g., never hinged; natural s.e. at right, Very Fine. Scott \$140. Estimate \$60 - 80



- 211 ★★ 1898, 10¢ Trans-Miss. (Scott 290), a fresh attractive example, o.g., never hinged, Fine to Very Fine. Scott \$425. Estimate \$200 - 300

1901 - 1907 Issues



- 212 ★★ 1901, 2¢ Pan-American (Scott 295), a beautiful plate number single, fresh and uncommonly well centered, o.g., never hinged, Very Fine to Extremely Fine. Scott \$38. Estimate \$50 - 75



- 213 ★ 1901, 2¢ Pan-American (Scott 295), shifted vignette variety, fresh and well centered, o.g., hinged, Extremely Fine. Scott \$15. Estimate \$30 - 40



- 214 ★★ 1901, 4¢ Pan-American (Scott 296), fresh, o.g., never hinged, Fine to Very Fine. Scott \$170. Estimate \$100 - 150



- 215 ★★ 1901, 4¢ Pan-American (Scott 296), fresh, o.g., never hinged, Fine to Very Fine. Scott \$170. Estimate \$75 - 100



216 ★ **1901, 4¢ Pan-American (Scott 296)**, fresh and well centered, o.g., very lightly hinged, Very Fine.
Scott \$70. Estimate \$40 - 60



220 ★★ **1901, 10¢ Pan-American (Scott 299)**, a bright fresh example with attractive centering, o.g., never hinged, almost Very Fine.
Scott \$300. Estimate \$150 - 200



217 ★★ **1901, 5¢ Pan-American (Scott 297)**, a beautiful example featuring near perfect centering and bright fresh color, o.g., never hinged, Very Fine to Extremely Fine; with photocopy of 2016 P.F. certificate for block.
Scott \$180. Estimate \$120 - 150



Ex 221

221 ★ **1902-03, 1¢ to 50¢ values (Scott 300-310)**, a lovely partial set, o.g., hinged (a few lightly hinged); small faults, Fine to Very Fine appearance.
Scott \$987. Estimate \$400 - 600



218 ○ **1901, 8¢ Pan-American (Scott 298)**, deep color and impression and nicely centered amid large margins, very lightly canceled, Very Fine to Extremely Fine.
Scott \$50. Estimate \$30 - 40



222 ★★ **1903, 4¢ brown (Scott 303)**, a flawless beauty, o.g., never hinged, Very Fine to Extremely Fine.
Scott \$140. Estimate \$100 - 150



219 ★★ **1901, 10¢ Pan-American (Scott 299)**, an impressive premium example, uncommonly well centered and with bright fresh color, o.g., never hinged, Very Fine; with 2017 P.F. certificate graded VF 80.
Scott \$300. SMQ \$350. Estimate \$250 - 350



223 ★★ **1903, 5¢ blue (Scott 304)**, fresh and handsome, o.g., never hinged, almost Very Fine.
Scott \$150. Estimate \$75 - 100



- 224 ★ 1903, 6¢ claret (Scott 305), spectacularly well centered within oversized margins, a gem! o.g., hinged, Extremely Fine to Superb. Scott \$60. Estimate \$75 - 100



- 228 ★ 1903, \$1 black (Scott 311), fresh and attractive with big margins, o.g., hinged; small thins and a pulled perf at top, Fine to Very Fine appearance. Scott \$600. Estimate \$300 - 400



- 225 ★★田 1903, 10¢ pale red brown (Scott 307), block of 4, fresh, nicely centered, o.g., never hinged, almost Very Fine. Scott \$600. Estimate \$200 - 300



- 229 ○ 1903, \$2 dark blue (Scott 312), fresh and well centered, very lightly canceled, Very Fine to Extremely Fine. Scott \$190. Estimate \$150 - 200



- 226 ○ 1903, 10¢ pale red brown, vertically ribbed paper (Scott 307 var.), an unlisted Scott variety, blue and black light cancels, Very Fine. Estimate \$100 - 150



- 230 ★★ 1906, 1¢ blue green, imperf (Scott 314), pair, large even margins, o.g., never hinged, Extremely Fine. Scott \$60. Estimate \$40 - 60



- 227 ★ 1903, 50¢ orange (Scott 310), bright fresh color, o.g., hinged, Fine to Very Fine. Scott \$400. Estimate \$150 - 200



- 231 ★★ 1903, 2¢ carmine, type I (Scott 319), mathematically perfect centering, great color, o.g., never hinged, Superb. Scott \$15. Estimate \$75 - 100



232 ★★田 **1906, 2¢ carmine, type I, imperf (Scott 320)**, corner margin block of 6, with parts of 6 other stamps, o.g., never hinged (minor gum bends), Superb.
Scott \$210 as 3 NH pairs. Estimate \$200 - 300

234 ★★ **1904, 1¢ to 3¢ Louisiana Purchase (Scott 323-325)**, a fresh and well centered group, o.g., never hinged, Very Fine.
Scott \$290. Estimate \$150 - 200

235 ★★ **1904, 1¢ Louisiana Purchase (Scott 323)**, fresh and well centered, o.g., never hinged, Very Fine; with 2019 P.F. certificate for block.
Scott \$60. Estimate \$30 - 40



233 ○ **1906, 2¢ carmine, type I, imperf (Scott 320)**, pair, rich color, well centered within large margins, neat cancel, Extremely Fine.
Scott \$43. Estimate \$40 - 60



- 236 ★★田 1904, 1¢ Louisiana Purchase (Scott 323), plate block of 4, a lovely fresh plate block, o.g., never hinged, Fine to Very Fine. Scott \$325. Estimate \$150 - 200



- 239 ○ 1904, 5¢ Louisiana Purchase (Scott 326), gorgeous centering, faint cancel, Extremely Fine. Scott \$23. Estimate \$40 - 60



- 240 ★★ 1907, 1¢ Jamestown (Scott 328), exceptionally well centered for this very difficult issue, o.g., never hinged, Very Fine, a premium example; with photocopy of 2018 P.F. certificate. Scott \$70. Estimate \$50 - 75



- 237 ★★ 1904, 3¢ Louisiana Purchase (Scott 325), well centered, very bright and fresh, o.g., never hinged, Very Fine. Scott \$170. Estimate \$120 - 150



- 241 ★★田 1907, 2¢ Jamestown (Scott 329), plate block of 6, unusually well centered for this tight margined issue, o.g., never hinged, Very Fine and choice. Scott \$900. Estimate \$400 - 600



- 238 ★★ 1904, 3¢ Louisiana Purchase (Scott 325), attractive, o.g., never hinged, almost Very Fine. Scott \$170. Estimate \$75 - 100



- 242 ★★ 1907, 5¢ Jamestown (Scott 330), well centered for this issue, o.g., never hinged, almost Very Fine. Scott \$350. Estimate \$120 - 150

1908 - 1913 Washington-Franklin and Commemorative Issues



243 ★★ 1908, 1¢ green, D.L. watermark (Scott 331), imprint pair, well centered within uncommonly large margins, o.g., never hinged, Very Fine.
Scott \$32+. Estimate \$30 - 40



244 ★ 1908, 3¢ deep violet, D.L. watermark (Scott 333), superlative centering and brilliant fresh color, a real beauty, o.g., lightly hinged, Extremely Fine and choice.
Scott \$28. Estimate \$50 - 75



245 ★★/★田 1908, 4¢ orange brown, D.L. watermark (Scott 334), plate block of 6, well centered throughout, a beautiful plate block, o.g., lightly hinged at top, never hinged at bottom, Very Fine to Extremely Fine.
Scott \$450. Estimate \$400 - 600



246 ★★/★田 1909, 6¢ red orange, D.L. watermark (Scott 336), plate block of 6, fresh bright color, o.g., 2 center stamps hinged, other 4 never hinged, Fine to Very Fine.
Scott \$750. Estimate \$350 - 500



247 ★★ 1909, 13¢ blue green, D.L. watermark (Scott 339), beautifully well centered with lovely fresh color, o.g., never hinged, Very Fine.
Scott \$90. Estimate \$75 - 100



248 ★★ 1909, 15¢ pale ultramarine, D.L. watermark (Scott 340), part imprint single, a beautiful well centered example, o.g., never hinged (cert mentions "previously hinged" but we cannot see any hinging except perhaps in the selvage), Very Fine; with photocopy of 2019 P.F. certificate for block.
Scott \$150. Estimate \$75 - 100



249 ★ 1909, 15¢ pale ultramarine, D.L. watermark (Scott 340), plate number single, attractive fresh color, o.g., lightly hinged, Fine to Very Fine; with photocopy of 2019 P.F. certificate for block.
Scott \$65. Estimate \$30 - 40



250 ★★田 1908, 2¢ carmine, D.L. watermark, imperf (Scott 344), plate block of 6, perfect in every respect, o.g., never hinged, Extremely Fine to Superb.
Scott \$120. Estimate \$200 - 300



251 ○ 1909, 5¢ blue, D.L. watermark, imperf (Scott 347), perfectly centered wide margins large margins, lightly canceled, Extremely Fine and choice.
Scott \$33. Estimate \$50 - 75



252 ★★ 1909, 2¢ carmine, D.L. watermark, horizontal coil (Scott 353), line pair, attractive fresh color, o.g., never hinged; the right stamp with a light natural vertical crease at the right edge, Fine to Very Fine overall; with 2018 P.F. certificate.
Scott \$1,750. Estimate \$600 - 800



253 ★★ 1909, 5¢ blue, D.L. watermark, horizontal coil (Scott 355), bright fresh color, o.g., never hinged, Fine; with photocopy of 2019 P.F. certificate for block.
Scott \$450. Estimate \$100 - 150



254 ★★ 1909, 2¢ carmine, bluish paper (Scott 358), excellent centering and color, o.g., never hinged, Very Fine.
Scott \$170. Estimate \$50 - 75



255 ★★ 1909, 2¢ Lincoln, imperf (Scott 368), pair, large even margins, immaculate, o.g., never hinged, Extremely Fine and choice.
Scott \$58. Estimate \$60 - 80



- 256 ★★ 1909, 2¢ Lincoln, imperf, vertical coil (Scott 368V), guide line strip of 4, nicely centered for this very scarce issue, o.g., never hinged, almost Very Fine; with 1996 P.F. certificate. Scott \$1,100. Estimate \$500 - 750



- 257 ○ 1910, 1¢ green, S.L. watermark (Scott 374), enormous boardwalk margins all around, an incredible jumbo, wavy line machine cancel, Superb; with 2007 P.S.E. certificate graded SUP 98J. SMQ \$225. Estimate \$150 - 200



- 258 ○ 1910, 2¢ carmine, S.L. watermark (Scott 375), tremendous boardwalk margins, a fantastic used jumbo example, wavy line machine cancel, Superb; with 2019 P.S.E. certificate graded SUP 98J. SMQ \$200. Estimate \$150 - 200



- 259 ★ 1911, 3¢ deep violet, S.L. watermark (Scott 376), lovely near perfect centering, a beautiful stamp, o.g., very lightly hinged, Very Fine to Extremely Fine. Scott \$18. Estimate \$30 - 40



- 260 ★★ 1911, 1¢ green, S.L. watermark, imperf (Scott 383), a huge jumbo with parts of 8 surrounding stamps and mathematically perfect centering, a spectacular gem, o.g., never hinged, Superb; with 2006 P.S.E. certificate graded Gem 100J. SMQ \$34. Estimate \$30 - 40



- 261 ★★ 1911, 1¢ green, S.L. watermark, imperf (Scott 383), horizontal pair, a spectacular gem featuring mathematically perfect centering and parts of 10 surrounding stamps, o.g., never hinged, Superb; with 2007 P.S.E. certificate. Estimate \$50 - 75



- 262 ○ 1910, 1¢ green, S.L. watermark, vertical coil (Scott 385), pair, fresh and attractive pair, undergraded, light black cancel, Fine to Very Fine; with 2005 P.S.E. certificate graded F-VF 75 and 2006 P.F. and 2002 P.S.E. certificates. Scott \$250. Estimate \$150 - 200



- 263 ○ 1910, 2¢ carmine, S.L. watermark, horizontal coil (Scott 393), fresh and well centered, uncommonly choice, very lightly canceled, Very Fine. Scott \$55. Estimate \$40 - 60



- 264 ○ 1913, 5¢ blue, S.L. watermark, horizontal coil (Scott 396), pair, uncommonly well centered, a lovely pair, lightly canceled, Very Fine to Extremely Fine. Scott \$190. Estimate \$150 - 200



- 265 ★★田 1913, 1¢ Panama-Pacific, perf 12 (Scott 397), plate block of 6, deep rich color and impression, o.g., never hinged (minor gum skip affecting only one stamp), Fine to Very Fine. Scott \$450. Estimate \$100 - 150



- 266 ★★ 1913, 5¢ Panama-Pacific, perf 12 (Scott 399), a lovely fresh well centered example, o.g., never hinged, Very Fine. Scott \$150. Estimate \$75 - 100



- 267 ○ 1915, 10¢ Panama-Pacific, perf 10 (Scott 404), deep rich color and perfectly centered, a lovely gem, neat Chicago cd, Extremely Fine. Scott \$70. Estimate \$60 - 80

1912-1918 Washington-Franklin Issues



268 ★★ 1912, Washington, 2¢ carmine, S.L. watermark, vertical coil (Scott 411), pair, rich color and impression, o.g., never hinged, Very Fine.
Scott \$55. Estimate \$35 - 50



271 ★★田 1912, Franklin, 10¢ orange yellow, S.L. watermark, perf 12 (Scott 416), plate block of 6, nicely centered throughout, o.g., never hinged, Very Fine.
Scott \$825. Estimate \$600 - 800



269 ○ 1912, Washington, 1¢ green, S.L. watermark, horizontal coil (Scott 412), pair, impressively well centered, fairly light cancel, Extremely Fine and choice.
Scott \$120. Estimate \$100 - 150



272 ★ 1912, Franklin, 15¢ gray, S.L. watermark, perf 12 (Scott 418), huge even margins, an eye-popping gem, o.g., lightly hinged, Extremely Fine to Superb.
Scott \$78. Estimate \$150 - 200



270 ★★ 1912, Franklin, 8¢ pale olive green, S.L. watermark, perf 12 (Scott 414), part imprint single, post office fresh, vivid color, with large balanced margins, an impressive example of this difficult stamp, o.g., never hinged, Very Fine to Extremely Fine; with photocopy of 2018 P.S.E. certificate for strip from which this came.
Scott \$90. Estimate \$150 - 200



273 ★★/★田 1912, Franklin, 15¢ gray, S.L. watermark, perf 12 (Scott 418), plate block of 6, well centered, a lovely plate block, o.g., top center stamp lightly hinged, other 5 stamps never hinged, Very Fine.
Scott \$953 as singles. Estimate \$500 - 750



- 274 ★ 1914, Franklin, 20¢ ultramarine, S.L. watermark, perf 12 (Scott 419), superlative centering and bright fresh color, o.g., lightly hinged, Choice Very Fine; with 2017 P.S.E. certificate conservatively graded VF 80.
Scott \$175. SMQ \$190. Estimate \$150 - 200



- 277 ○ 1914, Washington, 1¢ green, S.L. watermark, perf 10 (Scott 424), vertical pair, as close to perfect as this issue comes, very light cancels, Superb; with 2014 P.S.E. certificate.
Estimate \$50 - 75



- 275 ★★ 1914, Washington, 1¢ green, S.L. watermark, perf 10 (Scott 424), gorgeous centering, a truly magnificent gem, o.g., never hinged, Extremely Fine to Superb.
Scott \$5. Estimate \$40 - 60



- 276 ○ 1914, Washington, 1¢ green, S.L. watermark, perf 10 (Scott 424), a one-in-a-million gem, perfectly centered within oversized jumbo margins, lightly canceled, Superb; with 2008 P.S.E. certificate graded SUP 98J. SMQ \$400.
Estimate \$250 - 350

- 278 ★★田 1914, Washington, 2¢ rose red, S.L. watermark, perf 10 (Scott 425), plate block of 6, immaculate and most impressive, o.g., never hinged, Extremely Fine to Superb.
Scott \$75. Estimate \$150 - 200



- 279 ★ 1914, Washington, 4¢ brown, S.L. watermark, perf 10 (Scott 427), fresh, nicely centered, o.g., lightly hinged, Very Fine.
Scott \$33. Estimate \$30 - 40



280 ○田 1915, Franklin, 11¢ dark green, S.L. watermark, perf 10 (Scott 434), top plate block of 6, an attractive used example, light registry cancels; light wrinkle at bottom, otherwise Very Fine, catalogs \$300 as a mint block.

Estimate \$120 - 150



281 ○ 1914, Washington, 2¢ carmine, S.L. watermark, vertical flat plate coil (Scott 442), fresh and beautifully well centered, a premium example, neat light cancel, Extremely Fine; with 2014 P.S.E. certificate graded XF 90. Scott \$45. SMQ \$150.

Estimate \$120 - 150



282 ○ 1914, Washington, 2¢ carmine, S.L. watermark, horizontal flat plate coil (Scott 444), perfectly centered within large margins, a gorgeous stamp that is just about as good as this issue comes, neat light cancel, Superb.

Scott \$40. Estimate \$75 - 100



283 ○ 1914, Washington, 5¢ blue, S.L. watermark, horizontal flat plate coil (Scott 447), pair, boxed handstamp cancel, Fine to Very Fine; with 2019 P.S.E. certificate.

Scott \$375. Estimate \$200 - 300



284 ○ 1915, Washington, 1¢ green, S.L. watermark, vertical rotary press coil (Scott 448), guide line pair, unusually nice for a postally used example, very lightly canceled, Fine to Very Fine, *much scarcer in any condition used than mint*. Scott \$250.

Estimate \$150 - 200



285 ○ 1916, Washington, 2¢ carmine, type III, S.L. watermark, vertical rotary press coil (Scott 450), a lovely gem featuring near perfect centering and excellent color, neat light cancel, Extremely Fine; with 2015 P.F. certificate.

Scott \$25. Estimate \$30 - 40



- 286 ★★ 1915, Washington, 2¢ red, type II, S.L. watermark, horizontal rotary press coil (Scott 454), freak vignette shift, pair, showing parts of the adjacent pair at top, quite fresh, o.g., never hinged, Very Fine for this. Scott \$360. Estimate \$100 - 150



- 289 ★★ 1916, Washington, 2¢ carmine, unwatermarked, perf 10 (Scott 463), mathematically perfect centering, a magnificent gem for the most demanding connoisseur, o.g., never hinged, Superb. Scott \$10. Estimate \$100 - 150



- 287 ○ 1915, Washington, 2¢ red, type II, S.L. watermark, horizontal rotary press coil (Scott 454), a lovely gem and as good a used example as can be found, wavy line machine cancel, Extremely Fine and choice; with 2015 P.F. certificate graded XF 90. Scott \$23. SMQ \$125. Estimate \$120 - 150



- 290 ★田 1916, Washington, 2¢ carmine, unwatermarked, perf 10 (Scott 463), plate block of 6, intense color and deep impression, o.g., n.h. except top middle stamp small hinge spot, Very Fine. Scott \$150. Estimate \$75 - 100



- 288 ○ 1916, Washington, 5¢ blue, S.L. watermark, horizontal rotary press coil (Scott 458), pair, marvelously well centered, Extremely Fine. Scott \$95. Estimate \$75 - 100



- 291 ★ 1916, Washington, 5¢ blue, unwatermarked, perf 10 (Scott 466), well centered within uncommonly large margins, o.g., hinged, a Very Fine jumbo. Scott \$65. Estimate \$75 - 100



- 292 ★ 1916, Washington, 7¢ black, unwatermarked, perf 10 (Scott 469), deep rich color, o.g., very lightly hinged, almost Very Fine. Scott \$110. Estimate \$50 - 75



- 295 ★★ 1916, Washington, 1¢ green, unwatermarked, imperf (Scott 481), a lovely gem with parts of 5 other stamps, o.g., never hinged, a Superb jumbo. Estimate \$40 - 60



- 293 ★ 1916, Franklin, 12¢ claret brown, unwatermarked, perf 10 (Scott 474), a lovely gem that is close to perfectly centered, o.g., very lightly hinged, Very Fine to Extremely Fine. Scott \$48. Estimate \$75 - 100



- 296 ★★ 1916, Washington, 3¢ violet, type II, unwatermarked, imperf (Scott 484), a spectacular jumbo gem, featuring mathematically perfect centering with parts of 8 neighboring stamps, o.g., never hinged, Superb; with 2016 P.S.E. certificate graded Gem 100J. SMQ \$121. Estimate \$100 - 150



- 294 ★★ 1916, Washington, 1¢ green, unwatermarked, imperf (Scott 481), a gorgeous single with parts of 5 other stamps, o.g., never hinged, a Superb jumbo. Estimate \$40 - 60



- 297 ★★ 1918, Washington, 1¢ green, unwatermarked, vertical rotary press coil (Scott 486), a perfectly centered gem, what a stamp! o.g., never hinged, Superb. Estimate \$60 - 80



- 298 ★★ 1916, Washington, 1¢ green, unwatermarked, horizontal rotary press coil (Scott 490), joint line pair, sensationally well centered, a magnificent gem, o.g., never hinged, Extremely Fine to Superb. Estimate \$50 - 75



- 302 ★★ 1922, Franklin, 10¢ orange yellow, unwatermarked, horizontal rotary press coil (Scott 497), near perfect centering and bright fresh color, o.g., never hinged, Extremely Fine and choice. Scott \$35. Estimate \$50 - 75



- 299 ★★ 1916, Washington, 2¢ carmine, type III, unwatermarked, horizontal rotary press coil (Scott 492), lovely color and attractive centering, o.g., never hinged, Very Fine. Scott \$19. Estimate \$30 - 40



- 303 ○ 1917, Washington, 1¢ green, unwatermarked, perf 11 (Scott 498), the epitome of perfection - a used gem! Superb; with 2012 P.S.E. certificate graded Superb 98. SMQ \$175. Estimate \$150 - 200



- 300 ★★ 1917, Washington, 3¢ violet, type I, unwatermarked, horizontal rotary press coil (Scott 493), a superlative, immaculate example that is close to perfection, o.g., never hinged, Extremely Fine to Superb. Scott \$30. Estimate \$60 - 80



- 304 ★★ 1917, Washington, 2¢ rose, type I, unwatermarked, perf 11, imperf vertically (Scott 499b), horizontal pair, o.g., never hinged; a vertical row of blind perfs is barely visible at right on the gum side, Very Fine. Scott \$2,200. Estimate \$100 - 150



- 301 ★★ 1917, Washington, 4¢ orange brown, unwatermarked, horizontal rotary press coil (Scott 495), pair, an immaculate gem, perfectly centered and with bright fresh color, o.g., never hinged, Extremely Fine to Superb. Scott \$50. Estimate \$75 - 100



305 ★★ 1917, Washington, 5¢ rose error, unwatermarked, perf 11 (Scott 505), the single error in a strip of 3, fresh and nicely centered, o.g., never hinged, almost Very Fine; with 2019 P.S.A.G. certificate. Scott \$1,000 as single error. Estimate \$500 - 750



308 ★★/★田 1917, Franklin, 12¢ claret brown, unwatermarked, perf 11 (Scott 512), plate block of 6, exceptionally well centered, o.g., 5 stamps never hinged, the plate number single is barely hinged, Very Fine. Scott \$150. Estimate \$120 - 150



306 ★★/★田 1917, Washington, 6¢ red orange, unwatermarked, perf 11 (Scott 506), plate block of 6, unusually well centered, o.g., 5 stamps never hinged, the plate number single is barely hinged, Very Fine. Scott \$180. Estimate \$200 - 300



309 ★★ 1917, Franklin, \$1 violet brown, unwatermarked, perf 11 (Scott 518), imprint pair, lovely color, an attractive pair, o.g., never hinged, Fine to Very Fine. Scott \$190. Estimate \$75 - 100



307 ★★ 1917, Franklin, 10¢ orange yellow, unwatermarked, perf 11 (Scott 510), nicely centered and fresh, o.g., never hinged, almost Very Fine. Scott \$34. Estimate \$20 - 30



- 310 ★★ 1917, Franklin, \$1 violet brown, unwatermarked, perf 11 (Scott 518), plate number and imprint strip of 3, a handsome strip, o.g., never hinged, almost Very Fine. Scott \$285+. Estimate \$120 - 150



- 311 ★★田 1918, Washington, 1¢ gray green, offset printing, perf 11, dramatic perf shift (Scott 525 var.), block of 4 (trying to be a block of 6), a striking misperf and a great position piece, o.g., never hinged, Very Fine for the issue. Estimate \$75 - 100



- 312 ★ 1918, Washington, 2¢ carmine, type V, offset printing (Scott 527), near perfect centering, a beautiful example of this scarce type, o.g., lightly hinged, Very Fine to Extremely Fine. Scott \$18. Estimate \$30 - 40



- 313 ★★ 1919, Washington, 1¢ green, offset printing, imperf (Scott 531), pair, an immaculate gem pair with huge margins, o.g., never hinged, Superb. Scott \$48. Estimate \$75 - 100



- 314 ★★ 1918, Washington, 2¢ carmine rose, type IV, offset printing, imperf (Scott 532), a spectacular jumbo gem with margins that are truly "eye-popping" - they don't come much better than this! o.g., never hinged, Superb; with 2018 P.F. certificate graded SUP 98J. Scott \$70. SMQ \$225 as plain 98. Estimate \$200 - 300



- 315 ★★ 1918, Washington, 2¢ carmine rose, type IV, offset printing, imperf (Scott 532), horizontal pair, perfect in every respect, o.g., never hinged, Extremely Fine to Superb; with 2004 P.F. certificate. Scott \$160. Estimate \$150 - 200



- 316 ★★ 1918, Washington, 2¢ carmine, type V, offset printing, imperf (Scott 533), fresh, with large balanced margins, a lovely example, o.g., never hinged, Very Fine to Extremely Fine; with 2018 P.F. certificate. Scott \$175. Estimate \$200 - 300



- 317 ○ 1918, Washington, 2¢ carmine, type V, offset printing, imperf (Scott 533), huge margins, Extremely Fine to Superb, SMQ does not have a jumbo price in a stamp of this grade, this stamp is worth considerably more; with 2007 P.S.E. certificate graded XF-Superb 95J. SMQ \$250. Estimate \$200 - 300



- 318 ★★ 1918, Washington, 2¢ carmine, type Va, offset printing, imperf (Scott 534), pair, beautifully well centered amid very large margins, o.g., never hinged, Extremely Fine to Superb. Scott \$63. Estimate \$100 - 150



- 319 ★★ 1918, Washington, 3¢ violet, type V, offset printing, imperf (Scott 535), pair, a flawless gem featuring exceptional centering and fresh color, o.g., never hinged, Extremely Fine. Scott \$38. Estimate \$50 - 75

1919-1929 Issues



- 320 ★★田 1919, Victory, 3¢ violet (Scott 537), plate block of 6, bright fresh color, o.g., never hinged, Fine to Very Fine. Scott \$350. Estimate \$150 - 200



- 321 ★★ 1920, Washington, 1¢ green, rotary press coil waste, perf 10 x 11 (Scott 542), extraordinarily well centered, a gem, o.g., never hinged, Extremely Fine to Superb. Scott \$30. Estimate \$60 - 80



- 322 ★★ 1920, Franklin, \$2 carmine & black (Scott 547), fresh and attractive. nice balanced margins, o.g., never hinged, Very Fine; with 2017 P.S.E. certificate graded VF 80. Scott \$240. SMQ \$270. Estimate \$250 - 350



- 323 ★★ 1920, 5¢ Pilgrim (Scott 550), bright fresh color, o.g., never hinged, Fine to Very Fine. Scott \$65. Estimate \$30 - 40



- 326 ★★ 1923, 12¢ brown violet (Scott 564), an attractive example with unusually large margins, o.g., never hinged, nearly Very Fine; with photocopy of 2002 P.S.E. certificate for block. Estimate \$60 - 80



- 324 ★★田 1923, 2¢ carmine (Scott 554), awesome full wide top plate block of 6, in a condition seldom found; with dazzling color and fully unblemished gum, a Gem! o.g., never hinged, Extremely Fine. Scott \$55. Estimate \$200 - 300



- 327 ★★田 1922, 15¢ gray (Scott 566), plate block of 6, a lovely multiple, o.g., never hinged, Very Fine. Scott \$400. Estimate \$250 - 350



- 325 ★★ 1923, 8¢ olive green (Scott 560), mathematically perfect centering, a gem example, o.g., never hinged, Extremely Fine and choice. Scott \$80. Estimate \$75 - 100



- 328 ★★ 1923, 30¢ olive brown, double transfer at bottom right (Scott 569 var.), o.g., never hinged, Very Fine; with 2018 P.F. certificate. Scott \$450. Estimate \$250 - 350



329 ★★田 **1923, \$1 violet brown (Scott 571)**, plate block of 6, fresh and beautifully well centered throughout, o.g., never hinged, Very Fine and choice.
Scott \$525. Estimate \$300 - 400



331 ★★田 **1925, 1½¢ Harding, yellow brown, imperf (Scott 576)**, centerline block of 4, the "ultimate" #576 block; huge margins including portions of surrounding 10 stamps, o.g., never hinged, Superb; with 2019 P.S.E. certificate graded Gem 100J.
Scott \$20. Estimate \$150 - 200



330 ○ **1923, \$5 carmine lake & dark blue (Scott 573a)**, fresh, large margins all around, lovely deep rich shades, an outstanding used example, neat slogan cancel, Extremely Fine to Superb; with 2019 P.S.A.G. certificate graded XF-SUP 95.
Scott \$30. SMQ \$170. Estimate \$150 - 200



332 ★ **1923, 1¢ green, rotary press coil waste, perf 11 x 10 (Scott 578)**, a handsome example with impressive centering that is close to perfect, o.g., very lightly hinged, Extremely Fine and choice; with photocopy of 2007 P.S.E. certificate.
Scott \$75. Estimate \$75 - 100



333 ★★ **1924, 5¢ blue, rotary press, perf 10 (Scott 586)**, superlative centering, an outstandingly choice gem, o.g., never hinged, Extremely Fine.
Scott \$38. Estimate \$40 - 60



- 334 ★★/★田 1926, 8¢ olive green, rotary press, perf 10 (Scott 589), plate block of 4, well centered, o.g., lightly hinged at top, never hinged at bottom, Very Fine. Scott \$300. Estimate \$200 - 300



- 335 ★★ 1926, 9¢ rose, rotary press, perf 10 (Scott 590), a lovely example, beautifully well centered, and showing natural gripper cuts at right, o.g., never hinged, Extremely Fine and choice; with photocopy of 2001 P.S.E. certificate for block. Scott \$13. Estimate \$30 - 40



- 336 ★★ 1923, 4¢ yellow brown, horizontal rotary press coil (Scott 601), line pair, immaculate, o.g., never hinged, Very Fine. Scott \$55. Estimate \$40 - 60



- 337 ★ 1924, 5¢ dark blue, horizontal rotary press coil (Scott 602), pair, wonderfully well centered, o.g., lightly hinged (right stamp with a trivial perf disc indent), Extremely Fine; with 2011 P.S.E. certificate graded XF 90. Estimate \$20 - 30



- 338 ★★田 1923, 2¢ Harding, flat plate (Scott 610), plate block of 10, signed in selva by the postmaster and assistant postmasters, o.g., never hinged, Fine to Very Fine. Estimate \$75 - 100



339 ★★/★田 1924, 1¢ Huguenot-Walloon (Scott 614), plate block of 6, well centered throughout, o.g., 4 stamps never hinged, Extremely Fine. Scott \$40. Estimate \$30 - 40

342 ★★ 1927, 1½¢ Harding, yellow brown, rotary press (Scott 633), an immense jumbo with parts of 8 surrounding stamps, o.g., never hinged, Superb. Estimate \$40 - 60



Ex 343

340 ★★ 1925, 5¢ Norse-American (Scott 621), perfectly centered within oversized margins, a fantastic gem! o.g., never hinged (minuscule gum skip), Superb. Scott \$19. Estimate \$40 - 60

343 ★★ 1929, Kans., 1¢ to 10¢ complete (Scott 658-668), a fresh and mostly well centered set, o.g., never hinged, Fine to Very Fine or better. Scott \$432. Estimate \$250 - 350



Ex 344



344 ★★/★ 1929, Kans., 3¢ to 10¢ (Scott 661-668), a fresh and well centered group, o.g., 4¢, 9¢, 10¢ never hinged / others lightly hinged, Very Fine. Scott \$235. Estimate \$100 - 150



341 ★ 1926, White Plains souvenir sheet (Scott 630), uncommonly well centered throughout, o.g., 2 hinge remnants in the bottom selvage (stamps n.h.), Very Fine. Scott \$325. Estimate \$150 - 200

345 ★★ 1929, 1¢ Kans. (Scott 658), a lovely example, o.g., never hinged, Very Fine; with 2002 P.S.E. certificate for block. Estimate \$20 - 30



- 346 ★★田 1929, 1¢ Kans. (Scott 658), block of 4, o.g., never hinged; with four 2002 P.S.E. certificates for the original block of 6. Scott \$20. Estimate \$30 - 40



- 349 ★★田 1929, 9¢ Nebr., overprint shift (Scott 678 var.), a fascinating variety with bottom Nebr. nearly cut off at bottom, corner margin block of 4, o.g., never hinged, Very Good. Scott \$280. Estimate \$150 - 200



- 347 ★★ 1929, 4¢ Kans. (Scott 662), an outstandingly choice gem, beautifully well centered within large margins, o.g., never hinged, Extremely Fine and choice. Scott \$35. Estimate \$40 - 60



- 350 ★★ 1929, 10¢ Nebr. (Scott 679), an exceptionally choice example, with premium centering and oversized margins, o.g., never hinged, Extremely Fine; with 2005 P.S.E. certificate. Scott \$180. Estimate \$150 - 200



- 348 ★★/★ 1929, Nebr., 4¢ to 10¢ (Scott 673-679), select gems, each uncommonly well centered, o.g., 4¢, 5¢, 7¢ and 10¢ key value / 6¢ and 8¢ hinged, Extremely Fine and choice. Scott \$325. Estimate \$200 - 300



- 351 ★★田 1929, 10¢ Nebr., downward shifted overprint (Scott 679 var), block of 4, a desirable item for the Kansas-Nebraska specialist, o.g., never hinged, Very Fine. Scott \$720+. Estimate \$200 - 300

1932-2002 Issues



352 ★★ **1932, 6¢ deep orange coil (Scott 723)**, pair, post office fresh, bold color, virtually perfectly centered, a fantastic pair, o.g., never hinged, Extremely Fine to Superb; with 2003 P.S.E. certificate graded XF-SUP 95. SMQ \$165.
Estimate \$150 - 200



353 ★★ **1932, 6¢ deep orange coil (Scott 723)**, line pair, o.g., never hinged (the left stamp with a trivial microscopic perf disc indent), Extremely Fine; with 2014 P.S.E. certificate graded XF 90. Scott \$83. SMQ \$165. Estimate \$100 - 150



354 ★★ **1938, 1½¢ Martha Washington (Scott 805)**, o.g., never hinged, Superb. Estimate \$40 - 60



355 ★★ **1938, 2¢ John Adams (Scott 806)**, o.g., never hinged, Superb. Estimate \$40 - 60



356 ★★ **1938, 3¢ Jefferson and 30¢ Theodore Roosevelt, printing varieties (Scott 807, 830 vars.)**, the 3¢ is a block of 4 with severe dry print resulting in the top portion partially unprinted; the 30¢ is a pair with double paper (spliced together during printing), o.g., never hinged, Very Fine, an interesting EFO lot. Estimate \$40 - 60



357 ★★ **1938, 4¢ Madison (Scott 808)**, o.g., never hinged, Superb. Estimate \$40 - 60



358 ★★ **1938, 5¢ Monroe (Scott 810)**, o.g., never hinged, Superb. Estimate \$40 - 60



359 ★★ **1938, 6¢ John Quincy Adams (Scott 811)**, o.g., never hinged, Superb. Estimate \$40 - 60



- 360 ★★ 1938, 13¢ Millard Fillmore (Scott 818), o.g., never hinged, Superb. Estimate \$40 - 60



- 364 ★ 1951, \$1 Woodrow Wilson, watermarked USIR (Scott 832b), o.g., very lightly hinged, Very Fine; with photocopy of 2017 P.F. certificate for block. Scott \$120. Estimate \$100 - 150



- 361 ★★ 1938, 17¢ Andrew Johnson (Scott 822), o.g., never hinged, Superb. Estimate \$40 - 60



- 365 ★★/★田 1954, \$1 Presidential, bright magenta & black (Scott 832g), plate block of 4, a well centered example of this scarce shade, o.g., lightly hinged at top, never hinged at bottom, Very Fine. Scott \$400. Estimate \$150 - 200



- 362 ✉ 1938, 18¢ Presidential (Scott 823), solo use of 18¢ Prexie to pay 3¢ first class rate plus 15¢ registered rate from Saint Petersburg, FL to Buffalo, NY; nice small size cover with four registered and parcel post cancels on reverse, Fine to Very Fine, an uncommon Prexie usage. Estimate \$50 - 75



- 363 ★★ 1938, \$1 Presidential (Scott 832), a flawless gem in outstandingly choice condition, o.g., never hinged, Extremely Fine to Superb; with P.S.E. certificate (encapsulated) graded XF-SUP 95. SMQ \$45. Estimate \$30 - 40



366 ★★田 1938, \$2 Harding (Scott 833), plate block of 4, well centered, o.g., never hinged, Very Fine. Scott \$95. Estimate \$60 - 80



368 ★★田 1938, \$5 Coolidge (Scott 834), plate block of 4, well centered throughout, o.g., never hinged (gum skip), Extremely Fine and choice. Scott \$375. Estimate \$150 - 200



367 ★★田 1938, \$5 Coolidge (Scott 834), plate block of 4, perfect in every respect, o.g., never hinged, Extremely Fine and choice. Scott \$375. Estimate \$200 - 300

369 ★★ 1939, 1¢ to 10¢ Presidential coils (Scott 839-851), pairs and line pairs (4 are line strips of 4), mostly all different (2¢ and 4¢ have duplicates), a fresh clean lot, all are o.g., never hinged, Very Fine. Scott approximately \$150. Estimate \$50 - 75



370 ★ 1939, 10¢ Tyler, horizontal coil (Scott 847), line pair, magnificent centering, o.g., very lightly hinged, Extremely Fine to Superb, not listed by SMQ; with 2017 P.S.E. certificate graded XF-SUP 95. Scott \$43. Estimate \$50 - 75



- 371 ★★ 1940, 1¢ Audubon (Scott 874), a gorgeous gem, perfect in every respect, o.g., never hinged, Superb; with P.S.E. certificate (encapsulated) graded SUP 98. SMQ \$50.
Estimate \$35 - 50



- 374 ★★田 1940, 1¢ Defense, imperf between (Scott 899b), block of 4, o.g., never hinged, Very Fine.
Scott \$65. Estimate \$40 - 60



- 372 ★★ 1940, 1¢ and 2¢ Defense, imperf between (Scott 899b, 900a), horizontal pairs, o.g., never hinged, Very Fine.
Scott \$70. Estimate \$40 - 60



- 375 ★ 1947, 3¢ Thomas Edison (Scott 945), a gorgeous gem, perfect in every respect, Superb, the cert mistakenly identifies this as Scott #894 - an interesting modern certificate error; with P.S.E. certificate (encapsulated) graded SUP 98. SMQ \$25. Estimate \$20 - 30



- 373 ★★田 1940, 1¢ and 2¢ Defense, imperf between (Scott 899b, 900a), blocks of 4, o.g., never hinged, Very Fine.
Scott \$140. Estimate \$75 - 100



- 376 ★★ 1956, \$5 Hamilton (Scott 1053), plate number single, flawless in every respect, a gorgeous gem for the most demanding perfectionist, o.g., never hinged, Superb; with 2007 P.S.E. certificate graded SUP 98. SMQ \$200.
Estimate \$150 - 200



- 377 ★★ 1960, 1¼¢ Santa Fe coil, large perf holes (Scott 1054A var.), guide line strip of 4 with partial plate number 26670 at right, elusive joint line strip, not often offered, o.g., never hinged, Very Fine to Extremely Fine; with 2002 P.F. certificate. Scott \$200. Estimate \$150 - 200



- 378 ★★ 1958, 4¢ Lincoln coil, wet printing (Bureau precanceled) (Scott 1058b), line pair, immaculate, o.g., never hinged, Very Fine. Scott \$325. Estimate \$200 - 300



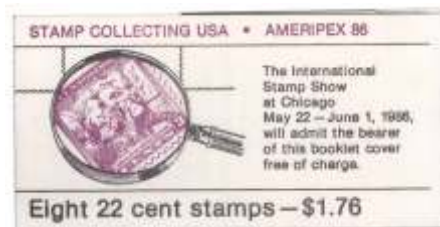
- 379 ★★ 1971, 8¢ Flag over White House, imperf (Scott 1338Fi var.), horizontal strip of 6, immaculate, o.g., never hinged, Extremely Fine. Scott \$105+. Estimate \$75 - 100



- 380 ★★ 1979, 15¢ John Paul Jones, pair with vertical gutter between (Scott 1789Pg), the blue is slightly out of register, a lovely example, o.g., never hinged, Very Fine to Extremely Fine. Scott \$700. Datz \$700. Estimate \$400 - 600



- 381 ★★ 1981, 20¢ Fire Pumper coil, imperf (Scott 1908a), pair, a beautiful modern error, o.g., never hinged, Very Fine. Scott \$75. Estimate \$50 - 75



- 382 ★★ 1986, 22¢ Stamp Collecting, black omitted on two stamps (Scott 2201b), two booklet panes of 4 in unexploded booklet, o.g., never hinged, Extremely Fine. Scott \$50. Estimate \$35 - 50



- 383 2002 (37¢) Flag coil, counterfeit (Scott 3622-CF1), strip of 5, o.g., never hinged; piece of tape on the far left stamp; great example of the counterfeit item with wrong date and colors, Extremely Fine. Scott \$200. Estimate \$100 - 150

Airmail



384 ★★ **Airmail, 1918, 6¢ orange (Scott C1)**, lovely fresh color, o.g., never hinged, Fine to Very Fine.
Scott \$110. Estimate \$50 - 75



387 ★★田 **Airmail, 1918, 6¢ orange (Scott C1)**, block of 4, a fresh attractive block, o.g., never hinged, Fine to Very Fine.
Scott \$440. Estimate \$150 - 200



385 ★★★ **Airmail, 1918, 6¢ orange (Scott C1)**, plate number and imprint strip of 3, well centered throughout, o.g., 2 stamps never hinged, Very Fine.
Scott \$275 as singles. Estimate \$150 - 200



388 ★★ **Airmail, 1918, 16¢ green (Scott C2)**, unusually large margins, o.g., never hinged, nearly Very Fine.
Scott \$120. Estimate \$60 - 80



386 ★★田 **Airmail, 1918, 6¢ orange (Scott C1)**, arrow block of 4, lovely fresh color, o.g., never hinged, Fine to Very Fine.
Scott \$440. Estimate \$200 - 300



389 ★★/★田 **Airmail, 1918, 16¢ green (Scott C2)**, centerline block of 4, o.g., previously hinged (2 stamps never hinged), Very Fine to Extremely Fine; with 2018 P.F. certificate.
Scott \$275. Estimate \$200 - 300



390 ★★ **Airmail, 1918, 24¢ carmine rose & blue (Scott C3)**, spectacularly choice centering, o.g., never hinged; cert mentions a tiny trivial gum indentation at right - barely visible except under magnification, Extremely Fine; with 2018 P.S.A.G. certificate for block.
Scott \$130. Estimate \$100 - 150



393 ★田 **Airmail, 1918, 24¢ carmine rose & blue (Scott C3)**, block of 4, a fresh well centered block, o.g., lightly hinged, Very Fine.
Scott \$260. Estimate \$150 - 200



391 ★ **Airmail, 1918, 24¢ carmine rose & blue (Scott C3)**, exceptionally well centered, o.g., very lightly hinged, Extremely Fine.
Scott \$65. Estimate \$50 - 75



394 ★★ **Airmail, 1923, 16¢ dark blue (Scott C5)**, plate number single, a magnificent gem example, most impressive, o.g., never hinged, Extremely Fine and choice.
Scott \$120. Estimate \$150 - 200



392 ★★田 **Airmail, 1918, 24¢ carmine rose & blue (Scott C3)**, arrow block of 4, a lovely fresh example, o.g., never hinged, Fine to Very Fine; with 2019 P.F. certificate.
Scott \$520. Estimate \$200 - 300



395 ★ **Airmail, 1923, 16¢ dark blue (Scott C5)**, wonderfully well centered with brilliant fresh color, o.g., barest trace of hinge, Extremely Fine and choice; with 2017 P.F. certificate graded XF 90.
Scott \$60. SMQ \$95. Estimate \$75 - 100



396 ○ **Airmail, 1923, 16¢ dark blue (Scott C5)**, spectacularly well centered within huge jumbo margins, fairly light but elaborate Omaha cancel; repaired corner perf at top right, otherwise Superb, special this month only: no extra charge for repairs. Seriously - this is still one very magnificent stamp; with 2014 P.S.E. certificate graded F-VF 75, apparent centering GEM 100.
Scott \$28. Estimate \$30 - 40



397 ★★ **Airmail, 1923, 24¢ carmine (Scott C6)**, plate number single, a lovely fresh example, o.g., stamp never hinged, hinged in selvage only, Fine to Very Fine.
Scott \$130. Estimate \$60 - 80



398 ★ **Airmail, 1930, 65¢ Graf Zeppelin (Scott C13)**, exceptionally well centered, o.g., very lightly hinged, Very Fine to Extremely Fine.
Scott \$180. Estimate \$120 - 150



399 ★★ **Airmail, 1930, 65¢ Graf Zeppelin (Scott C13)**, fresh and nicely centered, o.g., never hinged, almost Very Fine; with 2017 P.F. certificate for block.
Scott \$250. Estimate \$100 - 150



400 ○ **Airmail, 1930, \$1.30 Graf Zeppelin (Scott C14)**, flawless centering, neat light machine slogan cancel, an Extremely Fine gem; with 2018 P.F. certificate graded XF 90.
Scott \$375. SMQ \$625. Estimate \$400 - 600



401 ○ **Airmail, 1930, \$2.60 Graf Zeppelin (Scott C15)**, superlative centering, neat light machine slogan cancel, Very Fine to Extremely Fine; with 2018 P.F. certificate graded VF-XF 85.
Scott \$550. SMQ \$725. Estimate \$500 - 750



402 ★★ **Airmail, 1931, 5¢ Winged Globe, rotary (Scott C16)**, a perfectly centered gem, immaculate, o.g., never hinged, Extremely Fine and choice; with P.S.E. certificate (encapsulated) graded XF 90. SMQ \$85. Estimate \$60 - 80



403 ★★ **Airmail, 1932, 8¢ Winged Globe (Scott C17)**, a perfectly centered gem, immaculate, o.g., never hinged, Extremely Fine and choice; with P.S.E. certificate (encapsulated) graded XF 90. SMQ \$80. Estimate \$60 - 80



- 404 ★★ Airmail, 1933, 50¢ “Chicago” Zeppelin (Scott C18), near perfect centering, o.g., never hinged, Extremely Fine. Scott \$75. Estimate \$60 - 80



- 405 ★★ Airmail, 1971, 11¢ Jet, miscut (Scott C78a var.), booklet pane of 4, inscription in gutter inverted, o.g., stamps never hinged, Very Fine to Extremely Fine. Scott \$100. Estimate \$75 - 100



- 406 ✉ Military Airmail, 1944-45, 6¢ Transport, “R.F.” overprint e (Scott CM5), used on a censored 1944 cover from the French battleship Richelieu to the U.S.A. Scott \$600. Estimate \$300 - 400

Special Delivery



- 407 ○ Special Delivery, 1885, 10¢ blue (Scott E1), the centering and quality overall is most impressive, very lightly canceled, Extremely Fine. Scott \$80. Estimate \$75 - 100



- 408 ○ Special Delivery, 1888, 10¢ blue (Scott E2), well centered with massive margins all around, a gorgeous gem example, Extremely Fine; with 2017 P.S.E. certificate. Scott \$45. Estimate \$120 - 150



- 409 S Special Delivery, 1902, 10¢ ultramarine, overprinted “Specimen” (Scott E6SE), lovely fresh color, unused without gum, Fine to Very Fine overall even with the pulled perf. Scott \$175. Estimate \$60 - 80



- 410 ★★ Special Delivery, 1902, 10¢ ultramarine (Scott E6), near perfect centering and lovely bright fresh color, o.g., never hinged, Extremely Fine. Scott \$525. Estimate \$400 - 600



- 411 ★★ **Special Delivery, 1902, 10¢ ultramarine (Scott E6)**, a lovely fresh example with excellent color, o.g., never hinged, Fine to Very Fine; with photocopy of 2016 P.S.E. certificate for block. Scott \$525. Estimate \$250 - 350



- 415 ★ **Special Delivery, 1911, 10¢ ultramarine (Scott E8)**, plate number single, a gorgeous gem, o.g., very lightly hinged, Extremely Fine to Superb. Scott \$110. Estimate \$150 - 200



- 412 ★★ **Special Delivery, 1908, 10¢ green (Scott E7)**, great centering that is close to perfect, o.g., never hinged, Extremely Fine and choice; with photocopy of 2016 P.S.E. certificate graded XF 90 for block. Scott \$140. SMQ \$275. Estimate \$200 - 300



- 416 ★ **Special Delivery, 1914, 10¢ ultramarine (Scott E9)**, beautifully well centered, o.g., lightly hinged, Very Fine to Extremely Fine. Scott \$190. Estimate \$100 - 150



- 413 ★★ **Special Delivery, 1908, 10¢ green (Scott E7)**, beautifully fresh and well centered, o.g., never hinged, Extremely Fine. Scott \$140. Estimate \$50 - 75



- 417 ★★ **Special Delivery, 1917, 10¢ ultramarine (Scott E11 var.)**, "pink back" variety, a gorgeous well centered example, with exquisitely fresh color, o.g., never hinged, Extremely Fine and choice. Scott \$45. Estimate \$75 - 100



- 414 ○ **Special Delivery, 1908, 10¢ green (Scott E7)**, Extremely Fine to Superb; with 2012 P.S.E. certificate graded XF-Superb 95. Scott \$50. SMQ \$255. Estimate \$200 - 300



- 418 ★★ **Special Delivery, 1917, 10¢ ultramarine (Scott E11)**, an especially choice margin single with near perfect centering, o.g., never hinged, Extremely Fine. Scott \$45. Estimate \$60 - 80



Registry



419 ★★ **Special Delivery, 1922, 10¢ gray violet (Scott E12)**, beautifully fresh and well centered, o.g., never hinged, Very Fine to Extremely Fine.
Scott \$95. Estimate \$75 - 100

422 ★ **Registry, 1911, 10¢ ultramarine (Scott F1)**, choice centering that is very close to perfect, o.g., very lightly hinged, Extremely Fine.
Scott \$80. Estimate \$75 - 100



420 ★★ **Special Delivery, 1925, 15¢ deep orange (Scott E13)**, beautifully well centered, o.g., never hinged, Very Fine to Extremely Fine.
Scott \$75. Estimate \$50 - 75

423 ○ **Registry, 1911, 10¢ ultramarine (Scott F1)**, well centered within oversized margins, lightly canceled, an Extremely Fine jumbo; with 2018 P.S.E. certificate graded XF 90J.
Scott \$15. SMQ \$70. Estimate \$50 - 75



421 ★★/★田 **Special Delivery, 1925, 15¢ deep orange (Scott E13)**, plate block of 6, nicely centered throughout, o.g., 4 stamps never hinged, Very Fine.
Scott \$450. Estimate \$250 - 350

Postage Due



- 424 ★★ Postage Due, 1879, 1¢ brown (Scott J1), huge margins, o.g., never hinged (couple minor gum wrinkles); natural s.e. at left, Very Fine. Scott \$260. Estimate \$100 - 150



- 425 ★★ Postage Due, 1894, 2¢ vermilion (Scott J30), an attractive collectible example of this very scarce issue, with bright fresh color, o.g., never hinged, Fine; with photocopy of 2016 P.F. certificate for block. Scott \$1,900. Estimate \$500 - 750



- 426 ★ Postage Due, 1894, 1¢ deep claret (Scott J31), vibrant color and razor sharp impression, o.g., hinge remnant, Very Fine. Scott \$73. Estimate \$35 - 50



- 427 ★ Postage Due, 1894, 10¢ deep claret (Scott J35), mathematically perfect centering and bright fresh color, o.g., lightly hinged, Extremely Fine and choice. Scott \$350. Estimate \$350 - 500



- 428 ★★/★田 Postage Due, 1895, 1¢ deep claret (Scott J38), plate block of 6, a premium block, exceptionally well centered throughout, o.g., 4 stamps never hinged, Very Fine to Extremely Fine. Scott \$270. Estimate \$150 - 200



- 429 ★★ Postage Due, 1895, 2¢ deep claret (Scott J39), a magnificent top sheet margin single, fresh and beautifully well centered, o.g., never hinged, Extremely Fine. Scott \$40. Estimate \$50 - 75



- 430 ★★ Postage Due, 1895, 5¢ deep claret (Scott J41), dazzling deep color, o.g., never hinged; trivial perf disc impression on gum, Fine to Very Fine. Scott \$280. Estimate \$100 - 150



- 431 ★ **Postage Due, 1895, 5¢ deep claret (Scott J41)**, gorgeous color, o.g., lightly hinged twice, Very Fine.
Scott \$110. Estimate \$40 - 60



- 432 ★★ **Postage Due, 1895, 10¢ deep claret (Scott J42)**, rich color, o.g., never hinged, almost Very Fine.
Scott \$280. Estimate \$100 - 150



- 433 ○ **Postage Due, 1897, 30¢ deep claret (Scott J43)**, nicely centered as well, full o.g., never hinged plus a lovely c.d.s, Very Fine to Extremely Fine.
Scott \$75. Estimate \$50 - 75



- 434 ○田 **Postage Due, 1897, 30¢ deep claret (Scott J43)**, block of 4, block is o.g., n.h. despite the cancel, which likely paid the rate for an item but was never used on the actual mail, socked-on-the-nose c.d.s. Jan 31/ 1905/ SOUTH OMAHA NEB, Fine to Very Fine.
Scott \$450. Estimate \$200 - 300



- 435 ★★ **Postage Due, 1914, 1¢ carmine lake (Scott J52)**, exceptionally well centered, o.g., never hinged, Extremely Fine.
Scott \$220. Estimate \$150 - 200



- 436 ★★ **Postage Due, 1914, 1¢ carmine lake (Scott J52)**, an attractive example with excellent color, o.g., never hinged, Fine to Very Fine.
Scott \$220. Estimate \$75 - 100



- 437 ★★田 Postage Due, 1914, 1¢ carmine lake (Scott J52), block of 4, lovely fresh color, o.g., never hinged, Fine to Very Fine; with photocopy of 2018 P.F. certificate for block of 10. Scott \$880. Estimate \$350 - 500



- 438 ★★ Postage Due, 1914, 30¢ carmine lake (Scott J57), nice appearing wide margined stamp with vivid color, o.g., never hinged; reperforated at bottom, otherwise Extremely Fine; with 2009 P.F. certificate. Scott \$525. Estimate \$150 - 200



- 439 ★★田 Postage Due, 1917, 2¢ rose red (Scott J62a), full wide margin top plate block of 6, a gorgeous wide top in the handsome rose red shade, o.g., never hinged, Very Fine; with 2012 P.S.E. certificate. Scott \$125 ++. Estimate \$200 - 300



- 440 ★★ Postage Due, 1917, 30¢ carmine rose (Scott J66), quite nicely centered, o.g., never hinged, Very Fine. Scott \$220. Estimate \$150 - 200



- 441 ★★/★ Postage Due, 1917, 50¢ carmine rose (Scott J67), plate number and imprint strip of 3, nicely centered, o.g., 2 stamps never hinged (gum bends); weak perms in the selvage with some hinge reinforcement, Very Fine overall. Scott \$790 as singles. Estimate \$400 - 600



- 442 ★★ Postage Due, 1930, 3¢ carmine (Scott J72), near perfect centering, o.g., never hinged, Very Fine to Extremely Fine. Scott \$48. Estimate \$50 - 75



- 443 ★★ Postage Due, 1930, 5¢ carmine (Scott J73), an immaculate gem, beautifully well centered, o.g., never hinged, Very Fine to Extremely Fine.
Scott \$43. Estimate \$50 - 75



- 444 ★★ Postage Due, 1930, \$5 carmine, wet printing (Scott J78), flawless - just simply flawless, o.g., never hinged, Extremely Fine to Superb.
Scott \$85. Estimate \$100 - 150



- 445 ★★ Postage Due, 1930, \$5 carmine, wet printing (Scott J78), plate number single, o.g., never hinged, Very Fine to Extremely Fine.
Scott \$85. Estimate \$60 - 80

Offices in China



- 446 ★★/★田 Offices in China, 1919, 2¢ on 1¢ green (Scott K1), block of 4, magnificent centering, o.g., hinge remnant at top, never hinged at bottom; small thin at top right, otherwise Extremely Fine.
Scott \$180 as singles. Estimate \$100 - 150



- 447 ★★田 Offices in China, 1919, 2¢ on 1¢ green (Scott K1), plate block of 6, an attractive nicely centered plate block, o.g., never hinged, Very Fine.
Scott \$600. Estimate \$300 - 400



- 448 ★田 Offices in China, 1919, 4¢ on 2¢ rose (Scott K2), top plate block of 6, a fresh and attractive example of this elusive plate block, o.g., middle two lightly hinged, others never hinged, Very Fine.
Scott \$300. Estimate \$150 - 200



- 449 ★ Offices in China, 1919, 8¢ on 4¢ brown (Scott K4), rich radiant color and impression, large even jumbo margins, o.g., Extremely Fine; with 2015 P.F. certificate graded XF 90.
Scott \$55. SMQ \$85. Estimate \$75 - 100



- 450 ★田 Offices in China, 1919, 8¢ on 4¢ brown (Scott K4), plate block of 6, lovely fresh color, o.g., never hinged, Fine.
Scott \$1,150. Estimate \$350 - 500



- 451 ★★ Offices in China, 1919, 10¢ on 5¢ blue (Scott K5), lovely centering and bright fresh color, o.g., never hinged, almost Very Fine; with photocopy of 2017 P.F. certificate for pair.
Scott \$160. Estimate \$75 - 100



- 452 ★★田 Offices in China, 1919, 18¢ on 9¢ salmon red (Scott K9), plate block of 6, excellent color, o.g., never hinged, Fine to Very Fine.
Scott \$1,200. Estimate \$400 - 600



- 453 ★★ Offices in China, 1922, 2¢ on 1¢ green (Scott K17), attractive fresh color, o.g., never hinged, Fine to Very Fine; with photocopy of 2019 P.F. certificate for block.
Scott \$225. Estimate \$75 - 100

Officials



454 (★) **Agriculture Dept., 1873, 30¢ yellow (Scott O9)**, exceptionally well centered, very bright and fresh, unused without gum, Very Fine. Scott \$275. Estimate \$150 - 200



455 ★ **State Dept., 1873, 15¢ dark green (Scott O64)**, fresh and attractive, o.g., barest trace of hinge (appears never hinged), Fine to Very Fine; with 2017 P.F. certificate. Scott \$350. Estimate \$150 - 200



456 ★★ **War Dept., 1873, 3¢ rose (Scott O85)**, beautiful fresh color, o.g., never hinged (rare thus!), Fine to Very Fine. Scott \$600. Estimate \$300 - 400



457 ★★ **War Dept., 1873, 15¢ rose (Scott O90)**, fresh and bright, o.g., never hinged, Fine to Very Fine. Scott \$190. Estimate \$75 - 100



458 S **Interior Dept., 1875 Special Printing, 2¢ vermilion, overprinted "Specimen" (Scott O16SD)**, fresh and well centered, without gum as issued, Very Fine. Scott \$140. Estimate \$75 - 100



459 S **Navy Dept., 1875 Special Printing, 1¢ ultramarine, overprinted "Specimen" (Scott O35SD)**, beautiful centering and color, without gum as issued, Very Fine. Scott \$35. Estimate \$30 - 40



460 S **Post Office Dept., 1875 Special Printing, 1¢ black, overprinted "Specimen" (Scott O47SD)**, exceptionally well centered, without gum as issued, Very Fine to Extremely Fine. Scott \$45. Estimate \$60 - 80



461 S **Treasury Dept., 1875 Special Printing, 1¢ dark brown, overprinted "Specimen" (Scott O72SD)**, well centered with rich color, without gum as issued, Very Fine to Extremely Fine. Scott \$80. Estimate \$75 - 100



- 462** ★★ **Agriculture Dept., 1879, 3¢ yellow (Scott O95)**, bright fresh color, o.g., never hinged, Fine; with photocopy of 2016 P.F. certificate for block.
Scott \$1,250. Estimate \$350 - 500



- 463** ★★ **Justice Dept., 1879, 3¢ bluish purple (Scott O106)**, very bright and fresh, o.g., never hinged, Fine to Very Fine.
Scott \$425. Estimate \$150 - 200

Newspaper Stamps, Parcel Post, Telegraphs



- 464** ★ **Newspaper, 1894, 1¢ intense black (Scott PR90)**, jumbo margins, o.g., previously hinged; tiny crease, otherwise Extremely Fine.
Scott \$400. Estimate \$120 - 150



- 465** ★ **Newspaper, 1894, 4¢ intense black (Scott PR92)**, great looking, o.g., hinge remnant; thin speck, Very Fine appearance.
Scott \$550. Estimate \$120 - 150



466 ★★★ Parcel Post, 1913, 2¢ carmine rose (Scott Q2), strip of 4, o.g., 3 stamps never hinged, Fine to Very Fine. Scott \$43. Estimate \$25 - 35



467★★ Parcel Post, 1913, 3¢ carmine rose (Scott Q3), plate number single, a flawless gem in every respect, with mathematically perfect centering and fresh bright color, o.g., never hinged, Extremely Fine to Superb. Scott \$24. Estimate \$40 - 60



468★ Parcel Post, 1913, 75¢ carmine rose (Scott Q11), sensational centering and margins, o.g., very lightly hinged; faint trivial corner crease, still Superb, a gem! Scott \$80. Estimate \$100 - 150



469★田 Parcel Post Postage Due, 1913, 2¢ dark green (Scott JQ2), block of 4, well centered throughout, o.g., lightly hinged, Very Fine. Scott \$260. Estimate \$120 - 150



470★★田 Special Handling, 1925-40, 10¢ to 25¢ complete (Scott QE1-QE4a), a lovely set of blocks of 4, with the 25¢ being QE4a, all well centered (some gradable), o.g., never hinged, Very Fine to Extremely Fine. Scott \$97 as singles. Estimate \$100 - 150



471 ○ Special Handling, 1955, 20¢ light green, dry printing (Scott QE3a), well centered, fairly light cancel, Extremely Fine. Scott \$150. Estimate \$100 - 150



472 ★★ Postal Telegraph Co., 1920, dark blue, handstamped with date in single line numerals (Scott 15T49B), glazed o.g., never hinged, Extremely Fine. Scott \$825. Estimate \$250 - 350



473 ★★ Postal Telegraph Co., 1942, 5¢ pink, Armed Forces official (Scott 15TO29), post office fresh, o.g., never hinged, Very Fine to Extremely Fine. Scott \$55. Estimate \$35 - 50



474 ★★ Postal Telegraph Co., 1942, 25¢ pale blue, Armed Forces official (Scott 15TO30), fresh, o.g., never hinged, Very Fine to Extremely Fine. Scott \$65. Estimate \$35 - 50

Postal Stationery



475 ✉ **Envelope, 1853, 3¢ red, die 2 (Scott U3)**, used from Rockport, N.Y. Mar 24 with enclosure May 20, 1856 re: "waiting to forward letters to college", Fine to Very Fine. Scott \$100. Estimate \$30 - 40



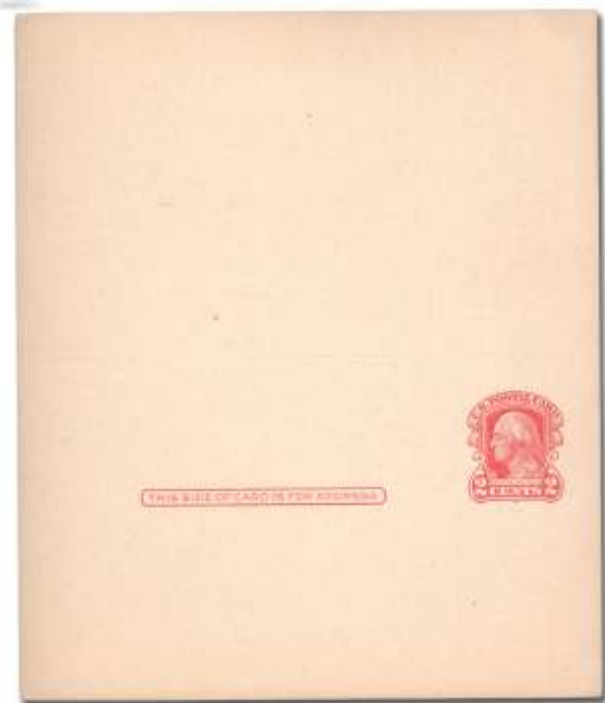
476 ★ **Envelope, 1920, 2¢ on 3¢ dark violet on amber (Scott U478)**, full corner cut square, Very Fine to Extremely Fine, *scarce*. Scott \$250+. Estimate \$100 - 150



477 ★ **Envelope, 1920, 2¢ on 3¢ dark violet, die 5 (Scott U479)**, cut square, Very Fine to Extremely Fine; signed J. M. Bartels. Scott \$240+. Estimate \$100 - 150



478 ★✉ **Postal Card, 1898, 1¢ black on buff (Scott UX15)**, Extremely Fine. Scott \$48. Estimate \$30 - 40



479 ★✉ **Paid Reply Postal Card, 1918, 2¢+2¢ red on buff (Scott UY8)**, unsevered, unfolded, Very Fine. Scott \$90. Estimate \$40 - 60

Revenue and Duck Stamps



- 480 ○ **Revenue, 1862, First Issue, 70¢ Foreign Exchange, imperf (Scott R65a)**, large margins all around, a gem, Boston 1864 handstamped cancel, Very Fine to Extremely Fine. Scott \$725. Estimate \$500 - 750



- 481 ★ **Potato Tax, 1935, Tax Exempt Potatoes, 25 lb black brown (Scott RI17a)**, complete unexploded booklet of two panes, disturbed o.g., however, stamps are not stuck together as in some examples; slight rust marks around staple holes and some trivial toning on reverse, Fine to Very Fine overall, *a great rarity with very few intact booklets known.* Scott \$5,500. Estimate \$750 - 1,000



- 482 ★★ **Narcotic Tax, 1964, 3¢ violet, rouletted 7 (Scott RJA45b)**, bright color and quite fresh, o.g., never hinged, Very Fine. Scott \$175. Estimate \$100 - 150



- 483 ★★ **Narcotic Tax, 1919, 20¢ violet, rouletted 7 (Scott RJA58b)**, intense color on white paper, o.g., never hinged, Very Fine to Extremely Fine. Scott \$250. Estimate \$100 - 150



- 484 (★) **Narcotic Tax, 1919, 20¢ violet, imperf (Scott RJA70a)**, post office fresh, without gum as issued, Very Fine to Extremely Fine. Scott \$300. Estimate \$200 - 300



- 485 ★★ **Narcotic Tax, 1963, 2¢ violet, imperf (Scott RJA80a)**, fresh with vivid color, o.g., never hinged, Very Fine to Extremely Fine. Scott \$175. Estimate \$100 - 150



- 486 ★★ **Narcotic Tax, 1963, 20¢ violet, rouletted 7 (Scott RJA99b)**, immaculate, o.g., never hinged, Very Fine to Extremely Fine. Scott \$425. Estimate \$250 - 350



- 487 ○ **Consular Service Fee, 1924, \$2.50 blue (Scott RK24)**, a neat little group each embossed, Fine to Very Fine. Scott \$120. Estimate \$50 - 75



- 488 ○ **Consular Service Fee, 1924, \$5 brown red (Scott RK25)**, Fine. Scott \$140. Estimate \$40 - 60



- 489 ★★ **Hunting Permit, 1936, \$1 Canada Geese (Scott RW3)**, fresh and nicely centered, o.g., never hinged, almost Very Fine; with photocopy of 2019 P.F. certificate for block. Scott \$325. Estimate \$150 - 200



- 490 ★★田 **Hunting Permit, 1975, \$5 Canvas-backs (Scott RW42)**, plate block of 4, perfectly centered, o.g., never hinged, Extremely Fine and choice. Scott \$65. Estimate \$40 - 60



- 491 ★★田 **Hunting Permit, 1980, \$7.50 Mallards (Scott RW47)**, plate block of 4, immaculate and perfectly centered, o.g., never hinged, Extremely Fine and choice. Scott \$55. Estimate \$35 - 50

Misc. Back-of-the-Book



- 492 ★★/★田 Postal Savings, 1940, 25¢ dark carmine rose (Scott PS8), plate block of 6, fresh and attractive, o.g., 2 stamps never hinged, Fine to Very Fine, seldom offered. Scott \$220. Estimate \$100 - 150



- 493 P Sanitary Fair, Philadelphia, Pa., 1864, 20¢ carmine, trial color proof on wove, perf'd (Scott WV12TC), intriguing example of this elusive used Philadelphia fair issue, equally balanced margins with a sharp and bold impression, unused without gum; short perforation at top, Fine to Very Fine, ex-Steele, Kantor. Estimate \$100 - 150



- 494 ★★ Test Stamp, 1944-49, Multipost Commercial Controls coil, blue (Scott TD88), pair, o.g., never hinged, Very Fine to Extremely Fine. Scott \$45. Estimate \$30 - 40

Collections and Groups

- 495 ★★/★ 1847-1959, mint collection balance, including #s 10X1, 26, 36, 76, 157, 209-211, 215, 222 pair, 261A, 285, 286 x 2, 286 plate # pair, 287, 294, 296 x 2, 301, 303, 323-327, 397-400A, 534 PB, 535 PB, 620, 834, 1288 misperf, 1394 misperf, 1520 misperf, BKC1, C1-C6, C3, C25-C31, E6, F1, J25, Q3, RW1, RW5, RW9, RW14, RW21, RW26. Mainly sound stamps, o.g., some never hinged / some hinged, generally Fine to Very Fine, a few just Fine. Scott \$11,000+. Estimate \$1,200 - 1,800



- 496 ★ 1852-67, 3¢ group of 5 (Scott 11A, 65, 94), a select group of inexpensive but interesting stamps, note the Jersey Shore, Pa. fancy cancel on a #65 and the light grid cancel on the #94 F. Grill; the two #65's have huge margins - definitely premium examples (the photo shows them in Scott order), Very Fine to Extremely Fine. Estimate \$50 - 75

- 497 ○ 1857-94, used collection balance, 19 different stamps, including #s 31, 35, 68, 78b, 91, 93, 100, 113, 114, 117, 123, 149, 150, 151, 152, 160, 165, 218 and 260, all are fresh with nice cancels, generally Fine to Very Fine, a few are Very Fine, a few just Fine. Scott \$5,040. Estimate \$600 - 800



- 498** ○ **1870-75, Bank Note Issues, group of 7 different, 1¢ to 15¢ (Scott 145//179)**, a select group of fresh, mostly well centered examples, including N.B.N.C. 1¢, 6¢, 10¢ and 15¢ (145, 148, 150, 152); and C.B.N.C. 5¢, 6¢ and 10¢ (179, 159, 161), Fine to Very Fine.
Scott \$356. Estimate \$150 - 200



- 499** P **1873-82, Bank Note Issues, group of 7 different plate proofs on card, 1¢ to 15¢ (Scott 160P4//207P4)**, including 160P4, 162P4, 163P4, 183P4, 185P4, 206P4, 207P4, most with large margins, generally Very Fine, 20, 20, 20, 25, 25, 20, 20.
Scott \$150. Estimate \$50 - 75

- 500** ★★/★/○ **1890-98, group of 15 mostly different, 1¢ to 15¢ (Scott 219//286)**, includes 219 LH, 230 LH, 231 NH, 232 and 233 (each NH with SE, catalogs \$97.50 and \$140), 231 used, 232 x2 used, 264 NH, 274 used, 279 HR, 280 NH (catalogs \$80), 285 HR, 285 NH plate #, 286 VLH, o.g., some never hinged / some hinged, generally Fine to Very Fine or better.
Scott \$592. Estimate \$120 - 150

- 501** ★★/★ **1901-13, balance lot of interesting items (Scott 294//398)**, including 294 strip of 3 VLH, 295 VLH, 296 VLH, 301 VLH, 302 VLH, 303 used, 304 VLH, 314 pair NH and pair used, 319 NH, 320 (2 singles NH and 2 pairs NH), 324 NH, 324 VLH, 372 NH, 373 NH x 2, 390 NH, 391 NH, 397 NH x 2, 398 NH x 2 (1 with SE), mostly well centered, o.g., some never hinged / some hinged, generally Very Fine, a nice balance lot with meat in it.
Scott \$999. Estimate \$250 - 350

- 502** ★★/★ **1910-17, Washington-Franklins, small select quality group of 9 different, 1¢ to 10¢ (Scott 383//510)**, including 383 pair, 384 pair, 390, 410 LH, 411, 495 pair, 503, 506 LH and 510, a fresh and well centered group, o.g., mostly never hinged / two lightly hinged, Very Fine.
Scott \$130. Estimate \$50 - 75

- 503** ★/○ **1919-32, small group of select quality stamps (Scott 537//721)**, including #s 537 NH VF, 555 (superb NH jumbo but with a tiny perf indent on gum), 563 used, 567 x 2 NH, 573 x 2 used XF, 581 x 3 NH VF, 603 NH PR, 604 NH LP, 611 NH B4, 612 used pair, 638 NH plate #, 639 NH plate #, 642 NH plate #, 686 NH LP, 702 NH B4 and 721 NH line strip of 4, o.g., never hinged, Very Fine to Extremely Fine, with a few Superb.
Scott \$311. Estimate \$100 - 150

- 504** ★★/★ **Airmail and Back-of-the-Book, 1901-31, small group of select quality items**, including #s C8 NH, C9 x5 NH, C12 x4 NH, C16 NH, C16 PB NH, C17 PB NH, J39 x 3 NH, J70 NH, J71 NH, J73 x2 NH, CZ 93 hinged - not counted, Cuba 223A NH, o.g., all never hinged except the one cheap CZ stamp, generally Very Fine.
Scott \$533. Estimate \$150 - 200

Confederate States



505 ○ **Confederacy, Charleston, S.C., 1861, 5¢ blue (Scott 16X1)**, fresh and affordable example of this scarce postmaster provisional issue, light black cancellation at bottom right; faults, otherwise Fine to Very Fine. Scott \$800 for faulty (per Scott). Estimate \$200 - 300



506 ○ **Confederacy, New Orleans, La., 1861, 5¢ brown (Scott 62X3)**, large margins all around, a superlative example of this provisional issue, neat cancel, Very Fine to Extremely Fine. Scott \$200. Estimate \$150 - 200



507 (★) **Confederacy, 1861, 10¢ light milky blue (Scott 2e)**, huge margins all around, unused without gum; a thick spot of the remains of the original gum shows faintly at top right on the face, Very Fine overall. Scott \$700. Estimate \$400 - 600



508 ★★ **Confederacy, 1863, 2¢ brown red (Scott 8)**, a spectacular one-in-a-million gem, extremely well centered and with parts of 8 surrounding stamps, o.g., never hinged, Superb; with 2015 P.S.E. certificate graded Gem 100J. SMQ \$1,250 without the jumbo. Estimate \$1,000 - 1,500



509 ★★田 **Confederacy, 1863, 10¢ blue (Scott 11)**, block of 4, huge margins all around, full o.g., never hinged, Extremely Fine and choice. Scott \$85 as hinged. Estimate \$100 - 150



510 ○ **Confederacy, 1863, 10¢ blue (Scott 11)**, large margins all around including wide sheet margin at top, spectacular example, neat Virginia town postmark, Extremely Fine to Superb; with 2013 P.S.E. certificate graded XF-SUP 95. Scott \$20. SMQ \$85. Estimate \$100 - 150



- 511 ★★ **Confederacy, 1863, 20¢ green (Scott 13)**, a spectacular gem for the most demanding connoisseur, perfectly centered and with parts of 8 surrounding stamps, o.g., never hinged, Superb; with 2019 P.S.E. certificate graded Gem 100J. SMQ \$750 without the jumbo. Estimate \$500 - 750



- 512 ★★ **Confederacy, 1863, 20¢ green (Scott 13)**, outstandingly well centered within oversized margins, bright fresh color, o.g., never hinged, Extremely Fine to Superb, a gem. Scott \$45 as hinged. Estimate \$100 - 150



- 513 ★ **Confederacy, 1862, 1¢ orange, unissued (Scott 14)**, traces of o.g., Very Fine. Scott \$110. Estimate \$40 - 60

U.S. Possessions



- 514 ★田 **Canal Zone, 1904, 10c yellow, "PANAMA" close together (Scott 13 var.)**, dark carmine overprint, positions 5-6, 15-16, top margin block of 4, two with "PANAMA" close together, reading down and up variety, small part o.g., Very Fine, *it is estimated that only 10,000 copies were printed.* Scott \$100 +++. CZSG 13.17.

Estimate \$100 - 150



- 515 ★★ **Canal Zone, 1928, 14¢ dark blue, sharp "A" (Scott 89)**, a magnificent gem example, perfectly centered within large margins, and with deep rich color, o.g., never hinged, Superb. Scott \$45. Estimate \$50 - 75



- 516 ★★/★ **Cuba, 1899, 5c on 5¢ blue (Scott 225)**, rich color and impression, nicely centered, o.g., hinge remnant on middle stamp (2 stamps never hinged), Very Fine. Scott \$190. Estimate \$75 - 100



- 517 ★★ **Cuba, 1899, 5c on 5¢ blue (Scott 225)**, plate number and imprint strip of 3, deep color and impression, o.g., never hinged (scarce thus!), Fine.
Scott \$190 as hinged. Estimate \$100 - 150



- 518 ★ **Danish West Indies, 1874, 3¢ light blue & rose carmine, thin paper, inverted frame (Scott 6f)**, fresh color, attractive, o.g., hinge remnant, almost Very Fine.
Scott \$350. Estimate \$150 - 200



- 519 ○ **Danish West Indies, 1874, 3¢ light blue & rose carmine, thin paper, inverted frame (Scott 6f)**, lightly canceled, not priced used in Scott.
Scott \$350 as mint. Estimate \$100 - 150



- 520 ★★ **Hawaii, 1894, 12¢ blue (Scott 78)**, perfectly centered, flawless in every respect, o.g., never hinged, Superb.
Scott \$43. Estimate \$75 - 100





- 521 ★★ **Hawaii, 1894, 12¢ blue (Scott 78)**, beautifully well centered, o.g., never hinged, Extremely Fine to Superb.
Scott \$43. Estimate \$60 - 80



- 522 ★✉ **Hawaii, Paid Reply Postal Card, 1883, 2¢+2¢ dark blue (Scott UY2)**, unsevered but folded, Very Fine.
Scott \$450. Estimate \$50 - 75





523  **Ryukyus, Air Letter Sheet, 1958, 13¢ surcharge type “c” on 15y violet blue & bright red on pale yellow green, “¢” sign small, in wrong font (Scott UC3d), “c” is 2 mm high instead of the normal 2.5 mm, an immaculate unused entire, Extremely Fine, a rare item that is one of the key pieces in Ryukyus philately.**
 Scott \$1,400. Estimate \$800 - 1,200

525  **Ryukyus, Summer Greeting Postal Card, 1970, 1½¢ Litchis, black printing omitted, reverse shows “Grey Hull” variety (Scott UX38), Very Fine. UPSS S46a; \$500.**

Estimate \$150 - 200



524  **Ryukyus, Postal Card, 1951, 15s+85s orange red on gray (Scott UX4b), flawless mint, Extremely Fine.**
 Scott \$75. Estimate \$50 - 75

526  **Ryukyus, Paid Reply Postal Card, 1949, 15s+15s vermillion on gray (Scott UY2a), unsevered, mint, Very Fine.**
 Scott \$75. Estimate \$40 - 60



527 ★✉ **Ryukyus, Paid Reply Postal Card, 1951, 85s handstamped surcharge type "d" on 15s vermilion on tan, message card (Scott UY4j), pristine mint, Very Fine.**
 Scott \$150. Estimate \$75 - 100

529 ★✉ **Ryukyus, Election Postal Card, 1957, 2y 18th District Special Election (Scott UZE12), mint, Very Fine.**
 Scott \$175. J.S.C.A. EC11; 20,000 yen (\$180).
 Estimate \$75 - 100



528 ★✉ **Ryukyus, Paid Reply Postal Card, 1958, 1½¢ surcharge on 2y+2y green (Scott UY11 var.), unsevered, tall "2" on message card (2.7 v 2.5 mm), reply card "1" of "1/2" shifted to the right, Very Fine. UPSS MR11h. Estimate \$50 - 75**

Interested in consigning your collection ?

Contact us today to see how
we can help you.

Our team of specialists will assist you in determining your collection's value and send you a proposal of how we can help you meet your goals.

Golden Oak Online Auctions can coordinate a pickup at your location or you can take your packages to FedEx and send your items to us fully insured on our account. Prior to the auction you will receive a list of all lots that have been consigned by you via email. After the auction, you will be notified of the results of sale again via email. Assuming that payment has been made to GOOA for all the property that sold, we will send the net proceeds (the hammer price of each lot less commission and any other agreed upon fees) 45 days after the auction.



Golden
Oak | Online
Auctions

3824 cedar springs road #801-6372
dallas, tx 75219 · usa
469.437.7658 · selling@gooaucs.com