

Auction 26  
July 9, 2020  
Online Only

United States Stamps



Golden  
Oak | Online  
Auctions

# Interested in consigning your collection ?

Contact us today to see how  
we can help you.

Our team of specialists will assist you in determining your collection's value and send you a proposal of how we can help you meet your goals.

Golden Oak Online Auctions can coordinate a pickup at your location or you can take your packages to FedEx and send your items to us fully insured on our account. Prior to the auction you will receive a list of all lots that have been consigned by you via email. After the auction, you will be notified of the results of sale again via email. Assuming that payment has been made to GOOA for all the property that sold, we will send the net proceeds (the hammer price of each lot less commission and any other agreed upon fees) 45 business days after the auction.



Golden  
Oak | Online  
Auctions

3824 cedar springs road #801-6372  
dallas, tx 75219 · usa  
469.491.7932 · [selling@gooaucs.com](mailto:selling@gooaucs.com)

## U.S. Stamps

### 1845-1869 Issues



- 1 (★) **Providence, R.I., 1898 reprint, 5¢ gray black (Scott 10X1)**, well centered within large margins, without gum as issued, Extremely Fine. Scott \$65. Estimate \$40 - 60



- 2 ○ **1852, 1¢ blue, type IV (Scott 9)**, large margins all around showing type characteristics clearly, very lightly canceled, Extremely Fine. Scott \$90. Estimate \$100 - 150



- 3 ○ **1855, 10¢ green, type II (Scott 14)**, intense color and impression amid luxurious margins; a gorgeous used example, black c.d.s., Extremely Fine and choice. Scott \$140. Estimate \$150 - 200



- 4 ★ **1857, 1¢ blue, type V (Scott 24)**, extraordinarily well centered, o.g., lightly hinged, Extremely Fine. Scott \$140. Estimate \$150 - 200



- 5 (★) **1857, 3¢ dull red, type III (Scott 26)**, nicely centered for this issue, unused without gum, Very Fine. Scott \$28. Estimate \$30 - 40



- 6 ○ **1857, 10¢ green, type I (Scott 31)**, nicely centered for this issue, town cancel, almost Very Fine. Scott \$1,100. Estimate \$400 - 600



- 7 ○ **1861, 1¢ blue (Scott 63)**, exceptionally well centered, light c.d.s., Very Fine to Extremely Fine. Scott \$45. Estimate \$40 - 60



- 8 ○ **1861, 3¢ rose (Scott 65)**, gorgeous, full strike of Alexandria, VA fancy shield in circular frame, Extremely Fine. Skinner-Eno PS-FC 24. Estimate \$100 - 150



9 ○ **1861, 10¢ yellow green (Scott 68)**, beautifully fresh and well centered, very lightly canceled, Extremely Fine. Scott \$55. Estimate \$40 - 60



13 ○ **1863, 5¢ brown (Scott 76)**, fresh and well centered, a beauty, neat light Mobile, Ala. town cancel, Very Fine. Scott \$120. Estimate \$75 - 100



10 ○ **1861, 10¢ yellow green (Scott 68)**, bright and fresh, cork cancel, Fine to Very Fine. Scott \$55. Estimate \$30 - 40



14 ○ **1863, 24¢ grayish lilac (Scott 78a)**, extraordinarily well centered for this very difficult issue, neat blue target cancel, Very Fine. Scott \$437. Estimate \$300 - 400



11 ○ **1861, 12¢ black (Scott 69)**, fresh and well centered, light target cancel, Very Fine. Scott \$95. Estimate \$60 - 80



15 ○ **1863, 24¢ gray (Scott 78b)**, nicely centered, almost Very Fine. Scott \$450. Estimate \$200 - 300



12 ○ **1863, 2¢ black (Scott 73)**, unusually well centered, lightly canceled, Very Fine. Scott \$55. Estimate \$40 - 60



16 ○ **1867, 10¢ green, E. grill (Scott 89)**, neat circle-of-wedges cancel, Very Fine. Scott \$325. Estimate \$150 - 200



- 17 ★★ 1869, 3¢ ultramarine (Scott 114), bright fresh color, o.g., never hinged, Fine to Very Fine, very scarce never hinged. Scott \$225 as hinged. Estimate \$250 - 350



- 18 ○ 1869, 24¢ green & violet (Scott 120), an extraordinarily choice example, with magnificent centering, large margins and bright fresh color, fairly light cancel, Extremely Fine, *very rare this nice*; with 2019 P.S.A.G. certificate graded XF 90. Scott \$600. SMQ \$1,850. Estimate \$800 - 1,200



- 19 ○ 1869 (1875 Re-issue), 1¢ buff (Scott 123), bright and fresh, New York registry cancel, Fine to Very Fine. Scott \$425. Estimate \$150 - 200



- 20 ○ 1869 (1880 Re-issue), 1¢ buff (Scott 133), nicely centered, fresh, New York cancel, Very Fine. Scott \$550. Estimate \$350 - 500

**1870-1888 Issues**



- 21 ○ 1871, 7¢ vermilion (Scott 149), lightly struck red cancels, Fine to Very Fine. Scott \$100. Estimate \$40 - 60



- 22 ○ 1870, 12¢ dull violet (Scott 151), nicely centered, almost Very Fine. Scott \$200. Estimate \$75 - 100



- 23 ○ 1870, 15¢ bright orange (Scott 152), exceptionally well centered, duplex cancel, Very Fine to Extremely Fine. Scott \$210. Estimate \$150 - 200



- 24 ○ 1870, 24¢ purple (Scott 153), well centered, neat light circle-of-wedges cancel, Very Fine. Scott \$210. Estimate \$100 - 150



25 ○ **1870, 30¢ black (Scott 154)**, beautifully well centered, lightly canceled, Very Fine to Extremely Fine.  
Scott \$275. Estimate \$200 - 300



29 ○ **1873, 7¢ orange vermilion (Scott 160)**, neat New York Foreign Mail cancel, Fine to Very Fine.  
Scott \$85. Estimate \$35 - 50



26 ★★ **1873, 2¢ brown (Scott 157)**, rich intense color on brilliant white paper, o.g., never hinged (rare thus!), Fine.  
Scott \$325 as hinged. Estimate \$250 - 350



30 ○ **1873, 30¢ gray black (Scott 165)**, well centered, light grid cancel, Very Fine.  
Scott \$135. Estimate \$75 - 100



27 ★★ **1873, 3¢ green (Scott 158)**, a lovely example, beautifully well centered and with bright fresh color, o.g., never hinged, Very Fine to Extremely Fine, genuinely never hinged examples of this classic issue are very scarce; with photocopy of 2014 P.S.E. certificate for block.  
Scott \$110 as hinged. Estimate \$350 - 500



31 ○ **1882, 5¢ yellow brown (Scott 205)**, an incredible one-in-a-million jumbo, perfectly centered within immense margins, spectacularly choice, duplex cancel, Superb.  
Scott \$15. Estimate \$200 - 300



28 ★★ **1873, 3¢ green (Scott 158)**, attractive fresh color, o.g., never hinged (!), Fine to Very Fine; with photocopy of 2018 P.F. certificate for block.  
Scott \$110 as hinged. Estimate \$120 - 150



32 ★ **1882, 10¢ brown, re-engraved (Scott 209)**, fresh and well centered, o.g., hinged, almost Very Fine.  
Scott \$160. Estimate \$60 - 80



**33** ★ **1883, 2¢ red brown (Scott 210)**, fresh and beautifully well centered, o.g., lightly hinged, Very Fine.  
Scott \$45. Estimate \$30 - 40



**37** ★★ **1887, 3¢ vermilion (Scott 214)**, lovely fresh color, o.g., never hinged, Fine to Very Fine; with photocopy of 2018 P.F. certificate for block.  
Scott \$180. Estimate \$60 - 80



**34** ★★ **1883, 4¢ blue green (Scott 211)**, lovely fresh color, o.g., never hinged, Fine to Very Fine; with 2018 P.F. certificate.  
Scott \$800. Estimate \$250 - 350



**38** ★ **1887, 3¢ vermilion (Scott 214)**, fresh and well centered, o.g., lightly hinged, Very Fine; with photocopy of 2018 P.F. certificate for block.  
Scott \$60. Estimate \$30 - 40



**35** ★★ **1887, 2¢ green (Scott 213)**, fresh color and choice centering amid large margins, o.g., never hinged, an Extremely Fine gem.  
Scott \$120. Estimate \$150 - 200



**39** ○ **1888, 90¢ purple (Scott 218)**, well centered, New York oval cancels, Very Fine.  
Scott \$225. Estimate \$100 - 150



**36** ★★ **1887, 3¢ vermilion (Scott 214)**, fresh bright color and choice centering, o.g., never hinged, Very Fine.  
Scott \$180. Estimate \$150 - 200

**1890-1898 Issues**



40 P田 **1890, 2¢ lake, plate proof on India (Scott 219DP3)**, block of 4, Very Fine. Scott \$385. Estimate \$200 - 300



41 ★★ **1890, 2¢ carmine (Scott 220)**, o.g., never hinged, Fine to Very Fine. Scott \$60. Estimate \$20 - 30



42 ★★ **1890, 2¢ carmine, cap on left “2” variety (Scott 220a)**, bright fresh color, o.g., never hinged, Fine; with photocopy of 2019 P.F. certificate for block. Scott \$425. Estimate \$150 - 200



43 ○ **1890, 2¢ carmine, cap on left “2” variety (Scott 220a)**, a truly magnificent example, just about perfectly centered, a gem for the most demanding connoisseur, very lightly canceled, Extremely Fine. Scott \$13. Estimate \$40 - 60



44 ★★ **1890, 6¢ brown red (Scott 224)**, fresh and nicely centered, o.g., never hinged, Very Fine. Scott \$160. Estimate \$100 - 150



45 ★★ **1890, 6¢ brown red (Scott 224)**, fresh and nicely centered, o.g., never hinged, almost Very Fine. Scott \$160. Estimate \$75 - 100



46 ★ **1893, Columbian, 1¢ deep blue (Scott 230)**, a gorgeous gem, perfectly centered within large margins, o.g., lightly hinged, Superb. Scott \$14. Estimate \$30 - 40



47 ★★ **1893, Columbian, 2¢ brown violet (Scott 231)**, a magnificent gem, perfectly centered within jumbo margins and with brilliant fresh color, o.g., never hinged, Extremely Fine; with 2018 P.S.E. certificate graded XF 90J. Scott \$31. SMQ \$225. Estimate \$150 - 200





48 ★★ 1893, Columbian, 2¢ brown violet, “broken hat” variety (Scott 231 var.), fresh and well centered, a lovely choice example, o.g., never hinged, Very Fine; with photocopy of 2019 P.F. certificate for block. Scott \$160. Estimate \$75 - 100



49 ★★ 1893, Columbian, 2¢ brown violet, “broken hat” variety (Scott 231 var.), lovely fresh color, o.g., never hinged, Fine to Very Fine; with photocopy of 2019 P.F. certificate for block. Scott \$160. Estimate \$60 - 80



50 ★★ 1893, Columbian, 3¢ green (Scott 232), an outstanding gorgeous gem featuring huge margins and near perfect centering, o.g., never hinged, Extremely Fine to Superb. Scott \$98. Estimate \$150 - 200



51 ★ 1893, Columbian, 3¢ green (Scott 232), well centered within oversized margins, a lovely jumbo, o.g., lightly hinged, Very Fine. Scott \$35. Estimate \$30 - 40



52 ★★ 1893, Columbian, 4¢ ultramarine (Scott 233), o.g., never hinged, Fine to Very Fine. Scott \$140. Estimate \$60 - 80



53 ★ 1893, Columbian, 4¢ ultramarine (Scott 233), premium centering, a beautiful stamp, o.g., barest trace of hinge (you have to stare at the gum to see the faint trace of a hinge mark), Extremely Fine. Scott \$50. Estimate \$50 - 75



54 ★ 1893, Columbian, 4¢ ultramarine (Scott 233), o.g., lightly hinged, Fine to Very Fine. Scott \$50. Estimate \$30 - 40



55 ★★ 1893, Columbian, 5¢ chocolate (Scott 234), beautifully well centered within large margins, o.g., never hinged, Very Fine. Scott \$140. Estimate \$75 - 100



56 ★ 1893, Columbian, 5¢ chocolate (Scott 234), lovely centering, o.g., lightly hinged, Very Fine. Scott \$50. Estimate \$30 - 40



60 ★ 1893, Columbian, 8¢ magenta (Scott 236), part imprint single, beautifully centered, o.g., hinged, Very Fine. Scott \$48. Estimate \$40 - 60



57 ★★ 1893, Columbian, 8¢ magenta (Scott 236), an especially handsome example, well centered and very fresh, o.g., never hinged, Very Fine to Extremely Fine. Scott \$140. Estimate \$120 - 150



61 ★★ 1893, Columbian, 10¢ black brown (Scott 237), lovely centering and color, o.g., never hinged, Very Fine. Scott \$250. Estimate \$150 - 200



58 ★★ 1893, Columbian, 8¢ magenta (Scott 236), fresh and well centered, a premium example, o.g., never hinged, Very Fine; with photocopy of 2018 P.F. certificate for block. Scott \$140. Estimate \$75 - 100



62 ★ 1893, Columbian, 10¢ black brown (Scott 237), exceptionally well centered, o.g., lightly hinged, Very Fine. Scott \$90. Estimate \$60 - 80



59 ★★ 1893, Columbian, 8¢ magenta (Scott 236), lovely fresh color, o.g., never hinged, Fine to Very Fine. Scott \$140. Estimate \$60 - 80



63 ○ 1893, Columbian, 15¢ dark green (Scott 238), a perfectly centered gem, neat duplex cancel, Extremely Fine and choice. Scott \$73. Estimate \$75 - 100



- 64 ○ **1893, Columbian, \$2 brown red (Scott 242)**, fresh and well centered, light registry cancel, Very Fine, a premium example of this popular high value; with 1995 P.F. certificate.  
Scott \$525. Estimate \$300 - 400



- 67 ★★ **1894, 2¢ pink, type I (Scott 248)**, nicely centered with bright fresh color, o.g., never hinged, almost Very Fine; with photocopy of 2019 P.F. certificate for block.  
Scott \$90. Estimate \$50 - 75



- 65 ★★田 **1894, 1¢ ultramarine (Scott 246)**, plate block of 6, fresh and attractively centered, o.g., never hinged, almost Very Fine.  
Scott \$1,000. Estimate \$500 - 750



- 68 ★ **1894, 10¢ dark green (Scott 258)**, nice centering and color, large part o.g., Fine to Very Fine.  
Scott \$275. Estimate \$60 - 80



- 69 ★★ **1894, 50¢ orange (Scott 260)**, fresh bright color, o.g., never hinged (tiny gum skip), almost Very Fine.  
Scott \$1,425. Estimate \$750 - 1,000



- 66 P田 **1894, 1¢ blue, plate proof on card (Scott 247P4)**, corner margin block of 4, Extremely Fine.  
Scott \$450. Estimate \$300 - 400



- 70 ○ **1894, 50¢ orange (Scott 260)**, Fine to Very Fine.  
Scott \$140. Estimate \$60 - 80



- 71 ★★ **1895, 1¢ blue (Scott 264)**, a superlative example, beautifully well centered, o.g., never hinged, Extremely Fine and choice; with photocopy of 2019 P.F. certificate for block.  
Scott \$18. Estimate \$30 - 40

- 74 ★★ **1898, 5¢ dark blue (Scott 281)**, part imprint single, lovely centering that is close to perfection, o.g., never hinged, Extremely Fine.  
Scott \$100. Estimate \$100 - 150



- 72 ★★ **1895, 5¢ chocolate (Scott 270)**, plate number and imprint strip of 3, a lovely fresh strip, o.g., never hinged, Fine to Very Fine; with 2019 P.F. certificate.  
Scott \$375. Estimate \$150 - 200

- 75 ★★ **1898, Trans-Miss., 1¢ dark yellow green (Scott 285)**, mathematically perfect centering, wow - what a stamp! o.g., never hinged, Extremely Fine to Superb.  
Scott \$83. Estimate \$100 - 150



- 73 ★★ **1898, 5¢ dark blue (Scott 281)**, plate number single, extraordinarily well centered, a gem, o.g., never hinged, Extremely Fine.  
Scott \$100. Estimate \$100 - 150

- 76 ★★ **1898, Trans-Miss., 1¢ dark yellow green (Scott 285)**, beautifully well centered with deep rich color, o.g., never hinged, Very Fine to Extremely Fine.  
Scott \$83. Estimate \$60 - 80



- 77 ★★ **1898, Trans-Miss., 1¢ dark yellow green (Scott 285)**, an impressive example with excellent centering and color, o.g., never hinged, Very Fine to Extremely Fine.  
Scott \$70. Estimate \$50 - 75



- 78 ★ **1898, Trans-Miss., 4¢ orange (Scott 287)**, fresh and exceptionally well centered, o.g., very lightly hinged, Very Fine to Extremely Fine.  
Scott \$110. Estimate \$75 - 100



- 81 ★★ **1901, Pan-American, 4¢ deep red brown & black (Scott 296)**, unusually well centered, with bright fresh color, o.g., never hinged, Very Fine.  
Scott \$170. Estimate \$100 - 150



- 79 ★ **1898, Trans-Miss., 10¢ gray violet (Scott 290)**, fresh color and attractive centering, o.g., hinged, almost Very Fine.  
Scott \$140. Estimate \$60 - 80



- 82 ★ **1901, Pan-American, 4¢ deep red brown & black (Scott 296)**, crisp color with detailed impression amid even margins, o.g., hinged, Very Fine to Extremely Fine.  
Scott \$70. Estimate \$50 - 75

**1901-1907 Issues**



- 80 ★ **1901, Pan-American, 1¢, 2¢ and 4¢, each with strongly shifted vignette (Scott 294-296 vars.)**, o.g., hinged, Fine to Very Fine.  
Scott \$101 as normal. Estimate \$100 - 150



- 83 ★★ **1901, Pan-American, 5¢ ultramarine & black (Scott 297)**, beautifully well centered within ample margins, and with bright fresh color, o.g., never hinged, Extremely Fine and choice; with photocopy of 2016 P.F. certificate for block.  
Scott \$180. Estimate \$150 - 200



- 84 ★★ **1901, Pan-American, 5¢ ultramarine & black (Scott 297)**, a beautiful example featuring near perfect centering and bright fresh color, o.g., never hinged, Very Fine to Extremely Fine; with photocopy of 2016 P.F. certificate for block.  
Scott \$180. Estimate \$120 - 150



**85**    ★★    **1901, Pan-American, 10¢ yellow brown & black (Scott 299)**, an impressive premium example, uncommonly well centered and with bright fresh color, o.g., never hinged, Very Fine; with 2017 P.F. certificate graded VF 80. Scott \$300. SMQ \$350.    Estimate \$250 - 350



**86**    ★★    **1903, 1¢ blue green (Scott 300)**, a beautiful part imprint single, well centered within uncommonly large margins, o.g., never hinged, an Extremely Fine jumbo. Scott \$30.    Estimate \$75 - 100



**87**    ★★    **1903, 1¢ blue green (Scott 300b)**, booklet pane of 6, o.g., never hinged, Fine. Scott \$1,150.    Estimate \$350 - 500



**88**    ★★    **1903, 2¢ carmine (Scott 301c)**, booklet pane of 6, fresh, o.g., never hinged, Fine to Very Fine. Scott \$950.    Estimate \$400 - 600



**89**    ★★田    **1903, 10¢ pale red brown (Scott 307)**, block of 4, fresh, nicely centered, o.g., never hinged, almost Very Fine. Scott \$600.    Estimate \$300 - 400



**90**    ★    **1903, 50¢ orange (Scott 310)**, bright fresh color, o.g., hinged, Fine to Very Fine. Scott \$400.    Estimate \$150 - 200



- 91 ○ 1903, 50¢ orange (Scott 310), neat New York registry cancel, Superb. Scott \$35. Estimate \$75 - 100



- 92 ★ 1903, \$2 dark blue (Scott 312), deep radiant color on white paper, o.g., hinged, Fine. Scott \$800. Estimate \$300 - 400



- 93 ○ 1903, \$2 dark blue (Scott 312), fresh and well centered, very lightly canceled, Very Fine to Extremely Fine. Scott \$190. Estimate \$100 - 150



- 94 ★★ 1906, 1¢ blue green, imperf (Scott 314), pair, perfectly centered within margins that are unusually large, o.g., never hinged, Extremely Fine to Superb. Scott \$60. Estimate \$75 - 100



- 95 ★★ 1906, 1¢ blue green, imperf (Scott 314), pair, large margins all around, a beautiful position piece, o.g., never hinged, Extremely Fine and choice. Scott \$60. Estimate \$60 - 80



- 96 ★★ 1906, 1¢ blue green, imperf (Scott 314), pair, choice centering amid large margins, o.g., never hinged, Extremely Fine. Scott \$60. Estimate \$50 - 75



- 97 ★★ 1906, 1¢ blue green, Schermack type III perfs (Scott 314), strip of 4, o.g., never hinged. Scott \$50 as hinged. Estimate \$40 - 60



- 98 ★★ 1903, 2¢ carmine, type I (Scott 319), mathematically perfect centering, great color, o.g., never hinged, Superb. Scott \$15. Estimate \$75 - 100



- 99 ★★ 1903, 2¢ lake, type II (Scott 319F), magnificent centering and intense color, o.g., never hinged, Extremely Fine. Scott \$25. Estimate \$40 - 60



- 103 ★★ 1904, 1¢ Louisiana Purchase (Scott 323), fresh and well centered, o.g., never hinged, Very Fine; with 2019 P.F. certificate for block. Scott \$60. Estimate \$30 - 40



- 100 ★★ 1906, 2¢ carmine, imperf, type I (Scott 320), pair, large even margins, o.g., never hinged, Extremely Fine. Scott \$70. Estimate \$50 - 75



- 104 ★★ 1904, 3¢ Louisiana Purchase (Scott 325), well centered, very bright and fresh, o.g., never hinged, Very Fine. Scott \$170. Estimate \$120 - 150



- 101 ○ 1906, 2¢ carmine, imperf, type I (Scott 320), pair, rich color, well centered within large margins, neat cancel, Extremely Fine. Scott \$43. Estimate \$40 - 60



- 105 ★★ 1904, 3¢ Louisiana Purchase (Scott 325), attractive, o.g., never hinged, almost Very Fine. Scott \$170. Estimate \$75 - 100



- 102 ○ 1906, 2¢ carmine, imperf, type I (Scott 320), pair, a superlative pair, very lightly canceled, Extremely Fine. Scott \$43. Estimate \$40 - 60



- 106 ○ 1904, 5¢ Louisiana Purchase (Scott 326), gorgeous centering, faint cancel, Extremely Fine. Scott \$23. Estimate \$40 - 60





107 ★ 1904, 10¢ Louisiana Purchase (Scott 327), a handsome well centered example with bright fresh color, o.g., lightly hinged, Very Fine; with 2018 P.F. certificate graded VF 80. Scott \$125. SMQ \$130. Estimate \$100 - 150



110 ★★田 1907, 2¢ Jamestown (Scott 329), plate block of 6, unusually well centered for this tight margined issue, o.g., never hinged, Very Fine and choice. Scott \$900. Estimate \$600 - 800



108 ★ 1907, Jamestown complete (Scott 328-330), an attractive well centered set, all with fresh colors, o.g., lightly hinged, Very Fine. Scott \$178. Estimate \$120 - 150



111 ★★ 1907, 5¢ Jamestown (Scott 330), well centered for this issue, o.g., never hinged, almost Very Fine. Scott \$350. Estimate \$200 - 300



109 ★★ 1907, 1¢ Jamestown (Scott 328), exceptionally well centered for this very difficult issue, o.g., never hinged, Very Fine to Extremely Fine. Scott \$70. Estimate \$60 - 80

**1908-1911 Issues**



- 112** ★★ **1908, 1¢ green (Scott 331)**, imprint pair, well centered within uncommonly large margins, o.g., never hinged, Very Fine. Scott \$32+. Estimate \$30 - 40



- 113** ★★ **1908, 2¢ carmine (Scott 332)**, near perfect centering, a gorgeous gem, o.g., never hinged, Extremely Fine to Superb. Scott \$14. Estimate \$40 - 60



- 114** ★★ **1908, 2¢ carmine (Scott 332)**, a gorgeous part imprint single with huge margins, extraordinarily choice, o.g., never hinged, Extremely Fine. Scott \$14. Estimate \$40 - 60



- 115** ★★田 **1908, 2¢ carmine (Scott 332)**, plate block of 6, a handsome plate block, fresh and well centered, o.g., never hinged, Very Fine. Scott \$150. Estimate \$150 - 200



- 116** ★★/★田 **1908, 4¢ orange brown (Scott 334)**, plate block of 6, well centered throughout, a beautiful plate block, o.g., lightly hinged at top, never hinged at bottom, Very Fine to Extremely Fine. Scott \$450. Estimate \$400 - 600



- 117 ★★/★田 1909, 6¢ red orange (Scott 336), plate block of 6, fresh bright color, o.g., 2 center stamps hinged, other 4 never hinged, Fine to Very Fine. Scott \$750. Estimate \$350 - 500



- 118 ★★ 1909, 13¢ blue green (Scott 339), beautifully well centered with lovely fresh color, o.g., never hinged, Very Fine. Scott \$90. Estimate \$60 - 80



- 119 ○ 1909, \$1 violet brown (Scott 342), exceptionally well centered, a gem used example, barely canceled (appears unused), Very Fine. Scott \$90. Estimate \$75 - 100



- 120 ★★ 1908, 1¢ to 4¢, imperf (Scott 343-346), a gorgeous set, the 1¢ is a plate number single, o.g., never hinged, Extremely Fine and choice, *very difficult to assemble*. Scott \$62. Estimate \$75 - 100



- 121 ★★ 1908, 1¢ to 4¢, imperf (Scott 343-346), horizontal pairs, a select set, each pair being well centered and fresh, o.g., never hinged, Extremely Fine and choice. Scott \$124. Estimate \$150 - 200



- 122 ○ 1909, 5¢ blue, imperf (Scott 347), perfectly centered wide margins large margins, lightly canceled, Extremely Fine and choice. Scott \$33. Estimate \$50 - 75



- 123** ★ **1909, 2¢ carmine, horizontal coil (Scott 353)**, magnificent centering, a beauty, o.g., lightly hinged, Extremely Fine.  
Scott \$90. Estimate \$100 - 150



- 124** ★★ **1909, 2¢ carmine, bluish paper (Scott 358)**, excellent centering and color, o.g., never hinged, Very Fine.  
Scott \$170. Estimate \$50 - 75



- 125** ★★ **1909, 2¢ Lincoln, imperf (Scott 368)**, pair, large even margins, immaculate, o.g., never hinged, Extremely Fine and choice.  
Scott \$58. Estimate \$60 - 80



- 126** ★★ **1909, 2¢ Lincoln, bluish paper (Scott 369)**, nicely centered with excellent color, o.g., never hinged, Very Fine.  
Scott \$325. Estimate \$150 - 200



- 127** ★★田 **1909, 2¢ Alaska-Yukon, imperf (Scott 371)**, centerline block of 4, flawless, o.g., never hinged, Extremely Fine.  
Scott \$275. Estimate \$200 - 300



- 128** ★★田 **1910, 2¢ carmine (Scott 375)**, plate block of 6, impressively well centered throughout, a beautiful plate block, o.g., never hinged, Extremely Fine.  
Scott \$185. Estimate \$200 - 300



- 129** ★ **1911, 3¢ deep violet (Scott 376)**, lovely near perfect centering, a beautiful stamp, o.g., very lightly hinged, Very Fine to Extremely Fine.  
Scott \$18. Estimate \$30 - 40



- 130** ★★ **1911, 6¢ red orange (Scott 379)**, a handsome example with great color and large margins, o.g., never hinged, Very Fine.  
Scott \$85. Estimate \$75 - 100



- 131** ○ **1910, 1¢ green, horizontal coil (Scott 392)**, a superlative example, the centering and margins are quite impressive, neat light cancel, Extremely Fine and choice; with 2016 P.S.E. certificate graded XF 90.  
Scott \$50. SMQ \$140. Estimate \$100 - 150



- 132** ○ **1910, 2¢ carmine, horizontal coil (Scott 393)**, fresh and well centered, uncommonly choice, very lightly canceled, Very Fine.  
Scott \$55. Estimate \$40 - 60



- 133** ○ **1913, 5¢ blue, horizontal coil (Scott 396)**, pair, uncommonly well centered, a lovely pair, lightly canceled, Very Fine to Extremely Fine.  
Scott \$190. Estimate \$150 - 200

**1913 Panama-Pacific Issue**



- 134** ★★ **1913, 5¢ Panama-Pacific, perf 12 (Scott 399)**, a lovely fresh well centered example, o.g., never hinged, Very Fine.  
Scott \$150. Estimate \$75 - 100



- 135** ★★ **1913, 5¢ Panama-Pacific, perf 12 (Scott 399)**, a handsome well centered example, o.g., never hinged, Very Fine.  
Scott \$150. Estimate \$75 - 100



- 136** ★ **1913, 10¢ Panama-Pacific, perf 12, orange yellow (Scott 400)**, a beautiful stamp that is just about perfectly centered, o.g., lightly hinged, Extremely Fine.  
Scott \$110. Estimate \$75 - 100

1912-1917 Washington-Franklin Issues



- 137 ★★ 1912, 2¢ carmine (Scott 406), remarkable centering that is very close to perfection, o.g., never hinged, Extremely Fine and choice. Scott \$15. Estimate \$40 - 60



- 138 ○ 1912, 1¢ green, horizontal coil (Scott 412), pair, impressively well centered, fairly light cancel, Extremely Fine and choice. Scott \$120. Estimate \$100 - 150



- 139 ★ 1912, 10¢ orange yellow (Scott 416), excellent color, o.g., lightly hinged, Fine to Very Fine. Scott \$38. Estimate \$30 - 40



- 140 ★★田 1912, 10¢ orange yellow (Scott 416), plate block of 6, nicely centered throughout, o.g., never hinged, Very Fine. Scott \$825. Estimate \$600 - 800



- 141 ★★ 1914, 12¢ claret brown (Scott 417), a lovely gem with centering that is close to perfection, o.g., never hinged, Very Fine to Extremely Fine. Scott \$90. Estimate \$75 - 100



- 142 ★ 1914, 12¢ claret brown (Scott 417), a beautiful plate number single, fresh and well centered, o.g., lightly hinged, Very Fine to Extremely Fine. Scott \$38. Estimate \$60 - 80



- 143** ★ **1912, 15¢ gray (Scott 418)**, huge even margins, an eye-popping gem, o.g., lightly hinged, Extremely Fine to Superb. Scott \$78. Estimate \$150 - 200



- 144** ★ **1912, 15¢ gray (Scott 418)**, a “wow” stamp, outstandingly well centered and very fresh, o.g., lightly hinged, Extremely Fine. Scott \$78. Estimate \$100 - 150



- 145** ★★ **1912, 15¢ gray (Scott 418)**, plate number single, fresh, o.g., never hinged, almost Very Fine. Scott \$175. Estimate \$100 - 150



- 146** ★★/★田 **1912, 15¢ gray (Scott 418)**, plate block of 6, well centered, a lovely plate block, o.g., top center stamp lightly hinged, other 5 stamps never hinged, Very Fine. Scott \$953 as singles. Estimate \$500 - 751



- 147** ★ **1914, 20¢ ultramarine (Scott 419)**, superlative centering and bright fresh color, o.g., lightly hinged, Choice Very Fine; with 2017 P.S.E. certificate conservatively graded VF 80. Scott \$175. SMQ \$190. Estimate \$150 - 200



- 148** ★★ **1914, 30¢ orange red (Scott 420)**, a premium example boasting excellent color and centering, o.g., never hinged, Very Fine. Scott \$230. Estimate \$200 - 300



- 149** ○ **1914, 50¢ violet, S.L. watermark (Scott 421)**, marvelously well centered amid large margins, lightly canceled, Extremely Fine. Scott \$28. Estimate \$40 - 60



- 150** ★★ **1914, 1¢ green (Scott 424)**, gorgeous centering, a truly magnificent gem, o.g., never hinged, Extremely Fine to Superb. Scott \$5. Estimate \$40 - 60



- 153** ★ **1914, 4¢ brown (Scott 427)**, premium centering and excellent color, o.g., very lightly hinged, Very Fine to Extremely Fine. Scott \$33. Estimate \$50 - 75



- 151** ○ **1914, 1¢ green (Scott 424)**, a one-in-a-million gem, perfectly centered within oversized jumbo margins, lightly canceled, Superb; with 2008 P.S.E. certificate graded SUP 98J. SMQ \$400. Estimate \$250 - 350



- 154** ★ **1914, 4¢ brown (Scott 427)**, near perfect centering amid large margins, o.g., lightly hinged, Extremely Fine. Scott \$33. Estimate \$40 - 60



- 152** ★★田 **1914, 3¢ deep violet (Scott 426)**, plate block of 6, nicely centered throughout, a premium plate block, o.g., never hinged, Very Fine. Scott \$400. Estimate \$400 - 600



- 155** ★ **1914, 4¢ brown (Scott 427)**, fresh, nicely centered, o.g., lightly hinged, Very Fine. Scott \$33. Estimate \$30 - 40



- 156** ★★/★田 **1914, 9¢ salmon red (Scott 432)**, plate block of 6, lovely fresh color, o.g., 4 stamps with hinge remnants, top left and bottom right stamps never hinged, Fine to Very Fine. Scott \$725. Estimate \$400 - 600





**157** ★★ **1914, 12¢ claret brown (Scott 435)**, bright fresh color, o.g., never hinged, Fine to Very Fine.  
Scott \$60. Estimate \$30 - 40



**161** ○ **1914, 1¢ green, horizontal flat plate coil (Scott 443)**, perfectly centered, a beautiful stamp; cert mentions "cancel cutting the face at right", otherwise Extremely Fine to Superb; with 2018 P.S.E. certificate graded XF-SUP 95.  
Scott \$45. Estimate \$40 - 60



**158** ★ **1914, 15¢ gray (Scott 437)**, handsome centering and lovely fresh color, o.g., very lightly hinged, Very Fine; with photocopy of 2019 P.F. certificate for pair.  
Scott \$110. Estimate \$60 - 80



**162** ○ **1914, 2¢ carmine, horizontal flat plate coil (Scott 444)**, perfectly centered within large margins, a gorgeous stamp that is just about as good as this issue comes, neat light cancel, Superb.  
Scott \$40. Estimate \$75 - 100



**159** ★ **1914, 30¢ orange red (Scott 439)**, near perfect centering, with bright intense color on white paper, o.g., very lightly hinged, Extremely Fine and choice.  
Scott \$210. Estimate \$200 - 300



**163** ★ **1914, 5¢ blue, horizontal flat plate coil (Scott 447)**, line pair, well centered, o.g., hinged; partly separated and held together by hinging, otherwise Very Fine.  
Scott \$240. Estimate \$100 - 150



**160** ○ **1915, 50¢ violet (Scott 440)**, a superlative example featuring magnificent centering and bright fresh color, very lightly canceled, Very Fine to Extremely Fine; with 2006 P.S.E. certificate graded VF-XF 85.  
Scott \$20. SMQ \$45. Estimate \$35 - 50



**164** ○ **1916, 2¢ carmine, type III, vertical rotary coil (Scott 450)**, a gorgeous stamp, remarkably well centered, light 1935 cancel, Extremely Fine to Superb.  
Scott \$25. Estimate \$60 - 80



**165** ★★ **1916, 4¢ brown, horizontal rotary coil (Scott 457)**, gorgeous centering and color, o.g., never hinged, Extremely Fine, a gem! with photocopy of 2019 P.S.E. certificate graded XF 90 for pair.  
Scott \$55. SMQ \$95. Estimate \$75 - 100

**169** ★★ **1916, 3¢ violet (Scott 464)**, superlative centering, o.g., never hinged, Very Fine.  
Scott \$165. Estimate \$120 - 150



**166** ○ **1916, 5¢ blue, horizontal rotary coil (Scott 458)**, pair, marvelously well centered, Extremely Fine.  
Scott \$95. Estimate \$75 - 100

**170** ★★ **1916, 5¢ blue (Scott 466)**, excellent centering and deep rich color, o.g., never hinged, Very Fine to Extremely Fine.  
Scott \$150. Estimate \$120 - 150



**167** ★★ **1916, 2¢ carmine (Scott 463)**, mathematically perfect centering, a magnificent gem for the most demanding connoisseur, o.g., never hinged, Superb.  
Scott \$10. Estimate \$100 - 150

**171** ★ **1916, 5¢ blue (Scott 466)**, well centered within uncommonly large margins, o.g., hinged, a Very Fine jumbo.  
Scott \$65. Estimate \$75 - 100



**168** ★★ **1916, 2¢ carmine (Scott 463)**, remarkably choice centering, a gem example, o.g., never hinged, Very Fine to Extremely Fine.  
Scott \$10. Estimate \$40 - 60

**172** ★ **1916, 6¢ red orange (Scott 468)**, a gem featuring mathematically perfect centering and brilliant fresh color, o.g., barest trace of hinge, Extremely Fine to Superb.  
Scott \$80. Estimate \$100 - 150



173 ★ **1916, 7¢ black (Scott 469)**, well centered with deep rich color, o.g., very lightly hinged, Very Fine.  
Scott \$110. Estimate \$75 - 100



177 ★★ **1916, 10¢ orange yellow (Scott 472)**, a lovely example featuring handsome centering and color, o.g., never hinged, Very Fine.  
Scott \$230. Estimate \$150 - 200



174 ★ **1916, 7¢ black (Scott 469)**, rich intense color, o.g., very lightly hinged, almost Very Fine.  
Scott \$110. Estimate \$50 - 75



178 ★ **1916, 11¢ dark green (Scott 473)**, a perfectly centered beauty with deep intense color on brilliant white paper, o.g., very lightly hinged, Extremely Fine and choice.  
Scott \$43. Estimate \$75 - 100



175 ★ **1916, 8¢ olive green (Scott 470)**, flawless centering, a remarkably beautiful stamp, o.g., barest trace of hinge, Extremely Fine.  
Scott \$30. Estimate \$40 - 60



179 ★ **1916, 11¢ dark green (Scott 473)**, a striking example, well centered within oversized margins, o.g., lightly hinged, a Very Fine jumbo.  
Scott \$43. Estimate \$60 - 80



176 ★ **1916, 9¢ salmon red (Scott 471)**, fresh and well centered, o.g., very lightly hinged, Very Fine.  
Scott \$55. Estimate \$40 - 60



180 ★ **1916, 12¢ claret brown (Scott 474)**, a lovely gem that is close to perfectly centered, o.g., very lightly hinged, Very Fine to Extremely Fine.  
Scott \$48. Estimate \$75 - 100



- 181 ○ 1917, \$2 dark blue (Scott 479), perfectly centered within large margins, neat cancel, Extremely Fine and choice. Scott \$40. Estimate \$50 - 75



- 184 ★★ 1916, 1¢ green, imperf (Scott 481), a lovely gem with parts of 5 other stamps, o.g., never hinged, a Superb jumbo. Estimate \$40 - 60



- 182 ★★ 1916, 1¢ green, imperf (Scott 481), plate number single, a lovely gem with parts of 5 other stamps, o.g., never hinged, a Superb jumbo. Estimate \$50 - 75



- 185 ★★ 1916, 1¢ green, imperf (Scott 481), a lovely gem with parts of 5 other stamps, o.g., never hinged, a Superb jumbo. Estimate \$40 - 60



- 183 ★★ 1916, 1¢ green, imperf (Scott 481), a gorgeous gem with parts of 3 other stamps and a great position piece, o.g., never hinged, a Superb jumbo. Estimate \$40 - 60



- 186 ★★ 1917, 3¢ violet, type I, imperf (Scott 483), huge even margins, o.g., never hinged, simply Superb. Scott \$24. Estimate \$50 - 75



- 187 ★★ 1918, 1¢ green, vertical coil (Scott 486), a perfectly centered gem, what a stamp! o.g., never hinged, Superb. Estimate \$60 - 80



- 188 ★★ 1916, 1¢ green, horizontal coil (Scott 490), joint line pair, sensationally well centered, a magnificent gem, o.g., never hinged, Extremely Fine to Superb. Estimate \$50 - 75



- 192 ★★ 1922, 10¢ orange yellow, horizontal coil (Scott 497), near perfect centering and bright fresh color, o.g., never hinged, Extremely Fine and choice. Estimate \$50 - 75  
Scott \$35.



- 189 ★★ 1916, 2¢ carmine, type III, horizontal coil (Scott 492), lovely color and attractive centering, o.g., never hinged, Very Fine. Estimate \$30 - 40  
Scott \$19.



- 193 ★★田 1917, 2¢ rose, type I, imperf vertically (Scott 499b), block of 4, o.g., never hinged; a vertical row of blind perfs is barely visible at right on the gum side. Estimate \$100 - 150  
Scott \$2,200.



- 190 ★★ 1917, 3¢ violet, type I, horizontal coil (Scott 493), a superlative, immaculate example that is close to perfection, o.g., never hinged, Extremely Fine to Superb. Estimate \$60 - 80  
Scott \$30.



- 194 ★ 1917, 4¢ brown (Scott 503), a beautiful plate number single, remarkably well centered, o.g., very lightly hinged, Extremely Fine. Estimate \$30 - 40



- 191 ★★ 1917, 4¢ orange brown, horizontal coil (Scott 495), pair, an immaculate gem, perfectly centered and with bright fresh color, o.g., never hinged, Extremely Fine to Superb. Estimate \$75 - 100  
Scott \$50.



- 195** ★★ **1917, 6¢ red orange (Scott 506)**, the epitome of perfection, this is one spectacular stamp, o.g., never hinged, Superb.  
Scott \$25. Estimate \$100 - 150



- 198** ★★/★田 **1917, 12¢ claret brown (Scott 512)**, plate block of 6, exceptionally well centered, o.g., 5 stamps never hinged, the plate number single is barely hinged, Very Fine.  
Scott \$150. Estimate \$120 - 150



- 196** ★★/★田 **1917, 6¢ red orange (Scott 506)**, plate block of 6, unusually well centered, o.g., 5 stamps never hinged, the plate number single is barely hinged, Very Fine.  
Scott \$180. Estimate \$150 - 200



- 199** ★★ **1917, 15¢ gray (Scott 514)**, nicely centered, fresh, o.g., never hinged, Fine to Very Fine.  
Scott \$75. Estimate \$40 - 60



- 200** ★★ **1917, 30¢ orange red (Scott 516)**, near perfect centering, a magnificent gem, o.g., never hinged, Extremely Fine.  
Scott \$65. Estimate \$75 - 100



- 197** ★★ **1917, 10¢ orange yellow (Scott 510)**, nicely centered and fresh, o.g., never hinged, almost Very Fine.  
Scott \$34. Estimate \$20 - 30



**201** ★★ **1917, \$1 violet brown (Scott 518),** part imprint single, a superlative example with impressive centering, o.g., never hinged, Extremely Fine to Superb.  
Scott \$95. Estimate \$150 - 200



**202** ★★ **1917, \$1 violet brown (Scott 518),** well centered, with deep rich color, o.g., never hinged, Very Fine to Extremely Fine.  
Scott \$95. Estimate \$60 - 80



**203** ★★ **1917, \$1 violet brown (Scott 518),** plate number single, deep rich color, o.g., never hinged, Fine.  
Scott \$95. Estimate \$30 - 40



**204** ★★ **1917, \$1 violet brown (Scott 518),** imprint pair, lovely color, an attractive pair, o.g., never hinged, Fine to Very Fine.  
Scott \$190. Estimate \$75 - 100



**205** ★★ **1917, \$1 violet brown (Scott 518),** strip of 3 with plate number and part imprint, fresh color, o.g., never hinged, Fine to Very Fine.  
Scott \$285. Estimate \$75 - 100



**206** ★★ **1917, \$1 violet brown (Scott 518),** plate number and imprint strip of 3, a handsome strip, o.g., never hinged, almost Very Fine.  
Scott \$285+. Estimate \$120 - 150

1918-1920 Issues



207 ★★ 1918, 1¢ gray green, Offset (Scott 525), a fantastic one-in-a-million gem, perfectly centered within immense margins, o.g., never hinged, Superb. Estimate \$250 - 350

210 ★ 1918, 2¢ carmine, Offset, type V (Scott 527), near perfect centering, a beautiful example of this scarce type, o.g., lightly hinged, Very Fine to Extremely Fine. Scott \$18. Estimate \$30 - 40



211 ★★ 1918, 2¢ carmine, Offset, type VI (Scott 528A), a premium example, uncommonly well centered and very fresh, o.g., never hinged, Very Fine. Scott \$115. Estimate \$100 - 150



208 ★★田 1918, 1¢ gray green, Offset, dramatic perf shift (Scott 525 var.), block of 4 (trying to be a block of 6), a striking misperf and a great position piece, o.g., never hinged, Very Fine for the issue. Estimate \$75 - 100

212 ★★ 1919, 1¢ green, Offset imperf (Scott 531), pair, an immaculate gem pair with huge margins, o.g., never hinged, Superb. Scott \$48. Estimate \$75 - 100



209 ★★ 1920, 2¢ carmine, Offset, type IV (Scott 526), nicely centered within oversized margins, definitely a premium example, o.g., never hinged, Very Fine to Extremely Fine. Scott \$58. Estimate \$60 - 80

213 ○ 1919, 1¢ green, Offset imperf (Scott 531), guide line pair, beautifully well centered amid large margins, attractive flag cancel, Extremely Fine and choice. Scott \$53. Estimate \$75 - 100





- 214 ★★ 1918, 2¢ carmine rose, **Offset imperf, type IV (Scott 532)**, a spectacular jumbo gem with margins that are truly “eye-popping” - they don’t come much better than this! o.g., never hinged, Superb; with 2018 P.F. certificate graded SUP 98J. Scott \$70. SMQ \$225 as plain 98. Estimate \$200 - 300



- 215 ★★ 1918, 2¢ carmine, **Offset imperf, type V (Scott 533)**, a premium example featuring mathematically perfect centering, o.g., never hinged, Extremely Fine to Superb; with photocopy of 2019 P.F. certificate for block. Scott \$175. Estimate \$200 - 300



- 216 ★★ 1918, 2¢ carmine, **Offset imperf, type Va (Scott 534)**, pair, beautifully well centered amid very large margins, o.g., never hinged, Extremely Fine to Superb. Scott \$63. Estimate \$100 - 150



- 217 ★田 1918, 2¢ carmine, **Offset imperf, type Va (Scott 534)**, plate block of 6, o.g., hinged, Very Fine. Scott \$130. Estimate \$75 - 100



- 218 ★★ 1918, 3¢ violet, **Offset imperf (Scott 535)**, pair, a flawless gem featuring exceptional centering and fresh color, o.g., never hinged, Extremely Fine. Scott \$38. Estimate \$50 - 75



- 219 ★★/★田 1918, 3¢ violet, **Offset imperf (Scott 535)**, plate block of 6, deep intense color and impression, o.g., stamps never hinged, hinged in selvaige only, Very Fine. Scott \$108 as singles. Estimate \$60 - 80



**220** ★★ **1919, 1¢ green, rotary coil waste, perf 11 x 10 (Scott 538)**, a superlative example featuring near perfect centering amid ample margins, o.g., never hinged, Very Fine to Extremely Fine.  
Scott \$23. Estimate \$60 - 80



**221** ★★ **1919, 3¢ violet, rotary coil waste, perf 11 x 10 (Scott 541)**, exceptionally well centered and with bright fresh color, o.g., never hinged, Very Fine to Extremely Fine; with 2019 P.F. certificate for pair.  
Scott \$100. Estimate \$150 - 200



**222** ★★ **1920, 1¢ green, rotary coil waste, perf 10 x 11 (Scott 542)**, a beautiful stamp that is just about perfectly centered, o.g., never hinged, Extremely Fine to Superb.  
Scott \$30. Estimate \$75 - 100

**1922-1929 Issues**



**223** ★★ **1923, 4¢ yellow brown (Scott 556)**, o.g., never hinged, Extremely Fine to Superb.  
Estimate \$50 - 75



**224** ★★ **1922, 6¢ red orange (Scott 558)**, fresh and well centered, o.g., never hinged, Very Fine; with photocopy of 2019 P.F. certificate for block.  
Scott \$65. Estimate \$40 - 60



**225** ★★ **1922, 6¢ red orange (Scott 558)**, beautiful centering and fresh color, o.g., never hinged, Very Fine; with photocopy of 2019 P.F. certificate for block.  
Scott \$65. Estimate \$40 - 60



**226** ★★ **1923, 10¢ orange (Scott 562)**, o.g., never hinged, Superb.  
Estimate \$50 - 75



- 227 ★★ 1923, 12¢ brown violet (Scott 564), an attractive example with unusually large margins, o.g., never hinged, nearly Very Fine; with photocopy of 2002 P.S.E. certificate for block. Estimate \$60 - 80



- 228 ★★ 1923, 20¢ carmine rose (Scott 567), a perfectly centered beauty, o.g., never hinged, Extremely Fine and choice. Scott \$35. Estimate \$50 - 75



- 229 ★★ 1923, \$1 violet black (Scott 571), deep intense color on bright white paper amid large margins, o.g., never hinged, Very Fine to Extremely Fine. Scott \$85. Estimate \$75 - 100



- 230 ★★田 1923, \$1 violet black (Scott 571), plate block of 6, fresh and beautifully well centered throughout, o.g., never hinged, Very Fine and choice. Scott \$525. Estimate \$350 - 500



- 231 ★ 1923, \$5 carmine & blue (Scott 573), choice centering, o.g., barest trace of hinge, Extremely Fine. Scott \$90. Estimate \$75 - 100



- 232 ○田 1923, \$5 carmine & blue (Scott 573), block of 4, perfectly centered, lightly canceled, Extremely Fine. Scott \$95. Estimate \$75 - 100



233 ★ 1923, 1¢ green, rotary coil waste (Scott 578), a handsome example with impressive centering that is close to perfect, o.g., very lightly hinged, Extremely Fine and choice; with photocopy of 2007 P.S.E. certificate. Scott \$75. Estimate \$75 - 100

236 ★★ 1926, 9¢ rose, rotary (Scott 590), a lovely example, beautifully well centered, and showing natural gripper cuts at right, o.g., never hinged, Extremely Fine and choice; with photocopy of 2001 P.S.E. certificate for block. Scott \$13. Estimate \$30 - 40



234 ★★ 1925, 6¢ red orange, rotary (Scott 587), perfectly centered, o.g., never hinged, Extremely Fine to Superb. Scott \$20. Estimate \$40 - 60

237 ★★ 1926, 9¢ rose, rotary (Scott 590), a lovely example, beautifully well centered, and showing natural gripper cuts at right, o.g., never hinged, Extremely Fine and choice; with photocopy of 2001 P.S.E. certificate for block. Scott \$13. Estimate \$30 - 40



235 ★★/★田 1926, 8¢ olive green, rotary (Scott 589), plate block of 4, well centered, o.g., lightly hinged at top, never hinged at bottom, Very Fine. Scott \$300. Estimate \$200 - 300

238 ★★ 1924, 3¢ violet, horizontal coil (Scott 600), joint line pair, a superlative pair that is close to perfection, o.g., never hinged, Very Fine to Extremely Fine; with 2018 P.S.E. certificate graded VF-XF 85. Scott \$60. Estimate \$75 - 100



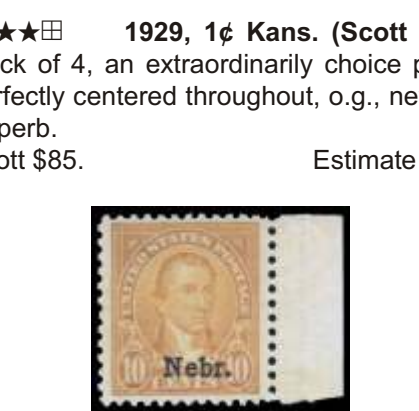
241 ★★ 1929, 1¢ Kans. (Scott 658), a lovely example, o.g., never hinged, Very Fine; with 2002 P.S.E. certificate for block. Estimate \$20 - 30



242 ★★ 1929, 1¢ Kans. (Scott 658), a lovely example, o.g., never hinged, Very Fine; with 2002 P.S.E. certificate for block. Estimate \$20 - 30



239 ★★田 1923, 2¢ Harding, flat plate (Scott 610), plate block of 10, signed in selvage by the postmaster and assistant postmasters, o.g., never hinged, Fine to Very Fine. Estimate \$40 - 60



243 ★★田 1929, 1¢ Kans. (Scott 658), plate block of 4, an extraordinarily choice plate block, perfectly centered throughout, o.g., never hinged, Superb. Scott \$85. Estimate \$120 - 150



240 ★★/★田 1924, 1¢ Huguenot-Walloon (Scott 614), plate block of 6, well centered throughout, o.g., 4 stamps never hinged, Extremely Fine. Scott \$40. Estimate \$30 - 40

244 ★★ 1929, 10¢ Nebr. (Scott 679), an exceptionally choice example, with premium centering and oversized margins, o.g., never hinged, Extremely Fine; with 2005 P.S.E. certificate. Scott \$180. Estimate \$150 - 200

**1930-1956 Issues**



**245** ★★ **1930, 2¢ Charleston (Scott 683)**, o.g., never hinged, Superb. Estimate \$40 - 60



**246** ★★ **1932, 10¢ Washington Bicentennial (Scott 715)**, o.g., never hinged, Superb. Estimate \$30 - 40



**247** ★★ **1938, 1½¢ Martha Washington (Scott 805)**, o.g., never hinged, Superb. Estimate \$40 - 60



**248** ★★ **1938, 2¢ John Adams (Scott 806)**, o.g., never hinged, Superb. Estimate \$40 - 60



**249** ★★ **1938, 4¢ Madison (Scott 808)**, o.g., never hinged, Superb. Estimate \$40 - 60



**250** ★★ **1938, 5¢ Monroe (Scott 810)**, o.g., never hinged, Superb. Estimate \$40 - 60



**251** ★★ **1938, 6¢ John Quincy Adams (Scott 811)**, o.g., never hinged, Superb. Estimate \$40 - 60



**252** ★★ **1938, 13¢ Millard Fillmore (Scott 818)**, o.g., never hinged, Superb. Estimate \$40 - 60



**253** ★★ **1938, 17¢ Andrew Johnson (Scott 822)**, o.g., never hinged, Superb. Estimate \$40 - 60



**254** ★ **1951, \$1 Woodrow Wilson, watermarked USIR (Scott 832b)**, o.g., very lightly hinged, Very Fine; with photocopy of 2017 P.F. certificate for block. Scott \$120. Estimate \$75 - 100



**255** ★★田 1938, \$2 Harding (Scott 833), plate block of 4, well centered, o.g., never hinged, Very Fine. Scott \$95. Estimate \$60 - 80

**257** ★★田 1938, \$5 Coolidge (Scott 834), plate block of 4, well centered throughout, o.g., never hinged (gum skip), Extremely Fine and choice. Scott \$375. Estimate \$150 - 200



**256** ★★田 1938, \$5 Coolidge (Scott 834), plate block of 4, perfect in every respect, o.g., never hinged, Extremely Fine and choice. Scott \$375. Estimate \$200 - 300

**258** ★ 1939, 10¢ Tyler (Scott 847), line pair, magnificent centering, o.g., very lightly hinged, Extremely Fine to Superb, not listed by SMQ; with 2017 P.S.E. certificate graded XF-SUP 95. Scott \$43. Estimate \$50 - 75



**259** ★★ 1956, \$5 Hamilton (Scott 1053), plate number single, o.g., never hinged, Extremely Fine. Scott \$58. Estimate \$40 - 60

**Airmail**



**260** ★★ **Airmail, 1918, 6¢ orange (Scott C1)**, near perfect centering, a beautiful gem in outstandingly choice condition, o.g., never hinged, Extremely Fine.  
Scott \$110. Estimate \$100 - 150



**261** ★★ **Airmail, 1918, 16¢ green (Scott C2)**, spectacular mathematically perfect centering, o.g., never hinged (light natural gum bend as often), a Superb gem; with photocopy of 2016 P.F. certificate for block.  
Scott \$120. Estimate \$120 - 150



**262** ★ **Airmail, 1918, 16¢ green (Scott C2)**, well centered, o.g., barest trace of hinge, Very Fine.  
Scott \$60. Estimate \$40 - 60



**263** ★★ **Airmail, 1918, 24¢ carmine rose & blue (Scott C3)**, very well centered, o.g., never hinged, Very Fine.  
Scott \$130. Estimate \$75 - 100



**264** ★ **Airmail, 1918, 24¢ carmine rose & blue (Scott C3)**, beautifully well centered, o.g., very lightly hinged, Extremely Fine.  
Scott \$65. Estimate \$50 - 75



**265** ★★ **Airmail, 1923, 16¢ dark blue (Scott C5)**, near perfect centering, with brilliant fresh color, a superlative example, o.g., never hinged, Extremely Fine and choice.  
Scott \$120. Estimate \$150 - 200



**266** ★★ **Airmail, 1923, 16¢ dark blue (Scott C5)**, plate number single, a magnificent gem example, most impressive, o.g., never hinged, Extremely Fine and choice.  
Scott \$120. Estimate \$100 - 150



**267** ★ **Airmail, 1923, 16¢ dark blue (Scott C5)**, wonderfully well centered with brilliant fresh color, o.g., barest trace of hinge, Extremely Fine and choice; with 2017 P.F. certificate graded XF 90.  
Scott \$60. SMQ \$95. Estimate \$75 - 100





268 ★★田 **Airmail, 1926, 15¢ Map & Planes (Scott C8)**, plate block of 6, a beautiful plate block, well centered throughout, uncommonly choice, o.g., never hinged, Extremely Fine. Scott \$45. Estimate \$50 - 75



269 ★★ **Airmail, 1928, 10¢ Lindbergh (Scott C10a)**, booklet pane of 3, o.g., never hinged, Fine. Scott \$115. Estimate \$40 - 60



270 ★ **Airmail, 1930, 65¢ Graf Zeppelin (Scott C13)**, exceptionally well centered, o.g., very lightly hinged, Very Fine to Extremely Fine. Scott \$180. Estimate \$120 - 150



271 ★ **Airmail, 1930, 65¢ Graf Zeppelin (Scott C13)**, fresh and well centered, o.g., lightly hinged, Very Fine. Scott \$180. Estimate \$100 - 150



272 ○ **Airmail, 1930, \$1.30 Graf Zeppelin (Scott C14)**, flawless centering, neat light machine slogan cancel, an Extremely Fine gem; with 2018 P.F. certificate graded XF 90. Scott \$375. SMQ \$625. Estimate \$400 - 600



273 ○ **Airmail, 1930, \$2.60 Graf Zeppelin (Scott C15)**, superlative centering, neat light machine slogan cancel, Very Fine to Extremely Fine; with 2018 P.F. certificate graded VF-XF 85. Scott \$550. SMQ \$725. Estimate \$500 - 750



274 ★★ **Airmail, 1933, 50¢ "Chicago" Zeppelin (Scott C18)**, beautifully well centered within large margins, o.g., never hinged, Extremely Fine to Superb. Scott \$75. Estimate \$75 - 100



275 ★★ **Airmail, 1933, 50¢ “Chicago” Zep-  
pelin (Scott C18)**, near perfect centering, o.g.,  
never hinged, Extremely Fine.  
Scott \$75. Estimate \$60 - 80

**Special Delivery and Registry**



276 ★ **Special Delivery, 1885, 10¢ blue  
(Scott E1)**, gorgeous centering, o.g., lightly hinged,  
Extremely Fine.  
Scott \$550. Estimate \$400 - 600



277 ★★ **Special Delivery, 1895, 10¢ blue  
(Scott E5)**, well centered with deep rich color, o.g.,  
never hinged, Very Fine.  
Scott \$500. Estimate \$300 - 400



278 ★★ **Special Delivery, 1902, 10¢ ultra-  
marine (Scott E6)**, plate number single, a specta-  
cularly choice example, well centered with large  
margins and impeccably fresh color, o.g., never  
hinged (hinged in selvaige only), Extremely Fine;  
with 2017 P.S.E. certificate.  
Scott \$525. Estimate \$500 - 750



279 ★★ **Special Delivery, 1902, 10¢ ultra-  
marine (Scott E6)**, plate number single, very close  
to absolute perfection, truly superlative in every re-  
spect, o.g., never hinged, Very Fine to Extremely  
Fine.  
Scott \$525. Estimate \$400 - 600



280 ★★ **Special Delivery, 1908, 10¢ green  
(Scott E7)**, a lovely gem with magnificent center-  
ing, o.g., never hinged, Extremely Fine; with photo-  
copy of 2018 P.F. certificate for block.  
Scott \$140. Estimate \$120 - 150



281 ★ **Special Delivery, 1908, 10¢ green  
(Scott E7)**, perfectly centered, o.g., very lightly  
hinged, Extremely Fine.  
Scott \$65. Estimate \$40 - 60



282 ★ **Special Delivery, 1914, 10¢ ultra-  
marine (Scott E9)**, beautifully well centered, o.g.,  
lightly hinged, Very Fine to Extremely Fine.  
Scott \$190. Estimate \$100 - 150



**283** ★★ **Special Delivery, 1917, 10¢ ultramarine (Scott E11 var.)**, "pink back" variety, a gorgeous well centered example, with exquisitely fresh color, o.g., never hinged, Extremely Fine and choice.  
Scott \$45. Estimate \$75 - 100



**287** ★★ **Special Delivery, 1925, 15¢ deep orange (Scott E13)**, beautifully well centered, o.g., never hinged, Very Fine to Extremely Fine.  
Scott \$75. Estimate \$50 - 75



**284** ★★ **Special Delivery, 1917, 10¢ ultramarine (Scott E11)**, an especially choice margin single with near perfect centering, o.g., never hinged, Extremely Fine.  
Scott \$45. Estimate \$60 - 80



**288** ★★ **Registry, 1911, 10¢ ultramarine (Scott F1)**, fresh, o.g., never hinged, Fine to Very Fine.  
Scott \$175. Estimate \$60 - 80



**285** ★★ **Special Delivery, 1917, 10¢ ultramarine (Scott E11)**, almost perfectly centered, o.g., never hinged, Extremely Fine.  
Scott \$45. Estimate \$40 - 60



**289** ★ **Registry, 1911, 10¢ ultramarine (Scott F1)**, an impressive example, beautifully well centered within within oversized margins, o.g., barest trace of hinge, Very Fine to Extremely Fine; with photocopy of 2017 P.F. certificate for block.  
Scott \$80. Estimate \$60 - 80



**286** ★★ **Special Delivery, 1922, 10¢ gray violet (Scott E12)**, perfectly centered within large margins, a magnificent example for the most demanding connoisseur, o.g., never hinged, Superb.  
Scott \$95. Estimate \$150 - 200

**Postage Due**



- 290 ★ **Postage Due, 1891, 5¢ bright claret (Scott J25)**, deep color and impression, magnificent centering, o.g., Extremely Fine and choice. Scott \$100. Estimate \$100 - 150



- 291 ★ **Postage Due, 1894, 10¢ deep claret (Scott J35)**, mathematically perfect centering and bright fresh color, o.g., lightly hinged, Extremely Fine and choice. Scott \$350. Estimate \$350 - 500



- 292 ★★ **Postage Due, 1895, 10¢ deep claret (Scott J42)**, a fresh well centered example, o.g., never hinged, Very Fine. Scott \$280. Estimate \$150 - 200



- 293 ★★ **Postage Due, 1914, 1¢ carmine lake (Scott J52)**, exceptionally well centered, o.g., never hinged, Extremely Fine. Scott \$220. Estimate \$150 - 200



- 294 ★★ **Postage Due, 1914, 1¢ carmine lake (Scott J52)**, nicely centered with excellent color, o.g., never hinged, Very Fine; with photocopy of 2019 P.F. certificate for block. Scott \$220. Estimate \$100 - 150



- 295 ★★田 **Postage Due, 1914, 1¢ carmine lake (Scott J52)**, block of 4, lovely fresh color, o.g., never hinged, Fine to Very Fine; with photocopy of 2018 P.F. certificate for block of 10. Scott \$880. Estimate \$350 - 500



- 296 ★ **Postage Due, 1914, 2¢ dull rose (Scott J53a)**, lovely centering, o.g., very lightly hinged, Very Fine. Scott \$68. Estimate \$40 - 60

☒



297 ★★ **Postage Due, 1917, 10¢ rose red (Scott J65a)**, lovely centering within wide margins, o.g., never hinged (tiny natural gum skip), Very Fine; with photocopy of 2019 P.F. certificate for block.  
Scott \$65. Estimate \$30 - 40



298 ★★ **Postage Due, 1917, 30¢ carmine rose (Scott J66)**, quite nicely centered, o.g., never hinged, Very Fine.  
Scott \$220. Estimate \$150 - 200



299 ★★ **Postage Due, 1930, 3¢ carmine (Scott J72)**, choice centering, o.g., never hinged, Extremely Fine.  
Scott \$48. Estimate \$40 - 60



300 ★ **Postage Due, 1930, 5¢ carmine (Scott J73)**, plate number single, an attractive well centered example in premium condition, o.g., barest trace of hinge, Very Fine to Extremely Fine.  
Scott \$18. Estimate \$30 - 40



301 ★★ **Postage Due, 1930, \$1 carmine (Scott J77)**, o.g., never hinged, Very Fine.  
Scott \$65. Estimate \$35 - 50



302 ★★ **Postage Due, 1930, \$5 carmine, wet printing (Scott J78)**, plate number single, o.g., never hinged, Very Fine to Extremely Fine.  
Scott \$85. Estimate \$60 - 80

Offices in China and Officials



303 ★★田 Offices in China, 1919, 4¢ on 2¢ rose (Scott K2), plate block of 6, attractive centering and very fresh, o.g., never hinged, Very Fine. Scott \$600. Estimate \$350 - 500



304 ★★ Offices in China, 1919, 10¢ on 5¢ blue (Scott K5), beautifully well centered with deep rich color on brilliant white paper, o.g., never hinged, Extremely Fine. Scott \$160. Estimate \$150 - 200



305 ★★田 Offices in China, 1919, 18¢ on 9¢ salmon red (Scott K9), plate block of 6, fresh, o.g., never hinged, Fine to Very Fine. Scott \$1,200. Estimate \$400 - 600



306 ★★ Offices in China, 1919, 24¢ on 12¢ brown carmine (Scott K11), mathematically perfect centering, a beautiful gem, o.g., never hinged, Extremely Fine and choice. Scott \$190. Estimate \$200 - 300



307 ★★ Offices in China, 1922, 2¢ on 1¢ green (Scott K17), lovely color and large margins, o.g., never hinged, Fine to Very Fine; with photocopy of 2019 P.F. certificate for block. Scott \$225. Estimate \$75 - 100



- 308** ★ **War Dept., 1873, 15¢ rose (Scott O90)**, beautifully fresh and well centered, o.g., lightly hinged, Very Fine. Scott \$85. Estimate \$50 - 75



- 312** S **Treasury Dept., 1875 Special Printing, 1¢ dark brown, overprinted "Specimen" (Scott O72SD)**, well centered with rich color, without gum as issued, Very Fine to Extremely Fine. Scott \$80. Estimate \$75 - 100



- 309** S **Interior Dept., 1875 Special Printing, 2¢ vermilion, overprinted "Specimen" (Scott O16SD)**, fresh and well centered, without gum as issued, Very Fine. Scott \$140. Estimate \$75 - 100



- 313** ★★ **Agriculture Dept., 1879, 3¢ yellow (Scott O95)**, bright fresh color, o.g., never hinged, Fine; with photocopy of 2016 P.F. certificate for block. Scott \$1,250. Estimate \$350 - 500



- 310** S **Navy Dept., 1875 Special Printing, 1¢ ultramarine, overprinted "Specimen" (Scott O35SD)**, beautiful centering and color, without gum as issued, Very Fine. Scott \$35. Estimate \$30 - 40



- 314** ★★ **Agriculture Dept., 1879, 3¢ yellow (Scott O95)**, bright fresh color, o.g., never hinged, Fine; with photocopy of 2016 P.F. certificate for block. Scott \$1,250. Estimate \$350 - 500



- 311** S **Post Office Dept., 1875 Special Printing, 1¢ black, overprinted "Specimen" (Scott O47SD)**, exceptionally well centered, without gum as issued, Very Fine to Extremely Fine. Scott \$45. Estimate \$40 - 60



- 315** ★★ **Agriculture Dept., 1879, 3¢ yellow (Scott O95)**, bright fresh color, o.g., never hinged, Fine; with photocopy of 2016 P.F. certificate for block. Scott \$1,250. Estimate \$350 - 500

**Parcel Post and Duck Stamps**



- 316 ★ Parcel Post, 1913, 20¢ carmine rose (Scott Q8), a handsome well centered example, o.g., hinged, Very Fine. Scott \$110. Estimate \$60 - 80



- 317 ★★ Parcel Post, 1913, 75¢ carmine rose (Scott Q11), fresh, o.g., never hinged, almost Very Fine. Scott \$190. Estimate \$75 - 100



- 318 ★★ Parcel Post Postage Due, 1913, 10¢ dark green (Scott JQ4), a premium example, well centered and with excellent color, o.g., never hinged, Very Fine to Extremely Fine; with 2018 P.F. certificate. Scott \$275. Estimate \$250 - 350



- 319 ○ Special Handling, 1955, 20¢ light green, dry printing (Scott QE3a), a lovely well centered example of this scarce printing, lightly canceled, Very Fine. Estimate \$75 - 100



- 320 ★★田 Hunting Permit, 1949, \$2 Goldeneye Ducks (Scott RW16), plate block of 6, perfectly centered and flawless in every respect, a lovely gem in superlative condition, o.g., never hinged, Extremely Fine and choice. Scott \$425. Estimate \$300 - 400



- 321 ★★田 Hunting Permit, 1957, \$2 American Eider (Scott RW24), plate block of 6, immaculate and perfectly centered, a gem, o.g., never hinged, Extremely Fine and choice. Scott \$575. Estimate \$350 - 500