

# JAPAN

Unwatermarked  
1874

Like 1/4 S Brown  
2 S  
YELLOW  
28



Type of 1872-73  
30 S  
RED VIOLET  
30

Type of 1872-73  
30 S  
GRAY  
31

Like 1/4 S  
1/4 S  
BROWN  
32



2 S  
YELLOW  
34

4 S  
ROSE  
35

6 S  
VIOLET BROWN  
36

30 S  
YELLOW GREEN  
37

30 S  
VIOLET  
38

30 S  
GRAY  
39

1875

Same  
1/4 S  
GRAY  
40

1 S  
BROWN  
41



6 S  
ORANGE  
43



Same  
Without  
Syllabic Characters  
1 S  
BROWN  
51

4 S  
GREEN  
52



2 S  
YELLOW  
54

# JAPAN

Unwatermarked  
1870-77



1870



1883-92



# JAPAN

Unwatermarked

1894



1896



1899-1900



1900



# JAPAN

Unwatermarked

1901-07



1905



1908



1908



1913



162-19

# JAPAN

Watermarked Wavy Lines

1914



Unwatermarked

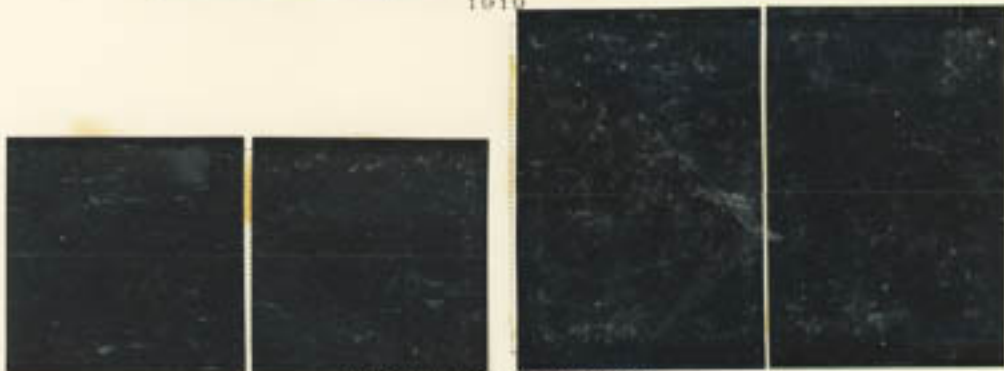
1915



1916



1917



Watermarked Wavy Lines



# JAPAN

Unwatermarked

1920



1921



Watermarked Wavy Lines

Unwatermarked

1922

1923



Watermarked Parallel Lines

1923



*186*

# JAPAN

Watermarked Wavy Lines *WML 14*

1924



Unwatermarked

1925



Watermarked Wavy Lines

1925



1926



Unwatermarked

1927



# JAPAN

Watermarked Curved Wavy Lines

1937

256



1937-40



1938-39



U.S.  
ROSE LAKE  
AND  
PALE ROSE

279

146



JAPAN

Aso National Park

1939

大日本帝國郵票切手

阿蘇國立公園



〒



PARC NATIONAL D'ASO

2599 (1939)

東京郵政印刷局

MH

216

JAPAN

Kirishima National Park

1940

手切郵便國帝本日大

園公立國島霧



PARC NATIONAL  
DE  
KIRISHIMA

2600 (1940)

通製原利印製内

3/12  
1057 6494  
1824

240-

240-

# JAPAN

Unwatermarked

1944



Watermarked Curved . . . vy Lines

1945-47



Types of 1945-45

195

195

BLUE

LIGHT GRAY

354A

054



1946-47

361



# JAPAN

Unwatermarked  
1949



1949



Watermarked Curved Wavy Lines  
1949



# JAPAN

Unwatermarked

1952



1952



1952



1952-54



# JAPAN

Unwatermarked

1952



1953



1953



1953-54



1953





# JAPAN POSTAL ISSUES



"Kishoten"



"Kishoten"

## DEFINITIVE

1975

"Kishoten" is a goddess who, according to Buddhist belief, brings the fortunes of the world, such as treasures and crops. The statue shown on this regular stamp (for overseas postal matter and parcel post) probably was produced around 1212. It stands in the Joruri-ji Temple in the Soraku District of Kyoto Prefecture.

## STEAM LOCOMOTIVES

1975

Between 1913 and 1940, 784 of the 9600-type locomotives were manufactured for use with freight cars. Between 1919 and 1928, 289 C51 locomotives were made for passenger trains.



Steam Locomotives



Steam Locomotives

## STEAM LOCOMOTIVES

1975

These stamps are the last of the series featuring steam locomotives. Shown are the "fathers of steam locomotives in Japan." The "Class 150" was made in 1871, and the one example of it was used in the Tokyo, Yokohama, and Osaka areas from 1872 until 1911.



4190