

1904-5. Wmk. Mult. Crown CA. P14.



SG 277-281, 283,
285-288 1904-05
79.25

1908. Wmk. Mult. Crown CA. P14.

SS 290-291 1908
12.25



1910-11. Wmk. Mult. Crown CA. P14.



SC 292-300
1910-11 223.50



56 303, 309, 307, 308a, 310,
311a, 312-315, 315a, 316

316b, 317a, 317b 1912-
25 128.25

1921-34



SG 340(x2), 343-345, 346, 346b,
347, 347a, 348, 349, 349a, 350,

350b, 351, 351b, 352s, 352,
353-356 1921-32 131.55.



SG 330, 331, 333
1918-19 4.45



SG 335 1918-19
.50



SG 337, 337c
1918 3.40



SG 361-362 1927-29
4.25



SG 363-366
1927-29 93.25

1935 (1 May).-36. Wmk. Mult. Script CA. Various perfs.



SG 362-372 1935-36
71,35

1935 (6 May). Silver Jubilee.

P132x14



SG 377-382 1935

11.50



SG 384, 387, 387F, 388-
392 1938-47 267.00



SG 287s, 289s, 313s, 315c, 316s,
377s 1938-49 248.00 est.



SG 383-385 1937

6.65



SG 396 1938-47

4.25



SG 450-401 1946

6.60



SG 398-399 1946

7.25



SG 410-412 1949
2.95



SG 431-432 1952
.60



SG 402-405 1947
1.45





SC.406-409 1949
1.45



SC.413-418 1950
14.35

VIKING BLACK ALBUMLEAF No. 34 W. A. TRANSMILL LTD., 47, SOUTHAMPTON WAY, LONDON, S.E. 17
MADE AND PRINTED IN ENGLAND



S6411-430 1951-54
99.35

CEYLON.



other pairs

1882

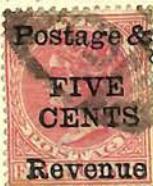


1883/98 CA



CEYLON

1885 various smh.



1886



1888/90 various smh.



1893



1898



1899

1899-smh.



CEYLON

1899/1909



1903/5 OCA



1904/5 Mult OCA



1906 MCA numbers



Ceylon

1910/11 MCA



MCA



1918 War Stamp



CEYLON



1921/7



1922/7



1926 Series



paper valy



CEYLON

1935 Silver Jubilee



1935/6



1937 Coronation



1938 2c (4/4) - 6c



CEYLON

1938 cont'd



p13 1/2 x 13 or 13 x 13 1/2



p13 1/2



p11 1/2 or 11 1/2 all



CEYLON

p. 11 1/2 p. 113 c (4 pairs)



p. 12



p. 11 1/2 n. 11 wk. upright



1894/1 over.

1895/6 official.



1900



