





\* I.R./OFFICIAL \*



1857-58  
1860-1862  
1863-1864

"GOVT PARCELS"



"ARMY / OFFICIAL"



ADMIRALTY / OFFICIAL



56 p. 1/18



2d  
1d  
1d



0146

Do 1/2d

DZ/4-5





cb 019/29



68 pto-55



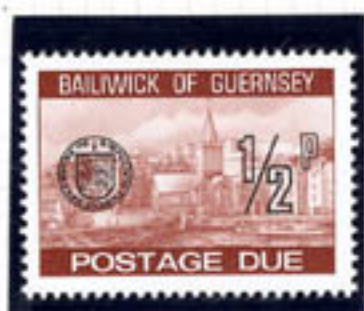






Guernsey 2017









1504 d/30





21/11/2019



1973  
25-10-2019



