







9.13.4. Dhl. Impression  
Pencil in blue (1st?)







Part 12









Sept. 1905. P. 12







13 1/2



13 1/2 x 12









Ref 13 1/2 x 12





P. 12/13/14





Dec 9/11 1905 P. 12





9.2



Ref 16812 1/2





Page 124





Ref 18. 112





Dec 17/10, 1908

P. 10/10



P. 12



P. 13/10



P. 14/10

P. 15





Nov. 1949. Tg. 5  
P. 12



24  
199





Page 12





Ref 12 x 11 1/2



Ref 12 x 11 1/2



Fig II 1.12





72 P. 11/2



P. 11/2



P. 11/2











۱۳۶۸۱۱۰



























1845- STITCH LINE CANCEL













1916 311

on 1891.7



issue of 190  
Extra





ISSUE 85-1987  
INTERIOR  
P.12



P.12





DOUBLE OVR RED & BLACK



11.12.05 9.12



2.12

9.12.05



9.12.05





1200 of 145 P. 12

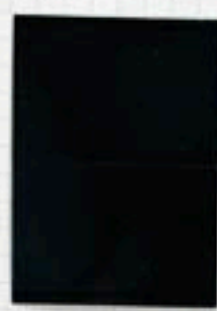


P. 12





10th of 1908  
912



P. 112



P. 112

11.11.12





17202 12 Aug  
Tg 2 P. 12



P. 12 1/2



8/22/13 1/2

Tg 2 P. 12



P. 13



Issue of 1913





ISSUE OF 1915

13



13 1/2



14



14 1/2

15

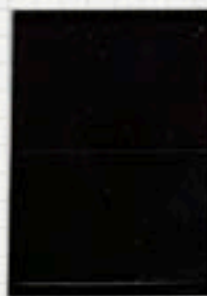


ISSUE OF 1908

15 1/2

15 1/2

16



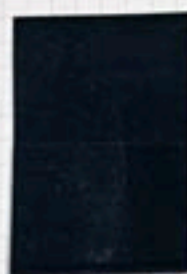
16 1/2





Issue of 1909  
1912

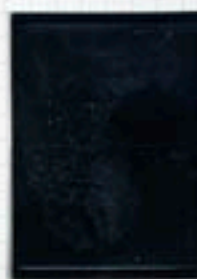
P. 12



P. 12



P. 12



P. 12

P. 12



P. 12

P. 12



P. 12



Issue of 1913

