

UNITED STATES

1881-82

Re-engraved



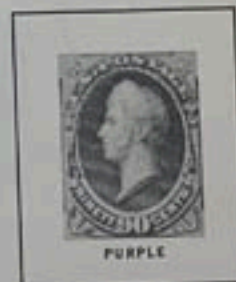
1883



1887



1888



These four issues often confuse collectors because of their resemblance to previous issues. But, on closer examination, minor design differences and new colors as well as new designs distinguish them from their predecessors (refer to STAMP IDENTIFIER).

UNITED STATES

1890-93



BENJAMIN FRANKLIN



GEORGE WASHINGTON



GEORGE WASHINGTON



ANDREW JACKSON



ABRAHAM LINCOLN



ULYSSES S. GRANT



JAMES A. GARFIELD



WILLIAM T. SHERMAN



DANIEL WEBSTER



HENRY CLAY



THOMAS JEFFERSON



OLIVER HAZARD PERRY

Last regular issue of U.S. stamps to be printed by a private bank note company, these varieties are prized for their small size and simple design. Continuing an American tradition, these stamps honor U.S. presidents, military heroes, and political leaders. Of philatelic note and value are small white "caps" found on some of the 2c values.

UNITED STATES

1893

COLUMBIAN EXPOSITION



Columbus in sight of land from the deck of the Santa Maria, as pictured by artist William Powell. Columbus' face is clean-shaven.



Columbus landing at San Salvador in the Bahamas in 1492. The scene is one day after that on the 1c value, now he has a full beard!



The Santa Maria, Columbus' flagship, was copied from an engraving by a Spanish historian-artist and is recognized to be an exact replica.



The entire fleet of Columbus was an imposing sight in 1492, but all three ships could be put on the deck of any modern-day luxury ocean liner.



Columbus, at the Court of Spain, begs Queen Isabella to finance his courageous trip to the Indies, by contributing her precious jewels.



Columbus is welcomed in Barcelona after his discovery of America. The greatest hero of his day, he was received with pomp and honor.



Though undermined by political foes, Columbus regained the favor of Queen Isabella when she learned the truth about the attacks on him.



As a gift, Columbus offered a group of American Indians to Isabella. The Indians were taken to the Cathedral where they were baptized.



The platform where Columbus told of his discoveries and presented the Indians may still be seen as part of the Cathedral in Barcelona.



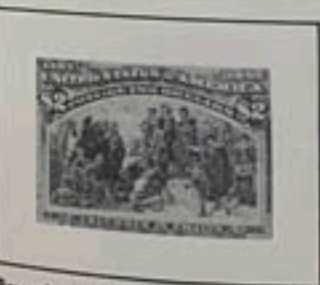
Columbus shown at the Monastery of Rabida explaining his radical theory of a round world. The first dog is pictured on a stamp design.



Queen Isabella recalled Columbus to Barcelona to reconsider the financing of his intended expedition to find a new route to the Indies.



Faced with a Treasury deficit, Queen Isabella pawned her jewels to buy the necessary ships and supplies for Columbus' westward voyage.



Powerful political enemies, who envied Columbus' popularity with the Queen, were successful in having him chained and imprisoned.



After his third trip to America, Columbus proudly returned to Spain. Here, he astounded the Spanish Court with tales of his new discoveries.



This picture of Queen Isabella and Columbus represents the first time a U.S. stamp carried the portrait either of a queen or a non-citizen.



The cast reproduced as the central design was taken from a commemorative half-dollar issued for the 1893 Columbian Exposition.

UNITED STATES

1894

Some as 1890-93 issue, but with Triangles in Upper Corners; Unwatermarked



BENJAMIN FRANKLIN



BENJAMIN FRANKLIN



GEORGE WASHINGTON



GEORGE WASHINGTON



GEORGE WASHINGTON



GEORGE WASHINGTON



GEORGE WASHINGTON



ANDREW JACKSON



ABRAHAM LINCOLN



ULYSSES S. GRANT



JAMES A. GARFIELD



WILLIAM T. SHERMAN



DANIEL WEBSTER



HENRY CLAY



THOMAS JEFFERSON



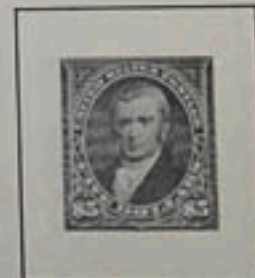
OLIVER HAZARD PERRY



OLIVER HAZARD PERRY



JAMES MADISON



JOHN MARSHALL

These were the first U.S. postage stamps ever printed by the Bureau of Engraving and Printing. The addition of small delicate triangles to their upper corners, and the inclusion of one, two and five dollar denominations are the principal differences between these varieties and their 1890 counterparts.

1895
Watermarked USPS



BENJAMIN FRANKLIN



GEORGE WASHINGTON



GEORGE WASHINGTON



GEORGE WASHINGTON



ANDREW JACKSON



ABRAHAM LINCOLN



ULYSSES S. GRANT



JAMES A. GARFIELD



WILLIAM T. SHERMAN

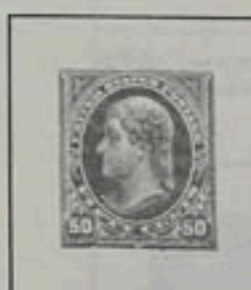


DANIEL WEBSTER

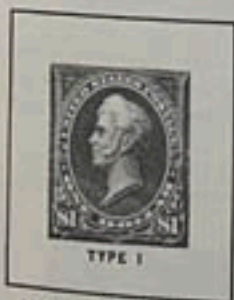


DARK BLUE

HENRY CLAY



THOMAS JEFFERSON



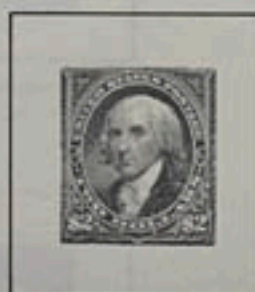
TYPE I

OLIVER HAZARD PERRY

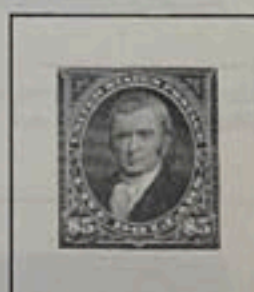


TYPE II

OLIVER HAZARD PERRY



JAMES MADISON



JOHN MARSHALL

These varieties have the same designs as the 1894 issue, but were printed on paper watermarked with the double-line letters USPS, so arranged that one letter or a portion of one appears on each stamp. This was the first time that stamps for postal use were watermarked, and it was done to prevent counterfeiting.

1898
Watermarked USPS



BENJAMIN FRANKLIN



GEORGE WASHINGTON



ABRAHAM LINCOLN



ULYSSES S. GRANT



JAMES A. GARFIELD



DANIEL WEBSTER



DANIEL WEBSTER



HENRY CLAY

1898
TRANS-MISSISSIPPI EXPOSITION



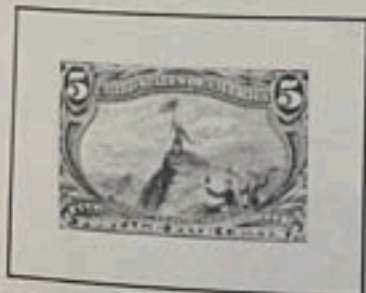
A scene from Father Marquette's explorations of the Mississippi River.



Grain harvesting with horse-drawn combines was slow and tedious.



Buffalo were prized by the Indians for food and clothing.



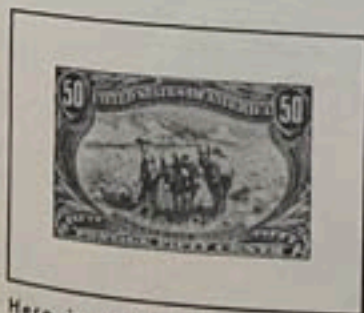
John Charles Frémont planted a U.S. flag on highest peak in Rocky Mts.



The U.S. Cavalry that protected settlers from fierce Indian attacks.



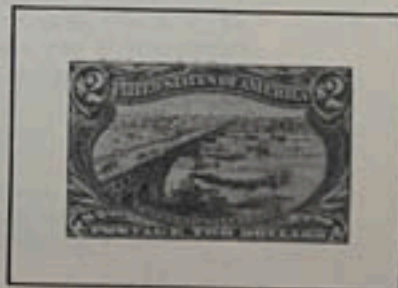
Death of a horse pulling a "Prairie Schooner" was a typical hardship.



Here is a typical gold-mining prospector with his burros and dog.



Western cattle were often killed by



A marvel of the 1890's: bridge over

UNITED STATES

1901

PAN-AMERICAN EXPOSITION



Great Lakes steamships were the major method used in forwarding goods between the midwest and east.



Fast trains provided the best cross country transportation. Pictured here: a New York to Chicago deluxe express train.



Electric operated taxicab in Washington, D.C. heralded the leadership of the U. S. in automotive development.



The bridge at Niagara Falls, an engineering marvel of the 19th century, intrigued visitors at the Exposition.



The famous Sault Ste. Marie canal, through which more shipping tonnage passes than any other in the world.



Crossing the Atlantic in less than 10 days, the S. S. St. Paul was one of the world's fastest ocean liners in 1901.

UNITED STATES

1902-03

Watermarked USPS
Perforated 12



BENJAMIN FRANKLIN



GEORGE WASHINGTON



ANDREW JACKSON



ULYSSES S. GRANT



ABRAHAM LINCOLN



JAMES A. GARFIELD



MARTHA WASHINGTON



DANIEL WEBSTER



BENJAMIN HARRISON
CV 11⁰²



HENRY CLAY
CV 14⁰²



THOMAS JEFFERSON



DAVID G. FARRAGUT



JAMES MADISON



JOHN MARSHALL

The "Gay 90's" passed into nostalgic history, the new 20th Century dawned, and the Government issued stamps designed to conform to the baroque or "ginger-bread" style of the times. Portraits of American notables in the fields of law, politics, and war

UNITED STATES

1903

Perforated 12-5/19



GEORGE WASHINGTON

1906

Imperforate



GEORGE WASHINGTON

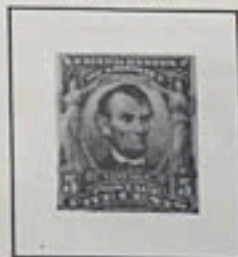
1906-08

Imperforate



BENJAMIN FRANKLIN

Imperforate



ABRAHAM LINCOLN

1904

LOUISIANA PURCHASE EXPOSITION



ROBERT R. LIVINGSTON

CV 5⁰⁰



THOMAS JEFFERSON

CV 2⁰⁰



JAMES MONROE

CV 30⁰⁰



WILLIAM MCKINLEY

CV 25⁰⁰



MAP OF LOUISIANA PURCHASE

CV 30⁰⁰

This set was issued to commemorate the Louisiana Purchase (827,987 sq. mi.), the first major acquisition west of the Mississippi. Pictured on the stamps are the notables who negotiated the vast transaction: Livingston and Monroe bargained with Napoleon; President Jefferson officially approved the deal. President McKinley authorized the St. Louis World's Fair celebrating the centennial of the Purchase.

1907

JAMESTOWN EXPOSITION



CAPTAIN JOHN SMITH

CV 5⁰⁰



FOUNDING OF JAMESTOWN



POCAHONTAS

This set marked the 300th anniversary of the founding of the Jamestown Colony in Virginia. On the 1c value is a picture of Capt. John Smith, who led three ships and 105 settlers to this foreign shore. The 2c has as its illustration a painting showing

UNITED STATES

1908-09

Watermarked USPS

Perforated 12



BENJAMIN FRANKLIN



GEORGE WASHINGTON



CN 6



CN 3



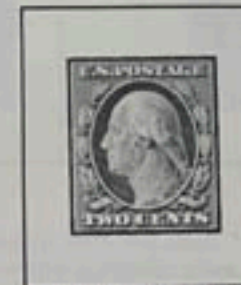
CN 6⁵⁰



Imperforate



BENJAMIN FRANKLIN



GEORGE WASHINGTON



These are the first 12 values of issues generally labelled, "The Third Bureau Series of 1908-09".

UNITED STATES

1908-10

Coil Stamps: Watermarked USPS
Perforated 12 Horizontally



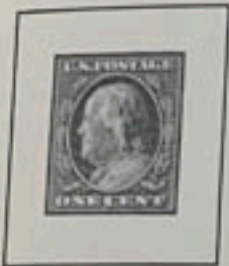
BENJAMIN FRANKLIN
CV 50



GEORGE WASHINGTON
CV 100



Perforated 12 Vertically



BENJAMIN FRANKLIN



GEORGE WASHINGTON



Coil stamps were first designed in 1908 to meet a demand from manufacturers of vending and affixing machines. The first issues, using 1902-03 designs, were experimental and are now quite rare.

1909

Perforated 12: Bluish Gray Paper



BENJAMIN FRANKLIN



GEORGE WASHINGTON



All values up to and including the 15c were printed on 30% rag stock. This resulted in the "Bluish Paper" varieties which are now philatelic gems.

1909

LINCOLN MEMORIAL



BL. GR. PAPER



IMPERF.

To mark the 100th anniversary of the birth of Abraham Lincoln on Feb. 12, 1809 in Kentucky, a special stamp was issued in three forms: perforated, imperforate, and perforated on "Bluish Paper."

UNITED STATES

1909

ALASKA-YUKON PACIFIC EXPOSITION



In 1867 William Seward, astute Secretary of State, negotiated with Russia to buy Alaska for seven million two hundred thousand dollars. Called at the time "Seward's Folly," his prophetic good judgment is a fact of history today.

HUDSON-FULTON CELEBRATION



CV 423

For the 300th anniversary of the arrival of Henry Hudson in New York aboard the "Half-Moon," and the 100th anniversary of Robert Fulton's first trip in his steamboat "Clermont" a special stamp showing both vessels was issued.

1910-11

Watermarked USPS: Perforated 12

374



BENJAMIN FRANKLIN



GEORGE WASHINGTON



CV 600



Imperforate



BENJAMIN FRANKLIN



GEORGE WASHINGTON

UNITED STATES

1910-13

Coil Stamps: Watermarked USPS

Perforated 12 Horizontally

385

386

Perforated 12 Vertically



BENJAMIN FRANKLIN
CV 45



GEORGE WASHINGTON
CV 100
if genuine



BENJAMIN FRANKLIN



GEORGE WASHINGTON

Perforated 8½ Horizontally



BENJAMIN FRANKLIN



GEORGE WASHINGTON

Perforated 8½ Vertically



BENJAMIN FRANKLIN



GEORGE WASHINGTON



GEORGE WASHINGTON



GEORGE WASHINGTON



GEORGE WASHINGTON

UNITED STATES

1913

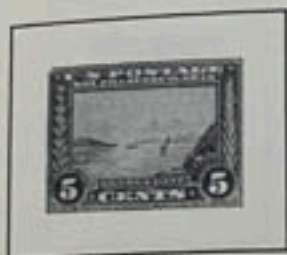
PANAMA-PACIFIC EXPOSITION
Perforated 12



VASCO NUNEZ DE BALBOA



PANAMA CANAL



GOLDEN GATE



DISCOVERY OF SAN FRANCISCO BAY

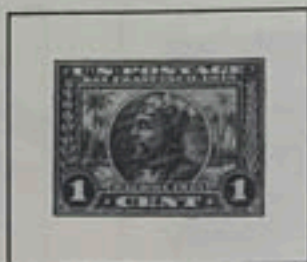


DISCOVERY OF SAN FRANCISCO BAY

This set of four designs was issued to mark the 400th anniversary of Balboa's discovery of the Pacific Ocean in 1513, also the opening of the Panama Canal in 1914. The first set was perforated with gauge 12 holes; the second (1914-15) had gauge 10 perfs.

1914-15

Perforated 10



VASCO NUNEZ DE BALBOA



PANAMA CANAL



GOLDEN GATE



DISCOVERY OF SAN FRANCISCO BAY

1912-14

Watermarked USPS

Perforated 12

Imperforate



GEORGE WASHINGTON



COIL STAMPS

Perforated 8 1/2 Horizontally

Perforated 8 1/2 Vertically



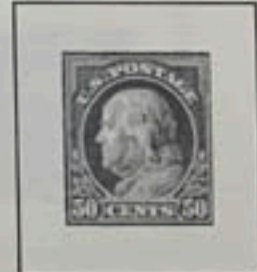
Perforated 12



BENJAMIN FRANKLIN



CVS



CV 1920

Watermarked USPS



The discontinuance of parcel post stamps made necessary five new denominations of ordinary stamps, 7c, 9c, 12c, 20c and 30c. The 7c value bears the head of Washington, the other four show the head of Franklin. The 1c and 2c varieties of this issue are printed with numerals instead of words.

UNITED STATES

1914-15

Watermarked USPS

Perforated 10



GEORGE WASHINGTON



BENJAMIN FRANKLIN



The continuing experiments to improve stamp separations resulted in changing the

UNITED STATES

WATERMARKED USPS

1914

Flat Plate Printing: Coil Stamps: Perforated 10 Vertically



1914

FLAT PLATE PRINTING

Coil Stamps: Perforated 10 Horizontally



1914

ROTARY PRESS PRINTING

Imperforate



1915

FLAT PLATE PRINTING

Perforated 10



Perforated 11



1914-16

Rotary Press Coil Stamps: Perforated 10 Vertically



1915-16

Rotary Press Coil Stamps: Perforated 10 Horizontally



UNITED STATES

1916-17

FLAT PLATE PRINTING

Unwatermarked: Perforated 10



GEORGE WASHINGTON



BENJAMIN FRANKLIN



CV 7

CV 16



JAMES MADISON



JOHN MARSHALL

Imperforate



GEORGE WASHINGTON



TYPE I



TYPE II

An unexpected new demand for high value stamps necessitated adding to this regular issue the \$2 and \$5 denominations, which were first issued in 1908.

1916-22
ROTARY PRESS COIL STAMPS
Perforated 10 Horizontally



Perforated 10 Vertically



1917
FLAT PLATE PRINTING
5c Error from Sheet of 2c

Perforated 10



Perforated 11



UNITED STATES

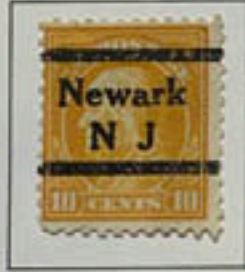
1917-19
Unwatermarked
Perforated 11



GEORGE WASHINGTON



BENJAMIN FRANKLIN



CN 622



1918



OR. RED AND BLACK

BENJAMIN FRANKLIN

1917



W.M. USPS

GEORGE WASHINGTON

1918



BENJAMIN FRANKLIN

Further experiments in perforating proved gauge 11 to be the most satisfactory for the type of paper used at this time. It seemed to make for a happy medium between the too fragile perf. 12 and the too strong perf. 10. The perf. 11 "Two Cent" design of 1908

UNITED STATES

1918-20

OFFSET PRINTING

Unwatermarked; Perforated 11

525



GEORGE WASHINGTON



CV 422



TYPE V



TYPE VA



TYPE VII



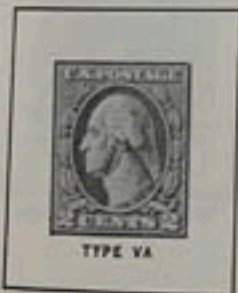
Imperforate



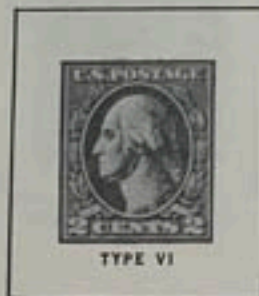
TYPE IV



TYPE V



TYPE VA



TYPE VI



TYPE VII



Perforated 12½



1923-25
 ROTARY PRESS PRINTING

Perforated 11x10



BENJAMIN FRANKLIN

Perforated 11x10



GEORGE WASHINGTON

Perforated 11



GEORGE WASHINGTON

1923-26
 Perforated 10

56



BENJAMIN FRANKLIN



WARREN G. HARDING



GEORGE WASHINGTON



ABRAHAM LINCOLN

CV 40



MARTHA WASHINGTON



THEODORE ROOSEVELT



JAMES A. GARFIELD



WILLIAM MCKINLEY

CV 625



ULYSSES S. GRANT

CV 400



THOMAS JEFFERSON



JAMES MONROE

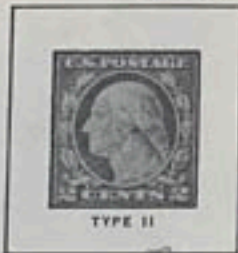
591

The rotary printed stamps, perf. 11x10 and 11, are the last to be fashioned from coil waste. The others of this issue have impressions, seen on the reverse, made by breaker bars used to prevent rotary press stamps from curling.

1919-21

ROTARY PRESS PRINTING

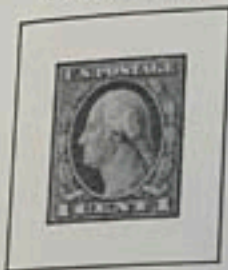
Unwatermarked; Perforated 11x10



CV 5,500 P



Perforated 10x11



Perforated 10



Perforated 11



Perforated 11



In an attempt to be thrifty, the Post Office issued this assortment of varieties. Some were "coil waste" made from sheets intended to be used to create coil stamps. This issue completed the Washington-Franklin series.

1919

VICTORY

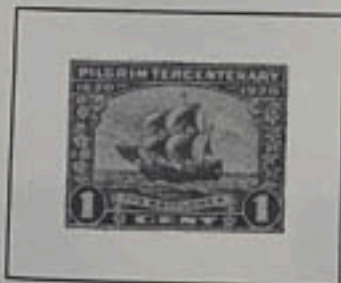


Hailing the allied victory in World War I, this stamp, showing "Freedom" with flags, was issued Mar. 3, 1919.

1920

PILGRIM TERCENTENARY

549



THE MAYFLOWER



LANDING OF PILGRIMS



SIGNING OF COMPACT

This set marked the 300th anniversary of the landing of the Pilgrims at Plymouth Rock. Historians agree that while Plymouth Rock will always be featured in connection with the landing, it is an accepted fact that the first landing was at Provincetown at the tip of Cape Cod and not at Plymouth.

1922-25
FLAT PLATE PRINTING
Perforated 11



NATHAN HALE



BENJAMIN FRANKLIN



WARREN G. HARDING



GEORGE WASHINGTON



ABRAHAM LINCOLN



MARTHA WASHINGTON



THEODORE ROOSEVELT



JAMES A. GARFIELD



WILLIAM MCKINLEY



ULYSSES S. GRANT



THOMAS JEFFERSON



JAMES MONROE



RUTHERFORD B. HAYES



GROVER CLEVELAND



AMERICAN INDIAN



STATUE OF LIBERTY

UNITED STATES

1922-25
FLAT PLATE PRINTING
Perforated 11



GOLDEN GATE



NIAGARA FALLS



BISON



ARLINGTON AMPHITHEATRE



LINCOLN MEMORIAL



U.S. CAPITOL



"AMERICA"
CV 152

Imperforate



BENJAMIN FRANKLIN



WARREN G. HARDING



577
GEORGE WASHINGTON

This Fourth Bureau Series, 1922 to 1934, marks a progressive era in the development of U.S. stamps. Artistically designed, this issue has both flat plate and rotary press printings, a variety of perforations and some imperforates, several new denominations, and a wide range of illustrations.

UNITED STATES

1923-29

COIL STAMPS

Perforated 10 Vertically



BENJAMIN FRANKLIN



WARREN G. HARDING



GEORGE WASHINGTON



GEORGE WASHINGTON

Q1750



ABRAHAM LINCOLN



MARTHA WASHINGTON



THEODORE ROOSEVELT



JAMES MONROE

Perforated 10 Horizontally



BENJAMIN FRANKLIN



WARREN G. HARDING



GEORGE WASHINGTON

This issue includes sheet stamps printed on rotary presses perf. 10, as well rotary coils with the same perfs.

1923

HARDING MEMORIAL

Flat Plate Printing



Flat Plate Printing



Rotary Press Printing



On Sept. 1, 1923, a month after his untimely death, a stamp was issued in U.S. President Harding's memory. Its popularity made it necessary to supplement the flat plate printing (Perf. 11) with a rotary press printing (Perf. 10). Imperforate sheets were issued on demand for those who wished to frame parts of sheets as a memorial of the late chief executive.

UNITED STATES

1924

HUGUENOT-WALLOON



"NEW NETHERLAND"



LANDING AT FORT ORANGE



MONUMENT AT MAYPORT, FLA.

Both the Huguenots (Protestants who lived in France) and Walloons (French-speaking Protestants who lived in northeastern France and southwestern Belgium), suffered from religious persecution. The Huguenots fled to Florida, started a settlement. A few years later it was destroyed by Spaniards. The Walloons fled to the "New World" and settled among several colonies located in New Amsterdam, Connecticut and Delaware.

1925

LEXINGTON-CONCORD



WASHINGTON AT CAMBRIDGE



BIRTH OF LIBERTY



THE MINUTE MAN

Although political action had been taken by the American colonies in 1774 to resist unfair taxation by England, the first military action was in 1775 at Lexington, Mass. where the Redcoats fired into a small group of Minutemen. A few hours later at Concord, Mass. the Minutemen fired "the shot heard 'round the world" and the British reeled back with heavy losses. Two months later George Washington assumed command of the Army.

1925

NORSE-AMERICAN



SLOOP "RESTAURATIONEN"



VIKING SHIP

1925-26

Flat Plate Printing: Perforated 11



BENJAMIN HARRISON



WOODROW WILSON

Honoring the first group of Norwegians, who came to the United States in 1825. These hardy pioneers were followed by thousands of their countrymen who settled mainly in the mid-west.

The 13c value, carrying the picture of President Benjamin Harrison, and the 17c value portraying President Woodrow Wilson, met the fees for circulars, parcel post, registered mail.

UNITED STATES

1926

ERICSSON MEMORIAL

BATTLE OF WHITE PLAINS

SESQUICENTENNIAL EXPOSITION



This variety commemorating the 150th anniversary of the signing of the Declaration of Independence was issued at the time of the celebration in Phila.



Ericsson invented the ship screw propeller; built the "Monitor," the U.S. Navy's first iron-clad ship.



Famous Revolutionary battle in which General George Washington, by brilliant strategy and tactics, escaped seemingly certain defeat.

INTERNATIONAL PHILATELIC EXHIBITION
Souvenir Sheet



UNITED STATES

1927
VERMONT SESQUICENTENNIAL



Issued to commemorate the 150th anniversary of the defeat of Gen. Burgoyne at the Battle of Bennington.

1927
BURGOYNE CAMPAIGN



Trapped by a greater American force after losing four minor battles, Gen. John Burgoyne (1722-92) was soundly whipped at Saratoga by Gen. Gates.

1928
VALLEY FORGE



150th anniversary of the winter encampment of Gen. Washington's army. The site is now a national shrine.

1926-28
ROTARY PRESS PRINTING
Perforated 11x10½



BENJAMIN FRANKLIN



WARREN G. HARDING



GEORGE WASHINGTON



GEORGE WASHINGTON



ABRAHAM LINCOLN



MARTHA WASHINGTON



THEODORE ROOSEVELT



JAMES GARFIELD



WILLIAM MCKINLEY



ULYSSES S. GRANT



THOMAS JEFFERSON



JAMES MONROE

1926
Imperforate



WARREN G. HARDING

1929
Perforated 11x10½



NATHAN HALE

UNITED STATES

1928

BATTLE OF MONMOUTH



Mary Hays carried pitchers of water to soldiers and replaced her husband at cannon.

1928

HAWAII SESQUICENTENNIAL



These overprints marked the discovery of the Hawaiian Islands by Captain James Cook (1728-79) in 1778. At first named the Sandwich Islands by Cook to honor the Earl of Sandwich, these islands became the 50th U.S. state in 1959.

1929

SULLIVAN EXPEDITION



Gen. Sullivan (1740-95) whipped Indians and Loyalists at Newtown, now Elmira, New York.

1928

AERONAUTICS CONFERENCE



Commemorating the 25th anniversary of man's first successful heavier-than-air flight by the Wright brothers at Kitty Hawk, North Carolina.

1929

GEORGE ROGERS CLARK



George Rogers Clark (1752-1818) captured Ft. Sackville (site of Vincennes, Ind.) and secured N.W. for America.

ELECTRIC LIGHT'S GOLDEN JUBILEE

Flat Plate Printing



Rotary Press Printing



Rotary Press Printing



These stamps honored Thomas A. Edison's development of the electric light in 1879, considered by many to be the world's greatest invention. Edison was not the first to think of an incandescent electric lamp but merits the credit for bringing it to perfection.

UNITED STATES

1929

BATTLE OF FALLEN TIMBERS



By defeating Chief Little Turtle, Gen. Anthony Wayne (1745-96) opened way to the West.

OHIO RIVER CANALIZATION



Army engineers built the country's most extensive canal system between Cairo, Illinois, Pittsburgh, Pennsylvania.

1930

MASSACHUSETTS BAY COLONY



300th Anniversary of Puritans' arrival, founding of first self-governing commonwealth.

CAROLINA-CHARLESTON



Noted the 260th anniversary of the Province of Carolina; the City of Charleston's 250th.

1930

ROTARY PRESS PRINTING

Perforated 11x10½



WARREN G. HARDING



WILLIAM HOWARD TAFT

Perforated 10 Vertically



WARREN G. HARDING



WILLIAM HOWARD TAFT

BRADDOCK'S FIELD



Gen. Braddock's forces defeated by French and Indians at Ft. Duquesne, now Pittsburgh, Pa.

VON STEUBEN



Inspector-General of the American Revolutionary Army, fought at Monmouth, Yorktown.

1931

YORKTOWN

PULASKI



A Polish Count who aided the American Revolution. Mortally wounded in Georgia.



Blockaded by a fleet at sea and an American and French army ashore, Cornwallis surrendered at Yorktown in 1781, ending the American Revolution.

RED CROSS



The poster, "The Greatest Mother," used as illustration to hail the birth of this Society.

UNITED STATES

1938

(Continued)



CHESTER A. ARTHUR



GROVER CLEVELAND



BENJAMIN HARRISON



WILLIAM MCKINLEY



THEODORE ROOSEVELT



WILLIAM HOWARD TAFT



WOODROW WILSON



WARREN G. HARDING



CALVIN COOLIDGE

1939

Coil Stamps: Perforated 10 Vertically



GEORGE WASHINGTON



MARTHA WASHINGTON



JOHN ADAMS



THOMAS JEFFERSON



JAMES MADISON



THE WHITE HOUSE



JAMES MONROE



JOHN QUINCY ADAMS



JOHN TYLER

Coil Stamps: Perforated 10 Horizontally



GEORGE WASHINGTON



MARTHA WASHINGTON



JOHN ADAMS

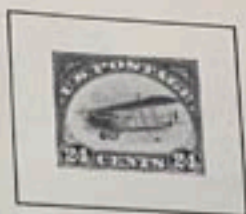
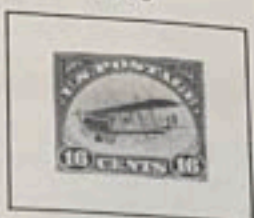
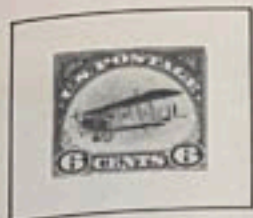


THOMAS JEFFERSON

Designed by a commercial artist, Miss Elaine Rawlinson, classical busts of all deceased U.S. presidents were included in this Fifth Bureau Series. Benjamin Franklin continued to appear; Martha Washington reappeared, and the White House was added.

UNITED STATES
AIR POST STAMPS

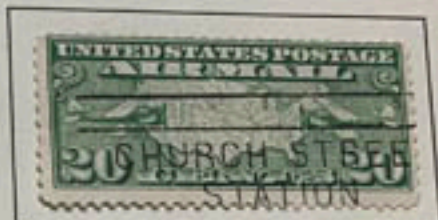
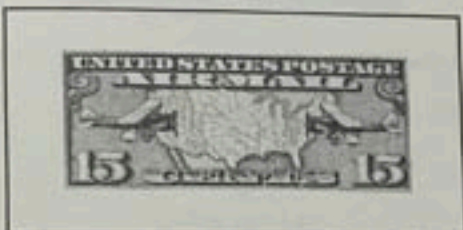
1918



1923



1926-27



1927

LINDBERGH



1928



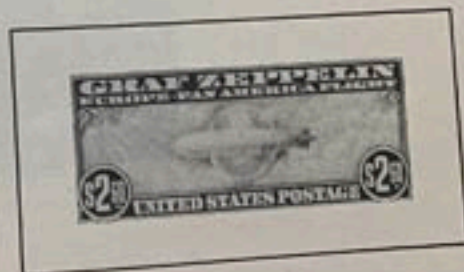
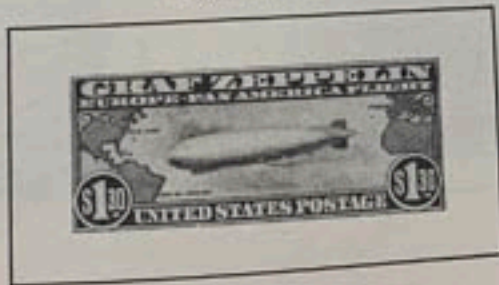
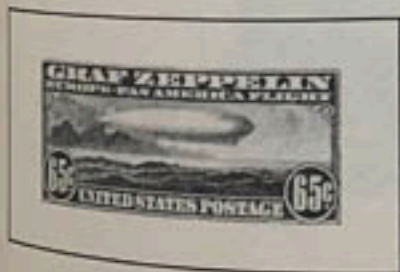
1930

Flat Plate Printings Perforated 11



1930

GRAF ZEPPELIN



The first air mail service in the U.S. was between New York, Philadelphia and Washington, D.C. To meet the postal fees for this and all subsequent air mail, stamps were issued in appropriate values. Note the three highly valuable Graf Zeppelin stamps, which were used on mail carried by this German dirigible between U.S., Brazil, Germany and Spain.



BENJAMIN FRANKLIN



ANDREW JACKSON



GEORGE WASHINGTON



ABRAHAM LINCOLN



EDWIN M. STANTON



THOMAS JEFFERSON



HENRY CLAY



DANIEL WEBSTER



ALEXANDER HAMILTON



OLIVER HAZARD PERRY

1870-71

Without Grill



BENJAMIN FRANKLIN



ANDREW JACKSON



GEORGE WASHINGTON



ABRAHAM LINCOLN



EDWIN M. STANTON



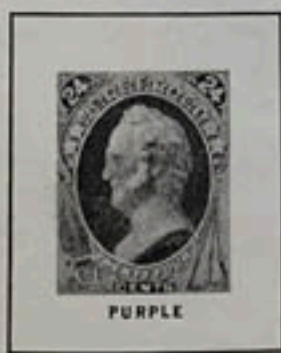
THOMAS JEFFERSON



HENRY CLAY



DANIEL WEBSTER



WINFIELD SCOTT



ALEXANDER HAMILTON



OLIVER HAZARD PERRY

You are now embarked on an exciting philatelic journey among the famous "Bank Note" issues. Fifty-nine major varieties were printed by three companies between

UNITED STATES

1873

Continental Bank Note Co. Printing
Types of 1870-71 with Secret Marks: Thin Hard Paper



BENJAMIN FRANKLIN



ANDREW JACKSON



GEORGE WASHINGTON



ABRAHAM LINCOLN



EDWIN M. STANTON



THOMAS JEFFERSON



HENRY CLAY



DANIEL WEBSTER



ALEXANDER HAMILTON



OLIVER HAZARD PERRY

On this page you see the classic stamps produced by Continental, which succeeded National. These issues are renowned for the "secret marks" which set apart Continental's work from that of National. (For more information on this subject, refer to the STAMP IDENTIFIER section.)

1875



ANDREW JACKSON



ZACHARY TAYLOR

The 1873 design, honoring President Andrew Jackson, was now printed in vermilion; and a new blue 5c value, picturing President Zachary Taylor, was issued to comply with the rate set by the international Universal Postal Union for European mail.



DARK ULTRAMARINE
BENJAMIN FRANKLIN



VERMILION
ANDREW JACKSON



GREEN
GEORGE WASHINGTON



BLUE
ZACHARY TAYLOR



PINK
ABRAHAM LINCOLN



NO SECRET MARK
THOMAS JEFFERSON



SECRET MARK
THOMAS JEFFERSON



RED ORANGE
DANIEL WEBSTER



FULL BLACK
ALEXANDER HAMILTON



CARMINE
OLIVER HAZARD PERRY

In 1879 Continental merged with American Bank Note Co. For philatelists the greatest single change, resulting from the merger, was that all the stamps were printed on soft porous paper, instead of the hard paper previously used by National and Continental.

1881-82

Re-engraved

1882



JAMES A. GARFIELD



BENJAMIN FRANKLIN



GEORGE WASHINGTON



ROSE
ABRAHAM LINCOLN



THOMAS JEFFERSON

1883-88



BENJAMIN FRANKLIN



GEORGE WASHINGTON



GEORGE WASHINGTON



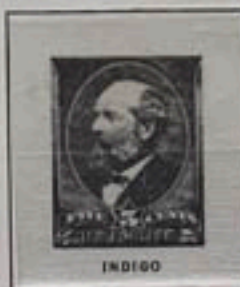
VERMILION
GEORGE WASHINGTON



ANDREW JACKSON



ANDREW JACKSON



INDIGO
JAMES A. GARFIELD



ORANGE BROWN
ALEXANDER HAMILTON



PURPLE
OLIVER HAZARD PERRY

1890-93



BENJAMIN FRANKLIN



GEORGE WASHINGTON



GEORGE WASHINGTON



GEORGE WASHINGTON
2c Cap on both "2's"



GEORGE WASHINGTON
2c Cap on left "2"



ANDREW JACKSON



ABRAHAM LINCOLN



ULYSSES S. GRANT



JAMES A. GARFIELD



WILLIAM T. SHERMAN



DANIEL WEBSTER



HENRY CLAY



THOMAS JEFFERSON



OLIVER HAZARD PERRY

Last regular issue of U.S. stamps to be printed by a private bank note company, these varieties are prized for their small size and simple design. Continuing an American tradition, these stamps honor U.S. presidents, military heroes and political leaders. Of philatelic note and value are small white "caps" found on some of the 2c values.

UNITED STATES

1893

COLUMBIAN EXPOSITION



Columbus in sight of land from the deck of the Santa Maria, as pictured by artist William Powell. Columbus' face is clean-shaven.



Columbus landing at San Salvador in the Bahamas in 1492. The scene is one day after that on the 1c value, now he has a full beard!



The Santa Maria, Columbus' flagship, was copied from an engraving by a Spanish historian-artist and is recognized to be an exact replica.



The entire fleet of Columbus was an imposing sight in 1492, but all three ships could be put on the deck of any modern-day luxury ocean liner.



Columbus, at the Court of Spain, begs Queen Isabella to finance his courageous trip to the Indies, by contributing her precious jewels.



Columbus is welcomed in Barcelona after his discovery of America. The greatest hero of his day, he was received with pomp and honor.



Though undermined by political foes, Columbus regained the favor of Queen Isabella when she learned the truth about the attacks on him.



As a gift, Columbus offered a group of American Indians to Isabella. The Indians were taken to the Cathedral where they were baptized.



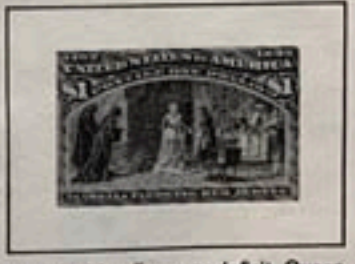
The platform where Columbus told of his discoveries and presented the Indians may still be seen as part of the Cathedral in Barcelona.



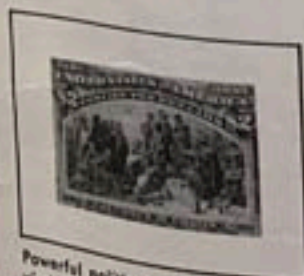
Columbus shown at the Monastery of Rabida explaining his radical theory of a round world. The first dog is pictured on a stamp design.



Queen Isabella recalled Columbus to Barcelona to reconsider the financing of his intended expedition to find a new route to the Indies.



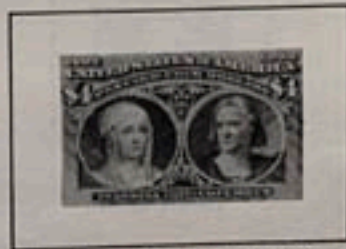
Faced with a Treasury deficit, Queen Isabella pawned her jewels to buy the necessary ships and supplies for Columbus' westward voyage.



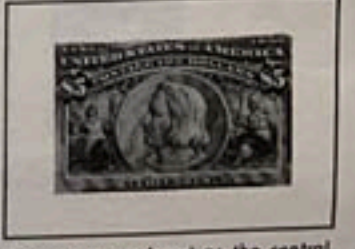
Powerful political enemies, who envied Columbus' popularity with the Queen, were successful in having him chained and imprisoned.



After his third trip to America, Columbus proudly returned to Spain. Here, he astounded the Spanish Court with tales of his new discoveries.



This picture of Queen Isabella and Columbus represents the first time a U.S. stamp carried the portrait either of a queen or a non-citizen.



The cost reproduced as the central design was taken from a commemorative half-dollar issued for the 1893 Columbian Exposition.

Same as 1890-93 Issue, but with Triangles in Upper Corners: Unwatermarked



BENJAMIN FRANKLIN



BENJAMIN FRANKLIN



GEORGE WASHINGTON



GEORGE WASHINGTON



GEORGE WASHINGTON



GEORGE WASHINGTON



GEORGE WASHINGTON



ANDREW JACKSON



ABRAHAM LINCOLN



ULYSSES S. GRANT



JAMES A. GARFIELD



WILLIAM T. SHERMAN



DANIEL WEBSTER



HENRY CLAY



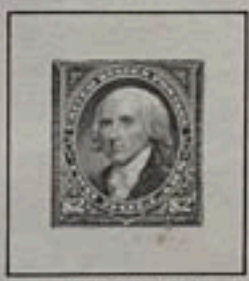
THOMAS JEFFERSON



TYPE I
OLIVER HAZARD PERRY



TYPE II
OLIVER HAZARD PERRY



JAMES MADISON



JOHN MARSHALL

These were the first U.S. postage stamps ever printed by the Bureau of Engraving and Printing. The addition of small delicate triangles to their upper corners, and the inclusion of one, two and five dollar denominations are the principal differences between these varieties and their 1890 counterparts.

UNITED STATES

1898

TRANS-MISSISSIPPI EXPOSITION



A scene from Father Marquette's explorations of the Mississippi River.



Grain harvesting with horse-drawn combines was slow and tedious.



Buffalo were prized by the Indians for food and clothing.



John Charles Frémont planted a U.S. flag on highest peak in Rocky Mts.



The U.S. Cavalry that protected settlers from fierce Indian attacks.



Death of a horse pulling a "Prairie Schooner" was a typical hardship.



Here is a typical gold-mining prospector with his burros and dog.



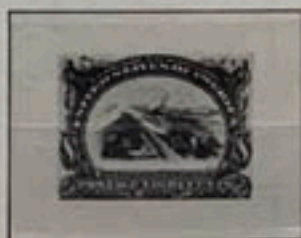
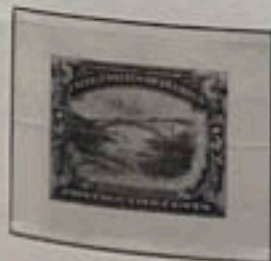
Western cattle were often killed by blizzards and howling winds.



A marvel of the 1890's: bridge over the Mississippi at St. Louis, Mo.

1901

PAN-AMERICAN EXPOSITION



The Pan-American Exposition, held in Buffalo, N. Y. in 1901, was a tribute to the economic and social progress of North, Central, and South America during the 19th Century. Stamps issued to commemorate the event carried pictures featuring this

UNITED STATES

WASHINGTON SHIELD ISSUE

1903

Perforated 12



Vermilion



Red

DIE I



Carmine, Die I



Lake, Die I

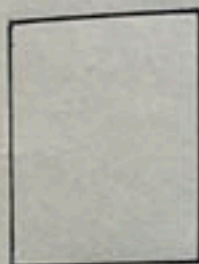


Carmine Rose



Scarlet

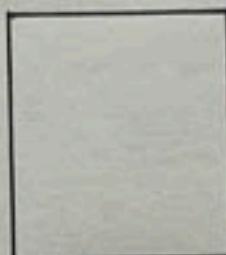
DIE II



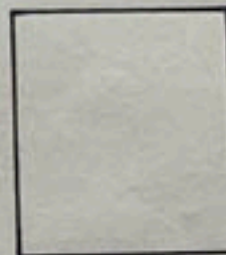
Carmine, Die II



Lake, Die II



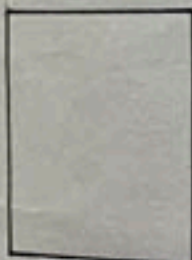
Carmine Rose



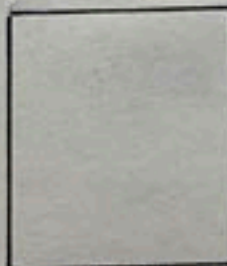
Scarlet

BOOKLET SINGLES

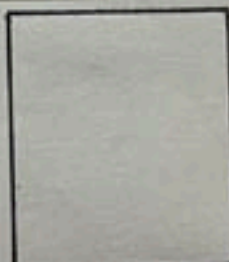
DIE I



Carmine, Die I



Lake, Die I



Carmine Rose

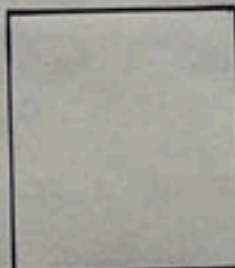


Scarlet

DIE II



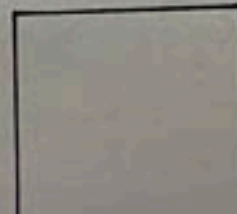
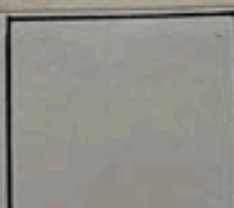
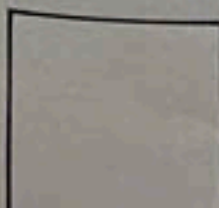
Carmine, Die II



Lake, Die II

1906

IMPERFORATE





ROBERT R. LIVINGSTON



THOMAS JEFFERSON



JAMES MONROE



WILLIAM MCKINLEY



MAP OF LOUISIANA PURCHASE

This set was issued to commemorate the Louisiana Purchase (827,987 sq. mi.), the first major acquisition west of the Mississippi. Pictured on the stamps are the notables who negotiated the vast transaction: Livingston and Monroe bargained with Napoleon; President Jefferson officially approved the deal. President McKinley authorized the St. Louis World's Fair celebrating the centennial of the Purchase.

1906-08

Imperforate



BENJAMIN FRANKLIN

Imperforate



ABRAHAM LINCOLN

1907

JAMESTOWN EXPOSITION



CAPTAIN JOHN SMITH



FOUNDING OF JAMESTOWN



POCAHONTAS

This set marked the 300th anniversary of the founding of the Jamestown Colony in Virginia. On the 1c value is a picture of Capt. John Smith, who led three ships and 105 settlers to this foreign shore. The 2c has as its illustration a painting showing the hardy settlers landing at Jamestown. Chief Powhatan's daughter Pocahontas, who saved Capt. Smith's life, is pictured on the 5c value.

1895

Watermarked USPS



BENJAMIN FRANKLIN



GEORGE WASHINGTON



GEORGE WASHINGTON



GEORGE WASHINGTON



ANDREW JACKSON



ABRAHAM LINCOLN



ULYSSES S. GRANT



JAMES A. GARFIELD



WILLIAM T. SHERMAN



DANIEL WEBSTER



HENRY CLAY



THOMAS JEFFERSON



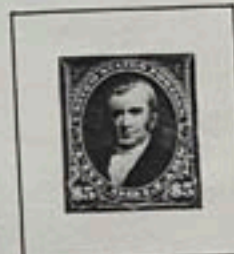
OLIVER HAZARD PERRY
TYPE I



OLIVER HAZARD PERRY
TYPE II

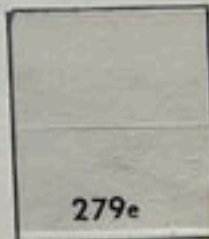
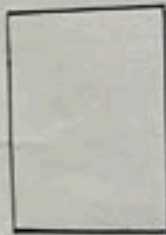


JAMES MADISON



JOHN MARSHALL

These varieties have the same designs as the 1894 issue, but were printed on paper watermarked with the double-line letters USPS, so arranged that one letter or a portion of one appears on each stamp. This was the first time that stamps for postal use were watermarked, and it was done to prevent counterfeiting.



1898

Watermarked USPS



BENJAMIN FRANKLIN



GEORGE WASHINGTON



ABRAHAM LINCOLN



ULYSSES S. GRANT



JAMES A. GARFIELD



DANIEL WEBSTER



DANIEL WEBSTER



HENRY CLAY

UNITED STATES

1902-03

Watermarked USPS

Perforated 12



BENJAMIN FRANKLIN



GEORGE WASHINGTON



ANDREW JACKSON



ULYSSES S. GRANT



ABRAHAM LINCOLN



JAMES A. GARFIELD



MARTHA WASHINGTON



DANIEL WEBSTER



BENJAMIN HARRISON



HENRY CLAY



THOMAS JEFFERSON



DAVID G. FARRAGUT



JAMES MADISON



JOHN MARSHALL

The "Gay 90's" passed into nostalgic history, the new 20th Century dawned, and the Government issued stamps designed to conform to the baroque or "ginger-bread" style of the times. Portraits of American notables in the fields of law, politics, and war were set in decorative frames, biographical data was included. Martha Washington became the first white American woman to appear on a U. S. postage stamp!

1908-09
Watermarked USPS
Perforated 12



Imperforate



These are the first 12 values of issues generally labelled, "The Third Bureau Series of 1908-22." The one and two cent values show the denomination in words instead of numerals. Though Washington is on 11 values, Franklin, never President, is also included; a glowing tribute to his spot in U.S. history.

1908-10
Coil Stamps: Watermarked USPS
Perforated 12 Horizontally



Coil stamps were first designed in 1908 to meet a demand from manufacturers of vending and affixing machines. The first issues, using 1902-03 designs, were experimental and are now quite rare.

1909

Perforated 12: Bluish Gray Paper



BENJAMIN FRANKLIN



GEORGE WASHINGTON



All values up to and including the 15c were printed on 30% rag stock. This resulted in the "Bluish Paper" varieties which are now philatelic gems.

1909

LINCOLN MEMORIAL



IMPERF.



BLUE GRAY PAPER

1910



Booklet Single

To mark the 100th anniversary of the birth of Abraham Lincoln on Feb. 12, 1809 in Kentucky, a special stamp was issued in three forms: perforated, imperforate, and perforated on "Bluish Paper."

1910



Booklet Single

1909

ALASKA-YUKON PACIFIC EXPEDITION



IMPERF.

HUDSON-FULTON CELEBRATION



IMPERF.

In 1867, William Seward, Secretary of State, negotiated with Russia to buy Alaska for \$7,200,000. Called "Seward's Folly," Alaska has proven its worth many hundreds of times over.

Commemorating the 300th anniversary of the arrival of Henry Hudson in New York aboard the "Half-Moon," and the 100th anniversary of Robert Fulton's first voyage in his steamship the "Clermont."

1910-11

Watermarked USPS Perforated 12



BENJAMIN FRANKLIN



GEORGE WASHINGTON



Imperforate



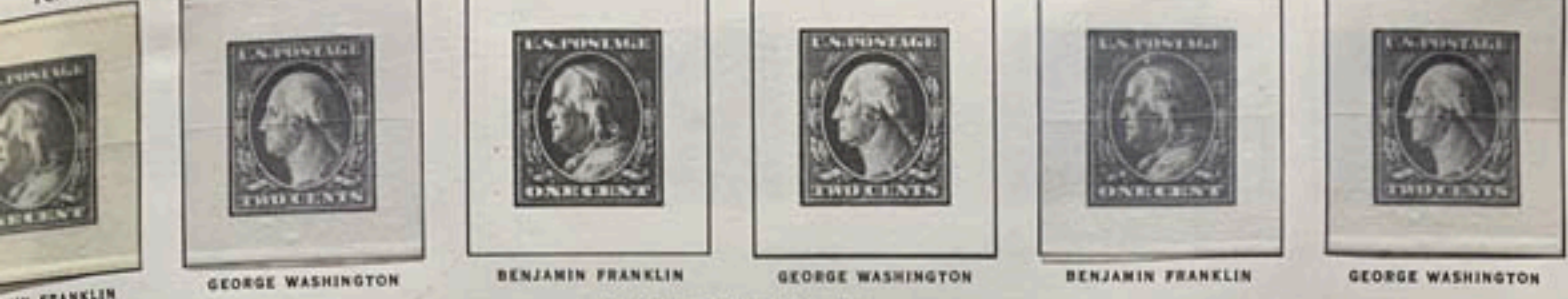
BENJAMIN FRANKLIN



GEORGE WASHINGTON



Perforated 8½ Horizontally



BENJAMIN FRANKLIN GEORGE WASHINGTON BENJAMIN FRANKLIN GEORGE WASHINGTON BENJAMIN FRANKLIN GEORGE WASHINGTON

Perforated 8½ Vertically



BENJAMIN FRANKLIN GEORGE WASHINGTON GEORGE WASHINGTON GEORGE WASHINGTON GEORGE WASHINGTON

From 1910 to 1914, the Bureau of Engraving and Printing experimented with coils to determine the best gauge for perforations. The perf. 12 separated too easily and perf. 8½ was not sufficient. In 1914 perf. 10 was tried and found ideal.

1913
PANAMA-PACIFIC EXPOSITION
Perforated 12



VASCO NUNEZ DE BALBOA



PANAMA CANAL



GOLDEN GATE



DISCOVERY OF SAN FRANCISCO BAY



DISCOVERY OF SAN FRANCISCO BAY

This set of four designs was issued to mark the 400th anniversary of Balboa's discovery of the Pacific Ocean in 1513, also the opening of the Panama Canal in 1914. The first set was perforated with gauge 12 holes; the second (1914-15) had gauge 10 perfs.

1914-15
Perforated 10



VASCO NUNEZ DE BALBOA



PANAMA CANAL



GOLDEN GATE



DISCOVERY OF SAN FRANCISCO BAY

The perforations were changed in 1914 from 12 to 10 to strengthen the sheets.

1912-14

Watermarked USPS

Perforated 12

Imperforate



GEORGE WASHINGTON

COIL STAMPS

Perforated 8 1/2 Horizontally

Perforated 8 1/2 Vertically



Perforated 12



BENJAMIN FRANKLIN



Watermarked USPS



The discontinuance of parcel post stamps made necessary five new denominations of ordinary stamps, 7c, 9c, 12c, 20c and 30c. The 7c value bears the head of Washington, the other four show the head of Franklin. The 1c and 2c varieties of this issue are printed with numerals instead of words.

UNITED STATES

424 d

Booklet Single

1914-15
Watermarked USPS
Perforated 10

425 e

Booklet Single



GEORGE WASHINGTON



BENJAMIN FRANKLIN



The continuing experiments to improve stamp separations resulted in changing the gauge of perforations to 10 for stamps in sheet form, thus quite incidentally creating a new set for collectors. It also became necessary to issue an 11c value for the first time in U.S. postal history.

UNITED STATES

462a

463a

1916-17
FLAT PLATE PRINTING
Unwatermarked; Perforated 10



GEORGE WASHINGTON



BENJAMIN FRANKLIN



JAMES MADISON



JOHN MARSHALL

Imperforate



GEORGE WASHINGTON



TYPE I



TYPE II

An unexpected new demand for high value stamps necessitated adding to this regular issue the 52 and 55 denominations which were made from the old 1902 dies to save cost. When a new contract for paper was effected it was decided, for the sake of economy, to use unwatermarked paper.

UNITED STATES

1916-22

ROTARY PRESS COIL STAMPS

Perforated 10 Horizontally



GEORGE WASHINGTON



TYPE II



TYPE III



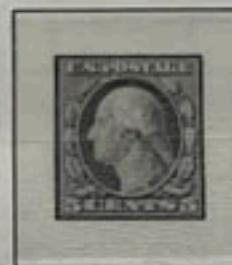
Perforated 10 Vertically



TYPE III



TYPE I



BENJAMIN FRANKLIN

1917

FLAT PLATE PRINTING

5c Error from Sheet of 2c

Perforated 10

Perforated 11



GEORGE WASHINGTON



The famous "Five Cent Error" occurred during the printing of the 1916-17 and 1917-19 issues. The error occurred where 5c stamps appeared within sheets supposed to contain only 2c values.

1918-20
 OFFSET PRINTING
 Unwatermarked: Perforated 11



GEORGE WASHINGTON



TYPE VII



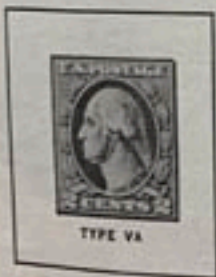
Imperforate



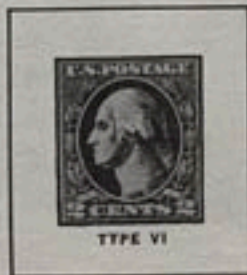
TYPE IV



TYPE V



TYPE VA



TYPE VI



TYPE VII



Perforated 12½



In an attempt to economize due to heavy World War I costs the Bureau tried using offset printing on these varieties, but the results were deemed unsatisfactory for stamps.

1917-19
Unwatermarked
Perforated 11



GEORGE WASHINGTON



BENJAMIN FRANKLIN



1918



OR. RED AND BLACK

BENJAMIN FRANKLIN

1917



WMK. USPS

GEORGE WASHINGTON

1918



BENJAMIN FRANKLIN

Further experiments in perforating proved gauge 11 to be the most satisfactory for the type of paper used at this time. It seemed to make for a happy medium between the too fragile perf. 12 and the too strong perf. 10. The perf. 11 "Two Cent" design of 1908 was made from a left-over supply of imperforate sheets.

1919-21

ROTARY PRESS PRINTING

Unwatermarked: Perforated 11x10



Perforated 10x11

Perforated 10

Perforated 11

Perforated 11



In an attempt to be thrifty, the Post Office issued this assortment of varieties. Some were "coil waste" made from sheets intended to be used to create coil stamps. This issue completed the Washington-Franklin series.

1919

VICTORY



Hailing the allied victory in World War I, this stamp, showing "Freedom" with flags, was issued Mar. 3, 1919.

1920

PILGRIM TERCENTENARY



THE MAYFLOW



LANDING OF PILGRIMS



SIGNING OF COMPACT

This set marked the 300th anniversary of the landing of the Pilgrims at Plymouth Rock. Historians agree that while Plymouth Rock will always be featured in connection with the landing, it is an accepted fact that the first landing was at Provincetown at the tip of Cape Cod and not at Plymouth.

UNITED STATES

1922-25
FLAT PLATE PRINTING
Perforated 11



NATHAN HALE

BENJAMIN FRANKLIN

WARREN G. HARDING

GEORGE WASHINGTON

ABRAHAM LINCOLN



MARTHA WASHINGTON

THEODORE ROOSEVELT

JAMES A. GARFIELD

WILLIAM MCKINLEY

ULYSSES S. GRANT

THOMAS JEFFERSON



JAMES MONROE

RUTHERFORD B. HAYES

GROVER CLEVELAND

AMERICAN INDIAN

STATUE OF LIBERTY



GOLDEN GATE

NIAGARA FALLS

BISON

ARLINGTON AMPHITHEATRE



LINCOLN MEMORIAL

U. S. CAPITOL

"AMERICA"

This Fourth Bureau Series, 1922 to 1934, marks a progressive era in the development of United States stamps. Artistically designed, this issue was printed on both flat plate and rotary presses, has a variety of perforations and some imperforates, several new denominations, and a wide range of subject matter.

Imperforate



BENJAMIN FRANKLIN

Imperforate



WARREN G. HARDING

Imperforate



GEORGE WASHINGTON

Perforated 11x10



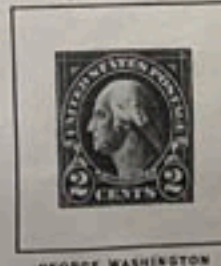
BENJAMIN FRANKLIN

Perforated 11x10



GEORGE WASHINGTON

Perforated 11



GEORGE WASHINGTON

1923-26
 ROTARY PRESS PRINTING
 Perforated 10



1923-29
 COIL STAMPS
 Perforated 10 Vertically



1923
 HARDING MEMORIAL

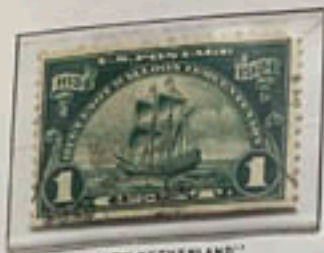


On Sept. 1, 1923, a month after his untimely death, a stamp was issued in U.S. President Harding's memory. Its popularity made it necessary to supplement the flat plate printing (Perf. 11) with a rotary press printing (Perf. 10). Imperforate sheets were issued on demand for those who wished to frame parts of sheets as a memorial of the late chief executive.

UNITED STATES

1924

HUGUENOT-WALLOON



"NEW NETHERLAND"



LANDING AT FORT ORANGE



MONUMENT AT WATPORT, FLA.

Both the Huguenots (Protestants who lived in France) and Walloons (French-speaking Protestants who lived in northeastern France and southwestern Belgium), suffered from religious persecution. The Huguenots fled to Florida, started a settlement. A few years later it was destroyed by Spaniards. The Walloons fled to the "New World" and settled among several colonies located in New Amsterdam, Connecticut and Delaware.

1925

LEXINGTON-CONCORD



WASHINGTON AT CAMBRIDGE



BIRTH OF LIBERTY



THE MINUTE MAN

Although political action had been taken by the American colonies in 1774 to resist unfair taxation by England, the first military action was in 1775 at Lexington, Mass. where the Redcoats fired into a small group of Minutemen. A few hours later at Concord, Mass. the Minutemen fired "the shot heard 'round the world" and the British reeled back with heavy losses. Two months later George Washington assumed command of the Army.

1925

NORSE-AMERICAN



SLOOP "RESTAURATIONEN"



VIKING SHIP

Honoring the first group of Norwegians, who came to the United States in 1825. These hardy pioneers were followed by thousands of their countrymen who settled mainly in the mid-west.

1925-26

Flat Plate Printing: Perforated 11



BENJAMIN HARRISON



WOODROW WILSON

The 13c value, carrying the picture of President Benjamin Harrison, and the 17c value portraying President Woodrow Wilson, met the fees for circulars, parcel post, registered mail.

1926

ERICSSON MEMORIAL



Ericsson invented the ship screw propeller, built the "Monitor," the U.S. Navy's first iron-clad ship.

SESQUICENTENNIAL EXPOSITION



This variety commemorating the 150th anniversary of the signing of the Declaration of Independence was issued at the time of the celebration in Phila.

BATTLE OF WHITE PLAINS



Famous Revolutionary battle in which General George Washington, by brilliant strategy and tactics, escaped seemingly certain defeat.

UNITED STATES

1927
VERMONT SESQUICENTENNIAL



Issued to commemorate the 150th anniversary of the defeat of Gen. Burgoyne at the Battle of Bennington.

1927
BURGOYNE CAMPAIGN



Trapped by a greater American force after losing four minor battles, General John Burgoyne (1722-92) was defeated at Saratoga by General Gates.

1928
VALLEY FORGE



150th anniversary of the winter encampment of Gen. Washington's army. The site is now a national shrine.

1926-29
ROTARY PRESS PRINTING
Perforated 11x10 1/2

631



NATHAN HALE

632



BENJAMIN FRANKLIN

632a



BENJAMIN FRANKLIN

633



WARREN G. HARDING

634



GEORGE WASHINGTON

634A



GEORGE WASHINGTON

634b



634d



GEORGE WASHINGTON



ABRAHAM LINCOLN



MARTHA WASHINGTON



THEODORE ROOSEVELT



JAMES A. GARFIELD

1926
Imperforate



WILLIAM MCKINLEY



ULYSSES S. GRANT



WARREN G. HARDING



THOMAS JEFFERSON



JAMES MONROE

1928

BATTLE OF MONMOUTH



Mary Hays carried pitchers of water to soldiers and replaced her husband at cannon.

1928

HAWAII SESQUICENTENNIAL



These overprints marked the discovery of the Hawaiian Islands by Capt. James Cook in 1778. At first named the Sandwich Islands by Cook, they later became the 50th U. S. State in 1959.



1929

ELECTRIC LIGHT'S GOLDEN JUBILEE

Flat Plate Printing



Rotary Press Printing



Rotary Press Printing



These stamps honored Thomas Alva Edison's development of the electric light in 1879, considered by many to be the world's greatest invention. Edison however, was not the first inventor to visualize an incandescent electric bulb — but he merits the credit for perfecting it.

UNITED STATES

1929

SULLIVAN EXPEDITION



Gen. Sullivan (1740-95) whipped Indians and Loyalists at Newtown, now Elmira, New York.

1928

AERONAUTICS CONFERENCE



Commemorating the 25th anniversary of man's first successful heavier-than-air flight by the Wright brothers at Kitty Hawk, North Carolina.



1929

BATTLE OF FALLEN TIMBERS



By defeating Chief Little Turtle, Gen. Anthony Wayne (1745-96) opened way to the West.

1930

MASSACHUSETTS BAY COLONY



300th Anniversary of Puritans' arrival, founding of first self governing commonwealth.

CAROLINA-CHARLESTON



Noted the 260th anniversary of the Province of Carolina; the City of Charleston's 250th.

1929

OHIO RIVER CANALIZATION



Army engineers built the country's most extensive canal system between Cairo, Illinois, Pittsburgh, Pennsylvania.

1930

BRADDOCK'S FIELD



Gen. Braddock's forces defeated by French and Indians at Ft. Duquesne, now Pittsburgh, Pa.

VON STEUBEN



Inspector-General of the American Revolutionary Army, fought at Monmouth, Yorktown.

1930

ROTARY PRESS PRINTING

Perforated 11x10½



WARREN G. HARDING



WILLIAM HOWARD TAFT

1929

GEORGE ROGERS CLARK



George Rogers Clark (1752-1818) captured Ft. Sackville (site of Vincennes, Ind.) and secured N.W. for America.

1930

ROTARY PRESS PRINTING

Perforated 10 Vertically



WARREN G. HARDING



WILLIAM HOWARD TAFT

1931

YORKTOWN



Blockaded by a fleet at sea and an American and French army ashore, Cornwallis surrendered at Yorktown in 1781, ending the American Revolution.

PULASKI



A Polish Count who aided the American Revolution. Mortally wounded in Georgia.

RED CROSS



The poster, "The Greatest Mother," used as illustration to hail the birth of this Society.

1946

KEARNY EXPEDITION



The Mexican War was ended by the U.S. "Army of the West" when it marched from Ft. Leavenworth, Kansas and captured Santa Fe.

1947

THOMAS A. EDISON



The world's most prolific inventor; patented over 1200 products.

1947

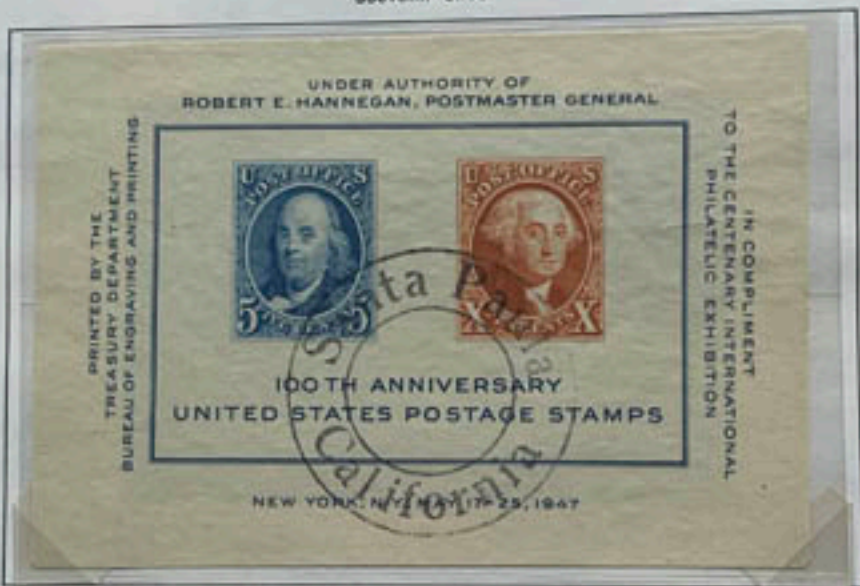
JOSEPH PULITZER



Pulitzer (1847-1911), a great newspaper publisher, controlled St. Louis Post-Dispatch, N.Y. World; founded Columbia's School of Journalism.

1947

CENTENARY INTERNATIONAL PHILATELIC EXHIBITION
Souvenir Sheet



Imperforate



BENJAMIN FRANKLIN

Imperforate



GEORGE WASHINGTON

This Souvenir Sheet reproduced the designs of the first U.S. postage stamps ever issued. Note that though the designs are similar to the 1847 varieties, the colors are different.

POSTAGE STAMP CENTENARY



This issue observed the 100th anniversary of that vital philatelic day, July 3, 1847, when the United States Government issued its first postage stamps.

DOCTORS



"The Doctor," painted by Sir Luke Fildes, honors the dedicated men and women who devote their lives to the prevention and cure of disease.

UTAH



This stamp noted the founding of Deseret by Mormon Brigham Young (1801-77). Utah, with Great Salt Lake, became a Territory in 1850; a State in 1896.

UNITED STATES

1938
(Continued)



CHESTER A. ARTHUR



GROVER CLEVELAND



BENJAMIN HARRISON



WILLIAM MCKINLEY



THEODORE ROOSEVELT



WILLIAM HOWARD TAFT



WOODROW WILSON



WOODROW WILSON



WARREN G. HARDING



CALVIN COOLIDGE

1939

Coil Stamps: Perforated 10 Vertically



GEORGE WASHINGTON



MARTHA WASHINGTON



JOHN ADAMS



THOMAS JEFFERSON



JAMES MADISON



THE WHITE HOUSE



JAMES MONROE



JOHN QUINCY ADAMS



JOHN TYLER

Coil Stamps: Perforated 10 Horizontally



GEORGE WASHINGTON



MARTHA WASHINGTON



JOHN ADAMS



THOMAS JEFFERSON

Designed by a commercial artist, Miss Elaine Rawlinson, classical busts of all deceased U.S. presidents were included in this Fifth Bureau Series. Benjamin Franklin continued to appear; Martha Washington reappeared, and the White House was added.

AIR POST STAMPS

1918



1923



1926-27



1928



1930

Flat Plate Printing: Perforated 11

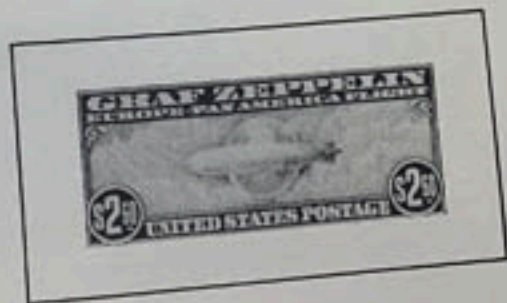
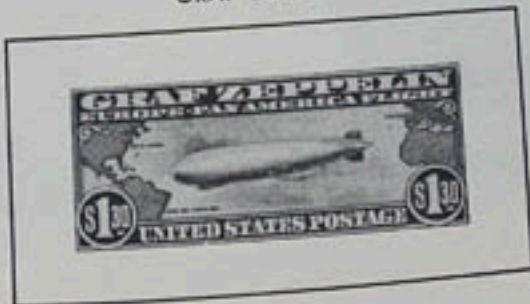
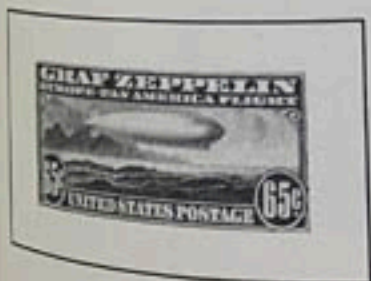


1927
LINDBERGH



1930

GRAF ZEPPELIN

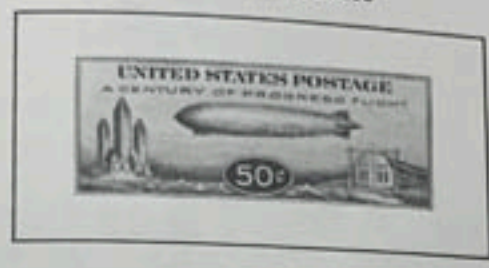


The first air mail service in the U.S. was between New York, Philadelphia and Washington, D.C. To meet the postal fees for this and all subsequent air mail, stamps were issued in appropriate values. Note the three highly valuable Graf Zeppelin stamps, which were used on mail carried by this German dirigible between U.S., Brazil, Germany and Spain.

1931-34
ROTARY PRESS PRINTING
Perforated 10 1/2 x 11



1933
CENTURY OF PROGRESS



1935-37
TRANS-PACIFIC



1938



1939
TRANS-ATLANTIC



Various denominations were issued to meet not only the then-current domestic rates, but also rates for carrying mail by air over the Atlantic and Pacific Oceans. A final Graf Zeppelin stamp pictures Federal Building at Chicago's Exposition, and lighter-than-air machine's home hangar at Friedrichshafen.

STAMPS
1922-25
FLAT PLATE PRINTING
Perforated 11



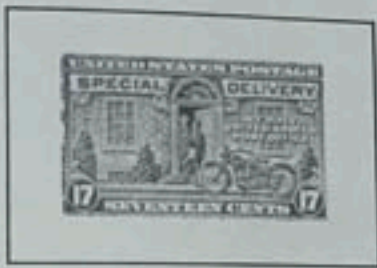
1927-31

ROTARY PRESS PRINTING
Perforated 11 x 10 1/2



1944

1951



1954-57



1969-71









114 II



AT
NER



#7

#2



#2



#2











UNITED STATES POSTAGE
WASHINGTON
1732 1799
TWO CENTS

UNITED STATES POSTAGE
WASHINGTON
1732 1799
TWO CENTS

UNITED STATES POSTAGE
WASHINGTON
1732 1799
TWO CENTS

UNITED STATES POSTAGE
WASHINGTON
1732 1799
TWO CENTS

UNITED STATES POSTAGE
WASHINGTON
1732 1799
TWO CENTS

UNITED STATES POSTAGE
WASHINGTON
1732 1799
TWO CENTS

UNITED STATES POSTAGE
WASHINGTON
1732 1799
TWO CENTS

UNITED STATES POSTAGE
WASHINGTON
1732 1799
TWO CENTS

UNITED STATES POSTAGE
WASHINGTON
1732 1799
TWO CENTS

UNITED STATES POSTAGE
WASHINGTON
1732 1799
TWO CENTS

UNITED STATES POSTAGE
WASHINGTON
1732 1799
TWO CENTS

UNITED STATES POSTAGE
WASHINGTON
1732 1799
TWO CENTS

UNITED STATES POSTAGE
WASHINGTON
1732 1799
TWO CENTS

UNITED STATES POSTAGE
WASHINGTON
1732 1799
TWO CENTS

UNITED STATES POSTAGE
WASHINGTON
1732 1799
TWO CENTS

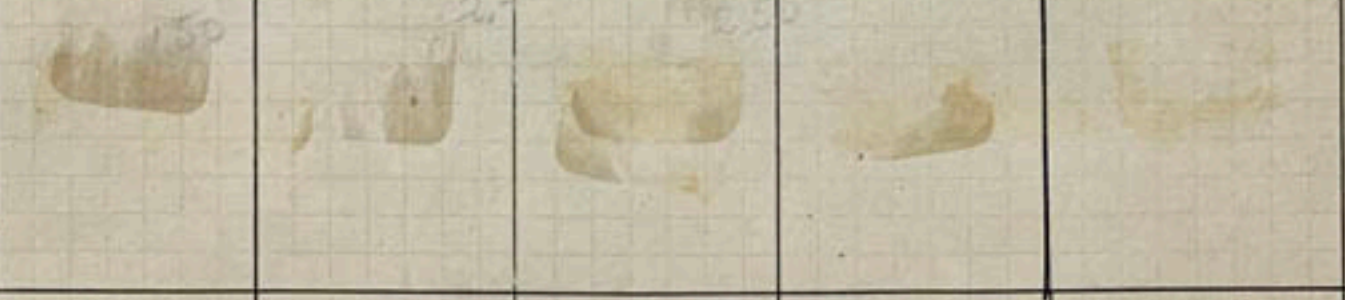
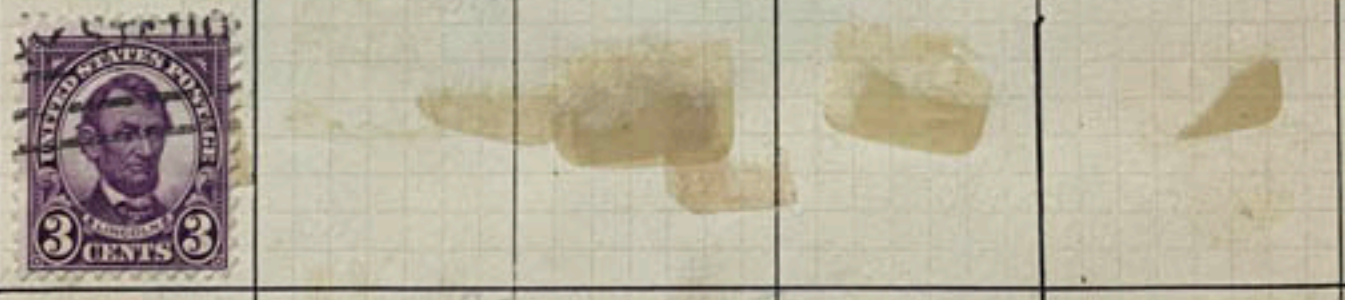
UNITED STATES POSTAGE
WASHINGTON
1732 1799
TWO CENTS

UNITED STATES POSTAGE
WASHINGTON
1732 1799
TWO CENTS

UNITED STATES POSTAGE
WASHINGTON
1732 1799
TWO CENTS

UNITED STATES POSTAGE
WASHINGTON
1732 1799
TWO CENTS

UNITED STATES POSTAGE
WASHINGTON
1732 1799
TWO CENTS











10810



10817

