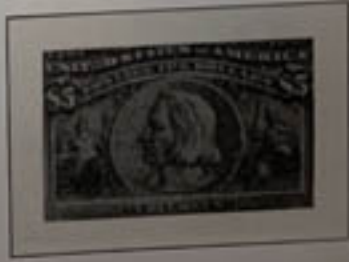


UNITED STATES

Columbian Exposition

1893



UNITED STATES

1894

With triangles in upper corners.

Unwatermarked



UNITED STATES

1895

Watermarked
USPS



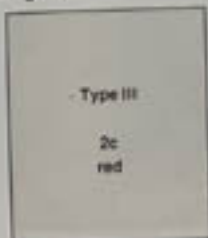
Mit Wasserzeichen
USPS



Colors changed

1898

Farbänderungen



UNITED STATES

Trans-Mississippi Exposition

1898



Pan-American Exposition

1901



UNITED STATES

1902/03

Wmkd. **USPS** -Perf. 12



1906/08

Imperforated



1903

Perf. 12



1906

Imperf.



UNITED STATES

1904

Louisiana Purchase Exposition



1907

Jamestown Exposition



1909

Perf. 12

Imperf.



Perf. 12

Bluish Paper

Imperf.



UNITED STATES

Panama-Pacific Exposition

1913

Perf. 12



1914/15

Perf. 10



UNITED STATES

Single Line Wmk. USPS Perf. 12

1910/11



1911 Imperf.



Registration Stamp



1912 Imperf.



Single Line Wmk.

1912/14

Perf. 12



UNITED STATES

Coil Stamps

USPS

Single Line Wmk.



1910/11

Perf. 12



USPS

Single Line Wmk.



1910/13

Perf. 8 1/2



USPS

Single Line Wmk.



1912

Perf. 8 1/2



UNITED STATES

Double Line USPS Watermark

1912

1912

1915

1917

Perf. 12

Perf. 12

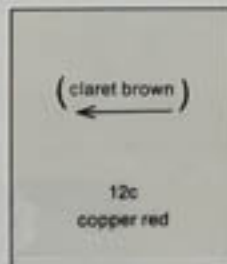
Perf. 10

Perf. 11



Single Line USPS Watermark

1914/15 — Perf. 10



Imperf.

Perf. 11



UNITED STATES

Coil Stamps

USPS

Single Line Wmk.



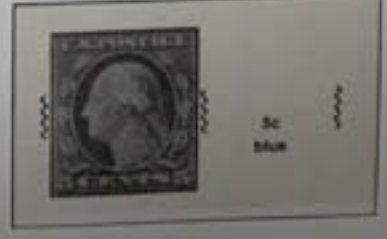
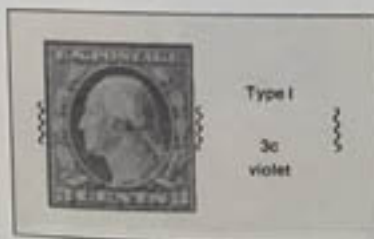
1914
Perf. 10
Flat Plate Printing
18.5—19 x 22 mm



18.5—19 x 22.5 mm



1914/16
Perf. 10
Rotary Press Printing
19.5—20 x 22 mm



UNITED STATES

Imperforated

1847

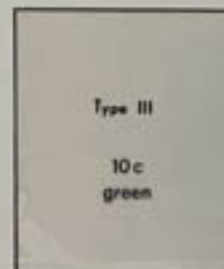
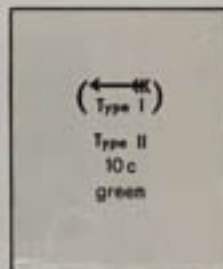
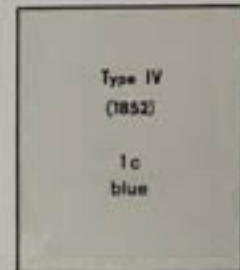
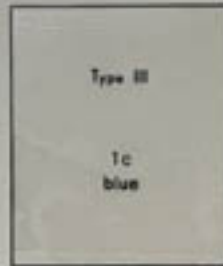
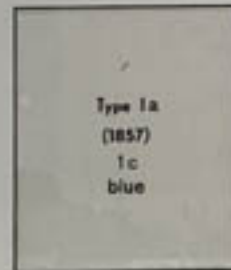
Geschnitten



Imperforated

1851/57

Geschnitten

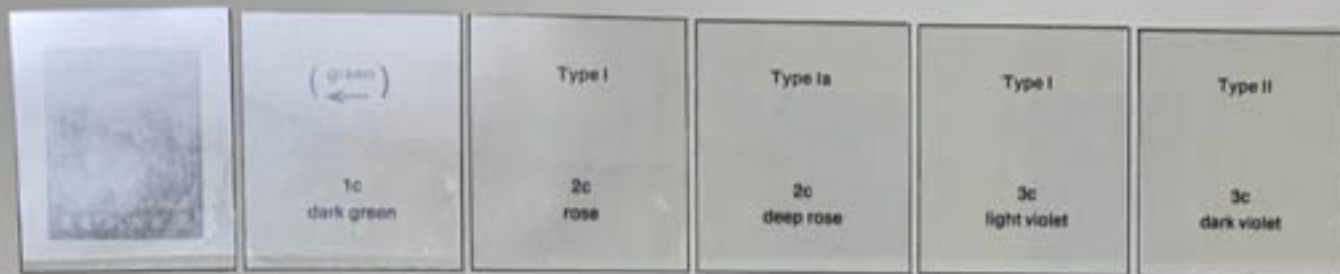


UNITED STATES

1917/19

Unwatermarked — Flat Plate Printing — Perf. 11

16.5—19 x 22 mm



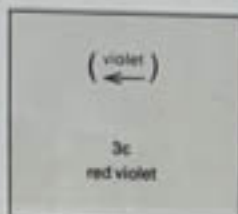
Error



UNITED STATES

Victory Issue

1919



Pilgrim Tercentenary Issue

1920



Harding Memorial Issue

1923

Perf. 11



Imperf.



Rotary Perf. 10



18x22.5 mm

Huguenot-Walloon Tercentenary Issue

1924



NH

UNITED STATES

1925



NH

1925



1926



1926



1927



1927



1928



1928



1928



1928



UNITED STATES

Unwmkd. — Flat Plate Printing — Perf. 11

1922/26



Sc. 622/50 626



Sc. 623/50 627



UNITED STATES

Unwmkd. — Flat Plate Printing — Imperf.

1923/25



18.5—19x22 mm

Unwmkd. — Rotary Press Printing — Var. Perfs.

1923

Perf. 11:10



Sc. 578/SG 585

1c
green



2c
carmine

19.5—20x22 mm

1926

Imperf.



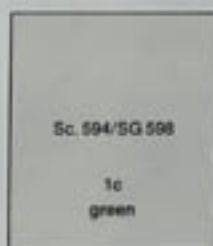
Sc. 631/SG 632

1 1/2c
yellow-brown

18.5—19x22.5 mm

1924

Perf. 11



Sc. 594/SG 598

1c
green

19.5—20x22 mm



2c
carmine

18.5—19x22.5 mm

1923/26

Perf. 10



UNITED STATES

Unwmkd. — Rotary Press Printing — Perf. 11:10½

1926/34



UNITED STATES

1929

Regular Issue of 1926—27



Rotary Press Printing

Overprinted Kans.

Perf. 11:10½



Overprinted Nebr.



UNITED STATES

Coil Stamps

Rotary Press Printing

Perf. 10

1923/32



1924



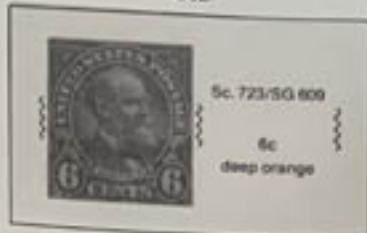
1930



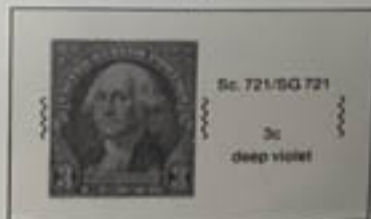
1930



1932



1932



1929



UNITED STATES

1929



Perf. 11



Perf. 11:10½



Rotary Press



1930



1931



UNITED STATES

1932



UNITED STATES

1933

Flat Plate Printing — Perf. 11 — Gummed



Rotary Press — Perf. 10½ : 11 — Gummed



Sc. 727/SG 726

Sc. 732/SG 731

Single Stamps from 1933/34 Souvenir Sheets

Imperforated

1933

Ungummed



Sc. 730a/SG 729a

Ungummed



Sc. 731a/SG 730a

Ungummed



Sc. 735a/SG 734a

Gummed



Sc. 750a/SG 749a

Gummed



Sc. 761a/SG MS 759a

UNITED STATES

„Century of Progress“ International Exhibition

Souvenir Sheet Commemorating the
American Philatelic Society Convention in Chicago, Illinois

Imperf.

1933

Ungummed



Sc. 730/50 M5 729

UNITED STATES

„Century of Progress“ International Exhibition

Souvenir Sheet Commemorating the
American Philatelic Society Convention in Chicago, Illinois

Imperf.

1933

Ungummed



Sc. 731/50 MS 730

UNITED STATES

Byrd Antarctic Expedition of 1933

Souvenir Sheet for the National Stamp Exhibition
held in New York, N. Y., in Febr. 1934

Imperf. 1934 Ungummed



Sc 735-50 MS 734

UNITED STATES

Flat Plate Printing

1934

Perf. 11 (with gum)



Rotary Perf. 11 : 10½



Flat Plate Perf. 11



National Parks



UNITED STATES

Imperf.

1934

Gummed



UNITED STATES

Farley Special Printings

1935

Issued without gum.

Perf. 11

Imperf.



Imperf.



Imperf.



Perf. 10 1/2 - 11



Imperf.



Sc. 771-50-770

UNITED STATES

1938/54



UNITED STATES

1958/59



UNITED STATES

Postage Due Stamps

Perf. 12 - 1879 - Brown



Perf. 12 - 1884/89 - Red Brown



Perf. 12 - 1891/93 - Claret



UNITED STATES

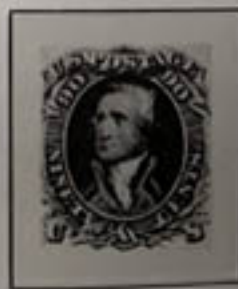
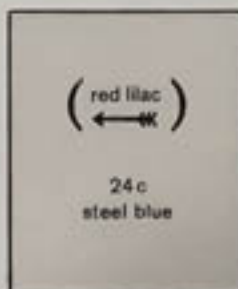
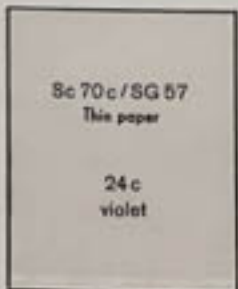
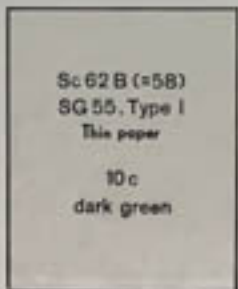
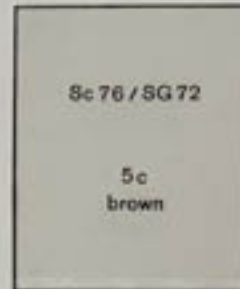
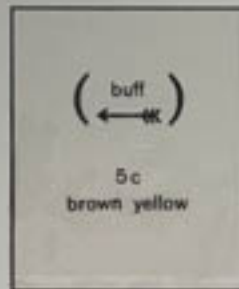
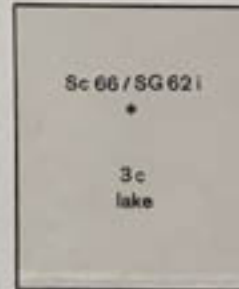
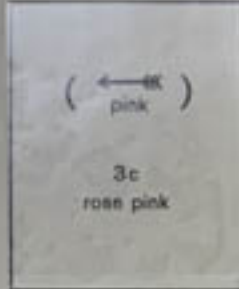
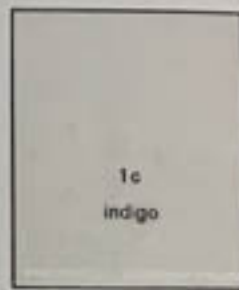
Without Grill

Perforated 12

1861/66

Gezähnt 12

Ohne Waffel-Einpressung



UNITED STATES

Postage Due Stamps

Single Line Wmk. USPS - 1910/12 - Perf. 12, Deep Claret



(1912)
Sc. J 50
SG D 409

50 c
deep claret

Single Line Wmk. USPS

1914/15

Perf. 10, Carmine Lake



Sc. J 53 b
SG D 467 b

2 c
vermilion



Sc. J 58
SG D 472

50 c
carmine lake

Unwatermarked

1916

1925

1917/23

Perf. 10-Rose

Dull Red

Perf. 11-Carmine Rose



Perf. 11 -

1917/23

- Carmine Rose



Sc. J 67
SG D 536

50 c
carmine rose

UNITED STATES

Postage Due Stamps

Unwatermarked - 1930/31 - Perf. 11, Carmine

19 x 22 mm



22 x 19 mm

22 x 19 mm

Unwatermarked - 1931/56 - Perf. 11:10 1/2, Dull Carmine

19 x 22.5 mm



Perf. 12 1/2: 11



22.5 x 19 mm

UNITED STATES

Parcel Post Stamps

1912/13



UNITED STATES

Parcel Post Postage Due Stamps

1912



green



Special Handling Stamps

for use on parcel post packages

1925



deep green

1928



yellow green



1929



yellow green

UNITED STATES

Special Delivery Stamps

Unwatermarked - Perf. 12

1885



1888



1893



1894



Line under "TEN CENTS"

Double Line **USPS** Wmk. - Perf. 12

1895



1908



1902



Single Line **USPS** Wmk.

1911

Perf. 12



1914

Perf. 10



Unwatermarked

1916

Perf. 10



1917

Perf. 11



Special Delivery Stamps

Unwatermarked - Perf. 11

1922



36 x 21 1/2 mm

1925



36 1/2 x 21 1/2 mm

1925



36 1/2 x 21 1/2 mm

1927 Perf. 11 : 10 1/2



36 1/2 x 21 1/2 mm

Unwatermarked - Perf. 11 : 10 1/2

1931



1944



1944



1951



36 1/2 x 22 mm

1954



1957



UNITED STATES

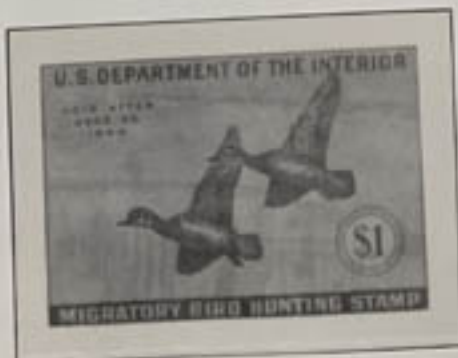
Department of Agriculture — Hunting Permit Stamps

1934/38



Department of the Interior — Hunting Permit Stamps

1939/44



UNITED STATES

Department of the Interior — Hunting Permit Stamps

1945/58



UNITED STATES

Department of the Interior — Hunting Permit Stamps

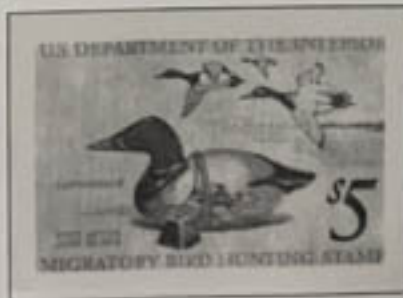
1959/68



UNITED STATES

Department of the Interior — Hunting Permit Stamps

1969/75



UNITED STATES

Re-Issues – Special Printings – Neudrucke

1875

Hard white Paper
without grill

Perforated 12



Weißes hartes Papier
ohne Waffeleinprägung

Gezähnt 12



1880

Soft porous paper – Weiches poröses Papier



UNITED STATES

Department of the Interior – Hunting Permit Stamps

1976/81



VOID AFTER JUNE 30, 1981

VOID AFTER JUNE 30, 1982

UNITED STATES

Confederate States — Konföderierte Staaten

General Issues 1861 Allgemeine Ausgaben



London Print
Londoner Druck



1862



Local Print
Lokaldruck



1863



Never put in use
Nicht verausgabt



1863



1863



Die A-Type I
Open Corners — Offene Ecken

Die B-Type II
Filled Corners — Gefüllte Ecken



UNITED STATES

1870/71

Without Grill – Ohne Waffeleinprägung

Printed by the



National Bank Note Co.



1873

Printed by the Continental Bank Note Co.



3c
green

6c
dull pink

7c
orange-verm.

10c
brown

12c
black-violet

15c
yellow orange

30c
grey-black

50c
rose-carmine

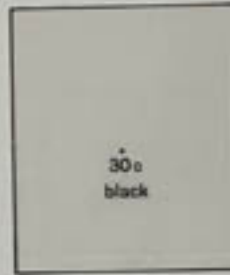
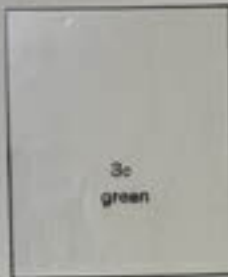
UNITED STATES

1875

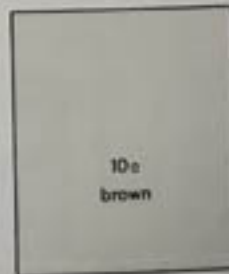
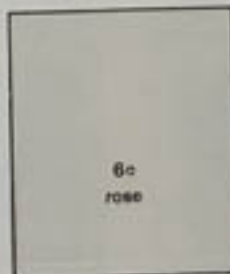


1879

Printed by the American Bank Note Co.



Designs of 1873 Re-engraved - 1881/82 - Neugravierte Platten

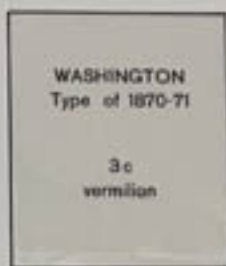


1882/83

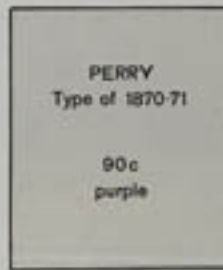


UNITED STATES

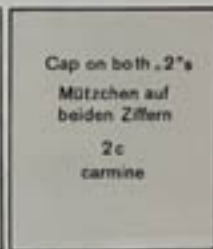
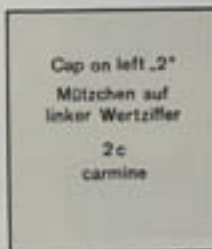
1867



1868



1890/93





01368204



1912 1c
Green
Mint OGrn
410/8.5H SLW
G50/
Ord No: 20029828

09

65

01368201



1910 1c
Green
Mint OGrn
385/12H SLW
G50/
Ord No: 20029828

01368202



1910 2c
Carmine
Mint OGrn
385/12H SLW
G50/
Ord No: 20029828

01368203



1912 2c
Carmine
Mint OGrn
411/8.5H
G50/
Ord No: 20029828

01368205



1910 2c
Carmine
Mint OGrn
391/8.5H SLW
G50/
Ord No: 20029828

09/18

575