











156-

1187-88

205 Price 15-



Ross Wiessmann, PO Box 590, Augusta, NJ 07822-0590



081 China Postmark 世界万国 1997年11月11日发行 每枚2分 共2枚 1.187-88



珍稀濒危木兰科植物



中华全国
集邮联合会
第二次
代表大会

一九八六年
北京



孙中山诞生一百二十周年



1866—1986



辽宁省邮电管理局集邮品
经精部设计，承制



辽宁省邮电管理局集邮品
经精部设计，承制

聊城地区集邮协会
成立三周年紀念

聊城地区邮票公司发行



美國一九八六年國際郵展紀念 AMERIPEX '86

民國七十五年五月二十二日至六月一日在芝加哥舉行 Chicago, May 22 to June 1, 1986



PAINTINGS BY PU HSIN-YÜ (1896-1963)

中華民國交通部郵政總局
Directorate General of Posts
Taipei, Taiwan, Republic of China

CHINA (PEOPLE'S REPUBLIC)

CHINA (PEOPLE'S REPUBLIC)



CHINA (PEOPLE'S REPUBLIC)



CHINA (PEOPLE'S REPUBLIC)



531



534

CHINA (PEOPLE'S REPUBLIC)



CHINA (PEOPLE'S REPUBLIC)
CHINA (PEOPLE'S REPUBLIC)



686



696



698

CHINA (PEOPLE'S REPUBLIC)



CHINA (PEOPLE'S REPUBLIC)

857



858

CHINA (PEOPLE'S REPUBLIC)

THE GREAT WALL



53



54



55



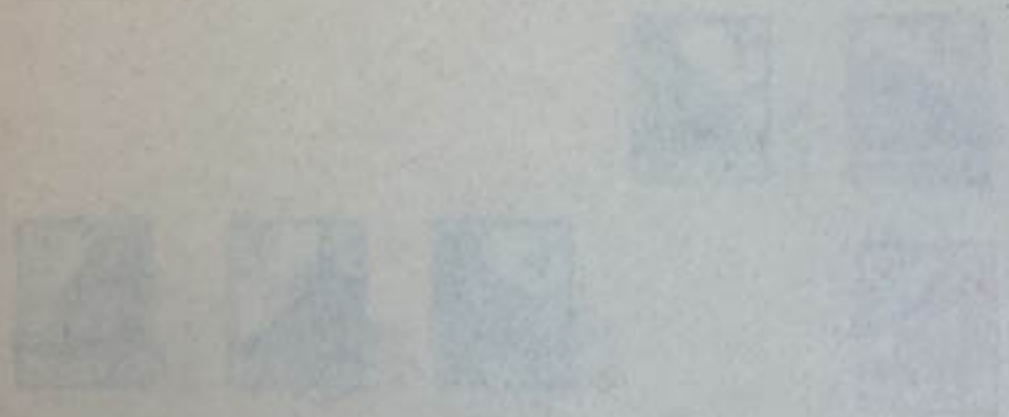
512

CHINA (PEOPLE'S REPUBLIC)

NORTHEAST CHINA



126



CHINA (PEOPLE'S REPUBLIC)



871

875

880

881

CHINA (PEOPLE'S REPUBLIC)

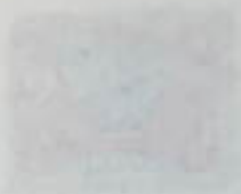


CI



CHINA (PEOPLE'S REPUBLIC)

NORTHEAST CHINA



1949



1949



1949



1949

CHINA (PEOPLE'S REPUBLIC)

NORTHEAST CHINA



1L197



1L198



1L199



1L200



1L136
PROBABLY
A REPRINT



1L201

PROBABLY A
REPRINT

CHINA (PEOPLE'S REPUBLIC)
NORTHEAST CHINA



16163
REPRINT



16158

5-5



16171



16172

CHINA (PEOPLE'S REPUBLIC)

NORTH CHINA



3229

CHINA (PEOPLE'S REPUBLIC)

NORTH CHINA

~~NORTH CHINA~~

~~NORTH CHINA~~

~~NORTH CHINA~~



3256



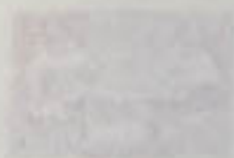
4256



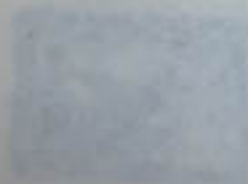
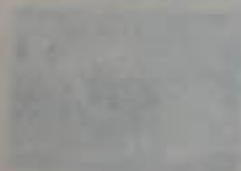
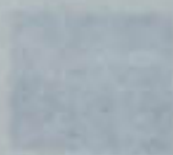
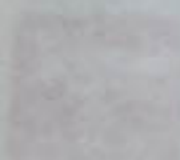
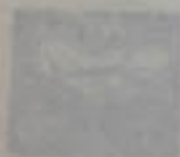
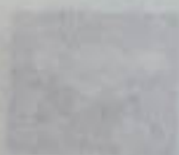
3253

CHINA (PEOPLE'S REPUBLIC)

NORTHWEST CHINA



4266



CHINA (PEOPLE'S REPUBLIC)
EAST CHINA



SL12



SL13

SL23



SL24



SL26



SL27



SL28



SL29



SL33



SL35



SL34



SL36

CHINA (PEOPLE'S REPUBLIC)

EAST CHINA



5L
60



5L61



5L62



5L63



5L64



5L73



5L77



5L77



5L
84



5L85



5L86



5L87



5L88



5L89



5L90



0417

5L85



5L
95

CHINA PEOPLE

CENTRAL CHINA



6637



6550



6640a



6555



66

CHINA (PEOPLE'S REPUBLIC)

CENTRAL CHINA



6L51

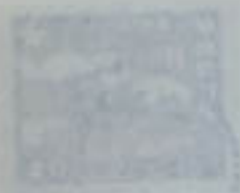


CHINA (PEOPLE'S REPUBLIC)

CENTRAL CHINA



L108



L109

CHINA (PEOPLE'S REPUBLIC)

SOUTH CHINA



761



762



763



764



765

CHINA (PEOPLE'S REPUBLIC)

SOUTHWEST CHINA



CHINA



CHINA



020 票郵國民華中
REPUBLIC OF CHINA



040 票郵國民華中
REPUBLIC OF CHINA



050 票郵國民華中
REPUBLIC OF CHINA

復興民族文化



2 票郵國民華中 100分
REPUBLIC OF CHINA

2 票郵國民華中 100分
REPUBLIC OF CHINA



2 票郵國民華中 100分
REPUBLIC OF CHINA

2 票郵國民華中 100分
REPUBLIC OF CHINA



2 票郵國民華中 100分
REPUBLIC OF CHINA

2 票郵國民華中 100分
REPUBLIC OF CHINA

2 票郵國民華中 100分
REPUBLIC OF CHINA

實踐三民主義



2 票郵國民華中 100分
REPUBLIC OF CHINA

2 票郵國民華中 100分
REPUBLIC OF CHINA

2 票郵國民華中 100分
REPUBLIC OF CHINA

5 票郵國民華中
REPUBLIC OF CHINA

票郵國民華中 5
REPUBLIC OF CHINA



5 票郵國民華中
REPUBLIC OF CHINA

票郵國民華中 5
REPUBLIC OF CHINA



CHINA

復興民族文化



2 票郵國民華中
REPUBLIC OF CHINA



2 票郵國民華中
REPUBLIC OF CHINA



2 票郵國民華中
REPUBLIC OF CHINA



2 票郵國民華中
REPUBLIC OF CHINA



2 票郵國民華中
REPUBLIC OF CHINA



2 票郵國民華中
REPUBLIC OF CHINA



2 票郵國民華中
REPUBLIC OF CHINA



2 票郵國民華中
REPUBLIC OF CHINA



2 票郵國民華中
REPUBLIC OF CHINA

實踐三民主義



2 票郵國民華中
REPUBLIC OF CHINA



2 票郵國民華中
REPUBLIC OF CHINA



3 票郵國民華中
REPUBLIC OF CHINA



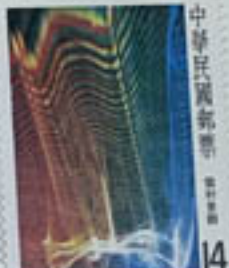
8 票郵國民華中
REPUBLIC OF CHINA



中華民國郵票
REPUBLIC OF CHINA



中華民國郵票
REPUBLIC OF CHINA



中華民國郵票
REPUBLIC OF CHINA



18 票郵國民華中
REPUBLIC OF CHINA



中華民國郵票
REPUBLIC OF CHINA



2 票郵國民華中
REPUBLIC OF CHINA



3 票郵國民華中
REPUBLIC OF CHINA



4 票郵國民華中
REPUBLIC OF CHINA



18 票郵國民華中
REPUBLIC OF CHINA

CHINA
CHINA



CHINA

CHINA



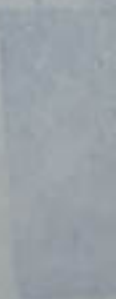
CHINA



CHÉFOO
(LOCAL)



CHINA



CHINA



1301



1302



1317



1321



1322



1323



1324



1343



CHINA

1352



1353



1354

1396

CHINA





100



100

CHINA

1504



513

1516

1522

1541



CHINA

(F)



(F)



CHINA



1206

2471

11



11210



1637

102

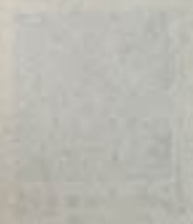
CHINA



1702



1704



CAT IN 7A



1765



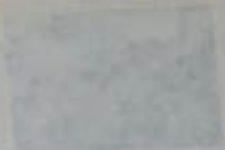
1765

1783



1771

CHINA



1845



1846

CHINA



CHINA



1942

CHINA



CHINA



CHINA



2062



2062



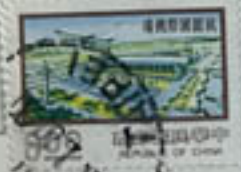
2062



2062



2072



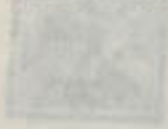
2072



2097

CHINA
CHINA

2111



2112



2113

CHINA



B11



B12



B13

CHINA



c6



c48



c49



c50

CHINA



c52



c53



c55



c57



c58



c56



c51



c54



c66



c50

CHINA



26.

200 200

CHINA



311



312



310



313



314



315



316



317



318



319



320



382



386



327



321



322



387



323



324



325



396



397



398



399



400

CHINA



J101



J102



J103



J104



J105



J106



J107



J108



J109



J110



J117



J119

CHINA

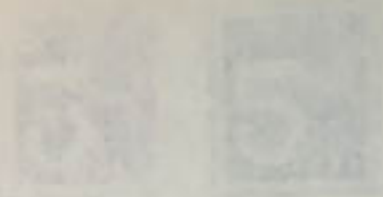


3-0

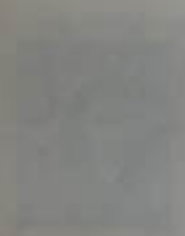
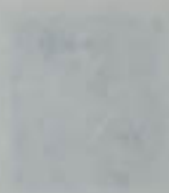


9

CHINA



7-3



CHINA [TAIWAN (FORMOSA)]



CHINA
CHINA

TAIWAN (FORMOSA)



7



31



16



4



77

CHINA NORTH CHINA

CHINA

TAIWAN CFORMOSA



51



CHINA (MENG CHIANG)

2N 11(11)



CHINA (MENG OFFICER)



4304

4205

CHINA (MENG CHIANG)



22108



22112



22113



22127

CHINA (NORTH CHINA)

NEINA

CHINA (NORTH CHINA)

HONAN
→



3435
TYPE II



CHINA (NORTH CHINA)

CHINA (NORTH CHINA)

HOPEI

CHINA (NORTH CHINA)

HOPEI

7



2
5

CHINA (NORTH CHINA)

CHINA (NORTH CHINA)

HOPEI

7



4251



CHINA (NORTH CHINA)

CHINA (NORTH CHINA)

- FOR USE IN: HONAN, HOPEI, SHANSI, SHANTUNG,
AND SUPEH (NORTHERN KIANGSU)



5.25

CHINA (NORTH CHINA)
CHINA (NORTH CHINA)

- FOR USE IN: HONAN, HOPEI, SHANSI, SHANTUNG AND
SUIH (NORTHERN KIANGSU)



023



024



025

CHINA (SHANGHAI AND NANKING)



21A



21



21



21



21

CHINA (SHANGHAI AND NANKING)



624-

CHINA (SHANGHAI AND NANKING)



62-01



92102



92103



62-02



62-03

CHINA (SHANGHAI AND NANKING)

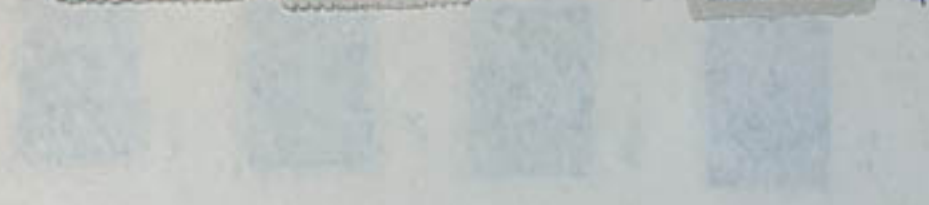
9NE3
9NE7



CHINA (NORTHEASTERN PROVINCES)



CHINA NORTH-EASTERN PROVINCES



CHINA (NORTHEASTERN PROVINCES)



32



34



35



36



37



38

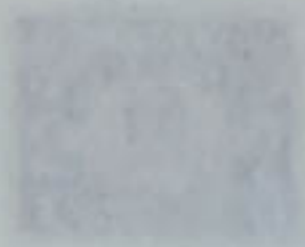


39

CHINA (SZECHWAN PROVINCE)



112



CHINA (YUNNAN PROVINCE)



25

CHINA

MANCHURIA



2



11



21



22

CHINA (SINKIANG)



122



128



125

CHINA (PEOPLE'S REPUBLIC)

RE-PRINT



5 RE-PRINT

2 RE-PRINT

4 RE-PRINT

4 RE-PRINT

RE-PRINT

RE-PRINT

26

27

29

20

24

25

RE-PRINT

30

49

5

CHINA (PEOPLE'S REPUBLIC)



51



52



55



77



78



78a



79



81



82



83



85

PABLY
WANTS

CHINA (PEOPLE'S REPUBLIC) * NOS. 101-104 REULLETED WERE SOLD FOR PHILATELIC PURPOSE ONLY.

(10-150)



124 REPRINT

PROBABLY A REPRINT

(reprint) -> 126

REPRINT

144A

144B

144C

150

148C

148D

135

CHINA (PEOPLE'S REPUBLIC) (1961-1970)

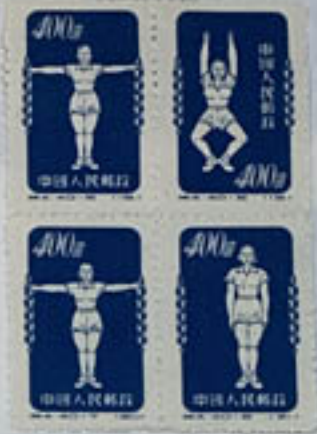
142 abcd



147 abcd



141 abcd



CHINA (PEOPLE'S REPUBLIC)



161

171

187

177

187

178

160

167

168

153

169

166

170

155

155

155

150

CHINA PEOPLE'S REPUBLIC | 209



212



1973
1973



204



206



207



211



218



223



219



232



233



238 ↑



235



249



250

CHINA (PEOPLE'S REPUBLIC)

252

253

254

251



255



259



279



277

280

CHINA (PEOPLE'S REPUBLIC)
CHINA (PEOPLE'S REPUBLIC)



CHINA (PEOPLE'S REPUBLIC)
CHINA (PEOPLE'S REPUBLIC)



327



18



33



34