

NEW BRUNSWICK

Unwatermarked
1851



Imperforate
6 P
OLIVE YELLOW

15
BRIGHT
RED VIOLET

15
DULL VIOLET

1860



1860-63



6-11



NEWFOUNDLAND

Unwatermarked
1861-62



Types of 1862-60
1 P
VIOLET
BROWN



1865-94



part



1868-94



1876-79



NEWFOUNDLAND

Unwatermarked
1880-96



1890



NEWFOUNDLAND

Unwatermarked
1897 ^{97b}



97c
98-99



1897



1897-1901



90a



NEWFOUNDLAND

Unwatermarked
1908



1910



1911

<p>Same Types Engraved 6 C BROWN VIOLET</p>	<p>12 C RED BROWN</p>	<p>15 C SLATE GREEN</p>
---	---------------------------	---------------------------------

<p>8 C BISTRE BROWN</p>	<p>9 C OLIVE GREEN</p>	<p>10 C VIOLET BLACK</p>
-----------------------------	----------------------------	------------------------------

NEWFOUNDLAND

Unwatermarked
1911



1919



	Like 1 C 6 C GRAY 120	Like 2 C 8 C MAGENTA 121	Like 1 C 10 C DARK GREEN 122	Like 2 C 12 C ORANGE 123
---	--------------------------------	-----------------------------------	---------------------------------------	-----------------------------------

Like 1 C 15 C DARK BLUE 124	24 C BISTRE 125	36 C OLIVE GREEN 126
--------------------------------------	-----------------------	----------------------------

NEWFOUNDLAND

Unwatermarked
1920



1923-24



NEWFOUNDLAND

Unwatermarked
1928



Like P C
14 C
RED BROWN



Like 12 C
28 C
GRAY GREEN



1929

Stamp of 1928-29
recharged in Red
**THREE
CENTS**
Or 4 C GRAY BLACK

NEWFOUNDLAND

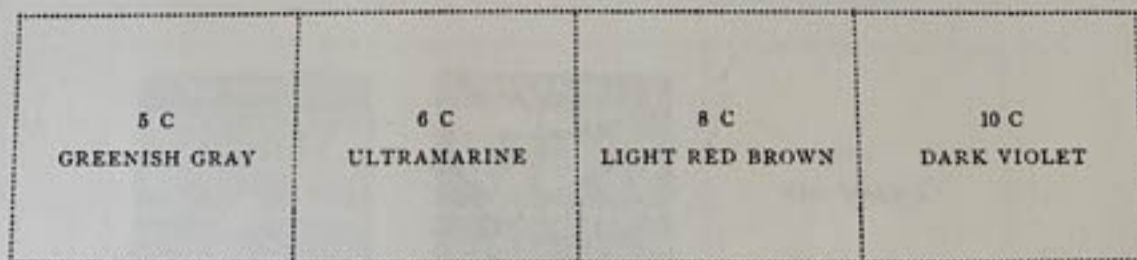
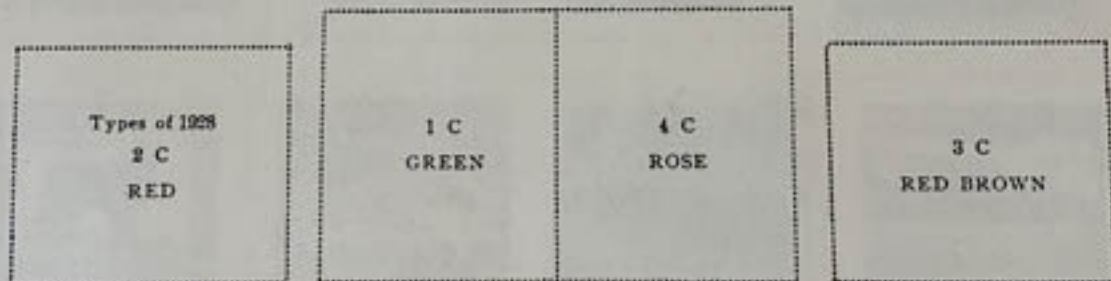
Unwatermarked

1929-31



Watermarked Coat of Arms in Sheet

1931



NEWFOUNDLAND

Watermarked Coat of Arms in Sheet

1932-37



1933

Air Post Stamp of 1931
Overprinted

L. & S. Post.

and Bars

15 C BROWN

NEWFOUNDLAND

Watermarked Coat of Arms In Sheet
1933



Watermarked Multiple Crown and Script C. A.
1935



NEWFOUNDLAND

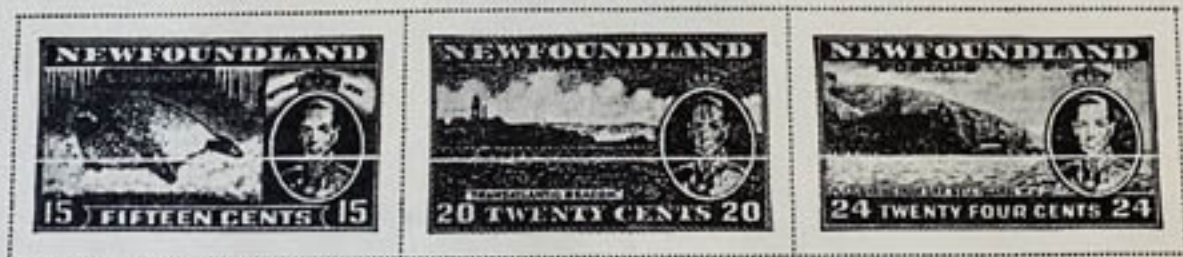
Watermarked Multiple Crown and Script C, A.

1937



Watermarked Coat of Arms in Sheet

1937



NEWFOUNDLAND

Watermarked Coat of Arms in Sheet
1938



Unwatermarked
1939



1939



1941



1943-46



NEWFOUNDLAND

Watermarked Coat of Arms in Sheet
1941-44



1947



1947



NEWFOUNDLAND

AIR POST STAMPS

Watermarked Coat of Arms in Sheet

1933



Unwatermarked

1943



NEWFOUNDLAND

POSTAGE DUE STAMPS

Unwatermarked

1939

 <p>1 CENT NEWFOUNDLAND</p>	2 C VERMILION	3 C ULTRAMARINE	4 C YELLOW ORANGE
--	------------------	--------------------	----------------------

5 C PALE BROWN	10 C DARK VIOLET
-------------------	---------------------

Watermarked Coat of Arms in Sheet

1949

10 C DARK VIOLET



NOVA SCOTIA

Unwatermarked
1851-53



Imperfesse
3 P
DARK BLUE

6 P
YELLOW GREEN

6 P
DARK GREEN

1 S
REDDISH VIOLET

1 S
DULL VIOLET

1860-63



NG

Proof



PRINCE EDWARD ISLAND

Unwatermarked

1861



1862-65



42

8

16

12 1/2

9 1/2

1868-70



4

9

1872



1

2

3

4



6

12

138